



# Pocklington Green Corridors

## Beewalk Survey Pack

### Objective

The Pocklington Green Corridors (PGC) project aims to improve the biodiversity both in and around Pocklington.

Before we can do that, we need to know what is here already.  
That's where you come in!

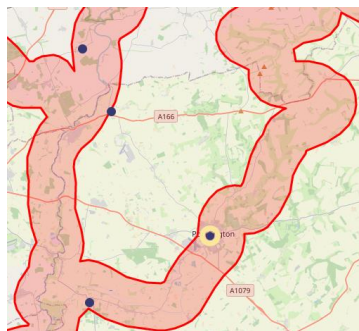
### BeeWalk Survey Scheme

The BeeWalk Survey Scheme has been setup by the Bumblebee Conservation Trust (BBCT).



BeeWalks under the PGC project are also included on the Buglife website as part of their B-lines project aimed at created wildflower networks across the UK. One of which runs right through Pocklington!

<https://www.buglife.org.uk/our-work/b-lines/b-lines-north-england/>

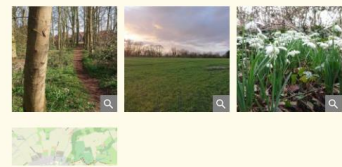


Date: 1/1/2021

#### Pocklington Green Corridors

● Habitat restoration, School activities, Urban Meadow, Bee hotels, Wildflower margins, pollen and nectar mixes

📍 Pocklington



### When you conduct your survey, you will need:

A pad and pen/notepad app on smartphone

A way of telling the time

*(Ideally you can use a weather app to record the temperature too).*



**Bumblebee**  
Conservation  
Trust

## BeeWalk Survey Scheme

# How to record species on surveys

Simply walk along the transects and record the bees you see.



## The main information required:

Location

Date

Start and end times

A list of species under transect sections (see map images).



## Additional optional information:

Sunshine: e.g. sunny, sunny/cloudy or cloudy

Temperature

Wind speed (see options 1-6 below)

- 0. Smoke rises vertically
- 1. Slight smoke drift
- 2. Wind felt on face, leaves rustle
- 3. Leaves and twigs in slight motion
- 4. Dust raised and small branches move
- 5. Small trees in leaf begin to sway
- 6. Large branches move and trees sway

BeeWalk surveys are best done monthly between March and October.

If you wish to record your sightings on the BeeWalk website directly that's fine, just contact the PGC Facebook page and get setup to do this.

## Butterfly species

You can also record any butterfly species you see during your surveys too and there are many useful online resources to help you do this:

<https://butterfly-conservation.org/butterflies/identify-a-butterfly>

A 'name-matching' game can also help you learn the common UK species:

<https://app.memrise.com/course/992656/butterflies-of-the-uk/>

# Bumblebee identification

There are a wealth of resources on the BBCT website with information of the survey scheme itself and also how to ID bumblebee species.

<https://beewalk.org.uk/resources>



The UK has 8 common species of bumblebee, called 'The Big 8'.

This is a very good introduction to UK bumblebee species.

<https://www.bumblebeeconservation.org/wp-content/uploads/2017/11/ID-sheet-big-8.pdf>

[https://www.youtube.com/watch?v=A\\_6ixf3Ui8U&list=PLPhsa9yg1KN-cr3bAuJ59PmIKtgmTbkO0&index=5](https://www.youtube.com/watch?v=A_6ixf3Ui8U&list=PLPhsa9yg1KN-cr3bAuJ59PmIKtgmTbkO0&index=5)

If you are unsure which bumblebee you see you can simply record it as 'bee'.



**Buff-tailed bumblebee**  
*Bombus terrestris*



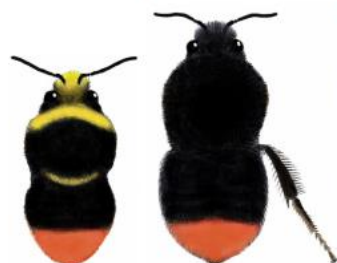
Worker/male      Queen

**White-tailed bumblebee**  
*Bombus lucorum*



Male      Queen/worker

**Red-tailed bumblebee**  
*Bombus lapidarius*



Male      Queen/worker

**Early bumblebee**  
*Bombus pratorum*



Male      Worker      Queen

**Garden bumblebee**  
*Bombus hortorum*



Queen/worker/male

**Heath bumblebee**  
*Bombus jonellus*



Queen/worker/male

**Common carder bee**  
*Bombus pascuorum*



Queen/worker/male

**Tree bumblebee**  
*Bombus hypnorum*



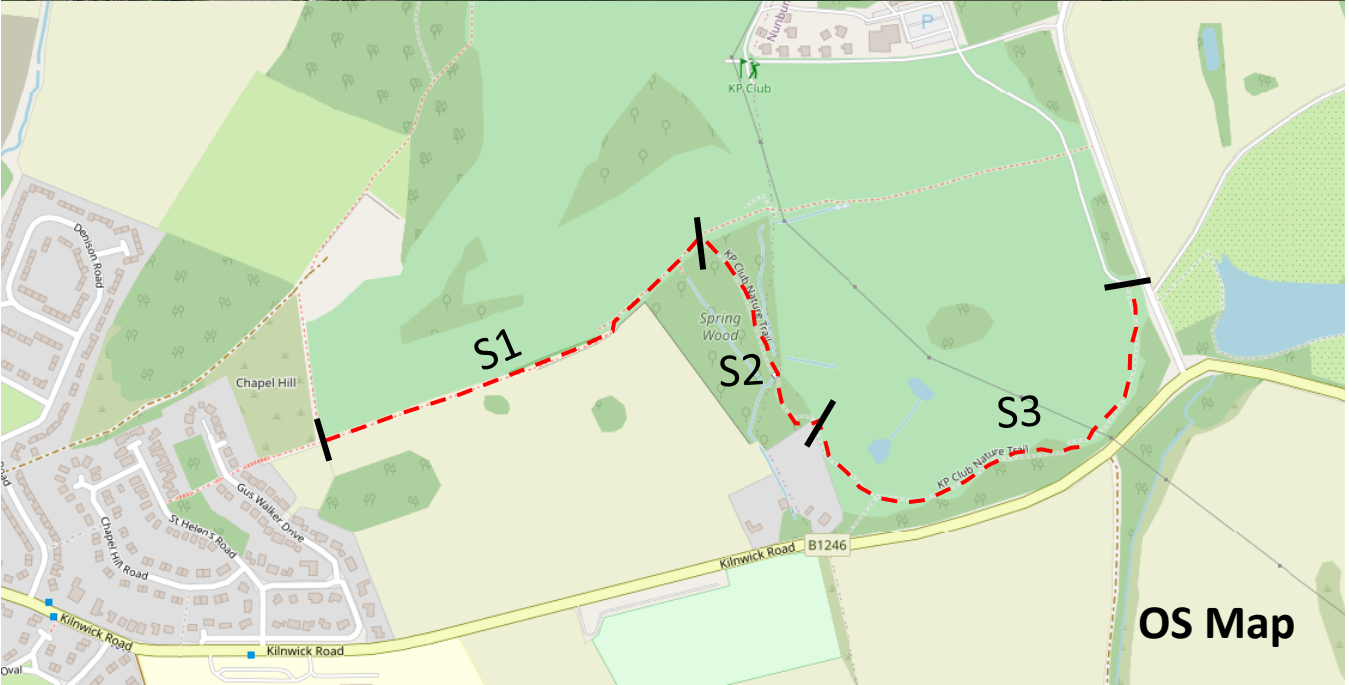
Queen/worker/male



# Kilnwick Percy Nature Trail

The transect starts at the top of Chapel Hill and follows the edge of the Kilnwick Percy Golf Club.

Broken into 3 sections, the first and third follow the public right of way around the edge of the golf course with the middle section running through Spring Wood.



# Pocklington Beck Trail

This transect starts at the field closest to Robb Street and runs parallel to Pocklington Beck.

Each of the four fields denote the sections along the transect which terminates at the penultimate field before reaching the A1079.

Note: Bee numbers here are affected by the quality of the field margins. If they have been cut recently you may not see many bees so make a note of this when submitting your records to the PGC.

