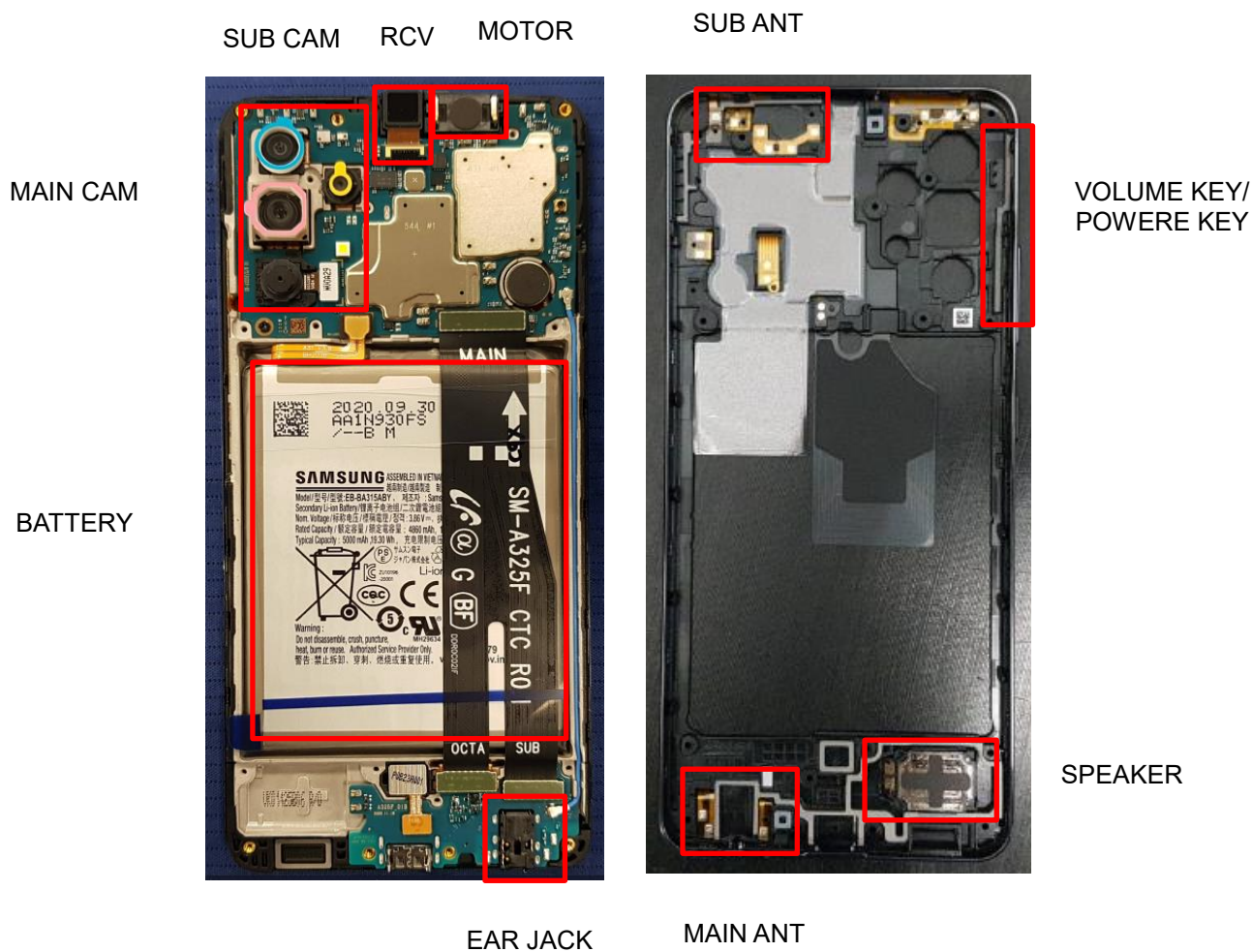


---

## 7. Level 2 Repair

---

### 7-1. Components on the Rear Case



---

## 7. Level 2 Repair

---

### 7-2. Pre-requisite

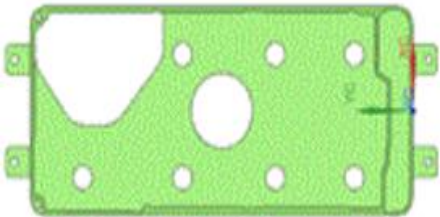
	
<b>Tweezers / Disass'y Stick / Screw Driver</b>	<b>Anti-static Gloves</b>
	
<b>Anti-static Mat</b>	<b>AOD</b>
	
<b>Ethyl Alcohol</b>	<b>Cotton Swab</b>

---

## 7. Level 2 Repair

---

### 7-3. Parts which must be changed after repair

BOM Description & part code	Image	Remarks
<p>TAPE BACK COVER SVC</p> <p>[GH81-20314A]</p>		<p>Replace for Back Cover repair</p>

## 7. Level 2 Repair

### 7-4. Disassembly

1

Prepare samples to be disassemble



2

1) Put the device in the chamber as following below heating condition.

-SOC 68% ↓ : 70°C/10~20 min

-SOC 68% ↑ : 70°C/10~20 min

Please confirm the heating condition released lastly, and follow it.

2) Separate Rear cover using AOD.



※ Caution

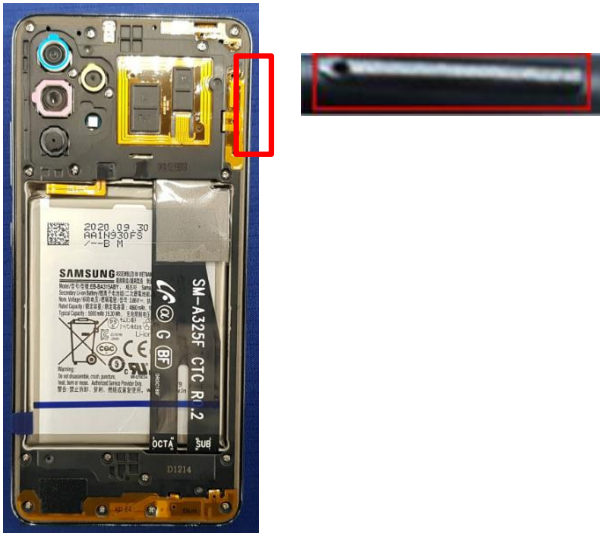
Be care of scratch

※ Caution

Be care of scratch

3

Remove SIM/SD Tray



※ Caution

Be care of Rear damage

4

Remove all 17 points of Rear Screws

\* Torque Value :  $1.3 \pm 7\%$



※ Caution

Be care of Rear damage

## 7. Level 2 Repair

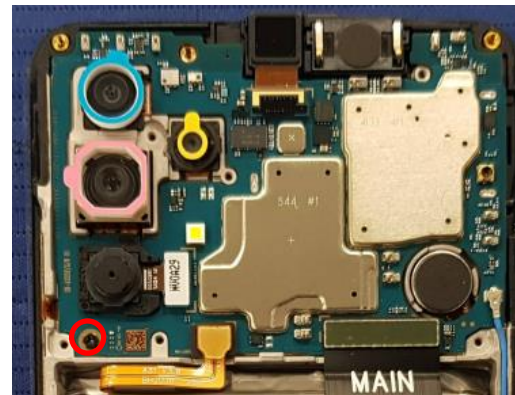
5

Open volume key side using disassembly tool.



6

Remove 1 PBA screw  
\* Torque Value :  $1.1 \pm 7\%$



※ Caution

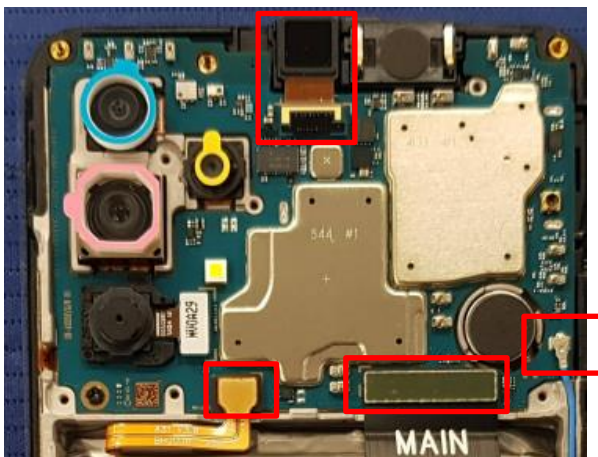
Be careful not to damage the PBA

※ Caution

Be careful not to damage the PBA

7

Remove the PBA and C to C FPCB and Batt Conn and coaxial cable and VT Camera Conn.

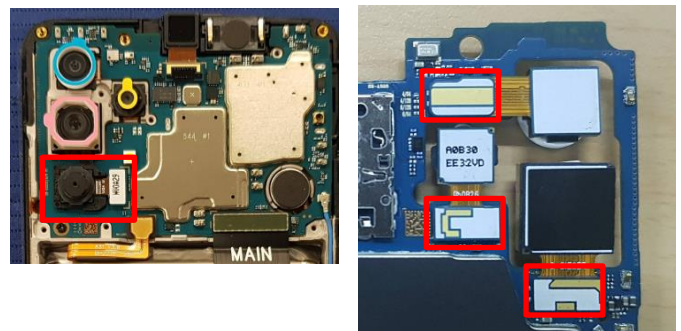


※ Caution

Be care of several kinds of damage at PBA and FPCB

8

Remove MAIN CAM connectors



※ Caution

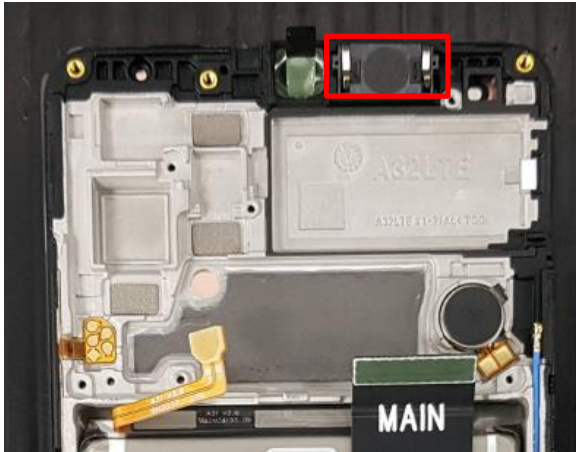
Be careful not to damage the Camera Module



## 7. Level 2 Repair

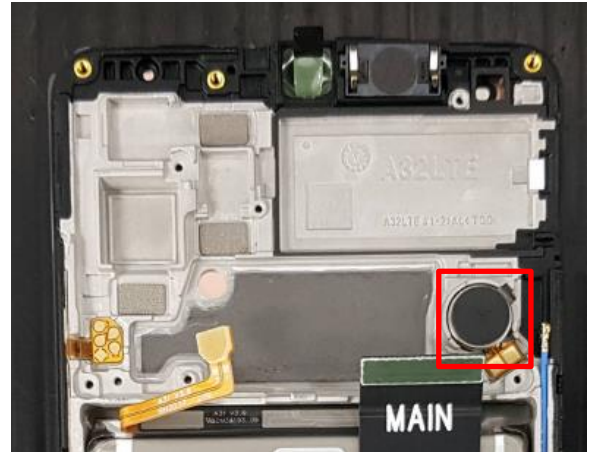
9

Detach RCV from Front Ass'y.



10

Detach Motor from Front Ass'y.



※ Caution

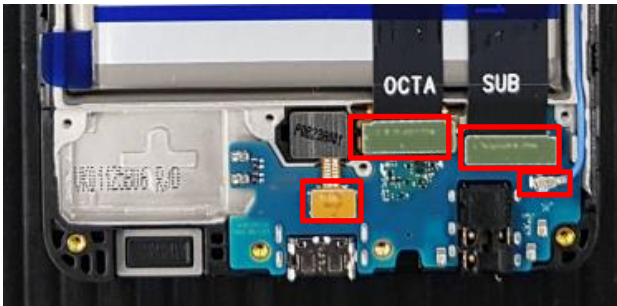
Be careful not to damage the RCV.

※ Caution

Be careful not to damage the Motor.

11

Remove OCTA/SUB/FINGER FPCB and Coaxial cable.



12

Detach serew and the Sub PBA.  
\* Torque Value :  $1.1 \pm 7\%$



※ Caution

Be careful not to damage the C to C FPCB and BLUE, WHITE coaxial cable.

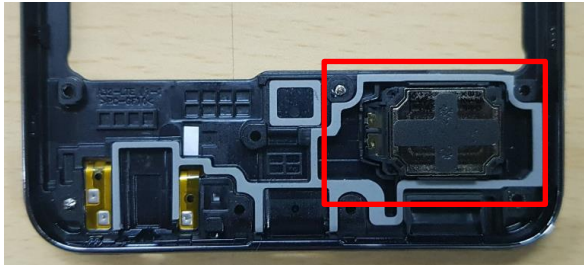
※ Caution

Be careful not to damage HB PBA and the Sub PBA.

## 7. Level 2 Repair

13

Detach SPK from Rear Ass'y



※ Caution

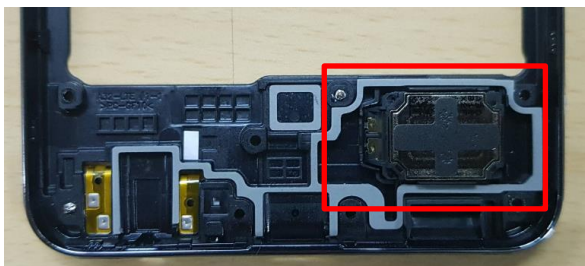
Be careful not to damage the SPK.

## 7. Level 2 Repair

### 7-5. Assembly

1

Attach SPK on Rear Ass'y.



2

Attach screw and Sub PBA on Front Ass'y.  
\* Torque Value :  $1.1 \pm 7\%$



※ Caution

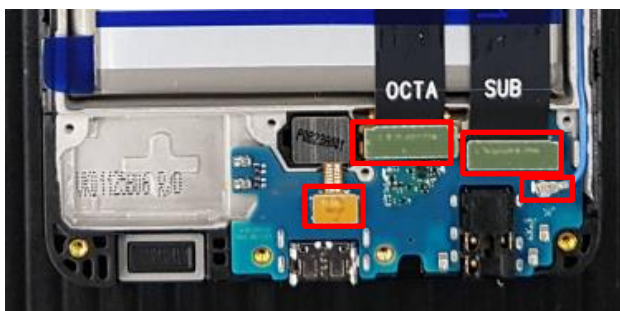
Be care of SPK damage.

※ Caution

Be care of Sub PBA damage.

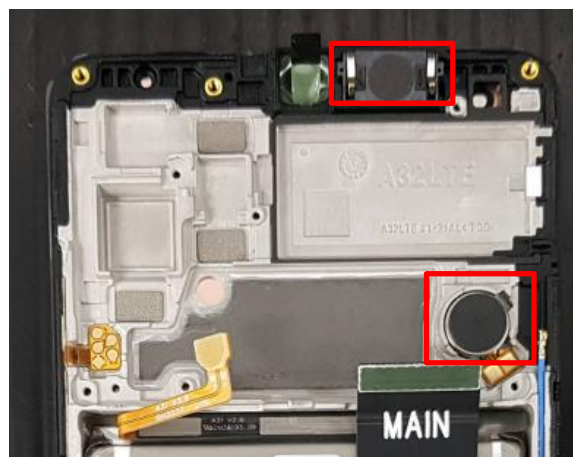
3

Attach OCTA/SUB/FINGER FPCB and Coaxial cable.



4

Attach Motor and Receiver in upper area



※ Caution

Please keep the guide line for C to C FPCB  
and BLUE, WHITE coaxial Cable.

※ Caution

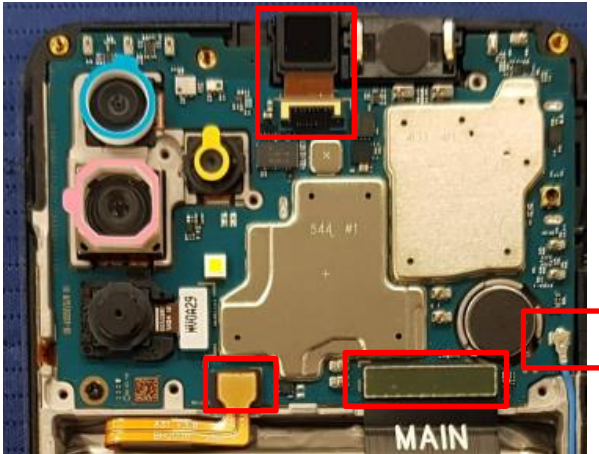
1) Be care of scratch CAM lens  
2) Be care of damage each part.



## 7. Level 2 Repair

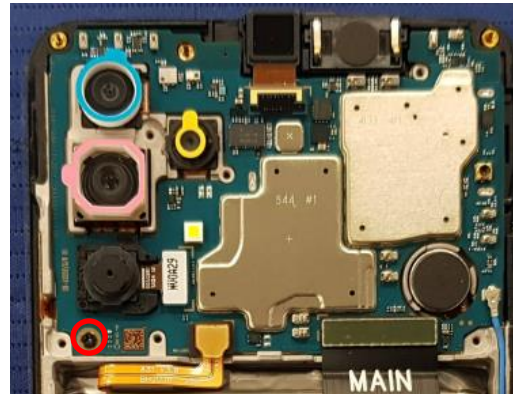
5

Assemble the PBA and C to C FPCB and Batt Conn and coaxial cable and VT Camera Conn



6

Screw insertion 1 Point.  
\* Torque Value :  $1.1 \pm 7\%$



※ Caution

Check for each connector connection

※ Caution

Be care of PBA damage.

7

Assemble Rear and screw insertion 17 point  
\* Torque Value :  $1.3 \pm 7\%$



8

Attach the **back cover outside tape on the back cover** by hands.  
Gently press all adhesive parts of tape using disassembly stick or hands.



※ Caution

Be care of PBA damage

※ Caution

Be care of scratch and tilt.

Confidential and proprietary-the contents in this service guide subject to change without prior notice

Distribution, transmission, or infringement of any content or data from this document without Samsung's written authorization is strictly prohibited.

## 7. Level 2 Repair

9

Assemble cover rear and insert SIM/SD Tray

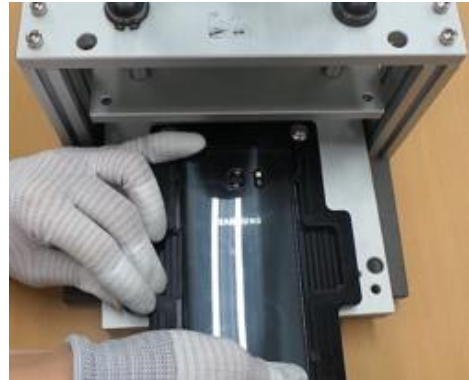


※ Caution

Be care of scratch Rear cover

10

Press the Back Cover using pressing jig and pad.  
- Pressing force : 1N  
- Pressing time : 1 minute  
※ SIM Tray must be separated before pressing the Back cover or OCTA.



※ Caution

Press with 5.5kgf/cm $2 \pm 3\%$  for 8 seconds