



## 125<sup>TH</sup> ANNIVERSARY—REFLECTIONS ON THE PAST AND HOPES FOR THE FUTURE

The Big Rock Plowing Match is a homecoming where generations of families gather, meet with friends, celebrate and create memories. This very special and unique community event has created vivid memories for many across the years from their childhood to today. It is the experience and memories that last forever and the 125th anniversary gives us the opportunity to reflect on our heritage and traditions.

The Association has been served by 31 Presidents covering 33 terms of office over the 125 years from William T. Thomas, 1895-1896 to Roger Hatfield, 1986 to present. Terms of service ranged from 2 years to 33 years. Two Presidents, E.C. Whildin and Ernest R. Lash served twice in non-consecutive terms. Terry Smith and Harlan Schmidt served as Co-Presidents for one term. We are most grateful to the men and their families for everything they have done to keep the plowing match alive and well. A complete list of the Presidents is on our website.

Fourteen members make up the current Association Board with over 270 combined years of service ranging from one year to 52 years.

- ◆ Roger Hatfield, 1967–52 years
- ◆ Craig Thomas, 1978–41 years
- ◆ Bonnie Warchol, 1990–29 years
- ◆ Bill Brickert, 1978–1995, returning 2008–28 years
- ◆ Kim Hummell, 1993–26 years
- ◆ Gene Nehring, 1995–24 years
- ◆ John Thompson, 2000–19 years
- ◆ Anita Novicki, 2002–17 years
- ◆ Terry Sorensen, 2003–16 years
- ◆ A. Denise Farrugia, 2010–9 years
- ◆ Bob Raymond, 2016–3 years
- ◆ Dawn Stegall, 2017–2 years
- ◆ Steve Ruh, 2017–2 years
- ◆ Sarah Magro, 2019–first year

Roger Hatfield has the distinction of the most years of service and his story begins a long time ago as a childhood experience that influenced and shaped his future. In 1948, Roger came to Big Rock for the Plowing Match with his parents. Walking along the plowing fields his dad explained what it was all about: furrow, depth, width, straightness of line, trash and general neatness.

Roger was fascinated. In 1949 his family moved from Lily Lake to Big Rock living on farms on Swan Road, Dauberman Road and Rt. 30 and Dauberman Road over the years.

His dad Haskell, worked for Big Rock Implement and as a hired hand for Loraine Thomas. As the son of a farmer, Roger remembers his days in Future Farmers of America (FFA) when they ran the Tractor Rodeo at the Plowing Match. This timed event included multiple tests of skill. One involved hitching up a manure spreader to a tractor and taking it through a barrel and post course and another involved a hay rack on a course requiring pulling out, turning around and backing in while at the same time not disturbing ping pong balls on top of corner posts. As a young adult he also enjoyed directing parking on horseback at the plowing match.

Fast forward to 1967 when Roger had an instrumental role in the building of Kenny Field and so began his years of service to the Plowing Match. Reflecting on 33 years as president, Roger feels the most significant achievement of the Association is “that it *exists*” to celebrate and promote our agricultural heritage. Surviving as a non-profit organization and providing a free event for the community is rare in an age where entertainment tends to reign. It was important to preserve the community’s history. Roger was instrumental in establishing the Big Rock Historical Society, originally planned to be part of the Plowing Match, a separate organization was created with the appointment of Jack Hake as President. Take a look at the Plowing Match highlights, many achieved since 1986. Roger deflects recognition of what he has accomplished and speaks of what the Association has achieved. He is extremely proud of the Plowing Match and Plowman’s Park, as he should be, we are deeply appreciative of all his years of service. Roger will be concluding his term as President in December 2019 and will continue to serve on the Board through 2020, assisting where needed. He believes the future of the plowing match is to have community members step up and keep the tradition rolling.

The 125th fundraiser addresses the Association’s need for financial support from the community. To date over \$22,000 has been raised enabling improvements in the restrooms, Ladies Fair building and lunch stand. The list of donors appears on page 4. Together we are building for the future.

# SCHEDULE OF EVENTS

## FRIDAY, SEPTEMBER 13

Bicycle Parade (begins at fire barn)	5:15 pm
Carnival "Wristband Night"	5-9 pm
Live Music-Wooden Rockers	6-9:30 pm
Olde Time Baseball	7 pm

## SATURDAY, SEPTEMBER 14

Western & English Horse Show	8:30 am
Drawing for Lands	9 am
Farmers Market Silent Auction (starts)	9 am
Plowing	9:30 am
5 B's BBQ Pork Chop & Chicken Dinner	11:30 am-2 pm
Children's Races (in the cattle ring)	12 pm
Junior Fair Baked Goods Auction	1 pm
Ladies Fair Baked Goods Auction	1:30 pm
Pedal Tractor Pull (in the cattle ring)	2:30 pm
Round Bale Roll-off (in the cattle ring)	4 pm
Plowing Trophy Presentation	4:30 pm
Live Music-Kylee & Wild Bill	5-8 pm

## CARNIVAL RIDES

Friday	5-9 pm
Saturday	1-5 pm

*Wristbands available pre-sale and on-site Friday.  
Individual ride tickets Saturday, \$2.*

## FUN FOR THE KIDS

- Petting Zoo
- Children's Races
- Pedal Tractor Pull
- Prairie State Railroad Club Train Rides
- Watermelon Eating Contest
- Prince & Princess Contest

## SUNDAY, SEPTEMBER 15

Tractor Trot 5K	8 am
Drawing for Lands	9 am
Plowing	9:30 am
Church Service	10 am
Watermelon Eating Contest	11 a.m.-1 pm
5B's Old-fashioned Roast Beef Dinner	11 a.m.-1:30 pm
Bags Tournament	1 pm-4 pm
Farmers Market Silent Auction (End)	1 pm
Cattle Show (in the cattle ring)	1 pm
Prince and Princess Contest	1:30 pm
BINGO - Big Rock Park District (pavilion)	2:30 pm
Beef Auction (in the cattle ring)	3 pm
Plowing Trophy Presentation	4:30 pm

## CONCESSIONS

Friday	5-9 pm
Saturday	7:30 am-5 pm
Sunday	8 am-5 pm

## CRAFT & ART SHOW

Saturday	9 am-5 pm
Sunday	11 am-4 pm

## BEER GARDEN

Co-sponsored by Big Rock Fire Department and Plowing Match Association. Beer and wine served.

Friday	5-10 pm
Saturday	Noon-Close
Sunday	Noon-Close

# PLOWING STRAIGHT

This appeared in the 1994 issue of *Plowing Match Times* in celebration of the 100<sup>th</sup> Anniversary. It was submitted by Jack Hake with special congratulations to Roger Hatfield, President, Big Rock Plowing Match Association.

I remember as a youngster,  
When my father said to me,  
Looking forward down the furrow,  
And then right down at me,  
"Always plow as straight a furrow  
as it's possible to do;  
Men will judge you by your plowing  
When they think of hiring you.  
If your furrow is crooked  
And you don't plow deep and true,

They'll know you're not the worker  
For the task they want to do."  
What a practical philosophy,  
I suspect it can't be beat.  
Whether work or life or morals,  
Let's keep those furrows neat.

—R.W. Cooper

## PLOWING MATCH HIGHLIGHTS OVER THE YEARS

Established in 1895 based on the Welsh heritage of the community. G.W. Thomas had attended the Wheatland Match for several years and after talking about it with his neighbors they decided to hold their own competition.

### October 12, 1895 Winners and Contestants

*From minutes after the first Big Rock Plowing Match*

- ◆ Class 1-Gang Plow: Frank Miller, 1st prize \$6
- ◆ Class 2-Riding Plow: Charles Brackett, 1st prize \$4; Richard Thomas, 2nd prize \$4. George Thomas.
- ◆ Class 3-Walking Plow: Benjamin Thomas, 1st prize \$6; Joel Thomas, 2nd prize \$4; William Edwards, 3rd prize \$2. Lew K. Owens and Samuel Rowlett.
- ◆ Class 4-Boys under 18 years of age with any kind of plow: no entries
- ◆ Sweepstakes Best in any Class: Benjamin Thomas, \$5

Acting Field Committee: Walter Scott, W.D. Powell & S.A. Chapman.

George Thomas was disqualified because he plowed with two horses on a 3-horse plow. Samuel Rowlett plowed only part of his land because it was too hard. A.E. Stark of Wheatland plowed with a Hummer Gang for Andrew Welch to show the plow.

- ◆ 1901-Prizes introduced. Plowing: horse blankets, a rifle, a saddle and a spring seat. Ladies Fair: jute spread, silver butter dish and a silk umbrella
- ◆ 1908-Ladies Fair hosted a baby show for children under 6-months: prettiest twin babies, fattest baby, prettiest boy and prettiest girl. Prizes were dresses, shoes and socks, baby spoon and baby pins.



- ◆ 1922-Horseshoe pitching contest introduced
- ◆ 1937-Big Rock's big rock installed at the corner of Rt. 30 and Rhodes Avenue courtesy of the Plowing Match
- ◆ 1940-First female competitor, Mary Kay O'Connell, in plowing. She didn't win, but got a ton of publicity for the Plowing Match.
- ◆ 1949/1950-Plowing Match Association purchased the W.E. Thomas Grove, 19 acres at \$250 per acre
- ◆ 1951-Big Rock Plowing Match Association incorporated. Plowing Match became a two-day event with Sunday called Homecoming Day and Union church services were held

- ◆ 1952-Ladies Fair and lunch stand buildings built. Tents were still being used for school exhibits and other events.
- ◆ 1957-Dwight and Anna Davis bought land with the idea that it could be used for the plowing competition as this field was convenient to the park. The tradition has continued to this day, thanks to Dwight, Harley and Marvel Davis.
- ◆ 1957-The Plowing Match became a two-day mini-fair expanding on the plowing, Ladies Fair and dinners
- ◆ 1961-Davis Field was first used as home to the plowing match competition.



- ◆ 1963 - Big Rock Cowhands 4-H Club, with John Almburg and Paul Potter, built the cattle arena.
- ◆ 1967-Kenny Field was built in just 5-weeks with 325 cash contributions, and an estimated 8,500 hours. "Big Rock's young and old worked together seven days a week to string electrical wire, lay blocks, shovel dirt, set light poles, and assist in any other necessary work."
- ◆ 1970-Plowing Match and Kenny Field Boards became one Association
- ◆ 1970's-Plowing competition introduced Novelty Class to display unusual plows and equipment
- ◆ 1984-Horse Show introduced
- ◆ 1988-Fun Run/Walk introduced
- ◆ 1989-Park District introduces the Prince & Princess contest
- ◆ 1990/91-Prairie State Railroad Club begins laying track to be able to run trains and offer rides
- ◆ 1991-Horse show arena installed and schedule of classes expanded
- ◆ 1994-Round Bale Roll Off contest introduced
- ◆ 1998-Bicycle parade introduced
- ◆ 1999-Big Rock Cowhands 4-H Club raffled off a hog at the Plowing Match
- ◆ 2017-Kenny Field 50th Anniversary
- ◆ 2018-Introduced Beer Garden and Bags Tournament
- ◆ 2019-First bull riding event

With the past and present on our minds, we look to the future with the hope of preserving the tradition for many generations. Thank you for your continued support of the Big Rock Plowing Match Festival.

## 125<sup>TH</sup> FUNDRAISER

Last year the Association reached out to the community for additional funding to build for the future and raise \$12,500 dedicated exclusively to the renovation and maintenance of Plowman's Park. And you did embrace our fundraising request by giving over \$22,000. Your generosity has enabled the Association to take action on various items on our checklist. Thank you so very much for your contribution and in-kind support, it is making a world of difference at Plowman's Park.

### CONTRIBUTORS

- |                                 |                                       |                                    |
|---------------------------------|---------------------------------------|------------------------------------|
| ◆ Dennis Baie Memorial          | ◆ Orville & Diane Howard              | ◆ Bob & Deb Raymond                |
| ◆ Bartoszek Family              | ◆ Dale Johnson                        | ◆ Robert J. Raymond                |
| ◆ Big Rock American Legion      | ◆ Rich & Sharon Kokes                 | ◆ Ray Vac Plastic Decorators, Inc. |
| ◆ Big Rock Lions Club           | ◆ Dale & Debra Krahn                  | ◆ John & Mary Rogerson             |
| ◆ Ron Burgess & Denise Farrugia | ◆ Lester & Joyce Landmeier            | ◆ Dan Schleifer                    |
| ◆ Davis Farm LTD Partnership    | ◆ Lester & Valerie Landmeier Families | ◆ James & Marion Scott             |
| ◆ William & Elaine Fischer      | ◆ Jim & Norma Leifheit                | ◆ Shala Farms – The Paver Family   |
| ◆ Duane & Denise Groch          | ◆ Karen Levandowski                   | ◆ Pat & Debbie Testin              |
| ◆ Leslie R. Heerdt              | ◆ Steve & Sherry Michael & Family     | ◆ Bruce & Mary Thompson            |
| ◆ Alexa Hill                    | ◆ Wes Morris, Jr.                     |                                    |
| ◆ John & Kathy Hintzsche        | ◆ Ron & Julie Ness                    |                                    |

Fundraising continues; contributions may be made at the Office during the Plowing Match, through PayPal on our website, or by mail to Big Rock Plowing Match Association, P.O. Box 261, Big Rock, IL 60511

We also asked our kind donors to share their memories of the Plowing Match. We thank them for sharing.

- ◆ Dennis Baie Memorial (Barbara Baie and Bryan & Cyndi Hanacek Family)—Our family has been very fortunate to participate in many events at the plowing match grounds. We have rented the park for birthday & graduation parties and family reunions. Denny always supported the plowing match. We want to honor him and show our appreciation for our small town treasure.
- ◆ Ron Burgess & Denise Farrugia—They told us “get involved, the plowing match is the best” and Rick & Lynne Paver were so right. The tradition and heritage in this unique fall festival is amazing—it celebrates the past within the present with events for the entire family. We may be “newbies” but we know Big Rock is a very special community with the Plowing Match at the center.
- ◆ Alexa Hill—I always enjoy the Plow Match so much and entering the Ladies Fair. Thank you to everyone who puts in so much work to make this a great event! Thanks.
- ◆ Orville & Diane Howard—We have been attending the BRPM since before we moved here over 20 years ago and have always had fun. Our daughter's wedding was here in 2013. We have great memories of Plowman's Park.
- ◆ Dale & Debra Krahn—Dale's grandparents, Frank & Pearl Miller, brought him to the plowing match in the 50's & 60's! Fond memories.
- ◆ Les & Joyce Landmeier—Lester was past president of BRPM Association in 1979-1982 and past president of the Big Rock Softball League at Kenny Field. Joyce was a member of the Ladies Fair Committee and also long-time server for Sunday's beef dinner. She also helped Les on the Kenny Field cleanup committee and was a score board operator. We both enjoyed working to improve the BRPM and are very happy it is still operating as a plowing match for our community. Keep up the good work.
- ◆ Jim & Norma Leifheit—What a wonderful community we live in, when so many volunteers give so generously of their time that we are celebrating 125 years of the Big Rock Plowing Match. Jim and I are both lifelong resident of Big Rock and each have enjoyed attending over half of the 125 plowing matches. Our daughters, Joanne and Carol, have many fond memories growing up in Big Rock of the Plowing Match, especially the horse show which they participated in.  
Jim and I have both been privileged to serve on the BRPM Board. We have also volunteered at the lunch stand, Saturday & Sunday dinners, Ladies and Junior Fairs. Some of our memories include the Truck & Tractor pull, many years of playing softball at Kenny Field and the community coming together to rebuild the lunch stand building after it was destroyed by a storm.  
We hope, with the continued support of the community, the Big Rock Plowing Match will continue for at least another 125 years!
- ◆ Steve & Sherry Michael & Family—We are so proud to support the tradition and heritage that the Big Rock Plowing Match continues to provide through 125 years. The BRPM has been enjoyed in our family for six generations. I have many fond memories of plowing match weekends while growing up as a child in Big Rock. It is with pleasure that my wife and I provide our support in order that future generations can continue to enjoy these experiences.
- ◆ John & Mary Rogerson—Thanks for being a great partner in bringing “The Best Car Show” to Big Rock at Plowman's Park!
- ◆ Dan Schleifer—Glad to help.
- ◆ Shala Farms/The Paver Family—We just love the Plowing Match and want to support it!
- ◆ Bruce & Mary Thompson—Residents for 19 years who just want to help out.

## WINNERS OF THE 124<sup>TH</sup> PLOWING MATCH COMPETITION, 2018

### SATURDAY, 9/15/2018

#### 15 & Under Class

No entries

#### 19 & Under Class

- 1st—Jackson Kettlekamp of Elburn, 79 points  
2nd—Joe Turk of Elburn, 77 points

#### Farmers Open Class

- 1st—Mark Nier of Kiel, WI, 92½ points  
2nd—Trent Pierson of Elburn, 90½ points  
3rd—Erich Turk of Elburn, 85 points  
4th—Tie at 81 points: Steve Hauser of Hinckley and Dana Nehring of Big Rock

#### Prizewinner Class

- 1st—Sandra Bullington of Athens, AL, 78½ points  
2nd—Kurt Wurster of Aurora, 75 points

#### Expert Plowman Class

- 1st—Mike Winckler of Erie, 89½ points  
2nd—Rick Wolf of Erie, 83 points  
3rd—Paul Evans of Big Rock, 75 points  
4th—Tie at 68 points: Tom Evans of Big Rock and Jerry Thomas of Batavia

#### Novelty Class

- 1st—Kris Johnson of Cortland  
2nd—Bruce Johnson of Rochelle  
3rd—Gregg Mitchel of Northwoods  
4th—Carson Underwood of Shabbona

### SUNDAY, 9/16/2018

#### Antique Rubber Class

- 1st—Mike Winckler of Erie, 95½ points  
2nd—Rick Wolf of Erie, 93½ points  
3rd—Mark Nier of Kiel, WI, 92¼ points  
4th—Scott Temple of Erie, 90½ points

#### Antique Steel Class

- 1st—Paul Evans of Big Rock, 89 points  
2nd—Trent Pierson of Elburn, 86 points  
3rd—Jerry Thomas of Batavia, 80½ points  
4th—Tom Evans of Big Rock, 70 points

#### Novelty Class

- 1st—Gregg Mitchell of Northwoods  
2nd—Bruce Johnson of Rochelle  
3rd—Kris Johnson of Cortland

*Sweepstakes Winner*  
Mike Winckler of Erie

## SCORECARD OF THE BIG ROCK PLOWING MATCH

### SATURDAY AND SUNDAY

9:00 am Sharp	Drawing for Land
9:30 am	Plowing Starts
4:00 pm	Trophy Presentation

Total Possible Points: 100 Perfect Score  
25 points: Low back furrows distinct (back to be slightly crowning and all trash covered)  
25 points: Furrows of uniform depth and width, showing slight ridge and distinct from end to end  
25 points: Line of furrow  
15 points: Covering of trash  
10 points: General neatness of the whole and appearance of ends

- ◆ All plowmen must plow 5 inches but not more than 7 inches deep.
- ◆ All plowmen must make 7 rounds.
- ◆ No assistance to any plowmen after the first round.
- ◆ All plowmen using 16-inch plows must plow not less than 14 inches.
- ◆ All plowmen using 14-inch plows must plow not less than 12 inches.
- ◆ All plowmen using 12-inch plows must plow not less than 10 inches.
- ◆ All plowmen must leave the field at designated finish time, unless granted more time by field committee for some reasonable cause.

All plowmen will be scored back:

- ◆ 4 points for each foot in width for not finishing the land by the specified finish time.
- ◆ 4 points for each inch less than the minimum depth of 5 inches.
- ◆ 4 points for each inch in excess of the maximum depth of 7 inches.

### CLASSES ON SATURDAY

- ◆ Boys and Girls 15-and-Under Class
- ◆ Boys and Girls 19-and-Under Class
- ◆ Farmers Open Class
- ◆ Prizewinners Class: Plowmen who have taken two first places in the Farmers Class qualify to compete in this class.
- ◆ Expert Plowmen's Class: Plowmen who have won first place two successive years in the Prizewinners Class must compete in this class.
- ◆ Horse or Mule Class
- ◆ Novelty Class: Judged on unit only, plowing does not enter in judging. Plowmen in this class are not required to make 7 complete rounds.

### CLASSES ON SUNDAY

- ◆ Antique Rubber Class: Tractors made before 1939
- ◆ Antique Steel Class: Tractors made before 1939
- ◆ Novelty Class: Judged on unit only, plowing does not enter in judging. Plowmen in this class are not required to make 7 rounds.

### SWEEPSTAKES

Given to the plowman with the highest score during the Plowing Match, except those entered in the Expert class.

# PLOWING MATCH HOST FARMS, 1895-1961

Davis Field was the site of the plowing competition on September 16-17, 1961. Over the preceding years, the competition had been hosted by 28 individual farms in Big Rock Township. This was the first year at the location and it was the beginning of the home site for the plowing match. Dwight Davis bought this land with the idea that it be used for the plowing competition, as this field was convenient to the park. The tradition has continued to this day and the Association gratefully thanks Dwight, Harley and Marvel Davis for this wonderful gift.

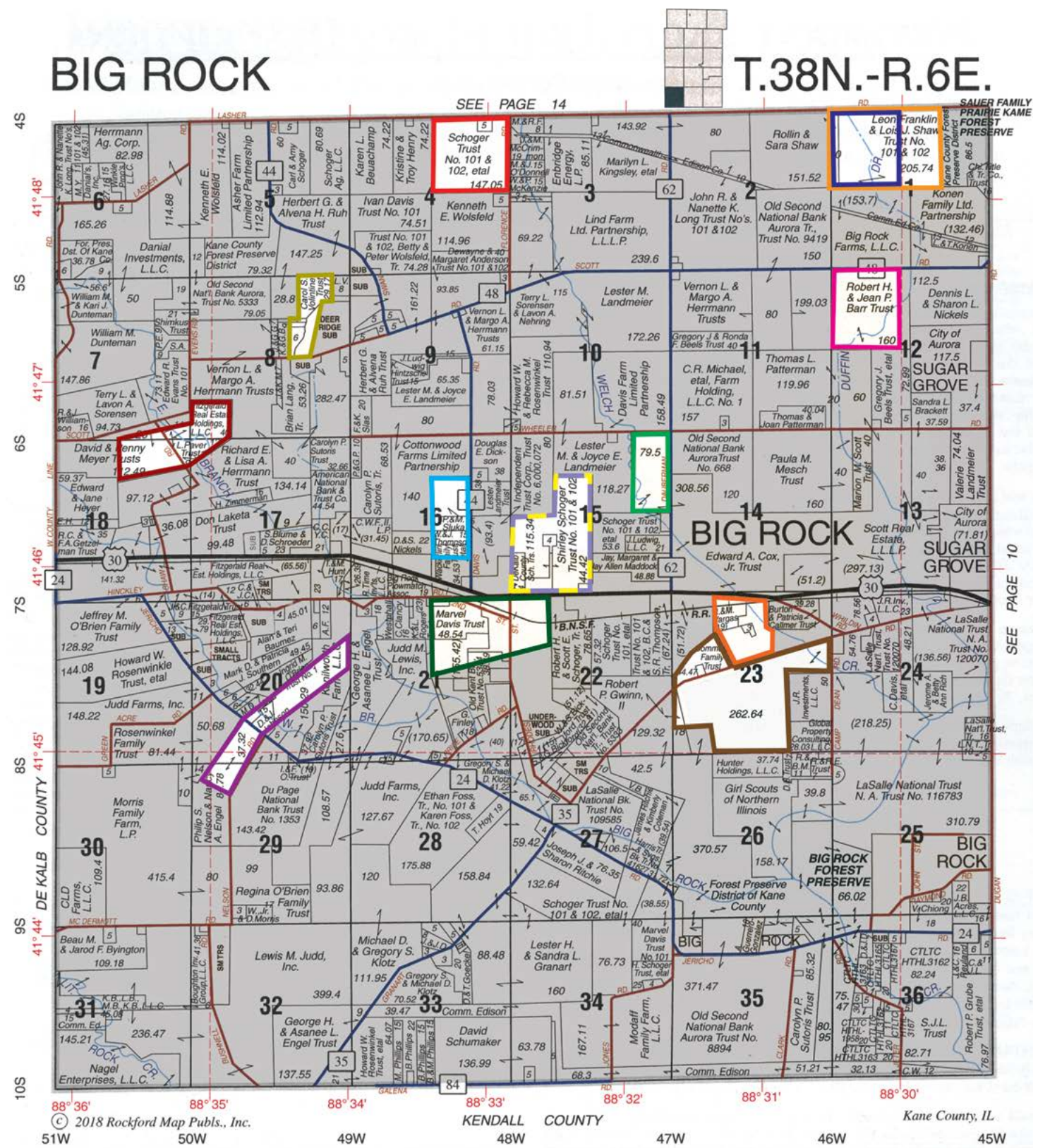
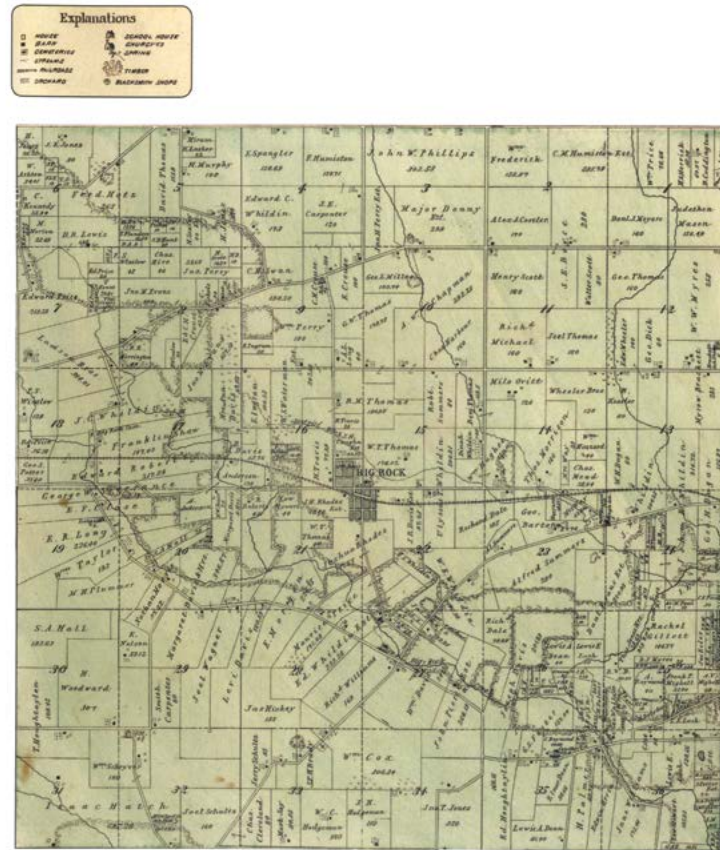
The first site was the G. W. Thomas farm used just that one time, as were 21 other farms. The H. S. Long farm hosted the plowing 22 times. The alphabetical list indicates the number of times each farm hosted the plowing match and the location on the plat, if known. The entry after the farm indicates where the dinner and other activities were held when not held at the farm.

This is a first attempt to map the location of Plowing Match host farms. Using historical plats of Big Rock Township and a chronological listing of the farms, the locations are marked on the 2018 township plat (*opposite page*). We have also included the 1892 township (*right*) plat as a historical reference. Numbers in parentheses indicate the number of times the Plowing Match was held at this farm.

We thank the following for their assistance in gathering information: Big Rock Library, Steve Arnold-Kane County Farm Bureau, Tim Mescher-Kane County GIS Mapping Coordinator, Roger Hatfield, Mr. Snow and others who pored over township plats with a magnifying glass to create this draft.

We need your assistance to verify the correct location of the host farms. Please contact Denise at 630-556-4771 with your information. Thanking you in advance for your kindness. You will find the chronological listing of the farms and other historical information on our website.

## BIG ROCK T38N • R6E



- A.T. Peterson Farm
- J.C. Biehl Farm (2)
- Dale Brothers Farm, Robert Williams Grove
- William Davis Farm [Section 4]
- John Evans Farm, Ira Jones Grove [Sections 8 & 18]
- Fountain Farm, William Thomas Grove (2)
- Ingram Farm, Joel Thomas Grove
- Will James Farm, Joel Thomas Estate
- W.T. James Farm, Joel Thomas Grove [Section 16]
- H.S. Long Farm (22) [Sections 20 & 29]
- Russell Long Farm, Plowing Match Grove
- Thomas Perry & A.D. Crouse Farm
- Tom Perry & Shaw Farm [Section 1]
- Mrs. Price's Farm [Section 1]
- Roy Raymond Farm [Section 8]
- Joshua Rhodes Farm (6) [Section 21]
- Edward Roberts Farm (2)
- Elmer Stahlman Farm, W.E. Thomas Grove
- Summer & Biehl's Farm, W.E. Thomas Grove [Section 23]
- G.W. Thomas Farm [Section 15]
- Hanley Thomas Farm, W.E. Thomas Grove
- Hiram Thomas Farm, Joel Thomas Grove [Section 12]
- Lawrence Thomas Farm (2) [Section 15]
- W.H. Thomas Farm, W.E. Thomas Grove (3)
- William T. Thomas Farm [Section 15]
- Michael Tinerelli Farm (2) [Section 23]
- Hiram Travis Farm, Joel Thomas Grove
- Whildin Brothers Farm, Joel Thomas Grove

# 35<sup>TH</sup> ANNUAL HORSE SHOW—SATURDAY

STARTS PROMPTLY AT 8:30 AM

It doesn't seem that the Plowing Match is 125 years old and that the Horse show is only 35 years young! I guess it's true that time flies when you are having fun. That's the way it is for the Horse Show Committee. The core committee has been together for most of the last 35 years. We all look forward to putting together this event year after year. It's what keeps us all young at heart.

We have always been blessed with volunteers and sponsors that make each event better than the year before. Plus we are blessed with 'new blood' to help keep the Show different and fresh.

All the volunteers concentrate on making the Show challenging and fun for all. Even our judge is picked on the basis of recommendations from other horse show committees and how they have performed at our show. The Judge's focus must be on the rider and how to make their

performance even better. This year's judge, Karen Sander from Union, Illinois comes highly recommended as a great judge.

As always, the show will be competitive and most of all – FUN! For many of the riders, this is the show they look forward to most because of the competition and fun they have. Even the novice finds it fun to compete especially without pressure. The show bill this year contains a few different fun events suggested by last year's contestants and we appreciate their input. Check out this year's Show Bill in this newsletter.

If you would like more information on the show or one of the events, please call the committee Chairwoman (for the last 32 years), Bonnie Warchol, at 630-556-3501 or by e-mail at brw1964@gmail.com. She'll be able to answer all your questions.

**The Big Rock Park District Board:**  
Gene Nehring • Bonnie Warchol •  
Bill Yoder • Cindy Nehring •  
Steve Holub

**Salutes 125 years of the  
Big Rock Plowing Match**

**Big Rock  
Park District  
Community Park**

WELCOME  
PARK HOURS  
DARK TO DARK  
CALL 634-5557  
FOR SHELTER  
RENTAL

## Classes

1. Open Halter – English & Western
2. Open Pony Halter (14.2" & under) English & Western
3. Open Showmanship – English & Western
4. Western Horsemanship (15 and Under)
5. Western Horsemanship (16 and Over)
6. Open Western Horsemanship
7. Western Pleasure (15 and Under)
8. Western Pleasure (16 and Over)
9. Open Western Pleasure
10. Lead Line\*\*
11. Walk Trot\*\*
12. English Pleasure (15 and Under)
13. English Pleasure (16 and Over)
14. Open English Pleasure
15. English Equitation (15 and Under)
16. English Equitation (16 and Over)
17. Open English Equitation
18. Open Calcutta (\$\$\$) Pleasure Class

*Audience bids to own the horse and rider. All monies bid is pooled and distributed to winning "owners" based on placement of top three horses. First place, 50%, second place, 35%, third place, 15%. Riders receive trophies and ribbons.*

## Just for Fun

19. Musical Cones
20. Open Command Class
21. Egg and Spoon Race
22. Bribe Your Horse
23. Ride-A-Buck (bareback)

## Classes

24. Grooms Class\*\*
25. Non-Blue Ribbon Winner Performance Class

Classes: \$5 per event

## General Guidelines

- ◆ All contestants must wear proper attire except in classes: 10-19-20-21-22-23-24. The decision of the judge is final.
- ◆ Five-minute tack change allowed if notified to the announcers booth.
- ◆ NO ONE under the age of 18 may show a Stallion.
- ◆ The Show Committee has the right to combine, cancel or divide a class when necessary (3 entries per class minimum).
- ◆ The Show Committee has the right to refuse check or issue tabs. A \$40 charge on all returned checks.
- ◆ Entries are non-refundable.
- ◆ The Horse Show is not liable for theft, accident or injury to rider, equipment or horse.

The Show is designed to be educational, fun and may be financially rewarding.

- ◆ Cash awards to high point winners.
- ◆ All ribbon winners are eligible to win a \$100 cash prize. Drawing at end of show. You must be present. No Stand-ins please.

**High Point Awards: age 15 and Under**  
1-2-3-4-6-7-9-12-14-15-17-18-25

**High Point Awards: age 16 and Over**  
1-2-3-5-6-8-9-13-14-16-17-18-25

JUDGE: Karen Sander, Union

Ample trailer parking available.  
Lunch break at approximately 12:30 pm

Need more information? Contact Bonnie at (630) 556-3501 or email brw1964@gmail.com

*\*\*Walk Trot, Lead Line and Grooms Class - Participants in these events are not eligible for any other performance class. Lead Line riders are not eligible for Walk Trot Class (11).*

**DUGAN'S SERVICE INC.**

**(630) 556-3755**

46W637 US Highway 30,  
Sugar Grove  
(3 miles west of Aurora Airport)

**Mike Dugan, Owner**

*Serving the Community  
for Over 35 Years*

**Quality, honest  
auto service**

Towing • Storage Units  
Tires • Transmission  
Engine Repair • Brakes  
Tune-Ups • Exhaust • 4x4  
Repair • Suspension Work  
• And more

Mon. - Fri. 8 a.m. - 5 p.m.; Saturday by Appointment  
**SATISFACTION GUARANTEED**

**Big Rock Shopping  
Destination**

**More Polish Pottery**  
www.morepolishpottery.com

More Polish Pottery is a local gift shop in Big Rock IL. We are famous for our wide selection of Polish-made items and our beautiful property, nicknamed the "Pottery Field of Dreams".

**Open 7 days a week!**

85953 Jericho Rd.  
Big Rock, IL 60511  
(630) 605-2371

www.morepolishpottery.com

Open 7 days a week!  
f i y

## LADIES FAIR ACROSS THE YEARS

September 1897—the Ladies Department of the 3rd Annual Plowing Match invited residents of Big Rock township to enter and showcase their talent. The premium list included baked items of light biscuits, an orange layer cake and fruit cake, sugar cookies, pumpkin and mince pies; canned goods of pears, pickles, mustard, grape and current jelly, peaches, plums and cherries; and hand-stitched quilts, embroidered items, lace, pillow slips and a collection of potted plants. Awarded premiums/prizes ranged from 25 to 75 cents, as well as a china salad dish, silver butter or fruit dish, silk umbrella and crocheted bed spread. Also included were three items girls under 13 years could enter, as well as a grain show.

1900—the 6th annual, introduced two premium lists: one exclusively for town residents who were invited to enter cherry pie, canned pears, coffee cake, sofa pillow, head rest and the early years of the photography category requested 6-Kodak views. The second premium list was open to residents of five townships: Big Rock, Kaneville, Sugar Grove, Little Rock, and Squaw Grove. All premiums were now cash ranging from 15 cents to \$1. This turn-of-the-century event served dinner for 25 cents.

Fast forward the 21st century—2019: All amateurs—men, women and children—are invited to enter baked goods, canned fruit or vegetables and handicrafts and photos in the Ladies Fair. With six sections, 21 categories and 145 classes, some of the same items are being entered: quilts, sugar cookies and grape jelly. Our premiums/prizes range from \$5 to \$30 with ribbons, auctioned quilts, special awards and a crystal vase. Over \$2,500 in prize money is provided by our very generous sponsors.

Tradition has prevailed over the years with changes introduced by the committee based on annual assessments blended with comments and suggestions from participants. The premium lists provided a history of the Ladies Fair. Here's some highlights across the years beginning with 1973.

- ◆ Thirty ladies have served as committee members since 1973, from two to 16 years. The current committee—Cheryl Lee, Karen Yoder and A. Denise Farrugia—have been together since 2013.
- ◆ 1978—Harley Davis Sweepstakes introduced for the winner of most ribbons in all classes. Winner was determined by a point system.
- ◆ 1984—Special Recipe debuts with a recipe for Sunshine Cake
- ◆ 2007—Transition year with long-serving members retiring after taking the reins from the previous committee members in 1992
- ◆ 2008—Established an electronic mailing list for information; Premium List distributed via email
- ◆ 2009—Premium list expanded with new sponsors, different categories and classes and more opportunities to win ribbons
- ◆ 2011—Entrants with more than 20 items could pre-register to reduce check-in time
- ◆ 2014 and 2019—Premium List reviewed to determine under-performing classes. Classes with an average of less than 12 entries over eight years were eliminated. Categories were combined and criteria established regarding the minimum and maximum number of classes in a category. Introduced a new class in Handiwork-special handicraft in 2014 and in 2019 two new categories: muffins and felted wool.
- ◆ 2016—Expanded marketing beyond website, email list, Big Rock Crier and Hinckley Update and to have a presence on Facebook
- ◆ 2017—First quilt challenge with winning quilts auctioned
- ◆ 2018—Introduced a new class in Handiwork-special coloring page and a Gluten-free category

Our Special Recipe this year honors the Hatfield family. Aunt Myrtle Hatfield's Carrot Cake recipe, from Juanita Hatfield Beck, has been a family favorite for over 75 years. Enjoyed by others at many potluck dinners, the carrot cake was the "go-to recipe". Aunt Myrtle Hatfield was Roger and Juanita's paternal aunt. Roger and his wife Judy have provided many years of service to the Big Rock Plowing Match Association. Roger on the Board and as Board President and Judy on the Ladies Fair Committee. We invite you to gather up the ingredients, follow the recipe and enter; first place receives \$30 and second place \$20. This family favorite may become your "go-to recipe" as well.

Last year's Ladies Fair showcased the work of 78 who entered 512 items. Thirty entrants were from Big Rock with the remaining 48 entrants from 21 Illinois communities plus Alabama and Michigan. Seven men competed. Over 700 people visited the building to view the displays. We invite everyone to enter this year's Ladies Fair in celebration of the 125th Big Rock Plowing Match Festival.



## JUNIOR & LADIES FAIR BAKED GOODS & QUILT AUCTION

SATURDAY

Put this auction at the top of your list. Meet up with long-time friends, make new acquaintances and place your bids. The blue & red ribbon winners are the best from both the Junior and Ladies Fairs. Parents, grandparents and other supporters will have the chance to bid on their favorite baker's entry and take home some amazing treats. Prize-winning baked goods and quilts will be auctioned to the highest bidder on Saturday afternoon starting at 1:00 pm with Junior Fair items followed by the Ladies Fair items at 1:30 pm and the quilts at 2:00 pm. James Dresen returns as our Auctioneer.

- ◆ Over 75 different categories of baked goods and quilts will be auctioned to the highest bidder.
  - These mouth-watering delicious treats include everything from lemon bars to this year's Special Recipe Aunt Myrtle Hatfield's Carrot Cake from Juanita Hatfield Beck
  - Homemade breads, muffins, pies, cobbler, cakes, cookies, cupcakes and candies await a place on your table.
- ◆ The special quilt will feature quilters' interpretation of the Ladies Fair in a mini 24" square quilt.

The 2018 Quilt Challenge showcased the Vegetable & Grain Show. Congratulations to our quilters, Wilma Shimkus—first place and Sheila Juvengo—second place, for their creative interpretation. We thank Linda Voelker for her winning bid.

The auction is a fundraiser for the Association with all proceeds supporting the Plowing Match events, as well as maintaining the buildings and grounds. The auction is a win/win, buyers go home with a tax deduction and the Association receives funds to support their work.

All you need is a bidder's number available that day at the bandstand (12:30-1:00 pm) or you can get one now by contacting Denise at (630) 556-4771 or via email at [bigrockplowingmatch@gmail.com](mailto:bigrockplowingmatch@gmail.com)



## VEGETABLE & GRAIN SHOW

Change is happening with the Vegetable & Grain Show as Donna Kimpan and Nan Long take on the role of Coordinators - welcome ladies. Here's a few of the changes that are in place for 2019.

- ◆ Classes remain the same, number of items in some classes has been adjusted.
- ◆ New this year:
  - Entry form replaces the 3x5 card. Just complete the form and bring with your entries.
  - In partnership with the Ladies Fair, all Vegetable & Grain entries will be accepted at the west end of the Ladies Fair building on Friday from 2:00-7:00.
- ◆ Location and display area will also change a bit. Come visit and see how things look.
- ◆ Silent Auction begins at 9 am on Saturday and will conclude at 1 pm Sunday. Please check the display area for additional details.
  - Remember to place your bids at the silent auction and check back often to keep your bids at the top to take home some great vegetables.

This is a great opportunity to show off your gardening handy work. We look forward to seeing your prized vegetables, fruits and grain entries. Ribbons and cash prizes will be awarded. With three sections, to choose from there is a place for everyone to enter. Remember special awards are given for people with the most blue ribbons in each section.

We would like to send a big Thank You to Dale and Cindy Dean for their years of volunteering to organize the Vegetable and Grain Show. Enjoy retirement!

More information and the Premium List with entry form are at [www.bigrockplowingmatch.com](http://www.bigrockplowingmatch.com).



# ESPECIALLY FOR KIDS

## CHILDREN'S RACES

SATURDAY

Old-fashioned races have been enjoyed by children for many years at the Plowing Match festival. Preschool children and students from kindergarten through eighth grade are invited to participate in the free races to be held in the Cattle Ring at noon. So put down your electronics and join in all the fun.

- ◆ Races for preschool children include Run to Mom/Dad, Bunny Hop and Penny Race.
- ◆ Students Kindergarten and 1st grade will compete in a Crab Walk, Balloon and Penny Race.
- ◆ 2nd and 3rd grade student races include Crab Walk, Balloon Race and 3-Legged Race with ties provided.
- ◆ 4th, 5th and 6th grade students compete in Egg, Balloon and Three-legged Races with ties provided.
- ◆ 7th and 8th grade student races include Egg, 3-Legged Races with ties provide and Balloon Relay.

Prizes include ice cream tickets and cash. Support for this event is provided by the Big Rock Lions Club.



## PETTING ZOO

SATURDAY AND SUNDAY

SPONSORED BY THE BIG ROCK PARK DISTRICT AND  
BIG ROCK PLOWING MATCH ASSOCIATION

Experience the community petting zoo on Saturday from 10 am-5 pm and Sunday from 11 am-4pm. Farm animals, provided by local farmers, will be available for visitors to interact, hands-on, with the animals. FFA and 4-H members will be conducting this fun and educational exhibit.

## PEDAL TRACTOR PULL

SATURDAY

Here's a fun and exciting tractor competition for children. Take the challenge on Saturday at 2:30 to see who can pedal the tractor the farthest. Children are divided into five weight classes: up to 40 lbs., 41-50 lbs., 51-60 lbs., 61-70 lbs., and 71-80 lbs. Registration begins at 2 pm in the Cattle Ring.

Children, astride a pedal tractor, pull a weighted sled as far as possible. As the pedal tractor pulls forward the sled is dragged, creating friction, the weight moves forward and the sled becomes harder to pull. The winner is declared based on the longest measured distance of the pulled sled. The winner in each class receives a trophy and all receive a participation ribbon.

Tips from previous winners:

- ◆ Always look ahead.
- ◆ Go as fast as you can.
- ◆ When it starts getting hard, pedal harder.
- ◆ The faster you get going, the farther you'll go.

Sponsored by the Big Rock Plowing Match Association with great appreciation to Dale Pierson for the loan of the pedal tractor and sled.



## CARNIVAL

Skinner's Amusements returns to Plowman's Park with carnival rides on Friday evening from 5:00-9:00 pm and Saturday afternoon from 1:00-5:00 pm. Friday is Kids' Night and you may purchase wristbands on site for \$20 or individual ride tickets at the Ticket Booth. On Saturday individual ride tickets may be purchased for \$2 each.

## JUNIOR FAIR



"Children's Work" has been a part of the Big Rock Plowing Match since 1897 when classes such as quilting, making a roll jelly cake and a creating a map of Illinois were offered. Classes have expanded over the years with baking, coloring, handicrafts, needlework and sewing noted entry categories in 1973. Entries were a part of the Ladies Fair until 1995, when today's Junior Fair Premium List was created with familiar entry categories such as flower arrangements and photography.

For 2019, entries continue to feature baking, handicrafts and photography for those ages 3 to 14. Special entry

categories for art, craft and baking spotlight the 125th Anniversary. Baking entries placing first or second are sold at auction on Saturday. Here's your chance to get a Plowing Match 125th layer cake!

As always, an entry does not need to be made just for the Junior Fair, it just needs to fit the requirements of the class it is entered in. Also, we are excited to announce that the Premium List has been redesigned to serve as the entry form (no more 3" x 5" cards!).

Over the years, the Junior Fair has grown into its current space in the Junior Fair/School Exhibit building and showcases over 400 entries annually from young people across our communities. Entrants have a chance at just over \$1,200 in awards between regular and special entry placements. We thank our generous sponsors for their ongoing support!

Please review this year's premium; we are sure you will find a class or two to enter! Contact a Junior Fair Coordinator with questions:

- ◆ Donita Bartoszek - 630-556-9000
- ◆ Sarah Magro - 630-335-6205
- ◆ Mary Rogerson - 630-330-0114

## PRAIRIE STATE RAILROAD CLUB: NOT YOUR AVERAGE MODEL RAILROAD

SATURDAY AND SUNDAY

Train enthusiasts gather round. The Prairie State Railroad Club will have their large scale ride-on trains available for visitors to take a ride on the mile long track that winds it way through the northwest section of Plowman's Park. Come aboard at the train stop by the Junior Fair building on Saturday and Sunday.

Club members are referred to as "live steamers" because the earliest ride-on trains were fully operational miniatures of full-size steam locomotives. This group of individuals share a passion for the construction and operation of large-scale ride-on trains. Unlike model railroads, where you watch your train pass through a series of dioramas on a table set-up, ride-on trains allow you to become part of the experience on the train. Their track parallels the BNSF Railway and they boast that there are not many clubs where you can pace full-size trains while operating your own miniature version!

The club came to Plowman's Park in 1990 and began the project of laying 1,000 feet of track before the 1991 plowing match. Working almost every weekend, they were ready and rides went from the Junior Fair building west to go around the horseshoe ring and back. Over the years they have laid over 5,280 feet of track, built a station stop, side tracks, trestle, turntable and an unloading facility with a transfer track, ramp and table to move the locomotives.

New members are welcome. Kids as young as 7 years may join when sponsored by an adult member. Membership meetings are generally held monthly at 2:30 pm on the fourth Sunday in Big Rock. To learn more about the club, please contact a club officer via their website at [prairiestaterr.org](http://prairiestaterr.org).



## SPONSORED BY THE BIG ROCK PARK DISTRICT

### PRINCE AND PRINCESS CONTEST

All boys and girls, ages 3 through 5, living in the area are invited to enter this year's Prince & Princess Contest to be held on Sunday at 1:30 pm at the stage. Entrants should check in at the stage by 1 pm.

Entry forms are available on the Park District website ([bigrockparks.com](http://bigrockparks.com)) and the Plowing Match website, ([bigrockplowingmatch.com](http://bigrockplowingmatch.com)). Deadline for entry forms is September 8. Contact Cindy Nehring at 630-556-3238.



### WATERMELON EATING CONTEST

One slice or two—watermelon that is. The person with the fastest time after eating slices of watermelon will be awarded a cash prize: \$10 for age group 7 - 11 eating one slice, \$20 for age group 12-15 eating two slices and \$30 for age group 16 and up eating two slices So who will have the fastest time in 2019? Find out on Sunday. No entry fee. Registration begins at 11 am at the stage prior to the contest.



### BINGO

Come and enjoy Bingo on Sunday at 2:30 pm under the Pavilion at Plowman's Park. There will be four or more individual games played, prizes will be awarded and there is no charge to play.

## PLOWMAN'S PARK—BUILDING FOR THE FUTURE

We know it as Plowman's Park today, but it was known as W.E. Thomas Grove until the Big Rock Plowing Match Association bought the 19-acre site in 1949/50 for \$4,750 (\$250 an acre). With this purchase the plowing match had a home for the fall competition and festival. By 1951/52 the lunch stand and Ladies Fair building had been built replacing some of the tents previously used to house events. The Junior Fair building was built in the 60's and the restrooms added in 1967. In case you were wondering, the restrooms with indoor plumbing replaced two individual 12' x 16' outhouses.

This year, in partnership with the Big Rock Lions Club, the restrooms have been improved with a new floor surface and plumbing (toilets/urinals). An ADA compliant portable toilet is available by the restroom building. In the Ladies Fair building, one of the oldest, the cracked floor was repaired and coated with a new surface, as well as the installation of additional lighting and ceiling fans. The lunch stand equipment was examined, maintained and is readied for all the events at the park. Monies from the 125th Fundraiser were also utilized on these projects.

- ◆ Big Rock Plowing Match
- ◆ Big Rock Car Show
- ◆ Village 4th of July celebration
- ◆ Youth baseball games
- ◆ Tuff Hedeman Break-out Series Bull Riding
- ◆ Prairie State Railroad Club
- ◆ Community Easter Egg Hunt
- ◆ Church, school, family picnics and weddings

Plowman's Park is host to many community activities throughout the year. This beautiful park is available to rent for family, school, church or community events. Perhaps you have enjoyed an event at the park. To book your event under the oaks contact Bonnie Warchol at (630) 556-3501.

This private park is owned and maintained, without any tax or public funds, by the Big Rock Plowing Match Association.

## CRAFT & ART SHOW

SATURDAY & SUNDAY

As we celebrate the 125th Plowing Match anniversary this year, we looked back in time for the Craft, Art, Antique and Vendor Show. Though we cannot pinpoint a specific date/year this show began, or when it was possibly a one-day event turned two-day event, in speaking with folks and reviewing issues of Plowing Match Times, we found it has been part of the overall event for quite some time. There have been many coordinators over the years; Dawn Stegall [current 5 years], Jeanne Jackson [18 years], Donna Leffelman, Deb Ruh and more, including Roger Hatfield. In the 70's Roger advised that folks who wanted a space, arrived on the day of the show, paid him for their space to set up their wares. Today, we do require applications in advance of the show, along with photographs of the display set-up and craft/art/product offerings to ensure an outstanding show.

In addition, over the years folks have simply set-up tables, put-up their own tents/canopies or for many years the Association provided a large tent in addition to those who set up their own. As crafts, art and vendors have changed throughout the years we have changed along with them. Today, participants provide all of their own set up materials to make their space unique and special.



Folks love to stroll among the many canopies located throughout the park, to find those wonderful gifts or unique items to add to personal collections. Many vendors are located between the Ladies and Junior Fair buildings, along with others around the gravel pathways in the center of the park. Look for your favorite returning, discover new crafters, business and collectibles vendors, as well as supporting the local non-profit groups and businesses. The event remains an outdoor, rain or shine part of the Big Rock Plowing Match fall festival.

If you'd like to add your unique handmade art, craft or vendor items to the show, applications for 2020 will be available next year at [bigrockplowingmatch.com](http://bigrockplowingmatch.com).

Congratulations to our 2018 ribbon and drawing winners!

### Artisan, Crafter Ribbon Winners

- ◆ 1st place: Jeanne Jackson, handmade jewelry
- ◆ 2nd place: Nick Eckmayer, handmade pottery
- ◆ 3rd place: Cherrie Jolliff, handmade leaf castings, stones, glass flowers

### Vendor Ribbon Winners

- ◆ 1st place: Carol Zeek/Pink Zebra, soy-based sprinkles for candle warmers
- ◆ 2nd place: Deb Krahn/Life Expression Décor, vinyl stencils on wood
- ◆ 3rd place: Bob Coffey/Windy City Mustard, gourmet mustard and spice blends



### Drawing Winners

- ◆ \$40: Blanca Aranda/Real Time Pain Relief; lotions, creams, skin care products
- ◆ \$10: Elizabeth Koenig, Natural goat milk soap
- ◆ \$5: Debbie Nelson/Trades of Hope; jewelry, scarves, handbags, home décor



## ROUND BALE ROLL

SATURDAY

Are you ready for a “Roll ON the Straw”? Come and compete at the Round Bale Roll-Off on Saturday at 4:00 PM in the Cattle Ring. This old-fashioned competition tests the strength and skill of three team members competing against time to roll a round bale of straw across the ring. Of course, there is a hitch! Two people roll the bale and the other teammate dares to stay on top of the bale as it rolls. If the person on top falls off, the bale must stop and that person must get back on top before they can start roll the bale again. The team with the best time wins.



There are two divisions: ages 13-18 and ages 19 plus. No cleats or spikes allowed. Registration begins at 3:30 PM with the contest beginning at 4:00 pm. Registration fee is \$15 per team. Started in 1994 at the Centennial Plowing Match by Gene & Cindy Nehring, this fun competition always brings a lot of laughs and entertainment to the Plowing Match.

So, if you are at least 13 years old, show up to roll the straw and win lots of great prizes from local businesses: Deer Valley Golf Course, Indian Oaks Golf Course, Brian's Pizza, Pizza Hut, Classic Cinema, Hill's Country Store, Jewel Foods and Napa Auto Parts.

First place winning teams in each division take home \$150. New this year is prize money of \$75 for teams taking second place. Funding is provided by the Baie Family. Thank you to all our sponsors and also to the Byington Family for supplying the round bales. For more information contact Lynne Paver at 630-400-6592.



## BAGS TOURNAMENT

SUNDAY

It was a great success in 2018, so we are thrilled for the return of the Big Rock Plowing Match Bags Tournament on Sunday from 1:00-4:00 pm. Open to adults, 21 and older, this tournament with great cash prize winnings is sure to bring return and new players, so register early to guarantee your spot. Here's the game plan.



- ◆ Blind draw for partners at 1:00 pm.
- ◆ Double elimination tourney.
- ◆ Entry fee is \$20 per person.
- ◆ Register by Monday, September 9 for available spots.
- ◆ Application form at [www.bigrockplowingmatch.com](http://www.bigrockplowingmatch.com).
- ◆ Find us on the edge of the park in the area north of the Ladies and Junior Fair buildings.
- ◆ Registration for spots, if available, will open before tournament.

### Prize winnings

- ◆ 1st Place Team \$500
- ◆ 2nd Place Team \$250
- ◆ 3rd Place Team \$125

Our sincere gratitude to the tournament co-sponsors: Dairy Joy and Pessina Tree Service.

Contact Steve Ruh at 630-461-9879 or [steve@ruhfarms.com](mailto:steve@ruhfarms.com) with questions.

## TRACTOR TROT

SUNDAY 8 AM START



A 5k fun run has been part of Plowing Match weekend since 1988 when 154 participants, 77% from Big Rock, walked or ran west on Hinckley road reversing at the half-way point returning to Plowman's Park.

Over the years there have been various coordinators, but the route has remained the same. It was 2010 when the run became the Tractor Trot. So experience the quaintness of Big Rock and feel its crisp country air as you run, walk or trot in this year's event.

Coordinated by the Big Rock Fire Department since 2018, runners of all ages and abilities are invited to participate on Sunday. It all begins outside the entrance to Plowman's Park. Arrive early, especially if you will be registering on site that morning, as the run begins at 8:00 am. Registration fee is \$20. Registrations received by September 5 will include an event t-shirt. Find the form at [www.bigrockplowingmatch.com](http://www.bigrockplowingmatch.com).



## OLDE TIME BASEBALL

FRIDAY

Kenny Field will once again be the site for an Olde Time Baseball game. Coordinated by the Big Rock Park District, all players 16 years and older are invited to participate and make their own memories in this years game at 7:00 pm on Friday. Bring your own equipment and gather at the field at 6:30 pm. Fans of all ages are welcomed to fill the stands and cheer on the teams.



## CATTLE SHOW

SUNDAY

The Plowing Match will again hold their Cattle Show on Sunday at 1:00 pm in the show ring. Local 4-H members will be bringing their steers and heifers to the show to compete, and possibly sell their animals. They have worked very hard for the last 9-10 months to raise the best possible animal for sale and are eager to show you their accomplishments. Judging is based on form, market readiness and cover with awards presented for breeds.

Congratulations to the 2018 show winners:

- ◆ Riley Johnson, Grand Champion Overall
- ◆ Payton Hueber, Reserve Champion Overall

The Beef Auction will be at 3:00 pm. If you are seeking top quality freezer beef or would just like to help a 4-H member, please consider bidding on these animals. A huge thank you to our buyers in 2018. We hope to see you again this year.

- ◆ O'Donnell Excavating & Trucking
- ◆ DeKane Equipment Corporation
- ◆ Lenny Bryson Auctioneer
- ◆ Willrett Seed & Prestegaard Auctioneering



The Lakone Company

**CONSERV FS**  
**GLENN FUCHS**  
 Petroleum Sales  
 Office: 815.756.2739 Cell: 630.417.6970  
 E-mail: gfuchs@conservfs.com  
 Website: www.conservfs.com  
 20048 Webster Rd. · DeKalb, IL 60115

**Flint's**  
**Family Farm Meats & Market**  
 beef • pork • lamb • chicken  
 eggs • honey & more  
 livestock feed • hay • straw  
 bedding & firewood  
 www.FamilyFarmMeatsLLC.com



**FITZGERALD'S**  
**ELECTRICAL CONTRACTING INC.**  
 Commercial, Industrial, Residential  
 Aerial & Site Work  
 Licensed, Bonded & Insured  
 (630) 556-3000 Phone 6S865 Shaw Road  
 (630) 556-3087 Fax Big Rock, IL 60511

**RAYVAC**  
 PLASTIC DECORATORS, INC.  
 ROBERT J. RAYMOND  
 47W171 Route 30 T: 630-556-3888  
 Big Rock, Illinois 60511-9304 F: 630-556-3893  
 www.rayvac.com e-mail: bobjr@rayvac.com

BMC INSURANCE AGENCY  
 815-826-3273  
 WWW.BMC-INSURANCE.COM

**DeKane Equipment Corporation**  
 47W619 US Highway 30  
 Big Rock, IL 60511  
 Office (630) 556-3271  
 Cell (630) 918-7827  
 rruh@dekane.com  
**KUBOTA**  
**VERSATILE**  
**STIHL**  
**GEHL**  
**SCAG**  
 POWER EQUIPMENT  
**Cub Cadet**  
 Russell S. Ruh  
 Sales Manager

## KEEPING IN TRADITION WITH OLD-FASHIONED DINNERS

SATURDAY AND SUNDAY

Serving delicious old-fashioned dinners at the Plowing Match has a very long history beginning with the ladies of the church preparing and serving the meals after the plowing on Saturday and Sunday for many, many years. In the 1997 edition of *Plowing Match Times*, Mary Dalton wrote of the years when "one person from each neighborhood would call or go door-to-door to get donations to offset the cost of the meals which were priced at \$6 or \$7.50. Additionally we asked that each family bake two pies for either Saturday or Sunday to be served as desserts. I remember one year when Karen Papenberg and I helped bake over 100 pies!"

Over the years the weekend meals have been prepared by Fay's Pork Chop Bar-B-Que, Michael's Roast Beef, Nel's Catering, Reuland's Catering and 5B's, and always served by ladies from the community. The tradition of old-fashioned dinners continues with 5 B's Catering of Waterman serving up everyone's favorite chicken, pork chops or roast beef at the Plowing Match.

Saturday's menu offers plates at \$13 with a choice of 2 pork chops, half chicken or a combo plate (1 chop and ¼ chicken) served with baked beans, coleslaw and applesauce. Dinner will be served from 11:30 am to 2:00 pm.

A roast beef dinner will be served from 11:00 am to 1:30 pm on Sunday. Dinners are \$13 per plate and include roast beef, cheesy au-gratin potatoes, buttered green beans, coleslaw and roll with butter.



It's that time of year again when our community gets together for some fall fun and The Lions Club of Big Rock is proud to be an active part of all the festivities planned!

As always, the Club will be sponsoring "Cow Chip Bingo". If you are not familiar with the game, the rules are easy. Just purchase a square from one of the Lions Club Members in advance or at Plowman's Park on Saturday or Sunday and the cow does the rest. The squares cost either \$2 or \$5 depending on the signup sheet you choose. If you want to witness the cow "in action" she will be located just outside the cattle arena on the east side of Plowman's Park.

The Lions Club is involved with the community and schools in many ways too. But they can't accomplish any of the projects they do throughout the year without your generous help and support. We are fortunate to have such an active club in Big Rock.

This year the Lions helped keep Plowman's Park operational by assisting in the renovation of the bathrooms. They also assisted at the successful 5th Annual Car Show with their strawberry shortcakes for the attendees. All donations were greatly accepted to enable the Lions to provide assistance in the community where needed.

The Club is always looking for new members to help them in their efforts. If you can contribute some of your valuable time to their many community causes, contact President, Jack Bartoszek jbartoszek@ameritech.net

Meetings are held the first Thursday of each month at the Big Rock Township hall at 7:00 pm. More information available at the Lions Club booth near the cattle corral on the east side of Plowman's Park.

## SPECIAL THANKS FROM THE BIG ROCK PLOWING MATCH BOARD

The Plowing Match Association Board expresses their sincere gratitude to all the individuals, businesses and companies that have provided expertise and services in support of The Plowing Match and Plowman's Park.

- ◆ George Alexander and his Clydesdale horses for providing an elevated view for people to enjoy the plowing competition.
- ◆ Allegra Naperville for printing the Premium Lists, posters and sponsor banners.
- ◆ Aurora Area Convention & Visitors Bureau for promotion of the Plowing Match.
- ◆ Bickford Electric for tending to all our electrical needs, especially the Ladies Fair building this year.
- ◆ Big Rock Boy Scout Troop 19 for helping with garbage pickup throughout the weekend.
- ◆ Big Rock Historical Society for allowing parking on their property and providing rides between the plowing competition and Plowmen's Park.
- ◆ Big Rock Lions Club for their financial and in-kind assistance with improving the restrooms.
- ◆ Big Rock Park District for continuing the Prince & Princess and watermelon eating contests, sponsoring BINGO, as well as maintaining Kenny Field.
- ◆ Marvel Davis for the use of the land for the plowing competition.
- ◆ DeKane Equipment Corporation for equipment assistance in maintaining Plowman's Park.
- ◆ English Congregational Church for the use of Fellowship Hall for Board meetings.
- ◆ Hinckley Big Rock Middle School 8th grade students for cleanup help on the Monday after Plowing Match weekend.
- ◆ J & L Stables, Jeff & Donna Heiser, for the use of their tractor at Plowman's Park throughout the year.
- ◆ Klotz Family for maintaining the plowing field.
- ◆ KZ Photography for taking photos of the events at the Plowing Match.
- ◆ Label Tek, Inc. for printing and underwriting the cost of the 2019 Big Rock Plowing Match Times.
- ◆ Lyrka Lawler for the graphic design and layout of the *Big Rock Plowing Match Times* and her role as webmaster for the Plowing Match website.
- ◆ Mike Long for allowing parking on his property.
- ◆ Sandy Marshall for creating the prize money tally cards for the Junior & Ladies Fair, as well as the Vegetable & Grain Show.
- ◆ O'Donnell Excavating & Trucking for their continued support in maintaining Plowman's Park.
- ◆ Dale Pierson for the loan of the pedal tractor and sled for the Children's Pedal Tractor Pull.
- ◆ Prairie State Railroad Club for offering rides to train enthusiasts during the Plowing Match.
- ◆ Sign FX for printing and updating Plowing Match signs.
- ◆ We also thank all the contributors to the 125th Fundraiser. Please see separate article on page 4.

The Plowing Match Board appreciates everyone's assistance in keeping these private grounds beautiful. We are very proud to be part of the Big Rock community.



## THE BIG ROCK PLOWING MATCH ASSOCIATION GRATEFULLY ACKNOWLEDGES THE SPONSORS OF THE 125<sup>TH</sup> BIG ROCK PLOWING MATCH

- \$1,000+**  
Dairy Joy Drive-In  
Kane County Farm Bureau  
Label Tek, Inc.
- \$700+**  
Big Rock Park District
- \$600+**  
The LaKone Company  
The Rich Family
- \$500+**  
Erika & David Simono  
Pessina Tree Service
- \$300+**  
Big Rock Lions Club  
Big Rock Township  
Lynda Brummett Memorial  
Fitzgerald's Electrical Contracting, Inc.  
Healy Chapel  
Hintzsche Family, Big Rock  
Scott & Son Cattle, Inc.
- \$200+**  
Bickford Electric  
Les & Pat Heerd  
Hollemeak Construction, Inc.  
J & L Stable  
Joanne Leifheit  
Nelson Funeral Homes  
Ray Vac Plastic Decorators, Inc.  
Harry Schoger & Sons, Inc.  
Schollmeyer Landscaping, Inc.
- \$100+**  
Ruth Brigel  
Burgess Tractor Service  
Rhett & Becky Byington  
Jeff & Sandy Carr  
DeKane Equipment Corp.  
Tom & Ellie Elder  
Ed Evans  
Executive Affiliates, Inc.  
Gum Trucking  
Hill Country Store  
Kimpan Family  
Needham Shop  
Ken & Carol Rojek  
Shala Farms – The Paver Family  
Terry & Sherry Sorensen  
Welch Creek Farms – The McKenzie Family
- Supporters**  
BMC Insurance Agency  
Big Rock Bunco Buddies  
Big Rock Euchre Club  
Loren Davis Memorial  
Central Machinery Movers, Inc.

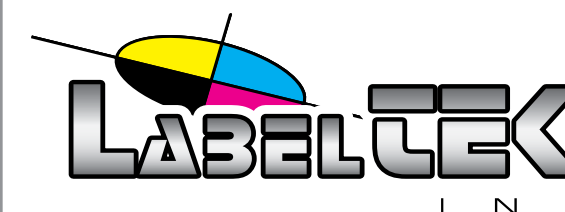
- Conserv FS, Inc. – Glenn Fuchs  
Jane Davis Gapinske & Judy Davis Blincoe  
Luther & Blythe Graver  
Griswold Auctioneering  
Duane & Denise Groch  
Pam Harvey  
James Kidd Family  
Kline Wedeen Family  
Darrin Lee Family  
Jim & Norma Leifheit  
Earl Marshall Family  
Niles Excavating  
Process Dynamics Company  
Queen Vistine  
David & Donna Richardson  
John & Mary Rogerson  
Leon J. Straus Memorial  
Sunset Knoll Riding Academy  
Thomas Craig in memory of V.B. Thomas  
GW Thomas Family – Host of First Plowing Match  
William Yoder Family

*All donations are greatly appreciated and will lead to the continued success of the Plowing Match and the work of the Association.*

*Thank you so much.*

*Big Rock Plowing Match Association*

*Sponsors as of August 23, 2019. If you notice any omissions or inaccuracies, please bring them to our attention by contacting Denise at 630-556-4771 or bigrockplowingmatch@gmail.com*



**PROUDLY  
SPONSORING  
&  
SUPPORTING  
THE  
BIG ROCK  
PLOWING MATCH**

**Dean & Kimberly Hummell**

**[www.labeltekinc.com](http://www.labeltekinc.com)**



FREE ADMISSION  
FREE PARKING

[www.bigrockplowingmatch.com](http://www.bigrockplowingmatch.com)



ECRWSS

POSTAL CUSTOMER  
BIG ROCK, IL 60511

