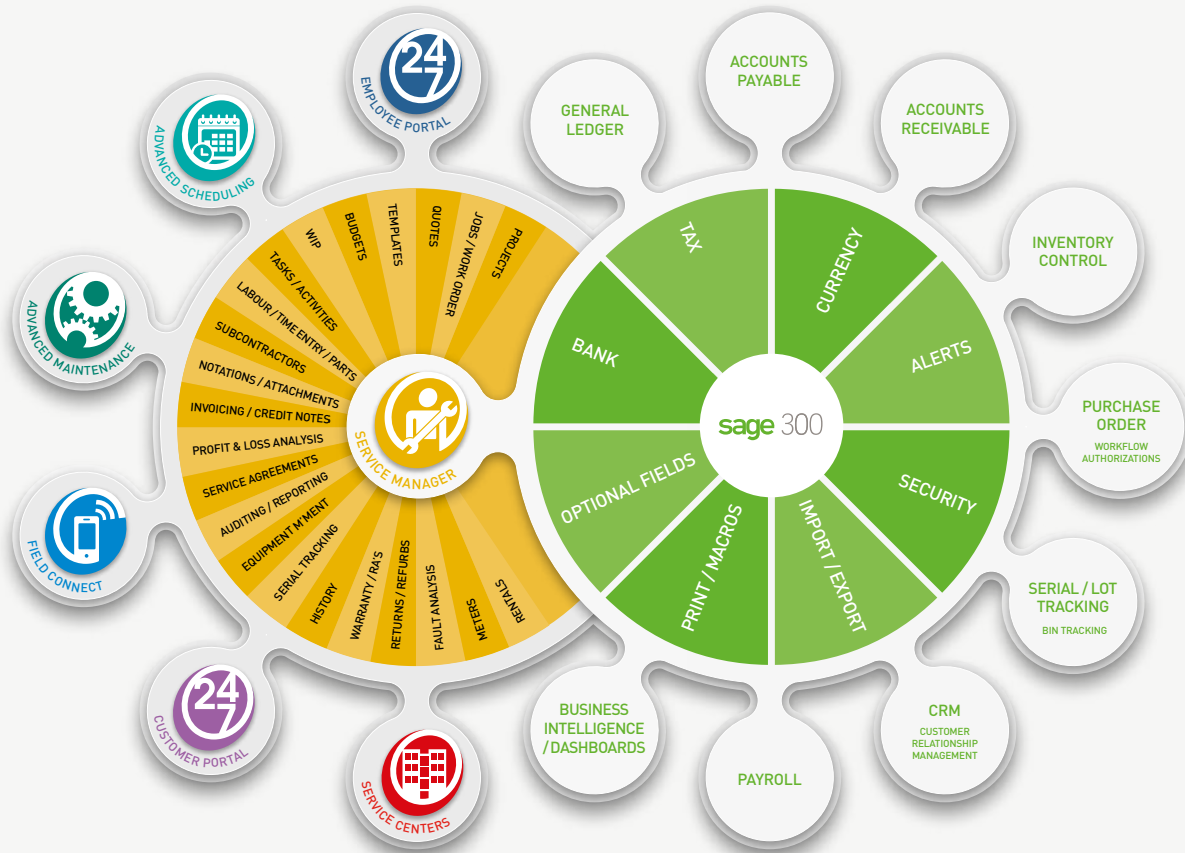




# SERVICE MANAGER

SERVICE, MAINTENANCE & JOB COSTING SOFTWARE FOR SAGE 300



**SERVICE MANAGER** is a multi-award winning software solution specializing in servicing, job cost and equipment management including preventative maintenance, scheduling and mobile field services.

**SERVICE MANAGER IS ANOTHER INTEGRATED MODULE IN THE SAGE 300 SUITE OF SOFTWARE.**

Businesses looking to reduce administrative costs, greatly improve service, increase profits and attain a 360 degree view of their employees and customers should look no further than Service Manager.

**SO WHAT'S NEW?**

Field Connect and Advanced Scheduling provide immediate two way access and communication with service personnel in the field allowing them to receive alerts, record time, use parts/inventory, obtain sign off, issue invoices, take payments, print reports, write notes, upload/download files, map directions and manage time entries all from the convenience of their phone or tablet.

[Support for iOS, Android, Windows - Online or Offline]

**SOME KEY FEATURES OF SERVICE MANAGER INCLUDE:**

- Manage job costing, preventative maintenance, resource scheduling, field service and general equipment servicing
- Equipment history, transfers, warranty, rental, serial and lot tracking
- Standard and WIP accounting
- Profit analysis
- General, recurring and consolidated invoicing
- Fully scalable (Employee and Service Center)
- Issue parts, services, travel, and contractor services
- Time entry, labor tracking, and resource utilization
- Billable and non-billable time
- Tasks and activity checklists
- PO's, requisitions, authorization workflow
- Returns, refurbishments, rotations
- Service, meter and warranty agreements
- Multi-currency
- Service Centers with separate document numbering and GL account segment overrides
- Employee and Customer Portals...



Contact your Sage 300 Solution Provider for further information.  
Contact details below for up-to-date information on Technisoft products.

W [www.technisoft.com](http://www.technisoft.com) | E [technisoft@technisoft.com.au](mailto:technisoft@technisoft.com.au) | T +617 5554 5844 | F +617 5554 5522



Development Partner  
Endorsed