

VISUALIZE EVERY BYTE OF YOUR **sage** 300 ERP DATA IN REAL-TIME



- 01** **PRE-BUILT**
 50+ ERP Integrations
- 02** **100+**
 Fully Functional Pre-built Dashboards
- 03** **BUILT-IN**
 Automated Data Warehouse
- 04** **INSTANT ROI**
 on your Investment

GO LIVE on **DAY ONE**

INTEGRATE ALL YOUR DATA INTO ONE PLATFORM

BI AND ANALYTICS FOR **sage** 300

Running an efficient and profitable business requires you to stay agile and respond quickly to fast changing conditions. This means having quick answers to key questions such as:

- ▶ Are we on track to meet our sales target for this month?
- ▶ Do we have enough inventory to meet open orders?
- ▶ Is our delivery performance meeting customer expectations?
- ▶ Which are our fast-moving and slow-moving items?
- ▶ What are our outstanding payables and receivables?
- ▶ What are our gross and net profit margins across products?
- ▶ How do we improve our order to cash cycle time?
- ▶ And many more such questions

The data is all there in your Sage 300 ERP System. However, the information you need is often slow to arrive and difficult to interpret due to the manual nature of reporting processes. What good is an inventory report if it is days old and doesn't provide insights into current stock levels.

Visualize Every Byte of Your Sage 300 Data in Real-Time

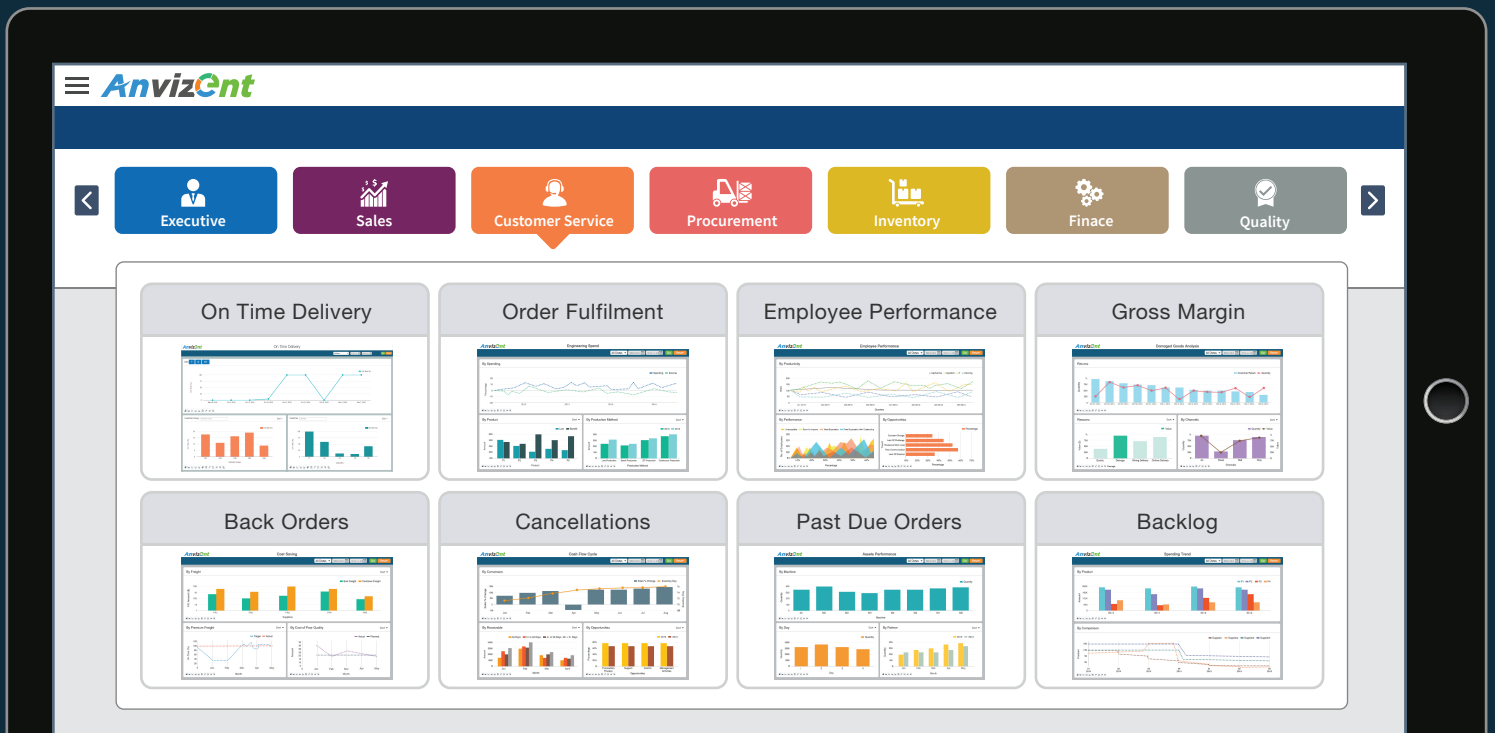
Imagine if you could get a 360 degree, real-time view of your entire business operations. If you could get at-a-glance status of cash flows, sales performance, purchase orders, and inventory positions across multiple locations. And if you could instantly drill down and analyze data at a granular level to uncover hidden issues and opportunities.

Anvizent is a fully integrated end-to-end data management and analytics solution that provides real-time, self-service analytics without the hassle of manual programming and data preparation. Anvizent integrates your Sage 300 data and other enterprise data into one platform. Leverage 100+ fully functional pre-built dashboards to gain a single, unified view of business performance. Track and analyze your entire operations to spot trends and uncover hidden issues and opportunities. Get proactive alerts and collaborate instantly with colleagues to keep operations running at their peak.

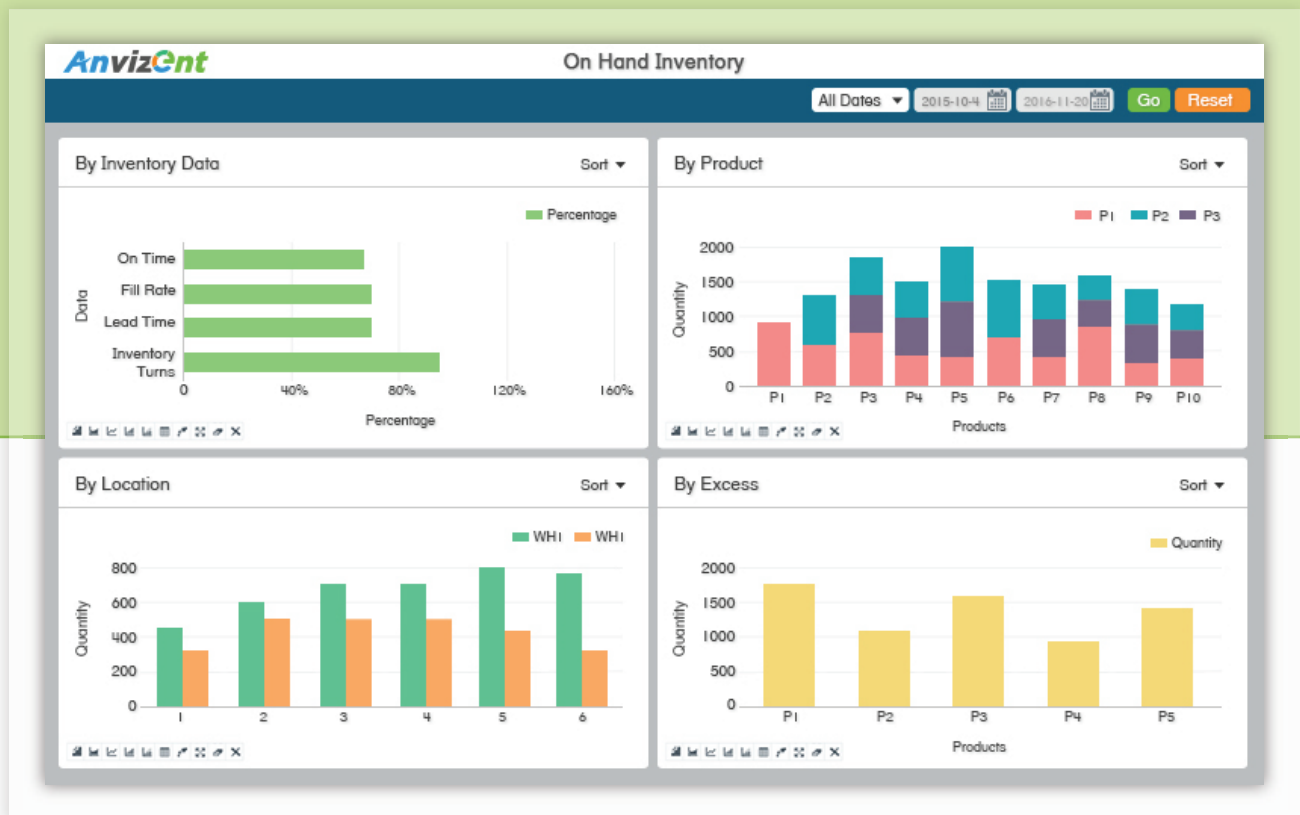


It's time to harness the full value of your SAGE 300 ERP data by accessing rich, real-time insights.

100+ FULLY FUNCTIONAL PRE-BUILT DASHBOARDS



Eliminate lengthy, manual reporting cycles. Get one-click access to 100+ fully functional industry standard dashboards with the metrics that matter the most to you. Quickly see the big picture and drill down to get fast answers to all your business questions.




ALL YOUR DATA AT YOUR FINGERTIPS


Gain unprecedented visibility and real-time control of your operations. Track all your KPIs on-demand, get alerts to issues and collaborate instantly with colleagues to keep your operations running at their peak. You can Go Live on Day One with 100+ fully functional pre-built dashboards. A few of these are listed below:

Executive 

- Shipments
- Bookings
- Backlog
- Cash Flow
- Purchasing Spend
- Engineering Backlog
- Profitability
- Inventory
- Headcount

Sales 


- Shipments
- Bookings
- Growth
- Opportunities
- Leads
- Quotes
- Attempts
- Contacts
- Conversations

Customer Service 


- Quality
- Service
- First Response Time
- Order Accuracy
- Order Entry Rate
- Delivery Performance
- Fulfillment
- Returns
- Lead Time

Procurement 


- Cost Savings
- Quality
- Delivery
- Cost Avoidance
- Implemented Cost Reduction Savings
- Procurement Cycle Time
- Procurement ROI
- Contract Compliance

Inventory 


- On Time Shipping
- Order Fulfillment Accuracy
- Cycle Counts
- Stock Outs
- Warehouse Capacity
- Dock to Load Time
- Inventory Turns
- Inventory to Sales Ratio
- Obsolescence

Warehouse 


- Order Fulfillment Accuracy
- Cycle Counts
- Inventory Data Accuracy
- Dock to Stock Time
- On Time Shipping
- Picking Accuracy
- Inventory Turns
- Warehouse Capacity
- Dock to Load Time

Quality 

- Customer Returns
- Cpk
- First Pass Yield
- Supplier Chargebacks
- Customer Complaints
- Cost of Quality
- Warranty to Sales Ratio
- Scrap Rate
- Supplier Defect Rate

Finance 

- Standard Cost
- Return on Assets
- Return on Equity
- Net Profit Margin
- Inventory
- Cash Flow
- Gross Margin
- Operating Margin
- EBITDA

Logistics 

- Cost per Unit Shipped
- On Time Pickup
- On Time Delivery
- Damaged Freight
- Outbound Freight Cost to Sales Ratio
- Inbound Freight Cost to Sales Ratio
- Transit Time

REVOLUTIONIZING ANALYTICS

Take control of your business like never before! Make well informed decisions with graphic information that is accurate, rich, real-time and in the palm of your hand. Self-service insights from all your data – ERP data, CRM data, MES data or any other data. No programming, no manual data preparation, no waiting for reports and dashboards.



Pre-Built Integrations

Access Data On-Demand

- Explore all your data instantly
- Make decisions faster and with greater confidence
- Minimize burden on IT teams

Integrated View of Business Performance

Built-In Automated Data Warehouse



- Integrate and consolidate data from disparate sources – No Manual Data Preparation
- Analyze data across multiple business units, currencies etc.
- Analyze current and historical data



True Self-Service Visualization

Faster Deeper Insights

- Create new dashboards in just 3 clicks
- Get instant answers to ad hoc business questions
- Drill down to discover hidden opportunities and risks

Analyze Operations in Real-Time

100+ Pre-built Dashboards



- Get continuous visibility into your entire operations: from sales to shipments
- Track progress, spot trends, isolate issues and drive immediate improvements
- Stay on top of business performance from anywhere, at any time, on any device



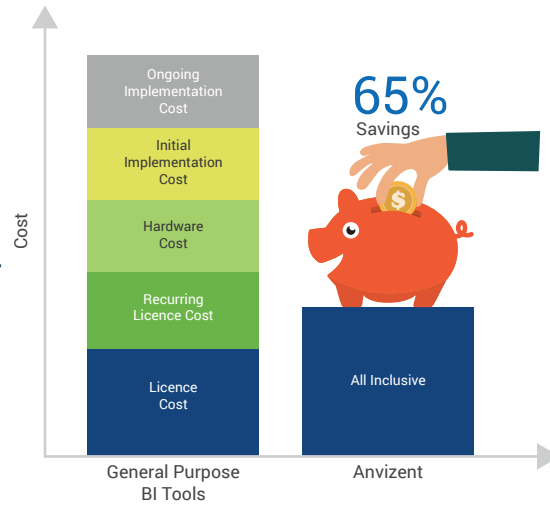
Alerts and Collaboration

Shift From Reactive to Proactive

- React faster to critical issues and opportunities with real-time alerts
- Make timely and informed decisions by collaborating instantly with colleagues
- Improve overall agility and productivity

A FULLY INTEGRATED **END-TO-END** ANALYTICS SOLUTION

A FULLY INTEGRATED
END-TO-END
ANALYTICS SOLUTION AT
THE LOWEST TOTAL COST
OF OWNERSHIP (TCO)



* The above calculations are as per Gartner's three-year BI platform ownership cost for midsize enterprises

	Anvizent	Others
All Your Data in One Platform	✓	✗
Pre-Built ERP Integration	✓	✗
Built-In Automated Data Warehouse	✓	✗
100+ Pre-Built Manufacturing Specific KPIs and Dashboards	✓	✗
ZERO CAPEX	✓	✗
End to End Analytics Solution	✓	✗
Patent Pending Technology	✓	✗
GO LIVE on DAY ONE with No Setup Cost	✓	✗

EVALUATE ON YOUR ENTIRE DATA

We will implement Anvizent overnight on your entire Data at zero cost to you.

TEST ► DRIVE for 30 days. Pay for it only if you like it.



Connect and Analyze
your current and
historical data



Build correlation among
various business attributes
with our Automated Data
Warehouse



100+ Pre-built
Dashboards

About Anvizent

Anvizent is the result of 20 years of data warehousing and data management expertise implementing various data warehouses at several companies around the globe.

Anvizent is the Purpose-Built Manufacturing Analytics Solution. Anvizent integrates your entire data including ERP Data, CRM Data, Shop Floor Data and any other data into one platform. Anvizent is a fully integrated end-to-end solution that comes with 50+ ERP Integrations, Built-In Automated Data Warehouse and Self-Service Visualization with 100+ Pre-Built, Fully Functional Manufacturing Specific Dashboards.

Anvizent can be deployed overnight at the lowest Total Cost of Ownership (TCO). This ensures instant value and a faster Return on Investment (ROI) than any other solution in the market.

USA +1 844 220 8564 | Germany +49 6925 7367 440 | UK +44 203 478 5606