

SCENIC DESIGNER  
**Harry Northcott Mullin**  
 (412) 334-6584  
 hnmullin@syr.edu

**THIS DRAWING CONTAINS VISUAL CONCEPTS AND CONSTRUCTION SUGGESTIONS ONLY.**

The Designer is unqualified to determine the structural or electrical appropriateness of this design, and will not assume responsibility for improper engineering, construction, handling, or use. All materials and construction must comply with the most stringent applicable Federal and Local Fire, Safety, Energy, and Environmental Codes.

VERSIONS

- A** HNM 25/09/2025 First Draft
- B** HNM 19/10/2025 Plan with Dims
- C** HNM 20/10/2025 Details + Paints
- D** HNM 25/11/2025 Shop Finals

CONTENTS

1. Ground Plan
2. Section
3. Deck
4. Front Elevation
5. Paints
6. Locker Carts

**DRAWN BY**  
 HNM

**SCALE**  
 1/2" = 1'-0"

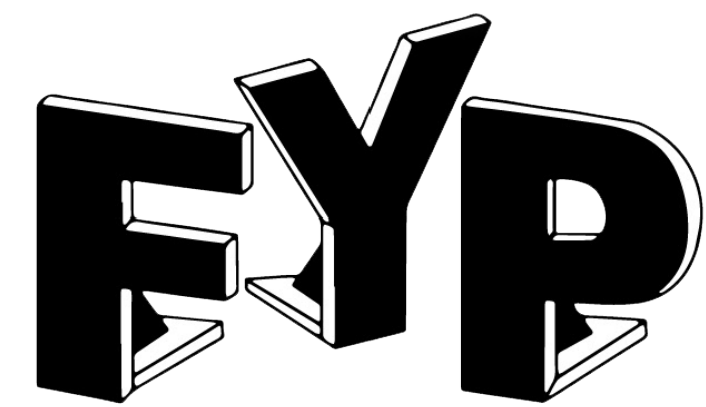
**VERSION**  
 D

**DATE**  
 25/11/2025

SHEET

Ground Plan

1 of 6



**HEATHERS**  
*The Musical*

SCENIC DESIGNER

Harry Northcott Mullin  
(412) 334-6584  
hnmullin@syr.edu

THIS DRAWING CONTAINS VISUAL  
CONCEPTS AND CONSTRUCTION  
SUGGESTIONS ONLY.

The Designer is unqualified to determine the structural or electrical appropriateness of this design, and will not assume responsibility for improper engineering, construction, handling, or use. All materials and construction must comply with the most stringent applicable Federal and Local Fire, Safety, Energy, and Environmental Codes.

VERSIONS

- A <sup>HNM</sup><sub>25/09/2025</sub> First Draft
- B <sup>HNM</sup><sub>19/10/2025</sub> Plan with Dims
- C <sup>HNM</sup><sub>20/10/2025</sub> Details + Paints
- D <sup>HNM</sup><sub>25/11/2025</sub> Shop Finals

CONTENTS

- 1. Ground Plan
- 2. Section
- 3. Deck
- 4. Front Elevation
- 5. Paints
- 6. Locker Carts

DRAWN BY

HNM

SCALE

1" = 1'-0"

Side from SR

VERSION

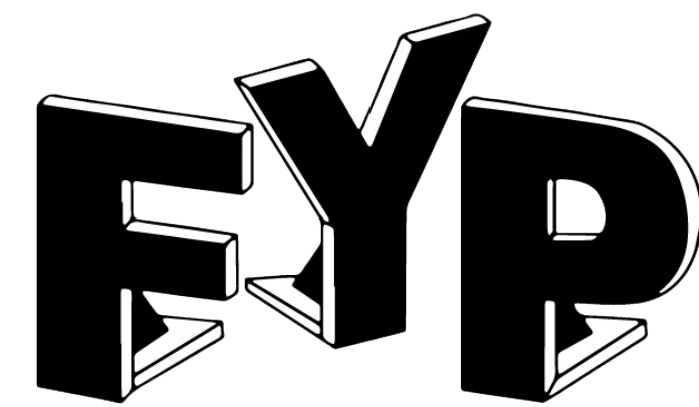
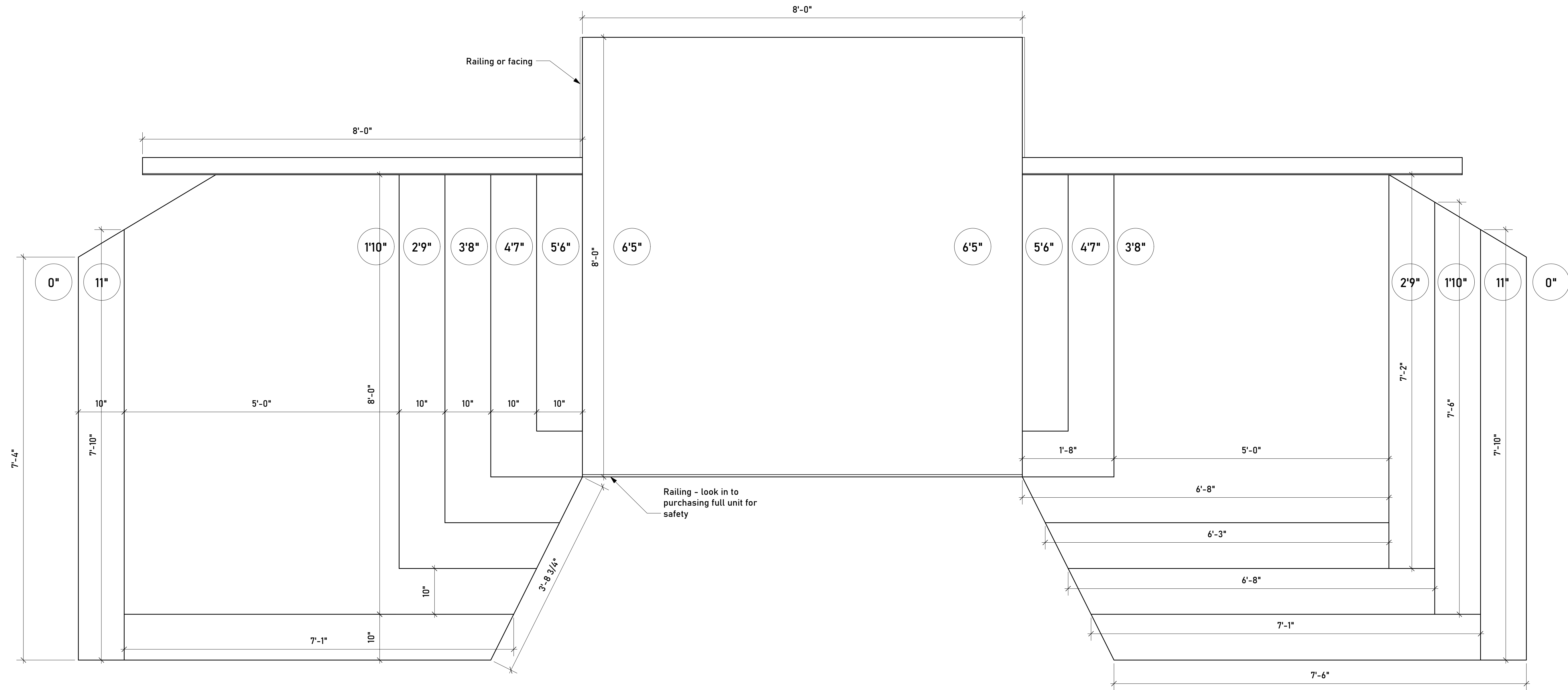
D

DATE

25/11/2025

SHEET

2 of 6



SCENIC DESIGNER  
**Harry Northcott Mullin**  
 (412) 334-6584  
 hnmullin@syr.edu

**THIS DRAWING CONTAINS VISUAL CONCEPTS AND CONSTRUCTION SUGGESTIONS ONLY.**  
 The Designer is unqualified to determine the structural or electrical appropriateness of this design, and will not assume responsibility for improper engineering, construction, handling, or use. All materials and construction must comply with the most stringent applicable Federal and Local Fire, Safety, Energy, and Environmental Codes.

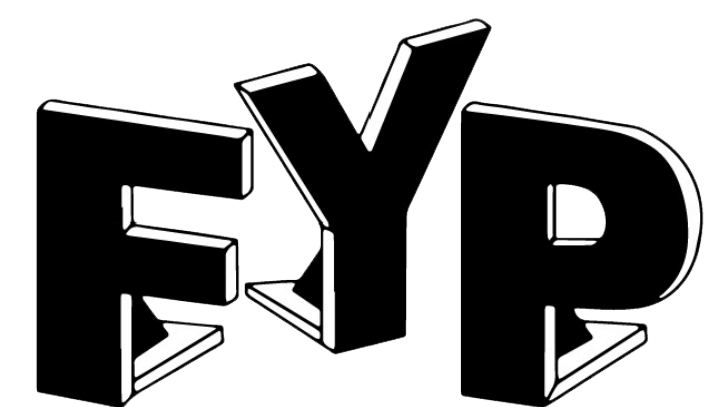
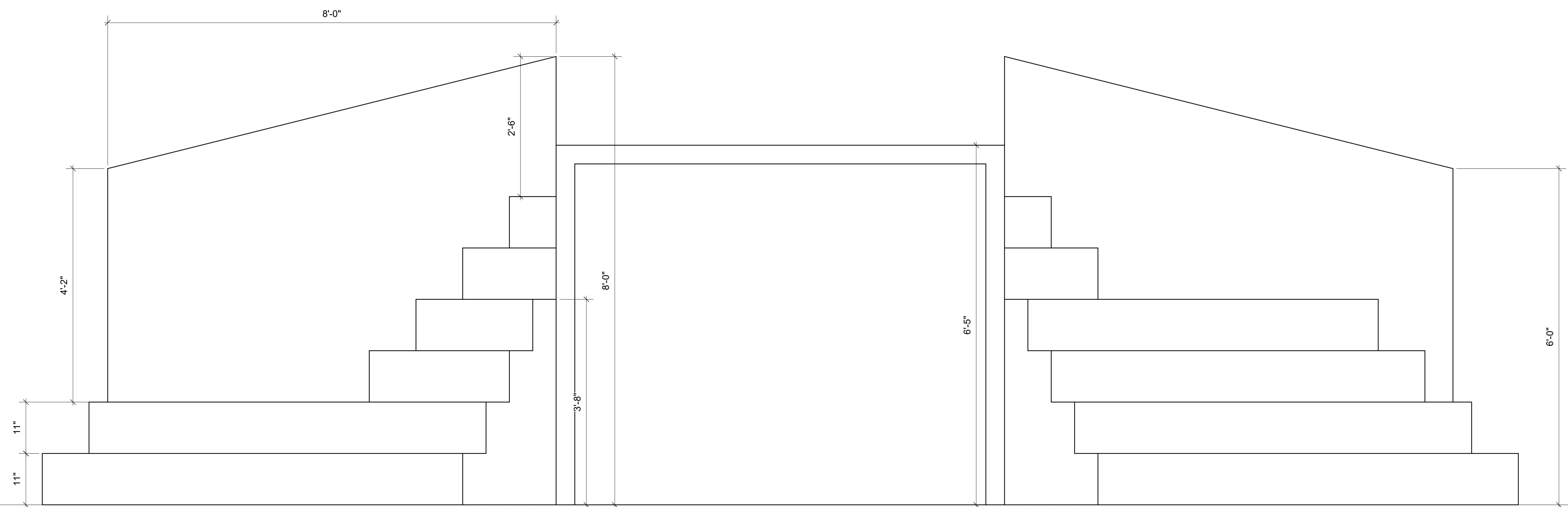
VERSIONS  
**A** HNM 25/09/2025 First Draft  
**B** HNM 19/10/2025 Plan with Dims  
**C** HNM 20/10/2025 Details + Paints  
**D** HNM 25/11/2025 Shop Finals

CONTENTS  
 1. Ground Plan  
 2. Section  
 3. Deck  
 4. Front Elevation  
 5. Paints  
 6. Locker Carts

DRAWN BY  
 HNM  
 VERSION  
 D

SCALE  
 1" = 1'-0"  
 DATE  
 25/11/2025

Deck  
 SHEET  
 3 of 6



SCENIC DESIGNER  
**Harry Northcott Mullin**  
 (412) 334-6584  
 hnmullin@syr.edu

**THIS DRAWING CONTAINS VISUAL CONCEPTS AND CONSTRUCTION SUGGESTIONS ONLY.**  
 The Designer is unqualified to determine the structural or electrical appropriateness of this design, and will not assume responsibility for improper engineering, construction, handling, or use. All materials and construction must comply with the most stringent applicable Federal and Local Fire, Safety, Energy, and Environmental Codes.

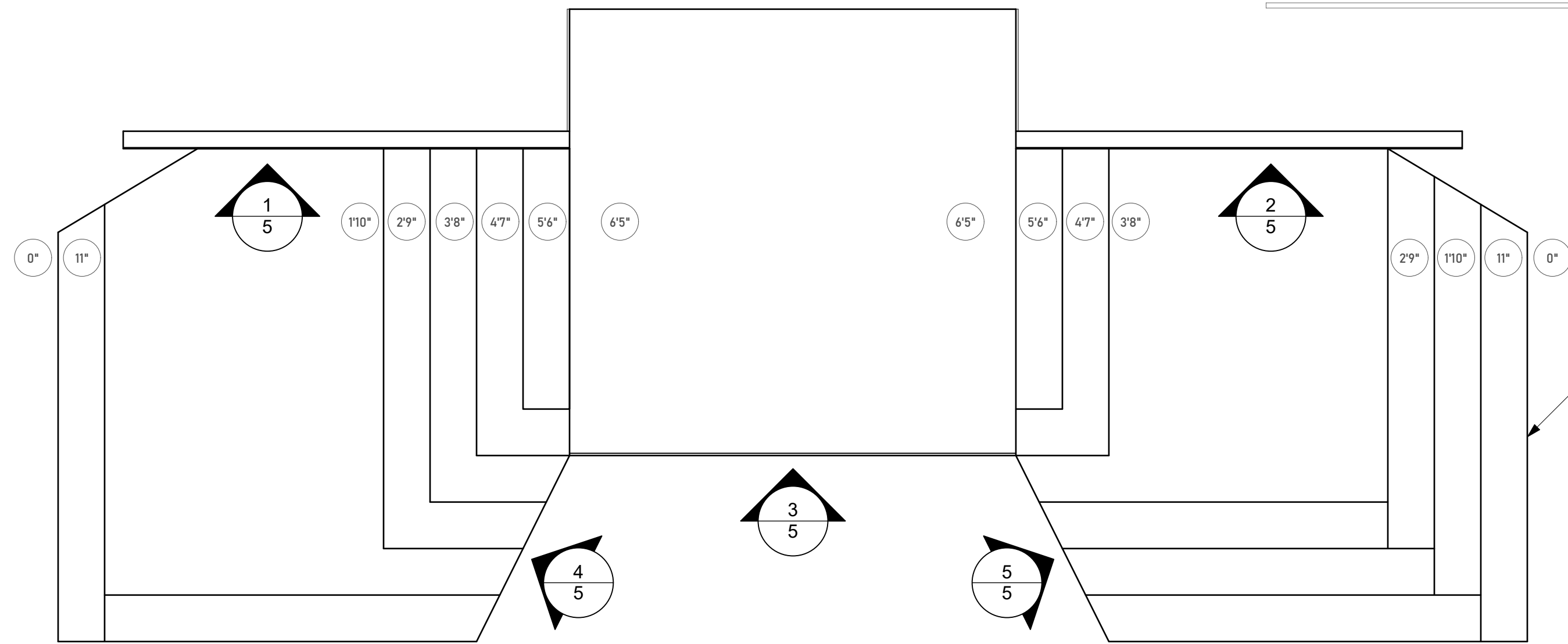
**VERSIONS**  
**A** HNM 25/09/2025 First Draft  
**B** HNM 19/10/2025 Plan with Dims  
**C** HNM 20/10/2025 Details + Paints  
**D** HNM 25/11/2025 Shop Finals

**CONTENTS**  
 1. Ground Plan  
 2. Section  
 3. Deck  
 4. Front Elevation  
 5. Paints  
 6. Locker Carts

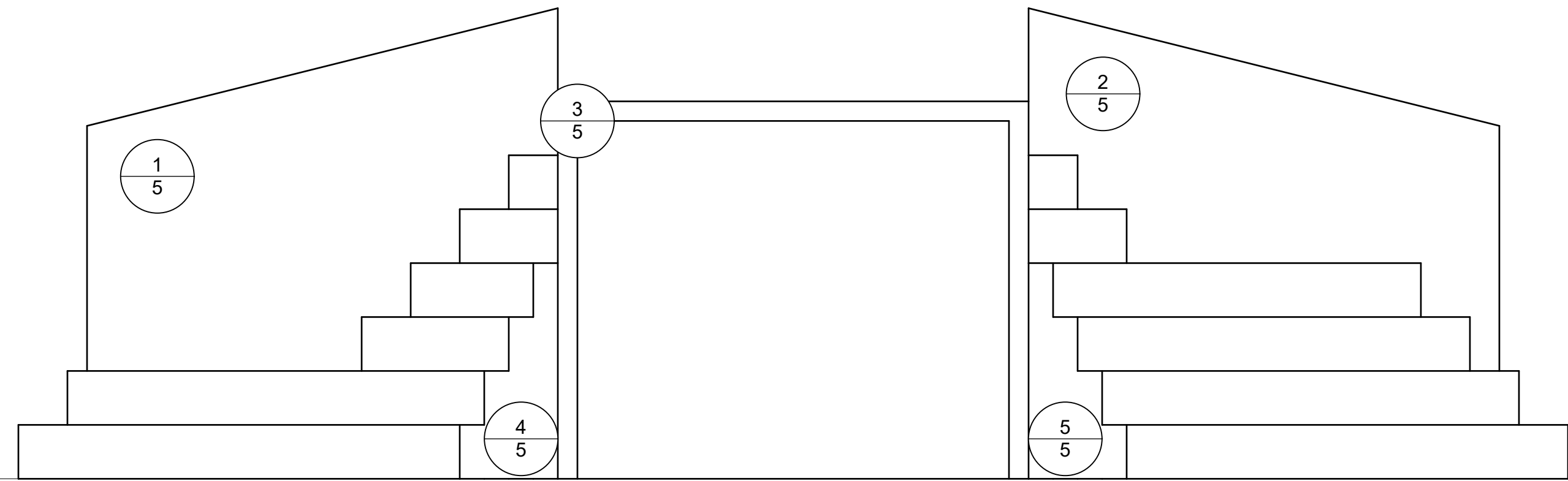
**DRAWN BY**  
 HNM  
**VERSION**  
 D

**SCALE**  
 1" = 1'-0"  
**DATE**  
 25/11/2025

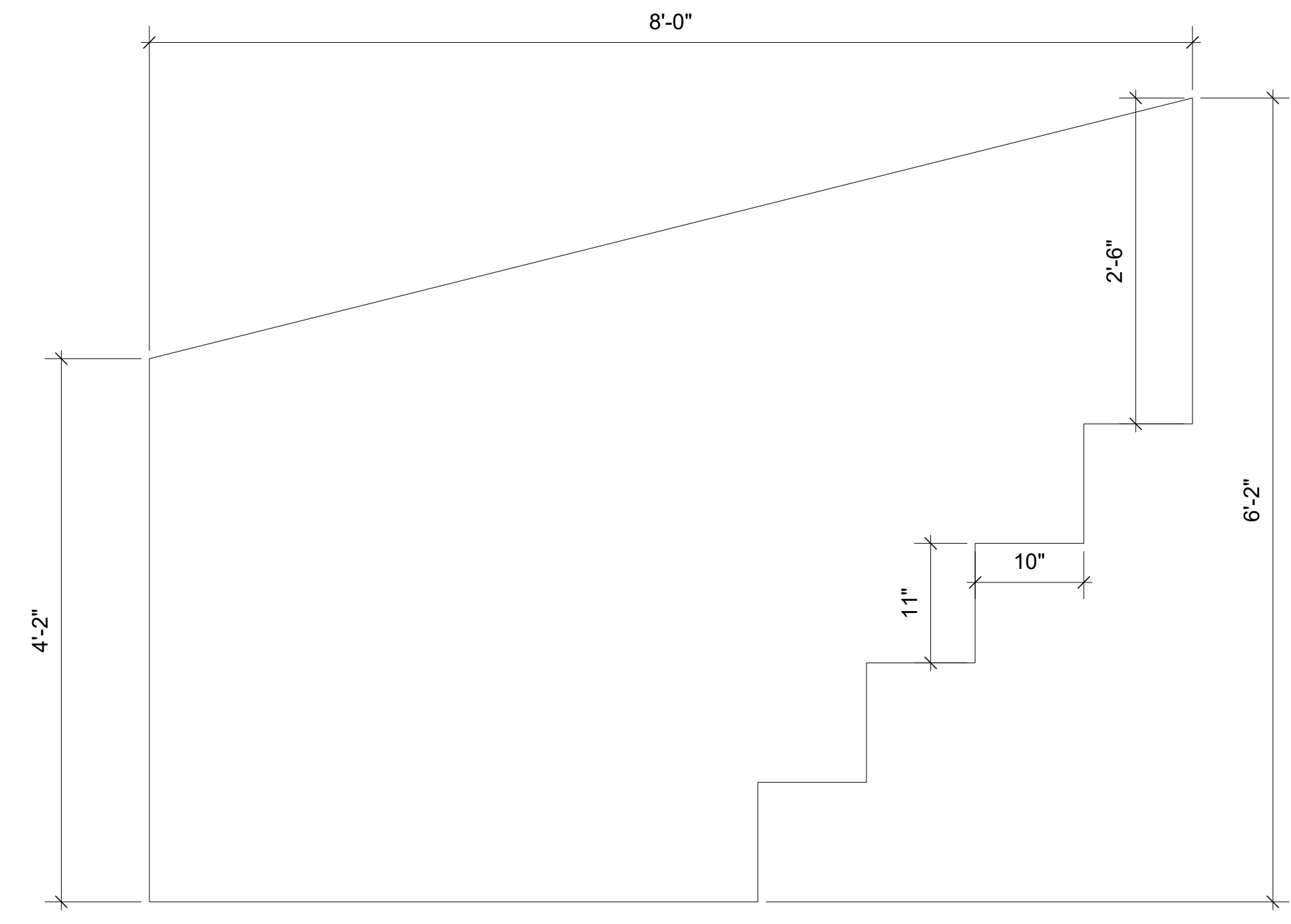
**Front**  
**SHEET**  
 4 of 6



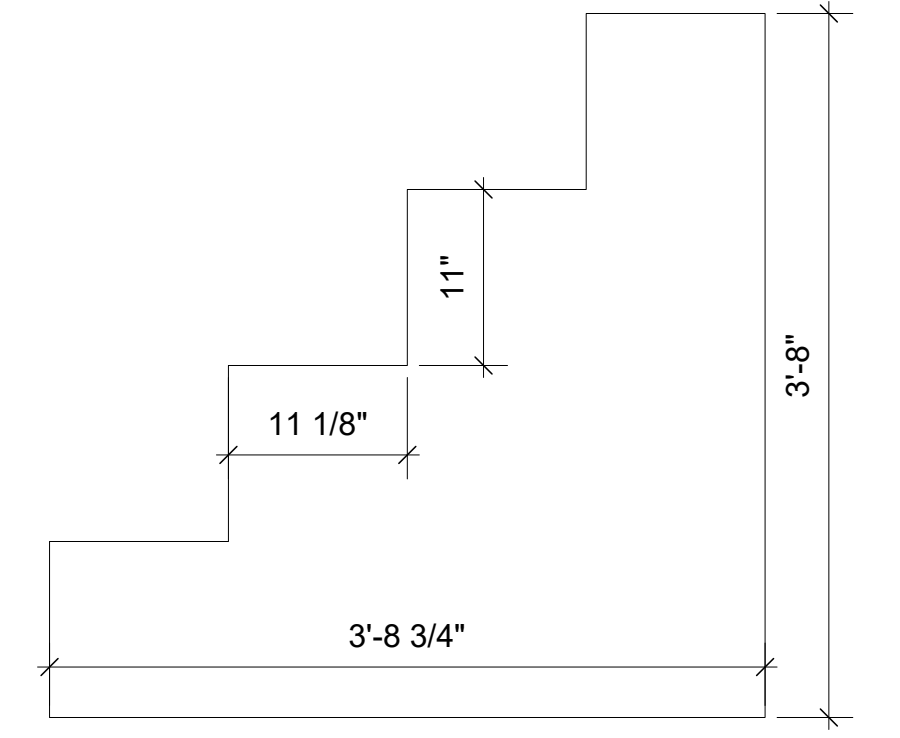
All top facing will need paint treatment, but will generally be hidden from audience view



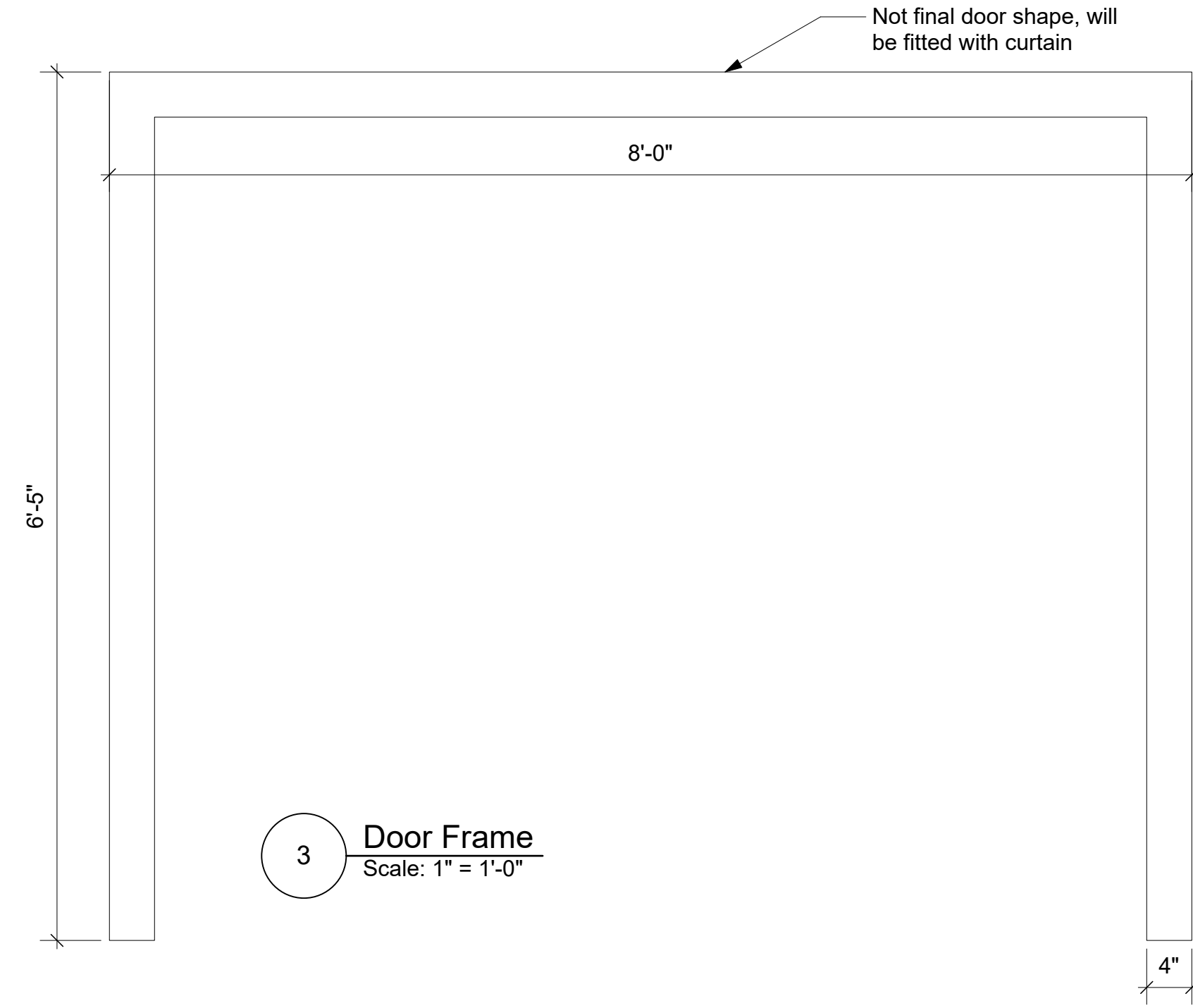
Front and side of all stairs should also be painted - all are 11" rise rectangles



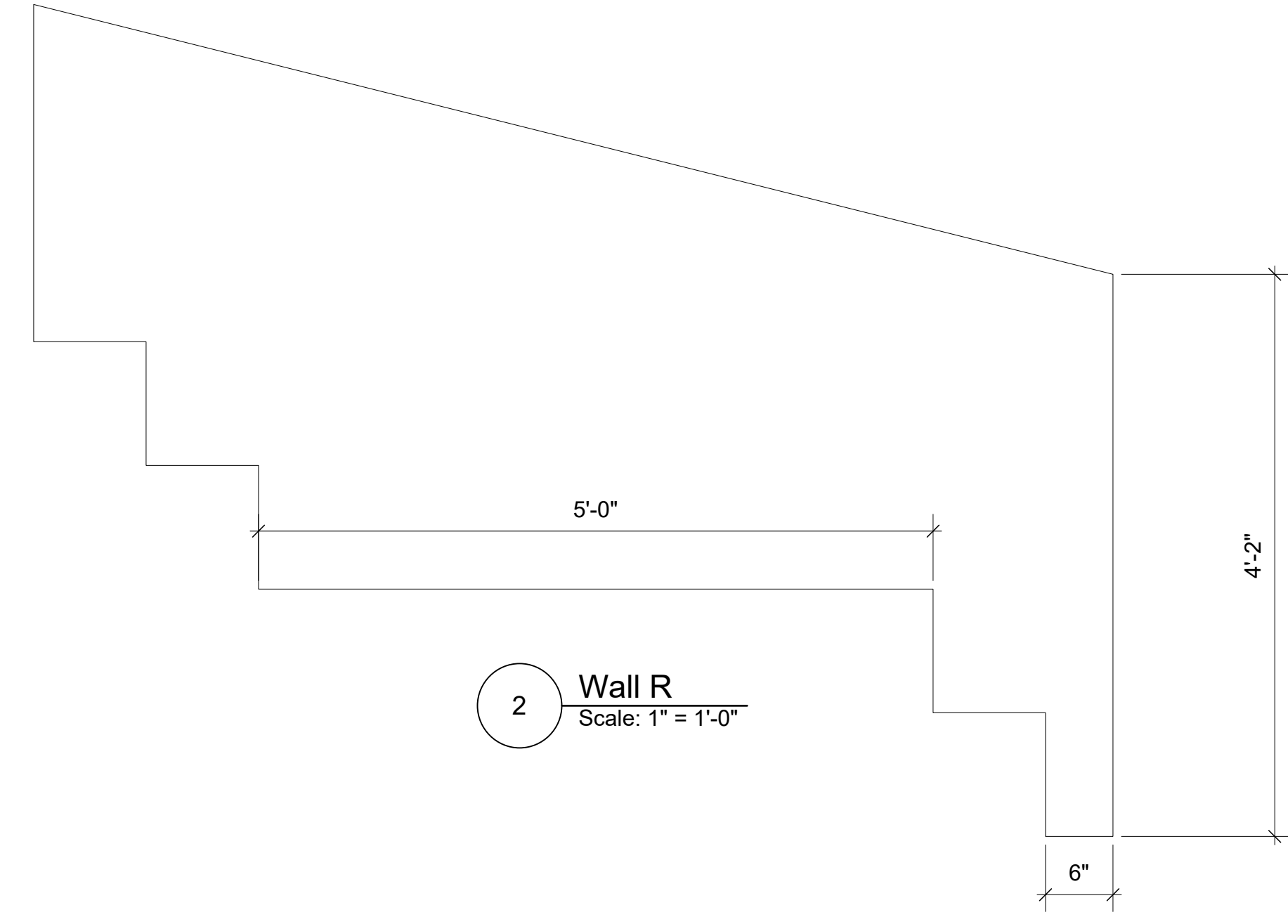
1 Wall L  
Scale: 1" = 1'-0"



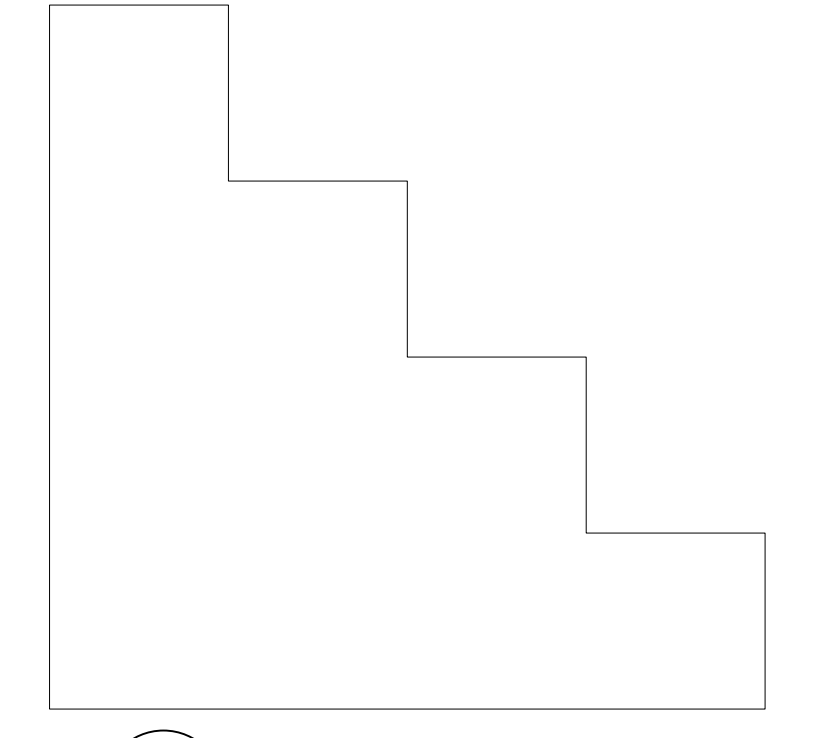
4 Stair Face L  
Scale: 1" = 1'-0"



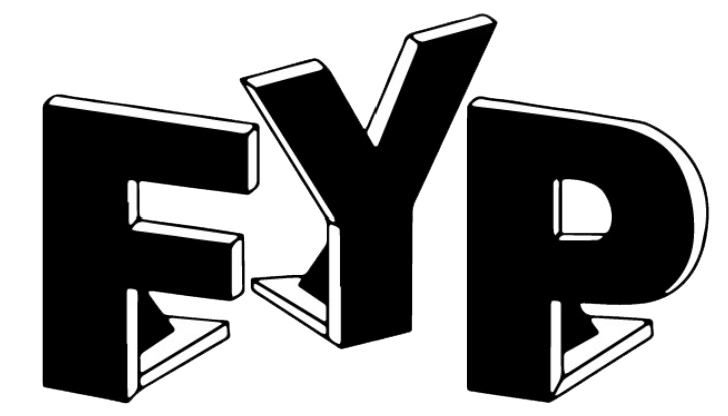
3 Door Frame  
Scale: 1" = 1'-0"



2 Wall R  
Scale: 1" = 1'-0"



5 Stair Face R  
Scale: 1" = 1'-0"



SCENIC DESIGNER  
**Harry Northcott Mullin**  
(412) 334-6584  
hnmullin@syr.edu

THIS DRAWING CONTAINS VISUAL CONCEPTS AND CONSTRUCTION SUGGESTIONS ONLY.  
The Designer is unqualified to determine the structural or electrical appropriateness of this design, and will not assume responsibility for improper engineering, construction, handling, or use. All materials and construction must comply with the most stringent applicable Federal and Local Fire, Safety, Energy, and Environmental Codes.

VERSIONS  
**A** HNM 25/09/2025 First Draft  
**B** HNM 19/10/2025 Plan with Dims  
**C** HNM 20/10/2025 Details + Paints  
**D** HNM 25/11/2025 Shop Finals

CONTENTS  
1. Ground Plan  
2. Section  
3. Deck  
4. Front Elevation  
5. Paints  
6. Locker Carts

DRAWN BY  
HNM

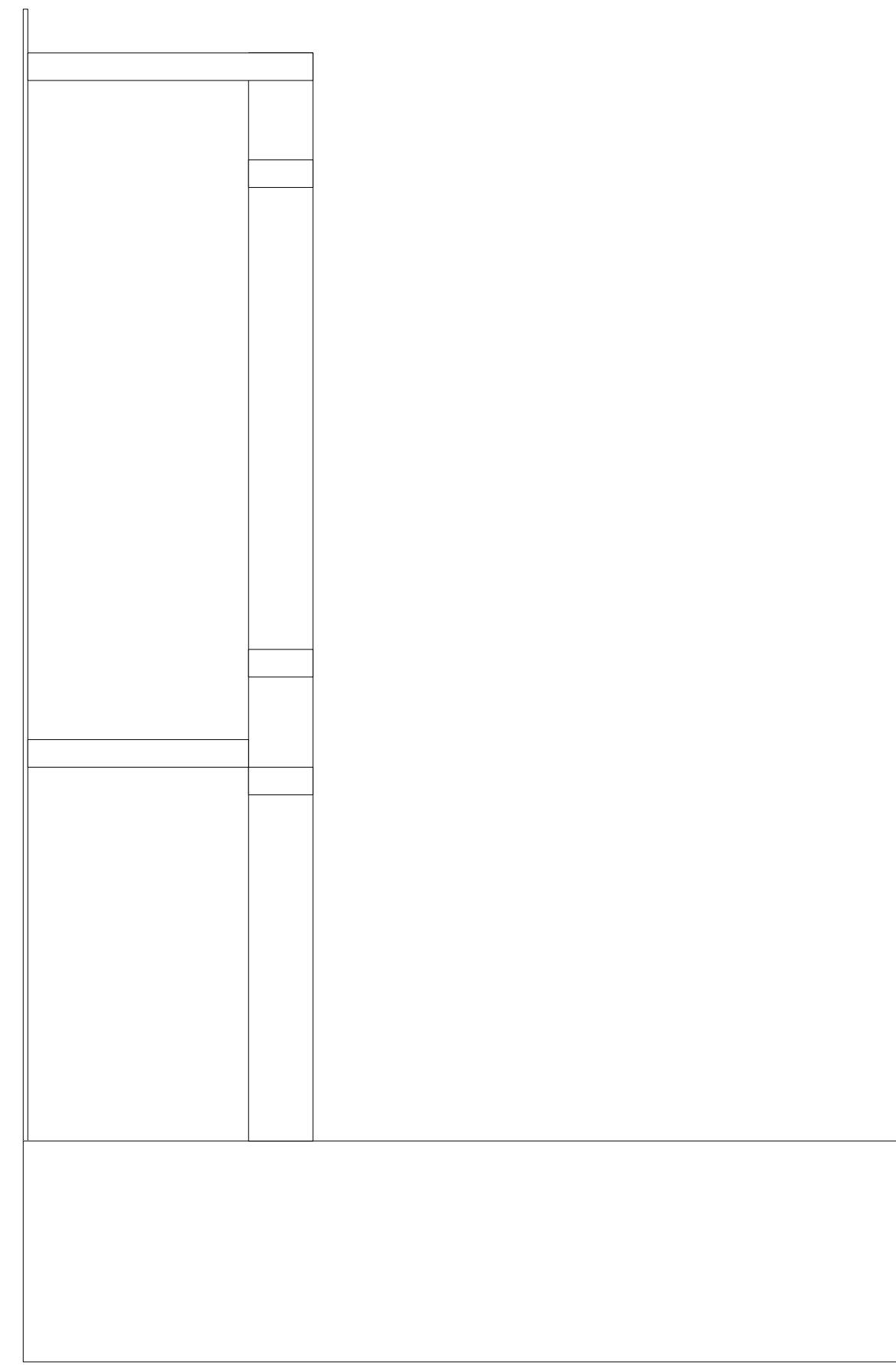
SCALE  
AS NOTED

Paints

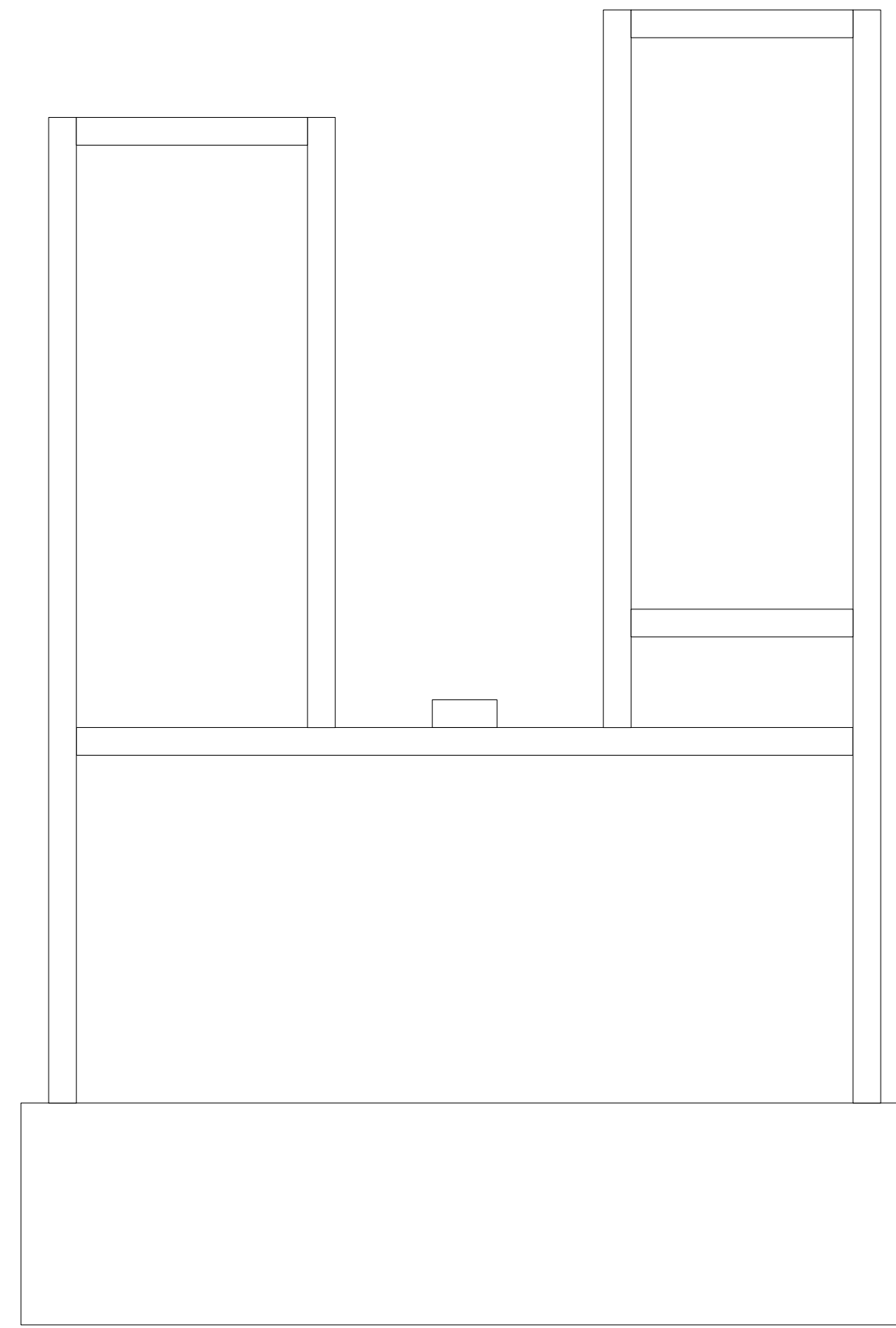
VERSION  
D

DATE  
25/11/2025

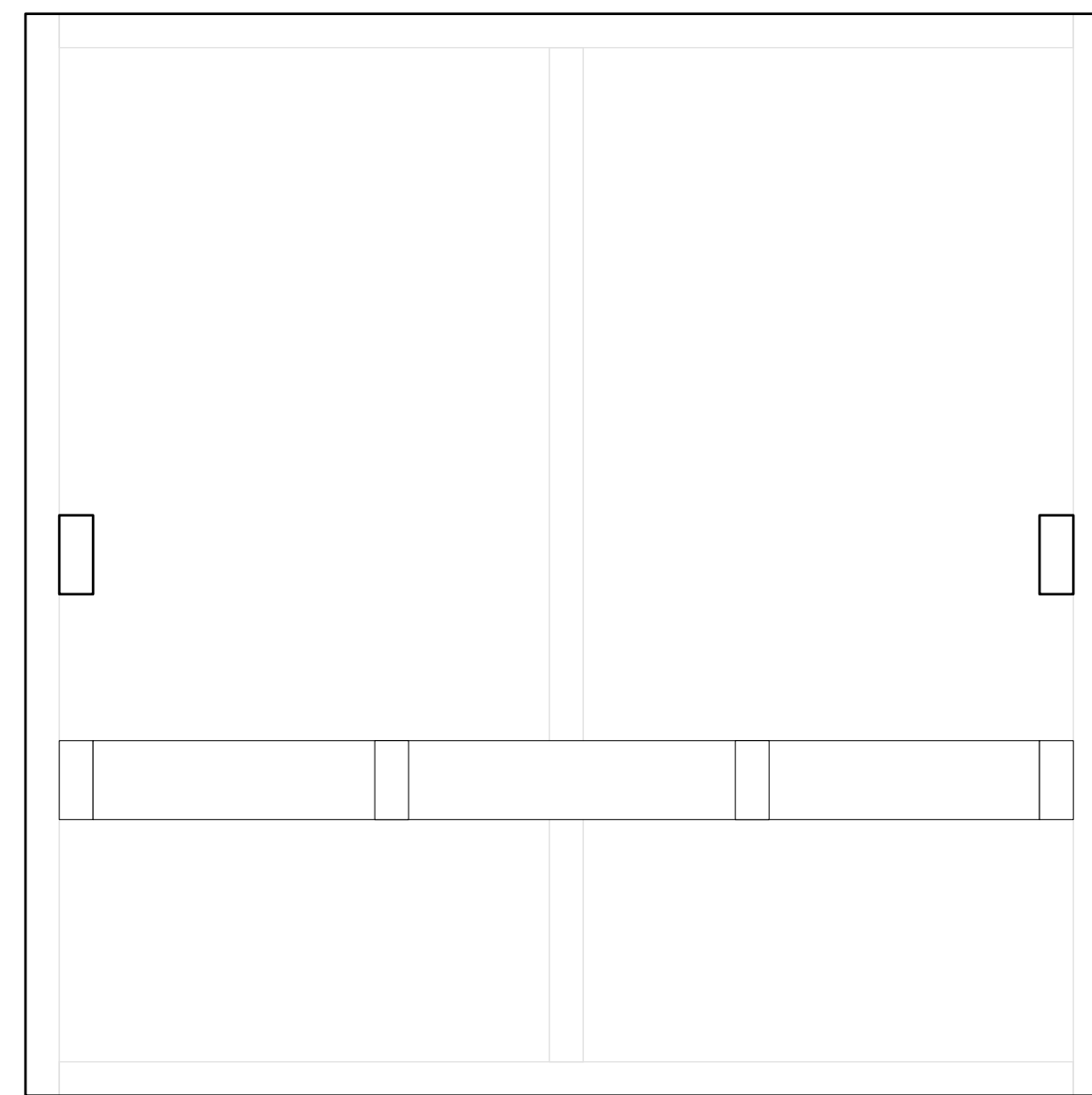
SHEET  
5 of 6



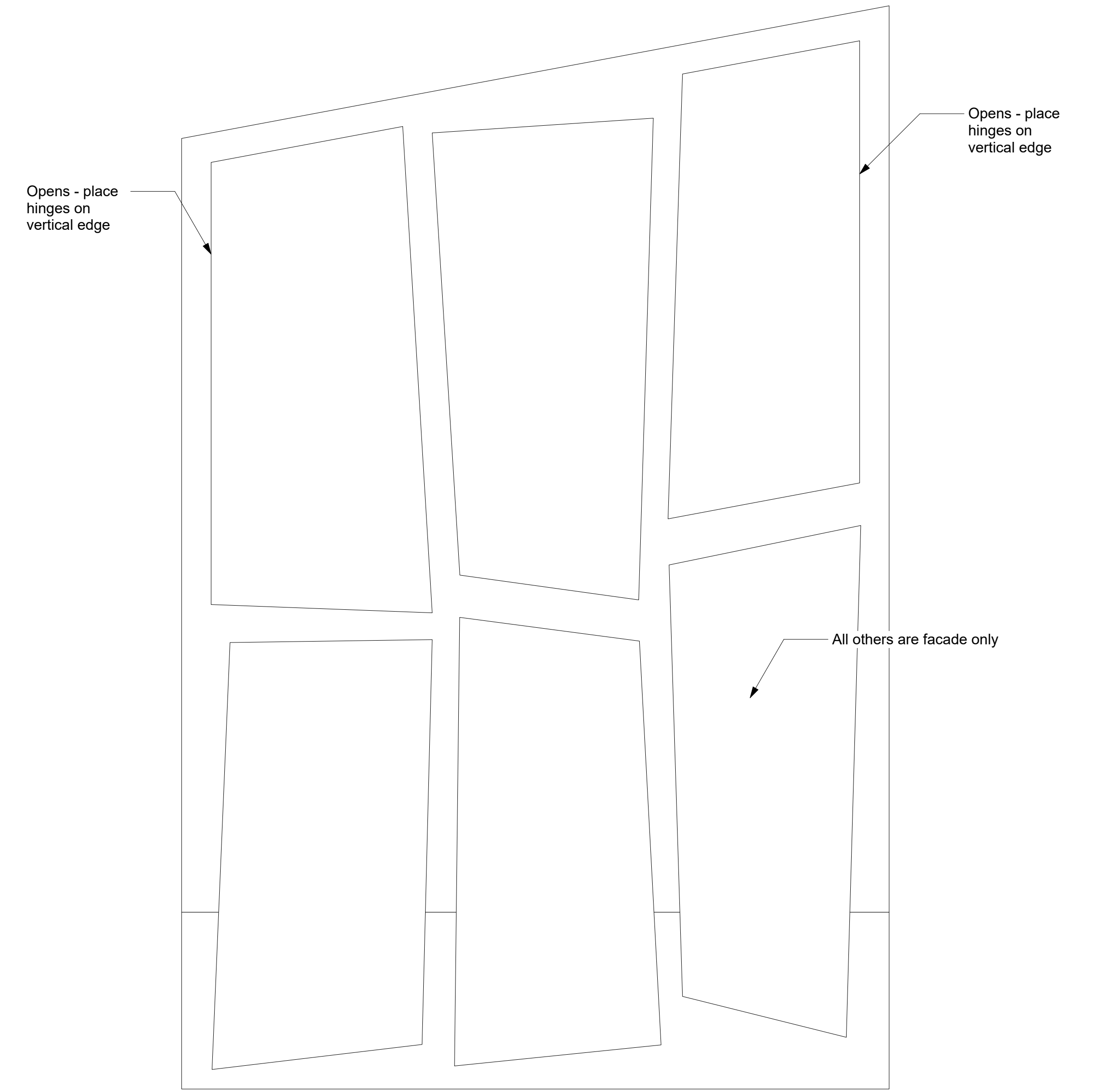
1 Lockers Side  
Scale: 1 1/2" = 1'-0"



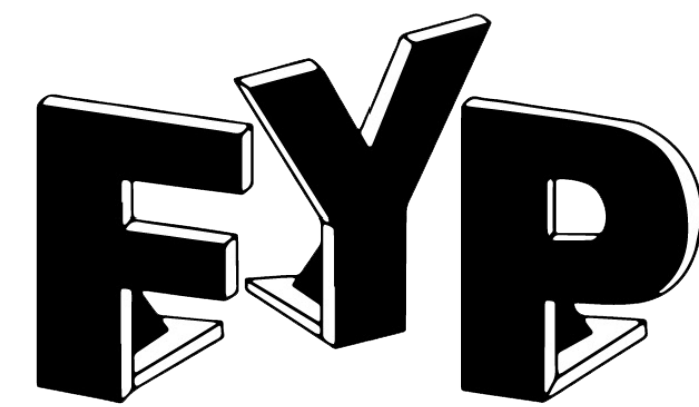
2 Lokers Shell Elevation  
Scale: 1 1/2" = 1'-0"



4 Lockers Plan  
Scale: 1 1/2" = 1'-0"



3 Lockers Front  
Scale: 2" = 1'-0"



SCENIC DESIGNER  
**Harry Northcott Mullin**  
 (412) 334-6584  
 hnmullin@syr.edu

THIS DRAWING CONTAINS VISUAL CONCEPTS AND CONSTRUCTION SUGGESTIONS ONLY.  
 The Designer is unqualified to determine the structural or electrical appropriateness of this design, and will not assume responsibility for improper engineering, construction, handling, or use. All materials and construction must comply with the most stringent applicable Federal and Local Fire, Safety, Energy, and Environmental Codes.

VERSIONS  
**A** HNM 25/09/2025 First Draft  
**B** HNM 19/10/2025 Plan with Dims  
**C** HNM 20/10/2025 Details + Paints  
**D** HNM 25/11/2025 Shop Finals

CONTENTS  
 1. Ground Plan  
 2. Section  
 3. Deck  
 4. Front Elevation  
 5. Paints  
 6. Locker Carts

DRAWN BY  
 HNM

SCALE  
 AS NOTED

Locker Carts

VERSION  
 D

DATE  
 25/11/2025

SHEET  
 6 of 6