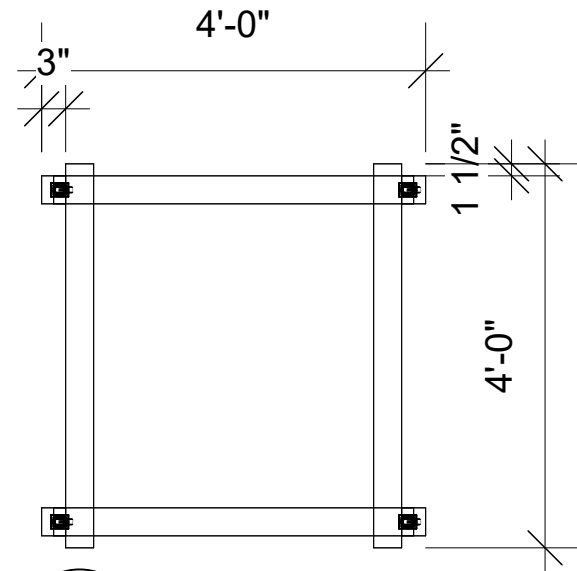
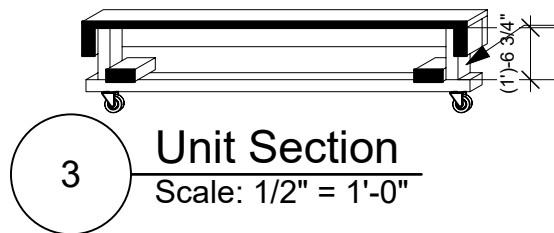


1 **4x4 Flat**
Scale: 1/2" = 1'-0"

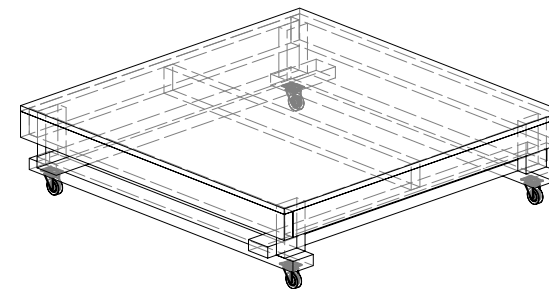


2 **4x4 Wagon**
Scale: 1/2" = 1'-0"



Build 4 units at 1' total height and 1 at 2' total height, this beam will be approx. 6 1/2" tall (+1') depending on caster height.

3 **Unit Section**
Scale: 1/2" = 1'-0"

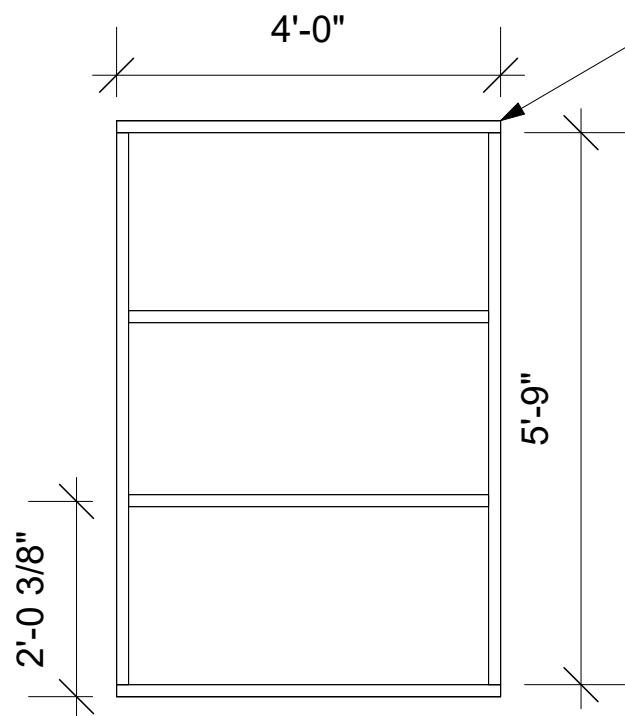


4 **Isometric**
Scale: 1/2" = 1'-0"

Legally Blonde	
4x4 Wagons	Date : 04/05/2025
Goldstein Auditorium	Scale : 1/2" = 1'
Director : Skylar Jones	3 OF 8
Designer : Harry Mullin, Alex Vaida	
Revisions : 01/12/2025	

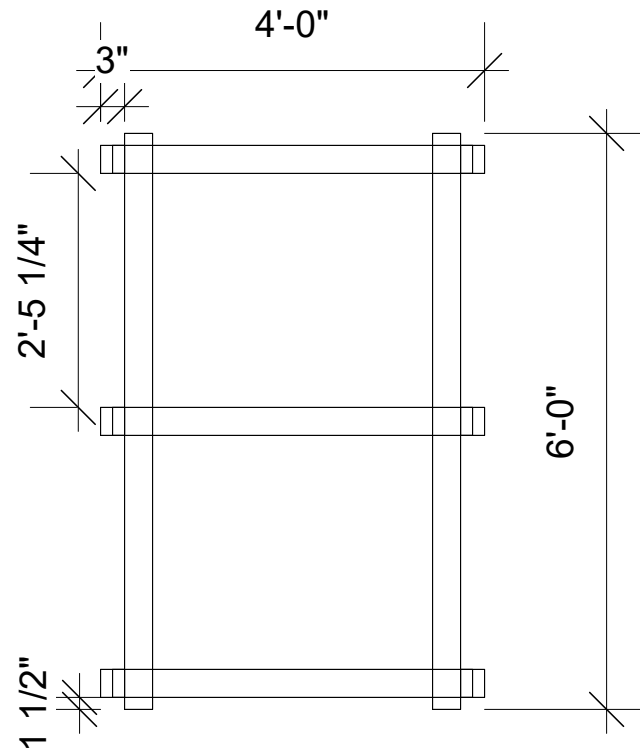
General Notes

1. Face in 1/4" ply, leaving rolling gap at bottom.
2. Attach wagon breaks where needed.
3. Build 4 units 1' in height and 1 unit 2' in height.
4. Cut 2 of the 1' tall and the 2' tall wagon 3/4" ply flat facing as shown in plate 7, drawing 3



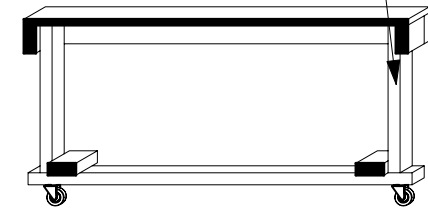
1 **4x4 Flat**
Scale: 1/2" = 1'-0"

Face in 3/4" ply; holes will be cut for ETS pipe curtains to mount inside



2 **4x4 Wagon**
Scale: 1/2" = 1'-0"

Beam will be approx. 1'-6.5" for a total height of 2', depending on caster size



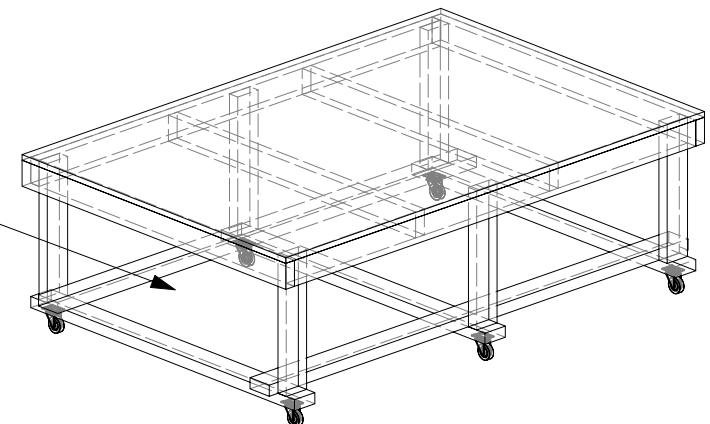
3 **Unit Section**
Scale: 1/2" = 1'-0"

Legally Blonde	
6x4 Wagon	Date : 04/05/2025
Goldstein Auditorium	Scale : 1/2" = 1'
Director : Skylar Jones	4 OF 8
Designer : Harry Mullin, Alex Vaida	
Revisions : 01/12/2025	

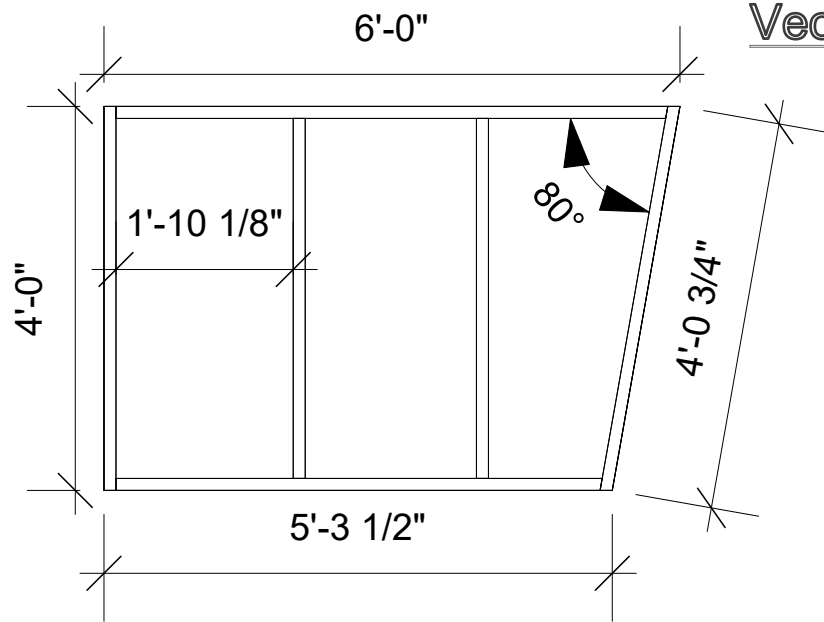
Cross bracing/trussing will likely be nessecary

General Notes

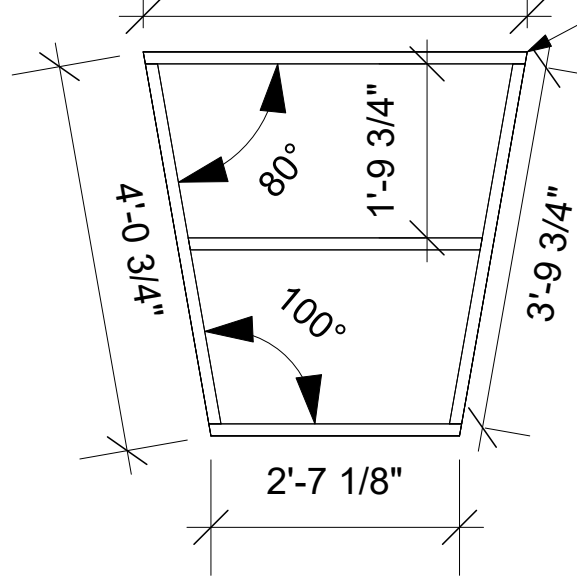
1. Face in 1/4" ply, leaving rolling gap at bottom.
2. Attatch wagon breaks where needed.
3. Cross bracing/trussing will likely be nessecary.



4 **Isometric**
Scale: 1/2" = 1'-0"

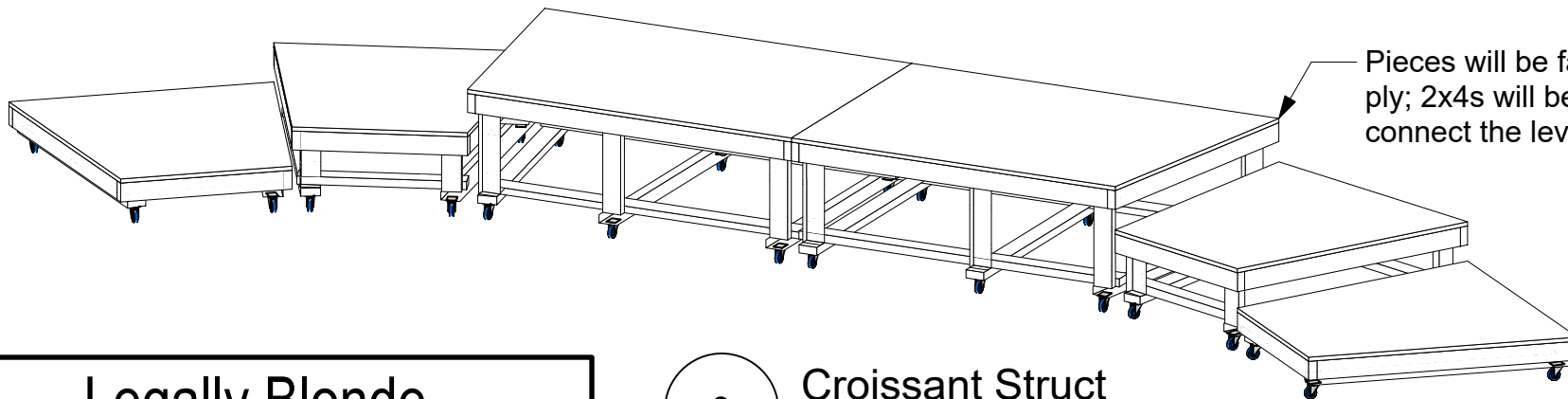


1 **Top Platform (2x)**
Scale: 1/2" = 1'-0"



2 **Step Platform (4x)**
Scale: 1/2" = 1'-0"

Face in 3/4" ply, with approx. 3/4" overhang on the outside edge



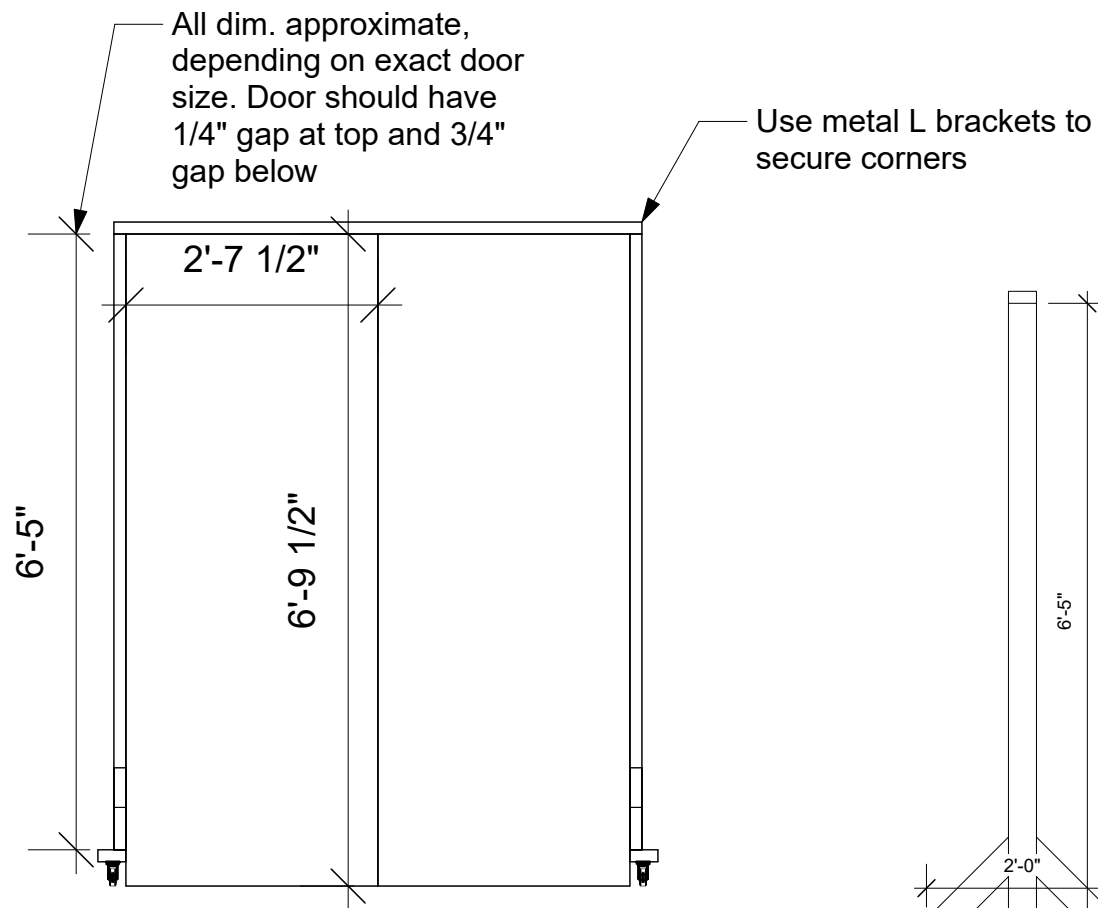
Pieces will be faced in 1/4 ply; 2x4s will be used to connect the levels

3 **Croissant Struct**
Scale: 3/8" = 1'-0"

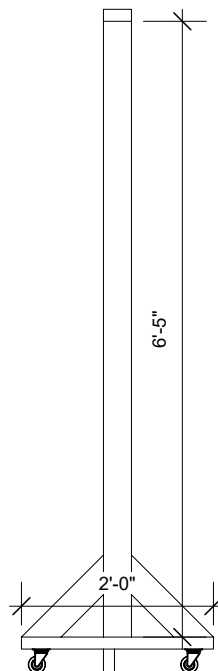
Legally Blonde	
Croissant	Date : 04/05/2025
Goldstein Auditorium	Scale : Various
Director : Skylar Jones	5 OF 8
Designer : Harry Mullin, Alex Vaida	
Revisions : 01/12/2025	

General Notes

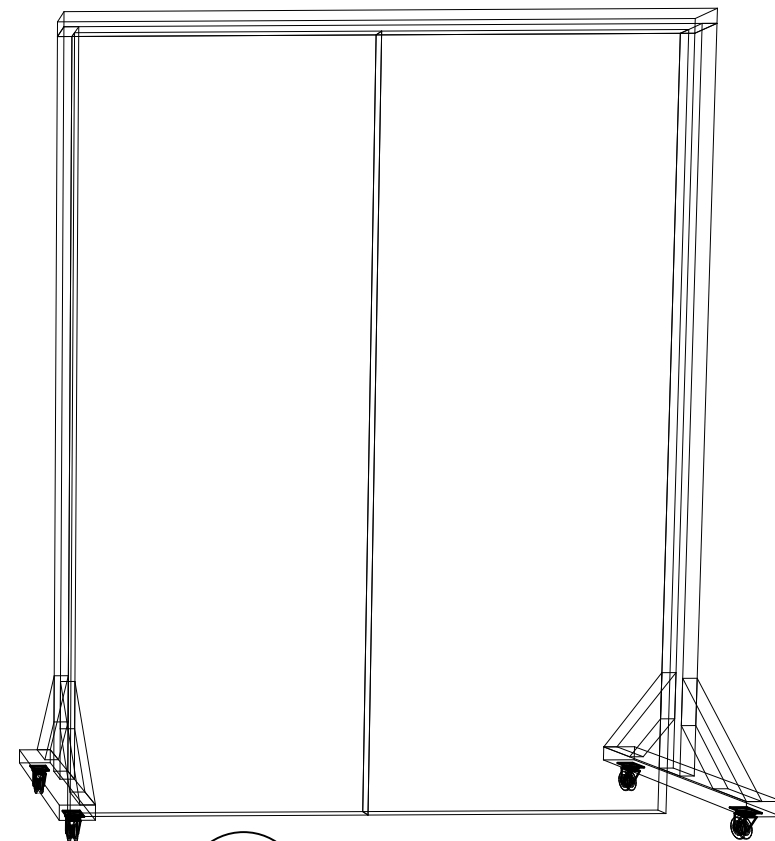
1. Face sides in 1/4" ply, leaving gap for rolling.
2. Attatch railing to back as in original sketch.
3. Attatch wagon breaks as needed to secure points
4. Segments will have to be combined using ply and 2x4s after transportation



1 Door Elevation
Scale: 1/2" = 1'-0"



2 Section
Scale: 1/2" = 1'-0"



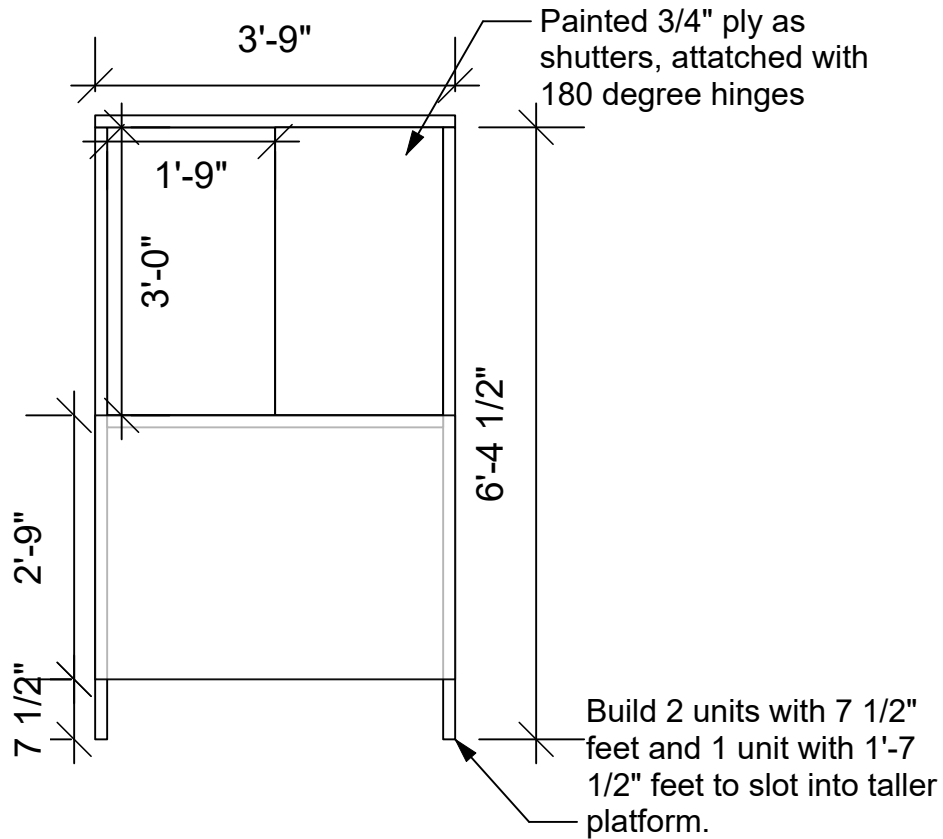
Legally Blonde	
Door	Date : 04/05/2025
Goldstein Auditorium	Scale : Various
Director : Skylar Jones	6 OF 8
Designer : Harry Mullin, Alex Vaida	
Revisions : 01/12/2025	

General Notes

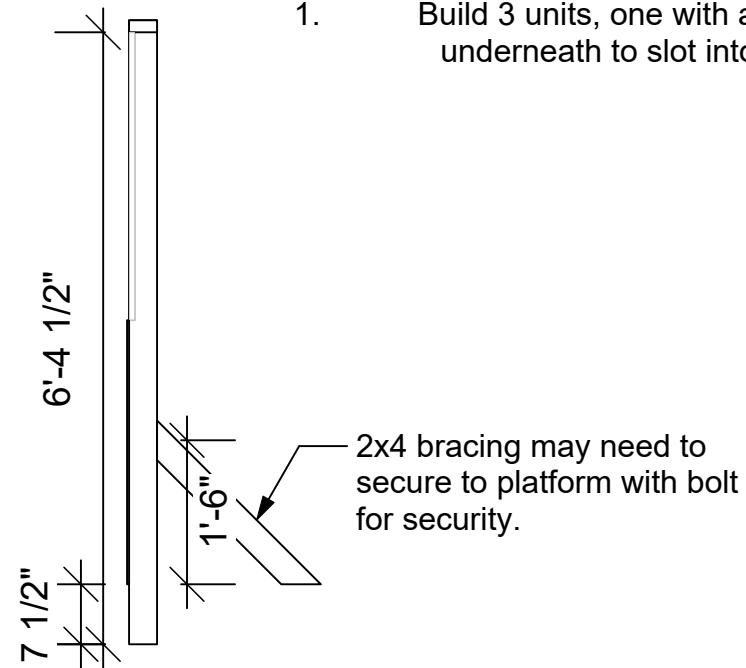
1. Door should have rolling gap of 3/4" and top gap of 1/4".
2. Two way hinges will be attached and ball-catches will be used in the upper beam.
3. All dim. are approxomate, and design changes may be nessecary for stability of construction.

General Notes

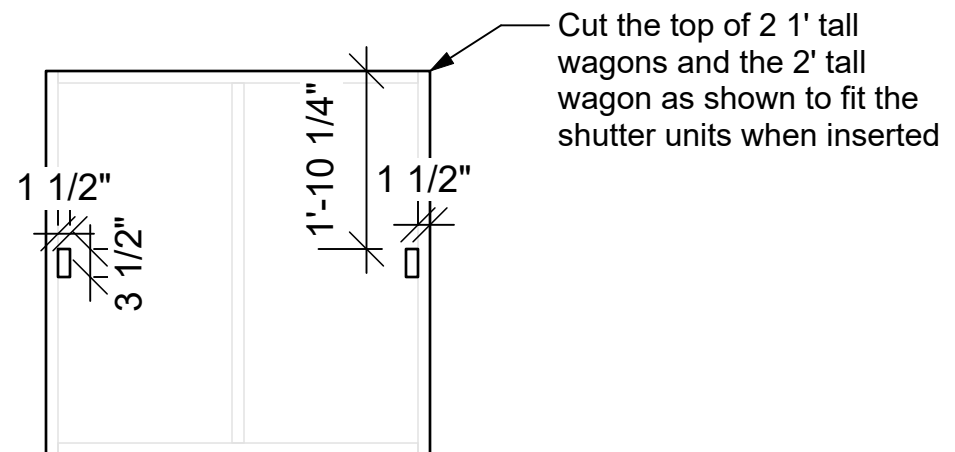
1. Build 3 units, one with an additional foot underneath to slot into taller platform



1 **Shutter**
Scale: 1/2" = 1'-0"



2 **Section**
Scale: 1/2" = 1'-0"



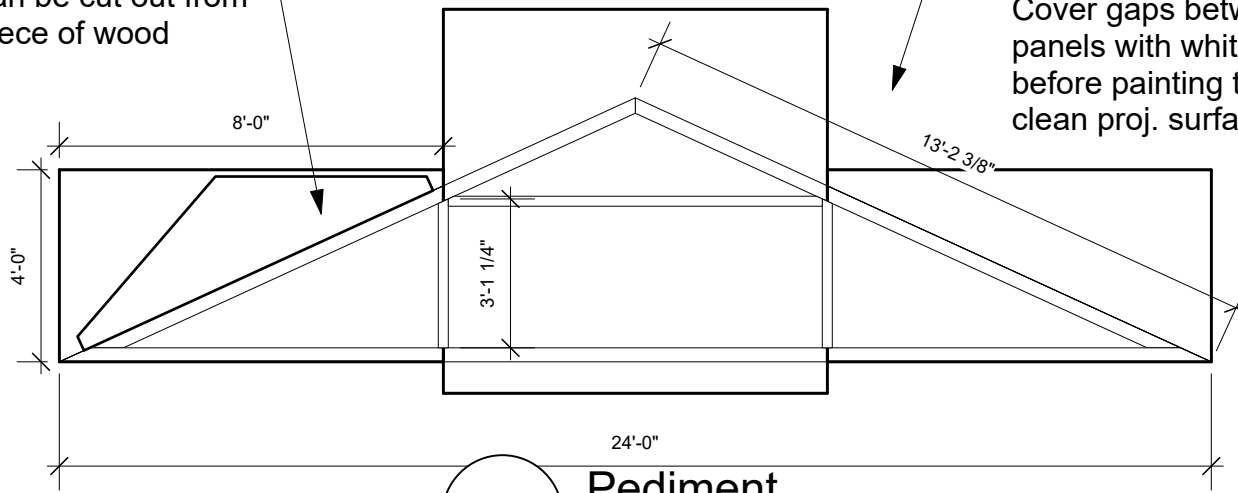
3 **Platform Top**
Scale: 1/2" = 1'-0"

Legally Blonde	
Shutters	Date : 04/05/2025
Goldstein Auditorium	Scale : Various
Director : Skylar Jones	7 OF 8
Designer : Harry Mullin, Alex Vaida	
Revisions : 01/12/2025	

Piece can be cut out from same piece of wood

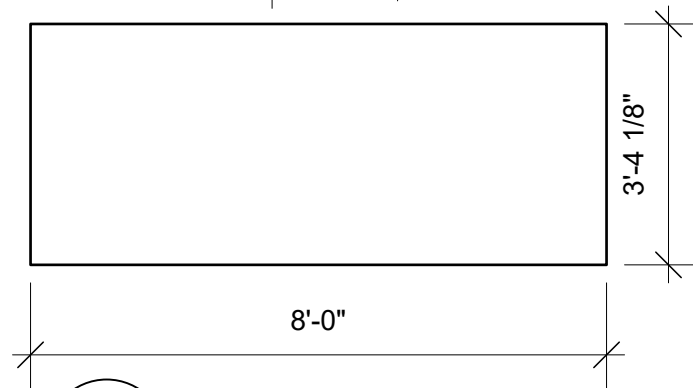
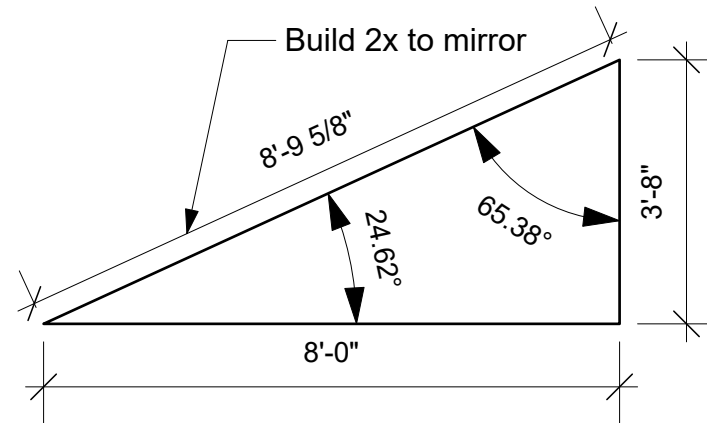
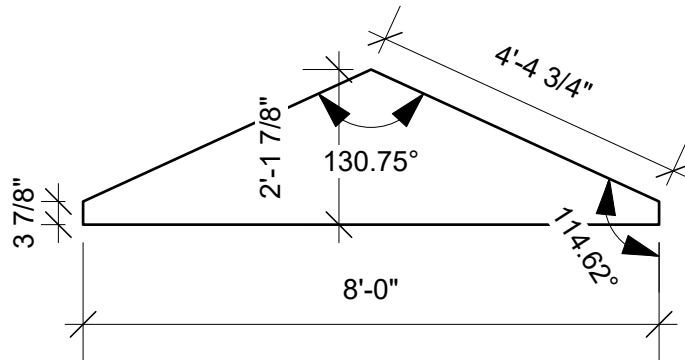
Frame with 2x4s placed standing up and moulding around outside edge. Cover gaps between panels with white gaff tape before painting to create clean proj. surface

Aircraft cable through hole on upper 2x4, attached to lower 2x4



1 Pediment
Scale: 1/4" = 1'-0"

4 Section
Scale: 3/4" = 1'-0"

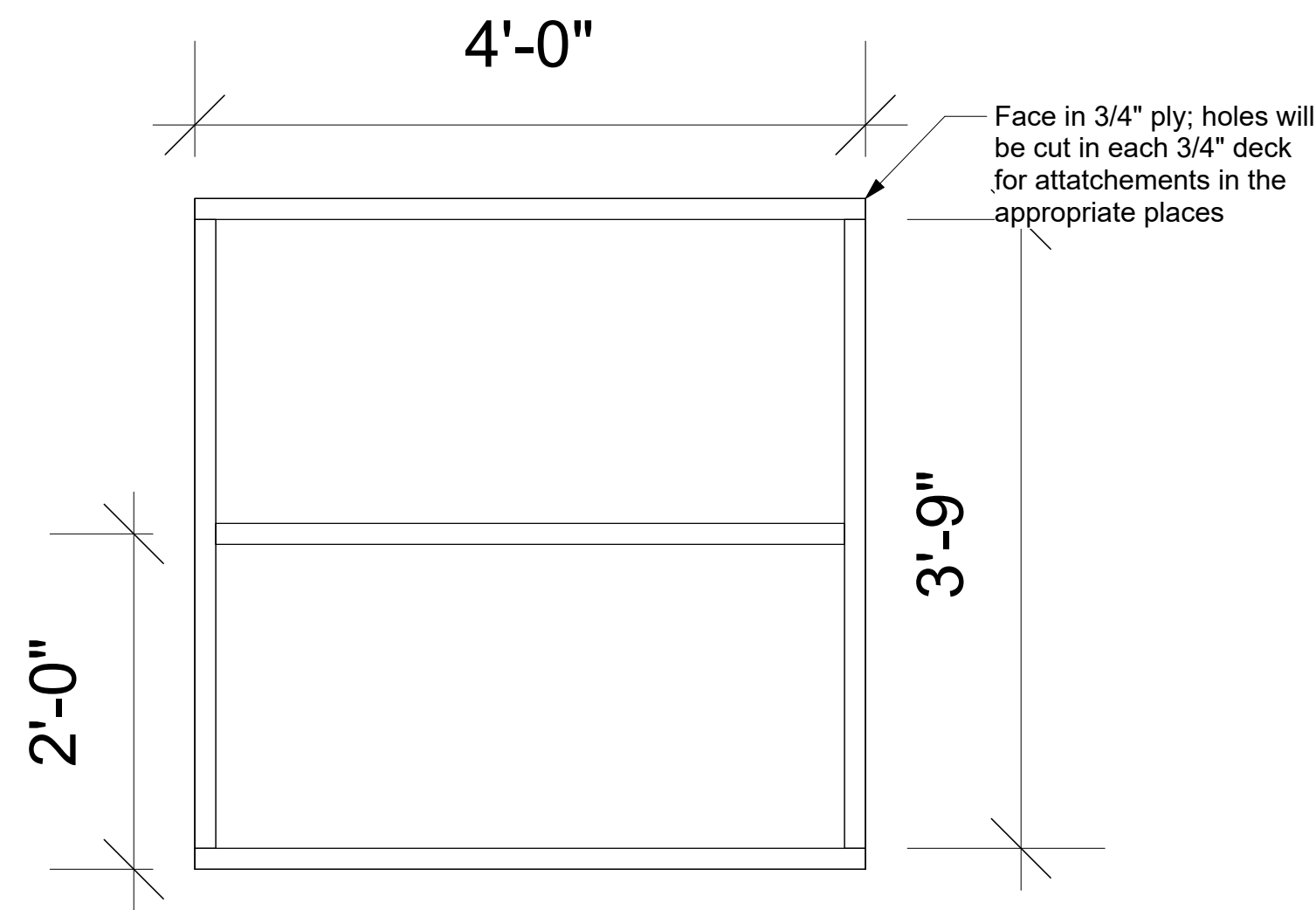


2 Wood Cutouts
Scale: 3/8" = 1'-0"

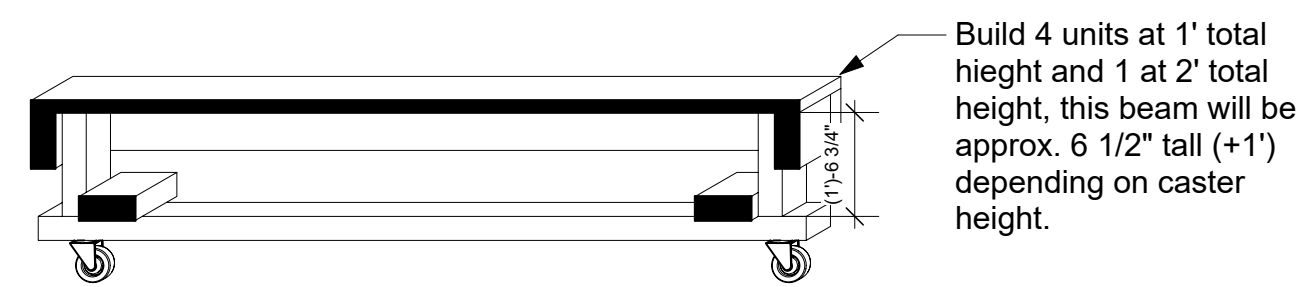
Legally Blonde	
Pediment	Date : 04/05/2025
Goldstein Auditorium	Scale : Various
Director : Skylar Jones	8 OF 8
Designer : Harry Mullin, Alex Vaida	
Revisions : 01/12/2025	

General Notes

- 1/4" ply facing sheets shown in heavy lines.
- Thin side of 2x4s where beams are shown.
- Moulding around perimeter.
- Tape over gaps between sheets with white gaff tape, then paint over tape for seamless proj. surface.
- Top pentagon piece can be cut from remainder of a triangle piece (see left rect. of drawing 1)

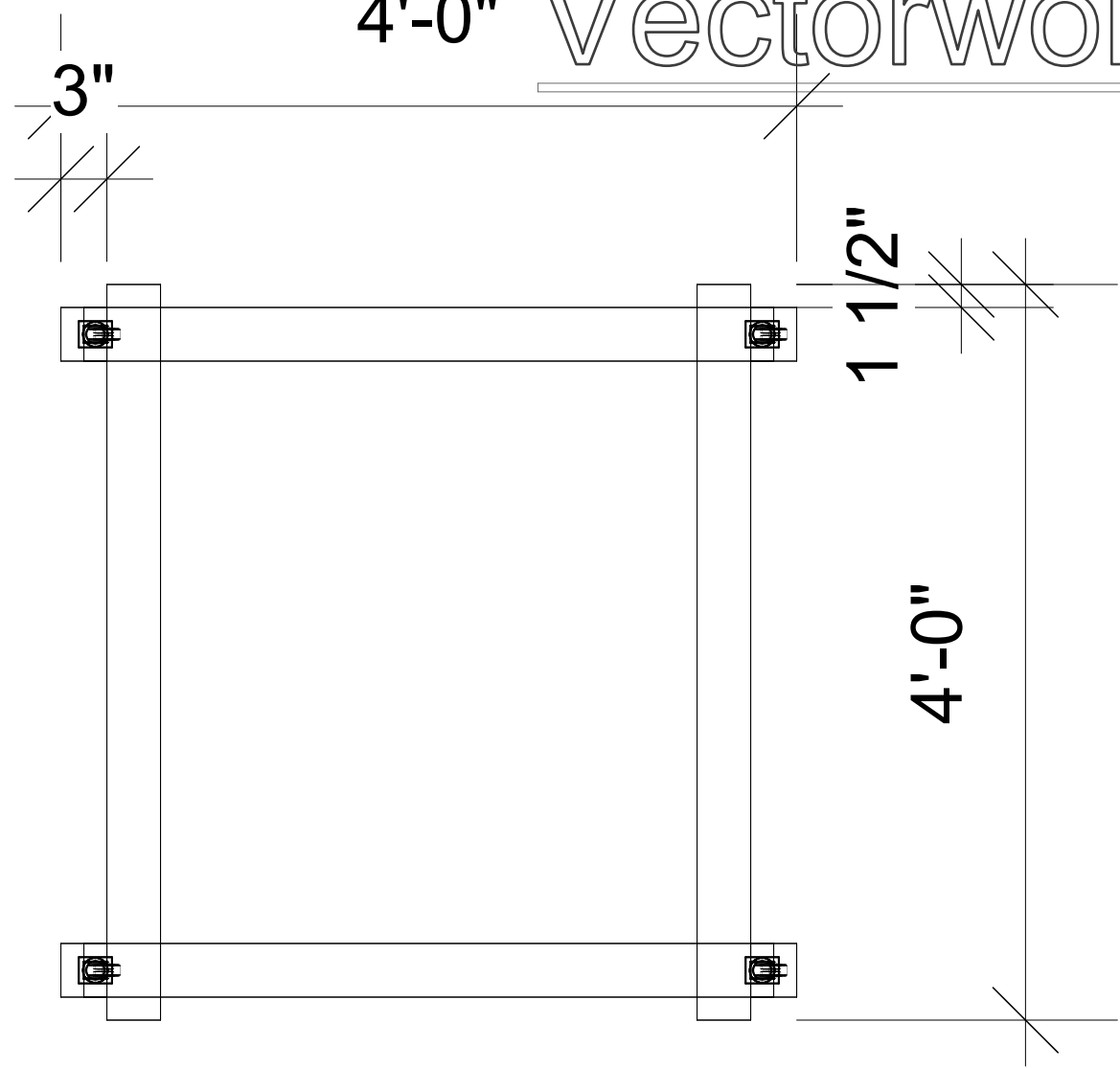


1 4x4 Flat
Scale: 1" = 1'-0"

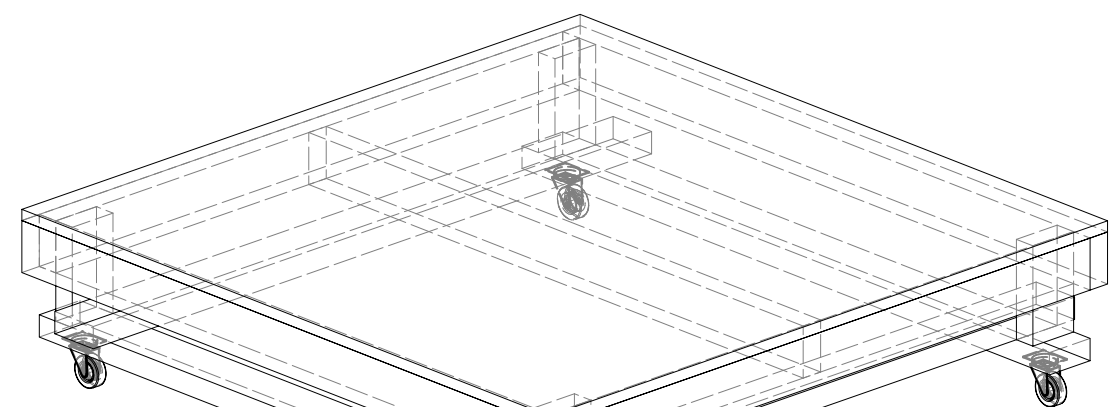


3 Unit Section
Scale: 1" = 1'-0"

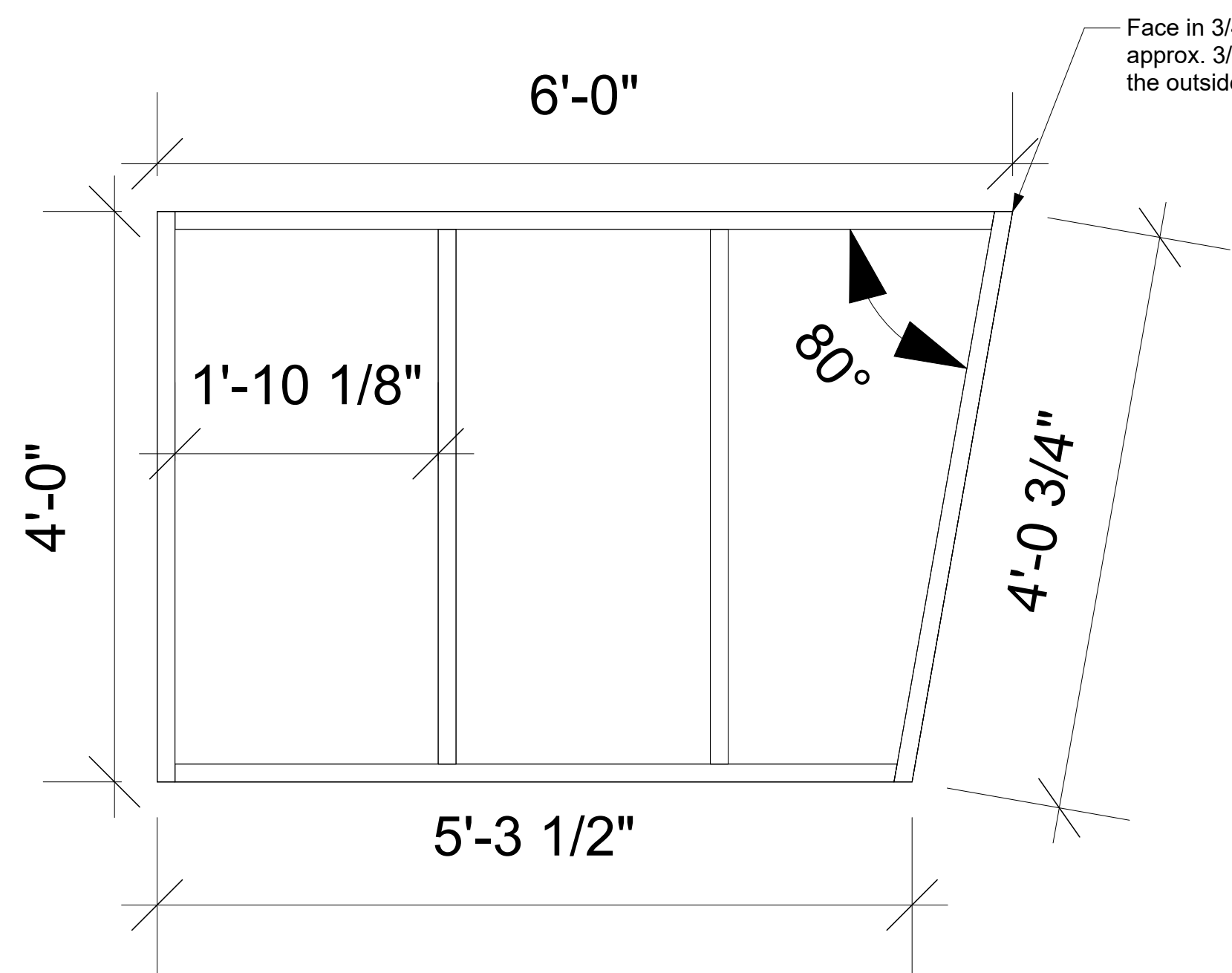
- General Notes
1. Face in 1/4" ply, leaving rolling gap at bottom.
 2. Attach wagon breaks where needed.
 3. Build 4 units 1' in height and 1 unit 2' in height.
 4. Cut 2 of the 1' tall and the 2' tall wagon 3/4" ply flat facing as shown in plate 2, drawing 9 (or plate 7, drawing 3)



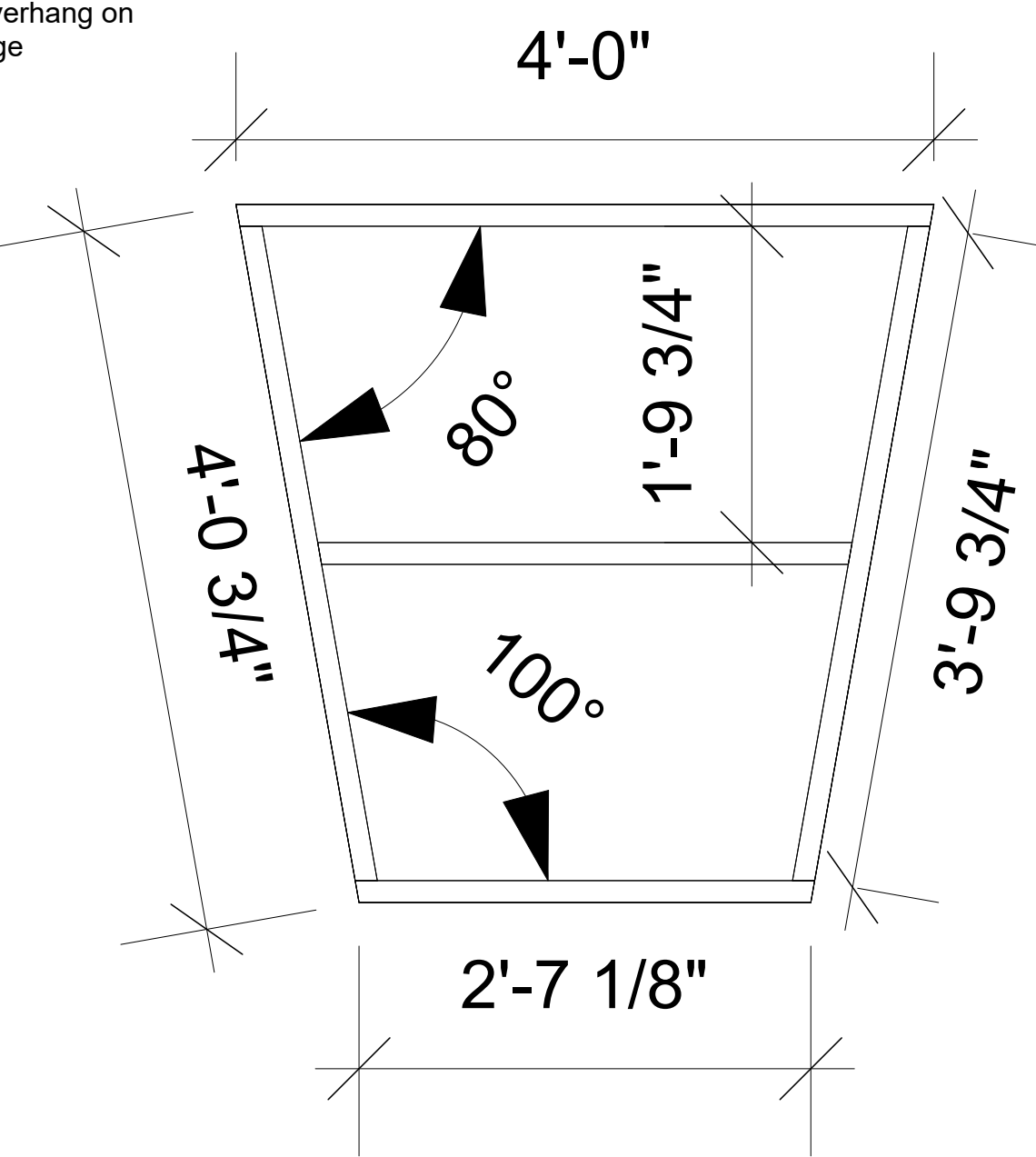
2 4x4 Wagon
Scale: 1" = 1'-0"



4 Isometric
Scale: 1" = 1'-0"

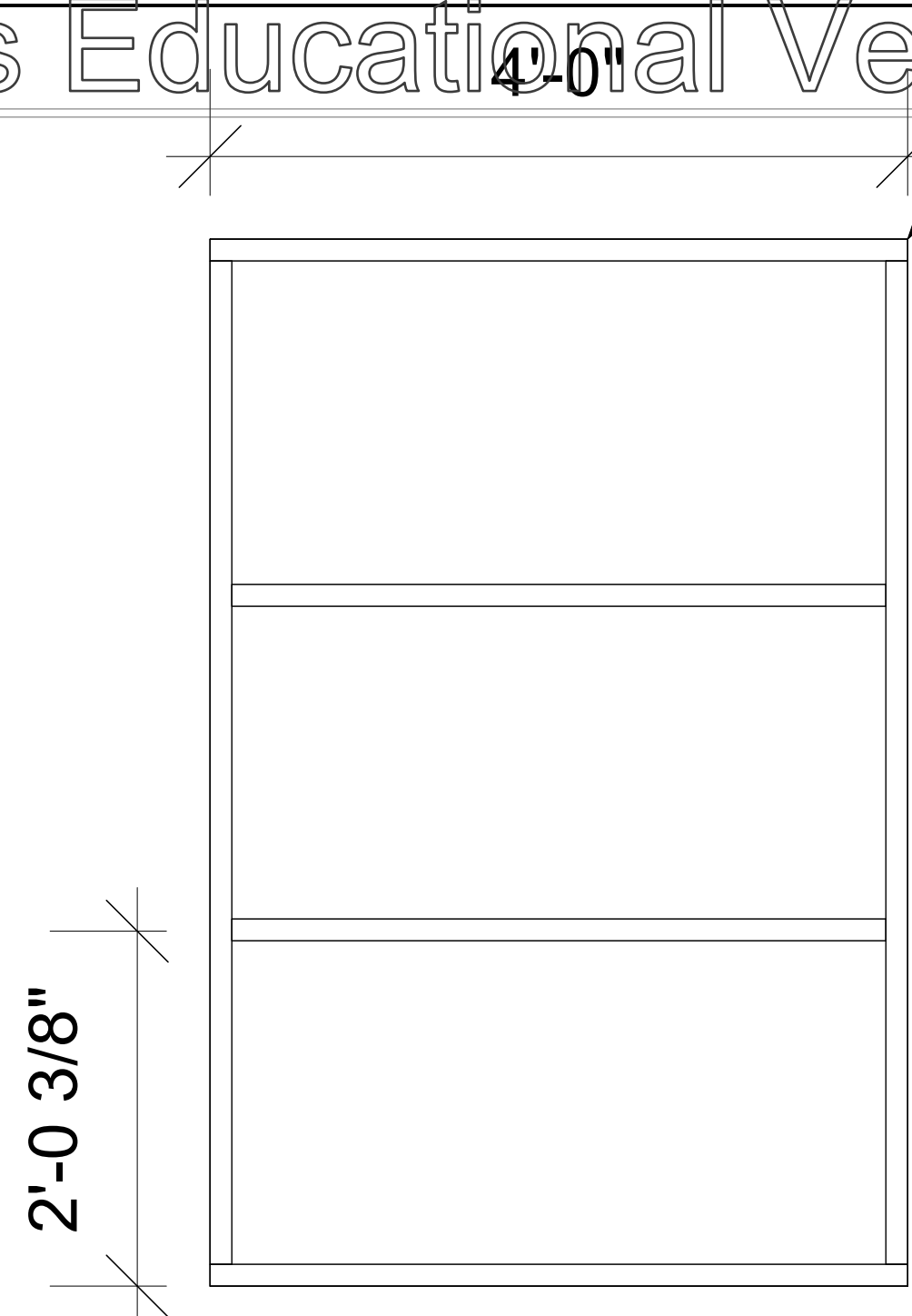


9 Top Platform (2x)
Scale: 1" = 1'-0"

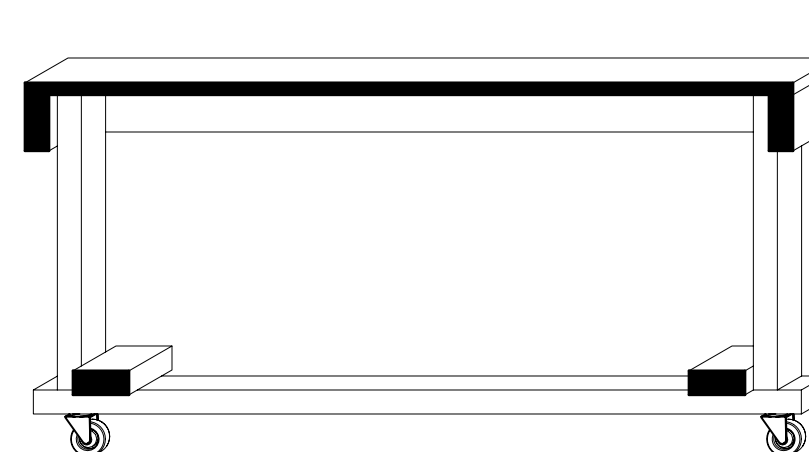


10 Step Platform (4x)
Scale: 1" = 1'-0"

- General Notes
1. Face sides in 1/4" ply, leaving gap for rolling.
 2. Attach railing to back as in original sketch.
 3. Attach wagon breaks as needed to secure points
 4. Segments will have to be combined using ply and 2x4s after transportation

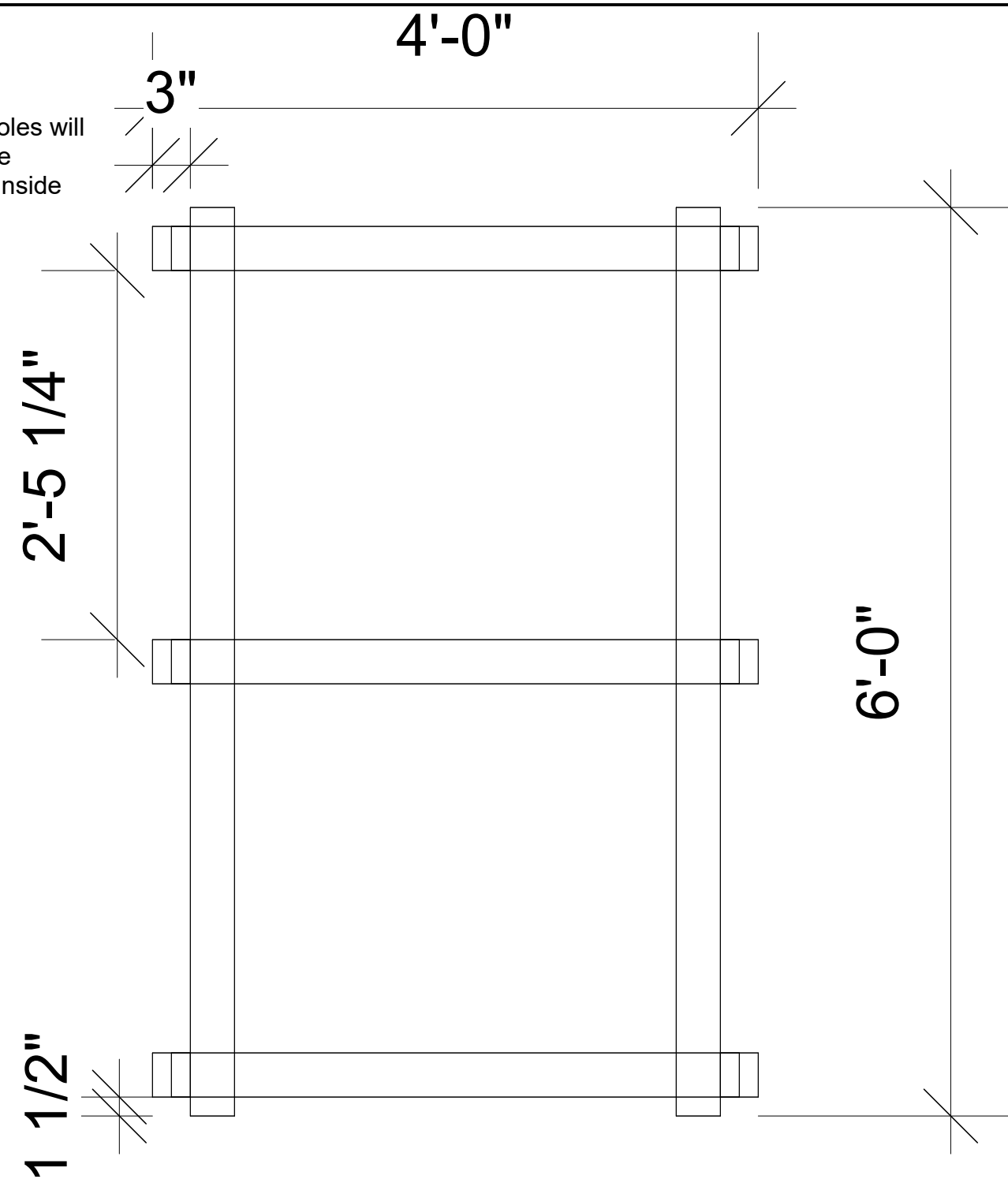


5 4x4 Flat
Scale: 1" = 1'-0"

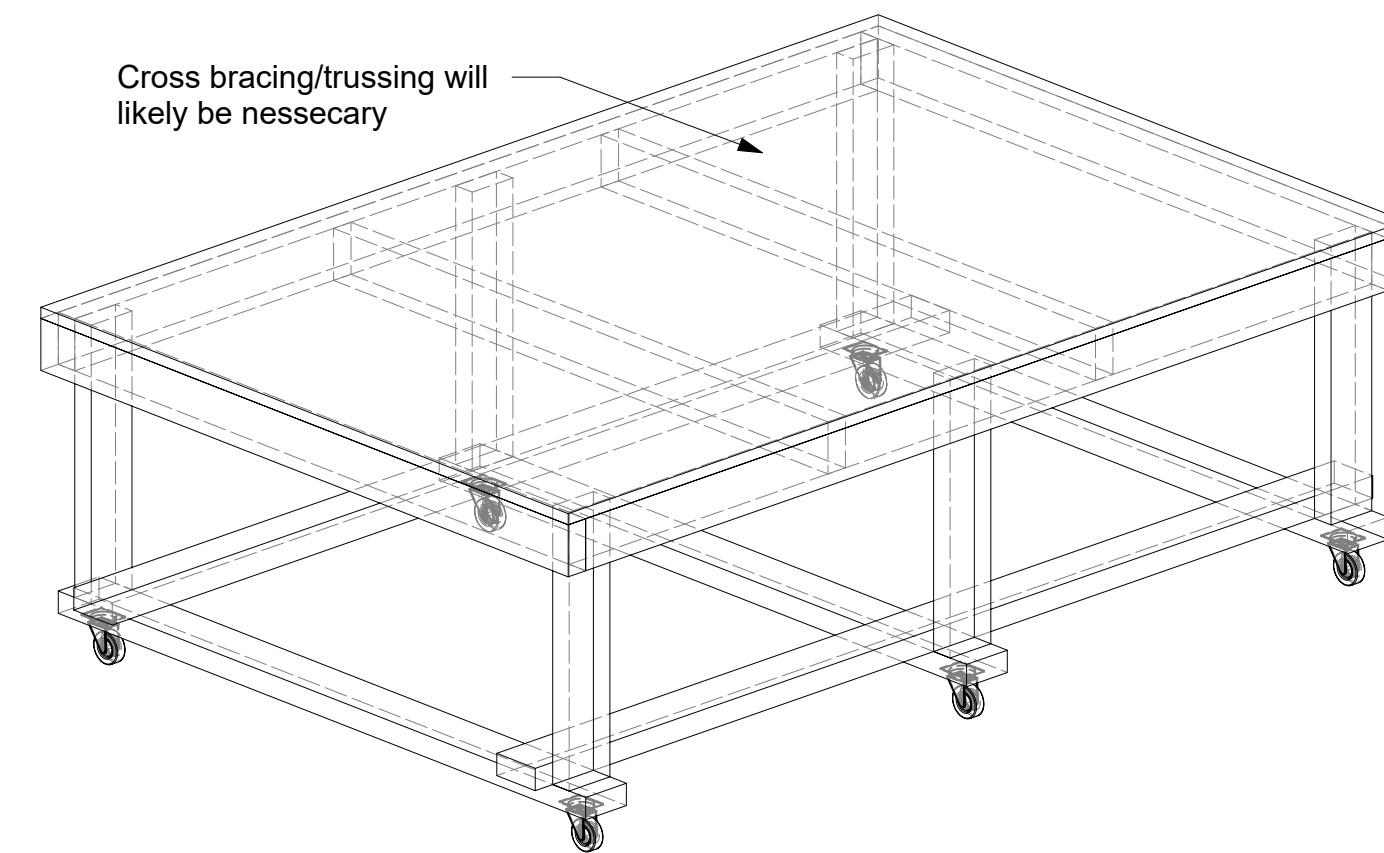


7 Unit Section
Scale: 1" = 1'-0"

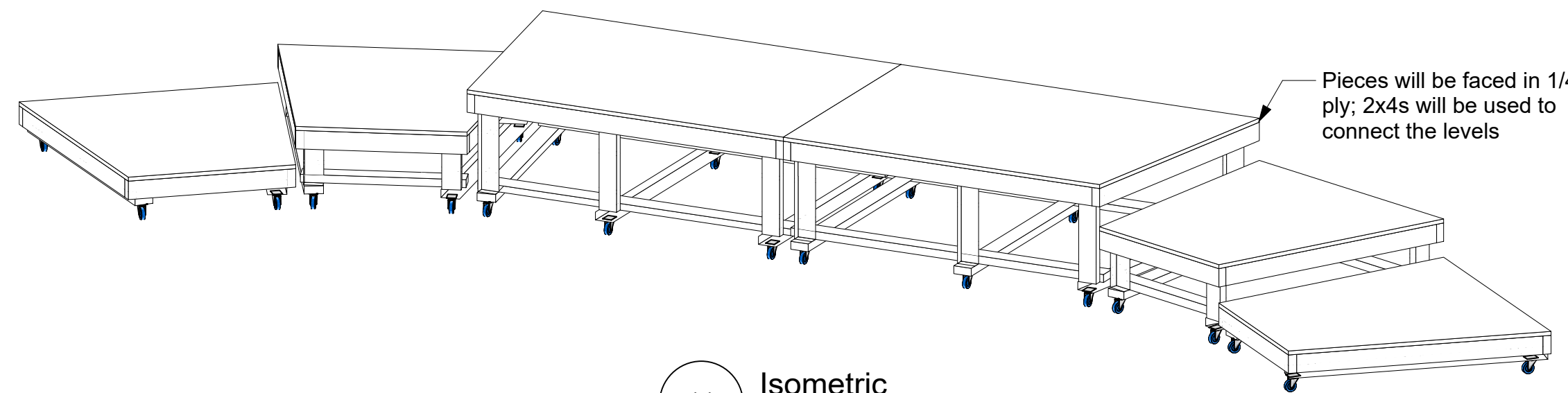
- General Notes
1. Face in 1/4" ply, leaving rolling gap at bottom.
 2. Attach wagon breaks where needed.
 3. Cross bracing/trussing will likely be nessecary.



6 4x4 Wagon
Scale: 1" = 1'-0"



8 Isometric
Scale: 1" = 1'-0"



11 Isometric
Scale: 1/2" = 1'-0"

KEY TO SYMBOLS

- 19° ETC SOURCE 4 575W
- 26° ETC SOURCE 4 575W
- 36° ETC SOURCE 4 575W
- 50° ETC SOURCE 4 750W
- 70° ETC SOURCE 4 750W
- ETC SOURCE 4 PAR WFL 750W
- ETC SOURCE 4 PAR MFL 750W

LEGEND

- LENS TUBE
- UNIT NUMBER
- CHANNEL

Legally Blonde

SCENIC DESIGNER

Harry Mullin
(412)334-6584
hnmullin@syr.edu

DISCLAIMER

THIS DRAWING REPRESENTS DESIGN INTENT AND CONCEPT. The designer and assistant designers are responsible for visual aspects of the production only, and all specifications provided relate solely to the appearance of the lighting and not to matters of electrical or structural soundness and/or safety. The implementation of this design must comply with the most stringent applicable federal and local safety and fire codes. The designer is not qualified to determine electrical or structural appropriateness of the design and will not assume responsibility for damages resulting through improper engineering and/or implementation in the handling of the elements of the lighting design. The designer agrees to make prompt correcting alterations to any specification found to be incompatible with proper safety precautions.

Syracuse University

FYP

DIRECTOR

Skylar Jones

LIGHTING DESIGNER

Harry Mullin

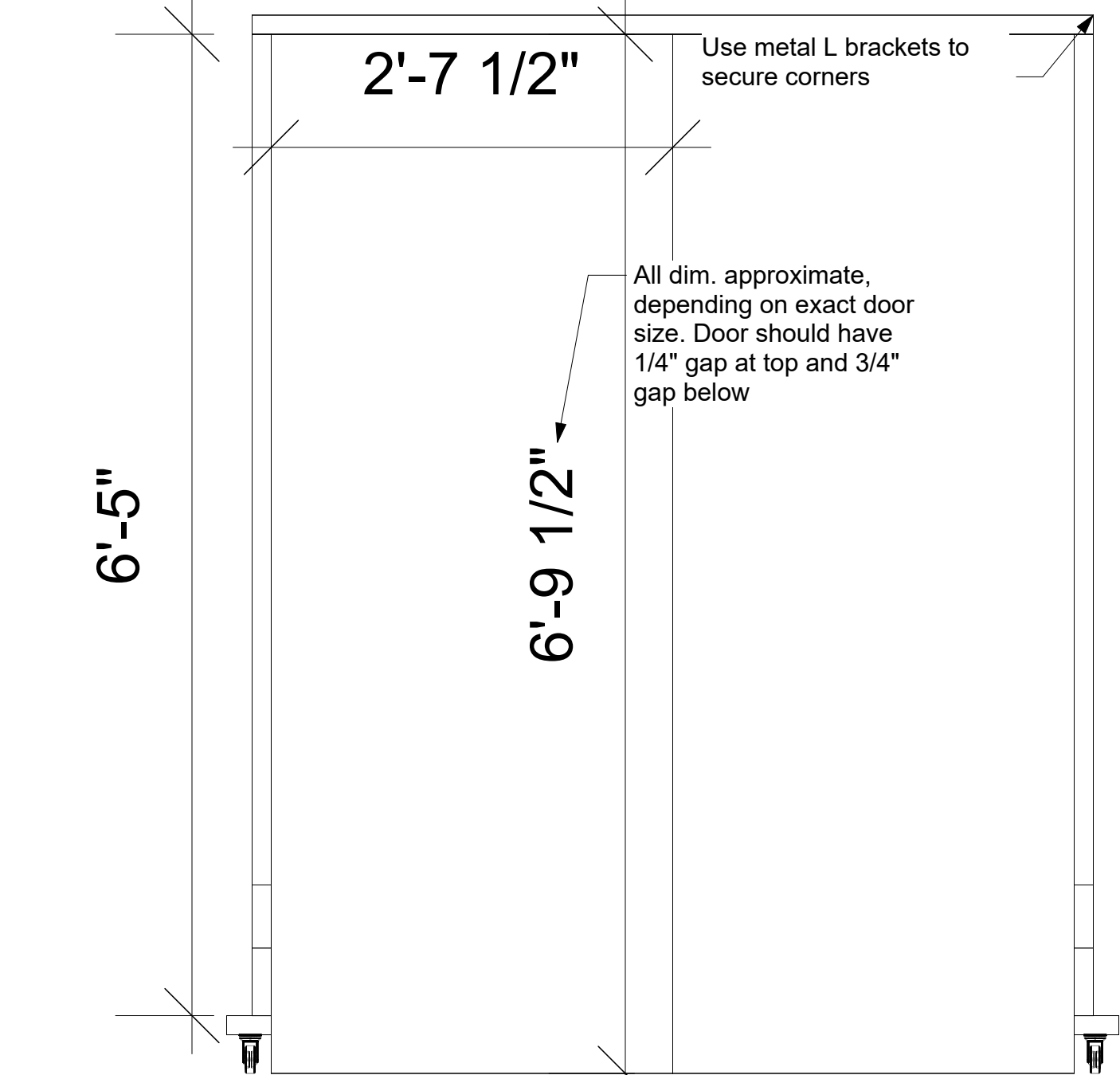
SCENIC DESIGNER

Harry Mullin

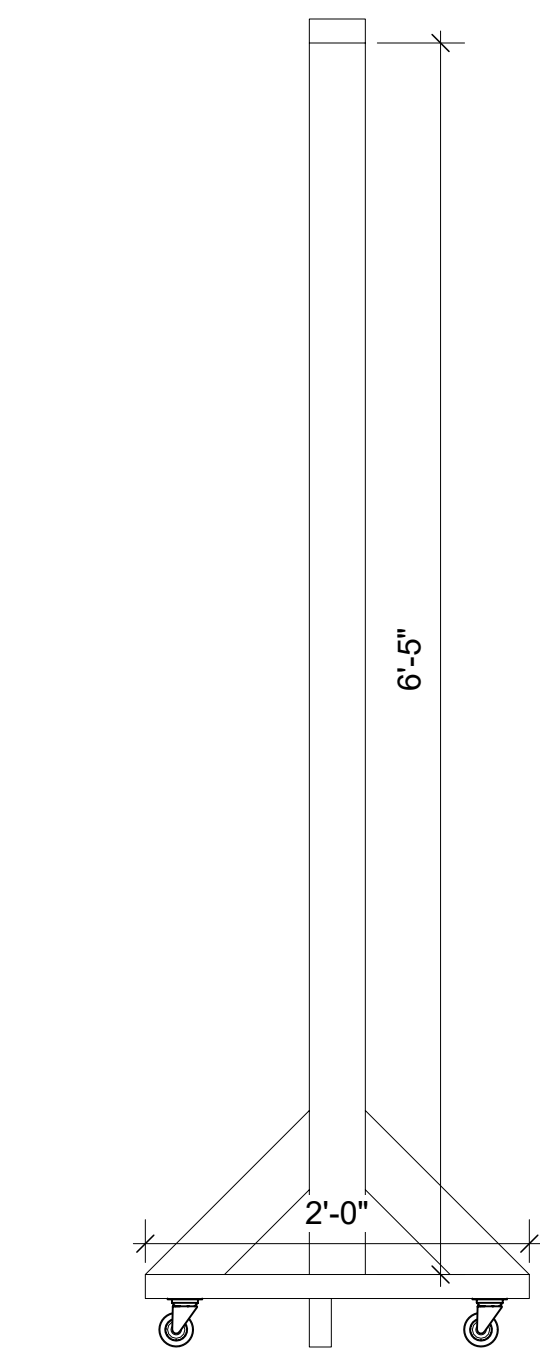
DRAWN BY
VERSION
DATE

HNM
Prelim
01/22/2025

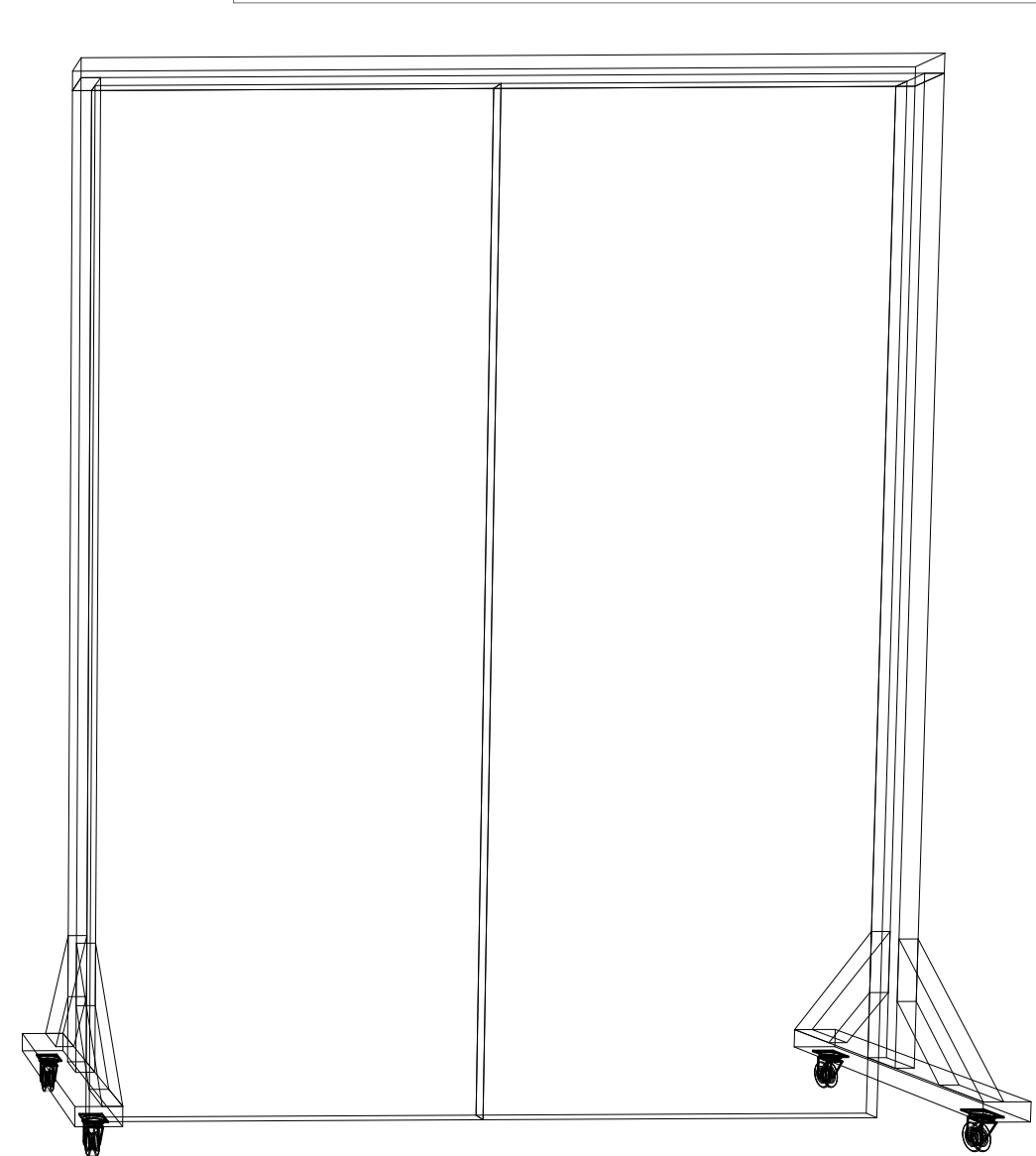
PLATE
1
OF 8



1 Door Elevation
Scale: 1" = 1'-0"



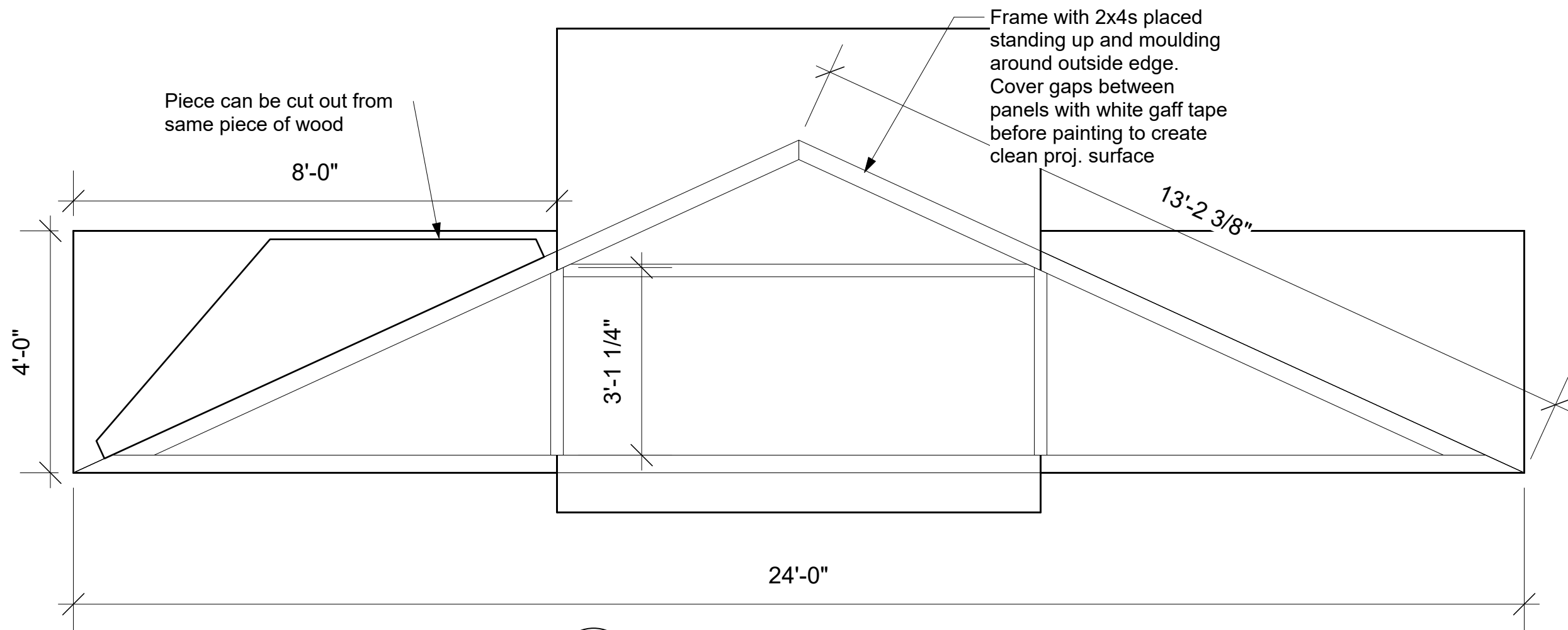
2 Section
Scale: 1" = 1'-0"



3 Isometric
Scale: 1/2" = 1'-0"

General Notes

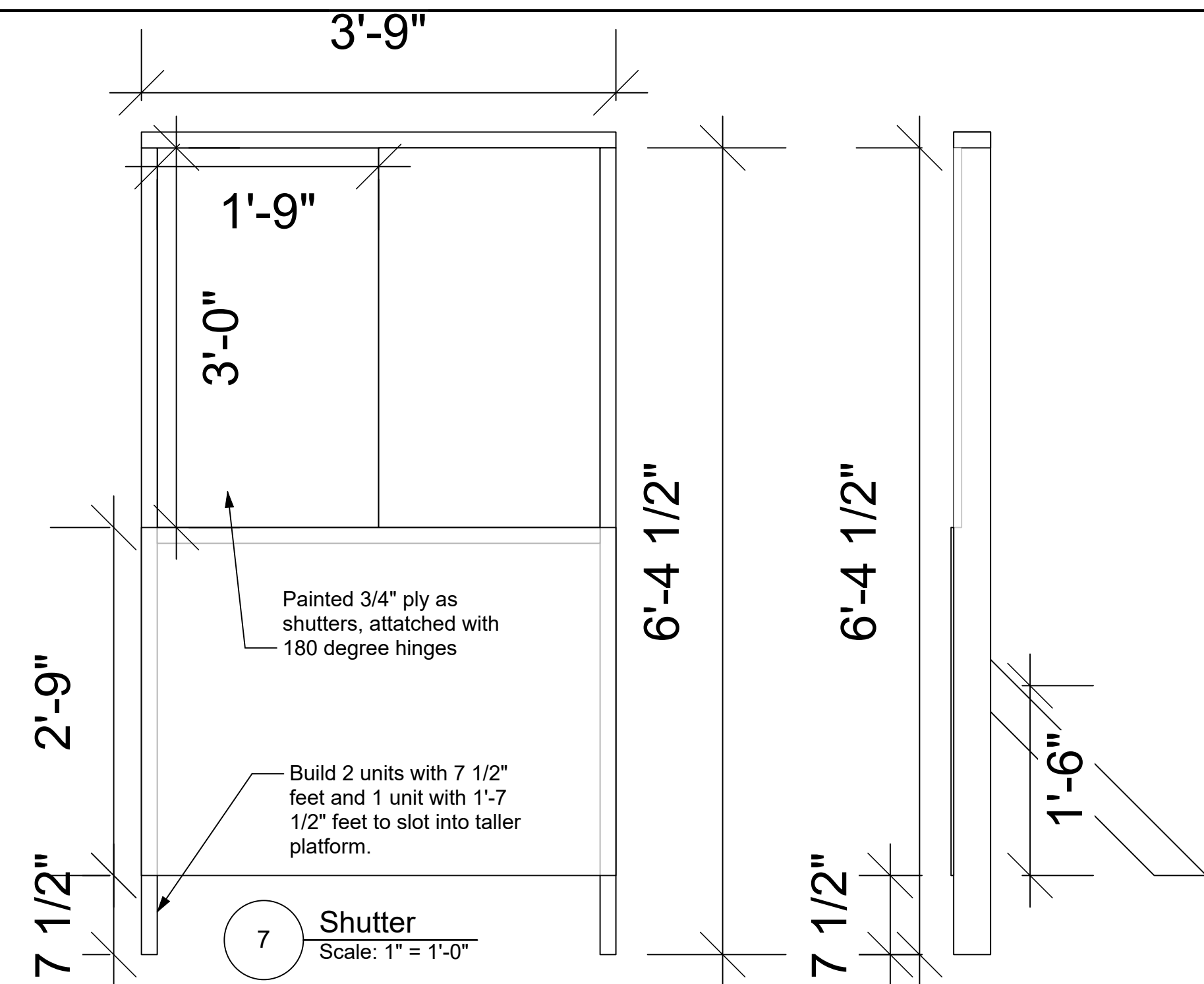
1. Door should have rolling gap of 3/4" and top gap of 1/4".
2. Two way hinges will be attached and ball-catches will be used in the upper beam.
3. All dim. are approximate, and design changes may be nessecary for stability of construction.



4 Pediment
Scale: 1/2" = 1'-0"

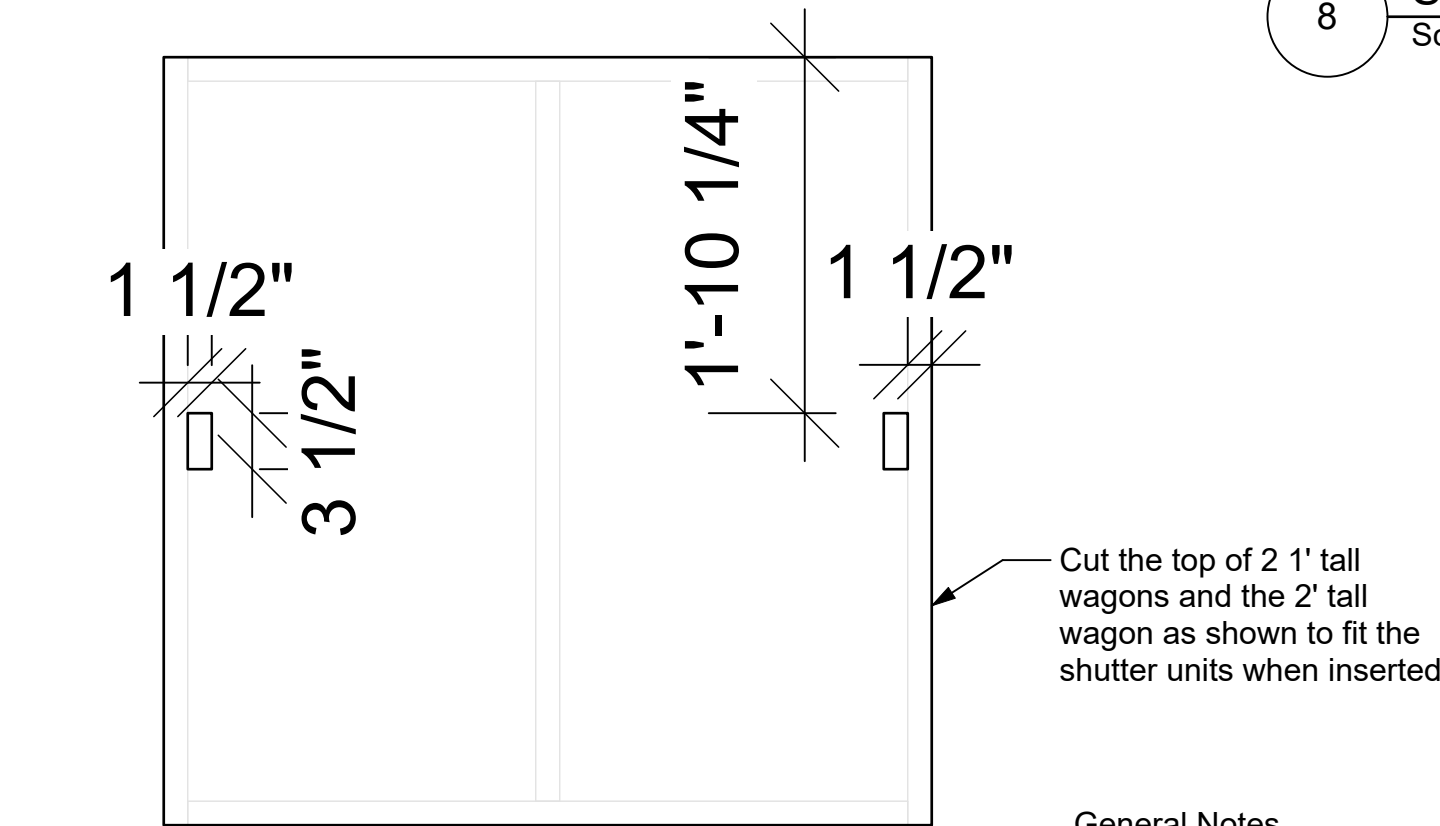
General Notes

1. 1/4" ply facing sheets shown in heavy lines.
2. Thin side of 2x4s where beams are shown.
3. Moulding around perimeter.
4. Tape over gaps between sheets with white gaff tape, then paint over tape for seamless proj. surface.
5. Top pentagon piece can be cut from remainder of a triangle piece (see left rect. of drawing 1)



7 Shutter
Scale: 1" = 1'-0"

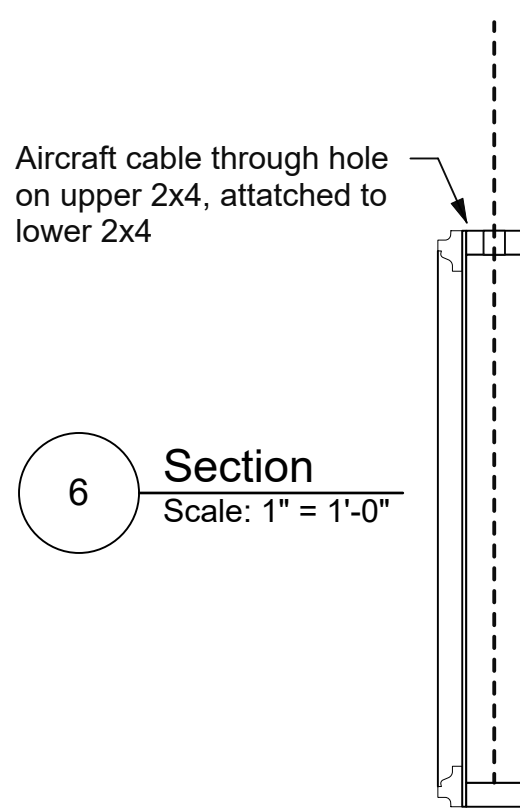
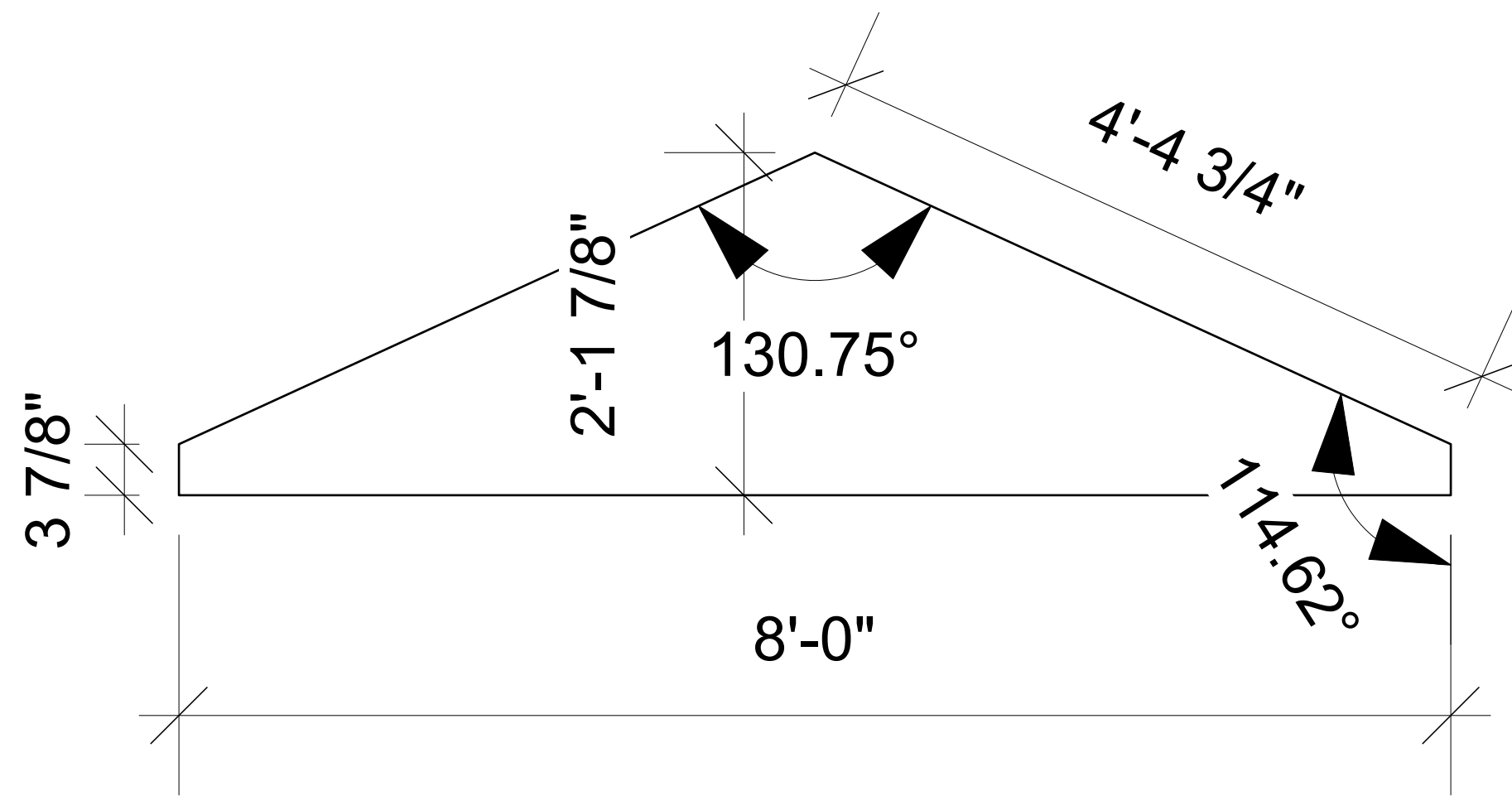
8 Section
Scale: 1" = 1'-0"



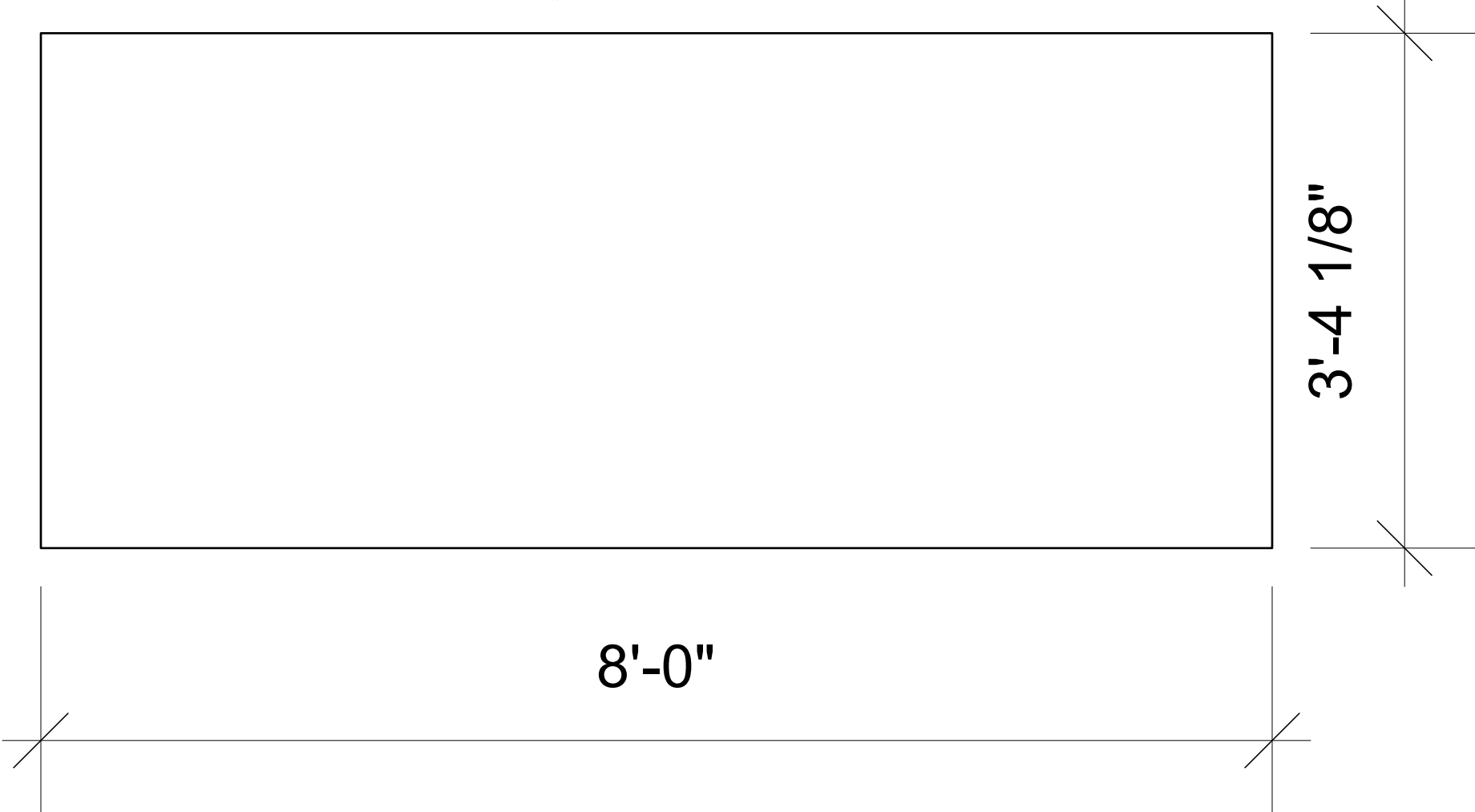
9 Platform Top
Scale: 1" = 1'-0"

General Notes

1. Build 3 units, one with an additional foot underneath to slot into taller platform



6 Section
Scale: 1" = 1'-0"



5 Wood Cutouts
Scale: 1" = 1'-0"

KEY TO SYMBOLS

- 19° ETC SOURCE 4 575W
- 26° ETC SOURCE 4 575W
- 36° ETC SOURCE 4 575W
- 50° ETC SOURCE 4 750W
- 70° ETC SOURCE 4 750W
- ETC SOURCE 4 PAR WFL 750W
- ETC SOURCE 4 PAR MFL 750W

LEGEND

- LENS TUBE
- UNIT NUMBER
- CHANNEL

Legally Blonde

SCENIC DESIGNER

Harry Mullin
(412)334-6584
hnmullin@syr.edu

DISCLAIMER

THIS DRAWING REPRESENTS DESIGN INTENT AND CONCEPT. The designer and assistant designers are responsible for visual aspects of the production only, and all specifications provided relate solely to the appearance of the lighting and not to matters of electrical or structural soundness and/or safety. The implementation of this design must comply with the most stringent applicable federal and local safety and fire codes. The designer is not qualified to determine electrical or structural appropriateness of the design and will not assume responsibility for damages resulting through improper engineering and/or implementation in the handling of the elements of the lighting design. The designer agrees to make prompt correcting alterations to any specification found to be incompatible with proper safety precautions.

Syracuse University

FYP

DIRECTOR

Skylar Jones

LIGHTING DESIGNER

Harry Mullin

SCENIC DESIGNER

Harry Mullin

DRAWN BY

VERSION

DATE

HNM

Prelim

01/22/2025

PLATE

2

OF 8