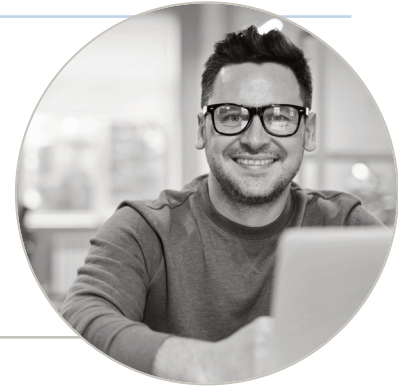


## CASE STUDY

### Building confidence, self-awareness and workplace effectiveness



**Client:** Radiographer/Medical communication professional

**Focus:** To gain confidence in the workplace and better understand his colleagues. To develop emotional intelligence.

**Setting:** Eight months of on-going coaching

#### The Challenge

Cameron came to coaching wanting to develop his confidence in the workplace, improve inter-departmental working and better understand how office politics really work.

He was navigating:

- Interpersonal dynamics with colleagues
- Uncertainty about how to show up professionally
- A desire to feel more confident and grounded
- A sense that he wanted to progress, but was not always sure how to

At the start of our work together, Cameron was highly reflective and thoughtful, but often very inward in how he processed situations. This sometimes meant that workplace challenges felt more personal, more complex, and more emotionally loaded than they needed to be.

#### The Approach

This has been a coaching relationship of around eight months, with sessions adapting and evolving as Cameron's needs developed. It's moved fluidly across personal reflection and emotional awareness, professional behaviour and communication and into career development with longer-term direction.

Rather than working to a fixed model, the sessions have been responsive and relational. Sometimes the focus has been on specific workplace situations. At other times, it has been about patterns of thinking, behaviour and reaction.

#### The Impact

One of the most significant shifts has been Cameron's growing capacity to see situations from a broader, more balanced perspective. Where challenges once felt highly personal or overwhelming, he is now much more able to pause and reflect, separate facts from assumptions, understand his own reactions and respond thoughtfully rather than reactively.

#### Key outcomes include:

- Increased confidence at work
- Stronger self-awareness and emotional insight
- Improved workplace relationships
- Greater clarity around career progression
- A grounded and resilient professional identity

The work has moved beyond confidence building, into something deeper: a strong reflective practice that Cameron can now carry forward independently into future roles and challenges.

#### Client Feedback:

*"The progress that we have made has been amazing. George is excellent at what he does and has an ability to explore a situation or problem in a way that makes you think about aspects that you have never considered before.*

*The questions he asks really make you think about what is being discussed and he is not afraid to get you to consider your own behaviour and reactions, even when it might be a bit uncomfortable.*

*He is kind, patient, thoughtful, honest and always willing to make time for you when you need it."*

If you're leading through change and need space to think clearly, let's talk.

  07970 660517 • [hello@plainthinking.co.uk](mailto:hello@plainthinking.co.uk) • [plainthinking.co.uk](http://plainthinking.co.uk)

*Leading the way to success*