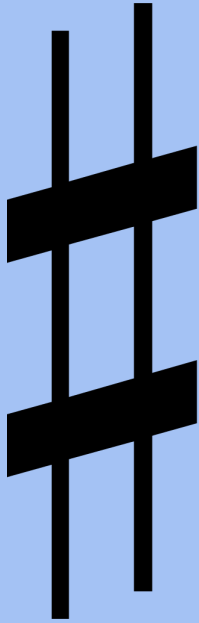


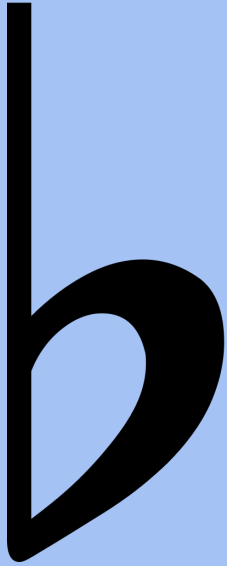
# *Sharps*



Looks like a hashtag

Sharps **raise** a pitch by  
a half step

# *Flats*



Looks like a fancy  
lowercase b

Flats **lower** a pitch by a  
half step

# *Key Signatures*

Tell us where do is

- Tells you which key a song is in (where Do is for a major key and where La is for a minor key)



- Group of sharps or flats just to the right of the clef

- Can be just one sharp or flat, or none at all!

- Sharps and flats change the pitch of the line or space they're on for the entire piece (with exceptions)

# *Finding Do*

We can look at the sharps and flats in the key signature to tell us what note is do.

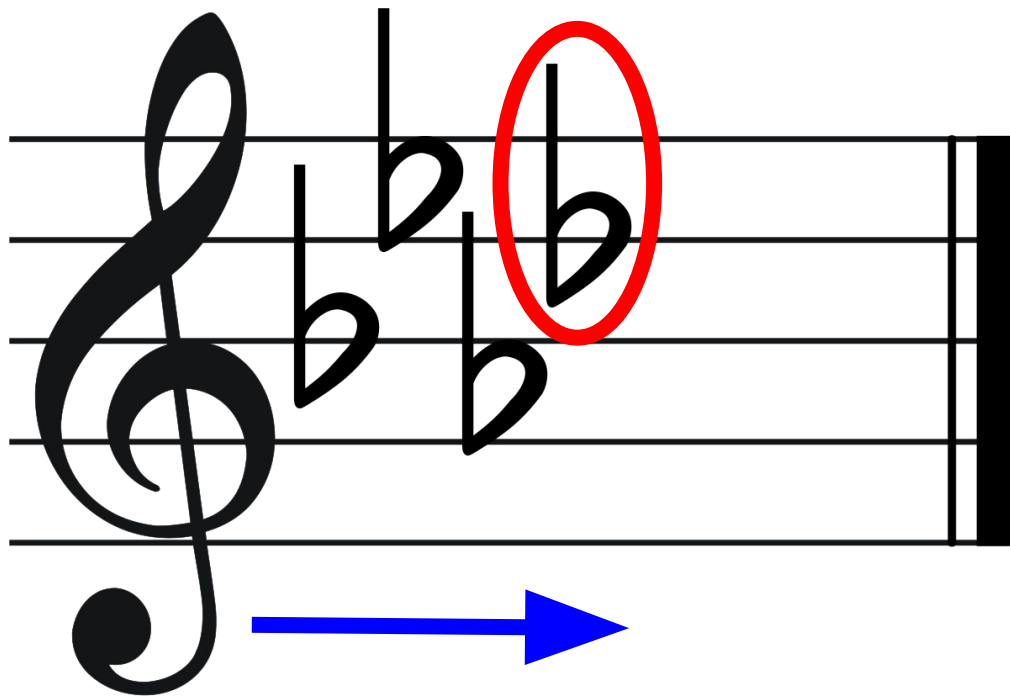
# *Flats*

What does a flat look like? Draw one in your journal.

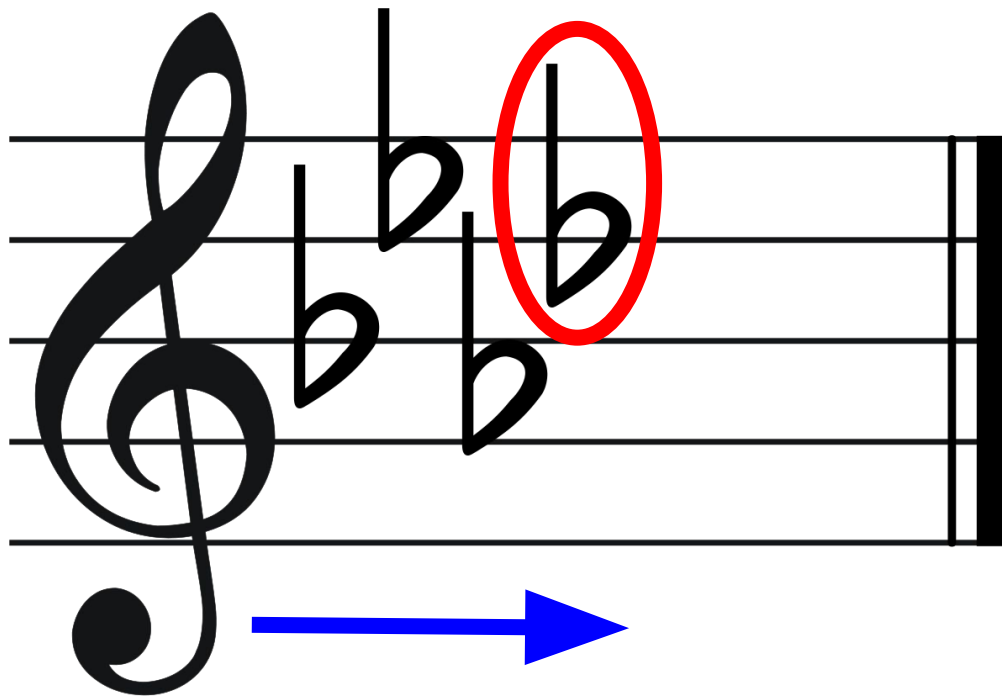
What does a flat do?

# *Flats*

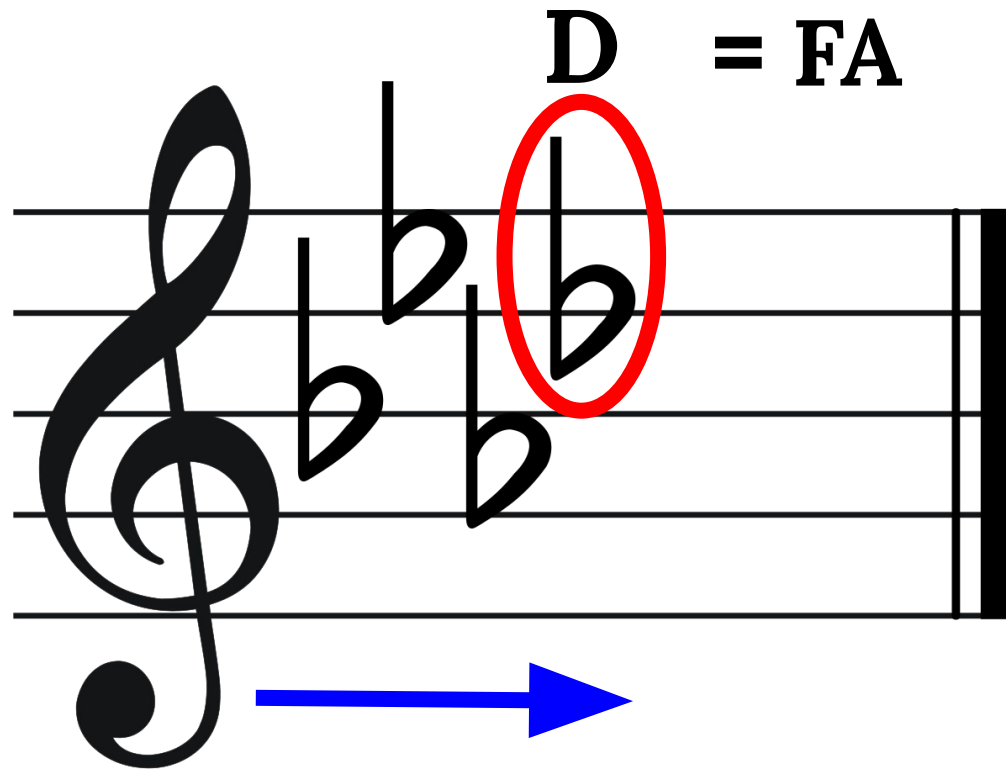
When there are flats in the key signature, **the farthest flat to the right is fa.**







What is the note name (A-G) of the line that the flat is on?



If we know that D = Fa, we can count down to do. What note (A-G) is do?

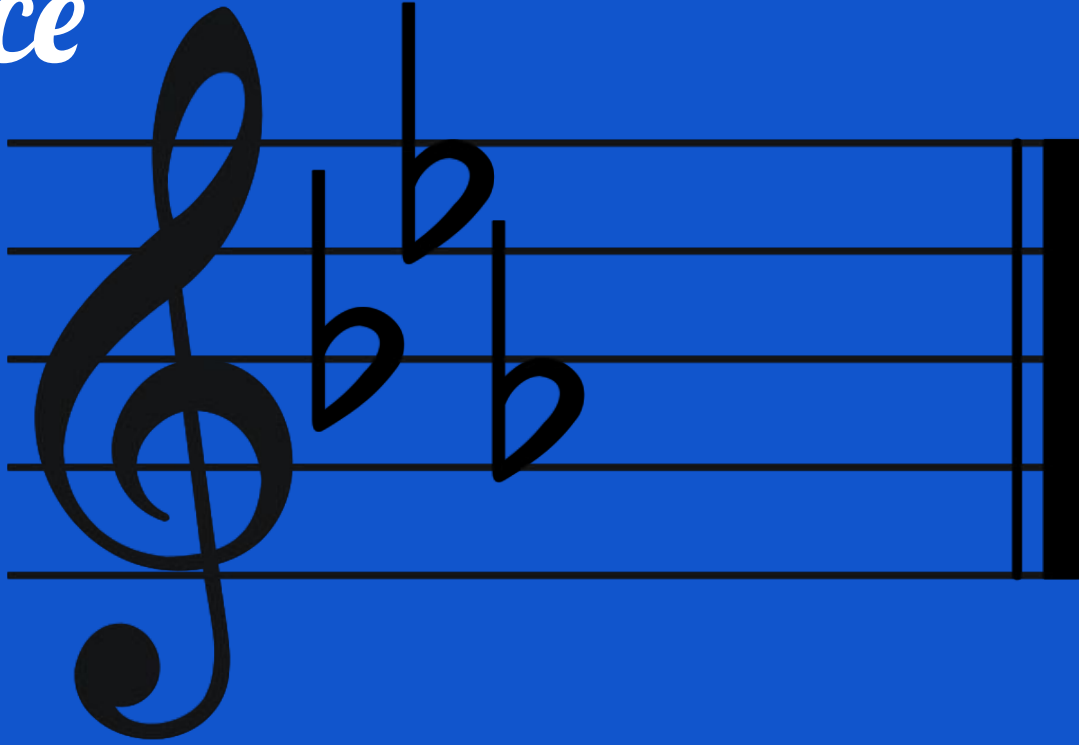
**D = FA**

Fa  
Mi  
Re  
Do

Ab = Do

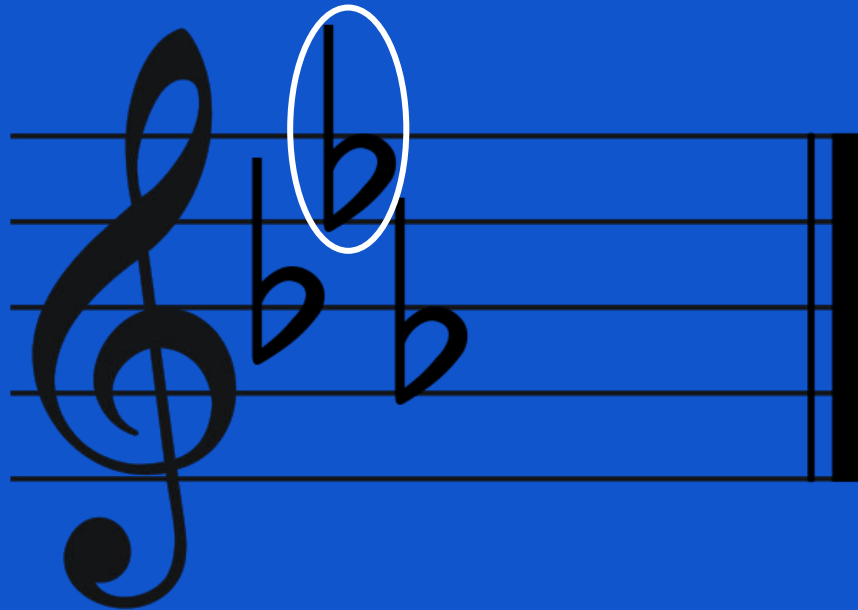
This means we are in Ab Major.

*Practice*



# *Trick*

The second flat back from the right is do.



# *Your Turn to Try!*

Once you complete the Canvas quiz, please close your laptop and put it underneath your seat.

# *Key Signatures*

How do we find do when there are flats in the key signature?

Practice (3). Draw do on your whiteboard.

# *Music Theory Moment*

When there are no sharps or flats in a key signature, what note is do?



# *Key Signatures*

What note is do when there are no sharps or flats in the key signature?

# *Key Signatures-Sharps*

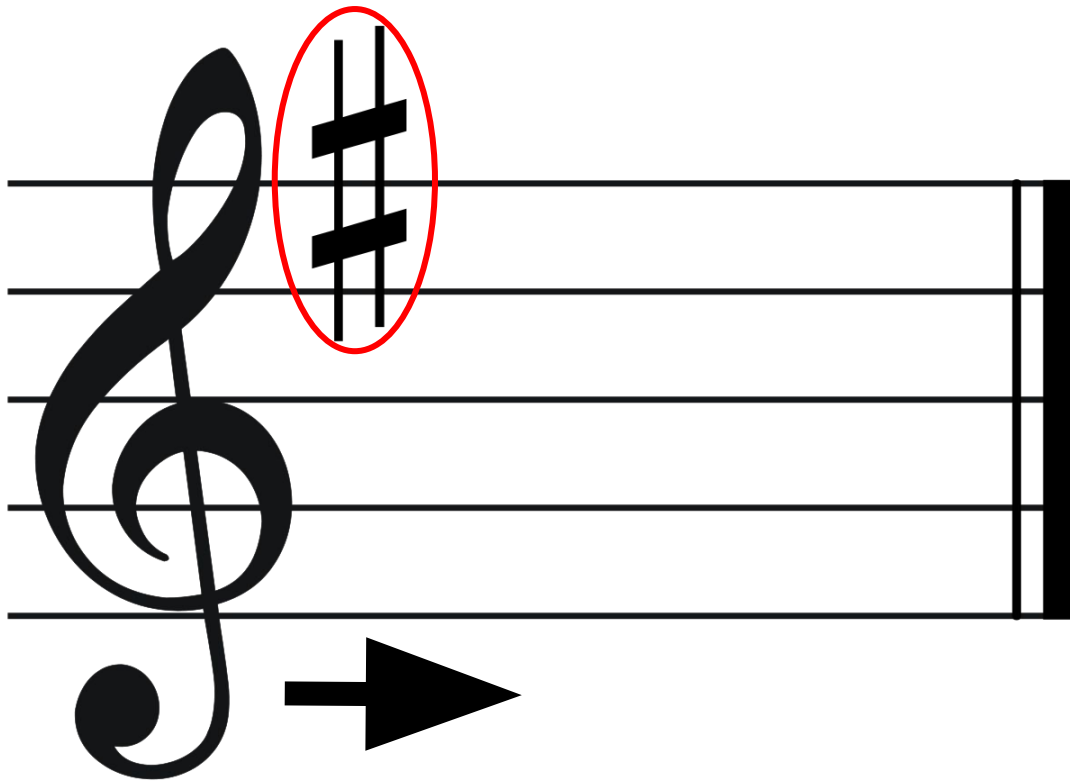
What does a sharp look like?

Draw one in your paper.

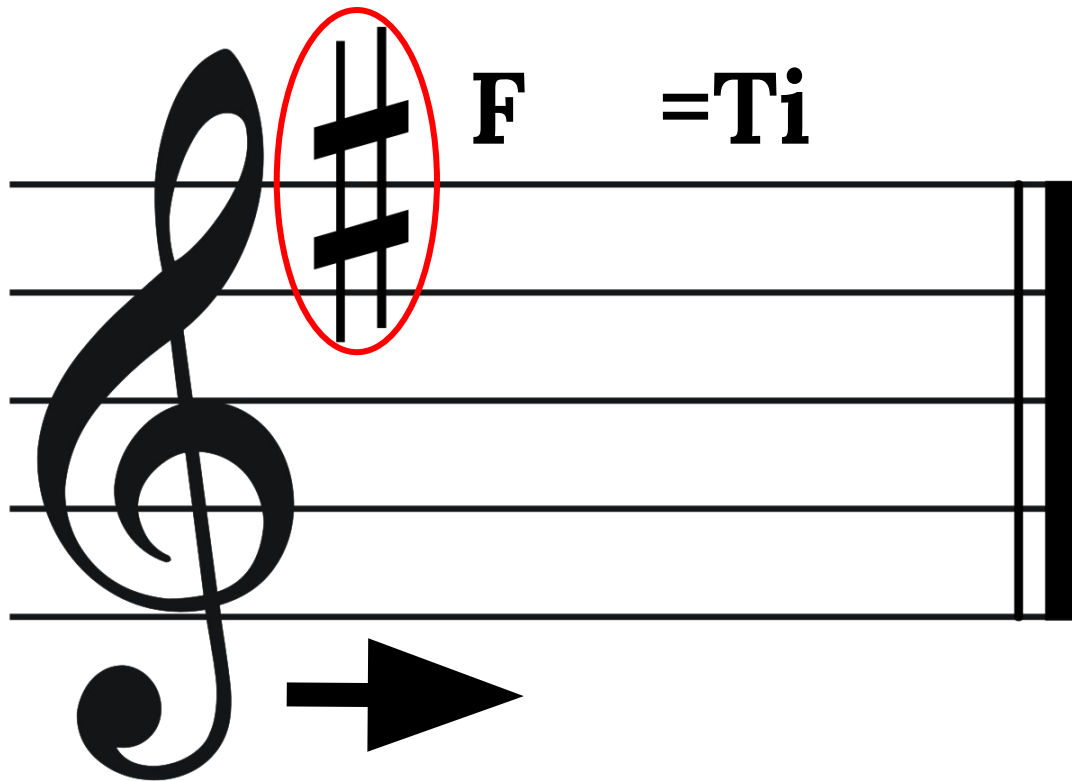
What does a sharp do to a note?

# *Finding Do*

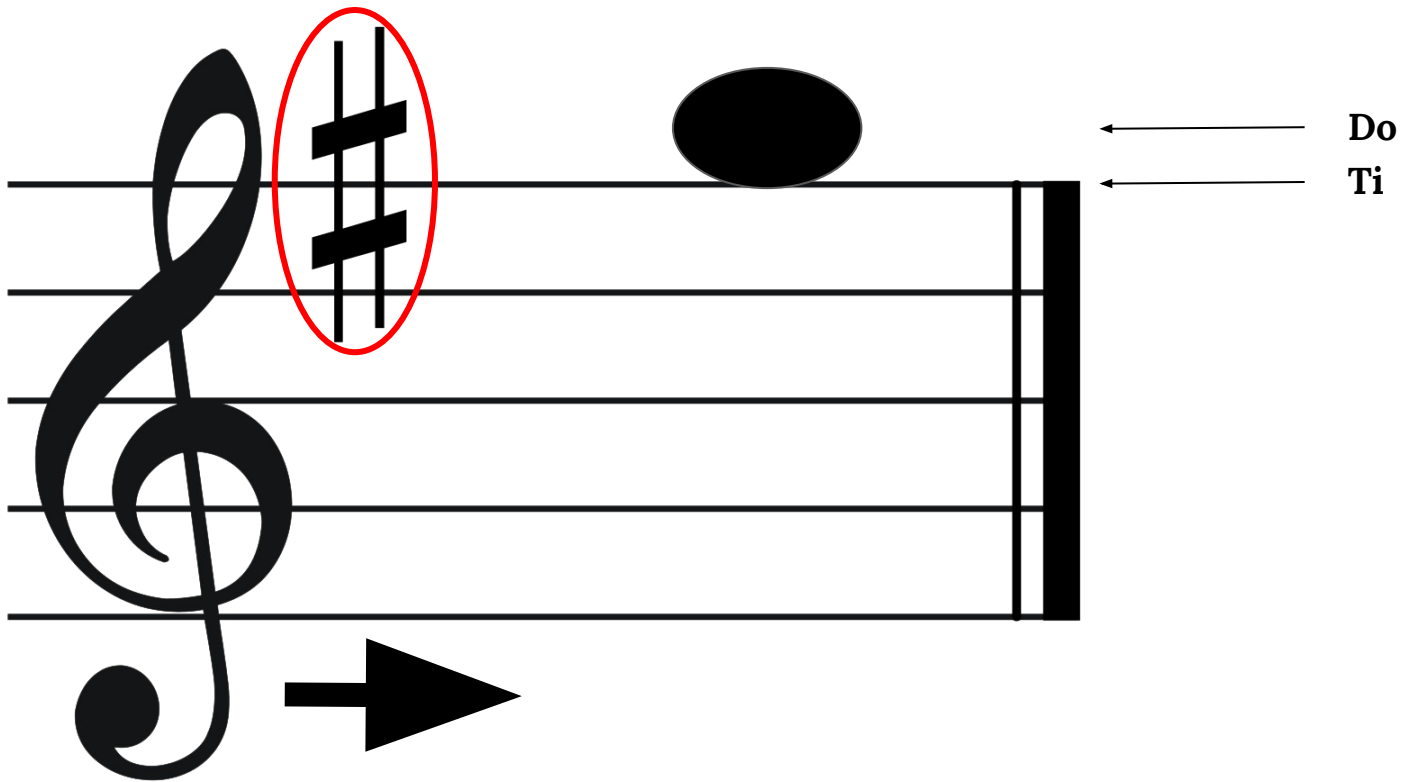
When there are sharps in the key signature,  
**the farthest sharp to the right is ti.**



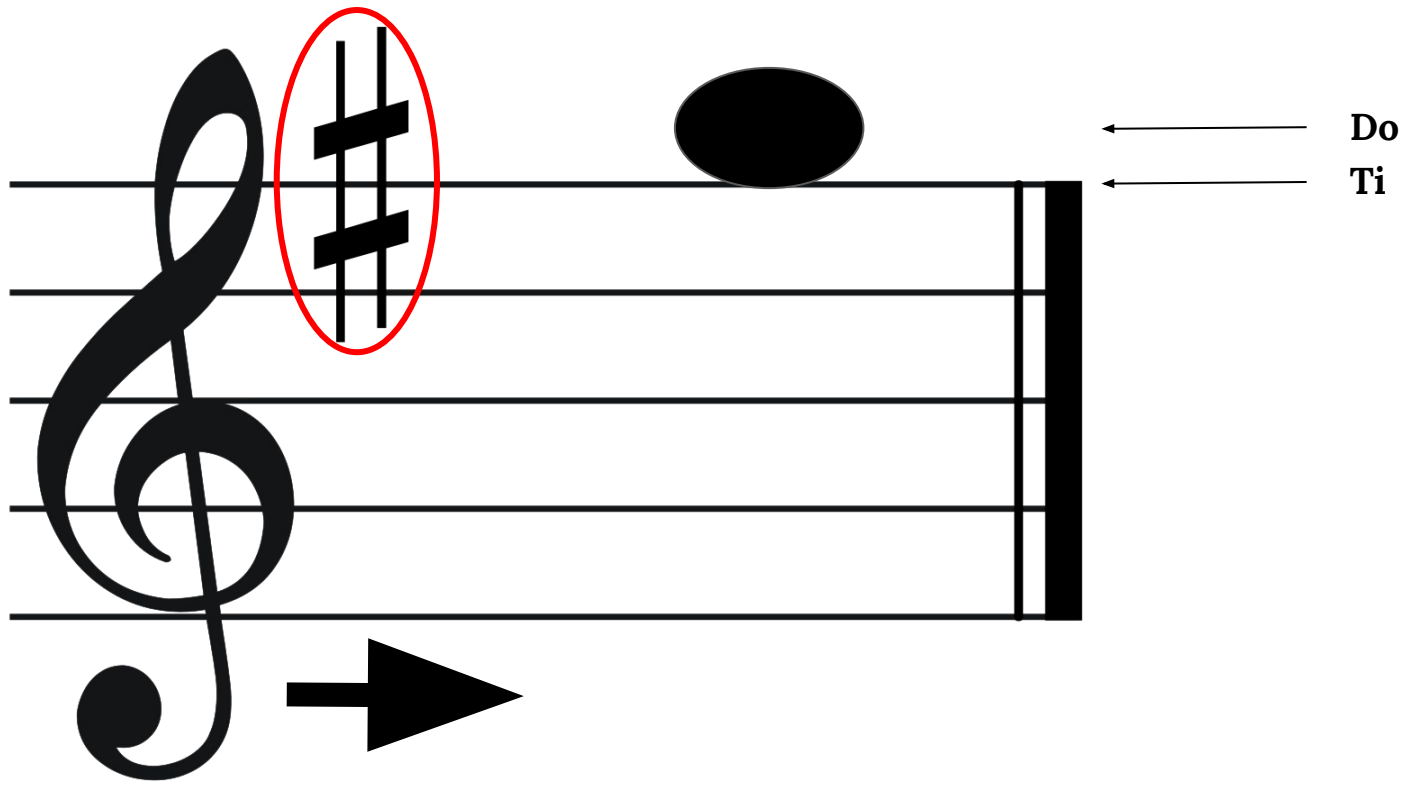
What note (A-G) is the sharp on?



What note (A-G) is the sharp on?



What note (A-G) is do?



G = Do, This means we're in G Major

# *Let's Practice*

When there are sharps in the key signature,  
**the farthest sharp to the right is ti.**



# *Key Signatures*

How do we find 'do' when there are flats in the key signature?

How does our 'do' relate to what major key we are in?

# *Key Signatures*

When there are no sharps and flats in the key signature, what note is do?

# *Key Signature Round Robin*

# *Key Signatures Review*

How do you find 'do' when there are sharps in the key signature?

How do you find 'do' when there are flats in the key signature?

What note is do when there are NO sharps or flats in the key signature?

# *Worksheet: Key Signatures*

This worksheet is due Monday, September 27th at the beginning of class.