

AI DATA BASE



Customized versions for all user options

Component	Estimated Cost	Notes
Data Pipeline + Ingestion	\$150k–\$350k	DICOM, video, EMR, device data, Kafka/MQTT, REST
AI Database / Data Lake	\$200k–\$450k	Object storage, time-series DB, vector DB, graph DB
Digital Twin Engine	\$300k–\$700k	3D models, surgical models, real-time updates
AI/ML Models	\$250k–\$600k	CV segmentation, surgical planning, embeddings
Visualization Layer	\$150k–\$350k	3D dashboards, Vision Pro, OR displays
DevOps + Security + Compliance	\$150k–\$350k	HIPAA, SOC2, cloud infra, CI/CD

Early Investor AI Database Program

Exclusive Opportunities for Early Participants

(Contact mhkembel@outlook.com take advantage of our Platform.

Works with Digital Twin by viewing images.

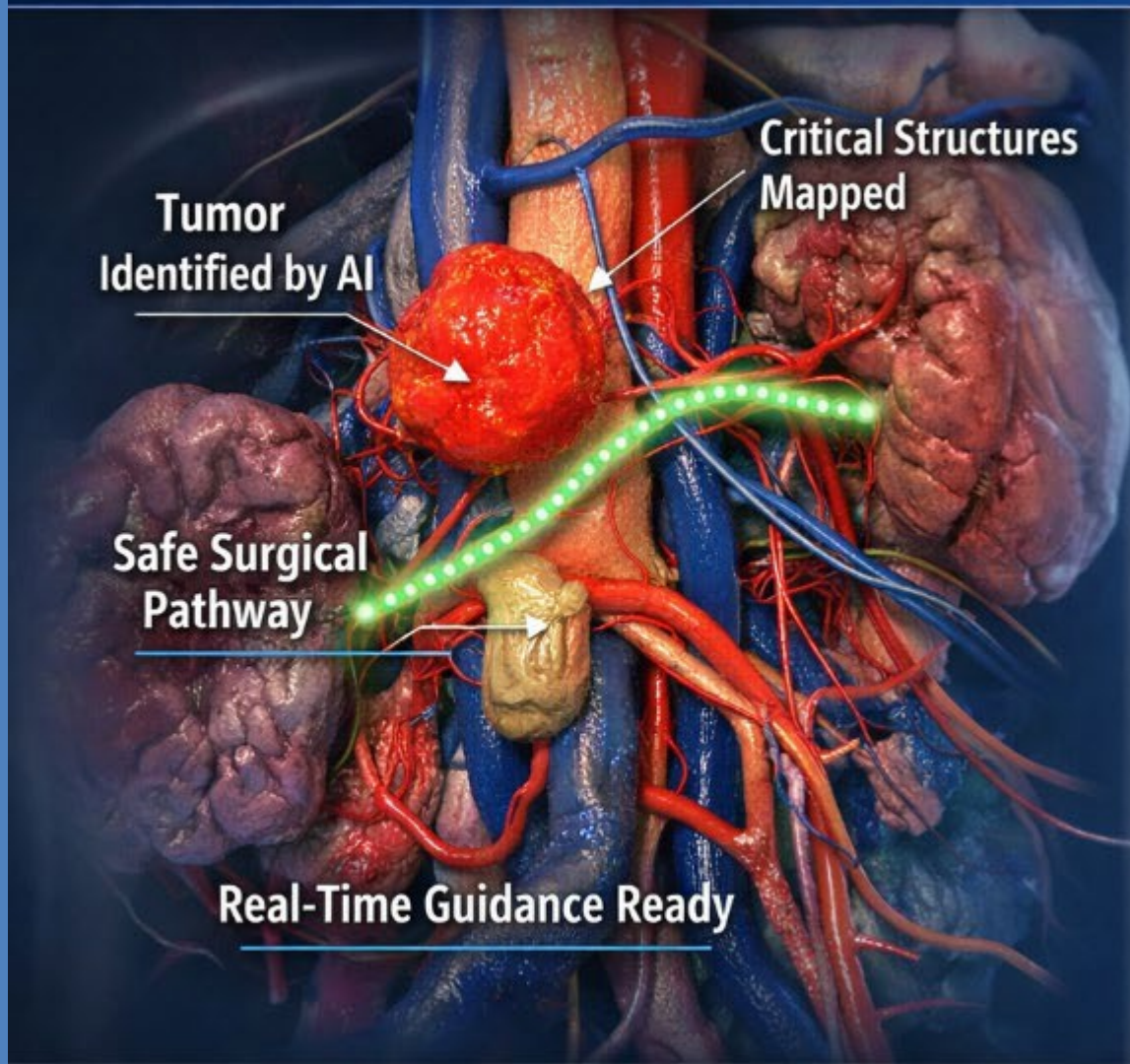
Stores: This means the system can store:

- CT, MRI, X-ray, DICOM series
- 3D reconstructions
- Surgical videos
- Rendered digital twin snapshots
- Simulation outputs
- AR/VR-ready 3D assets

These are the core inputs for a medical digital twin.

- Invest in the AI Database and get the GS-AI Core Digital Twin Platform TM in a package deal with subscription.
- This benefit is achieved through enhanced workflow efficiency and the integration of future Digital Twin technologies.
- Founding Partner Status
- Gain influence over product direction and enjoy benefits associated with early expansion.

AI Digital Twin: *Transforming Surgical Precision*



What You're Seeing:

- AI-generated 3D model from CT & MRI data
- Tumors and critical anatomy identified
- Pre-op planning with precise pathways
- Guidance during surgery in real time
- Reduced risk, improved outcomes

Why This Matters

- Higher Surgical Accuracy
- Reduced Complications
- Faster Procedures
- Scalable Across Specialties

We are not showing data—we are showing the surgery before it happens.

Two Powerful Revenue Engines

1. AI Digital Twin Database

- Hospital data storage + AI processing
- Recurring SaaS revenue
- Entry point for customers

2. Digital Twin Platform

- Per-surgery or subscription pricing
- High-margin clinical product
- An AI Database handles **structured + unstructured + time-series + vector embeddings** in one place.

Bundle Strategy:

- Discount when hospitals adopt both
- Database drives adoption → Twin drives revenue

 This creates a **data moat + recurring revenue flywheel**

Healthcare Data is Broken and Fragmented

Hospitals generate massive amounts of data:

- CT / MRI imaging
- Surgical video
- Patient monitoring
- Device telemetry

But today:

- Systems don't talk to each other
- Data is not used in real-time
- No system learns from every surgery

Result:

Missed insights, inconsistent outcomes, and preventable errors.

Cancer is the Entry Point — and the Breakthrough

Your platform starts with **high-value cancer use cases**:

- Early tumor detection using AI imaging
- Tumor margin precision during surgery
- Risk prediction before procedures
- Personalized surgical planning

Why this wins:

- Cancer = highest urgency + funding priority
- Immediate ROI for hospitals
- Strong FDA pathway (decision support first)

👉 “We start with cancer to get a faster cure but build the system that powers all surgery.”

Why AI DB is Different from Every Competitor

Competitors (Typical Digital Twins):

- Static models
- Single-use (planning only)
- Limited data integration
- No continuous learning

AI DB Platform (Your Advantage):

1. Full Data Integration

- Imaging + video + telemetry + EHR all connected

2. Continuous Learning System

- Every surgery improves the platform

3. AI + Workflow Combined

- Not just analysis → real surgical guidance

4. Database + Platform Strategy

- Database = data moat
- Digital Twin = revenue engine

5. Multi-Industry Expansion

- Same core platform applies to aerospace, manufacturing, energy

👉 You're not competing with tools — you're building the **category**

GS AI CORE

HORIZONTAL DIGITAL TWIN OPERATING SYSTEM



HEALTHCARE-FIRST PLATFORM WITH MODULAR INDUSTRY EXPANSION

Massive Market + Expansion Potential

- Healthcare AI + Surgical Tech = \$100B+ market
- Every hospital = potential customer
- Every surgery = recurring revenue

Expansion Strategy:

- Start with cancer
- Expand to all surgical specialties
- Scale globally

Future Licensing:

- Aerospace
- Manufacturing
- Energy
- Automotive

Surgery Specialty for Hospitals	Assigned Subscription Cost
Neurosurgery	\$200,000 USD
Orthopedics	\$190,000 USD
Ophthalmology	\$180,000 USD
Cardiothoracic Surgery	\$170,000 USD
Vascular Surgery	\$160,000 USD
Cancer	\$120,000 USD
Gastrointestinal Surgery	\$120,000 USD
Urology	\$120,000 USD

👉 Same platform → multiple trillion-dollar industries

Mark Kembel — Platform Builder

- Microsoft (Windows 95 team)
 - Worked on one of the most important OS launches in history
 - Produced engineering reports reviewed by Bill Gates
 - Microsoft “Ship-It” Award
- Founder, InterTest.com
 - Built multi-million-dollar software company (~\$7M revenue)
 - Clients included Microsoft & Boeing
 - Scaled with lean team and enterprise customers
- AI + Platform Architect
 - Designed AI DB Core Digital Twin Platform
 - Focused on building a new category: Surgical Intelligence Systems
- [linkedin.com/in/mark-kembel-84007377](https://www.linkedin.com/in/mark-kembel-84007377)

👉 “I build platforms that become industries.”





We are planning to raise \$40 million to quickly expand our business. We currently have another \$50 million coming in the form of a loan for which was passed by the bank's board.

Investors will be rewarded in the stock price once we accomplish our expansion by owning most of the \$40 million in stock.

Email markkembel@gmail.com for more information on the stock plan.

Medical Team & Advisors

Ronald G. Rehn

Doctor of Health Administration, MPA Chief

Administrative Officer, Administration

rrehn3@gmail.com



Dr Edward Johnson

Chief Medical Officer for Providence Steven County