

FALL SEMESTER 2025

NIULPE Prep II and I

13 weeks
5PM—8PM

Date: Every Monday beginning Sept. 8, 2025

Place: 1001 E ENTRY DR, 15216

Instructor: Carl A. Luisi

Tuition:

Education Fund Members – \$0.00

Local 95 Members - \$550.00

Non-Members - \$835.00

Books and Materials: (Not covered by the Ed. Fund.)

ATP Stationary Engineering 5th Edition

BOOK = \$145.00



Plumbing I

13 weeks
5PM—8PM

Date: Every Monday beginning Sept. 8, 2025

Place: 1001 E ENTRY DRIVE, 15216

Instructor: Dave Lubawy

Tuition:

Education Fund Members – \$0.00

Local 95 Members - \$550.00

Non-Members - \$835.00

Consumables fee = \$70.00 (not covered by the Ed. Fund)

BOOK=\$127.00

STUDY GUIDE=\$42.00

LIMITED TO 12 STUDENTS



DDC Digital Controls I

13 weeks
5PM—8PM

LIMITED TO 18 STUDENTS

Date: Every Monday beginning Sept. 8, 2025

Place: Pittsburgh Air Systems

208 Bilmar Dr, Pittsburgh, PA 15205

Instructor: Jason Konley

A windows based laptop is highly recommended for the hands on programming

Tuition:

Education Fund Members – \$0.00

Local 95 Members - \$550.00

Non-Members - \$835.00

Books and Materials: (Not covered by the Ed. Fund.)

In House Hand outs and materials: \$25.00



Industrial Electric I

13 weeks
5PM—8PM

Date: Every Monday beginning Sept 8, 2025

Place: 1001 E ENTRY DR, 15216

Instructor: Jerry Myers

Tuition:

Education Fund Members – \$0.00

Local 95 Members - \$550.00

Non-Members - \$835.00

Books and Materials: (Not covered by the Ed. Fund.)

Electrical Principles and Practices 4TH Edition

BOOK=\$107.00

STUDY GUIDE= \$43.00



FALL SEMESTER 2025

Chief Engineer Certificate

12 weeks
4PM—7PM

Date: Every Tuesday beginning Sept. 9, 2025

Place: 1001 E ENTRY DRIVE, 15216

Instructor: Gary Schwartz

Tuition:

Education Fund Members – \$0.00
Local 95 Members - \$440.00
Non-Members - \$774.00

Books and Materials: (Not covered by the Ed. Fund.)

House Publication

BOOK = \$40.00



High Pressure Steam Boiler

13 weeks
4PM—7PM

Date: Every Tuesday beginning Sept. 9, 2025

Place: 1001 E ENTRY DRIVE, 15216

Instructor: Mike Petrone

Tuition:

Education Fund Members – \$0.00
Local 95 Members - \$550.00
Non-Members - \$835.00

Books and Materials: (Not covered by the Ed. Fund.)

ATP High Pressure Boilers 6th Edition

BOOK = \$136.00

STUDY GUIDE = \$33.00



HVAC II

13 weeks
5PM—8:00 PM

Date: Every Tuesday beginning Sept. 9, 2025

Place: 1001 E ENTRY DRIVE, 15216

Instructor: Stephen J. Flaherty

Tuition:

Education Fund Members – \$0.00
Local 95 Members - \$550.00
Non-Members - \$835.00

Consumables fee \$70.00 not covered by the Ed. Fund

*Must have completed HVAC I



Basic Electric I

13 weeks
5PM—8PM

Date: Every Tuesday beginning Sept 9, 2025

Place: 1001 E ENTRY DR, 15216

Instructor: Dan Kollar

LIMITED TO 12 STUDENTS

Tuition:

Education Fund Members – \$0.00
Local 95 Members - \$550.00
Non-Members - \$835.00

Books and Materials: (Not covered by the Ed. Fund.)

Consumables fee = \$70.00

ATP Electrical Principles and Practices 4th Edition

BOOK = \$115.00

STUDY GUIDE = \$49.00

FALL SEMESTER 2025

Industrial Maintenance II

13 weeks
5PM—8PM

Date: Every Wednesday beginning Sept. 10, 2025

Place: 1001 E ENTRY DRIVE, 15216

Instructor: Kris Heidkamp

Tuition:

Education Fund Members – \$0.00

Local 95 Members - \$550.00

Non-Members - \$835.00

*Must have completed Industrial Maint. I



Commercial Kitchens

13 weeks
5PM—8PM

Date: Every Wednesday beginning Sept. 10, 2025

Place: 1001 E ENTRY DRIVE, 15216

Instructor: Victor Ellis

Tuition:

Education Fund Members – \$0.00

Local 95 Members - \$550.00

Non-Members - \$835.00

Books and Materials: (Not covered by the Ed. Fund.)

BOOK= 45.00



HVAC II

13 weeks
5PM—8:00 PM

Date: Every Thursday beginning Sept. 11, 2025

Place: 1001 E ENTRY DRIVE, 15216

Instructor: Kevin Kehren

Tuition:

Education Fund Members – \$0.00

Local 95 Members - \$550.00

Non-Members - \$835.00

Fees:

Consumables fee \$70.00 not covered by the Ed. Fund

*Must have completed HVAC I



Solid State Electronics I

13 weeks
5PM—8PM

Date: Every Thursday beginning Sept 11, 2025

Place: 1001 E ENTRY DRIVE, 15216

Instructor: Dan Kollar

Tuition:

Education Fund Members – \$0.00

Local 95 Members - \$550.00

Non-Members - \$835.00

Books and Materials: (Not covered by the Ed. Fund.)

Consumables fee= \$30.00

Solid State Devices and Systems 4th Edition

BOOK= \$87.00

STUDY GUIDE= \$37.00

LIMIT 10 STUDENTS!!



FALL SEMESTER 2025

General Maintenance & Carpentry

13 weeks
5PM—8PM

Date: Every Thursday beginning Sept 11, 2025

Place: 1001 E ENTRY DRIVE, 15216

Instructor: Jim Minert

Tuition:

Education Fund Members – \$0.00

Local 95 Members - \$550.00

Non-Members - \$835.00

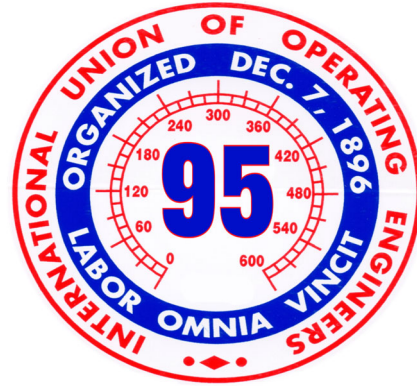
Books and Materials: (Not covered by the Ed. Fund.)

ATP Carpentry 7th Edition

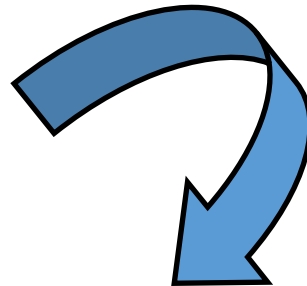
BOOK= \$ 143.00

STUDY GUIDE= \$49.00

LIMITED TO 14 STUDENTS



SEE BELOW FOR OUR 4 HOUR SEMINARS THIS MONTH!!



PUMP FUNDAMENTALS & OVERVIEW

4 Contact Hours
8AM—NOON

Date: September 11, 2025

Place: 1001 E ENTRY DRIVE, 15216

Instructor: Mike Hirsh

Tuition:

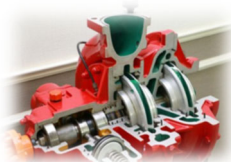
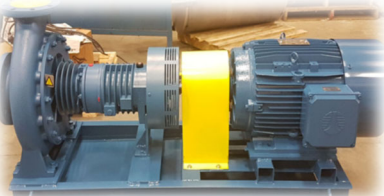
Education Fund Members – \$0.00

Local 95 Members - \$200.00

Non-Members - \$275.00

Active Retirees—\$0.00

Approved for Stationary Engineer License



SLOAN FLUSH VALVES & SENSORS

4 Contact Hours
4PM—8PM

Date: September 16, 2025

Place: 1001 E ENTRY DRIVE, 15216

Instructor: SLOAN

Tuition:

Education Fund Members – \$0.00

Local 95 Members - \$200.00

Non-Members - \$275.00

Active Retirees—\$0.00

Approved for Stationary Engineer License



FALL SEMESTER 2025

CERTIFICATES CAN TAKE UP TO 3 **BUSINESS DAYS TO RECEIVE!**

*All class confirmations and certificates will be sent to the E-Mail that you register with. It is recommended not to use work or business emails, as they can be blocked by your facility's spam filter.

If you have lost or deleted your certificate, visit www.iuoelocal95.org and complete a duplicate certificate request!

IF YOU NEED A DUPLICATE CERTIFICATE ALL REQUESTS MUST BE DONE VIA THE LOCAL 95 WEBSITE. **CHECK YOUR SPAM/JUNK MAIL IF YOU CANNOT LOCATE IT.**

***ALL CLASS CANCELLATIONS AND REFUNDS PLEASE SEE FOLLOWING PAGE!!**

CITY LICENSE RENEWAL CLASS CREDITS CAN BE TAKEN **WITHIN 364** DAYS BEFORE YOUR LICENSE EXPIRES!!!! YOU CANNOT TAKE THE SAME CLASS TWICE WITHIN 2 YEARS PER CITY GUIDELINES!



REFUND POLICY FOR CLASS CANCELLATIONS:

**ALL CLASS CANCELLATIONS NEED TO BE DONE VIA THE
LOCAL 95 WEBSITE AT
WWW.IUOELOCAL95.ORG**

NO EXCEPTIONS!!

**IF YOU PAID FOR A CLASS, CANCELLED VIA THE LOCAL 95
WEBSITE, AND NEED REFUNDED YOU WILL NEED TO CALL**

412-422-4702 EXT. 112

**REFUNDS WILL BE ISSUED BY CHECK, THAT WEEK, TO THE
ADDRESS USED ON YOUR REGISTRATION!**

**PLEASE DO NOT DISPUTE THE CLASS CHARGE THROUGH
THE WEBSITE. THERE ARE FEES AND IT DELAYS THE
REFUND PROCESS!**