

www.woodlandstates55.com

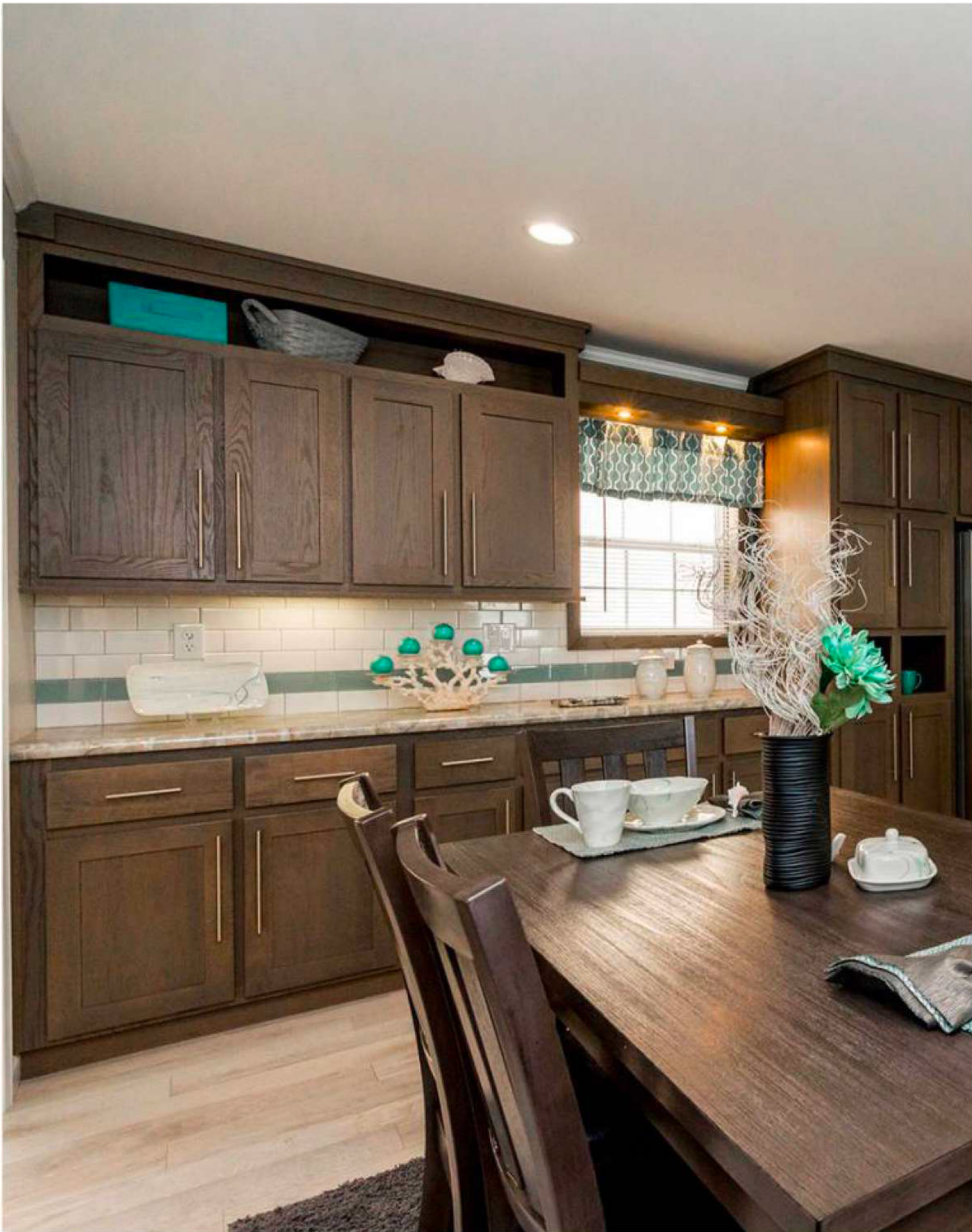
FLOOR PLANS / FEATURES

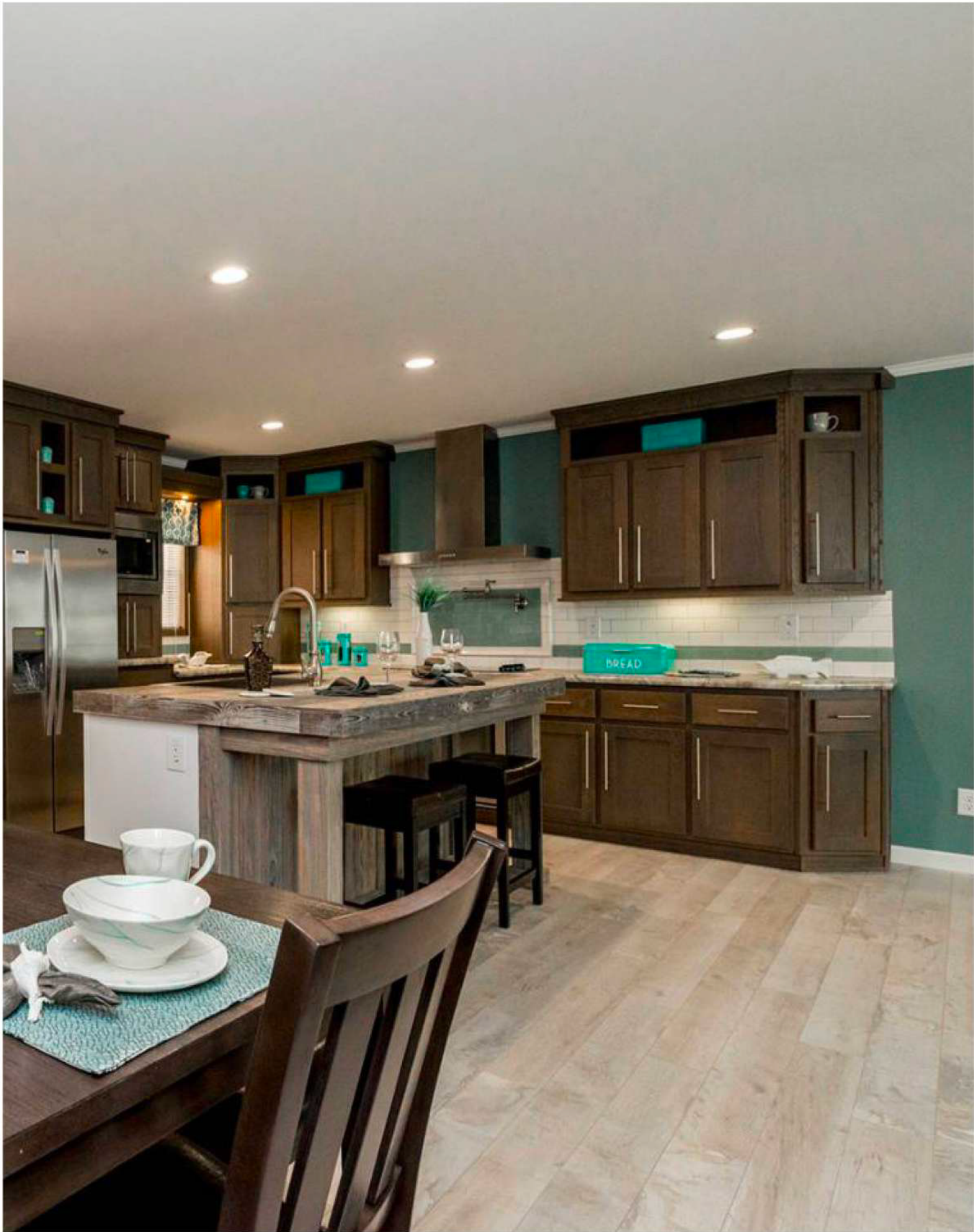
WOODLAND ESTATES

ACTIVE
55+
ADULT
COMMUNITY

*1341 Rindge Road,
Fitchburg, MA 01420*

978-582-4339





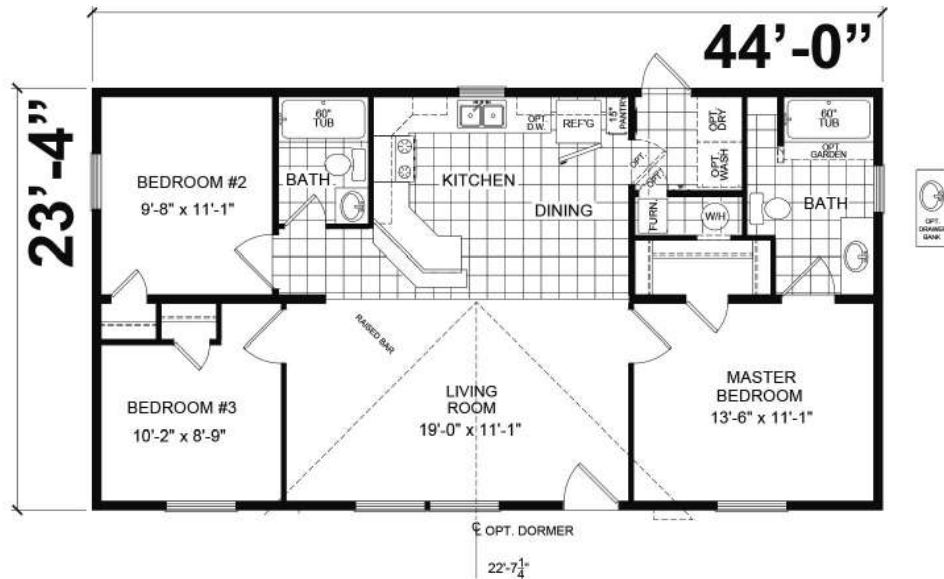
B-24201

23'-4" x 42'
2 bed-2 bath
980 sq. ft.



B-24401

23'-4" x 44'
3 bed-2 bath
1027 sq. ft.



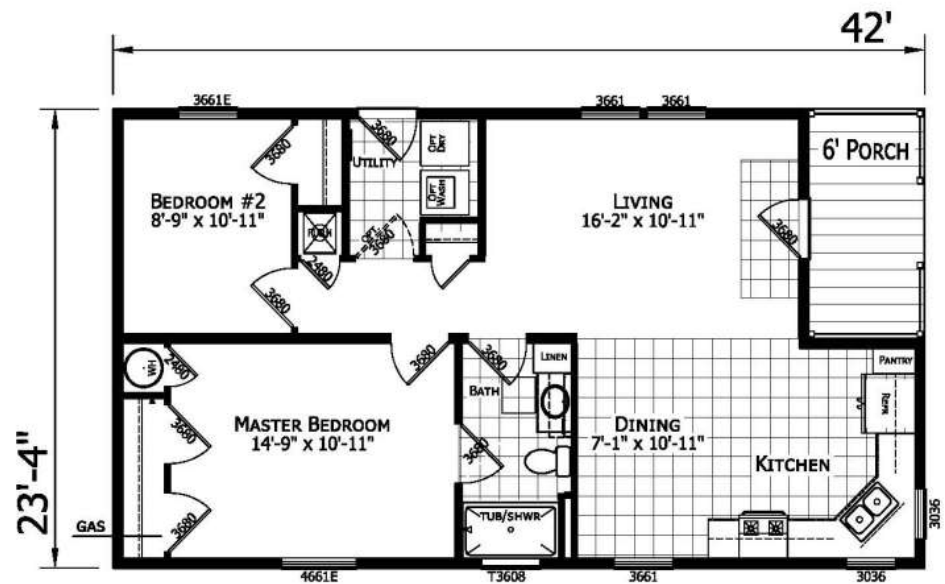
B-24803

23'-4" x 48'
3 bed-2 bath
1120 sq. ft.



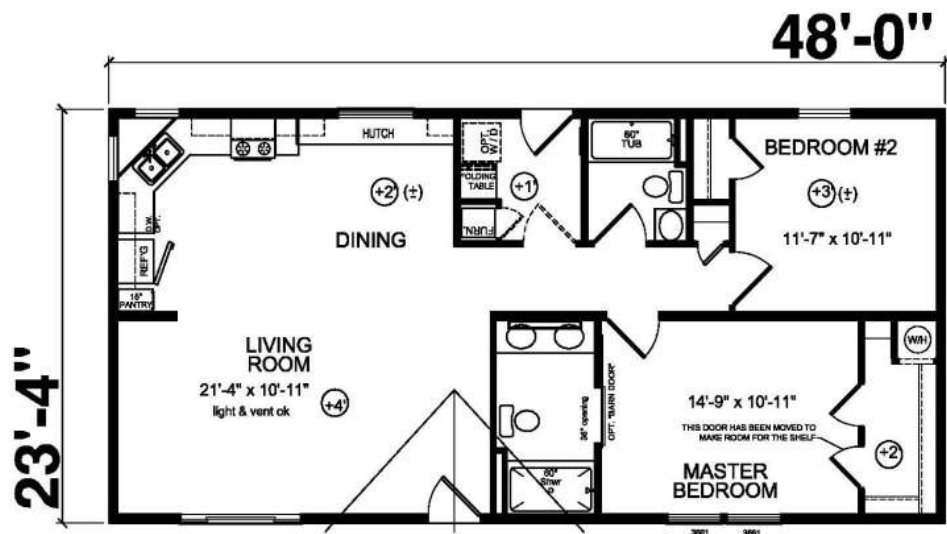
B-24201

23'-4" x 42'
2 bed-1 bath
980 sq. ft.



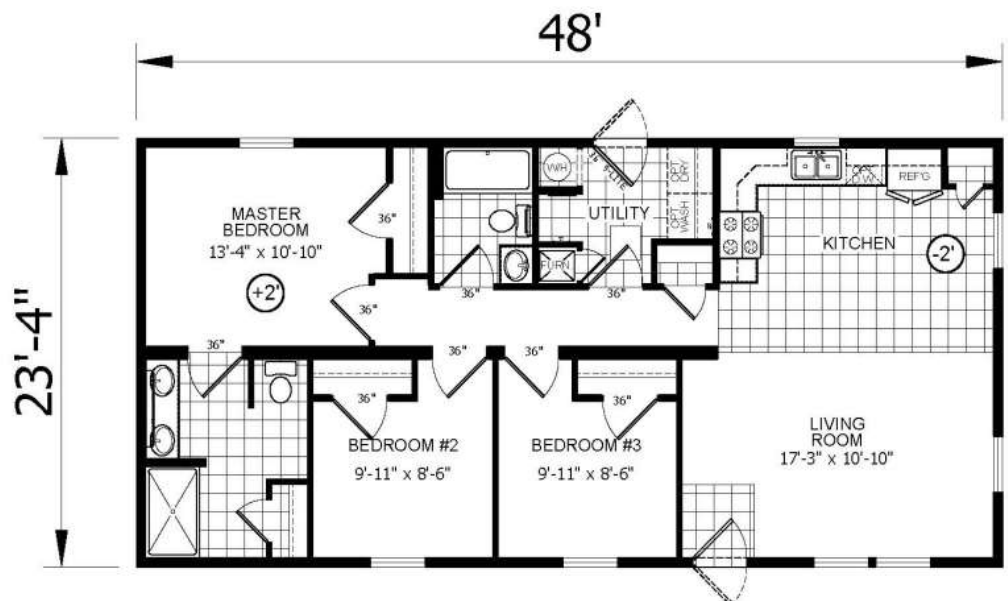
B-24201

23'-4" x 48'
2 bed-2 bath
1120 sq. ft.



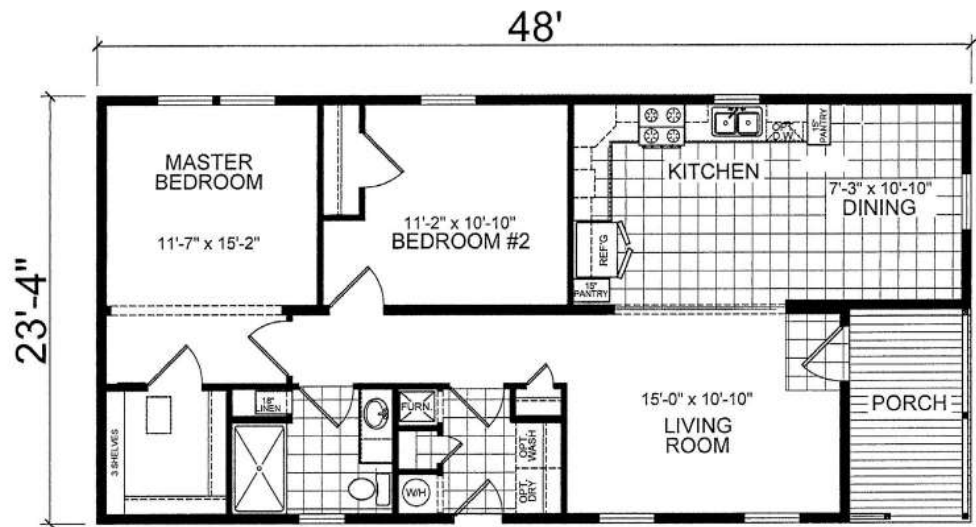
B-24201

23'-4" x 48'
3 bed-2 bath
1120 sq. ft.



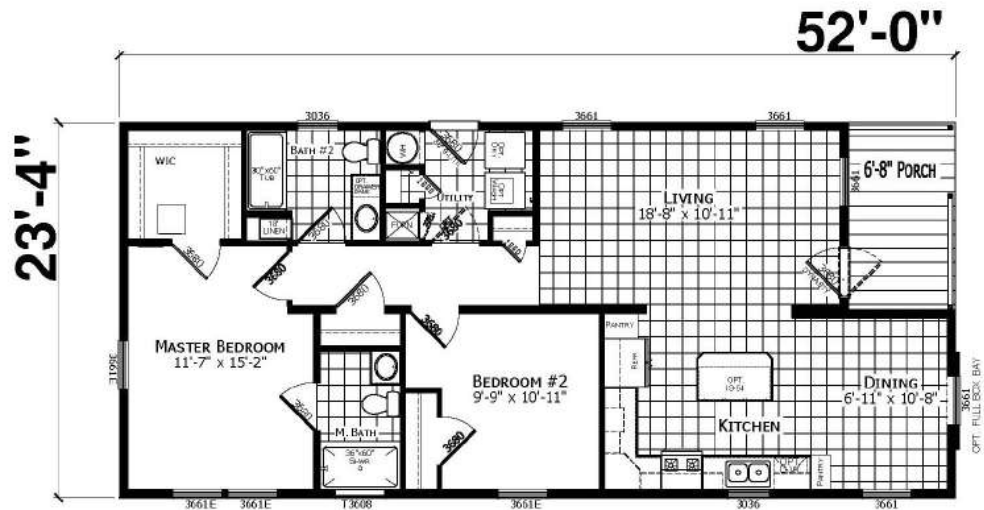
B-74851

23'-4" x 48'
2 bed-1 bath
1120 sq. ft.



B-74851

23'-4" x 52'
2 bed-2 bath
1213 sq. ft.



B-24803

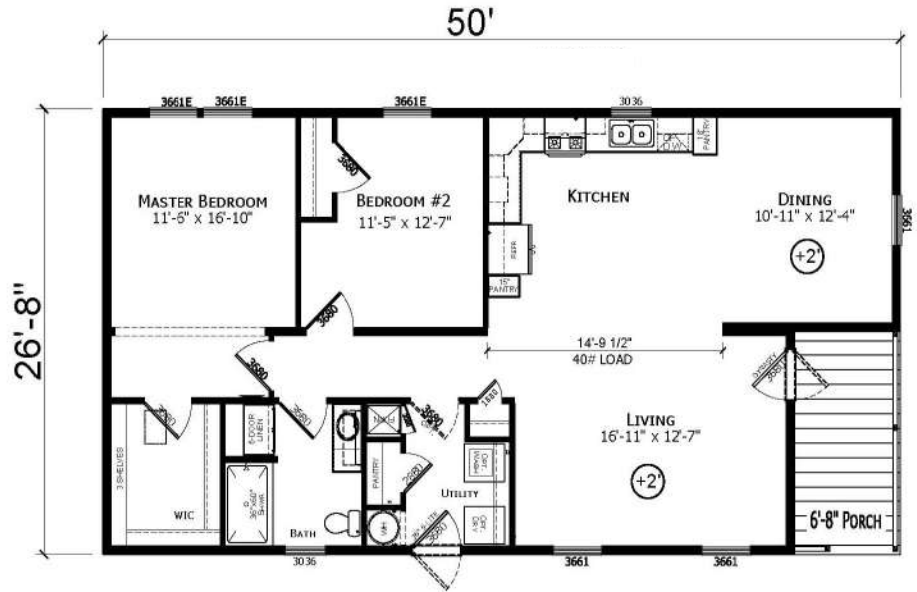
23'-4" x 56'
3 bed-2 bath
1307 sq. ft.





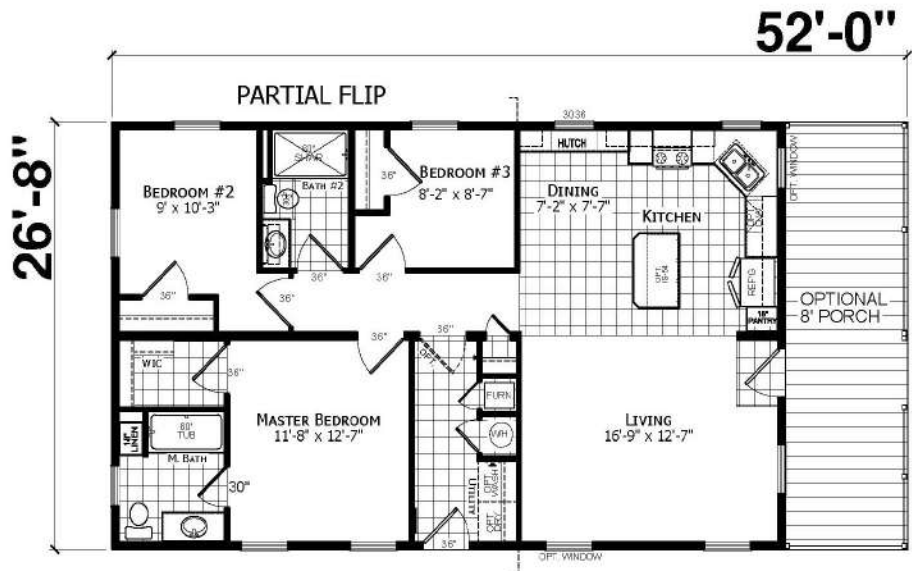
A-74851

26'-8" x 50'
3 bed-2 bath
1387 sq. ft.



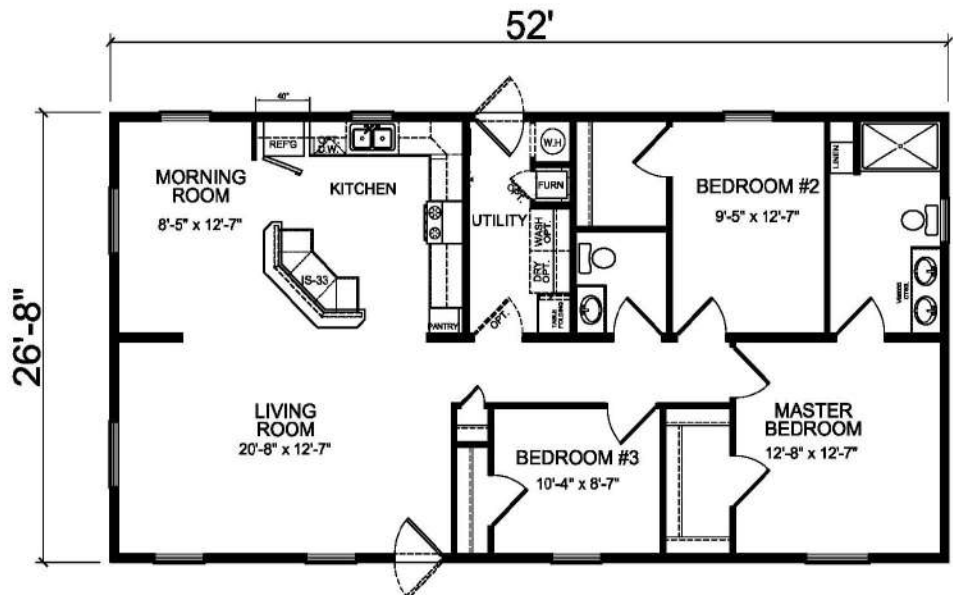
A-24403

26'-8" x 52'
3 bed-2 bath
1387 sq. ft.



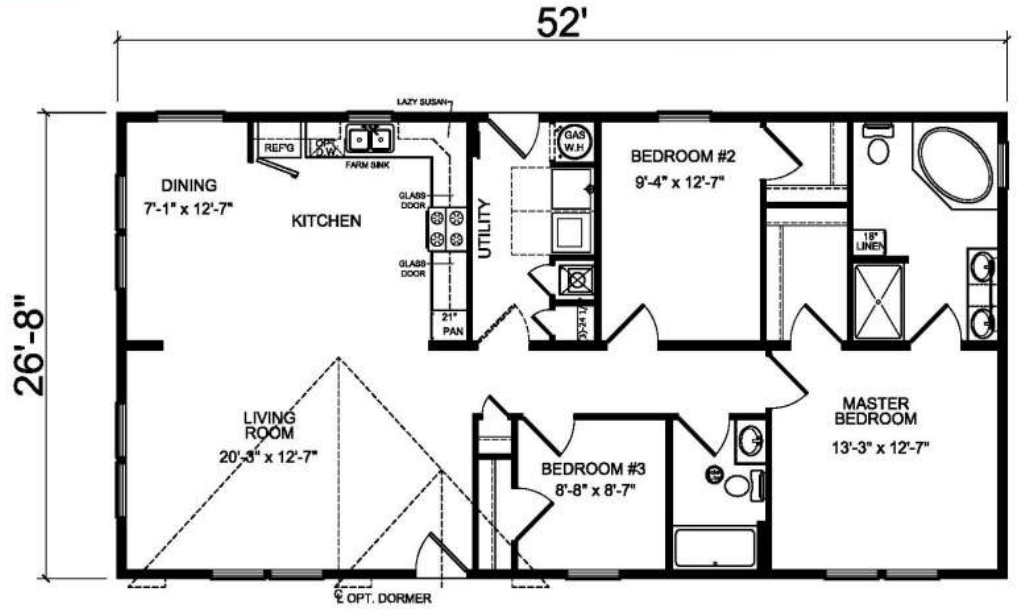
B-24201

23'-4" x 48'
3 bed-2 bath
1120 sq. ft.



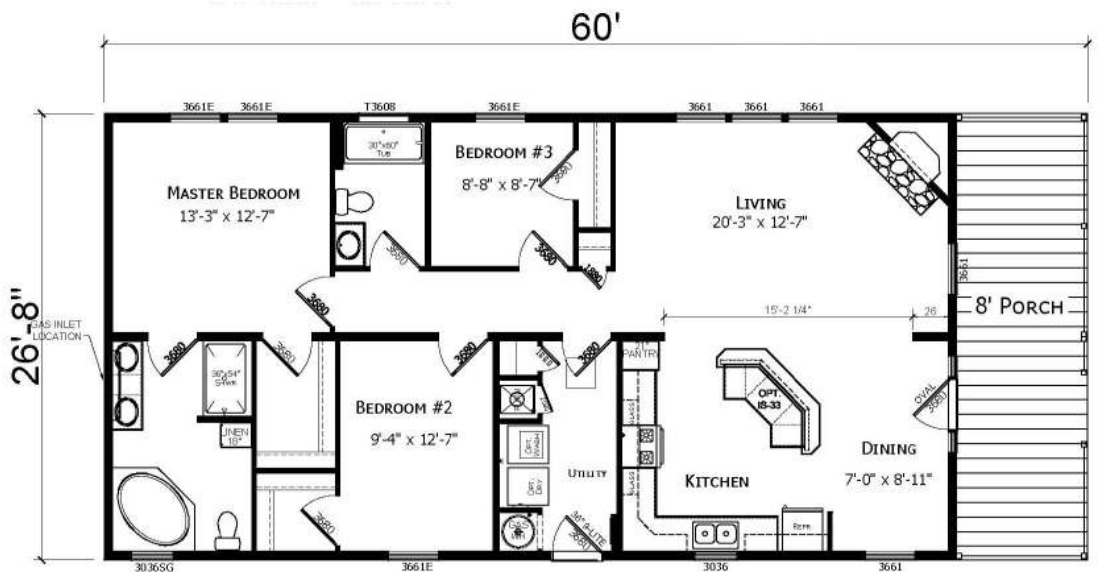
A-45231

26'-8" x 50'
3 bed-2 bath
1387 sq. ft.



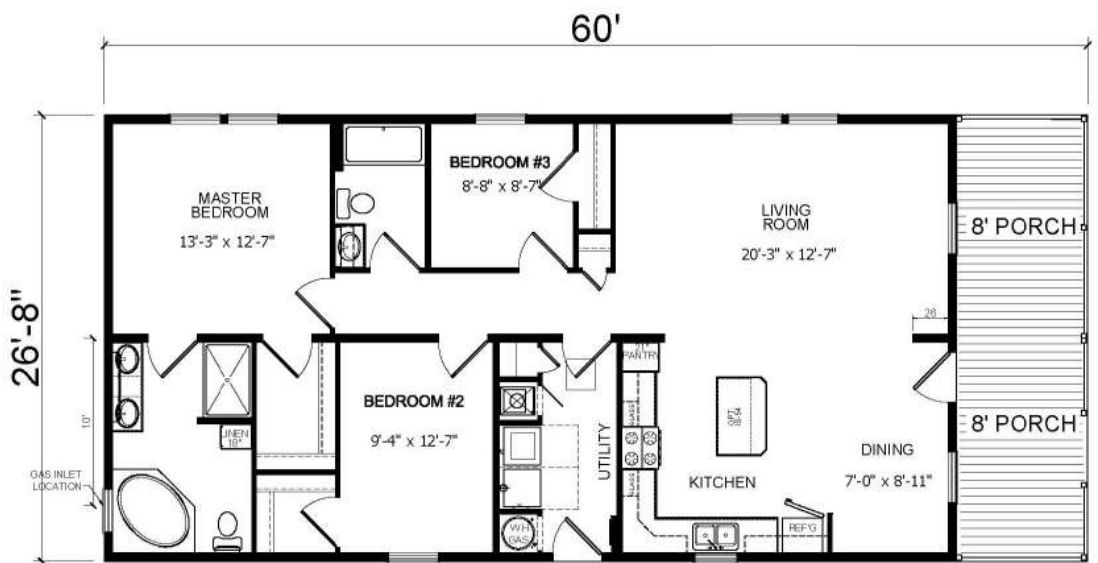
60'
OPTION
w/ Fireplace

26'-8" x 60'
3 bed-2 bath
1600 sq. ft.



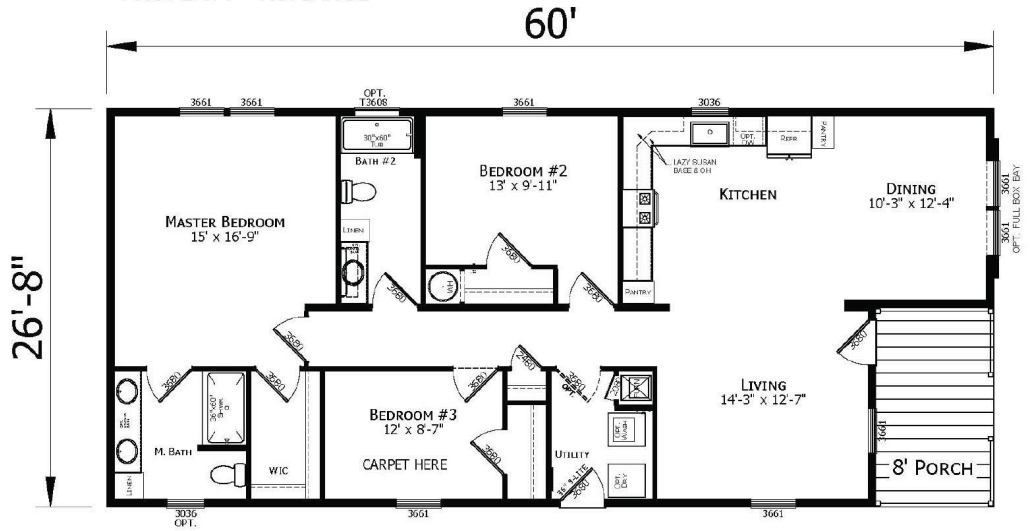
60'
OPTION

26'-8" x 60'
3 bed-2 bath
1600 sq. ft.



A-7980-18

26'-8" x 60'
3 bed-2 bath
1600 sq. ft.



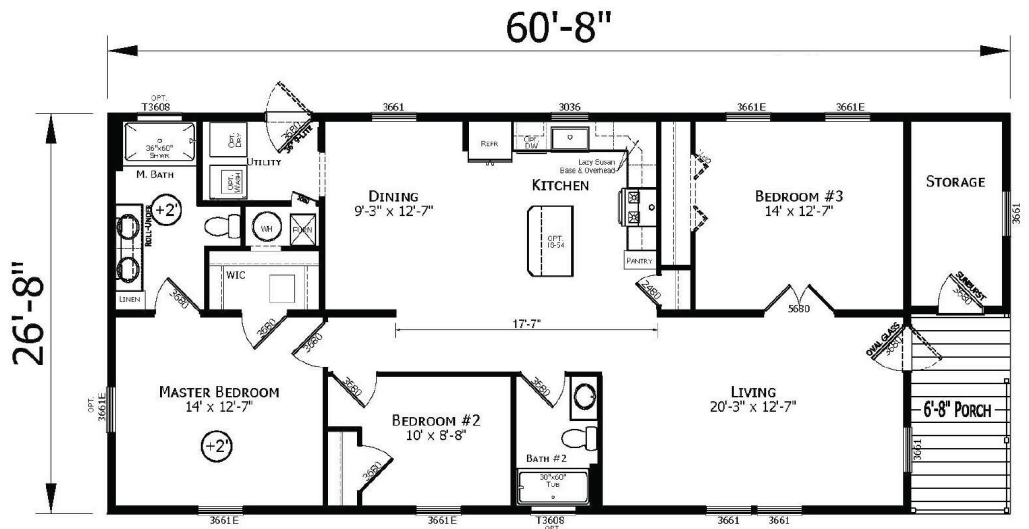
A-7980-19

26'-8" x 60'
3 bed-2 bath
1600 sq. ft.

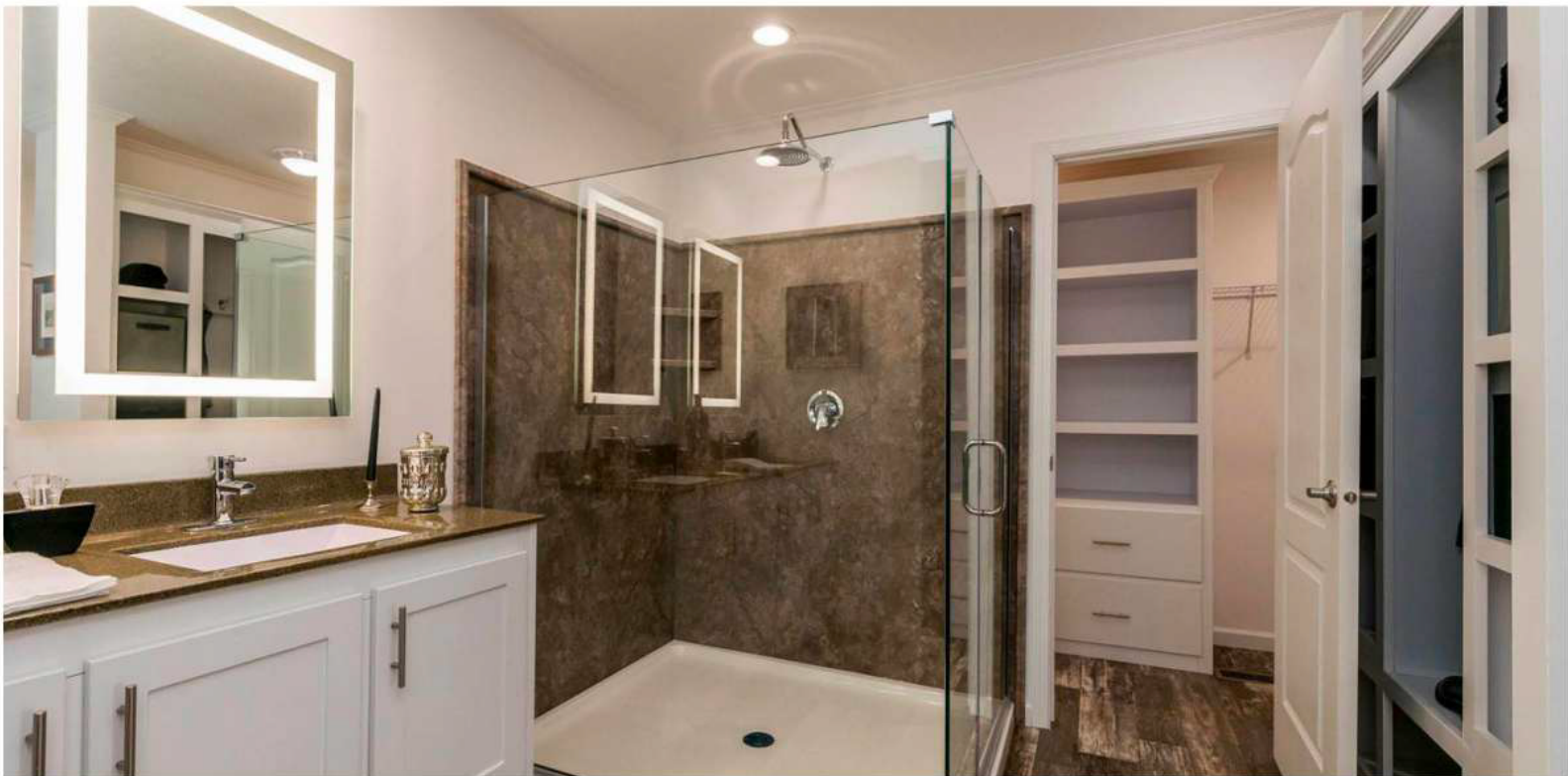


A-25211

26'-8" x 60' 8"
3 bed-2 bath
1618 sq. ft.

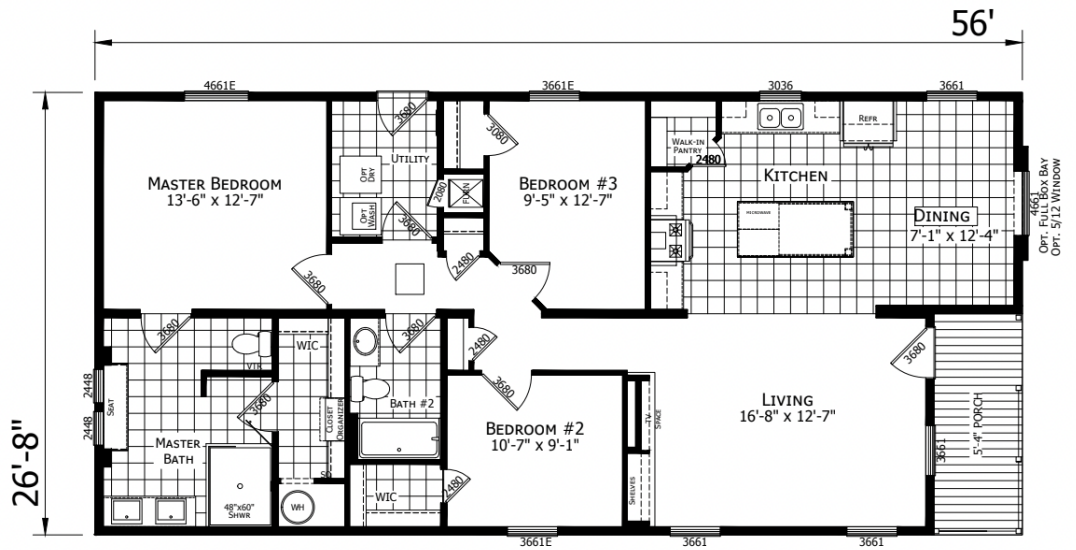




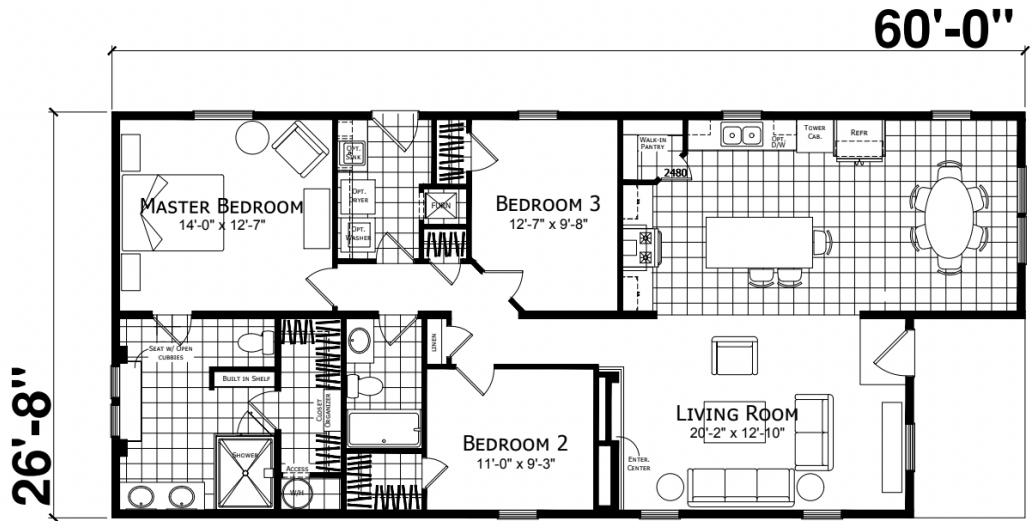


122-07-CTN.2-25

56'-0" X 26'-8"
3 bed - 2 bath
1493 sq. ft.

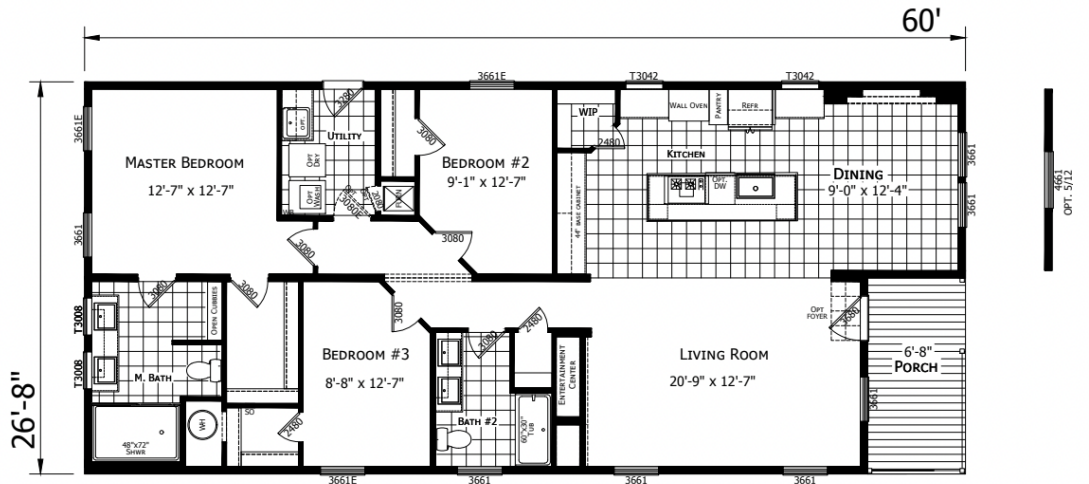


Catina 26x60



2860H32A3D

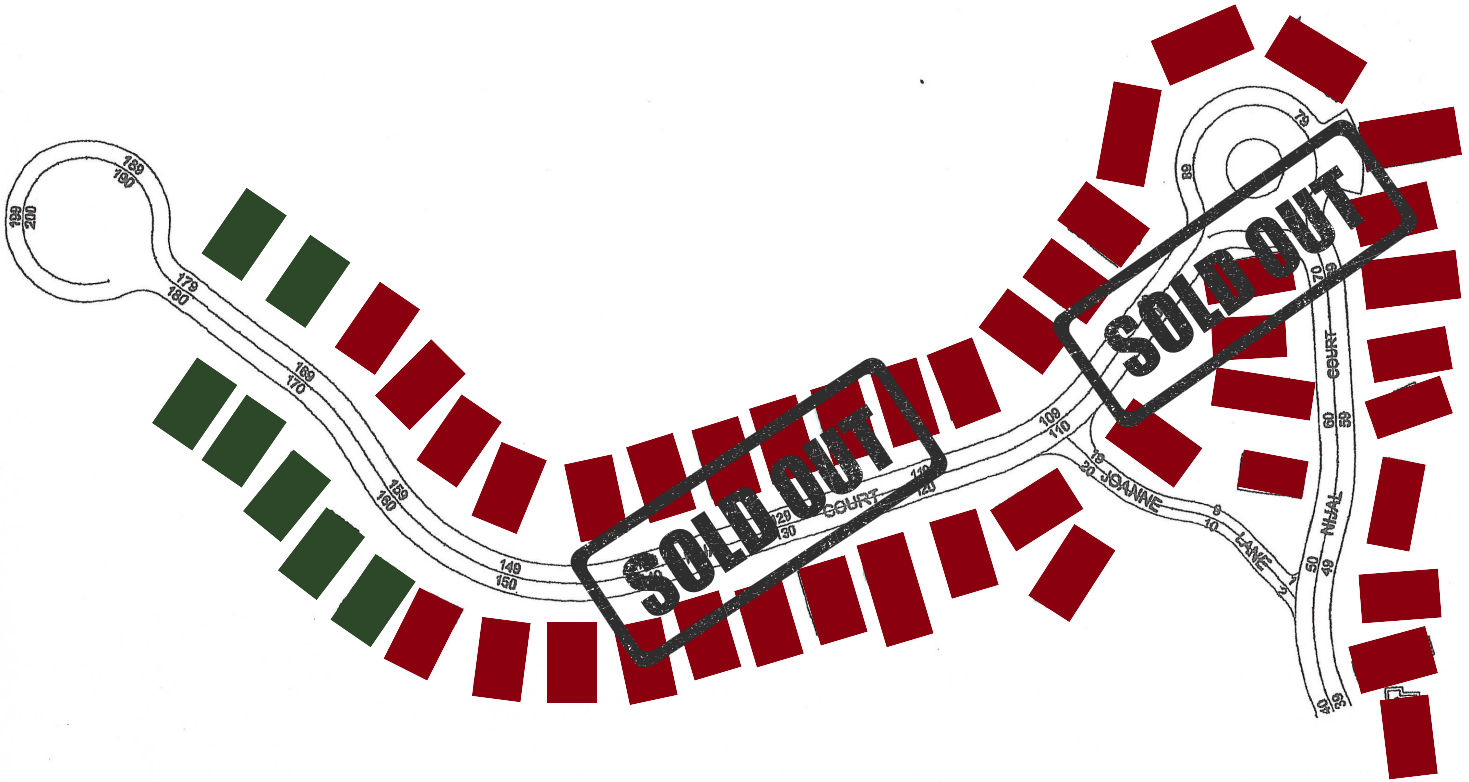
60'-0" X 26'-8"
3 bed - 2 bath
1600 sq. ft.



WOODLAND ESTATES

1341 Rindge Road, Fitchburg, MA 01420

978-582-4339



www.woodlandestates55.com

Priority FUNDING™
 Manufactured Home Loan Specialists

info@priloan.com
 877-393-5511
 Priloan.com

NMLS Company ID: 3314




Are you paying TOO MUCH for your insurance?
 We can save you money on your homeowners or renters insurance. We Guarantee it!

goosehead INSURANCE CALL NOW 603.389.6229

Why buy from a single source insurance carrier? Goosehead Insurance can instantly get you multiple quotes, getting you the best price. Every time.

- ✓ Best Selection
- ✓ Best Price
- ✓ Best Service
- ✓ Time Savings
- ✓ Honesty & Integrity



Own or rent, we have the most affordable solution for you. And we do all the legwork so you don't have to!

STERLING ASSOCIATES

Sterling Associates
 Manufactured Home Lending

Sean F. Rogers

49 Church St. Whitinsville, MA

Office: 800.286.8073
 Cell: 508.662.3722
 Fax: 508.234.1557
 sean.rogers@unibank.com
 www.mhbanker.com
 NMLS#: 688947

