

This map is your permit to hunt all game in accordance with the seasons, rules, and regulations listed hereon. EXCEPT for certain gun deer hunts. A separate gun deer hunting permit will be issued at the checking station on the dates designated on the back of this permit. This permit must be signed and in your possession to be valid.

Signed _____

Date _____

A separate trapping permit can be obtained from the area biologist.

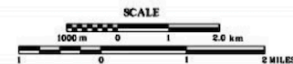
FRANKLIN COUNTY

JAMES D. MARTIN · SKYLINE WILDLIFE MANAGEMENT AREA

ALABAMA DEPARTMENT OF CONSERVATION AND NATURAL RESOURCES

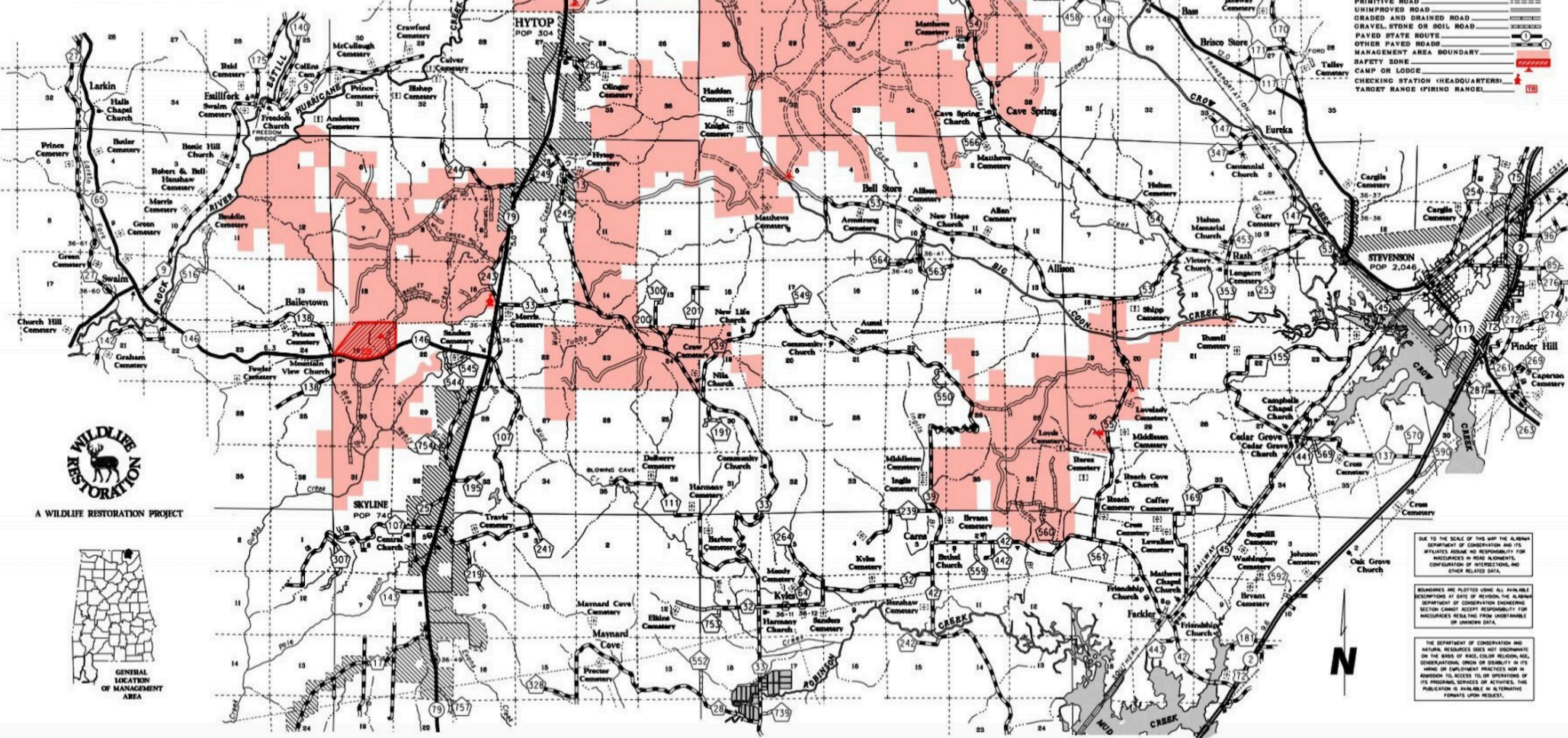
ENGINEERING SECTION
IN COOPERATION WITH THE

DIVISION OF WILDLIFE AND FRESHWATER FISHERIES
FOREVER WILD LAND TRUST AND ALABAMA POWER



LEGEND

- HIKING TRAIL
- HORSE TRAIL
- PRIMITIVE ROAD
- UNIMPROVED ROAD
- GRADED AND DRAINED ROAD
- GRAVEL, STONE OR SOIL ROAD
- PAVED STATE ROUTE
- OTHER PAVED ROAD
- MANAGEMENT AREA BOUNDARY
- SAFETY ZONE
- CAMP OR LODGE
- CHECKING STATION (HEADQUARTERS)
- TARGET RANGE (FIRING RANGE)



A WILDLIFE RESTORATION PROJECT



GENERAL LOCATION OF MANAGEMENT AREA

N

DUPLICATE TO THE SCALE OF THIS MAP THE ALABAMA DEPARTMENT OF CONSERVATION AND NATURAL RESOURCES HAS NO RESPONSIBILITY FOR INACCURACIES IN ROAD ALIGNMENTS, CONFIGURATION OF INTERSECTIONS, AND OTHER RELATED DATA.

BOUNDARIES ARE PLOTTED USING ALL AVAILABLE RECORDS. AT DATE OF REVISION, THE ALABAMA DEPARTMENT OF CONSERVATION AND NATURAL RESOURCES ENGINEERING SECTION ACCEPTS RESPONSIBILITY FOR INACCURACIES IN ROAD ALIGNMENTS, CONFIGURATION OF INTERSECTIONS, AND OTHER RELATED DATA.

THE DEPARTMENT OF CONSERVATION AND NATURAL RESOURCES DOES NOT ENDORSE OR GUARANTEE THE ACCURACY OF ANY INFORMATION ON THE BASIS OF WHICH ANY PERSON OR ENTITY MAY BE INFLUENCED IN ANY MANNER OR EMPLOYMENT PRACTICES NOR IN ANY MANNER ITS ACCESS TO OR USE OF ANY OF ITS PROGRAMS, SERVICES OR ACTIVITIES. THIS PUBLICATION IS AVAILABLE IN MICROFILM FORMATS UPON REQUEST.