





ZONING MAP

Tunkhannock Township
Wyoming County, PA

Legend

-  Lakes & Ponds
-  Lake Carey Watershed Overlay
-  Susquehanna River
-  Floodplain Overlay

Zoning Districts

-  R - Residential
-  RA - Rural-Agricultural
-  CI - Commercial-Industrial
-  VC - Village Commercial

ZONING DISTRICT BOUNDARIES

Zoning district boundary lines are intended to follow or be parallel to the centerline of streets, streams and railroads, and lot or property lines as they exist on a recorded deed or plan of record in the Wyoming County Recorder of Deeds Office and on the Wyoming County Tax Maps at the time of enactment of the Zoning Ordinance. Where district boundary lines are delineated by dimensions, the boundary shall be parallel to the adjoining road at the specified horizontal dimension measured perpendicularly from the centerline of the road.

FLOODPLAIN OVERLAY DISTRICT

The Floodplain Overlay District is coterminous with the identified floodplain as delineated on the most current Flood Insurance Rate Map issued by the Federal Emergency Management Agency.

LAKE CAREY WATSHED OVERLAY DISTRICT

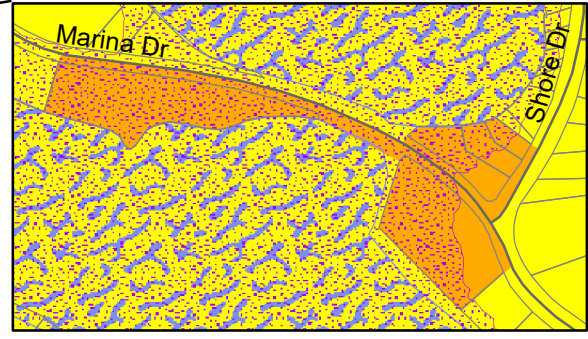
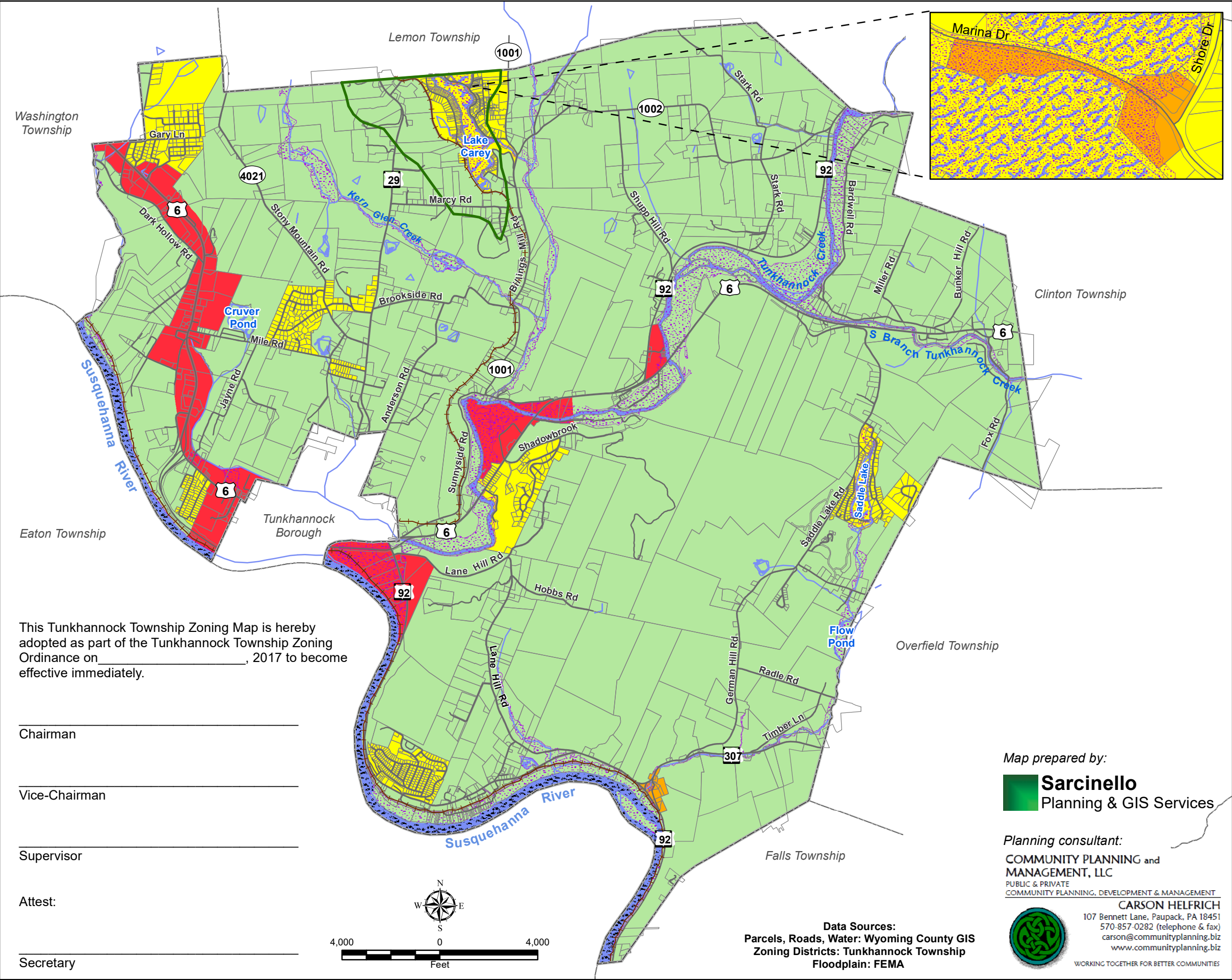
The Lake Carey Watershed Overlay District includes all areas in the Lake Carey Watershed as defined and regulated by Section 401.5 of the Zoning Ordinance. It is shown on this map for illustrative purposes and must be field checked.

AIRPORT OVERLAY DISTRICT

The Airport Overlay District includes all of the land lying beneath the approach surfaces, primary surfaces, transitional surfaces, horizontal surfaces, and conical surfaces as applied to airports as defined and regulated by Article XIII.

PROPERTY LINES

Property lines are from the Wyoming County Tax Maps.



This Tunkhannock Township Zoning Map is hereby adopted as part of the Tunkhannock Township Zoning Ordinance on _____, 2017 to become effective immediately.

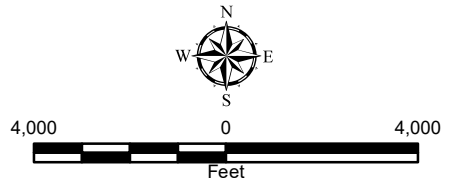
Chairman _____

Vice-Chairman _____

Supervisor _____

Attest: _____

Secretary _____



Data Sources:
Parcels, Roads, Water: Wyoming County GIS
Zoning Districts: Tunkhannock Township
Floodplain: FEMA

Map prepared by:
Sarcinello
Planning & GIS Services

Planning consultant:
COMMUNITY PLANNING and MANAGEMENT, LLC
PUBLIC & PRIVATE
COMMUNITY PLANNING, DEVELOPMENT & MANAGEMENT

CARSON HELFRICH
107 Bennett Lane, Paupack, PA 18451
570-857-0282 (telephone & fax)
carson@communityplanning.biz
www.communityplanning.biz
WORKING TOGETHER FOR BETTER COMMUNITIES

Date: March 28, 2017