

TOB MONTHLY KIDS

THEOLOGY OF THE BODY

AGES 6-9
(+PARENT)

ISSUE 2 (CYCLE A)

INSIDE:

HUMANS + PETS BENEFIT EACH
OTHER IN DIFFERENT WAYS

THERE IS A LOGICAL ORDER OF
GOD, HUMANS, ANIMALS, AND
PLANTS

PET THERAPY HELPS THE
SICK + LONELY

WHAT OUR DNA TELLS US
ABOUT OUR SIMILARITIES AND
DIFFERENCES

Your purpose
is unique and
wonderful!



So is
hers!

EVERY BODY HAS A PURPOSE

HUMANS. ANIMALS. PLANTS. WE ALL HAVE PERFECT DESIGN &
PURPOSE JUST AS WE ARE.

I AM A GIFT! MY NAME IS:

.....➔

MAIN POINT: PEOPLE ARE ORDERED DIFFERENTLY FROM (AND ABOVE) ANIMALS + PLANTS

(Christian Anthropology Standard 2)

FIRST THOUGHTS...

There is a logical* ordering of living things created by God: human, animal, plant. Humans and animals provide different benefits to one another. Humans can take care of animals as pets or consume* them as energy. Animals can provide a feeling of companionship* to humans, but they cannot shelter, feed, or care for humans! Humans and animals are just so different. The greatest difference of all is that humans have a rational soul* that allows them to determine right and wrong from a lens of morality. We are so blessed to be human, and we are blessed to be able to enjoy animals and plants! Thank you, God.

*work with a parent to define these words (there is a glossary in the back!)

With a parent, list some of
the things a HUMAN can do
for an ANIMAL:

.....

.....

.....

.....

.....

With a parent, list some of
the things an ANIMAL can do
for a HUMAN:

.....

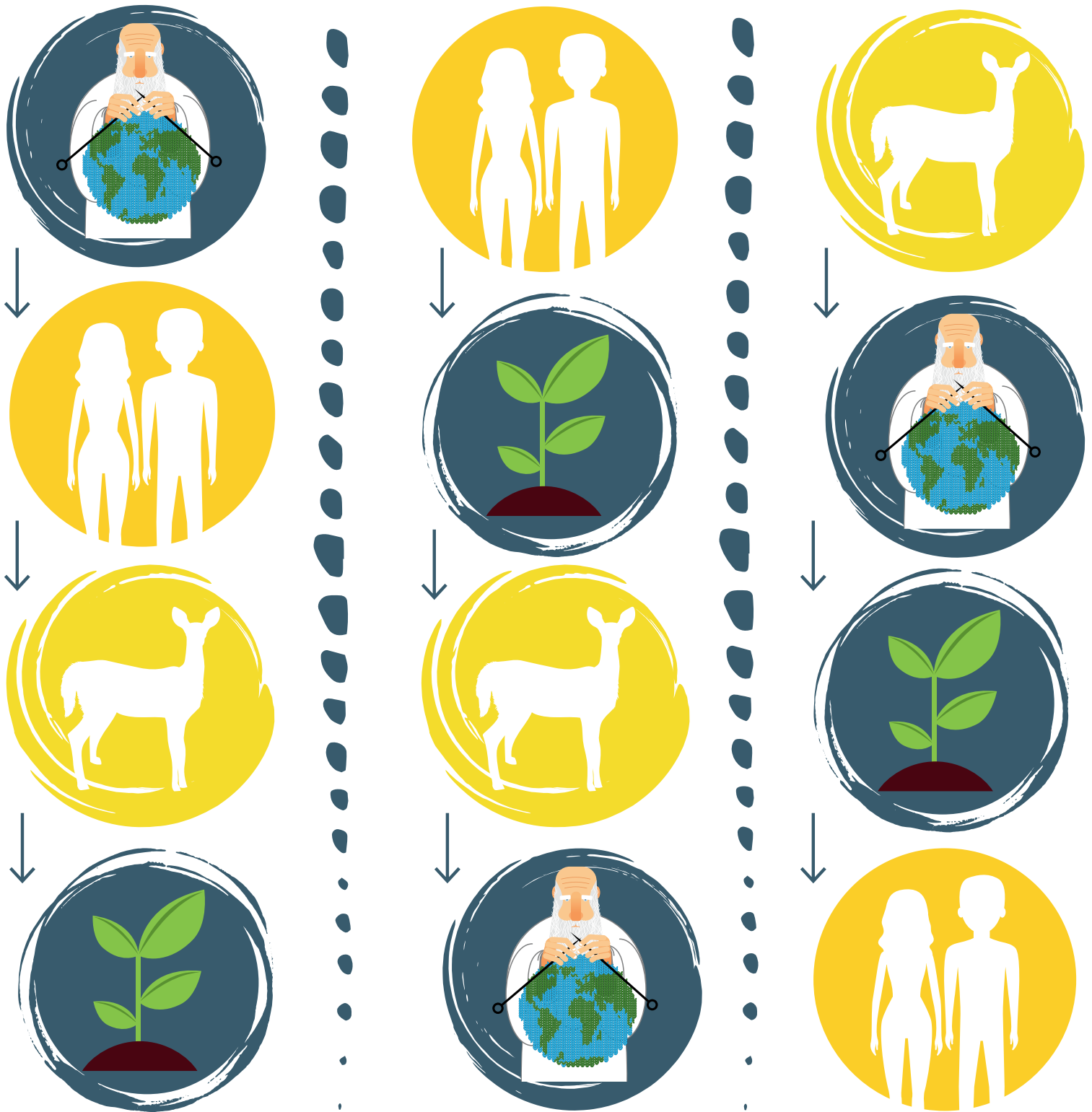
.....

.....

.....

.....

Which chain shows the correct ordering? Circle it. Why does it make sense? Why do the others not make sense? Tell your parent.



Did you know God gave our eyes both **rods** and **cones** to see? Owls have more rods for superb night vision. A chicken has only cones, for detecting tiny insects. Humans have a good mix of both rods and cones, allowing us to see objects at the end of our noses and also stars light-years away.

- Dr. Paul Brand, In His Image.

Which of these charities do you think are most important?
Refer to the previous page to help you answer this.

MARY'S MEALS



Provides food
& education

Jesus said, "Just as you
did it to one of the least
of these ... you did it to
me" and to the others
he said ...

CYO

(Catholic Youth Organization)



Teaches faith
in sports

HUMANE SOCIETY



Helps abandoned
pets

"depart from me ... for I
was hungry and you
gave me no food, I was
thirsty and you gave me
nothing to drink."
- Matthew 25:40-42

NATURE CONSERVANCY



Conserves land
& water

CRS

(Catholic Relief Services)



Assists the poor
overseas

Explain your reasoning:

.....

.....

.....

Pet therapy can provide comfort + companionship at the end of human life (and for the sick + lonely). Which three animals do you think would be best at this job? Why? Write your answers below.

.....

.....

.....

Color the cat + the aging human hand. Discuss with a parent why it is important to care for aging friends + relatives.



Almost every animal has an amygdala - the tiny part of our brain that makes us feel afraid.

But God made us humans extra special.

He gave us an even bigger part of our brain called a **prefrontal cortex**. The prefrontal cortex helps us make rational and virtuous decisions. Yours is just beginning to grow... it won't finish growing until you are 27!

All living things share some of the same building blocks. Humans, animals, and plants all have some of the same matter. But there is a very big difference between these three categories.



Which of these has a body?

Which has a rational soul?



Which of these has a body?

Which has a rational soul?

DID YOU KNOW?

CCC (Catechism of the Catholic Church) 2418 says: "It is contrary to human dignity to cause animals to suffer or die needlessly. It is likewise unworthy to spend money on them that should as a priority go to the relief of human misery. One can love animals; one should not direct to them the affection due only to persons."

God created humanity on earth together with the visible world. At the same time, however, God orders us to subdue and rule the earth: we are therefore placed above the world. - St. JP2, TOB 2:3

GLOSSARY OF TERMS

COMPANIONSHIP: being in the company of another, often in a good friendship

CONSUME: to eat, drink, or use up

DNA: the material that carries all the information about how a living thing will look and act. It is in every cell of every living thing

LOGICAL: a reasonable way of thinking about things

SOUL: the innermost part of a human that, with the body, completes a person and connects us to God

SUBDUE: to quiet, care for, or control something

WANT TO LEARN MORE?

VISIT:



tobparentschool.org

READ:



[Blueberries for Sal](#)

by Robert
McCloskey

Have a little
extra time?

CRAFT EXTENSION

3 Kings/Camels Handprints

TIME: 30 minutes

MATERIALS:

washable paint, paper, paintbrush

ACTIVITY:

- 1) Search '3 kings handprints' online for an image to follow.
- 2) Create camels + kings with hand/thumbprints.
- 3) Add details with a paintbrush.
- 4) Discuss differing roles of camels + humans in the Epiphany

SERVICE EXTENSION

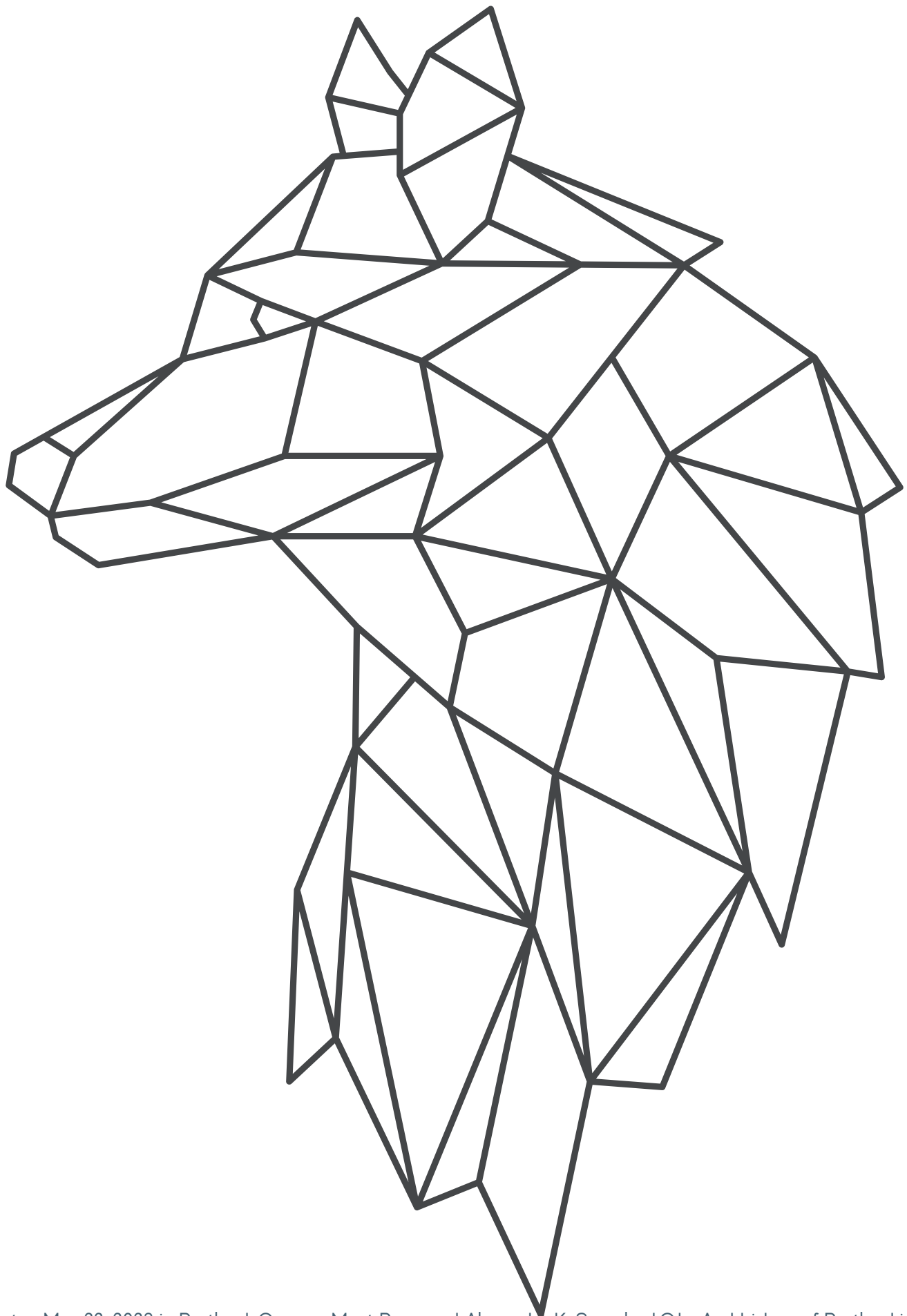
Bring Joy With a Pet Visit

TIME: 1 hour

MATERIALS: pet

ACTIVITY:

- 1) Do you have a loving pet? Or can you borrow one?
- 2) Do you know someone who is sick or lonely who loves animals?
- 3) Arrange to take your pet to visit this person.
- 4) Discuss with a parent the roles of the animal + human in this visit.



Imprimatur, May 22, 2023 in Portland, Oregon, Most Reverend Alexander K. Sample, J.C.L., Archbishop of Portland in Oregon

Copyright © 2022 TOB Parent School • All rights reserved • Do not duplicate