



GROOMING YOUR NEWFOUNDLAND

GROOMING TOOLS

Greyhound comb:

What is it for? This comb is used for line-combing, which removes significant amounts of undercoat. It is an excellent option to remove dead undercoat during seasonal shedding. Use this comb to remove debris from the coat like sticks and burrs. It can also remove small matts. The comb also assists greatly with scissoring work (trimming).

Which one should I get? The greyhound comb comes in a number of different configurations depending on your needs. For a Newfoundland, the medium coarse/fine is recommended. This comb has one end with larger spaced tines (medium coarse) and another end with tighter spaced tines (fine). The two ends provide greater flexibility in your grooming. The price of this comb ranges greatly from about \$15 to about \$50. The price difference comes from the quality of the manufacturing. The \$15 comb will work just fine, but the tines will bend much sooner than the more expensive options and you may have to replace the comb more frequently.



Undercoat rake:

What is it for? Some find the greyhound comb can be tiring on the wrists and prefer an undercoat rake. This tool works very similarly to the greyhound comb, but does not aid in scissoring work. Use this rake to line comb your Newf and remove undercoat.

Which one should I get? There are a variety of these combs available on the market. Some have longer tines than others. The Newfoundland has a very dense, thick coat so it is recommended to get a rake with sufficiently long teeth. Some come with two rows of teeth and others have multi-length tines. The multi-length tines and double rowed rakes are recommended for removing undercoat. If you are looking for a daily maintenance rake, stick with the single length winder toothed rakes.





GROOMING YOUR NEWFOUNDLAND

Mars Coat King (hair stripper):

What is it for? CAUTION: Use this tool sparingly and with proper technique as it is very sharp and will remove a lot of coat very fast! This tool is well known in the Newfoundland community. It removes unwanted 'bulk' from the coat very effectively. It is often also suggested for removing undercoat. It is not recommended for that purpose however. You will most certainly be able to remove undercoat, but you will also be cutting through the top coat. The tools described above are better suited for removing undercoat as they do not cut the coat. The best use for this device is removing unwanted thickness from the coat. Use it on the pants, chest, croup (rear), and around the neck area to thin out the coat and help it lay flatter and improve air flow to the skin. Some Newfs are prone to very thick pants and chest hair. The MCK (Mars coat king) does an excellent job of thinning out these thick areas.

How do I use it? This stripper has very sharp blades. Be careful not to cut the skin of your Newf when using it. Ensure that no matts are present when using this tool as it will snag on them. It is not a dematting tool. It is best to brush out your Newf before using this stripper. To thin out and de-bulk the coat lift the hair in the same way you would line-comb and starting at the roots brush the stripper through the coat. Then use a greyhound comb or a brush to remove the coat that has been stripped. Stop and look at your work often to ensure you are not creating any bald spots or uneven thinning. Repeat the stripping until you are happy with the amount of hair you have removed.

Which one should I get? The Mars coat king is a brand name (MCK for short). There is another cheaper option available as well by Oster. There are a variety of sizes available. The most-used by Newf owners is the 18 blade double wide. The blades are replaceable and should be replaced when they start to become dull to avoid damaging the coat. The MCK can be found easily online from various retailers.





GROOMING YOUR NEWFOUNDLAND

Pin brush:

What is it for? The basic pin brush is used for daily brushing maintenance. It does not get down to the skin, especially in the pants, chest, and feather areas. It is more of a surface brush that will remove light knots and snags and debris and improve air flow to the skin. It does not replace the need for removing undercoat with either a greyhound comb or undercoat rake.

Which one should I get? There are many pin brushes available on the market. It is recommended to avoid the brushes with the little balls on the end. These balls end up snagging on the coat and can also fall off. The brushes without the balls on the end will not damage your Newfs skin. There are a number of different shapes available. The long narrow style work well in areas like the armpits and groin. It is personal preference which style works best for you. There is also a significant price range for these brushes. The more expensive ones tend to have a longer life because the tines do not bend as easily. The length of the tine should also be taken into account. 27mm long tines are recommended for a Newf coat.



Slicker brush:

What is it for? A slicker brush is often used on puppies. Use this brush as an intro to grooming for your pup. It also has a number of uses on the adult Newf coat. It is helpful when trimming the feet and can also work well on matts.

Which one should I get? These brushes are readily available at all pet stores. Select the one that you think is an appropriate size.





GROOMING YOUR NEWFOUNDLAND

Matt splitter:

What is it for? These tools are used to help cut up matts so that they can then be combed out with ease.

Which one should I get? There are a number of options available. Some consist of a single blade that removes the entire matt in one swipe. These work well in areas that are hidden. They can leave a hole of missing fur, so use cautiously. There are also matt splitters that consist of a row of teeth. Instead of removing the matt in one swipe, these break up the matt in pieces. In the case of all matt splitters use caution as they do have very sharp blades and can remove coat very easily.



Single blade matt splitter



Multiple blade matt splitter

Clippers:

What is it for? Clippers are an excellent tool for trimming paw pads. You can also use them to 'tunnel' your Newfs stomach during the hot Summer months. This involves shaving a patch of their stomach from their armpits back to their groin. This prevents a lot of matting and helps keep the Newf cool. You can also do an all-over clip using clippers (not a shave).

Which one should I get? There are a wide variety of clippers on the market. Corded and cordless, different blades, different power levels, etc. The cordless are a great option. It makes it much easier when you have a Newf that isn't great at sitting still in the same spot. Clippers often also come with blade combs. A #2 or #3 blade comb does a good job tunneling your Newf's belly. There is no need to use a blade comb when doing paws.





GROOMING YOUR NEWFOUNDLAND

Dryer:

What is it for? A dog-specific high velocity dryer is a must-have with a Newfoundland. It ensures that the coat dries down to the skin, which helps prevent hot spots and other skin irritations. It also works very well at removing dust and dander from the coat in between baths. Once you have a dryer you will wonder how you lived without it!

What one should I get? There are a number of different makes and models on the market. The most popular are the K9 series, Metro Air, Double K, and Chris Christensen. Dryers are expensive, but they are worth investing in. Newfoundlands require a powerful dryer. The K9II or K9III are very popular amongst Newf owners. For the average Newf, the K9II is sufficient, but the K9III is more powerful. It is better to invest in a more expensive, powerful dryer than to purchase an inexpensive lighter duty dryer. Your drying time is significantly reduced with the more powerful dryers. Do not use a human hair dryer on your Newf. They are much too hot and do not have sufficient power.



K9II dryer with single motor



K9III with double motor

Grooming Table:

What is it for? If you are planning to do your own grooming and coat maintenance a grooming table is recommended. Not only will it prevent back injuries, it also helps control your Newf during a grooming session. If you have a Newf that is fidgety during grooming a grooming table may help.

What one should I get? There are a variety of grooming tables available. Some have a fixed height while others have a number of height options. There are also hydraulic tables on the market. You can also design and build your own grooming table using plywood and table legs. The recommended height for a Newf is 24 inches from the ground. The preferred length is 48 inches. When selecting a surface type consider what you will be using the table for. If you plan to wash your Newf on the table a coated table like the GroomRight is recommended as a wood surfaced table will warp over time from the water. There is a significant price range for grooming tables. Select the table that best meets your needs and budget. And don't forget the grooming arm. You will need this as well as a grooming noose to control your Newf. CAUTION: A Newf should never be left unattended on a grooming table as they can choke if they fall off with the noose around their neck.





GROOMING YOUR NEWFOUNDLAND

Scissors:

Which ones should I get? If you plan to do your own grooming then it will be necessary to invest in scissors. Shopping for scissors can be overwhelming as there are so many options available. The most important thing is to try out the scissors before purchasing if at all possible. Not all scissors will feel the same in your hands. There are three types of scissors to consider. These are listed in order of importance. I.e. if you are going to invest in scissors invest in them in this order:

Thinning shears: This is by far the most used shear on a Newfoundland. Use these shears to trim ears, feet, furnishings, pants, etc. They are extremely versatile. These shears come with a specific number of teeth. The 40+ teeth shears are a good option. The more teeth, the finer the cut. Less teeth will result in a "choppier" cut. There are single and double bladed thinning shears. Most use the single bladed, which has one solid blade and one toothed blade. The more expensive shears use Japanese steel, but a good mid-range shear will cost somewhere in the \$100 - \$200 range.

Curved shears: These shears are usually around 7-8 inches in length and are curved. Use these shears wherever a curved cut is required. These are often used to shape feet, hocks and feathers. They are a nice-to-have shear for the pet owner as you can get by with the thinning shear.

Straight shears: Similar to the curved shear, straight shears are usually around 7-8 inches in length. Use these shears very carefully! They are the most likely to leave a choppy/blunt look. You can use straight shears to clean up feet, cut out matts, or to make a really clean line on a dog (mostly for show grooming).



Thinning shears with one solid blade and one toothed blade



Curved shears



Straight shears



GROOMING YOUR NEWFOUNDLAND

PRE- BATHING

Follow these steps before bathing your Newfoundland:

- Remove all dead undercoat by line-combing your Newf with either a greyhound comb or undercoat rake. To line-comb your Newf, start at the lowest part of the dog (just above the elbow on the front and just above the hock on the back). Lift the coat up in with your one hand and comb the hair down in the direction of the hair growth with the other. You should be combing right down to the skin. Do the dog in sections all over its body to ensure you haven't missed any spots. This is the best way to remove all dead undercoat. It also gives you the opportunity to take a close look at the skin all over your Newf.
- Remove all matts from the coat using a matt splitter, greyhound comb, slicker brush, or with scissors
- If you have a dryer, blow the dog before a bath to remove debris, dust, and dander
- Brush out the entire coat to eliminate knots and tangles. This includes the furnishings. I.e. fully comb out the feathers, pants and tail along with the rest of the coat.

By following these steps you will have a much more successful bath and blow dry. You will be able to get down to the skin better with the shampoo and your drying time will be reduced from removing the dead coat. Overall, this pre-bath routine results in a cleaner dog and a more efficient bathing and drying routine.

BATHING

Fully soak the dog right down to the skin with slightly warm water. This will help loosen and remove dirt and help the shampoo penetrate down to the skin. Try and use warm water if available. Shampoo rinses better in warm water than in cold. Use shampoo specifically designed for dogs. It is not advisable to use human shampoo on your Newf as the PH levels of a dog differ from that of humans. There may also be ingredients in human shampoo that are irritants to a dog. Be sure to read the label of your dog shampoo. Some shampoos need to be diluted. If your shampoo needs to be diluted you can use an old dish soap bottle (that has been fully washed out) or you can buy a bottle specifically designed to dilute shampoo. Do not apply a shampoo that requires dilution directly to the whole coat as it is highly concentrated. After lathering the whole dog, rinse, rinse, rinse, and then rinse again!

DRYING

Use your high-velocity dog dryer to dry your Newf after bathing. CAUTION: Do not use a regular human hair dryer to dry your Newf. They are much hotter than a dog dryer and can easily cause damage. They also do not have sufficient power to dry your Newf. Start at the front of your Newf and work your way backwards in the direction that the hair lays. Make sure the hair is dry right down to the skin. It can take a couple of hours to fully and completely dry a Newf depending on their coat type. You can also use a brush while drying to help speed up the dry time and help the coat lay more flat. While drying your Newf take the time to look at its skin. This is a great opportunity to see if there are any open sores, red itchy skin patches, or wounds on your Newfs skin.

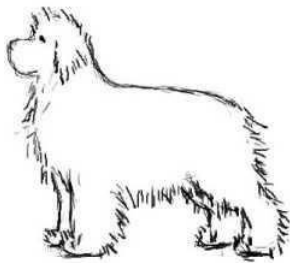


GROOMING YOUR NEWFOUNDLAND

TRIMMING

Newf Friends would like to thank Iwonna Salak of Neverine Newfoundlands for the use of the following illustrations and instructions on trimming a Newfoundland. For the Newf pet owner that just wants to keep their dog neatly trimmed it is recommended to focus on the ears, feet, and underline. The other illustrations below help you take your Newf trimming to the next level.

Before



by Logrus

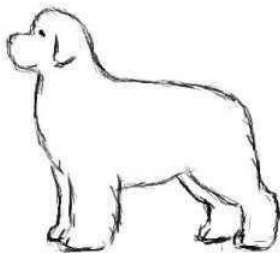


by Logrus



by Logrus

After



by Logrus



by Logrus



by Logrus

You can start to groom your dog when it is completely dry, perhaps the next day. The most important rule: it is better to cut less than too much! Good quality scissors are very important. Remember to comb out the entire coat carefully before grooming. Newfoundlands, must have medium length coat, without over-long and wispy bits of hairs. Groomed dogs MUST still have a natural appearance; be careful and don't leave visible cut marks!

Central Ontario

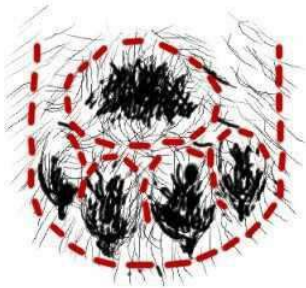


Newfoundland Dog Club

GROOMING YOUR NEWFOUNDLAND

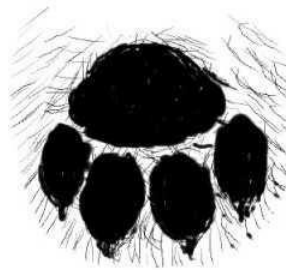
PAWS

Start with the front paws. Beginning under the paw, cut the coat that grows between the pads. You can use scissors or clippers for this.



by Logrus

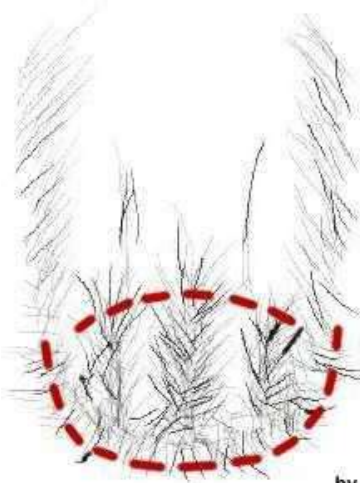
before



by Logrus

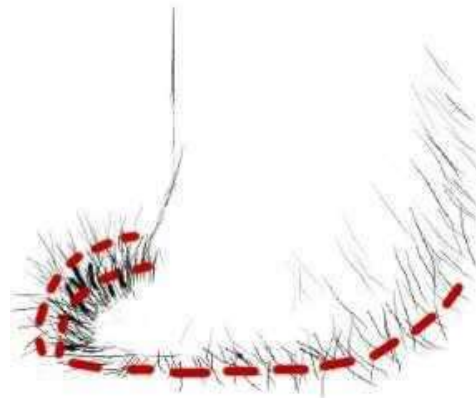
after

Lift the coat between the toes (a slicker brush does a great job of lifting the hair between the toes), combing upwards, and cut using straight scissors or curved. Your goal is a nicely rounded foot; be careful not to cut too much. Nails shouldn't be visible. If you do cut too much, don't worry, the coat grows quickly on the feet. On the rear part of the foot the coat must touch the ground with a gentle upward curve.



by Logrus

before



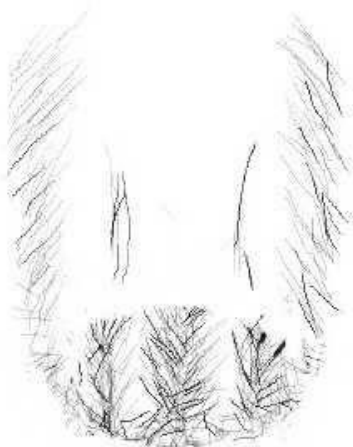
by Logrus

Central Ontario

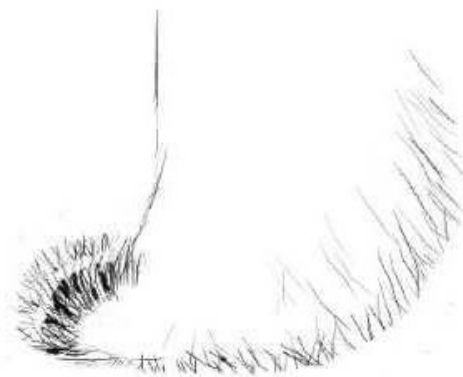


Newfoundland Dog Club

GROOMING YOUR NEWFOUNDLAND



by Logrus



by Logrus

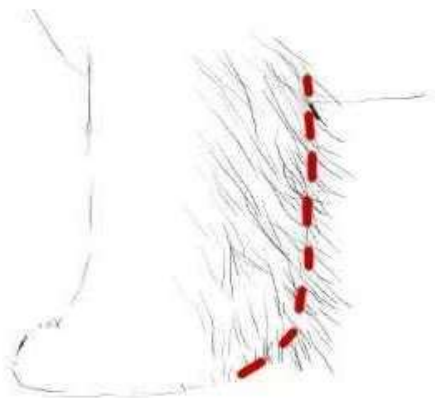
after

Cut the hind paws in the same manner.

Cut only in the direction of the coat, never upwards - comb the coat in the part you are working on and cut, comb and cut. Be sure to take a step back and look at your work. Always cut a couple of times, comb, and take a look. It is very easy to just keep cutting and cutting without looking at your work.

FOREQUARTERS

First, even out the feathering. Begin on the back part of the leg, next the outside, then the inside. You can use both your thinning shears and curved scissors on the feathers.



by Logrus



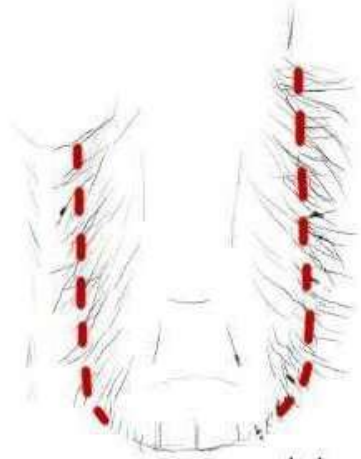
by Logrus

Central Ontario



Newfoundland Dog Club

GROOMING YOUR NEWFOUNDLAND

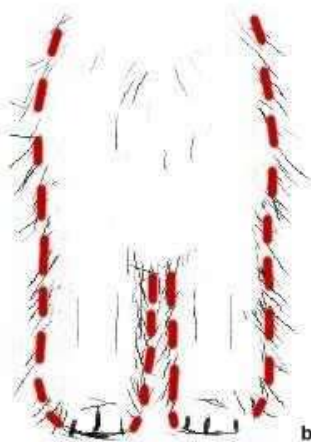


by Logrus

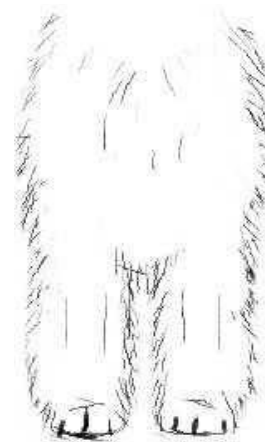


by Logrus

The front legs should prolong the line of the shoulder/upper legs. Do not leave any long coat - especially on the elbows! Trim all undesirable wisps of coat on the shoulders and upper arms to make "clean" lines.



by Logrus



by Logrus

Central Ontario



Newfoundland Dog Club

GROOMING YOUR NEWFOUNDLAND

HINDQUARTERS

Look from behind and trim the coat downwards from croup (rear) to feet.



by Logrus



by Logrus

Looking from the side cut excess coat under knees and hocks. Because Newfoundlands must have short heels trim coat starting from the hocks downward at a 45° angle, and the lower part vertically (see illustration).



by Logrus



by Logrus

Central Ontario

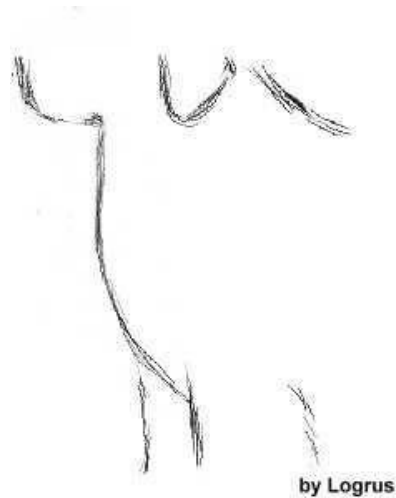
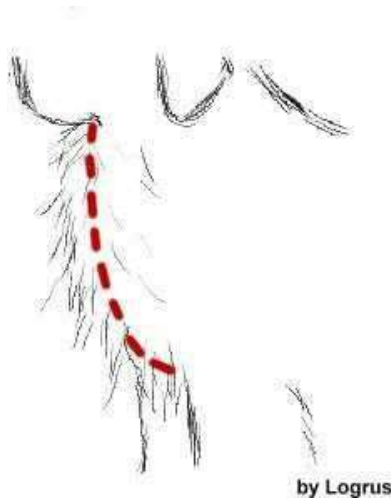


Newfoundland Dog Club

GROOMING YOUR NEWFOUNDLAND

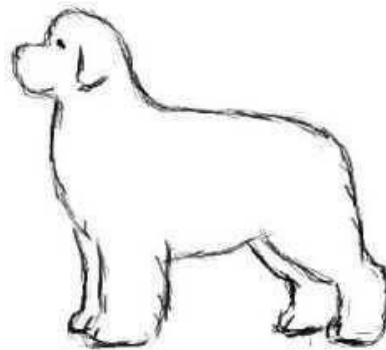
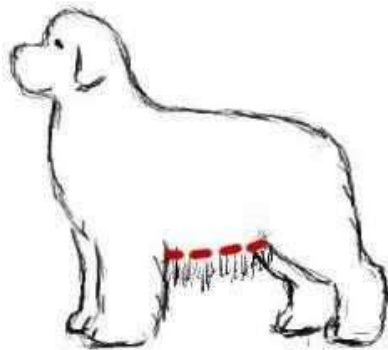
CHEST

Coat on the chest often grows too long and needs to be trimmed quite a bit. Be especially careful trimming the throat. Trim to a soft curve following the natural curves of the Newfs chest. Trim excess coat on the sides downwards from ears to the breast.



UNDERLINE

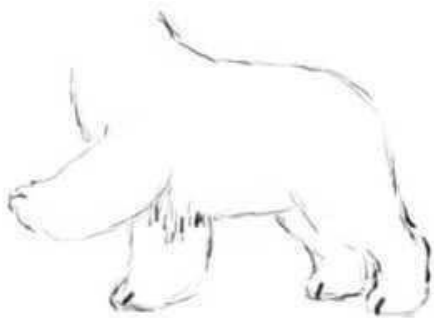
Start from the back going towards the front, left flank, then right flank. Trim coat on the belly and breast starting from the hindquarters towards the armpits. Don't cut too much or it will give the impression of legs that are too long or too short. The underline is supposed to be rounded and not cut straight across. Now examine the body of your dog from the rear. The shape of the underline must be rounded to the flanks, it is insufficient to trim only the underline.



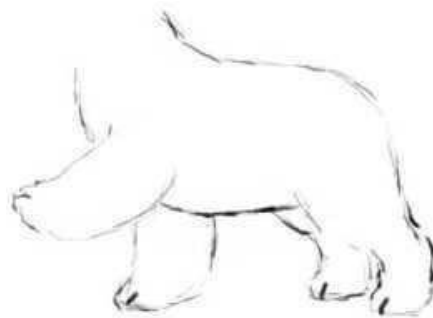


GROOMING YOUR NEWFOUNDLAND

Lift the foreleg and trim under the armpit blending the line of the chest with the underline. Repeat with the second foreleg.



by Logrus



by Logrus

When shaping the chest, follow the same rounded effect as you did with the underline. There should not be any blunt/straight angles. It should be a soft rounded appearance.



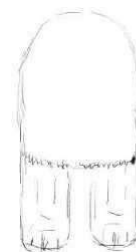
before

by Logrus



after

by Logrus



not like this!

No!

by Logrus



GROOMING YOUR NEWFOUNDLAND

TOPLINE

Sometimes the topline doesn't need trimming. If the coat on the neck and croup (rear) is very thick so it looks as if your dog has a mane and is too high in the croup, use the mars coat king to remove bulky undercoat (this is something the MCK is very good at).



before

by Logrus



after

by Logrus



before

by Logrus



after

by Logrus

Central Ontario



Newfoundland Dog Club

GROOMING YOUR NEWFOUNDLAND

TAIL

Trimming the tail is only necessary if it looks like a flag.



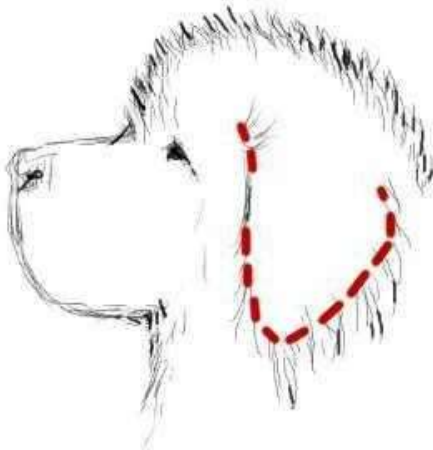
by Logrus



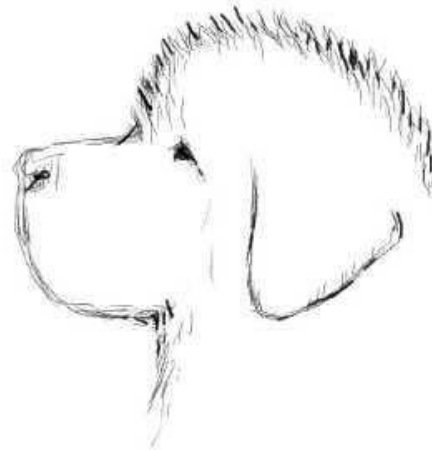
by Logrus

HEAD

Start from the ears. Trim the coat so it doesn't project past the edge of the ear, always combing downward. The tips of the ears must be rounded not pointed.



by Logrus

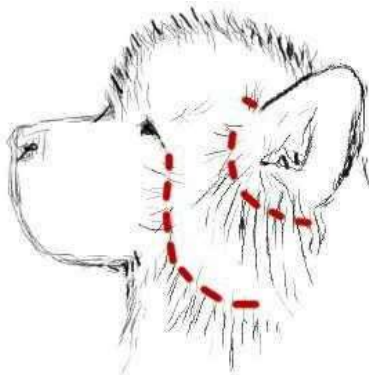


by Logrus

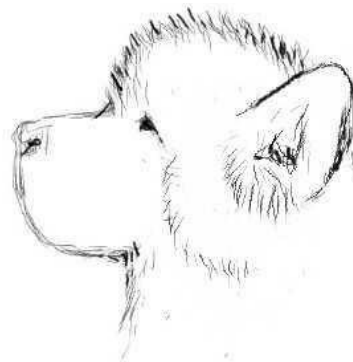
Central Ontario

Newfoundland Dog Club
GROOMING YOUR NEWFOUNDLAND

Trim under the ears. Trim any greasy coat growing under the ears, and coat on the cheek at the base of the ear.

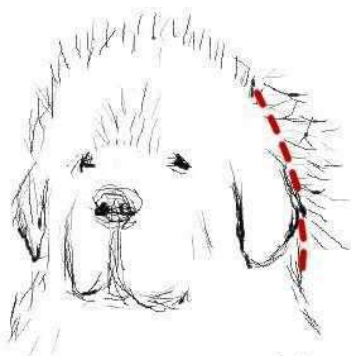


by Logrus

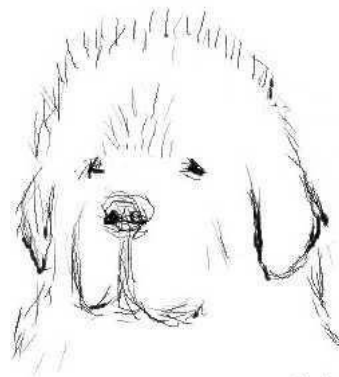


by Logrus

Often behind the ears the coat is soft and over-long, damaging the shape of head. Trim it downward from the earset.

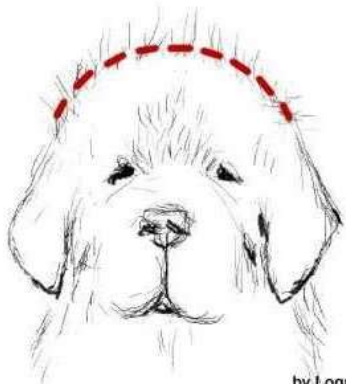


by Logrus



by Logrus

Comb coat on top of the head upward and trim to obtain a rounded shape.



by Logrus



by Logrus

