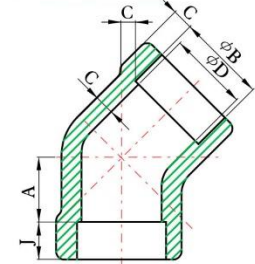
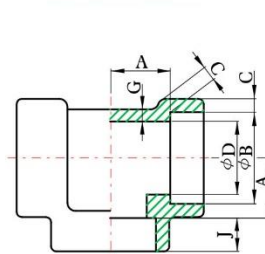
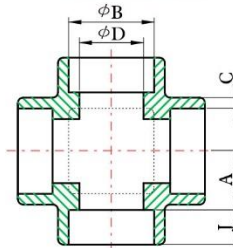
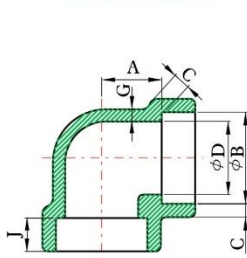


# FITTINGS HIGH PRESSURE ASTM A-182

## 90° ELBOW / CROSS / TEE / 45° ELBOW SOCKET WELD

cobrival.com



90° ELBOW

CROSS

TEE

45° ELBOW

### DIMENSIONS

unit : inch

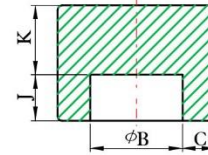
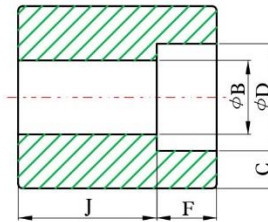
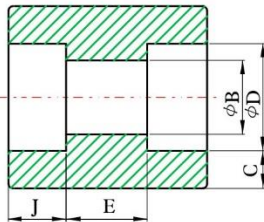
DN	Nom. Pipe Size	Socket Bore Dia. (2) B	Bore Diameter of Fitting (2) D		Socket Wall Thickness (1) C				Body Wall Thickness G		Depth of Socket Min. J
					Class Designation				Class Designation		
			Class Designation		3000		6000		3000	6000	
			3000	6000	Ave.	Min.	Ave.	Min.	Min.	Min.	
6	1/8	0.441	0.299	0.189	0.125	0.125	0.156	0.135	0.095	0.124	0.374
		0.425	0.240	0.126							
8	1/4	0.575	0.394	0.280	0.149	0.130	0.181	0.158	0.119	0.145	0.374
		0.559	0.335	0.220							
10	3/8	0.709	0.524	0.390	0.158	0.138	0.198	0.172	0.126	0.158	0.374
		0.693	0.465	0.331							
15	1/2	0.874	0.654	0.492	0.184	0.161	0.235	0.204	0.147	0.188	0.374
		0.858	0.591	0.433							
20	3/4	1.087	0.854	0.642	0.193	0.168	0.274	0.238	0.154	0.219	0.492
		1.071	0.795	0.583							
25	1	1.350	1.079	0.846	0.224	0.196	0.312	0.273	0.179	0.250	0.492
		1.335	1.020	0.783							
32	1-1/4	1.697	1.409	1.189	0.239	0.208	0.312	0.273	0.191	0.250	0.492
		1.681	1.350	1.130							
40	1-1/2	1.937	1.638	1.366	0.250	0.218	0.351	0.307	0.200	0.281	0.492
		1.921	1.579	1.307							
50	2	2.429	2.098	1.717	0.273	0.238	0.430	0.374	0.218	0.344	0.630
		2.409	2.035	1.657							
65	2-1/2	2.929	2.528		0.345	0.302			0.276		0.630
		2.909	2.409								
80	3	3.555	3.126		0.375	0.327			0.300		0.630
		3.535	3.008								
100	4	4.555	4.087		0.421	0.368			0.337		0.748
		4.535	3.965								



# FITTINGS HIGH PRESSURE ASTM A-182

## COUPLING / HALF COUPLING / CAP SOCKET WELD

cobrival.com



COUPLING

HALF COUPLING

CAP

## DIMENSIONS

unit : inch

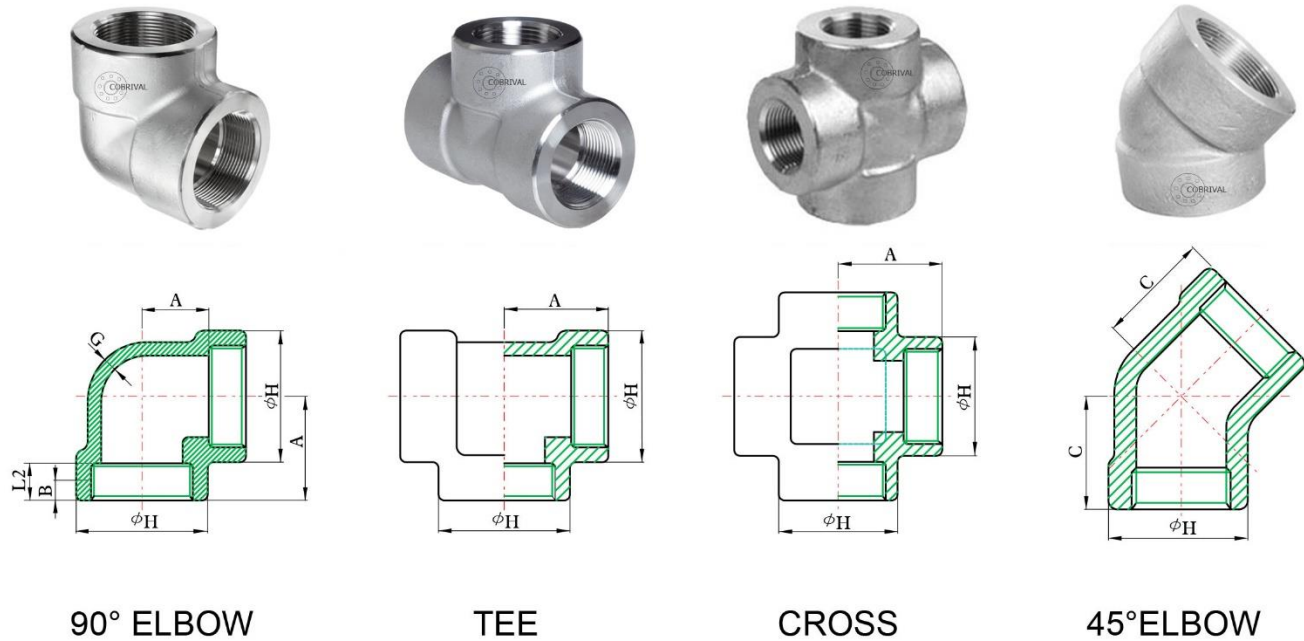
Center to Bottom of Socket-A				Laying Lengths		Tolerances ±			End Wall Thickness K Min.		Nom. Pipe Size	DN
90° Elbows Tees, Crosses		45° Elbows		Couplings E	Half Couplings F	A	E	F	Class Designation			
Class Designation	Class Designation	3000	6000						3000	6000		
0.433	0.433	0.315	0.315	0.256	0.630	0.039	0.059	0.039	0.189	0.252	1/8	6
0.433	0.531	0.315	0.315	0.256	0.630	0.039	0.059	0.039	0.189	0.252	1/4	8
0.531	0.610	0.315	0.433	0.256	0.689	0.059	0.118	0.059	0.189	0.252	3/8	10
0.610	0.748	0.433	0.492	0.374	0.886	0.059	0.118	0.059	0.252	0.311	1/2	15
0.748	0.886	0.512	0.551	0.374	0.945	0.059	0.118	0.059	0.252	0.311	3/4	20
0.886	1.063	0.551	0.689	0.492	1.122	0.079	0.157	0.079	0.378	0.441	1	25
1.063	1.260	0.689	0.807	0.492	1.181	0.079	0.157	0.079	0.378	0.441	1-1/4	32
1.260	1.496	0.807	1.004	0.492	1.260	0.079	0.157	0.079	0.441	0.500	1-1/2	40
1.496	1.614	1.004	1.122	0.748	1.614	0.079	0.157	0.079	0.500	0.618	2	50
1.614		1.122		0.748	1.693	0.098	0.197	0.098	0.618	0.748	2-1/2	65
2.244		1.260		0.748	1.752	0.098	0.197	0.098	0.748	0.882	3	80
2.618		1.614		0.748	1.890	0.098	0.197	0.098	0.882	1.118	4	100



# FITTINGS HIGH PRESSURE ASTM A-182

## 90° ELBOW / CROSS / TEE / 45° ELBOW THREADED

cobrival.com



90° ELBOW

TEE

CROSS

45° ELBOW

## DIMENSIONS

unit : inch

DN	Nom. Pipe Size	Center to End Elbows, Tees, Cross A		Center to End 45° Elbow C		Outside Diameter of Band H		Minimum Wall Thickness G		Length of Thread. Min. (1)	
		3000	6000	3000	6000	3000	6000	3000	6000	B	L2
6	1/8	0.827	0.984	0.669	0.748	0.866	0.984	0.125	0.250	0.252	0.264
8	1/4	0.984	1.102	0.748	0.866	0.984	1.299	0.130	0.260	0.319	0.402
10	3/8	1.102	1.299	0.866	0.984	1.299	1.496	0.138	0.275	0.358	0.409
15	1/2	1.299	1.496	0.984	1.102	1.496	1.811	0.161	0.321	0.429	0.535
20	3/4	1.496	1.732	1.102	1.299	1.811	2.205	0.170	0.336	0.500	0.547
25	1	1.732	2.008	1.299	1.378	2.205	2.441	0.196	0.391	0.579	0.681
32	1-1/4	2.008	2.362	1.378	1.693	2.441	2.953	0.208	0.417	0.669	0.709
40	1-1/2	2.362	2.520	1.693	1.732	2.953	3.307	0.219	0.436	0.701	0.724
50	2	2.520	3.268	1.732	2.047	3.307	4.016	0.281	0.476	0.748	0.756
65	2-1/2	3.268	3.740	2.047	2.520	4.016	4.764	0.301	0.602	0.929	1.138
80	3	3.740	4.173	2.520	3.110	4.764	5.748	0.348	0.655	1.020	1.201
100	4	4.488	4.488	3.110	3.110	5.984	5.984	0.440	0.735	1.091	1.299

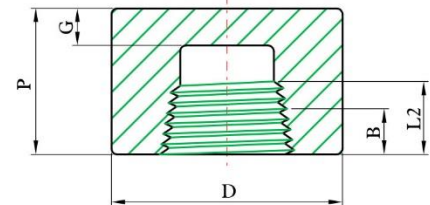
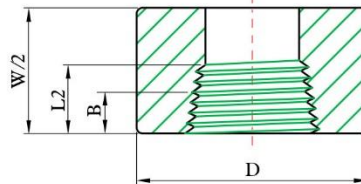
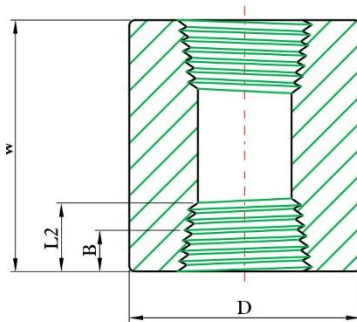




# FITTINGS HIGH PRESSURE ASTM A-182

## COUPLING / HALF COUPLING / CAP THREADED

cobrival.com



## DIMENSIONS

unit : inch

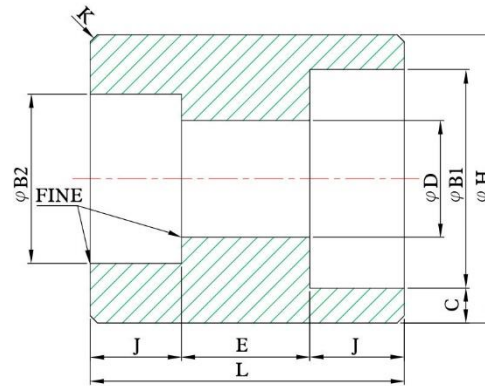
DN	Nom. Pipe Size	End to End Couplings W		End to End Caps P		Outside Diameter D		End Wall Thickness G Min.		Length of Thread. M in (1)	
		3000 / 6000	3000	6000	3000	6000	3000	6000	B	L2	
6	1/8	1.260	0.748	-----	0.630	0.866	0.189	-----	0.252	0.264	
8	1/4	1.378	0.984	1.063	0.748	0.984	0.189	0.252	0.319	0.402	
10	3/8	1.496	0.984	1.063	0.866	1.260	0.189	0.252	0.358	0.409	
15	1/2	1.890	1.260	1.299	1.102	1.496	0.252	0.311	0.429	0.535	
20	3/4	2.008	1.457	1.496	1.378	1.732	0.252	0.311	0.500	0.547	
25	1	2.362	1.614	1.693	1.732	2.244	0.382	0.441	0.579	0.681	
32	1-1/4	2.638	1.732	1.811	2.244	2.520	0.382	0.441	0.669	0.709	
40	1-1/2	3.110	1.732	1.890	2.520	2.992	0.441	0.500	0.701	0.724	
50	2	3.386	1.890	2.008	2.992	3.622	0.500	0.618	0.748	0.756	
65	2-1/2	3.622	2.362	2.520	3.622	4.252	0.618	0.748	0.929	1.138	
80	3	4.252	2.559	2.677	4.252	5.000	0.748	0.882	1.020	1.201	
100	4	4.764	2.677	2.953	5.512	6.260	0.882	1.118	1.091	1.299	



# FITTINGS HIGH PRESSURE ASTM A-182

## REDUCING COUPLING SOCKET WELD

cobrival.com



### DIMENSIONS

unit : inch

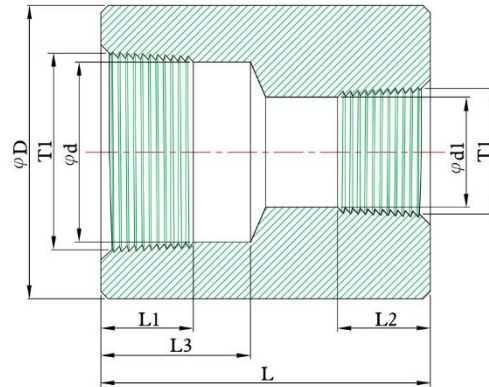
SIZE	B1	B2	D	C (Min)	H (Min)	J	E	L
1/4 x1/8	0.56	0.43	0.27	0.15	0.86	0.41	0.26	1.08
3/8 x1/8	0.70	0.43	0.27	0.16	1.02	0.41	0.26	1.12
3/8 x1/4	0.70	0.56	0.37	0.16	1.02	0.41	0.26	1.12
1/2 x1/8	0.86	0.43	0.27	0.19	1.23	0.49	0.37	1.36
1/2 x1/4	0.11	0.56	0.37	0.19	1.23	0.49	0.37	1.36
1/2 x3/8	0.86	0.70	0.50	0.19	1.23	0.49	0.37	1.36
3/4 x1/8	1.07	0.43	0.27	0.19	1.46	0.55	0.37	1.48
3/4 x1/4	1.07	0.56	0.37	0.19	1.46	0.55	0.37	1.48
3/4 x3/8	1.07	0.70	0.50	0.19	1.46	0.55	0.37	1.48
3/4 x1/2	1.07	0.86	0.62	0.19	1.46	0.55	0.37	1.48
1 x1/8	1.34	0.43	0.27	0.22	1.79	0.59	0.49	1.69
1 x1/4	1.34	0.56	0.37	0.22	1.79	0.59	0.49	1.69
1 x3/8	1.34	0.70	0.50	0.22	1.79	0.59	0.49	1.69
1 x1/2	1.34	0.86	0.62	0.22	1.79	0.59	0.49	1.69
1 x3/4	1.34	1.07	0.83	0.22	1.79	0.59	0.49	1.69
1-1/4 x1/8	1.69	0.43	0.27	0.24	2.17	0.67	0.49	1.85
1-1/4 x1/4	1.69	0.56	0.37	0.24	2.17	0.67	0.49	1.85
1-1/4 x3/8	1.69	0.70	0.50	0.24	2.17	0.67	0.49	1.85
1-1/4 x1/2	1.69	0.86	0.62	0.24	2.17	0.67	0.49	1.85
1-1/4 x3/4	1.69	1.07	0.83	0.24	2.17	0.67	0.49	1.85
1-1/4 x1	1.69	1.34	1.05	0.24	2.17	0.67	0.49	1.85
1-1/2 x1/8	1.93	0.43	0.27	0.25	2.43	0.69	0.49	1.89
1-1/2 x1/4	1.93	0.56	0.37	0.25	2.43	0.69	0.49	1.89
1-1/2 x3/8	1.93	0.70	0.50	0.25	2.43	0.69	0.49	1.89
1-1/2 x1/2	1.93	0.86	0.62	0.25	2.43	0.69	0.49	1.89
1-1/2 x3/4	1.93	1.07	0.83	0.25	2.43	0.69	0.49	1.89
1-1/2 x1	1.93	1.34	1.05	0.25	2.43	0.69	0.49	1.89
1-1/2 x1-1/4	1.93	1.69	1.38	0.25	2.43	0.69	0.49	1.89
2 x1/8	2.42	0.43	0.27	0.27	2.96	0.87	0.75	2.48
2 x1/4	2.42	0.56	0.37	0.27	2.96	0.87	0.75	2.48
2 x3/8	2.42	0.70	0.50	0.27	2.96	0.87	0.75	2.48
2 x1/2	2.42	0.86	0.62	0.27	2.96	0.87	0.75	2.48
2 x3/4	2.42	1.07	0.83	0.27	2.96	0.87	0.75	2.48
2 x1	2.42	1.34	1.05	0.27	2.96	0.87	0.75	2.48
2 x1-1/4	2.42	1.69	1.38	0.27	2.96	0.87	0.75	2.48
2 x1-1/2	2.42	1.93	1.61	0.27	2.96	0.87	0.75	2.48
2-1/2 x1-1/4	2.92	1.69	1.38	0.35	3.61	0.87	0.75	2.48
2-1/2 x1-1/2	2.92	1.93	1.61	0.35	3.61	0.87	0.75	2.48
2-1/2 x2	2.92	2.42	2.07	0.35	3.61	0.87	0.75	2.48
3 x1-1/2	3.54	1.93	1.61	0.38	4.30	0.87	0.75	2.48
3 x2	3.54	2.42	2.07	0.38	4.30	0.87	0.75	2.48
3 x2-1/2	3.54	2.92	2.47	0.38	4.30	0.87	0.75	2.48
4 x2	4.54	2.42	2.07	0.42	5.39	0.87	0.75	2.48
4 x2-1/2	4.54	2.92	2.47	0.42	5.39	0.87	0.75	2.48
4 x3	4.54	3.54	3.07	0.42	5.39	0.87	0.75	2.48



# FITTINGS HIGH PRESSURE ASTM A-182

## REDUCING COUPLING THREADED

cobrival.com



### DIMENSIONS

unit : inch

SIZE	T1-n	T2-n	L	D	d	d1	L1	L2	L3
1/4 x1/8	0.71	1.06	1.38	0.75	0.44	0.32	0.50	0.35	0.69
3/8 x1/8	0.71	1.06	1.50	0.87	0.57	0.32	0.52	0.35	0.75
3/8 x1/4	0.71	0.71	1.50	0.87	0.57	0.44	0.52	0.50	0.75
1/2 x1/4	0.55	0.71	1.89	1.10	0.68	0.44	0.68	0.50	0.94
1/2 x3/8	0.55	0.71	1.89	1.10	0.68	0.57	0.68	0.52	0.94
3/4 x3/8	0.55	0.71	2.01	1.38	0.89	0.57	0.70	0.52	1.00
3/4 x1/2	0.55	0.55	2.01	1.38	0.89	0.68	0.70	0.68	1.00
1 x3/8	0.45	0.71	2.36	1.73	1.12	0.57	0.83	0.52	1.18
1 x1/2	0.45	0.55	2.36	1.73	1.12	0.68	0.83	0.68	1.18
1 x3/4	0.45	0.55	2.36	1.73	1.12	0.89	0.83	0.70	1.18
1-1/4 x1/2	0.45	0.55	2.64	2.24	1.46	0.68	0.85	0.68	1.32
1-1/4 x3/4	0.45	0.55	2.64	2.24	1.46	0.89	0.85	0.70	1.32
1-1/4 x1	0.45	0.45	2.64	2.24	1.46	1.12	0.85	0.83	1.32
1-1/2 x1/2	0.45	0.55	3.11	2.52	1.70	0.68	0.85	0.68	1.56
1-1/2 x3/4	0.45	0.55	3.11	2.52	1.70	0.89	0.85	0.70	1.56
1-1/2 x1	0.45	0.45	3.11	2.52	1.70	1.12	0.85	0.83	1.56
1-1/2 x1-1/4	0.45	0.45	3.11	2.52	1.70	1.46	0.85	0.85	1.56
2 x3/4	0.45	0.55	3.39	2.99	2.17	0.89	0.87	0.70	1.69
2 x1	0.45	0.45	3.39	2.99	2.17	1.12	0.87	0.83	1.69
2 x1-1/4	0.45	0.45	3.39	2.99	2.17	1.46	0.87	0.85	1.69
2 x1-1/2	0.45	0.45	3.39	2.99	2.17	1.70	0.87	0.85	1.69
2-1/2 x1	0.31	0.45	3.62	3.62	2.58	1.12	1.18	0.83	1.81
2-1/2 x1-1/4	0.31	0.45	3.62	3.62	2.58	1.46	1.18	0.85	1.81
2-1/2 x1-1/2	0.31	0.45	3.62	3.62	2.58	1.70	1.18	0.85	1.81
2-1/2 x2	0.31	0.45	3.62	3.62	2.58	2.17	1.18	0.87	1.81
3 x1	0.31	0.45	4.25	4.25	3.21	1.12	1.27	0.83	2.13
3 x1-1/4	0.31	0.45	4.25	4.25	3.21	1.46	1.27	0.85	2.13
3 x1-1/2	0.31	0.45	4.25	4.25	3.21	1.70	1.27	0.85	2.13
3 x2	0.31	0.45	4.25	4.25	3.21	2.17	1.27	0.87	2.13
3 x2-1/2	0.31	0.31	4.25	4.25	3.21	2.58	1.27	1.18	2.13
4 x1-1/4	0.31	0.45	4.76	5.51	4.20	1.46	1.34	0.85	2.38
4 x1-1/2	0.31	0.45	4.76	5.51	4.20	1.70	1.34	0.85	2.38
4 x2	0.31	0.45	4.76	5.51	4.20	2.17	1.34	0.87	2.38
4 x2-1/2	0.31	0.31	4.76	5.51	4.20	2.58	1.34	1.18	2.38

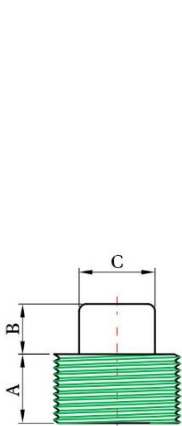




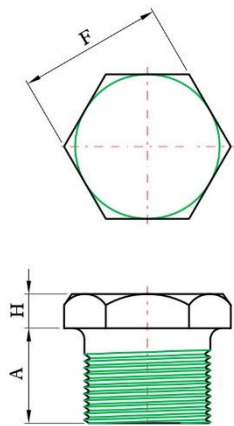
# FITTINGS HIGH PRESSURE ASTM A-182

## SQUARE HEAD PLUG / HEX HEAD PLUG / ROUND HEAD PLUG / HEX HEAD BUSHING THREADED

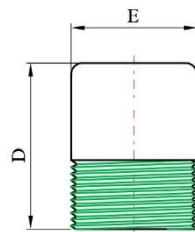
cobrival.com



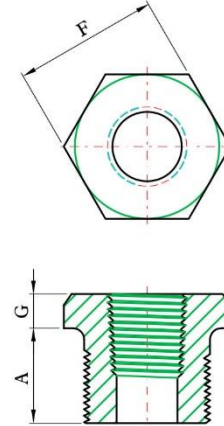
SQUARE HEAD PLUG



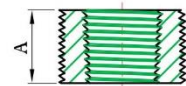
HEX HEAD PLUG



ROUND HEAD PLUG



HEX HEAD(1) BUSHING



FLUSH BUSHING

### DIMENSIONS

unit : inch

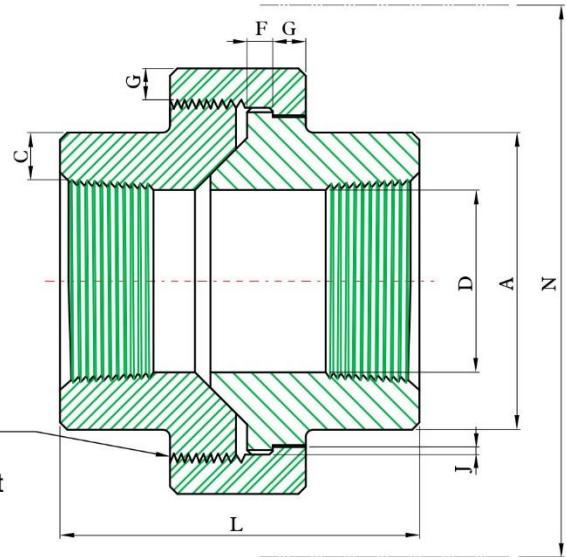
DN	Nom. Pipe Size	Length (Min.) A	Plugs Square Head		Plugs Round Head		Hex Plugs & Bushings		
			Height of Square (Min.) B	Width Flats (Min.) C	Nominal Diameter of Head E	Length (Min.) D	Width Flats (Nom.) F	Hex Height (Min.)	
								Bushing G	Plug H
6	1/8	0.394	0.236	0.276	0.394	1.378	0.433	----	0.236
8	1/4	0.433	0.236	0.394	0.551	1.614	0.630	0.118	0.236
10	3/8	0.512	0.315	0.433	0.709	1.614	0.709	0.157	0.315
15	1/2	0.551	0.394	0.551	0.827	1.732	0.866	0.197	0.315
20	3/4	0.630	0.433	0.630	1.063	1.732	1.063	0.236	0.394
25	1	0.748	0.512	0.827	1.299	2.008	1.417	0.236	0.394
32	1-1/4	0.827	0.551	0.945	1.693	2.008	1.811	0.276	0.551
40	1-1/2	0.827	0.630	1.102	1.890	2.008	1.969	0.315	0.630
50	2	0.866	0.709	1.260	2.362	2.520	2.559	0.354	0.709
65	2-1/2	1.063	0.748	1.417	2.874	2.756	2.953	0.394	0.748
80	3	1.102	0.827	1.614	3.504	2.756	3.543	0.394	0.827
100	4	1.260	0.984	2.559	4.488	2.992	4.528	0.512	0.984



# FITTINGS HIGH PRESSURE ASTM A-182

## UNION THREADED

cobrival.com



H-Thrd's  
Minimum 4 Full Thrd's  
Engagement Class 2A/2B Fit

## DIMENSIONS

unit : inch

Nom. Pipe Size	Pipe End Min. A	Wall Min. C	Water Way Bore D	Male Flange Min. F	Nut Min. G	Thrds. Per 25.4mm Max. H	Bearing Min. J	Length Assem. L	Clear Assem. Nut N
1/8	0.579	0.095	0.269 0.253	0.125	0.126	0.630	0.049	1.630	1.929
1/4	0.748	0.119	0.388 0.372	0.125	0.126	0.630	0.049	1.630	1.929
3/8	0.902	0.126	0.548 0.532	0.135	0.134	0.551	0.054	1.811	2.165
1/2	1.091	0.147	0.688 0.672	0.145	0.146	0.551	0.059	1.929	2.244
3/4	1.319	0.154	0.858 0.842	0.160	0.161	0.433	0.066	2.240	2.638
1	1.630	0.179	1.108 1.092	0.180	0.173	0.433	0.073	2.441	3.110
1-1/4	1.988	0.191	1.408 1.392	0.210	0.205	0.433	0.084	2.799	3.701
1-1/2	2.252	0.200	1.638 1.622	0.230	0.220	0.394	0.091	3.008	4.370
2	2.760	0.218	2.068 2.052	0.260	0.252	0.394	0.106	3.390	5.197
2-1/2	3.358	0.276	2.548 2.532	0.295	0.280	0.315	0.121	4.031	5.827
3	4.031	0.300	3.058 3.042	0.325	0.315	0.315	0.139	4.291	6.890

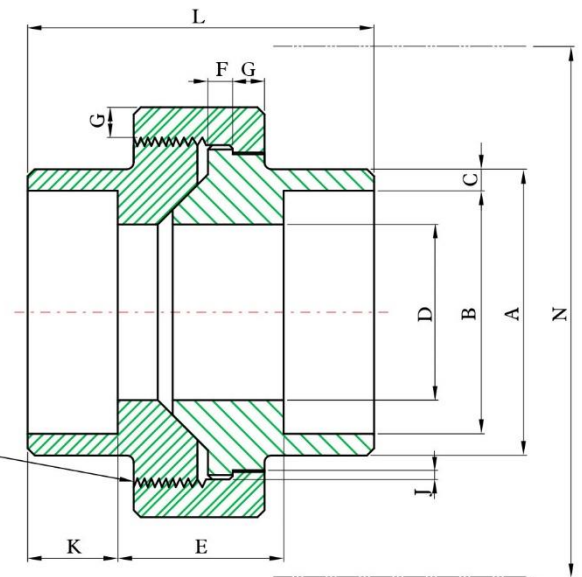




# FITTINGS HIGH PRESSURE ASTM A-182

## UNION SOCKET WELD

cobrival.com



H-Thrd's  
Minimum 4 Full Thrd's  
Engagement Class 2A/2B Fit

## DIMENSIONS

unit : inch

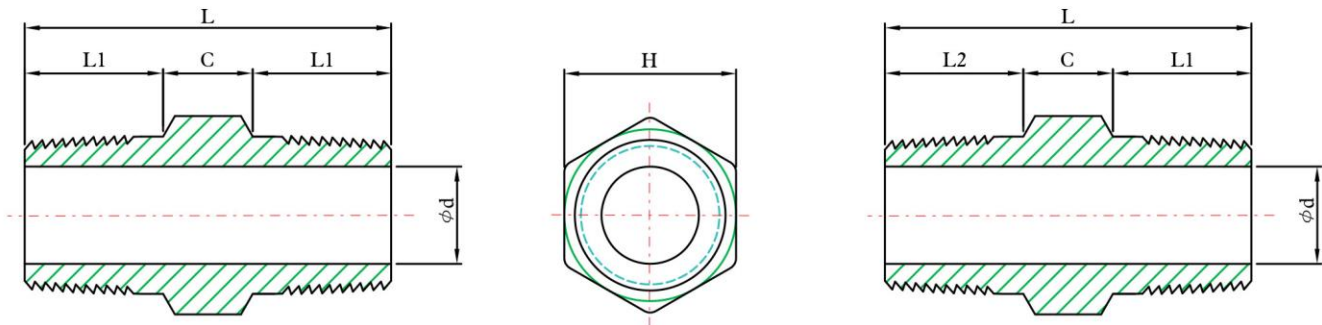
Nom. Pipe Size	Pipe End	Socket Bore Dia.	Socket Wall	Water Way Bore	Laying Length	Male Flange	Nut	Thrds. Per 25.4mm Max. H	Bearing	Depth of Socket Min. K	Length Assem. Nom. L	Clear Assem. Nut N
	Min. A	B	Min. C	D	E	Min. F	Min. G		Min. J			
1/8	0.858	0.430 0.420	0.125	0.269 0.253	0.882 0.748	0.125	0.125	0.630	0.049	0.378	1.630	1.929
1/4	0.858	0.560 0.550	0.130	0.388 0.372	0.882 0.748	0.125	0.125	0.630	0.049	0.378	1.630	1.929
3/8	1.020	0.700 0.690	0.137	0.548 0.532	1.059 0.811	0.135	0.135	0.551	0.054	0.378	1.811	2.165
1/2	1.228	0.860 0.850	0.160	0.688 0.672	1.059 0.811	0.145	0.145	0.551	0.059	0.378	1.929	2.244
3/4	1.461	1.070 1.060	0.168	0.858 0.842	1.252 1.000	0.160	0.160	0.433	0.066	0.500	2.240	2.638
1	1.791	1.340 1.330	0.195	1.108 1.092	1.350 1.031	0.180	0.175	0.433	0.073	0.500	2.441	3.110
1-1/4	2.161	1.680 1.670	0.208	1.408 1.392	1.598 1.280	0.210	0.205	0.433	0.084	0.500	2.799	3.701
1-1/2	2.421	1.920 1.910	0.218	1.638 1.622	1.661 1.339	0.230	0.220	0.394	0.091	0.500	3.012	4.370
2	2.961	2.420 2.410	0.238	2.068 2.052	1.791 1.469	0.260	0.250	0.394	0.106	0.622	3.390	5.197
2-1/2	3.610	2.920 2.900	0.301	2.548 2.532	2.429 2.051	0.295	0.280	0.315	0.121	0.622	4.031	5.827
3	4.299	3.550 3.530	0.327	3.058 3.042	2.512 2.110	0.325	0.315	0.315	0.139	0.622	4.291	6.890



# FITTINGS HIGH PRESSURE ASTM A-182

## NIPPLE HEX THREADED

cobrival.com



unit : inch / lb

Size NPS	C	L1	L	d	H	Unit Weight in Kgs
1/8	0.236	0.394	1.024	0.157	0.472	0.03
1/4	0.315	0.551	1.417	0.264	0.669	0.04
3/8	0.315	0.551	1.417	0.350	0.748	0.05
1/2	0.354	0.748	1.850	0.469	0.945	0.09
3/4	0.394	0.748	1.890	0.630	1.181	0.15
1	0.433	0.945	2.323	0.791	1.378	0.27
1-1/4	0.472	0.945	2.362	1.098	1.811	0.45
1-1/2	0.551	0.945	2.441	1.260	1.969	0.62
2	0.630	1.024	2.677	1.571	2.559	1.03
2-1/2	0.709	1.496	3.701	2.169	3.150	1.51
3	0.787	1.575	3.937	2.559	3.740	2.22
4	0.965	1.575	4.134	3.346	4.941	4.00

## DIMENSIONS

unit : inch / lb

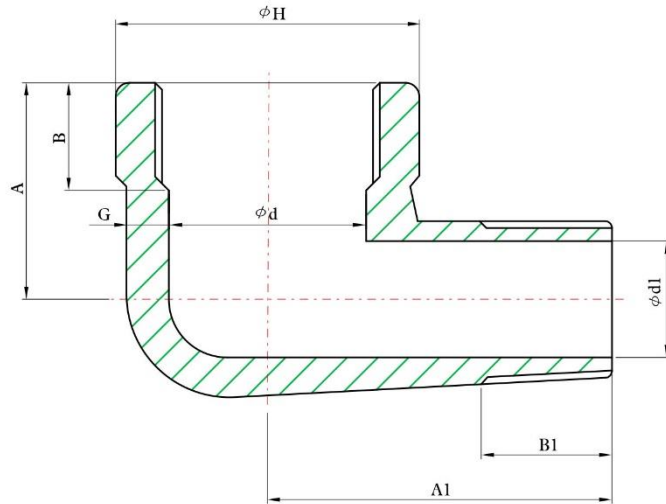
Size NPS	C	L1	L2	L	d	H	Unit Weight in Kgs
3/8 X 1/4	0.315	0.551	0.551	1.417	0.264	0.748	0.05
1/2 X 1/4	0.354	0.748	0.551	1.654	0.264	0.945	0.09
1/2 X 3/8	0.354	0.748	0.551	1.654	0.350	0.945	0.09
3/4 X 1/4	0.394	0.748	0.551	1.693	0.264	1.181	0.15
3/4 X 3/8	0.394	0.748	0.551	1.693	0.350	1.181	0.15
3/4 X 1/2	0.394	0.748	0.748	1.890	0.469	1.181	0.15
1 X 3/8	0.433	0.945	0.551	1.929	0.350	1.339	0.27
1 X 1/2	0.433	0.945	0.748	2.126	0.469	1.339	0.27
1 X 3/4	0.433	0.945	0.748	2.126	0.630	1.339	0.27
1-1/4 X 1/2	0.472	0.945	0.748	2.165	0.469	1.811	0.45
1-1/4 X 3/4	0.472	0.945	0.748	2.165	0.630	1.811	0.45
1-1/4 X 1	0.472	0.945	0.945	2.362	0.791	1.811	0.45
1-1/2 X 3/4	0.551	0.945	0.748	2.244	0.630	1.969	0.62
1-1/2 X 1	0.551	0.945	0.945	2.441	0.791	1.969	0.62
1-1/2 X 1-1/4	0.551	0.945	0.945	2.441	1.098	1.969	0.62
2 X 1	0.630	1.024	0.945	2.598	0.791	2.559	1.03
2 X 1-1/4	0.630	1.024	0.945	2.598	1.098	2.559	1.03
2 X 1-1/2	0.630	1.024	0.945	2.598	1.260	2.559	1.03
2-1/2 X 1-1/4	0.709	1.496	0.945	3.150	1.098	3.150	1.51
2-1/2 X 1-1/2	0.709	1.496	0.945	3.150	1.260	3.150	1.51
2-1/2 X 2	0.709	1.496	1.024	3.228	1.571	3.150	1.51
3 X 1-1/2	0.787	1.575	0.945	3.307	1.260	3.740	2.22
3 X 2	0.787	1.575	1.024	3.386	1.571	3.740	2.22
3 X 2-1/2	0.787	1.575	1.496	3.858	2.169	3.740	2.22



# FITTINGS HIGH PRESSURE ASTM A-182

## STREET ELBOW THREADED

cobrival.com



## DIMENSIONS

**3000Lbs**

unit : inch

Dim Nom. Pipe Size	H	A	A1	d	d1	G (Min)	B (Min)	B1 (Min)
1/4	0.984	0.874	1.248	0.441	0.276	0.130	0.315	0.406
3/8	1.299	1.000	1.500	0.571	0.354	0.138	0.354	0.409
1/2	1.496	1.126	1.622	0.618	0.512	0.161	0.433	0.535
3/4	1.811	1.374	1.874	0.823	0.630	0.170	0.492	0.543
1	2.205	1.752	2.268	1.047	0.787	0.196	0.571	0.681
1-1/4	2.441	2.000	2.626	1.378	1.102	0.208	0.669	0.709
1-1/2	2.953	2.126	2.811	1.610	1.181	0.219	0.709	0.724
2	3.307	2.500	3.307	2.067	1.575	0.281	0.748	0.760

**6000Lbs**

unit : inch

Dim Nom. Pipe Size	H	A	A1	d	d1	G (Min)	B (Min)	B1 (Min)
1/4	1.299	1.000	1.500	0.441	0.118	0.260	0.315	0.406
3/8	1.496	1.126	1.622	0.571	0.185	0.275	0.354	0.409
1/2	1.811	1.374	1.874	0.618	0.248	0.321	0.433	0.535
3/4	2.205	1.752	2.252	0.823	0.437	0.336	0.492	0.543
1	2.441	2.000	2.626	1.047	0.598	0.391	0.571	0.681
1-1/4	2.441	2.000	2.626	1.378	1.102	0.208	0.669	0.709
1-1/2	3.307	2.500	3.307	1.610	1.098	0.436	0.709	0.724

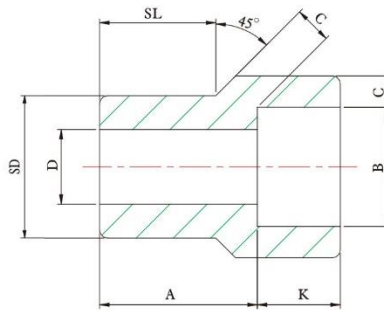




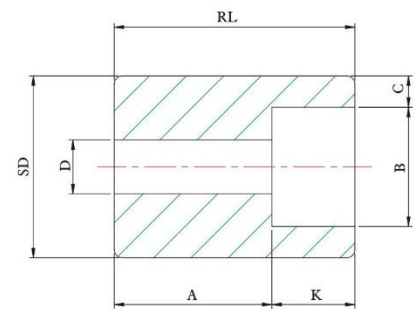
# FITTINGS HIGH PRESSURE ASTM A-182

## REDUCER INSERT

cobrival.com



TYPE 1



TYPE 2<sup>(1)</sup>

## DIMENSIONS

unit : inch

Nom. Pipe Size	Type (2)		Socket		Shank Dia. SD	Laying Length A		Bore D		Wall (Min) c		Length			
			Dia.	Depth (Min)								SL		RL (Min)	
	3M	6M	B	K		3M	6M	3M	6M	3M	6M	3M	6M	3M	6M
3/8 X 1/4	1	1	0.56	0.39	0.68	0.75	0.83	0.35	0.26	0.15	0.18	0.55	0.63	-	-
1/2 X 3/8	1	1	0.70	0.39	0.84	0.83	0.91	0.49	0.35	0.16	0.20	0.63	0.63	-	-
1/2 X 1/4	1	1	0.56	0.39	0.84	0.83	0.83	0.35	0.26	0.15	0.18	0.63	0.63	-	-
3/4 X 1/2	1	1	0.86	0.39	1.05	0.87	0.98	0.63	0.47	0.18	0.24	0.67	0.75	-	-
3/4 X 3/8	2	1	0.70	0.39	1.05	0.63	0.87	0.49	0.35	0.16	0.20	-	0.75	1.06	-
3/4 X 1/4	2	2	0.56	0.39	1.05	0.71	0.87	0.35	0.26	0.15	0.18	-	-	1.06	1.26
1 X 3/4	1	1	1.08	0.51	1.31	0.94	1.10	0.83	0.61	0.19	0.27	0.75	0.83	-	-
1 X 1/2	2	1	0.86	0.39	1.31	0.63	1.10	0.63	0.47	0.18	0.24	-	0.83	1.10	-
1 X 3/8	2	2	0.70	0.39	1.31	0.71	0.87	0.49	0.35	0.16	0.20	-	-	1.10	1.30
1 X 1/4	2	2	0.56	0.39	1.31	0.75	0.94	0.35	0.26	0.15	0.18	-	-	1.10	1.30
1-1/4 X 1	1	1	1.34	0.51	1.66	0.98	1.18	1.04	0.81	0.22	0.31	0.83	0.87	-	-
1-1/4 X 3/4	2	2	1.08	0.51	1.66	0.71	0.83	0.83	0.61	0.19	0.27	-	-	1.26	1.38
1-1/4 X 1/2	2	2	0.86	0.39	1.66	0.75	0.87	0.63	0.47	0.18	0.24	-	-	1.26	1.38
1-1/4 X 3/8	2	2	0.70	0.39	1.66	0.83	0.94	0.49	0.35	0.16	0.20	-	-	1.26	1.38
1-1/4 X 1/4	2	2	0.56	0.39	1.66	0.87	0.98	0.35	0.26	0.15	0.18	-	-	1.26	1.38
1-1/2 X 1-1/4	1	1	1.69	0.51	1.90	1.10	1.38	1.38	1.15	0.24	0.31	0.87	0.98	-	-
1-1/2 X 1	2	1	1.34	0.51	1.90	0.71	1.13	1.04	0.81	0.22	0.31	-	0.98	1.30	-
1-1/2 X 3/4	2	2	1.08	0.51	1.90	0.75	0.98	0.83	0.61	0.19	0.27	-	-	1.30	1.57
1-1/2 X 1/2	2	2	0.86	0.39	1.90	0.83	1.06	0.63	0.47	0.18	0.24	-	-	1.30	1.57
1-1/2 X 3/8	2	2	0.70	0.39	1.90	0.87	1.10	0.49	0.35	0.16	0.20	-	-	1.30	1.57
2 X 1-1/2	1	1	1.93	0.51	2.38	1.26	1.54	1.61	1.34	0.25	0.35	0.98	1.10	-	-
2 X 1-1/4	2	2	1.69	0.51	2.38	0.83	0.94	1.38	1.15	0.24	0.31	-	-	1.50	1.61
2 X 1	2	2	1.34	0.51	2.38	0.87	0.98	1.04	0.83	0.22	0.31	-	-	1.50	1.61
2 X 3/4	2	2	1.08	0.51	2.38	0.94	1.06	0.83	0.61	0.19	0.27	-	-	1.50	1.61
2 X 1/2	2	2	0.86	0.39	2.37	0.98	1.10	0.62	0.47	0.18	0.23	-	-	1.50	1.61

1. At the option of the manufacturer type 2 Reducers may be furnished in type 1 configuration .

2. 3M & 6M symbols 3000 and 6000 classes .

