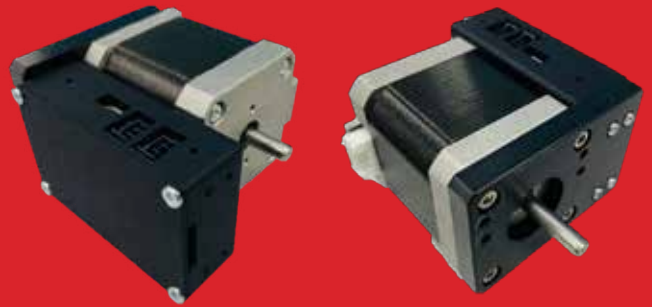


# PRECISION MOTION ACTUATORS

We offer a range of precision motion actuator modules with integrated controller for the most demanding motion control applications.

**NEMA-8****VMA1008****NEMA-17****VMA1017****Ultra High Precision****Compact****Daisy Chain Capability**

## ABOUT OUR PRODUCT

Featuring our innovative motion control algorithm and enhanced encoder resolution technology, our precision motion actuator modules with integrated controller are compact and easy to use for providing smooth and precise motion, making them ideal for a variety of applications with tight spaces and ultra-high precision, including micromanipulation, laser alignment, optical focusing, automated test & measurement, robotics & machine automation, and more.

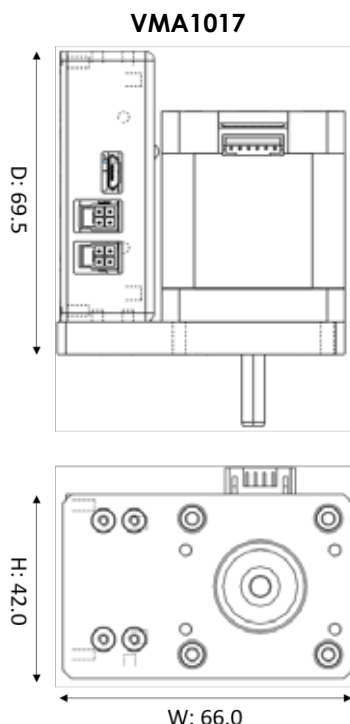
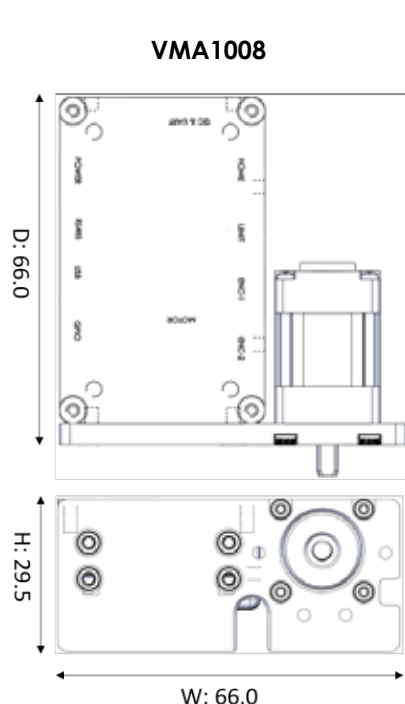
## Features

- Ultra High precision (Repeatability:  $<0.02^\circ$ )
- Compact with built-in motor controller
- Flexible with daisy-chain capability
- Support wide range of motorized linear and rotary stages
- Versatile to fit many applications
- Easy to use with supplied software
- Wide range of offering, with motor sizes from NEMA-8 to NEMA-23



## Specifications

	VMA1008	VMA1017
Motor Size	NEMA-8	NEMA-17
Motor Type	Stepper (2 phase, hybrid)	
Controller	Built In, Daisy-Chain with other V-BMB products	
Resolution	0.007°	
Accuracy (Unidirectional)	0.1°	
Repeatability	<0.02°	
Speed Resolution	0.0035°/sec	
Minimum Speed	0.0035°/sec	
Maximum Speed (No Load)	18000°/sec	
Input Voltage	12-48VDC	
Communication Interface	USB / RS-485 / TTL UART	
Daisy-Chain Capability	Yes	
Holding Torque, Nm	0.032	0.24
Motor Rated Current, A	0.5	1.5
Weight, kg	0.090	0.444
Dimension, WxDxH, mm	66 x 66 x 29.5	66 x 69.5 x 42



### Part Number and Ordering Information

VMA10□□  
Model      ↑  
Motor Size  
Range from NEMA-8 to NEMA23  
(08 to 23)

Motor Size	VMA10XX
NEMA-8	VMA1008 <sup>+</sup>
NEMA-10	VMA1010
NEMA-14	VMA1014
NEMA-17	VMA1017 <sup>+</sup>
NEMA-23	VMA1023

<sup>+</sup>Popular Models

