



## 5 Ridgeway Drive, Olivette 63132



Located in the award-winning Ladue School District, this modern Frank Lloyd Wright inspired home sits on a quiet cul-de-sac and features six bedrooms, 6 bathrooms (5 full 1, half), and approximately 6,000 square feet of living space, with a light filled finished lower level and a spacious three-car garage.

The modern designed floor plan features a 2 two story family room, 10-foot ceilings throughout the main level and 9-foot ceilings on the second floor, a luxurious 1<sup>st</sup> floor primary suite, custom cabinetry, and high-end finishes throughout. Rich hardwood flooring, detailed millwork, and designer lighting elevate every space.

This stunning new construction by Frontenac Homes blends modern design, comfort, and functionality - all within one of Olivette's most desirable neighborhoods. Every material and finish can be fully customized to reflect your personal style and taste.

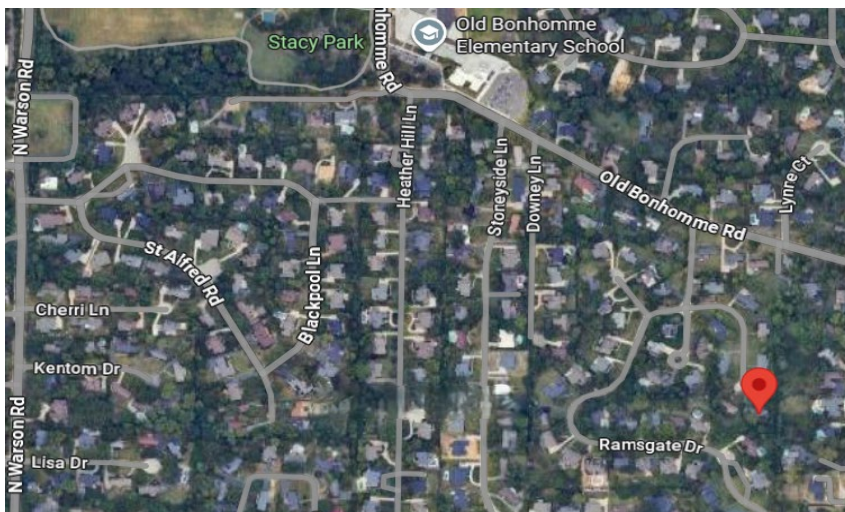
***For more information contact***

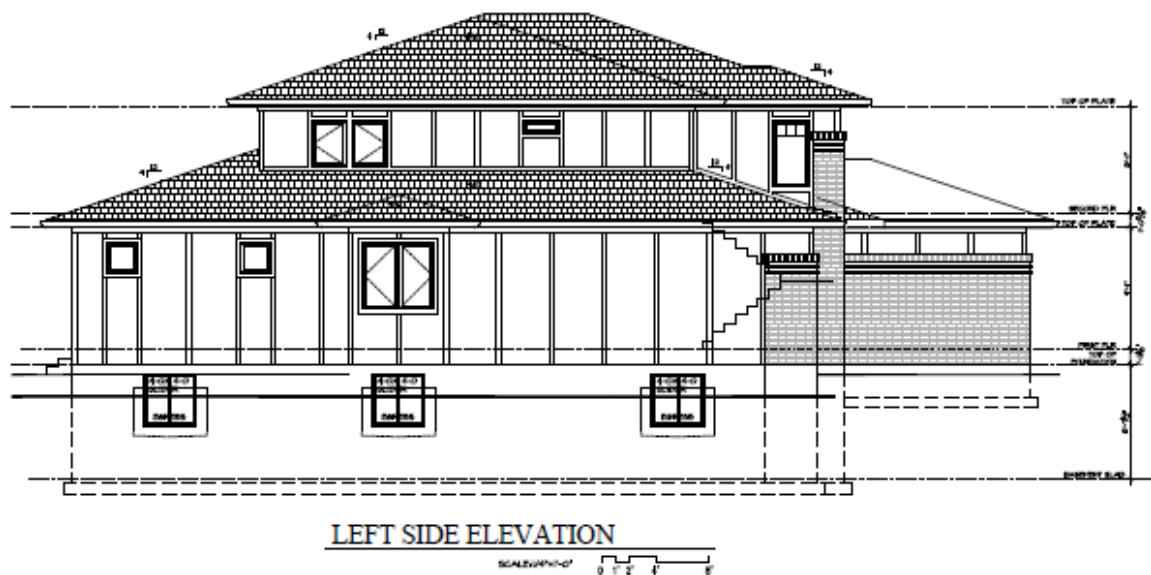
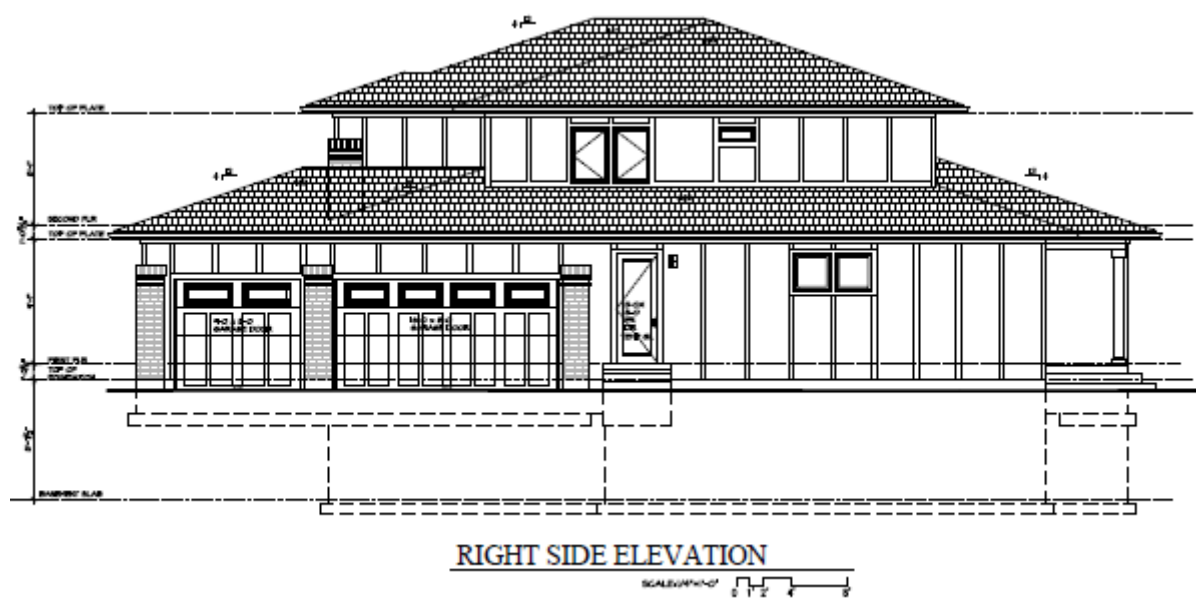
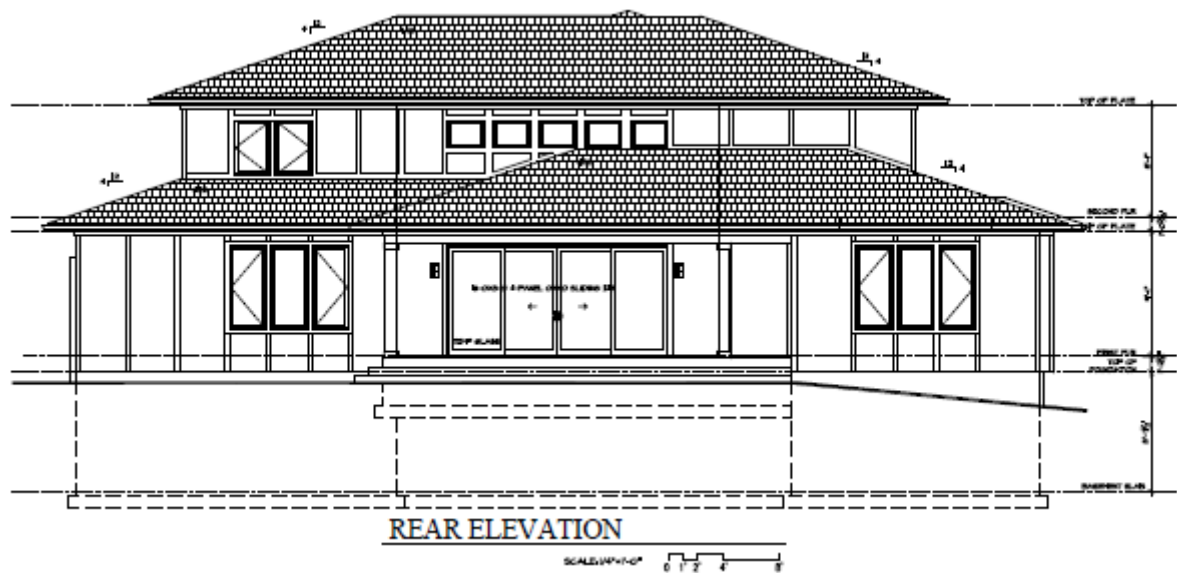
Pat Dolan

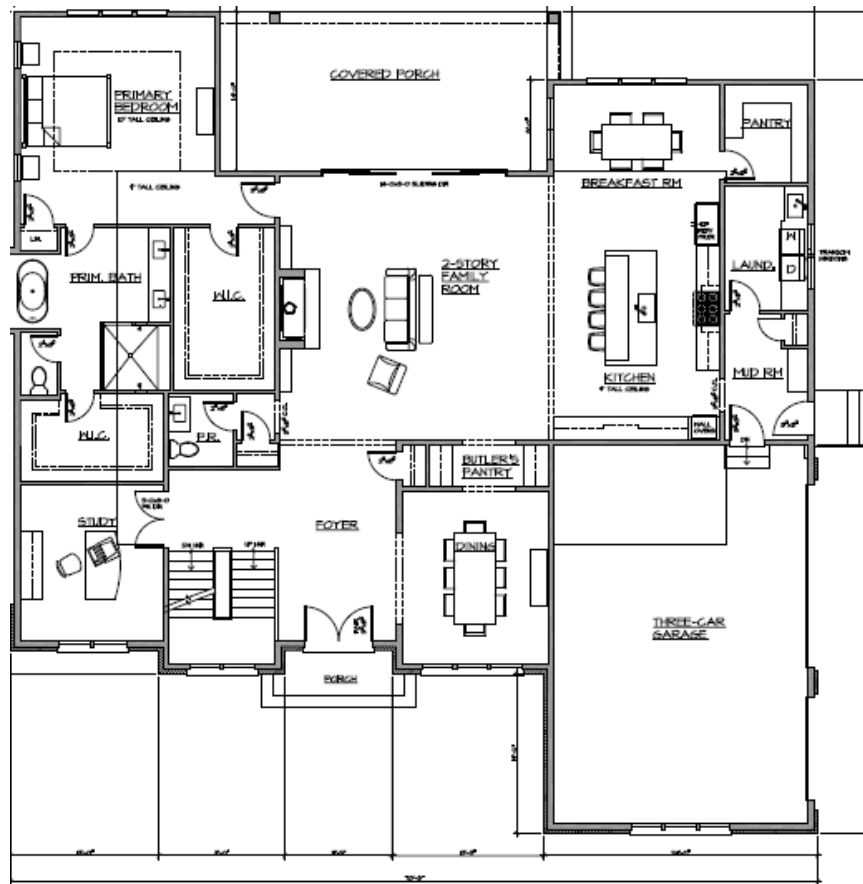
314 249-6337

[pat@frontenachomesstl.com](mailto:pat@frontenachomesstl.com)

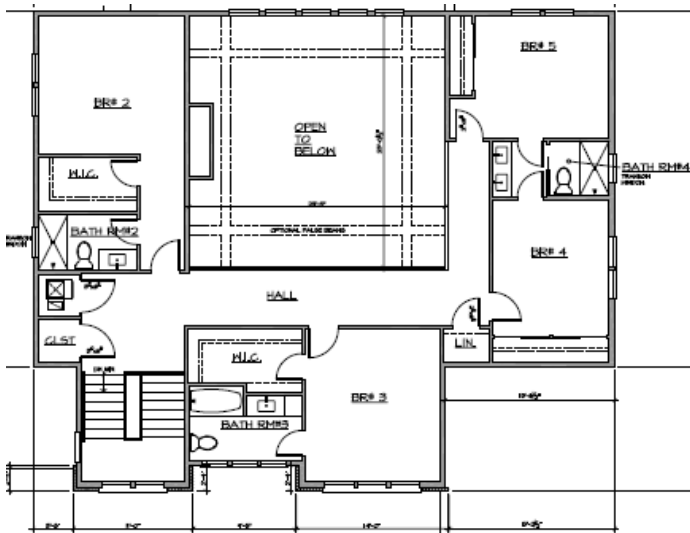
[FrontenacHomesStL.com](http://FrontenacHomesStL.com)



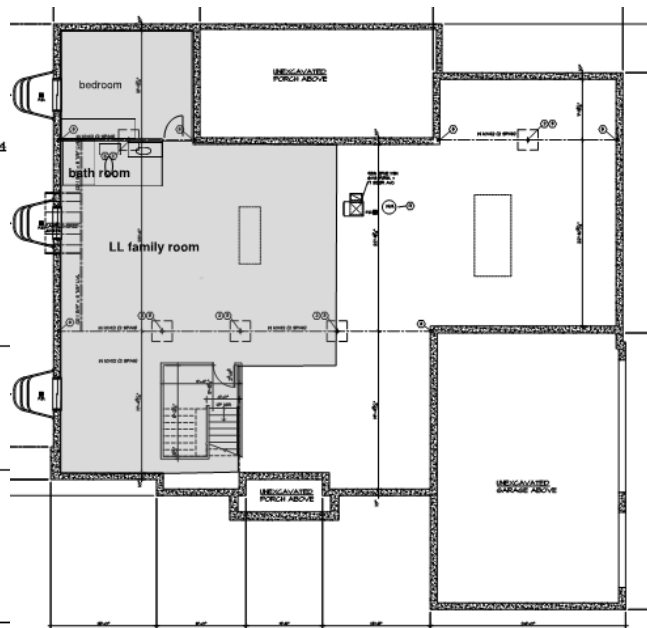




**FIRST FLOOR PLAN**  
 3,021 SQ. FT.  
 4,578 SQ. FT.  
 SCALE: 1/8" = 1'-0"



**SECOND FLOOR PLAN**  
 1,251 SQ. FT.  
 SCALE: 1/8" = 1'-0"



**FINISHED LOWER-LEVEL PLAN**