



I would like to take this opportunity to introduce our company Kona Interiors Ltd.

We are an interior fit-out company with extensive experience in residential and commercial market, specialising in dry-lining, SFS and plaster/tape and jointing finishes and fit out. We offer a supply and fit package or a labour only package should you wish to procure the materials yourself.

Our current turnover is approximately 2 million pounds. We have worked on numerous projects nationwide, ranging from commercial refurbishments to large scale new build packages.

We have built a strong and loyal workforce and work closely with the largest suppliers in the UK to ensure we are competitive across the various packages we undertake. Over the years our team have built up a sound knowledge of the construction industry and understand what is involved in making a project successful.

We believe we can offer our clients great value and exceptional delivery of any project we are involved in.

If you would like to discuss any future projects, please do not hesitate to contact us. We look forward to hearing from you in the near future.

Kind Regards,

Gabor Gyimesi
Operations Director
07912 105449
info@konainteriors.com

Tom Hughes
Commercial Director
07508 657163
tomhughes@konainteriors.com

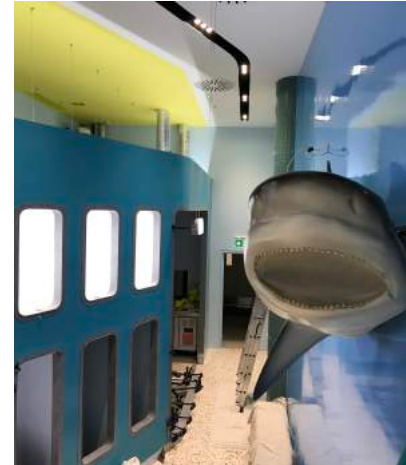


KONA Interiors

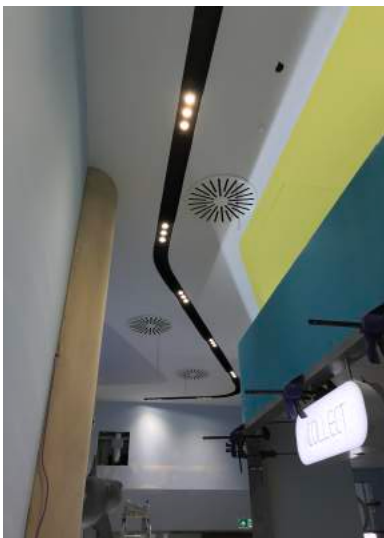


Main Contractor: GM Development
Project Value: £1.2M
Location: Kentish Town, London 47. Apartments

Supply and Fit Packages undertaken
Design, Supply and Fit SFS
Sheeting board, Insulation
Brick Tie Channel
Internal Drylining and Plastering

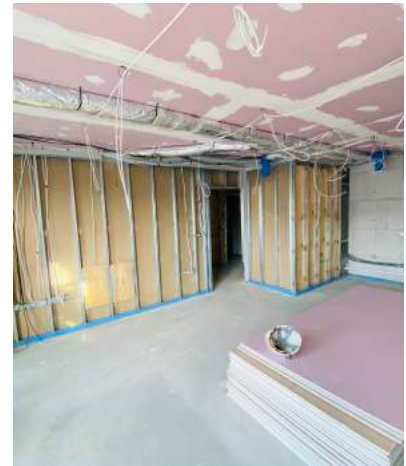


KONA Interiors



Main Contractor: J Mansfield Ltd
Project Value £35.000,00
Supply and Fit Packages undertaken

Metal Stud Partitions
Suspended Ceiling
T&J
Plastering
Ceramic Tiling
Painting Decorating



KONA Interiors



Main Contractor: Hyper Construction Ltd.
Project Value: £1.6M
Location: Ashford, 109 Apartments
Supply and Fit Packages undertaken
Metal Stud Partitions
Suspended Ceiling
T&J
Plastering
Screed
SFS

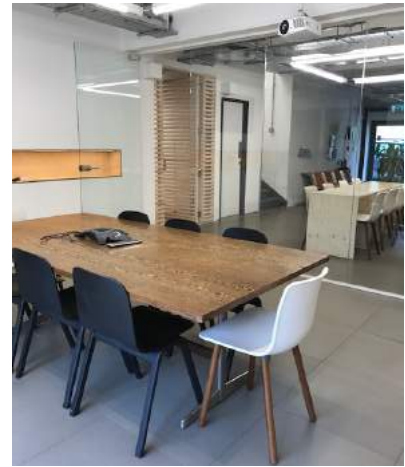


KONA Interiors



Main Contractor: ISG Retail Ltd
Project Value: £600.000
Location: Guildford, Tunsgate Centre

Supply and Fit Packages undertaken
Metal Stud Partitions
Suspended Ceiling
T&J
Plastering



KONA Interiors



Main Contractor: AJB Ltd.
Project Value: £350.000
Location: Hackney, London - Co Working
Supply and Fit Packages undertaken
Metal Stud Partitions
Suspended Ceiling
T&J
Plastering
Full M&E and Data
Raised Access Floors
Joinery



KONA Interiors



Main Contractor: ISG Retail Ltd.
Project Value: £275.000
Location: Epsom, London, Ashley Centre

Supply and Fit Packages undertaken
Metal Stud Partitions and Ceilings
Ceiling Rafts
Tape and Jointing



KONA Interiors



Main Contractor: ROOFF Ltd.
Project Value: £410.000
Location: Brentwood, London - 109 room
Student Accommodation

Supply and Fit Packages undertaken
Design Supply and Fit SFS
Sheeting Boards
Insulation
Brick Tie Channels



KONA Interiors



Main Contractor: Unibail-Rodamco-Westfield
 Project Value: £300.000
 Location: Westfield - London

Supply and Fit Packages undertaken
 Welfare facility for the extension of Westfield
 London

All trades from Sub floor to Decorating including
 Furnitures



KONA Interiors



Main Contractor: ROOFF Ltd.
Project Value: £270.000
Location: Tenda Rd. London 17 Apartments

Supply and Fit Packages undertaken
Metal Stud Partitions
Suspended Ceiling
T&J
Plastering
Load Bearing SFS