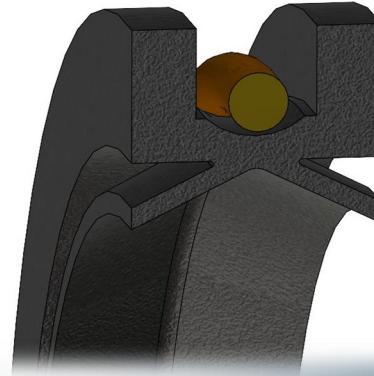




GM SMALL BLOCK REAR CRANK (SINGLE SPLIT SEAL)



The Chevy 350 engine is a 350 cubic inch (5.7-liter) small block V8 with a 4.00 and 3.48 inch bore and stroke. Depending on the year, make and model of a car, horsepower ranges from approximately 145 to more than 370. Rated at up to 380 pound-feet of torque.

At GS Engineering Group we aim to solve challenging sealing applications and design products for industries such as:

- Automotive** **Aerospace,**
- Industrial** **Oil and Gas**
- Medical** **Food and Beverage**
- MOTORSPORTS**

