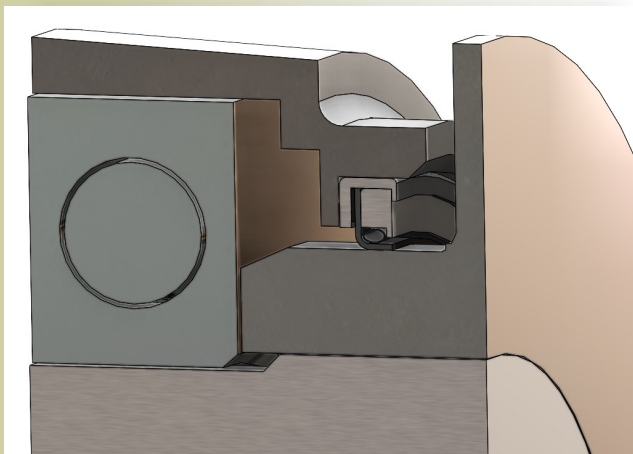




(RAT) Ram Air Turbine

A ram air turbine (RAT) is a **small wind turbine** that is connected to a hydraulic pump, or electrical generator, installed in an aircraft and used as a power source. The RAT generates power from the air-stream by ram pressure due to the speed of the aircraft.

Ram Air Turbines are used in emergencies. If both primary and auxiliary power sources fail, the (RAT) will provide power to vital systems such as flight controls, linked hydraulics, and flight critical instrumentation.



- 7,000-12,000 RPM
- Hydraulic 10GPM @ 2850 PSI
- Electric 7.5 Kva
- Temp: @ .8 Mach or higher 30°C above OAT



At GS Engineering Group we aim to solve challenging sealing applications and design products for industries such as:

- | | | |
|--------------------|------------------|--------------------------|
| Automotive | Aerospace | Industrial |
| Oil and Gas | Medical | Food and Beverage |

