



War Bonnet Region

# WAR WHOOOP

July - August 1989



**Porsche Club Of America**

## On the Cover

Two War Bonnet members in action at the recent Swim Party. Rob Lewis and Ron McAtee are staying cool in the 100 degree heat, by staying wet. Your editor, yours truly followed the example and spent lots of the time in the water. After the meal I even broke one the rules of swimming and eating, I did not wait 30 minutes before entering the water. I just like to live dangerously.

Thanks Rob and Cindy for opening your house and pool to the club.

Editor : Glen Hoskins

3833 N.W. 32nd

Oklahoma City OK 73112

405/942-3743 Work; 405/947-6375 Home

The **WAR WHOOP** is the official publication of the War Bonnet Region, Porsche Club of America. Opinions expressed herein do not necessarily represent the official position of the region or the Porsche Club of America. The **WAR WHOOP** is published bi-monthly. Material submitted for publication must be received by the 15th of any odd numbered month. Associate regions, by this statement, are authorized to use material in this publication provided proper credits are included.

Advertising rates:

Full Page \$30.00 per issue

Half Page \$20.00 per issue

Design and concept of add. *call for quote*

Forward advertising inquiries and all other

material to Glen Hoskins 3833 N.W. 32nd

Oklahoma City, OK. 73112 or call Glen Hoskins

at the phone numbers listed above.

## Table of Contents

Page 4	News of Interest
Page 5	Not a Porsche!
Page 7	John Paterek
Page 9	Membership Report
Page 11	Swim Party
Page 12	The call goes out
Page 13	Quaker State Indy Car
Page 23	Rennsport Flyer
Page 17&19	News from PCNA
Page 21	Great Plains Flyer
Page 22	Calendar of events



1989

War Bonnet Region  
**OFFICERS AND CHAIRMEN**

**President**

Al Lang  
P.O. Box 20766  
Oklahoma City OK 73156  
405/755-0208

**Membership**

Glen Hoskins  
3833 N.W. 32nd St.  
Oklahoma City OK 73112  
405/942-3743

**Vice President**

Rob Lewis  
10408 Rycroft Rd.  
Oklahoma City OK 73162  
405/722-2050

**Activities**

Rob Lewis  
10408 Rycroft Rd.  
Oklahoma City OK 73162  
405/722-2050

**Treasurer**

Bob Miller  
4504-C West Gaylord Dr.  
Oklahoma City OK 73162  
405/752-5032

**Secretary**

Don Scott  
2631 Cedric Circle  
Lawton, OK 73505  
405/355-7144

**Past President**

Kai Gerkey  
2645 NW 14th  
Oklahoma City OK 73107  
405/525-8577

**Historian**

Greg Hack  
3890 Whispring Hts.  
Edmond, OK 73034  
405/340-0000

**Autocross Chairman**

Kai Gerkey  
2645 NW 14th  
Oklahoma City OK 73107  
405/525-8577

**Tech Registrar**

Cathy Trapp  
315 NW 15th  
Oklahoma City, OK 73103  
405/524-6262

# **Greeting's War Bonnet Region PCA members**

*from*

Bob Moore Porsche / Audi  
Your Factory Authorized  
Porsche / Audi Dealer

## **Bob Moore**

*is one of the most respected names in the Automobile  
industry. Our sales staff is new to  
Porsche, but our service and parts  
department is one of the most experienced anywhere.*

*Please accept our invitation to come in and  
let us meet you. You'll be glad you did.*

*Respectfully,*

**Bob Moore** PORSCHE / AUDI

13th and N. Broadway  
405/ 232-3521



# News of Interest

---

The new Porsche F1 engine is in demand by at least three F1 teams. Brabham, Lotus and Onyx. The new engine development is priced at 45 Million dollars, and Porsche needs customers willing to share the cost before work can continue. The 3.5-liter engine will bring Porsche back to F1 to take over where the Tag-Turbo engine left off.

Dr. Ulrich Bez, technical director at Porsche AG. has confirmed the factories commitment to Indy car racing. There were rumors that Porsche's interests in building an F1 engine could hurt the Indy effort, but Bez said Porsche not only working on it's 1990 engine it is even planning for 1992. The only worry is continued sponsorship. Indy Car team manager Derrick Walker said "As far as I know, the program will continue through 1991, but the situation is the same as it's always been; we need sponsorship of one type ore another to continue."

The remaining races for the CART/PPG Indy Car World Series are:

<b>Date:</b>	<b>Event:</b>	<b>TV Coverage:</b>
Aug 20th	Pocono 500 Long Pond, PA	NBC (same day)
Sept. 3rd	Mid-Ohio Lexington, OH	ESPN (live)
Sept. 10th	Road America Elkhart Lake, WI	ESPN (live)
Sept. 24th	Pennsylvania International Nazareth, PA	ESPN (live)
Oct. 15th	Laguna Seca Monterey, CA	ESPN (live)

## NOT A PORSCHE!

---

When I served Uncle Sam as a soldier in Germany I came across vehicles that I as a country boy from Oklahoma could never have imagined. Of course, in those days growing up I only read the Hot Rod type magazines and never picked up one that had to do with sports cars. But I'm straying from the story.

We have all seen the VW's that were water tight and had extended tail pipes and could be seen in pictures going through small lakes. Well, meet the Amphicar. The first one I saw was going down a boat ramp at a lake in Berlin, then on out into the lake and making good way. Now that was a different car! It had a 82.7 inch wheel base and weighed 2312 pounds. It was a convertible with tiny cadillac fins and two propellers under the rear and an exhaust pipe just below the top edge of the trunk lid. The car was assembled in Germany, starting in 1960, and distributed in the U.S. until 1967. Government safety regulations put it out of business here.

In 1963 the American distributor of Amphicar had a sales folder titled "Welcome Aboard! Amphicar" The cover showed the car

in the water with the top down and when you opened it up it was on land with the top up.

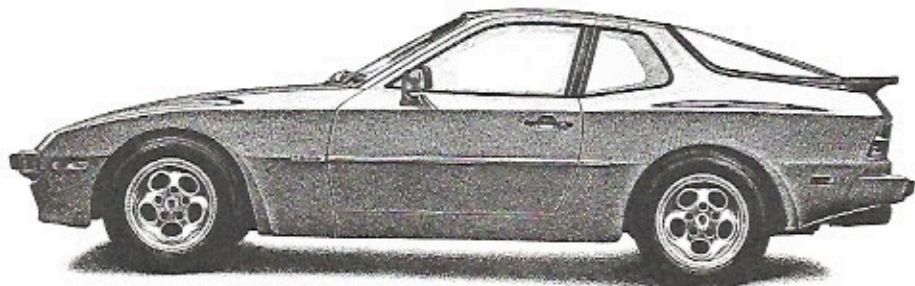
What I found interesting about the Amphicar was that when in the water the front wheels served as rudders. Believe me, the car rode quite low in the water with the water line at the rub rail. The doors had double seals and had to be well closed to avoid dangerous leaks. The same precaution applied to the propeller shaft seals and any other point where water might seep in. The car came equipped with a bilge pump that could handle 6 gal. per minute, a 4 cylinder Triumph engine with 70 CID, and 43 great horses that could get it up to 70-75 mph on land and 6.5 knots in the water. In those days the car sold for \$3167 in the U.S. It has been more years than I can remember since I have seen one. I did get a brief ride on that lake in Berlin in the Amphicar. I walked up to the German owner and did the tourist "Gee Wiz" and after thirty minutes of listening to his "better English than my poor German" I got that first time thrill of something different.

By Al Lang

## Oklahoma's newest PORSCHE dealer.

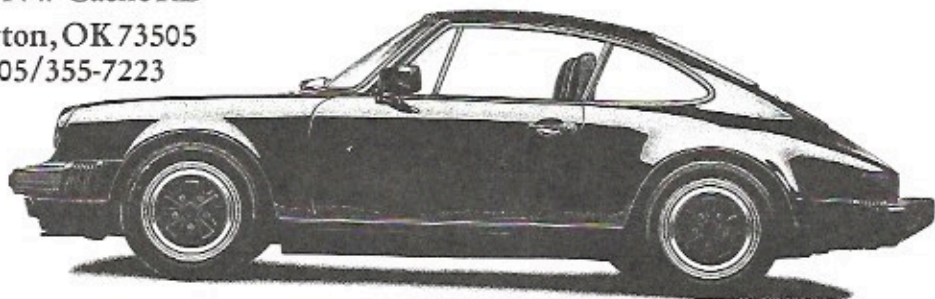
Professor Ferry Porsche designed the first car to bear his name in 1948. Since then, nothing much has changed. Every Porsche is built with the same devotion to innovation. With the same uncompromising approach to engineering. And with the same design objective: undiluted driving exhilaration. All of this will become thrilling clear when you test drive any of the new Porsches at your authorized Porsche dealer. And whichever car you finally choose, you'll inevitably come to the same comforting realization that every Porsche driver comes to: Porsches may change. What makes them Porsches doesn't.

### Wilmes Imports



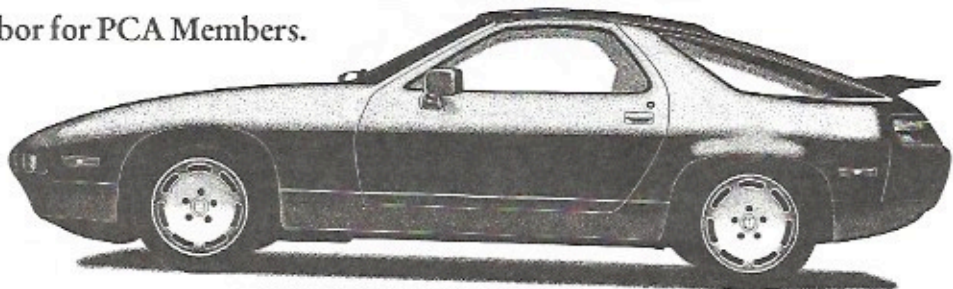
*Porsche 944S*

4330 NW Cache RD  
Lawton, OK 73505  
405/355-7223



*Porsche 911 Coupe*

10% discount on Parts and  
labor for PCA Members.



*Porsche 928S4*

# From John Paterek at WB Tech

---

A year or two ago John Paterek provided some great information on products to use on your Porsche that will do what you want done but not more. Below you'll find listed the product, address (if you can't find it locally) and description of what it does.

**Blue Magic** - Part #112 polishes all paint, aluminum, rear plastic windows, mild abrasive. Box 3145 Long Beach, Ca. 90803

**Buff-Eez** - mild buffing compound removes oxidation, car wash marks, pre cleaning prior to waxing. #6355 any NAPA store

**Zymol** - Abrasive free wax product works well on any color (no petro-chemicals) PO Box 720 Branford, Ct. 06405 Ph203-481-4599

**P21S Wheel Cleaner** - Only alloy cleaner approved by Porsche AG, low ph-acid free cleaning, German made. Brookside imports 106 Water St. West Haven Ct. Ph 203-932-8431

**Turtle Black Top Wax** - #T-333 for Targa tops, black trim on bumpers and rocker mouldings.

**Leathereque** - leather and vinyl dye, polymer based to recolor headliner, door and seat panels. Clausen Co. 1055 Kings George Rd. Fords, N.J. 08863

**Putt George LTD.** German Carpet, leather, vinyl and top materials at competitive prices. PH 914-353-0358

**Masury Satin Black** - 3863-6 correct color and texture for engine sheet metal, black out trim, body panels chassis paint for 356 - early 911's.

**Wurth Fasteners** - metric bolts and fasteners, underbody schutz, spray lacquers, anti corrosion products, rubber and interior care. Ph 800-526-5228

**Sikkens of America** - urethane primers, top and clear coat acrylic urethane enamels, autobase colors and autocryl top coats match OEM Porsche. 6455 Carter Blvd. Suite 100 Norcross, Ga. 30071

**3M Adhesive and Coating Div.** - top and trim adhesive #08046, 1500 grit wet or dry #01978.

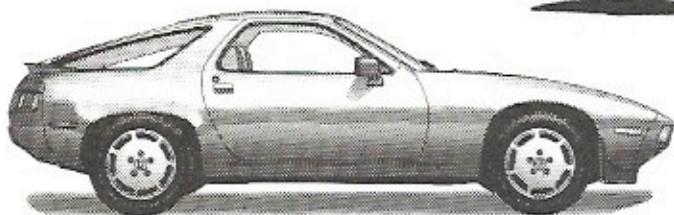
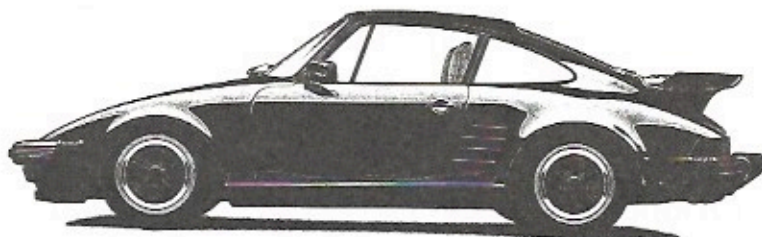
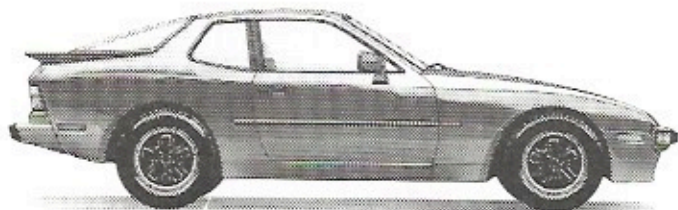
Questions on these or other products can be answered by writing John at 13 Commerce St. Chatham, NJ 07928 or Ph 201-635-5924

Al Lang





# B·R·I Imports



## **Specializing in Porsche Sales and Service since 1970**

**10 % discount on most Parts and  
labor for PCA members.**

**We want your business!**

**6920 N. Broadway Ext.  
Oklahoma City, OK 73116  
405/848-1961**

# Membership Report

---

We are lucky to have seven new members in the last three months. The list below is just like your Turbo Phone. The second name listed is the affiliate or family member.

Jerry Bryan  
Julie Bryan 4908 NW 62nd Terr.  
Oklahoma City OK 73122  
911 Cabro  
405/722-8705

Vic Cleveland  
1837 Westminster Pl.  
Oklahoma City OK 73120  
405/843-5747

Robert Cummings  
Linda Cummings  
1718 Hillcrest Dr.  
Norman OK 73071  
405/366-7083

Danny Harris  
80 Lake Charles Dr.  
Nashville AR 71852  
501/845-1873

Charles Hatley  
Fran Hatley  
HC 32 #4 Brownwood Circle  
Lawton OK 73501

Dennis McIntyre  
Joan C. McIntyre  
4119 Greenwood Pl.  
Enid OK 73703  
405/242-3553

James Sykora  
5021 NW 59th  
Oklahoma City, OK 73122  
79 928



# MIRROR *Finishes*

*Exclusively*

**Porsche**

Downdraft Spray Booth  
for Dust-Free Paint

We use Glasurit Products  
The Original Porsche Paint

Complete or partial refinishing  
Expert Color Matching



Hard or light collision repair on  
Blackhawk equipment  
The Factory Authorized System

Conversions  
and  
Restorations

References Available Upon Request

Mike Lindsey

530 N. Meridian  
405/947-4330

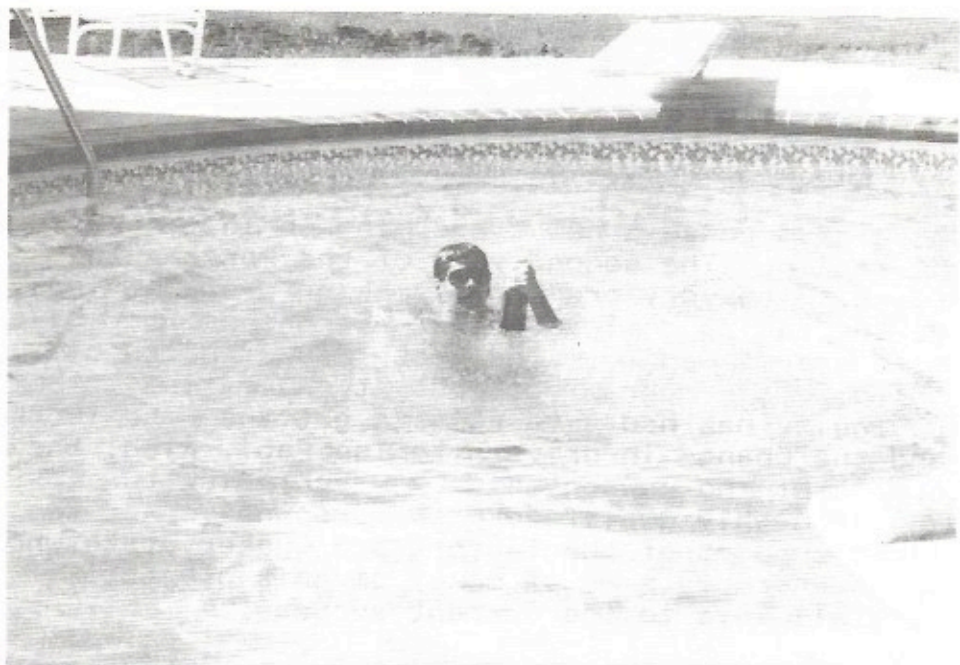
PCAMember

# The Swim Party

On August 5th the War Bonnet Region had a nice event at Rob and Cindy Lewis's house. For all of you who did not make it, you missed a nice afternoon. The pool was great, the food was even better. But best of all, the people who came out to join in a club activity.

What will it take to get better participation? I don't know but if you have any ideas please let any of the club officers know.





## The call goes out

---

The Region is in need on interested individuals that will offer a modest amount of time on club work. If you won't speak up for yourself, inform us of someone else that you believe might be willing, and we will contact them and convince them.

A few fine members have provided the club some direction over the last few years and it is time for some new faces new ideas and new directions. If you sit back and say to yourself "Oh, someone else

will do it." then you should think again. It is your region, and if you don't care if it goes inactive because of a lack of participation then it will follow that course.

The work is not difficult, it does not involve long hours, it is not dangerous, in fact you will enjoy it. If you have read this far you really should call Al, Rob or Glen to find out what you might help with.

Al Lang



You can almost sense a new era coming on in the world of Porsche racing. The second year of the Porsche Indy car has proved to be very productive making great strides towards the racing dominance that Porsche patrons have become so accustomed to. The recent success can be attributed to a number of collaborations. First, the Porsche engine has had some time to get the kinks worked out, and the change in drivers to Teo Fabi. Also, the development of the new chassis by March, plus the building of highly qualified crew personnel. And the relentless support of the factory and Quaker State who have spent enormous sums of money on this project. These are all keys to the current success.

The result has been a season with numerous top ten finishes and several top five finishes, putting Teo Fabi in the top five drivers in the CART/PPG Indy car point standings to date. Considering the lack of years under Porsche's belt in this type of racing, only having one car, and the quality and experience of the competition, this is quite an achievement. A true tribute to the racing legacy of Al Holbert who spent the last part of his life dedicated to this project. The addition of several road courses has help the Porsche team in that Fabi is an excellent road course driver, but the progress to date cannot be overlooked.

The final steps needed to become a power house in Indy car racing are not easy ones. Like most things, the initial progress is much easier than the progress it takes to rise to number one. But the Porsche Indy project is definitely on line. If some of the rumors are true about additional cars and world class drivers joining the Porsche cause, the CART/PPG Indy world is in for an era of Porsche racing dominance.

Reprinted from Weissach Region's Der Aspuff  
July August 1989 issue.

# Bob Dumont

*"We Service Porsches Only"*



**704 West Reno, OKC**  
**405/232-6497**



OUT-OF-TOWN?  
CALL TOLL-FREE  
1-800-522-8553

# PIPKIN CAMERAS

*"Photography spoken here since 1947"*



You can have what you need from Pipkins for as little as \$25.00 per month! Pipkins also features the finest quality One-Hour or Overnight processing of your color print film at big savings!!

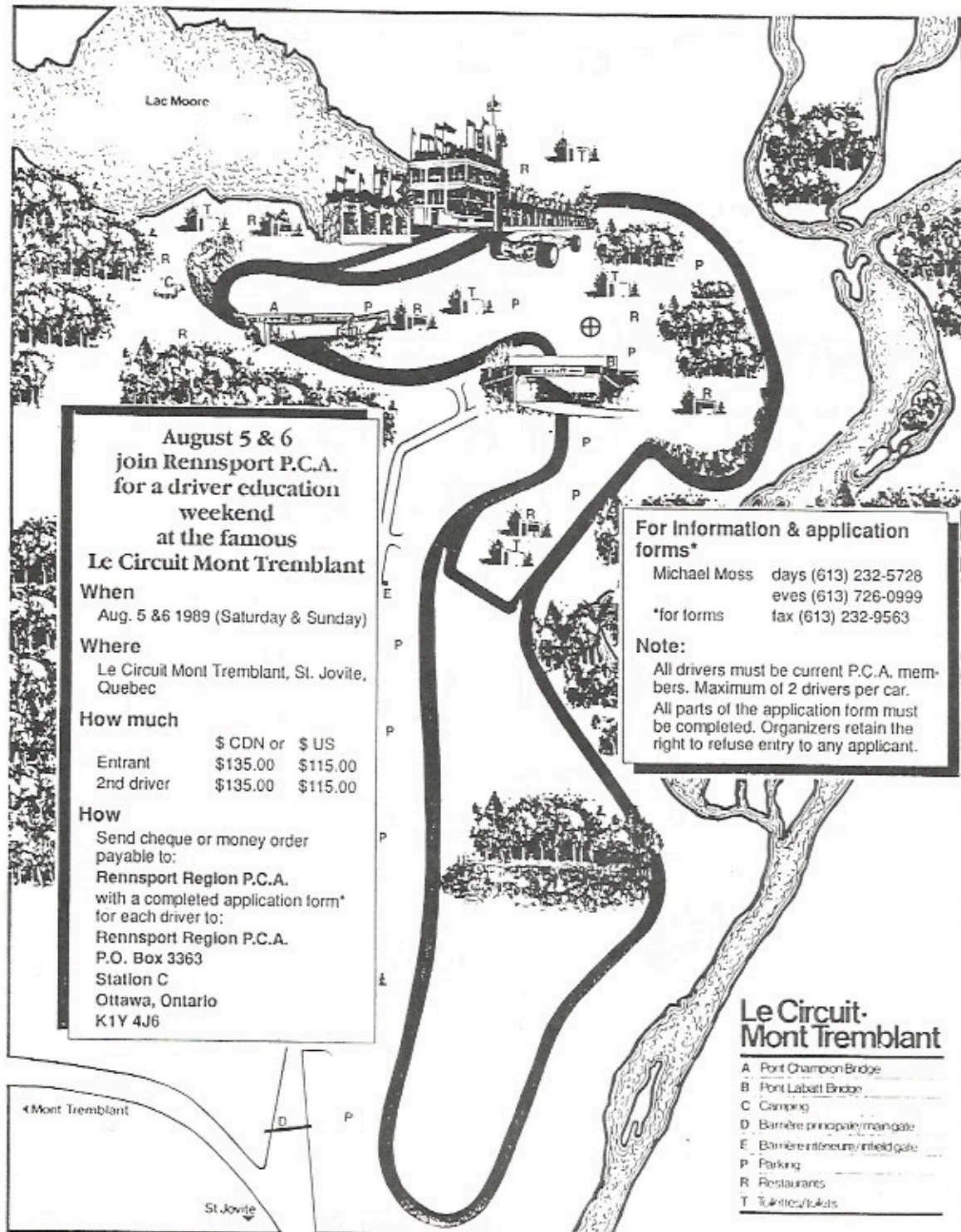


Classen  
2700 N. Classen  
524-1461

S. Penn Ave.  
5620 S. Penn.  
685-3343

Village Store  
9402-C N May  
755-1336

NW Expressway  
6444 NW Exprsw.  
721-6444



**August 5 & 6  
join Rennsport P.C.A.  
for a driver education  
weekend  
at the famous  
Le Circuit Mont Tremblant**

**When**

Aug. 5 & 6 1989 (Saturday & Sunday)

**Where**

Le Circuit Mont Tremblant, St. Jovite,  
Quebec

**How much**

	\$ CDN or	\$ US
Entrant	\$135.00	\$115.00
2nd driver	\$135.00	\$115.00

**How**

Send cheque or money order  
payable to:  
Rennsport Region P.C.A.  
with a completed application form\*  
for each driver to:  
Rennsport Region P.C.A.  
P.O. Box 3363  
Station C  
Ottawa, Ontario  
K1Y 4J6

**For information & application  
forms\***

Michael Moss days (613) 232-5728  
eves (613) 726-0999  
\*for forms fax (613) 232-9563

**Note:**

All drivers must be current P.C.A. members. Maximum of 2 drivers per car.  
All parts of the application form must be completed. Organizers retain the right to refuse entry to any applicant.

**Le Circuit-  
Mont Tremblant**

- A Pont Champion Bridge
- B Pont Labatt Bridge
- C Camping
- D Barrière principale/main gate
- E Barrière intérieure/interior gate
- P Parking
- R Restaurants
- T Toilettes/tickets



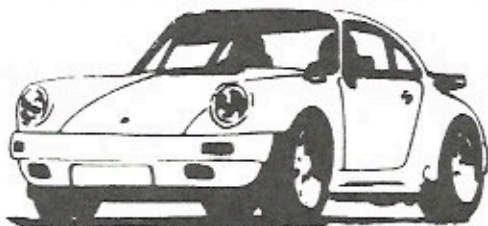
# Lawton and Saturday Morning

---

WILMES PORSCHE, 4330 NW Cache Road in Lawton will be the site of coffee and donuts the second Saturday of each month. Bring your mirror glaze, wax, P-21S, Armor All, Hide Food, or whatever you please, and we will sit around and have good fellowship, tell war stories, have coffee and donuts, and spend a little time being productive with our Saturday morning. The wash rack will be open and there is plenty of shade for cleaning that "baby" of yours (and don't forget to include the spouse). This will be an excellent time to invite all of the Porsche owners you know to come on out and get to know each other. Starting time will be at 10:00 AM- BE THERE!!!

Contact Don Scott at 405/355-7144 if you have any questions.

**Oklahoma  
Foreign  
Inc.**



Dealers of Porsche® Automobiles and  
used Porsche® Parts

South on I-35 P.O. Box 6676, Moore, OK 73153

**799-0645**

Open

Mon-Fri 8:30 to 5:30

Saturday 9:00 to 1:00

Parts & Sales  
Out of State call  
1-800/462-2446

**Buyers of Wrecked  
Porsches Nationwide**

# PORSCHE®

PORSCHE CARS NORTH AMERICA, INC.

## PORSCHE PRODUCT CHANGES FOR 1990 MODEL YEAR

### ALL MODELS

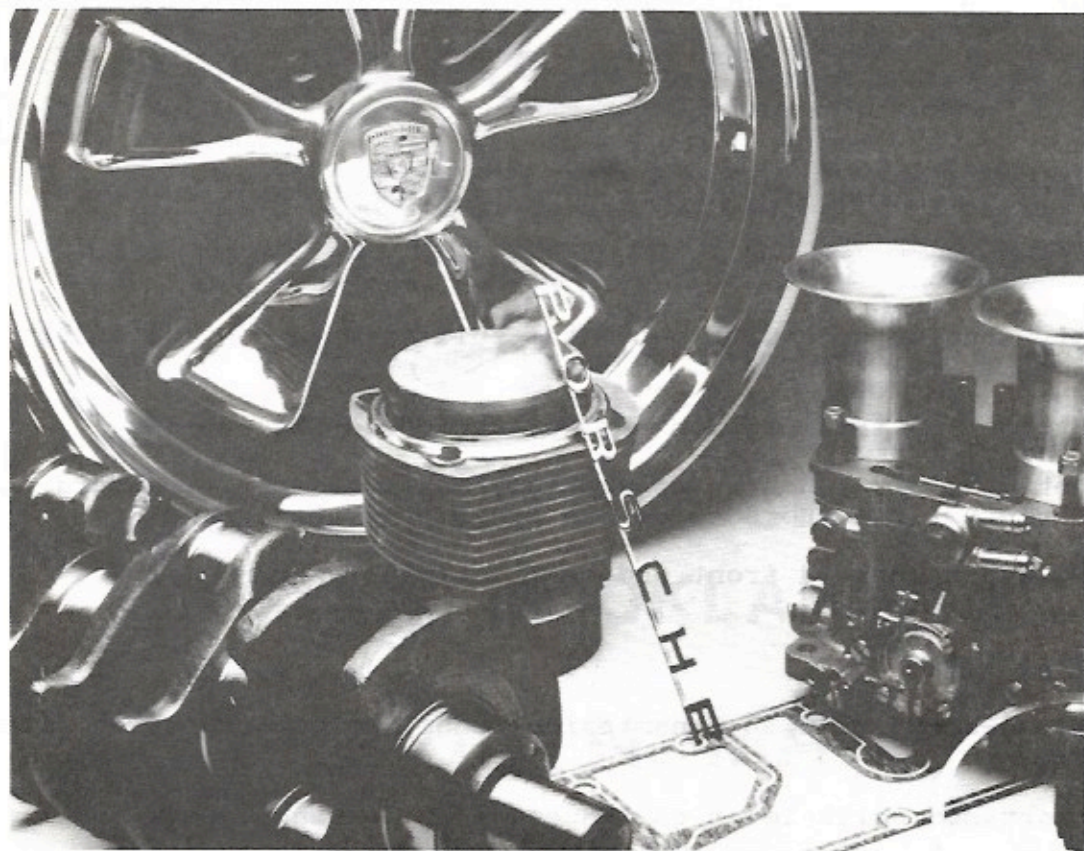
- Anti-Lock Braking System standard on all 1990 Porsches
- Driver and passenger side airbag restraint system standard on all 1990 Porsches

### 944 Series

- 3.0 Liter 208-hp 944 S2 Cabriolet added to 1990 944 Series
- 2.7 Liter 162-hp 944 Coupe no longer available
- 2.5 Liter 247-hp 944 Turbo no longer available

### 911 Series

- 3.2 liter 214-hp 911 Carrera Coupe, Targa and Cabriolet models replaced by 911 Carrera 2 with 3.6 liter 247-hp normally aspirated engine. 911 Carrera 2 available in Coupe, Targa, and Cabriolet body styles.
- 3.3 liter 282-hp 911 Turbo Coupe, Targa and Cabriolet models no longer available
- Targa and Cabriolet bodystyles for 911 Carrera 4
- 911 Carrera 2 features coil spring suspension similar to Carrera 4; with Mac Pherson struts at front and semi-trailing arms at rear. Toe-correcting rear suspension.
- 911 Carrera 2 drag coefficient improved by 20 percent over 1989 911 Carrera. Automatic retracting rear spoiler identical to 911 Carrera 4.
- On 911 Carrera 2, optional Porsche Double Function transmission (PDF) with Intelligent Shift Program, allowing automatic shift control or full manual (clutchless) shifting.



**NEW AND USED PARTS FOR ALL MODELS  
SAME DAY SHIPPING**



**Bosch  
Authorized  
Service**



**AUTOTECHNIK**  
PORSCHE SPECIALISTS

- MAINTENANCE AND REPAIR
- GASOLINE FUEL INJECTION
- ELECTRONIC SYSTEMS
- FOUR WHEEL ALIGNMENT
- PARTS & ACCESSORIES



**1804 RELIANCE PARKWAY • BEDFORD, TEXAS 76021 • (817) 267-4451**

# PORSCHE®

PORSCHE CARS NORTH AMERICA, INC.

- Partial engine encapsulation on both 911 Carrera 2 and 4
- Force sensitive power steering on both 911 Carrera 2 and 4
- Air conditioning with automatic full climate control on both 911 Carrera 2 and 4
- Backlit instrumentation similar to 1989 model 928 S4
- Optional six-function driver information system (standard on Carrera 2 with Porsche Double Function transmission)
- Fully integrated front and rear "soft polymer" bumpers

## 928 Series

- For 5-speed manual transmission model, new engine power rating of 326-hp
- Shortened shift lever on 5-speed manual transmission model
- Porsche Limited Slip Differential (PSD) which automatically transfers torque between rear wheels as needed according to wheel speed, wheel slip, and lateral acceleration.
- Tire pressure monitoring system
- Improved location for handbrake lever
- Revised shock absorber settings for improved handling
- On manual transmission model newly designed 7-1/2-inch wide front and 9-inch wide rear wheels with wider front and rear track

# **RED CARPET**

**TOUCHLESS  
CAR WASH**

**VISIT THE MOST  
ADVANCED TOUCHLESS  
SYSTEM IN OKLAHOMA!**

**6405 N. MAY**

**BRING THIS AD IN FOR  
ONE FREE CAR WASH.**

**Open 7 Days**

**Mon - Sat 8:30 - 6:00**

**Sun 9:30 - 6:00**

# THE INAUGURAL

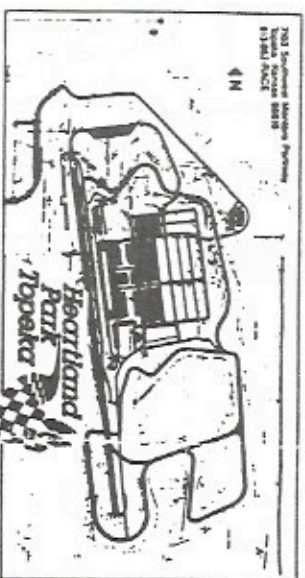


# HAPPENING

# AT HEARTLAND



# PORSCHE ON THE PRAIRIE



## SEPTEMBER 15,16,17

Drivers School Friday, Sept.15. Cost \$50.00  
Beginner and Advanced All Must Attend

Autocross Saturday and Sunday

Sept.16 and 17 Cost \$875.00

Registration and Tech Friday 8:00AM.

Helmets - Snell 80  
Fire Extinguisher - securely mounted  
New Brake Fluid

Lodging Park Inn International

Full Refund with 48hour notice

Limited Number REGISTER TODAY!

# PORSCHE ON THE PRAIRIE

## Registration

Send This Form & Your Check

(Payable To Great Plains Region) To

JoAnn Palmquist  
R.R. 1 Box 180  
Yutan, Nebraska 68073

Driver \_\_\_\_\_

Address \_\_\_\_\_ City \_\_\_\_\_ State \_\_\_\_\_

Car: Make \_\_\_\_\_ Model \_\_\_\_\_ Year \_\_\_\_\_ Modified \_\_\_\_\_

Driver School Class: Novice \_\_\_\_\_ Advanced \_\_\_\_\_

Previous Driver School Experience \_\_\_\_\_

Limited Number First Come First Served Total Cost \$125.00

"In consideration of being permitted to use the Heartland Park facility under the track rental lease of Great Plains, I agree to be solely financially responsible for any and all property damage to the Heartland Park facility caused, in whatsoever manner, by myself, or a registered co-driver, either in the vehicle which I have registered, or in another vehicle within the Heartland Park facility, which is under my control. I further agree to pay Great Plains within seven (7) working days of invoice by it for all reasonable property damage which it has been billed, or which it has been paid to the operators of Heartland Park for property damage to the Heartland Park facility in which I, or my vehicle was involved."

Signature \_\_\_\_\_

# The Calendar for 1989

---

## SEPTEMBER

2nd (Saturday) Breakfast at Village Inn 9:00 AM  
17th (Sunday) Betty Crocker Rally - Dinner  
1st - 3rd Whiskey Bay Region Cajun Classique

## OCTOBER

7th (Saturday) Breakfast at Village Inn 9:00 AM  
14th-15th Fall Tour  
13th - 15th Maverick Region Round-Up

## NOVEMBER

4th (Saturday) Breakfast at Village Inn 9:00 AM  
TBA German Dinner

## DECEMBER

2nd (Saturday) Breakfast at Village Inn 9:00 AM  
TBA Christmas Party

The Betty Crocker Rally and Dinner is the next event. War Bonnet Region has not had a event like this in a long time. The "rally" part is very low key and fun. The reason we call it a Betty Crocker rally is we use flower as a guide to your destination. All entrants are given a sheet with instructions on the route written in a vague way. Kind of like the instructions you

would get verbally if you could not read. something like "go one mile north, turn just past the big tree, go past the red barn then turn left." The flower comes in as an assurance you are on course. The rally master will drive the course just before the contestants are set loose. If you have gone more than one mile and you have not seen a handful of flower (it is bio-degradable) on the side of the road, you are lost. In the unlikely event you are totally lost you can open your "Open in emergency" envelope. Inside is the address and name of the destination.

The person who comes in with the most accurate mileage and has not opened the "Open in emergency" envelope wins a nice prize. That prize will be determined by the number of drivers. The more people the better the prize.

You will get a flyer in the mail soon to remind you. BE THERE!

War Bonnet Region PCA  
C/O Pro Photo Lab  
2700 N. Portland  
Oklahoma City, OK 73107

**Bulk Rate**  
U.S. Postage Paid  
Oklahoma City, OK  
Permit No. 1590

Forwarding and Address  
Corrections Requested



## Official Publication



**Ark-La-Tex;** Shreveport; Texarkana; Ruston  
Jay Pineau 318/251-2987  
David Neal 214/930-2621  
42 members

**Coastal Bend;** Corpus Christi Brownsville Tx.  
Peter Kendig 512/853-5350  
Dr. Anil Nath 512/887-8210  
25 members

**Hill Country;** Austin; San Angelo  
Jim Bob Bryant 512/835-1647  
Rick Toms 512/280-7425  
111 Members

**Lone Star;** Houston; Beaumont; Galveston  
Paul Vollmar 713/933-6906  
Rick Dryer 713/261-0244  
396 members

**Longhorn;** San Antonio  
Bill Lusk 512/497-4657  
Joyce & Bob Towsley 512/497-4306  
136 members

**Maverick;** Dallas; Ft. Worth; Tyler  
Bob Knight 214/349-1108  
Shane Beard 214-691-1626  
485 members

**Ozark;** Little Rock; Hot Springs  
Bill Canino 501/227-7777  
Jay Tucker 501/227-9077  
38 members

**Swampland;** New Orleans  
Michael Rappold 504/888-4236  
Phil Daigrepoint 504/464-1980  
144 Members

**War Bonnet;** Oklahoma City; Lawton; Enid  
Al Lang 405/755-0208  
Rob Lewis 405/722-2050  
118 Members

**Weissach;** Tulsa; Broken Arrow; Stillwater  
Bonnie Monson 918/627-3027  
Tom Charlesworth 918/455-8276  
150 Members

**Whiskey Bay;** Lafayette Baton Rouge  
James Broussard 504/344-8019  
Frank Camalo 318/856-9769  
97 Members

**Your Zone 5 Connections**