



# MID-AMERICA CONVERSION SERVICES ATKINS, WESTINGHOUSE & FLUOR

## Annual Plan for Community Commitment Fiscal Year 19

Mid-America Conversion Services, LLC

1020 Monarch Street

Lexington, KY 40513



## Introduction and Commitment Summary

Mid-America Conversion Services, LLC (MCS) is responsible for carrying out the critical mission of the DUF6 conversion activities in both Paducah, Kentucky, Lexington, Kentucky, and Portsmouth, Ohio. MCS recognizes the importance and needs of the local regions and plans to take meaningful actions to implement its community commitment as described in DEAR 970.5226-3, which is included in Section H.69 of the contract. MCS's mission is to contribute to the surrounding communities' economy, education, and quality of life. Our Community Commitment Plan enables us to be an active corporate leader within the community and contribute to the economic stabilization and growth to the areas that surround us. MCS identified a Steering Committee (Attachment A) in 2018 consisting of plant managers, a communication specialist, union employees, and local representatives from our three geographical areas. The Steering Committee assessed the needs of our local communities and established achievable goals relative to MCS's commitment to education, economic involvement, and community involvement. In partnership with the U.S. Department of Energy (DOE), MCS will continue to focus on three sectors: Educational Involvement, Economic Involvement, and Community Involvement. Below you will find our Community Commitment Plan for Fiscal Year 2019 (FY19).



---

## Commitment Areas of Focus

Mid America Conversion Services will contribute to the community through the following three commitment categories:

- 1 Educational Involvement
- 2 Economic Involvement
- 3 Community Involvement

# Educational Involvement

MCS will target our Educational Outreach Program for student support, curriculum enhancement, educational technology, public understanding, and service of employees. In collaboration with local schools and the community, MCS identified critical areas of need and will target the following:

## Key Initiatives:

1 Partnerships

2 Workforce Development

## Partnerships

1 Provide educational tools and technologies, along with school supplies to ensure student success throughout the school year.

2 Mentor students on career awareness (specifically encouraging science, engineering, and manufacturing in relation to the DUF6 project), provide scholarships and internships, and higher education opportunities.

3 Host field trips and conduct classroom demonstrations so students are made aware of the DUF6 project.

5 Participate and volunteer in local STEM (Science, Technology, Engineering, Math) Programs with area schools.

## ***Portsmouth***

### DOE Science Alliance

Portsmouth DUF6 plant will be both a monetary donor and volunteer in the Annual DOE Science Alliance. Approximately 2,200 students and educators from 25 Southern Ohio high schools participate in an interactive Science Fair that introduces STEM. Topics include, but are not limited to, nuclear fuel cycle, environmental stewardship, business development, facility history, and future farming techniques. Opportunities like the Science Alliance encourage students to think about future careers, college school choices, and allows DOE and MCS an opportunity to introduce students to the DUF6 Project.



### DOE Science Bowl

Portsmouth employees will partner with DOE both as a monetary donor and volunteer to students who participate in the DOE Science Bowl. The Bowl is an academic competition which encourages students to excel in mathematics and sciences in hopes they will pursue a career in one of those fields. Since 1991, more than 225,000 students have participated and several have awards, which in return has propelled them toward a rewarding career.

### Educational Tools and Technologies

Portsmouth DUF6 plant will select various schools (particularly science, technology, engineering, & math focused) who are in need and purchase educational tools and technologies for their classrooms to ensure students are provided with items needed for a successful school year.



## ***Lexington***

### Educational Tools and Technologies

Lexington office will select various schools (particularly science, technology, engineering, & math focused) who are in need and will purchase educational tools and technologies for their classrooms, such as computers, lab equipment, and school supplies, to ensure students are provided with items needed for a successful school year.

### Partnership with Community and Technical Colleges

Collaborate with administrators and teachers to identify critical areas of need. Participate in career awareness programs, local and regional events held at the college, and career fairs.

### Local Public Schools

Lexington employees will volunteer at a local area school of our choice, mentoring and tutoring students to promote interest in science, engineering, environmental science, and introduce students to the DUF6 Project.

## ***Paducah***

### Educational Tools and Technologies

Portsmouth DUF6 plant will select various schools (particularly STEM-science, technology, engineering, & math focused) who are in need and purchase educational tools and technologies for their classrooms to ensure students are provided with items needed for a successful school year.

### DOE Science Bowl

Paducah employees will partner with DOE both as a monetary donor and volunteer to students who participate in the DOE Science Bowl. The Bowl is an academic competition which encourages students to excel in mathematics and sciences in hopes they will pursue a career in one of those fields. Since 1991, more than 225,000 students have participated and several have awards, which in return has propelled them toward a rewarding career.

## Workforce Development

**1** Provide an educational assistance program to our employees pursuing a Bachelor of Arts or Science Degree related to the mission of the DUF6 Conversion Project.

**2** Offer outside training programs or executive training programs for nonexecutive employees interested in professional development or gaining a graduate degree in related disciplines at the DUF6 Project.



MCS will provide training and educational opportunities to their managers and leaders within the organization to help with overall improvement and skills development, such as conflict resolution. MCS will also seek out employees or identify people within our organization who have potential to fill management roles and provide training necessary via conference attendance or classes to benefit the future of the project.

MCS's educational assistance program provides opportunities for employees to obtain additional education or training in order to maintain or enhance their competence in their job and prepare for future opportunities and critical skill positions within the company.

## Economic Development

MCS will establish a Purchasing Program with a solicitation preference toward regional businesses while complying with our DOE-approved purchasing system. We will conduct business alliances with regional vendors, coordinate with Chambers of Commerce, and small business development centers targeting the following areas:

### ***Local and Small Business Engagement***

**1** Identify regional small businesses and vendors for training and mentoring programs to enable companies to compete fairly and effectively for subcontracts and purchase orders.

**2** Encourage the formation of regional trade associations that will enable regional businesses to meet future project needs.

**3** Coordinate with Chamber of Commerce and Small Business Development Centers on small business opportunities.

**4** Conduct Safety Fairs in all three locations, which gives local businesses opportunities to showcase their goods and services.

**5** Promote project spending with local businesses, as allowable under the Federal Acquisition Regulations (FAR).

**6** In partnership with Southern Ohio Diversification Initiative (SODI), MCS will donate excess property to SODI allowing the local community to benefit from excess property located at the Portsmouth site.

# Community Involvement

MCS will target our local communities in all three locations by participating in local community activities, and sponsoring and volunteering through various local charities we select. By volunteering our time, MCS employees benefit from leadership and skill development, team building, loyalty and retention, employee recruitment, improved public reputation, and a stronger community. Volunteering defines our corporate responsibility, redefines our company's image, and develops employee character traits. MCS will allow their employees to volunteer their time within the community to promote personal growth and self-esteem, strengthen our community, encourage civic responsibility, and make a difference in local people's lives. MCS has identified two areas which are listed below:

## ***Charitable Giving and Volunteering***

- 1 Collaborate with our parent companies to make monetary donations to local charities of our choice.
- 2 Identify and evaluate opportunities to supplement MCS employee contributions toward community organizations.
- 3 Periodically review, modify, and improve our monetary donations to ensure its continued alignment with the future needs of our project and our region.
- 4 MCS will provide an opportunity for employees to take Paid Time Off or use unallowable funds to volunteer within our community for their local charity of choice or company sponsored charities.

## ***Portsmouth***

MCS Portsmouth, OH will be involved with organizations such as the following (not exhaustive):

### Feds Feed Families

In partnership with DOE, Portsmouth employees will come together to support DOE's Feds Feed Families campaign in donating canned goods and include a monetary donation to those in need, benefiting their region.

### Christmas Tree Giving Fund

In the month of December, Portsmouth employees will foster a partnership with Fluor-BWXT Portsmouth and select a homeless shelter to provide Christmas presents for local families in need.

### Veterans Day Drive

MCS employees will meet at the flag to honor Veterans who have served our country and will provide a meal to Veterans of Foreign Wars (VFW) Post 3638.



### Local County Fairs

Partnership with Scioto County, Ross County, and Pike County Fairs in making monetary donations that will be given to local farming students who have raised market livestock, and nurtured and cared for horses year round. These activities teach local kids responsibility and teamwork.

### Breast Cancer Awareness Month

A monetary donation will be made in October for Breast Cancer Awareness month benefiting local women within our community who have been diagnosed with the life-threatening disease.

### Blood Drive-American Red Cross

MCS will host local Blood Drives within the Fiscal Year which will benefit the communities and people in need.

### Stephen A. Hunter Foundation

Portsmouth employees will make a monetary donation to the Stephen A. Hunter Foundation. The Stephen A. Hunter Foundation is a local charity that provides goods, services, and funds to students of Portsmouth City Schools with financial needs. Our donation goes to providing students with clothes, ACT/SAT fees, field trips, medical exams, and tutoring.

## **Lexington**

MCS Lexington, KY will be involved with organizations such as the following (not exhaustive):

### Cystic Fibrosis

Monetary donation to local Cystic Fibrosis (CF) Foundation Chapter. MCS will also participate in their local events including, but not limited to, Walk to Cure Cystic Fibrosis-Great Strides Walk and sponsor a table at Splash, their local benefits dinner. Money donated to the CF Foundation goes directly to the people who are affected by the disease in hopes they get to live a normal life while facing challenges of adulthood, careers and relationships, in addition to managing the significant burdens of living with CF.



### Feds Feed Families

In partnership with DOE, Lexington employees will come together to support DOE's Feds Feed Families campaign in donating can goods, making a monetary donation and stocking shelves at the local pantry for those in need, benefitting their region.

Homeless Shelter

Twice a year, Lexington employees will provide a meal to two local homeless shelters.

Christmas Giving Fund

Lexington employees will select a charity for Christmas and will provide gifts for those in need during the holiday season.



Breast Cancer Awareness Month

A monetary donation will be made in October for breast cancer awareness month benefiting local women within our community who have been diagnosed with the disease.

Blood Drive-American Red Cross

MCS will host local Blood Drives within the fiscal year which will benefit the communities and people in need.

Earth Day

Lexington employees will participate in a park cleanup benefiting the environment and local community.

***Paducah***

Blood Drive-American Red Cross

MCS Paducah employees will host local Blood Drives within the fiscal year, which benefits the surrounding communities and people those in need.



United Way

In partnership with DOE, MCS will make a monetary donation to the United Way, which improves conditions in Education, Income, and Health within the community.

Lions Club Telethon of the Stars-Easter Seals

MCS commits to making a donation benefitting Telethon of the Stars, which supports Easter Seals and Cassidy's Cause which in return, supports our region's children with disabilities.

USW Golf Scramble

In support of our USW workforce, MCS will make a monetary donation and will participate in the annual golf scramble.



### Marcella's Kitchen

MCS will make a monetary donation to Marcella's Kitchen. Marcella's Kitchen is a community kitchen that feeds those in the Paducah area who are less fortunate. The kitchen serves as a place for fellowship and friendship, while extending service to those in need.



### Feds Feed Families

In partnership with DOE, Paducah employees will come together to support DOE's Feds Feed Families campaign in donating can goods, making a monetary donation and stocking shelves at the local pantry

for those in need, benefitting their region.

### Stuff the Bus

Paducah employees will partner with United Way in support of the Stuff the Bus Program, which is an annual school supply drive in which items are dispersed to participating schools for students and families in need.

### Multiple Sclerosis (MS Walk)

Employees at the Paducah Plant will come together and walk for Multiple Sclerosis (MS). MCS will make a monetary donation as well, and together, become a powerful force in ending MS.

### Toys for Tots

MCS employees will team up with Toys for Tots through the gift of new toys and bring the joy of Christmas to help those families who are less fortunate during the holiday season.

### American Cancer Society

MCS will make a monetary donation to The American Cancer Society. The American Cancer Society is the nationwide, community-based, voluntary health organization dedicated to eliminating cancer as a major health problem by preventing cancer, saving lives, and diminishing suffering from cancer, through research, education, advocacy, and service.

### McCracken County Mustangs Running Boosters

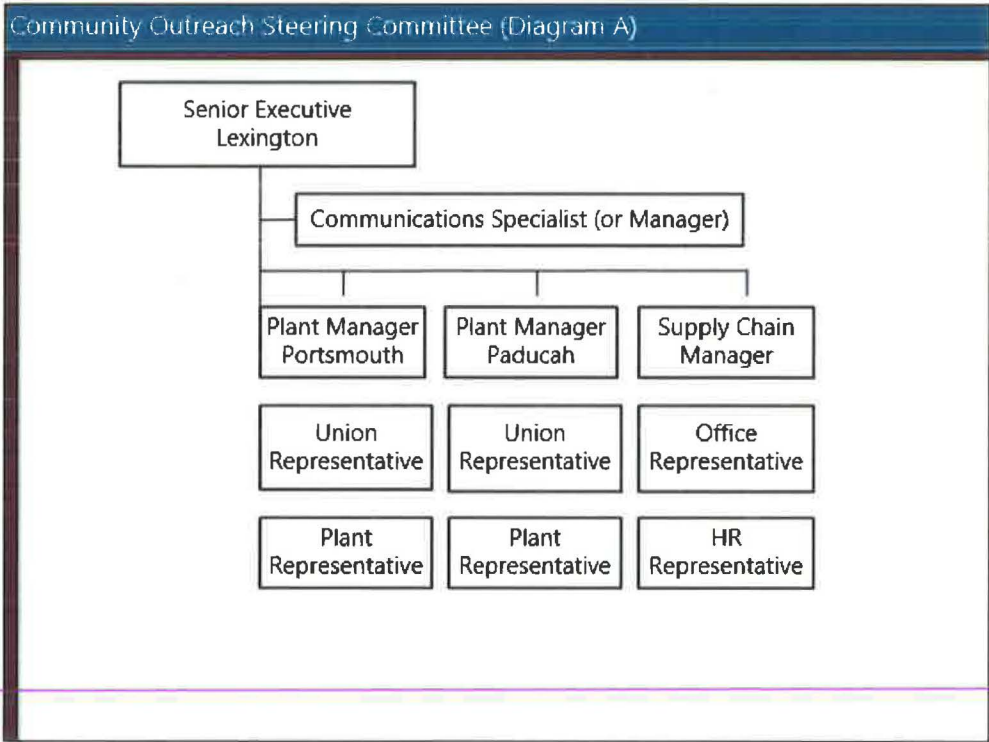
MCS Paducah employees will make a monetary donation and participate in their Yule Light up the Night 5K and Kids' Fun Run. The goal of the Mustangs Running Boosters Club is to instill a love of running and a healthy lifestyle for young athletes in the area.

### Kare for Kids

MCS will volunteer at their local Christmas event and make a monetary donation to Kare for Kids. Kare for Kids is a non-profit organization that provides Christmas gifts to foster children. MCS employees are paired with a child and spend the day shopping at local stores buying items off their wish lists for themselves and for their family members.

In conclusion, MCS commits to a beneficial partnership with DOE, aimed at enhancing the vitality and sustainability of our regional communities through economic diversification, educational assistance, and social support. Because MCS operates with two production facilities/processing plants, and supported by the Lexington Business Office, our goal is think globally but act locally. This plan outlines our social responsibility to the communities that surround us, provides visibility for both DOE and MCS, all while promoting a positive word of mouth and goodwill. Not only does the community benefit from having their needs met and fulfilled, both MCS and DOE benefit from nurturing personal goals, causes we care about, and boosting morale.

### Community Outreach Steering Committee (Attachment A)



# Community Commitment Plan Semi-Annual Report FY18

## *Economic Involvement*

Chamber of Commerce Paducah	5396
Chamber of Commerce Portsmouth	1000
Paducah Economic Development	500

## *Educational Involvement*

DOE Science Alliance	1640
----------------------	------

## *Community Involvement*

United Way Drive	839
4-H	1000
Breast Cancer Awareness	470
Lions Club Telethon of the Stars	6000
BBQ on the River	500
Girls and Boys Club	500
Cystic Fibrosis Foundation	4500
National Multiple Sclerosis Society (NMSS)	100
Marcella's Kitchen	100
Kare for Kids	100
USW Golf Scramble Charity Event	500
Steven A. Hunter Foundation	1000
Stable Stars	200
Earth Day 2018	395
Cairo High School Baseball Team	500
American Cancer Society	50
Shriners Hospitals for Children	100
JDRF One Walk	300
Pike County Christian Academy	5000
Mason Lodge	100
McCracken County Career Fair	21
Eastern Youth Soccer	400
McCracken County Community Career Endowment	500
Paducah Cooperative Ministry	100
Pike County Junior Fair Animal Sales	400

**Total Monetary Involvement** **\$23,675.00**

## *Volunteer Hours/Misc.*

Feds Feed Families

5,457 pounds of food doanted

American Red Cross

Blood Drive was held in August which MCS employees donated a total of 24 pints of blood. Since 2013, DUF6 employees have donated a total of 415 pints of blood, which is 1,245 lives. Participated in this years Annual Splash Event for Cystic Fibrosis

Cystic Fibrosis Foundation

selling various auction items. MCS was chosen as their recipient of their Hope Award and will receive the award in December of 2018 at their annual banquet.

Safety Fairs-3 Sites

Safety Fairs were conducted at all sites where local vendors had the opportunity to showcase their small businesses, and in return, gave MCS the opportunity to fulfill their small business/sub category goals