



Community Commitment Plan 2020

DUF₆

Depleted Uranium
Hexafluoride

Introduction and Commitment Summary

Mid-America Conversion Services, LLC (MCS) is responsible for carrying out the critical mission of the Depleted Uranium Hexafluoride (DUF6) conversion activities in Paducah, Kentucky, Lexington, Kentucky, and Portsmouth, Ohio. MCS recognizes the importance and needs of the local regions and plans to take meaningful actions to implement its community commitment as described in DEAR 970.5226-3, which is included in Section H.69 of the contract. MCS's mission is to contribute to the surrounding communities' economy, education, and quality of life. Our Community Commitment Plan enables us to be an active corporate leader within the community and contribute to the economic stabilization and growth to the areas that surround us. This plan identifies a Steering Committee consisting of plant managers, a communication specialist, union employees, and local representatives from our three geographical areas. The Steering Committee assessed the needs of our local communities and established achievable goals relative to MCS's commitment to education, economic involvement, and community involvement. In partnership with the U.S. Department of Energy (DOE), MCS will continue to focus on three sectors: Educational Involvement, Economic Involvement, and Community Involvement. Below you will find our Community Commitment Plan for 2020.



Commitment Areas of Focus

MCS will contribute to the community through the following three commitment categories:

- 1 Educational Involvement
- 2 Economic Involvement
- 3 Community Involvement

Educational Involvement

MCS will target our Educational Outreach Program for student support, curriculum enhancement, educational technology, public understanding, and service of employees. In collaboration with local schools and the community, MCS identified critical areas of need and will target the following:

Key Initiatives:

- 1 Partnerships
- 2 Workforce Development

Partnerships

- 1 Provide educational tools and technologies, along with school supplies to ensure student success throughout the school year.
- 2 Mentor students on career awareness (specifically encouraging science, engineering, and manufacturing in relation to the DUF6 project), provide scholarships and higher education opportunities.
- 3 Conduct demonstrations so students are made aware of the DUF6 project.
- 4 Participate and volunteer in local STEM (Science, Technology, Engineering, Math) Programs with area schools.

Workforce Development

- 1 Provide an educational assistance program to our employees pursuing a Bachelor of Arts or Science Degree related to the mission of the DUF6 Conversion Project.
- 2 Offer outside training programs or executive training programs for nonexecutive employees interested in professional development or gaining a graduate degree in related disciplines at the DUF6 Project.

MCS will provide training and educational opportunities to their managers and leaders within the organization to help with overall improvement and skills development, such as conflict resolution. MCS will also seek out employees or identify people within our organization who have potential to fill management roles.

MCS's educational assistance program provides opportunities for employees to obtain additional education or training in order to maintain or enhance their competence in their job and prepare for future opportunities and critical skill positions within the company.

Economic Involvement

MCS will establish a Purchasing Program with a solicitation preference toward regional businesses while complying with our DOE-approved purchasing system. We will conduct business alliances with regional vendors, coordinate with Chambers of Commerce, and small business development centers targeting the following areas:

Local and Small Business Engagement

- 1** Identify regional small businesses and vendors for training and mentoring programs to enable companies to compete fairly and effectively for subcontracts and purchase orders.
- 2** Encourage the formation of regional trade associations that will enable regional businesses to meet future project needs.
- 3** Coordinate with Chamber of Commerce and Small Business Development Centers on small business opportunities.
- 4** Conduct Safety Fairs in all three locations, which gives local businesses opportunities to showcase their goods and services.
- 5** Promote project spending with local businesses, as allowable under the Federal Acquisition Regulations (FAR).
- 6** In partnership with Southern Ohio Diversification Initiative (SODI), MCS will donate excess property to SODI allowing the local community to benefit from excess property located at the Portsmouth site.

Community Involvement

MCS will target our local communities in all three locations by participating in local community activities, and sponsoring and volunteering through various charities. By volunteering our time, MCS employees benefit from leadership and skill development, team building, loyalty and retention, employee recruitment, improved public reputation, and a stronger community. Volunteering defines our corporate responsibility, redefines our company's image, and develops employee character traits. MCS will allow their employees to volunteer their time within the community to promote personal growth and self-esteem, strengthen our community, encourage civic responsibility, and make a difference in local people's lives. MCS has identified two areas which are listed below:

Charitable Giving and Volunteering

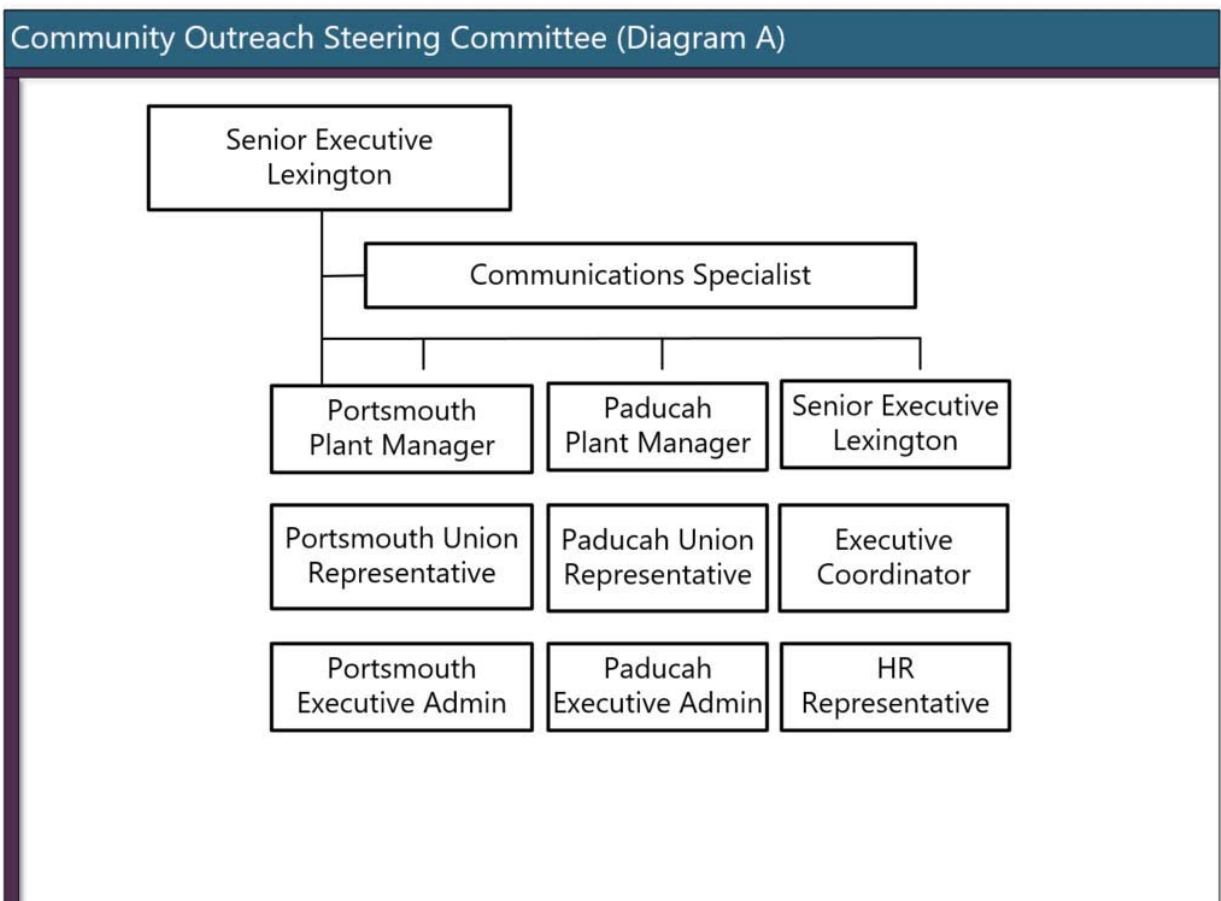
- 1** Collaborate with our parent companies to make monetary donations to local charities of our choice.
- 2** Identify and evaluate opportunities to supplement MCS employee contributions toward community organizations.

3 Periodically review, modify, and improve our monetary donations to ensure its continued alignment with the future needs of our project and our region.

4 MCS will provide an opportunity for employees to take Paid Time Off or use unallowable funds to volunteer within our community for their local charity of choice or company sponsored charities.

In conclusion, MCS commits to a beneficial partnership with DOE, aimed at enhancing the vitality and sustainability of our regional communities through economic diversification, educational assistance, and social support. Because MCS operates with two production facilities/processing plants, and supported by the Lexington Business Office, our goal is think globally but act locally. This plan outlines our social responsibility to the communities that surround us, provides visibility for both DOE and MCS, all while promoting a positive word of mouth and goodwill. Not only does the community benefit from having their needs met and fulfilled, both MCS and DOE benefit from nurturing personal goals, causes we care about, and boosting morale.

Community Outreach Steering Committee



Community Commitment Plan Semi-Annual Report FY19

Economic Involvement

Paducah Area Chamber of Commerce
Paducah Economic Development
Labor Management Conference Sponsor

Educational Involvement

DOE Science Alliance
DOE Science Bowl
WKY Launch Experience - 8th Grade Career Fair
McCracken County Community Career Endowment
School Supply Fundraiser - United Way Stuff the Bus

Community Involvement

United Way
Project United
4-H
Breast Cancer Awareness
Lions Club Telethon of the Stars
BBQ on the River
Girls and Boys Club
Cystic Fibrosis Foundation
National Multiple Sclerosis Society (NMSS)
Marcella's Kitchen
Kare for Kids
Merryman House - USW Golf Tournament
Steven A. Hunter Foundation
Stable Stars
Earth Day 2019
USW Western KY Labor Day Committee
American Cancer Society
Shriners Hospitals for Children
JDRF One Walk
Pike County Christian Academy
Toys for Tots
Mason Lodge
McCracken County Career Fair
Eastern Youth Soccer
Habitat for Humanity
Paducah Cooperative Ministry
Pike County Junior Fair Animal Sales
Make-A-Wish Foundation
Christmas Gifts for Children
Pike County Farm Bureau

Pike County Dogwood Festival
 Village of Piketon Wing-Ding July 4th Celebration
 St. Elizabeth Chapter No. 6 Order of the Eastern Star
 Hard Knocks Training Center -Boxing Against Bullying
 Fundraiser Event
 Celebration for Employees to commemorate plant
 exceeding all DUF6 production goals.
 Ross County Board of Developmental Disabilities - The
 Pioneer Center
 Scioto County Bed DD School - The Vern Riffe Center
 Scioto County Junior Animal Sales
 Ross County Junior Animal Sales
 Stefanie Spielman Comprehensive Breast Center

Volunteer Hours/Misc.

Feds Feed Families	8208 pounds of food donated-3 sites 1683.2-Paducah 3525-Lexington 3580-Portsmouth
American Red Cross	American Red Cross awarded MCS a plaque honoring the outstanding support of employees. Since 2010, employees have given more than 700 pints of blood.
Cystic Fibrosis Foundation	Participated and volunteered for the CF Walk in Lexington totaling 32 hours. Percolated in CF Splash event where MCS was recognized as one of their largest local donators.
Safety Fairs-3 Sites	Three Safety Fairs were conducted at all three locations where local vendors and safety demonstrations were presented to employees and other site contractors.
Make-A Wish Foundation	MCS volunteered at two separate events where ten local kids were granted wishes in the Lexington area.
United Way Volunteer Day	Seven MCS employees participated in Project United Way of Paducah-McCracken County's annual community-wide day of service. Volunteers complete projects at non-profit agencies across Paducah and McCracken County. Projects include painting, landscaping, office support, and much more.

DOE Science Alliance	Eleven MCS employees volunteered their time at DOE's interactive science fair that introduces STEM (science, technology, engineering and math) subjects to high school students who are making decisions about their futures. The record number of students who attended saw 13 demonstrations, ranging from plant history to the nuclear fuel cycle, environmental stewardship, business development, and future farming techniques, among others.
DOE Science Bowl	Twelve MCS employees volunteered their time that tests students' knowledge in all areas of science and mathematics. Middle and high school student teams from diverse backgrounds face-off in a fast-paced question-and-answer format, being tested on a range of science disciplines including biology, chemistry, Earth science, physics, energy, and math.
Kare for Kids	Three MCS employees and their spouses volunteered their time to sponsor a foster child during the kare for Kids Christmas event. Kare for kids is a grass roots non-profit organization that was started in 1997. The founders of this organization recognized that while most children would celebrate the Christmas season surrounded by loved ones, Christmas time for area foster children lacked the joys and celebrations we often take for granted. The foster children who attend the Kare for Kids party are specifically chosen by the Cabinet for Families and Children. Each child is paired with a volunteer for the day in order to ensure each child receives the one-on-one attention and recognition
Marcella's Kitchen	One MCS employee volunteers time throughout the year at this community kitchen located in the Marshall County area.