



**DEPARTMENT
OF
JUSTICE**
Federated States of Micronesia

**OFFICE OF THE SECRETARY / ATTORNEY
GENERAL**



Cyber
Security &
Intelligence
Bureau

Division of
Investigation
and Protective
Services

Anti- Human
Trafficking
Services

Division of
Border
Control and
Maritime
Surveillance

Division of
Litigation

Division of
Law

Division of
Immigration
And Passport
Services

Division of
Labor

Office of
Registrar of
Corporations



FSM
DEPARTMENT OF
JUSTICE
DIVISION:
LAW

SECRETARY OF JUSTICE

CHIEF OF LAW / Assistant Attorney General

Legal Advice/Opinion to President/Cabinet Secretaries





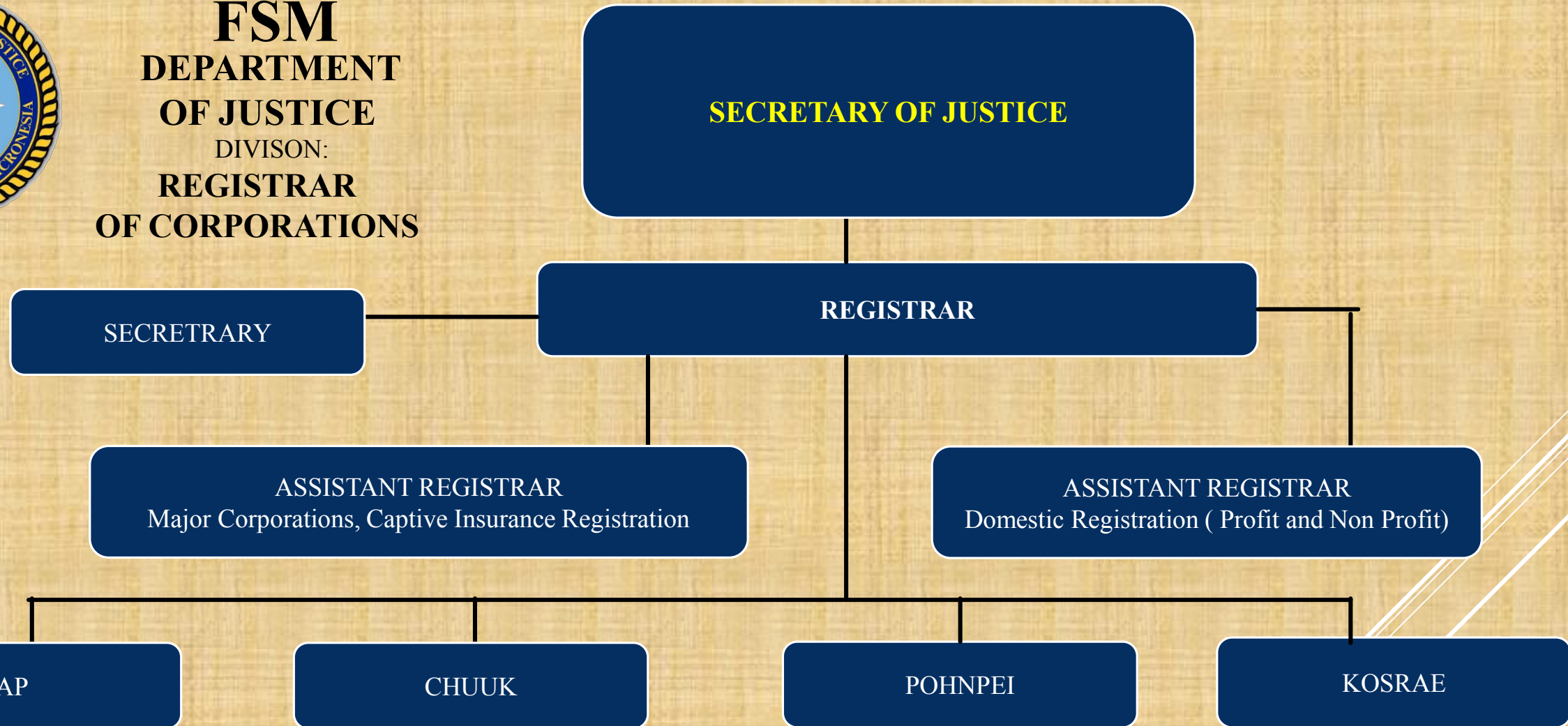
**FSM
DEPARTMENT
OF JUSTICE**

DIVISION:
LITIGATION





FSM
DEPARTMENT
OF JUSTICE
DIVISION:
REGISTRAR
OF CORPORATIONS





FSM DEPARTMENT OF JUSTICE

Division:
**INVESTIGATION AND
PROTECTIVE SERVICES**



**SECRETARY OF JUSTICE/ATTORNEY
GENERAL**

CHIEF OF POLICE

**ASSISTANT
SECRETARY**

Deputy Chief/ Major

SWAT (Commander)

**PRESIDENTIAL
& VIP
PROTECTION
SERVICES**

**PROTECTION AND SECURITY
SERVICES OF FSM
NATIONAL & FOREIGN
GOVERNMENT OFFICES,
ASSETS & CRITICAL
INFRASTRUCTURES**

INVESTIGATIONS (Captain)

**PRESIDENT
VICE
PRESIDENT
) 2 5 (, 1 3 1 V**

**NATIONAL
CRIMES
(Sgt.)**

**ANTI HUMAN
TRAFFICKING
(Sgt.)**

**F.I.U. &
FINANCIAL
CRIME &
TERRORISM
(Sgt.)**

**FIREARM
& DRUGS
& K9
(Sgt.)**

**FISHERIES &
Environmental
Crime
(Sgt.)**

**YAP
(Captain)**

**CHUUK
(Captain)**

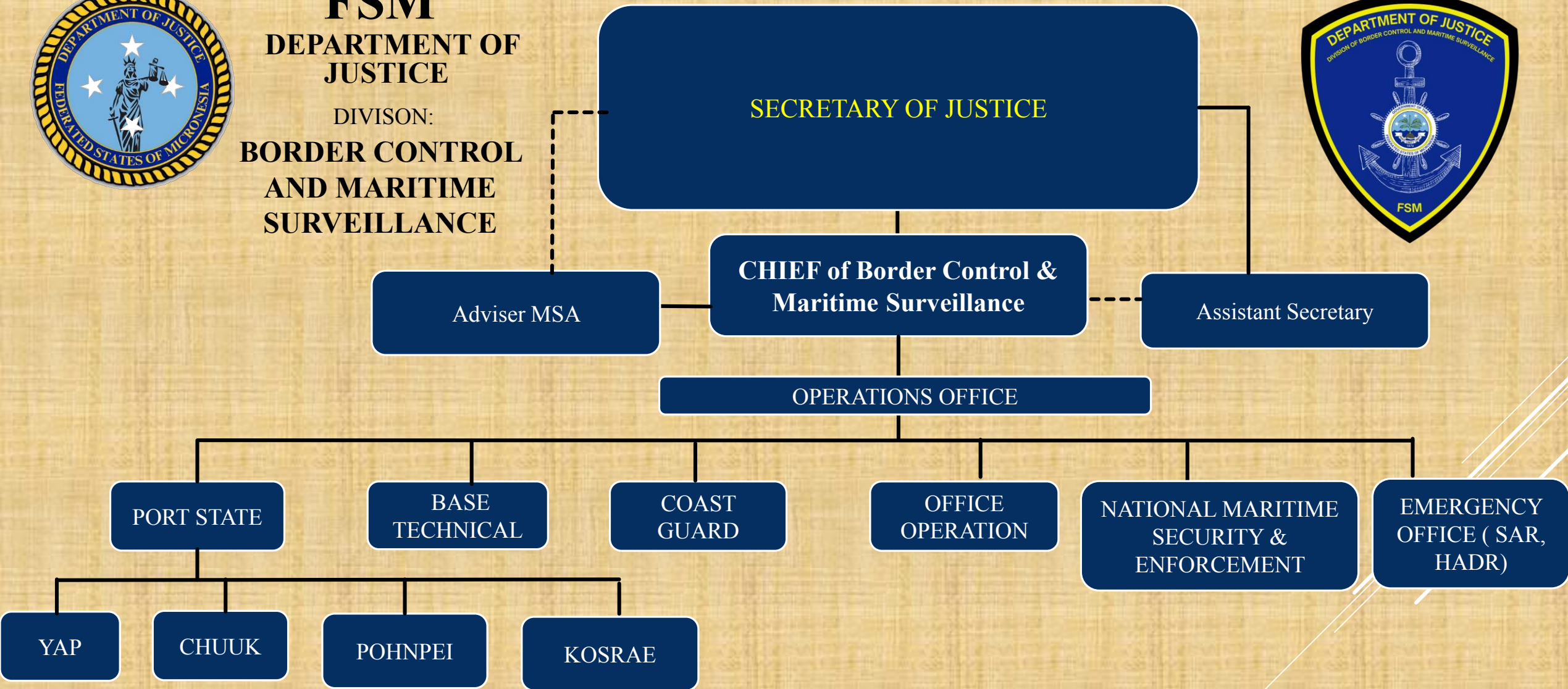
**POHNPEI &
NATIONAL
CAPITOL
(Captain)**

**KOSRAE
(Captain)**

**Administration &
HR
(Captain)**



FSM
DEPARTMENT OF JUSTICE
DIVISION:
BORDER CONTROL AND MARITIME SURVEILLANCE





FSM
DEPARTMENT OF JUSTICE
Division:
IMMIGRATION AND PASSPORT SERVICES



SECRETARY OF JUSTICE

CHIEF OF IMMIGRATION & PASSPORT SERVICES

Program Manager

IMMIGRATION SERVICES

PASSPORT SERVICES

Y
A
P

C
H
U
U
K

P
O
H
N
P
E
I

K
O
S
R
A
E

H
O
N
O
L
U
L
U

P
O
R
T
L
A
N
D

G
U
A
M

Y
A
P

C
H
U
U
K

P
O
H
N
P
E
I

K
O
S
R
A
E

H
O
N
O
L
U
L
U

P
O
R
T
L
A
N
D

G
U
A
M



FSM DEPARTMENT OF JUSTICE

DIVISION:
LABOR

SECRETARY OF JUSTICE



CHIEF OF LABOR

Employment Service Office

**YAP FIELD
OFFICE**

PERMIT

**FIELD
INSPECTION**

**CHUUK FIELD
OFFICE**

PERMIT

**FIELD
INSPECTION**

**POHNPEI FIELD
OFFICE**

PERMIT

**FIELD
INSPECTION**

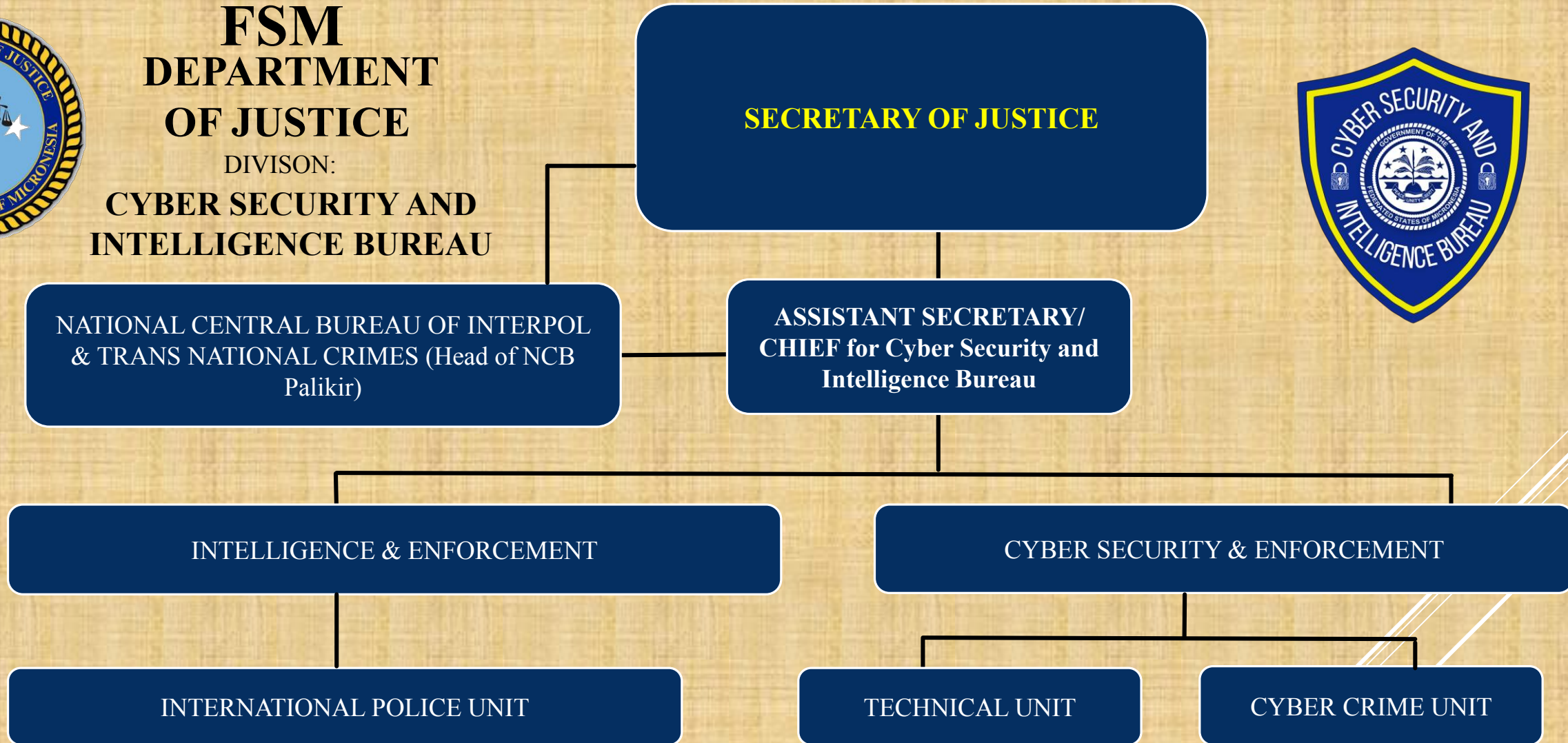
**KOSRAE FIELD
OFFICE**

PERMIT

**FIELD
INSPECTION**



**FSM
DEPARTMENT
OF JUSTICE**
DIVISION:
**CYBER SECURITY AND
INTELLIGENCE BUREAU**





FSM
DEPARTMENT
OF
JUSTICE
DIVISION:
ANTI HUMAN
TRAFFICKING SERVICES

SECRETARY OF JUSTICE



ASSISTANT SECRETARY/CHIEF for
ANTI HUMAN TRAFFICKING Services

ASSISTANT AG

YAP
VICTIM SERVICES
(Assistant Coordinator)

CHUUK
VICTIM SERVICES
(Assistant Coordinator)

POHNPEI
VICTIM SERVICES
(Assistant Coordinator)

KOSRAE
VICTIM SERVICES
(Assistant Coordinator)