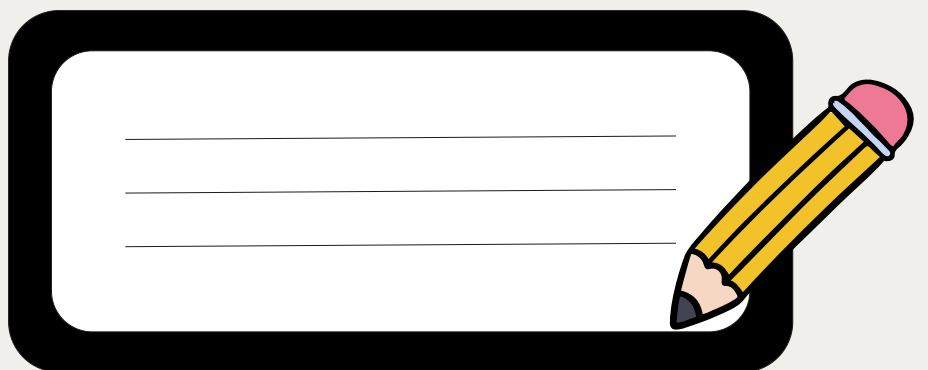


# TURTLES IN SCHOOLS

# TERM 1 WORKBOOK



Photo credit: Ricky Spencer





# TURTLES IN SCHOOLS

Produced by the  
1 Million Turtles Community  
Conservation Program  
and funded by  
The Foundation for National  
Parks and Wildlife.

In the pages that follow, you will find a comprehensive set of lesson plans.

Our initiative is not just about imparting knowledge but fostering a deep connection between students and their natural environment and instilling a sense of responsibility and awareness of freshwater turtles and their conservation.

As we embark on this educational venture, we extend our gratitude to educators, students, and all those who champion the cause of conservation. The Turtles in Schools Program is not just a curriculum; it is a movement to inspire the next generation of environmental custodians.

**Thank you,**

**1 Million Turtles Community  
Conservation Program**

# 22 LESSONS

TERM ONE

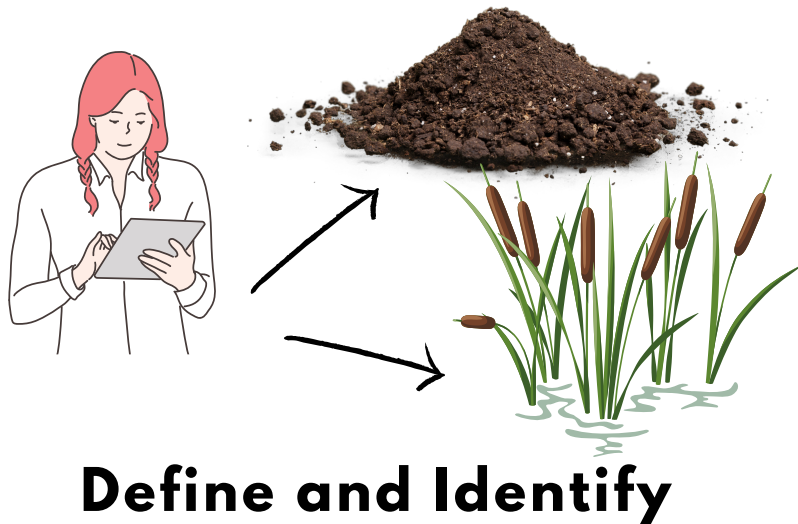
## ABIOTIC AND BIOTIC FACTORS

- Learning Intentions
- Background
- Activities
- Curriculum Mapping



# Learning Intentions

(1) Define and identify abiotic and biotic factors within the wetland environment.



**Define and Identify**

## Background Information:

### What are abiotic and biotic factors?

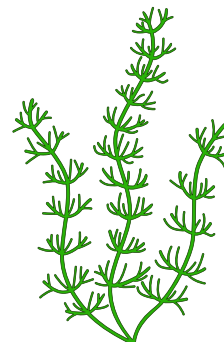
#### Abiotic

Non-living components of an ecosystem. Examples include temperature, light, air, soil, water.



#### Biotic

Living components of an ecosystem. Examples include plants, fungi, bacteria, animals.

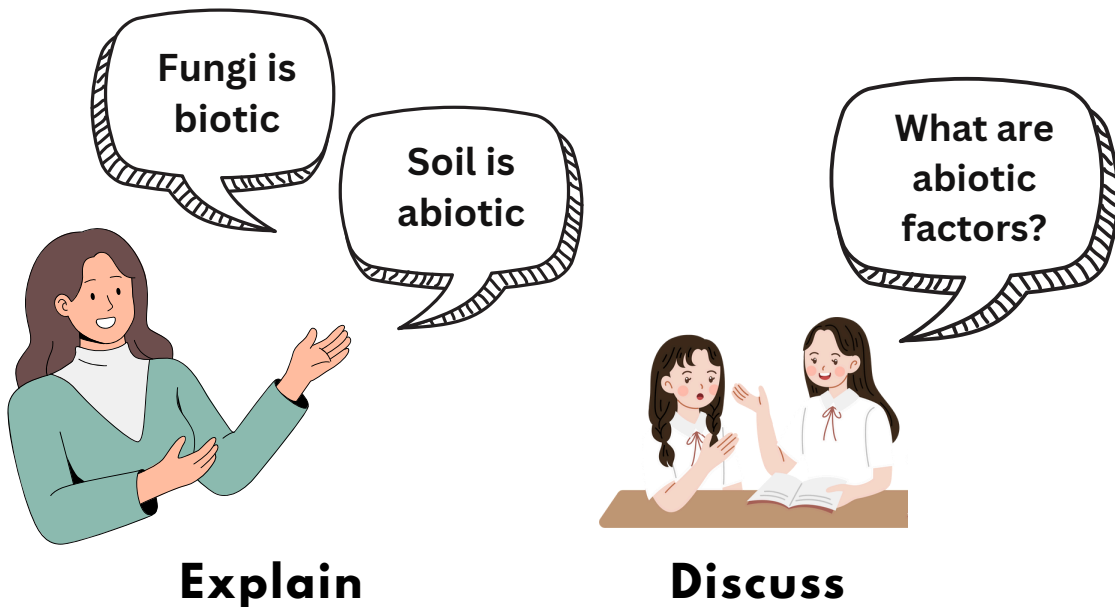


# Classroom Activities

## ACTIVITY 1

(1A) View images of wetland ecosystems.

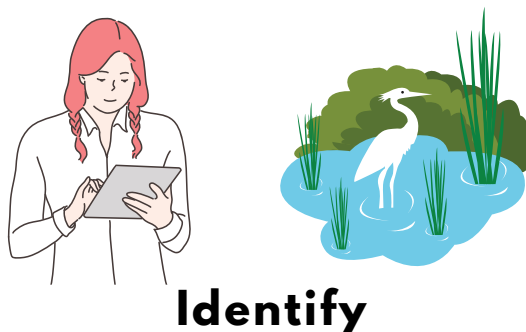
(1B) As a class, identify abiotic and biotic factors in the wetland environment. Write your ideas on the whiteboard.



## ACTIVITY 2

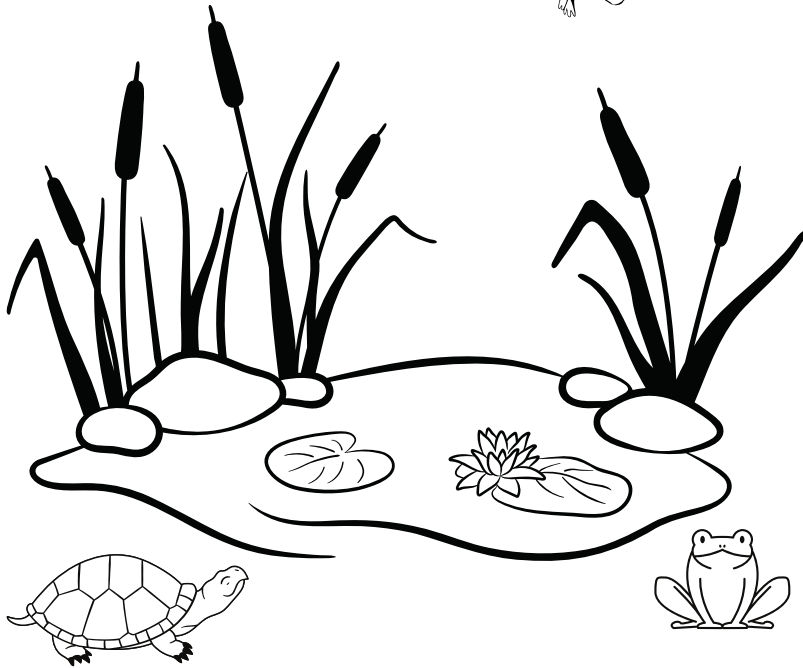
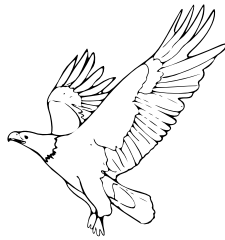
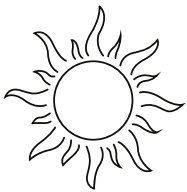
(2A) Identify biotic and abiotic factors in the worksheet.

(2B) Write a paragraph about the wetland environment in the worksheet. Identify the abiotic (A) and biotic (B) factors in your sentences.



# Abiotic & Biotic Factors

Identify the abiotic and biotic factors in the wetland below



Abiotic factors

Biotic factors

Write a paragraph about the wetland above. Identify the abiotic (A) and biotic (B) factors in your sentences.

