

TURTLES IN SCHOOLS

TERM 4 WORKBOOK

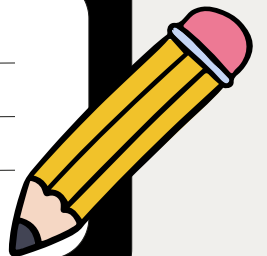


Photo credit: TurtleSAT User



1 Million Turtles

COMMUNITY CONSERVATION PROGRAM

A large, empty rectangular box with rounded corners and a thick black border, intended for writing. It contains three horizontal lines for text.



TURTLES IN SCHOOLS

Produced by the
1 Million Turtles Community
Conservation Program
and funded by
The Foundation for National
Parks and Wildlife.

In the pages that follow, you will find a comprehensive set of lesson plans. Our initiative is not just about imparting knowledge but fostering a deep connection between students and their natural environment and instilling a sense of responsibility and awareness of freshwater turtles and their conservation.

As we embark on this educational venture, we extend our gratitude to educators, students, and all those who champion the cause of conservation. The Turtles in Schools Program is not just a curriculum; it is a movement to inspire the next generation of environmental custodians.

Thank you,

**1 Million Turtles Community
Conservation Program**

CULLESSON

TERM FOUR

TURTLE NEST PREDICTOR MAPPING TOOL

- Learning Intentions
- Background
- Activities
- Curriculum Mapping

Photo credit: Dr Donald McKnight



Learning Intentions

- (1) Predict potential turtle nesting sites around your local wetland, using the Turtle Nest Predictor Mapping Tool.
- (2) Understand the role of technology in scientific data collection and the importance of digital tools and databases.
- (3) Understand the significance of Turtle Month and develop persuasive communication skills to promote awareness and participation in conservation activities.
- (4) Foster a sense of responsibility and stewardship towards turtles by actively participating in conservation efforts and advocating for their protection and habitat preservation.



Background Information

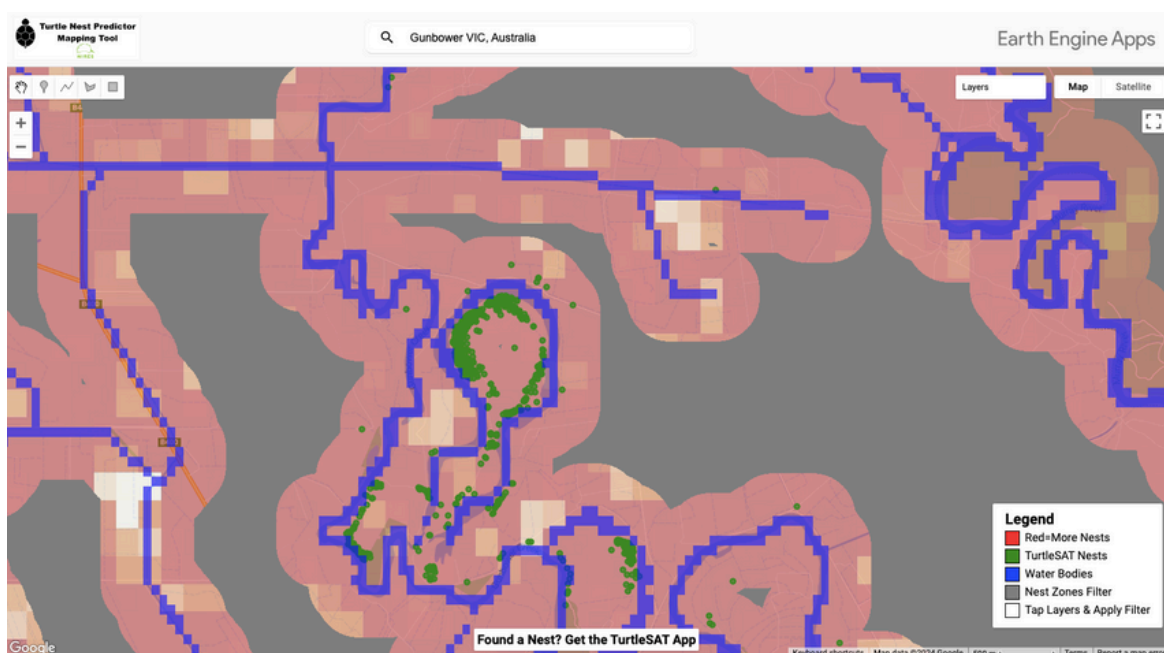
Turtle Nest Predictor Mapping Tool

The Turtle Nest Predictor Mapping Tool, developed by the 1 Million Turtles Community Conservation Program enables anyone to locate turtles in their local area. The tool uses advanced mapping techniques to predict potential nesting sites for turtles around wetlands.

The tool is powered by Google Maps, and allows you to search an area using an address or point of interest. The map will display predictive hotspots. The predictive hotspots are colour-coded ranging from white to yellow, orange and red. Areas that are red indicate a high probability (> 85%) of containing preferred turtle nesting habitat.

You can also,

- Add additional layers including:
 - Waterbodies (blue areas in the image below).
 - Known nest locations recorded in TurtleSAT (green points in the image below).
- Filter out areas where turtle nests are unlikely to be (grey areas in the image below)



Example of the Turtle Nest Predictor Mapping Tool Interface.

Background Information

November is Turtle Month!

November marks the peak nesting season for turtles across much of southern Australia, spanning Victoria, New South Wales, and South Australia. In Western Australia, nesting season begins as early as September and extends through November. During this critical period, female turtles venture onto land to lay their eggs, making them and their nests vulnerable to predation.

Turtle Month serves to raise awareness about the dangers turtles face during the breeding season and emphasises the need for conservation efforts to protect nesting sites. Citizen scientists play a crucial role during Turtle Month by recording turtle sightings, monitoring nesting activity, and actively participating in nest protection programs.

**It's Turtle
Month!**



Get Involved and Save Turtles

Classroom Activity

ACTIVITY 1

(1A) Use the “Turtle Nest Predictor Mapping Tool” to predict potential nesting sites for turtles around your local wetland.

The Turtle Nest Predictor Mapping Tool can be accessed at: <https://1millionturtles.com/predicting-turtle-nesting> (Copy and paste into browser).



ACTIVITY 2

(2A) As a class, brainstorm ideas for a Turtle Month logo. Think about symbols and imagery that represent turtles, wetlands, and conservation and how these could be included in your logo.

(2B) In small groups, design your logo. Use art supplies to create your logo on a poster or large paper. Remember to include the date of Turtle Month (November).

(2C) Present your design to the class and explain the symbolism behind your logo.

(2D) Vote on the top design (or combine elements of each) to create the logo that will be used in the following activities.

Classroom Activity

ACTIVITY 3

(3A) Write a speech to present at assembly about Turtle Month.

(3B) In your speech include:

- the importance of freshwater turtle conservation efforts.
- why November is marked as Turtle Month.
- a “call to action” inviting your peers to become part of Turtle Patrols around your local wetland in November.

(3C) Focus on clear and persuasive communication. Be creative in how you present and deliver the information - you want to engage your audience. Your speech should be 3 minutes long.



ACTIVITY 4

(4A) Write a short blurb promoting Turtle Month. In your blurb include ways people can become involved in turtle conservation efforts in November (i.e. download TurtleSAT).

(4B) The blurb should address your peers, their parents, guardians and the wider community.

(4C) Submit 1 or 2 blurbs to be included in the school newsletter.



