

TURTLES IN SCHOOLS

TERM 4 WORKBOOK

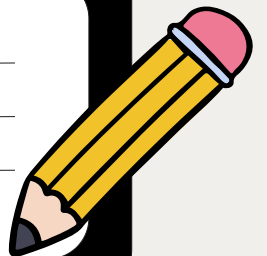


Photo credit: TurtleSAT User



1 Million Turtles

COMMUNITY CONSERVATION PROGRAM

A large, rounded rectangular box with a thick black border. Inside the box, there are three horizontal lines, suggesting a space for writing or drawing.



TURTLES IN SCHOOLS

Produced by the
1 Million Turtles Community
Conservation Program
and funded by
The Foundation for National
Parks and Wildlife.

In the pages that follow, you will find a comprehensive set of lesson plans. Our initiative is not just about imparting knowledge but fostering a deep connection between students and their natural environment and instilling a sense of responsibility and awareness of freshwater turtles and their conservation.

As we embark on this educational venture, we extend our gratitude to educators, students, and all those who champion the cause of conservation. The Turtles in Schools Program is not just a curriculum; it is a movement to inspire the next generation of environmental custodians.

Thank you,

**1 Million Turtles Community
Conservation Program**

51 LESSONS

TERM FOUR

TURTLE PATROLS - NESTING SEASON

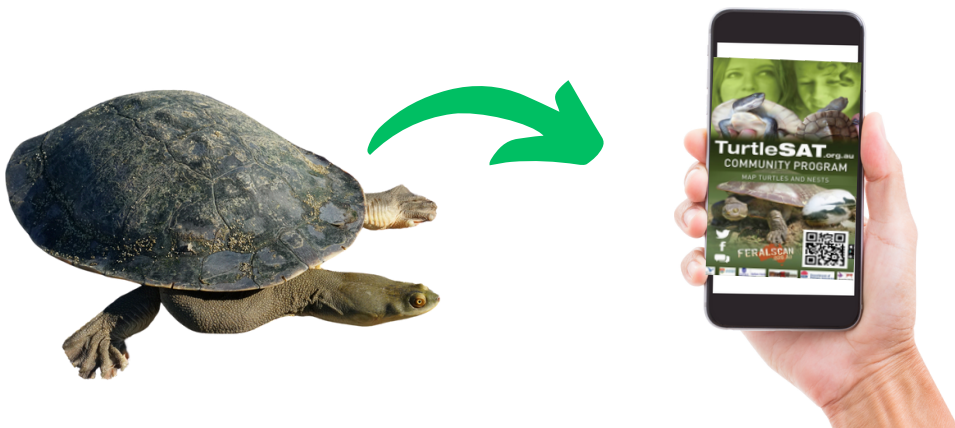
- Learning Intentions
- Background
- Activities
- Curriculum Mapping

Photo credit: Dr Donald McKnight



Learning Intentions

- (1) Facilitate your own “Turtle Patrol” at your local wetland and communicate the importance of regular patrols during turtle nesting months;
- (2) Implement nest protection over turtle nests;
- (3) Collect scientific data around turtle nesting for input into TurtleSAT, demonstrating their role as citizen scientists;
- (4) Advocate for the health of your local wetland and conservation of freshwater turtles.



Background Information

Turtle Patrols - Nesting Season

During the turtle nesting season (this may differ slightly depending on the location and the species), walk around your local wetland quietly looking for females nesting. It is best to commence your "Turtle Patrol" during or after rainstorms and heavy rain showers (especially on days where it drizzles for hours), so watch the weather carefully.

How to know if a turtle is nesting

A nesting turtle will have its rear pointed into the dirt, and its front half will be noticeably propped up. Once you have spotted a nesting turtle, it is important that you maintain a distance of a minimum of 20 metres. The nesting process can take between 2 to 3 hours.

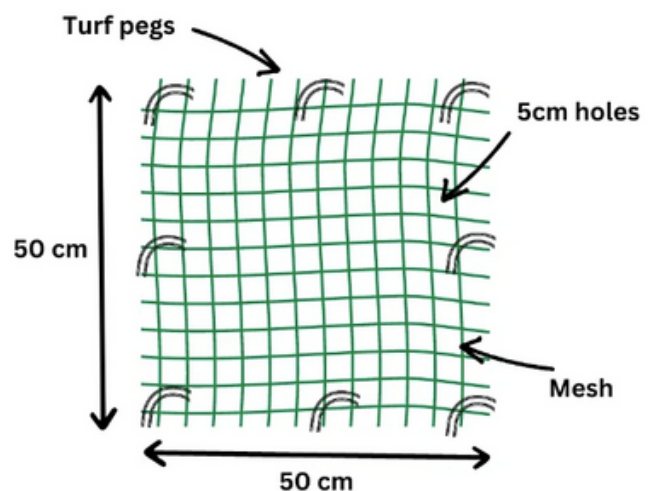
Protecting turtle nests:

Please wait until the female turtle has completely left the nesting site before heading towards the location. Place the mesh over the nest, and peg it tightly to the ground using 6 to 8 turf pegs. Use a hammer to ensure the turf pegs are firmly secured to the ground. The pegs should be secured along the outer edges of the mesh .

For more information visit: <https://1millionturtles.com/nest-protection>
(Copy and paste into browser.)



Record your sighting and nest into TurtleSAT!



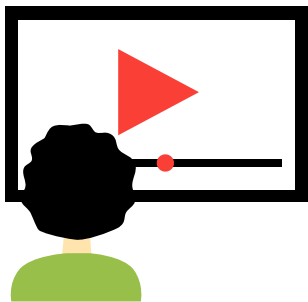
Classroom Activities

ACTIVITY 1

(1A) Watch the following video on how to implement turtle nest protection.

Link to video: <https://www.youtube.com/watch?v=dyExj3hHA-A>
(Copy and paste into browser).

(1B) Complete the Video Reflection worksheet.



Video



Risk assessment

ACTIVITY 2

(2A) Before commencing any nest protection activity, you must complete a risk assessment. This helps to keep you and the turtles safe when carrying out nest protection.

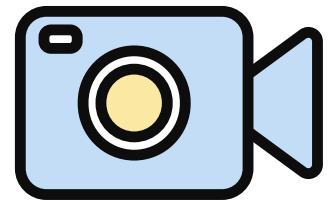
(2B) You can access a risk assessment form from the 1 Million Turtles Community Conservation Program website:

Link: <https://1millionturtles.com/nest-protection#:~:text=To%20protect%20the%20turtle%20nests,can%20be%20circular%20or%20square> (Copy and paste into browser)

Video Reflection

Three things I learnt while watching

3



Two questions I have from the video

2



One fact I found most interesting

1



Wetland Activity

ACTIVITY

Given turtle nesting usually occurs after spring/summer afternoon rains, this lesson plan is best placed as an extracurricular activity.

(1) Participate in "Turtle Patrols" at your local wetland. You can involve your friends and family in the Turtle Patrols.

(2) Walk around your local wetland and locate turtles nesting.

(3) Record the location and characteristics of the nest into TurtleSAT.

(4) Implement turtle nest protection as per the 1Million Turtles Community Conservation page.

Equipment:

- Turtle nest protection kits (mesh, pegs, hammer).
- GPS
- Record keeping sheet (i.e. with information to be entered into TurtleSAT) or alternatively phone with the TurtleSAT app installed.

