



GIFTREE

CRAFTING IDEAS

Catalogue

Metal Flasks, Sippers & Mugs



Best Viewed in
Landscape Mode

Metal Flasks, Sippers & Mugs

Contains: Vacuum Flasks, Metal bottles, and Mugs



ECO BREW

COFFEE FIBER ECO FRIENDLY MUG

Product Code : H 288



Capacity :
300 ml (approx.)

- Beautiful mug made of Eco friendly Coffee fiber
- Sustainable and responsible choice as lesser plastic gets dumped in landfills
- Large capacity
- Classic design looks like a ceramic mug
- BPA free, food safe material used



Unbreakable



Upcycled



Low CO₂
footprint



Uplift farmer



Crop-waste
used



Microwave Safe



Available
color
options



FLIP SPOUT ENABLES
YOU TO DRINK
WITH EASE



Capacity - 750ml



EASY
TO CLEAN



LEAK
PROOF



FREEZER
SAFE

Product Code : H 253

CLASSIC STAINLESS STEEL SHAKER



INCLUDES MIXER BALL
FOR EASY BLENDING

EASY TO CARRY IN BACKPACK,
CARRY BAG, GYM BAG

Capacity : 500 ml. approx.

FLIP TOP CAP WITH EASY CARRY SLOT

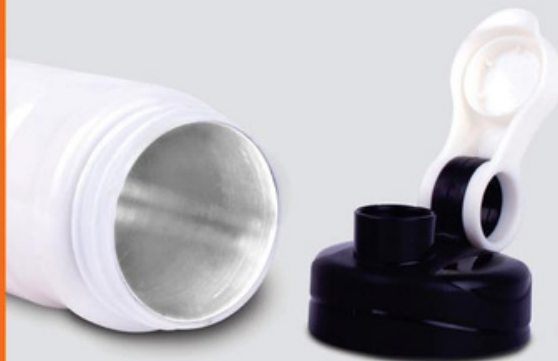


POWER **PLUS**

INSULATED STRAIGHT STEEL BOTTLE

WITH PLASTIC OUTER BODY

- Stainless steel bottle with PU Insulated outer body
- Works like a flask, keeps your drink hot / cold for upto 4 hours
- Durable & Light Weight
- BPA Free, made from Stainless steel inside
- Makes the bottle stay fresh with no odors
- Slot for carrying easily
- Leakproof, Flip top cap to drink easily



KEEPS
HOT/COLD
FOR
4-5 HOURS

Product Code
H 224



LEAK
PROOF



LIGHT
WEIGHT



WIDE
MOUTH



BPA
FREE



Designed to fit easily in car cup holders

POWER PLUS

CAFÉ MATE PRO

STAINLESS STEEL VACUUM COFFEE MUG
WITH TEMPERATURE DISPLAY



HOT & COLD
6-8 HOURS

PREMIUM FLIP TOP
LOCKING CAP

DOUBLE WALL PROTECTS YOUR
HANDS FROM BURNING BY
HOT LIQUIDS INSIDE

COMES WITH A CAP
TO STORE YOUR DRINK FOR LATER

DOUBLE WALL MUG MADE OF
STAINLESS STEEL INSIDE



DOUBLE
WALL



BPA
FREE



LEAK
PROOF

304 GRADE

STAINLESS STEEL inside

Capacity 510 ml. approx

Product Code : H 278

POWER **PLUS**

CAFÉ MATE

STAINLESS STEEL

VACUUM COFFEE MUG

Double wall protects your hands from burning by hot liquids inside

Double wall mug made of stainless steel inside

Capacity 380 ml. approx

Product Code : H 276



Elegant design,
made of
100%
stainless steel

Slim construction to
fit inside car holders easily



**LEAK
PROOF**



**BPA
FREE**



**DOUBLE
WALL**



**304
STEEL**



**HOT & COLD
6-8 HOURS**



PREMIUM FLIP TOP LOCKING CAP

**304 GRADE
STAINLESS STEEL**

POWER PLUS

Capacity 510 ml. approx

SILICON GRIP

CAFÉ BUDDY

STAINLESS STEEL

VACUUM COFFEE MUG

Elegant design,
made of
100%
stainless steel

Double wall protects your
hands from burning by hot liquids inside

Double wall mug made of
stainless steel inside



304 GRADE
STAINLESS STEEL inside

2
DOUBLE
WALL



**BPA
FREE**



**LEAK
PROOF**



**HOT & COLD
6-8 HOURS**

Product Code
H 274

SUNSET+ MAGIC SUCTION STAINLESS STEEL INSIDE

Product Code : H 280

Capacity : 360 ml approx.

POWER+
PLUS



BPA
FREE



DOUBLE
WALL



LEAK
PROOF

- High quality stainless steel double wall mug
- Mirror finish stainless steel inside for longer life

COMES WITH A LID
TO STORE YOUR
DRINK FOR LATER

MAGIC SUCTION
FEATURE ENSURES
SPILL FREE DESIGN



MUG DOESN'T FALL OFF WITH
ACCIDENTAL PUSHES, BUT CAN
BE LIFTED EASILY STRAIGHT UP

SUNSET MUG

STAINLESS STEEL

WITH LID

Capacity 360 ml approx.



Product Code : H 279



POWER PLUS

- High quality stainless steel double wall mug
- Mirror finish stainless steel inside for longer life
- Double wall protects your hands from burning by hot liquids inside
- Comes with a lid to store your drink for later



BPA
FREE



DOUBLE
WALL

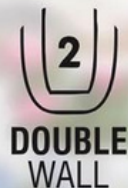


LEAK
PROOF



TRAVEL VACUUM FLASK WITH SILICON STRAP

- Double wall stainless steel vacuum insulation
- Rinse with hot/cold water before filling with hot/cold liquid for increased temperature retention



**304
STEEL**

Capacity 750ml Approx



**KEEPS HOT
FOR
6-7 HOURS**



**AMAZINGLY
LIGHT WEIGHT**



**STAY FRESH
NO ODOURS**



**SPILL &
LEAK PROOF**

Product Code : H 272

PLUM 550

DOUBLE WALL

VACUUM MUG



ANTI RUST



DOUBLE WALL



BPA FREE



LEAK PROOF

Double wall protects your hands from burning by hot liquids inside

Mug's double wall also prevents cold liquids' temperature increase by body heat



Capacity
550 ml. approx.

304 GRADE STAINLESS STEEL

Product Code : H 271

PLUM 350 **DOUBLE WALL** VACUUM MUG

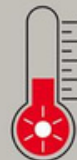


Capacity
350 ml.
approx.



Mug's double wall also prevents cold liquids' temperature increase by body heat

Double wall protects your hands from burning by hot liquids inside



KEEPS **HOT**
FOR 4-5
HOURS



Product Code : H 270

304 GRADE
STAINLESS STEEL



ANTI
RUST



DOUBLE
WALL



LEAK
PROOF



304
STEEL



BPA
FREE

LONG COLA

COLOR STAINLESS STEEL BOTTLE
WITH COLOR CAP AND CARRY STRAP



CAPACITY 900 mL APPROX.

STAINLESS STEEL



**LEAK
PROOF**



**WIDE
MOUTH**



**LIGHT
WEIGHT**



**BPA
FREE**

Product Code
H 241 A

STRAIGHT STEEL VACUUM FLASK

with Press Flow Lid



Capacity
500 ml.
approx.



- Vacuum flask with press lock cap
- Double wall stainless steel vacuum insulation with food grade 304 stainless steel inside
- Rinse with hot/cold water before filling with hot/cold liquids for increased temperature retention
- Matte black finish body looks premium



**LEAK
PROOF**



**DOUBLE
WALL**

Product Code : H 262



POWER PLUS



Hot / Cold

Press cap
to pour,
Press again
to close



**304 GRADE
STAINLESS STEEL**

POWER **PLUS**



**304 GRADE
STAINLESS STEEL**

Capacity
400 ml.
approx.

BAMBOO **DOUBLE WALL** **STEEL MUG**

Elegant design,
made of
100%
stainless steel



Double wall protects
your hands from burning
by hot liquids inside



Leak proof cap
with Sliding cover
to store your
drinks for later



BAMBOO BASE ADDS TO
THE **MUG'S APPEAL**

Product Code : H 265



**304
STEEL**



**DOUBLE
WALL**



**BPA
FREE**



**LEAK
PROOF**



**ANTI
RUST**



DELTA

STEEL VACUUM FLASK WITH FINGER SLOT

- Delta steel vacuum flask comes with finger slot
- Double wall stainless steel vacuum insulation
- Wide mouth helps add ice cube easily
- Rinse with hot/cold water before filling with hot/cold liquids for increased temperature retention
- Matte black finish body looks premium



**304
STEEL**



**LEAK
PROOF**



**DOUBLE
WALL**



**12^h
Cold**



**8^h
Hot**

Capacity
600 ml.
approx.



Product Code : H 263

CAPACITY **1L**
APPROX.



FLORA

STEEL BOTTLE COLORED



**LEAK
PROOF**



**LIGHT
WEIGHT**



**WIDE
MOUTH**



**BPA
FREE**

packing
in
White
Box



STAINLESS STEEL

Product Code : H - 282





FLORA

STEEL BOTTLE NATURAL



**LEAK
PROOF**



**LIGHT
WEIGHT**



**WIDE
MOUTH**



**BPA
FREE**

Product Code : H - 281

STAINLESS STEEL



packing
in
White
Box



Capacity **750 ml.** approx.

POWER **PLUS**

Square

INSULATED STEEL BOTTLE

- Stainless Steel inside & food safe plastic outside
- Bottle has silicon strap to hold and carry easily
- Bottle Keeps liquid hot / cold for 4-6 hours



BOTTLE HAS
SILICON STRAP
TO HOLD
AND CARRY EASILY



STAINLESS STEEL inside



HOT & COLD
4-6 HOURS



**AMAZINGLY
LIGHT WEIGHT**



**STAY FRESH
NO ODOURS**



**SPILL &
LEAK PROOF**

Product Code
H 268

FOGGY+ STAINLESS STEEL COFFEE MUG WITH CARABINER HANDLE

Capacity **350 ml.** approx.

POWER **PLUS**



High quality
stainless steel
double wall mug

Mirror finish
steel inside
for longer life

Double wall protects
your hands from
burning by hot
liquids inside

Double wall also
prevents cold liquids'
temperature increase
by body heat



LEAK PROOF



DOUBLE WALL



Available in 3 Colors



Black



Yellow



Peach

Product Code : H 252

POWER **PLUS**

Capacity **350 ml.** approx.

Product Code : H 255

STAINLESS STEEL inside

FLASH Stainless Steel INSULATED COFFEE MUG

Comes with a cap to store your drink for later

Double wall protects your hands from burning by hot liquids inside



High quality stainless steel double wall mug

Mirror finish steel inside for longer life





KEEPS
HOT & COLD
4-6 HOURS

Capacity 375 ml. approx.

HEXA INSULATED TALL SIPPER MUG

POWER **PLUS**



ANTI
RUST



DOUBLE
WALL



LEAK
PROOF

Mug's double wall also
prevents cold liquids
temperature increase
by body heat



BPA
FREE

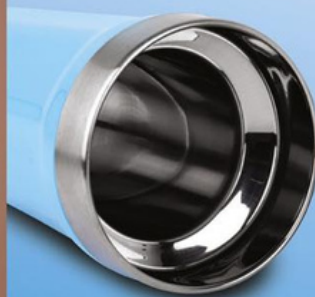


304
STEEL

Double wall protects
your hands from burning
by hot liquids inside



Double wall mug made
of 304 grade food-safe
stainless steel inside



Comes with a
cap to store your
drink for later

Product Code : H 254

304 GRADE

STAINLESS STEEL inside



1 L. FLASK WITH HANDLE

LID ACTS AS CUP | 360 DEGREE POURING SPOUT

CAPACITY
1L
APPROX.



THE PERFECT SIZE

EASY TO CARRY ANYWHERE YOU GO

SWEAT AND BURN FREE

THERMOS CAP

LEAK PROOF

VACUUM INSULATED



Cold



Hot



LEAK PROOF



BPA FREE LID



WIDE MOUTH

Product Code : H 259

OMEGA VACUUM FLASK WITH PRESS LOCK CAP

POWER PLUS

- Double wall stainless steel vacuum insulation with food grade 304 stainless steel inside
- Rinse with hot/cold water before filling with hot/cold liquids for increased temperature retention
- Matte black finish body looks premium



**304 GRADE
STAINLESS STEEL** inside



**304
STEEL**



**LEAK
PROOF**



**DOUBLE
WALL**



Capacity
700 ml.
approx.

Product Code : H 257

POWER PLUS

PREMIA II GLASS MUG

WITH FULL SILICON SLEEVE & LID



Product Code : H 256

- Elegant glass mug with silicon sleeve
- Complete Silicon sleeve on body to protect your hands from burning from hot liquid inside
- Keeps the contents pure and free from contamination



LEAK PROOF



BPA FREE



NON TOXIC



SEPARATE SLOT FOR USE WITH STRAW

Capacity: 350 ml approx.



SILICON LID



Available in 3 Color



POWER PLUS

PREMIA GLASS MUG

WITH SILICON GRIP & FLIP TOP LID



LEAK PROOF



BPA FREE



NON TOXIC

- Elegant glass mug with silicon sleeve
- Colorful sleeve on body to protect your hands from burning from hot liquid inside
- Non-Toxic, free of harmful metals
- Keeps the contents pure and free from contamination

Product Code : H 246

Capacity: 350 ml approx.

FLIP TOP LID FOR EASE OF USE





STAINLESS STEEL



CAPACITY
900ml
APPROX.

LONG COLA

COLOR STAINLESS STEEL BOTTLE



**LEAK
PROOF**



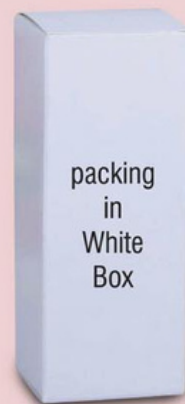
**LIGHT
WEIGHT**



**WIDE
MOUTH**



**BPA
FREE**



packing
in
White
Box

Product Code : H - 261

CAPACITY
900ml
APPROX.

LONG COLA

STAINLESS STEEL BOTTLE



**LEAK
PROOF**



**LIGHT
WEIGHT**



**WIDE
MOUTH**



**BPA
FREE**



Product Code : H - 260

POWER **PLUS**

LINCOLN *Lite*

2 TONE STAINLESS STEEL MUG

Product Code : H 249



STAINLESS STEEL

inside



Capacity
300 ml
approx.



Comes with a
cap to store your
drink for later

Double wall
protects your
hands from
burning by hot
liquids inside



DOUBLE
WALL



BPA
FREE



LEAK
PROOF



ANTI
RUST



Elegant design,
made of
100%
stainless steel inside



Enjoy your Coffee in the original Power Plus mug

LINCOLN

2 TONE MAGIC

SUCTION MUG

Capacity
300 ml approx.



Product Code : H 251

Magic suction feature
ensures spill free design



Mug doesn't fall off
with accidental pushes,
but can be lifted easily
straight up with handle

Enjoy your Coffee in the original Power Plus suction mug



STAINLESS STEEL
inside

Elegant design,
made of 100%
stainless steel inside

POWER **PLUS**



**DOUBLE
WALL**



**BPA
FREE**



**LEAK
PROOF**



**ANTI
RUST**



Capacity 750 ml. approx.

POWER **PLUS**

Candy **INSULATED STEEL BOTTLE WITH FLIP TOP LID**

- Stainless Steel inside & food safe plastic outside
- Bottle has silicon strap to hold and carry easily
- Bottle Keeps liquid hot / cold for 4-6 hours



BOTTLE HAS
SILICON STRAP
TO HOLD
AND CARRY EASILY

Product Code : H 248

STAINLESS STEEL inside



**HOT & COLD
4-6 HOURS**



**AMAZINGLY
LIGHT WEIGHT**



**STAY FRESH
NO ODOURS**



**SPILL &
LEAK PROOF**



Available in 4 Colors



GRIPPER

INSULATED STEEL BOTTLE

WITH FLIP TOP LID



Capacity 750 ml. approx.



STRAP FOR CARRYING EASILY



- Stainless steel bottle with PU Insulated outer body
- Durable & Light Weight
- Made from high-quality Stainless steel
- Flip top lid for ease of drinking
- Electropolished inside to increase durability and to make the bottle bacteria resistant
- Makes the bottle stay fresh with no odors
- Sturdy construction



Electropolished inside to finish hiding spots of bacteria and viruses



Hot & Cold
4-6 Hours



Spill &
Leak Proof



STAINLESS STEEL inside

POWER PLUS



AMAZINGLY
LIGHT WEIGHT



DURABLE
CONSTRUCTION



STAY FRESH
NO ODOURS



ERGONOMICAL DESIGN
EASY TO CARRY

Product Code : H 243

Sports Flask - H 130

with bubble grip



Best for Sports People



Silicon sleeve specially designed for better grip



Finger ring on the lid to carry easily



Special mechanism, no visible threads

Features

- Fresh design that can be carried like a sipper
- Keeps beverages hot till 12 hours and cold up to 24 hours!
- Double insulated with vacuumization technology for superior temperature retention
- Made of high quality, food grade 18/8 stainless steel
- Silicon sleeve on the body for a better grip
- Designed to fit easily in car cup holders
- Capacity: 600 ml (approx)

Colors Available:

White

Pink

Black





FLIPPY

Stainless Steel Bottle
with Flip top colored Lid



LEAK
PROOF



LIGHT
WEIGHT



BPA
FREE



WIDE
MOUTH

CAPACITY
700ml
APPROX.

STAINLESS STEEL



Product Code : H - 242

PERFECT FOR STUDENTS

STEEL BOTTLE WITH SILICON RING HANDLE

Capacity 1 Ltr. approx

CAPACITY
1L
APPROX.



LEAK PROOF



LIGHT WEIGHT



BPA FREE LID



WIDE MOUTH



Product Code - H 239

POWER **PLUS**



Capacity
500 ml.
approx.

304 GRADE
STAINLESS STEEL inside

Product Code : H 184

SLIM COLA

STAINLESS STEEL

VACUUM FLASK

WITH PU SLEEVE

- Beautiful flask made of high quality 304 grade Stainless steel
- Vacuumized and double walled for better temperature retention
- Keeps hot / cold for up to 6-12 hours!
- Slimmer version of Cola shape flask, also known as cola bottle
- Comes with a PU sleeve for carrying easily and enhancing beauty
- Beautiful design, easy on eyes



**DOUBLE
WALL**



**LEAK
PROOF**



**304
STEEL**



FLASH

Stainless Steel
COFFEE MUG



Product Code : H 235

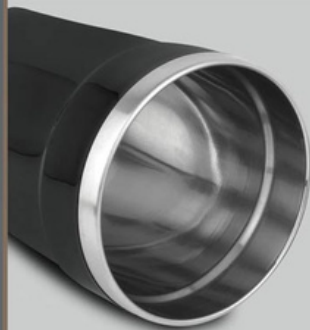


**KEEP YOUR
HANDS SAFE**



**KEEP YOUR
DRINK HOT**

Capacity
350 ml. approx.



POWER PLUS



**ANTI
RUST**



**DOUBLE
WALL**



**BPA
FREE**



**LEAK
PROOF**

High quality stainless steel
double wall mug

Mirror finish
steel inside for longer life

Double wall protects your
hands from burning by hot
liquids inside

Comes with a cap to
store your drink for later



HEXA

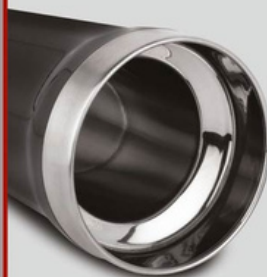
TALL SIPPER MUG



Capacity
375 ml.
approx.

304 GRADE
STAINLESS STEEL inside

POWER PLUS



Double wall mug made of 304 grade food-safe stainless steel inside

Comes with a cap to store your drink for later

Double wall protects your hands from burning by hot liquids inside

Mug's double wall also prevents cold liquids' temperature increase by body heat



Product Code : H 234



**ANTI
RUST**



**BPA
FREE**



**DOUBLE
WALL**



**LEAK
PROOF**



TO PLAY VIDEO

SHINY

SS COFFEE MUG WITH HANDLE

WITH HANDLE & INCLUDED CAP



STAINLESS STEEL inside

Capacity
225 ml.
approx.



Product Code : H 237



NOBLE

STAINLESS STEEL
COFFEE MUG

POWER **PLUS**



Product Code :
H 229



CAPACITY
460ML APPROX

- High quality stainless steel double wall mug
- Mirror finish stainless steel inside for longer life
- Double wall protects your hands from burning by hot liquids inside
- Mug's double wall also prevents cold liquids' temperature increase by body heat
- Comes with a cap to store your drink for later

STAINLESS STEEL
inside



Available in 2 colors
custom colors can be made on request



OXFORD

STAINLESS STEEL

COFFEE MUG

POWER **PLUS**

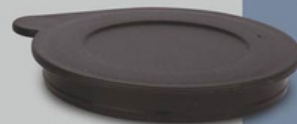
CAPACITY
460ML APPROX



- Double wall protects your hands from burning by hot liquids inside
- Double wall mug made of stainless steel inside
- Comes with a cap to store your drink for later



STAINLESS STEEL
inside



BPA
FREE



LEAK
PROOF



ANTI
RUST



DOUBLE
WALL

Product Code : H 228

Available in 2 colors
custom colors can be made on request





LEAK PROOF



LIGHT WEIGHT



BPA FREE LID



WIDE MOUTH

CURVY STEEL BOTTLE COLORED

Capacity 750ml. approx

CAPACITY
750ml
APPROX.

packing
in
White
Box

Product Code - H 233



STAINLESS
STEEL

CURVY STEEL BOTTLE NATURAL

Capacity 750ml. approx

CAPACITY
750ml
APPROX.



LEAK PROOF



LIGHT WEIGHT



BPA FREE LID



WIDE MOUTH



packing
in
White
Box

Product Code - H 232



Product Code
H 231

CURVY STEEL BOTTLE COLORED

Capacity 1 L. approx



LEAK PROOF



LIGHT WEIGHT

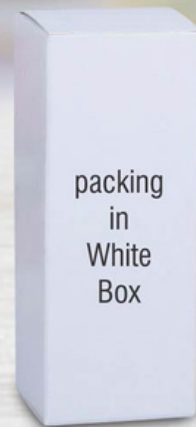


BPA FREE LID



WIDE MOUTH

CAPACITY
1L
APPROX.



packing
in
White
Box



Product Code - H 230



CURVY STEEL BOTTLE NATURAL

Capacity 1 L. approx



LEAK PROOF



LIGHT WEIGHT



BPA FREE LID



WIDE MOUTH

CAPACITY **1L**
APPROX.



packing
in
White
Box

OSCAR

STAINLESS STEEL COFFEE MUG WITH HANDLE

Product Code : H 227

POWER **PLUS**



LEAK PROOF



DOUBLE WALL



High quality stainless steel
double wall mug

Mirror finish steel inside
for longer life

Store your drink for later with
flip top drinking vent protector

Capacity **350 ml.**
approx.



Other color options

FOGGY

STAINLESS STEEL COFFEE MUG

POWER **+** PLUS

High quality stainless steel
double wall mug

Mirror finish steel inside
for longer life

Store your drink for later with
flip top drinking vent protector



LEAK PROOF



DOUBLE WALL

Capacity **350 ml.**
approx.



Product Code : H 226

Other color options

TALL SIPPER MUG



**304 GRADE
STAINLESS STEEL** inside

Product Code : H 223



Double wall mug made of 304 grade food-safe stainless steel inside



Capacity 375 ml. approx.



Double wall protects your hands from burning by hot liquids inside

Mug's double wall also prevents cold liquids' temperature increase by body heat



Comes with a cap to store your drink for later with flip-top drinking vent protector



CLICK

TO PLAY VIDEO

ROYAL

Stainless Steel Vacuum Mug - H 207



- Exclusive Stainless Steel finish
- The Air-tight lid prevents spillage
- Beautifully designed handle for an easy grip
- Leak proof
- Double Walled
- Vacuumized
- Keeps the beverage warm for 4 to 6 hrs.
- Made from high quality materials

POWER PLUS



Inside



Leakproof



Easy Grip



Double Wall



POWER **PLUS**



Capacity **500 ml.** approx.

BAMBOO COLA VACUUM FLASK

- Double wall insulated Vacuum bottle made of 304 grade stainless steel inside and outside
- Retains temperature for 12-24 hours
- Leakproof lid
- Natural bamboo on the body adds to the product appeal



DOUBLE WALL



LEAK PROOF



24^h
Cold



12^h
Hot



Product code : H 199

MADE OF **304 GRADE STEEL & BAMBOO**

COLA METAL **WATER BOTTLE** WITH STEEL CAP

Product Code : H 198

STORES ABOUT
600 ML LIQUID



ENGRAVING COLOUR **SILVER**



**GREAT FOR
PROMOTIONS!**

**STEEL FINISH CAP
FOR PREMIUM LOOK**

**AVAILABLE IN
3 COLOURS**



packing
in
White
Box

FLIP TOP METAL WATER BOTTLE

Product code : H 193



ENGRAVING COLOUR **SILVER**

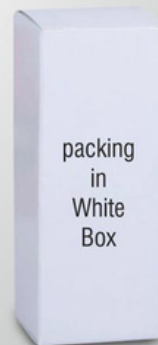


**GREAT FOR
PROMOTIONS!**

**FLIP TOP CAP
WITH
CARRY HANDLE**



Capacity
600 ml.
approx.



packing
in
White
Box

AVAILABLE IN
3 COLOURS



METAL WATER BOTTLE WITH SILICON CARRY STRAP

Product code : H 192



COLORED
PLASTIC CAP
WITH SILICON STRAP

STORES ABOUT
600 ML LIQUID



GREAT FOR
PROMOTIONS!



packing
in
White
Box

ENGRAVING COLOUR **SILVER**

CAP AVAILABLE IN 4 COLOURS



Dual Tone Vacuum Bottle

Capacity 500 ml - H 220



Stainless steel

Double insulated
wall

Keeps your drinks
hot or cold for up to
24 hours

Capacity 500 ml (Approx.)

Dual Tone Double Cap Vacuum Flask / Sipper Bottle

Double cap set included | Capacity 800 ML - H 218

Capacity 800 ML (Approx.)

Stainless steel

Double insulated wall

Keeps your drinks hot or cold for up to 24 hours



Cap A



Cap B



Prism Steel Bottle Colored - H 205

Capacity 1L approx



LEAK PROOF



LIGHT WEIGHT



BPA FREE LID



WIDE MOUTH

CAPACITY **1L**
APPROX.

Available 2 colors



Cap A



Cap B



packing
in
White
Box

Custom color can be made on request



Straight Steel Bottle Colored

Capacity 750ml. approx



LEAK PROOF



WIDE MOUTH



LIGHT WEIGHT



BPA FREE LID

CAPACITY
750ml
APPROX.

Available 4 colors



Custom color can be made on request

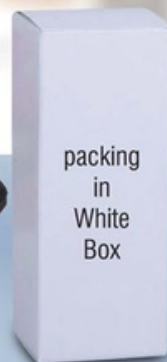
Product Code - H 203



Cap A



Cap B



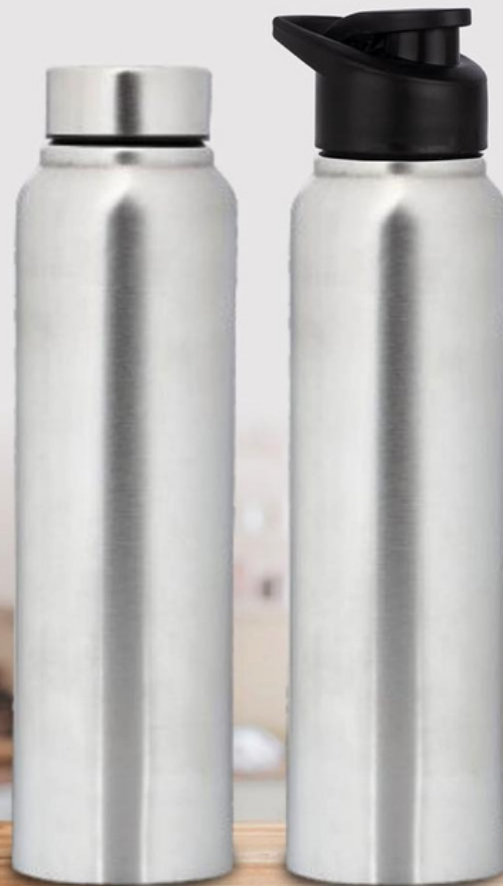
packing
in
White
Box



Straight Steel Bottle Natural - H 202

Capacity 750ml. approx

CAPACITY
750ml
APPROX.



Cap A

Cap B



LEAK PROOF




WIDE MOUTH



LIGHT WEIGHT



BPA FREE LID

Available
Silver Color 



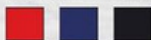
Cap A



Cap B



Available 3 colors



Cap A



LEAK PROOF



WIDE MOUTH



LIGHT WEIGHT



BPA FREE LID

Straight steel bottle Colored
Capacity 1L approx

CAPACITY **1L**
APPROX.

Product Code
H 201



packing
in
White
Box



Cap B

Custom color can be made on request

Zen

Stainless steel Bamboo Vacuum Flask - H 191 with Tea Strainer

POWER PLUS

- Super premium flask with a mix of steel and bamboo
- 304 grade steel used inside with natural bamboo outside
- Fully Vacuumized, retains temperature for 12-24 hours!
- Natural bamboo on the body and lid gives a very elegant look
- Tea strainer allows for both hot and cold detox tea brews
- Rust free, BPA free, leakproof construction

Capacity: 500 ml (approx)



BPA Free



Leakproof



24^h
Cold



12-24^h
Hot



Inside



CAPACITY **1L**
APPROX.

Prism steel bottle Natural - H 204

Capacity 1L approx



LEAK PROOF



LIGHT WEIGHT



BPA FREE LID



WIDE MOUTH

packing
in
White
Box



Cap A

Cap B

STAINLESS
STEEL

packing
in
White
Box

Straight Steel Bottle Natural - H 200

Capacity 1L approx

CAPACITY **1L**
APPROX.



LEAK PROOF



WIDE MOUTH



LIGHT WEIGHT



BPA FREE LID

Cap A

Cap B

Available
Silver Color



Eco Mug

Eco Friendly Coffee Mug with Steel Inside - H 187

WE'VE GONE
GREEN | **BY USING
ECOCUPS**

Made of Eco friendly wheat fiber



White Gift Box

- Sustainable and responsible choice as lesser plastic gets dumped in landfills
- Has a fitting cover with silicon ring around
- Outer body made of responsibly sourced wheat fiber
- BPA free, food safe material used

Eco Friendly
Coffee Mug
with Steel Inside



CLICK HERE



TO PLAY VIDEO



Capacity : 750ml Approx.

Pride

Stainless Steel Vacuum Flask - H 181

POWER PLUS

- High quality flask made of high quality 304 grade stainless steel
- 304 steel used both inside and outside the flask
- Slim construction to fit inside car holders easily
- Fully Vacuumized, retains temperature for 18-24 hours!
- Silicon cover on the lid for ease and comfort of use
- Capacity: 750 ml (approx)

Silicon cover on the lid for ease and comfort of use



Hot / Cold



Inside / Outside

Slim construction to fit inside car holder easily



Capacity : 750ml (approx)

Pearl Double Cap Vacuum Bottle - H 165 with carry loop (750 ml approx)

- Fresh design stainless steel bottle in metallic finish
- Made of 304 grade food-safe stainless steel inside
- Keeps your beverage hot/cold for more than 6 hours
- Double cap design : Small cap to drink and pour, and wide mouth cap to fit ice cubes and fill the bottle easily
- Bigger lid also acts as an emergency cup while travelling

Made of 304 grade food-safe stainless steel inside



Double Cap Design



CAMBRIDGE

Magic Stainless steel Mug with 304 steel - H 168
(Spill free design)

Magic suction
feature ensures
spill free design



Mug doesn't fall
off with accidental
pushes, but can be
lifted easily straight
up with handle

POWER PLUS [®]



Handle grip with
finger marks for
a better user
experience

Elegant design,
made of
food-safe 304
stainless
steel inside



Grade
304
Steel

CLICK HERE

(470 ml approx)



TO PLAY VIDEO

ULTIMA

Premium Revolving Kettle - H 164

In 304 Stainless Steel

POWER PLUS [®]

- Double wall vacuum technology for maximum temperature retention.
- Keeps your beverage hot or cold for upto 12 hours. (depending on usage)



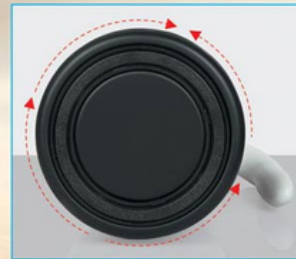
Capacity
2L



Single hand operation.
Easy push button



Easy pull up/ push down cap
locks easily and save time



Rotation function on
bottom for more seamless use



Foodsafe 304 stainless
steel used inside/outside

Wilson

Stainless Steel Flask with Carry Handle - H 161

- Keeps your beverage hot for upto 8 hours and cold upto 12 hours
- Rinse with hot/cold water before filling with hot/cold liquids for increased temperature retention
- Matte black finish body looks premium

Vacuum flask with steel cap and movable handle for carrying comfortably

Capacity: 500ml (approx)

Double wall stainless steel vacuum insulation with food grade 304 stainless steel inside

Removable middle cap for better cleaning and widen mouth



Mighty

Stainless Steel Magic Coffee Mug
with silicon strap - H 139

POWER **PLUS** [®]

Made of food-safe
304 stainless steel inside



Easy lift up cap to protect
the drinking vent






Mug doesn't fall off with
accidental pushes, but can be
lifted easily straight up



350 ml.

- Magic suction feature ensures spill free design.
- Premium silicon strap to hold the mug and wrap around hand easily.

Available in 3 colors   



SPILL FREE DESIGN





Lustre

Stainless Steel Double Wall Mug - H 137

- Double wall mug made of 304 grade food-safe stainless steel inside
- Double wall protects your hands from burning by hot liquids inside
- Mug's double wall also prevents cold liquids' temperature increase by body heat
- Comes with a cap to store your drink for later with slider drinking vent protector
- Capacity: Approx 425 ml





Colorful Coffee mug - H 127 **(with Stainless Steel inside)**

Available in 5 beautiful colors (others available on request)



Blue



Black



Amber
(Orange-Yellow)



Magenta



Ivory

Easy Pour Flask - H 110

POWER PLUS®

Easy Push Button



Features:

- Double wall stainless steel vacuum insulation technology for maximum temperature retention.
- Keeps your beverage hot or cold for upto 24 hours.
- Strong handle can easily hold the weight of whole pot of water.
- One touch stopper with soft silicone cover, easy for use.
- Galvanised press button with top notch finish.
- Food grade stainless steel cover on lid. Your beverage only comes in contact with stainless steel.



**Double wall
stainless steel
vacuum insulation**

Available in 2 colors : Black and White

Vacuumized Stainless Steel Sipper - H98

in Honeycomb Design
(with tea/ fruit infuser pocket)



Removable infuser pocket made of durable Eastman TRITAN™ can be used to make Green / Herbal Tea and infused, fruit flavoured water



- Double wall SS Vacuum insulation technology for maximum temperature retention
- Keeps your beverage hot or cold for more than 24 hours!
- Rubber bottom for better grip on smooth surfaces
- Premium honeycomb design in brushed steel finish adds to the luxurious feel
- Separate space for branding
- Capacity: 550ml.



Available in 2 colors:

Metallic Gray



Champagne



Branding space



[CLICK HERE](#)

Spill proof sipper
controls the flow
making it excellent for travelling



TO PLAY VIDEO

POWER PLUSTM

Double Walled
Crystal
SIPPER
H44

AVAILABLE IN TWO COLORS



vaccumized
beverage carrier

Capacity
350ml (approx.)



LUXURIOUS LOOK

Beautiful crystal finish on the lid brings in a luxurious feel.

COMPACT SIZE

Its small size makes it easy to carry even in a small bag.

This beautiful sipper is a great travel companion due to its **compact size**, attractive finish and has the ability to retain the temperature of **Hot or Cold beverages** for **more than 24 hrs**



Capacity 420 ml (approx.)

FLASK FEATURES

Vacuumized

Double walled

Leak Proof

Exclusive Stainless Steel finish

The Air-tight lid prevents spillage



Keeps the Beverage warm
for **4 to 6 hrs**

Beautifully designed handle for an easy grip.

The vacuumized lid design perfectly combines
form & function



Ferrero

Stainless Steel Magic Coffee Mug - H 138

Spill Free Design



Made of Stainless
Steel both inside
and outside

Easy lift up cap
to protect the
drinking vent

Mug doesn't fall off with accidental pushes,
but can be lifted easily straight up

300 ml.

- Food-safe 304 stainless steel used inside
- Magic suction feature ensures spill free design
- Premium silicon grip on the body for a better grip and a premium feel
- Available in 2 Colours : Black and White



CLICK HERE



TO PLAY VIDEO

Cola Premium Vacuum Flask



- This premium flask is made of high quality 304 grade stainless steel
- Fully insulated, double walled & Vacuumized for better temperature retention
- Retains temperature for upto 16 hours!
- Cola flask, also known as cola bottle is a stylish way to carry your beverages
- Has a silicon ring around the cap for comfortable grip
- Comes with a storage pouch for carrying easily
- Beautiful design, easy on eyes
- Capacity: 750 ml (approx)



Available in 2 colors:
Wine Red & Metallic Gray



Storage pouch
for carrying easily

Car Heater Mug - H97

with car / USB charger



- Be it home, office or car, this mug allows you to keep your beverage hot for long periods of time every where.
- Has a 12v socket which can be plugged into the car's socket.
- Socket converts into a USB plug, making it suitable for use with computers, power banks, or electricity.
- When plugged through USB port, the mug can keep your hot beverages hot; but when used in car, it is powerful enough to even make your cold beverage hot!
- Double wall for convenient holding



Wire can be separated to use as a regular mug



Now take your tea / coffee with you and keep it hot!



Detachable socket for use in car or with USB



Half turn mechanism for pouring prevents spilling during journeys



POWER PLUS TM

Vacuumized
TRAVEL FLASK
Double Walled

H 43

FLASK FEATURES

Vacuumized

Cover acts as a travel cup

Capacity 500ml (approx.)

Ability to retain beverage temperature
for more than 12 - 16 hrs

TRAVEL
Companion

Available in 2 Colors



Contact us:

Neha Jhavar
+919958874096

Mahima Gupta
+919711086819

email: craftingideas@gifttree.co.in
website: www.gifttree.co.in