

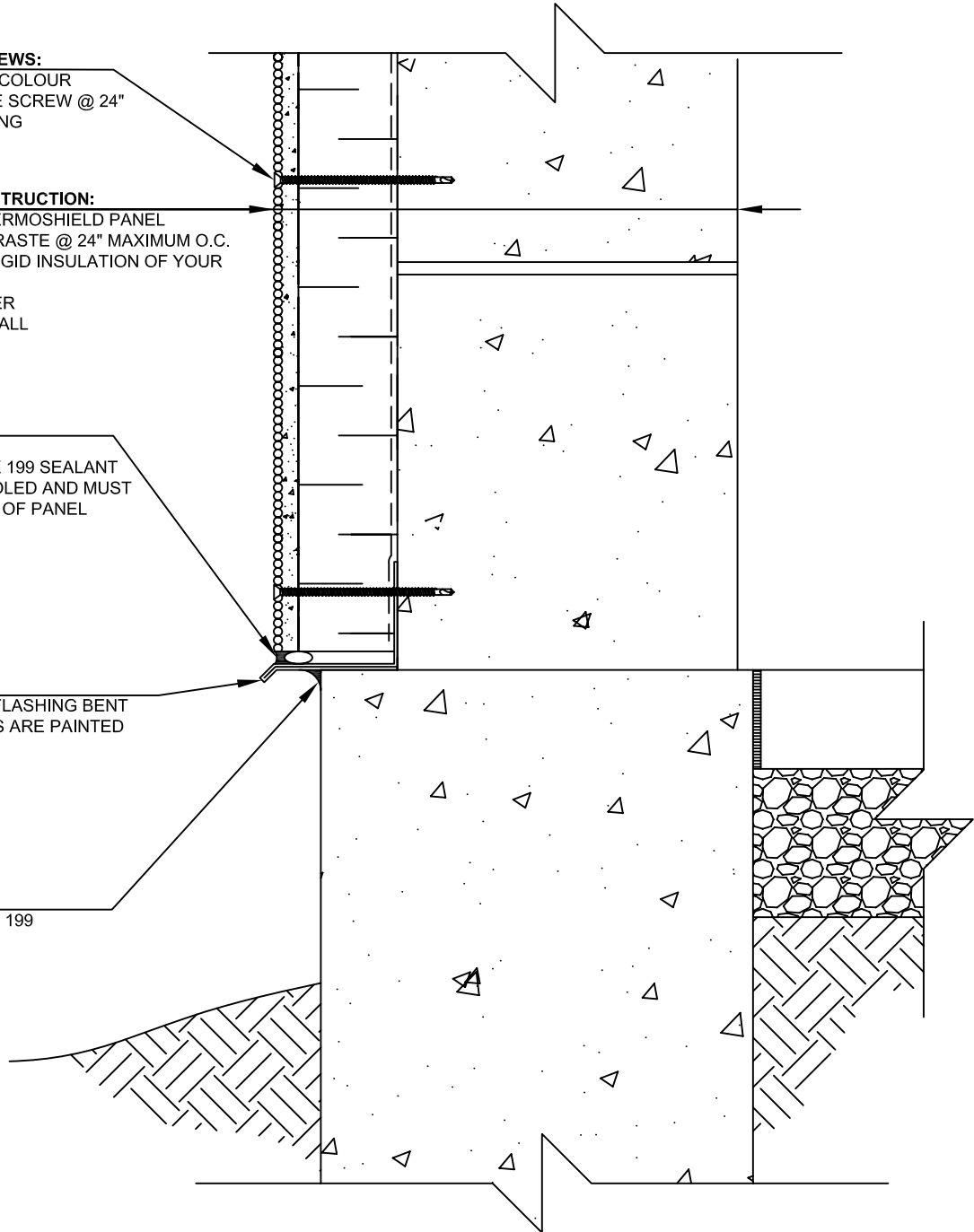
CONSTRUCTION SCREWS:
 3/16" X 4" FLAT HEAD COLOUR
 MATCHED CONCRETE SCREW @ 24"
 O.C. MAXIMUM SPACING

TYPICAL WALL CONSTRUCTION:
 2-3/8" SYNSTONE THERMOSHIELD PANEL
 SECURED TO SUBSTRATE @ 24" MAXIMUM O.C.
 COMES WITH 2" OF RIGID INSULATION OF YOUR
 CHOICE
 AIR / VAPOUR BARRIER
 CONCRETE BLOCK WALL

SEALANT:
 MINIMUM 1/4" JOINT
 BEAD OF BONDAFLEX 199 SEALANT
 CAULKING TO BE TOOLED AND MUST
 BE BACK FROM FACE OF PANEL
 BACKER ROD

FLASHING:
 24 GA. PREPAINTED FLASHING BENT
 SO ALL VISIBLE SIDES ARE PAINTED

SEALANT:
 BEAD OF BONDAFLEX 199
 SEALANT



Synstone[®]
**CONCRETE CLADDING
 SYSTEMS LTD.**
 2368 DUNWIN DRIVE T: 905.607.8304
 MISSISSAUGA, ON F: 905.492.2033
 L5L 1J9 W: WWW.SYNSTONE.COM

PROJECT: TYPICAL FACE FASTENED DETAILS 2-3/8" SYNSTONE THERMOSHIELD SEALED SYSTEM		SCALE: N.T.S.
DRAWING TITLE: FOUNDATION DETAIL		DRAWING NO.:
DATE: 03/01/2011	DRAWN BY: BRYANT HALLIDAY	WS20
JOB No.:	REVISION No.:	

CONSTRUCTION SCREWS:

3/16" X 4" FLAT HEAD COLOUR
MATCHED CONCRETE SCREW @ 24"
O.C. MAXIMUM SPACING

SEALANT:

MINIMUM 1/4" JOINT
WEEPING HOLES @ 48" O.C
BEAD OF BONDAFLEX 199 SEALANT
CAULKING TO BE TOOLED AND MUST
BE BACK FROM FACE OF PANEL
BACKER ROD

FLASHING:

24 GA. PREPAINTED FLASHING BENT
SO ALL VISIBLE SIDES ARE PAINTED

SEALANT:

BEAD OF BONDAFLEX 199
SEALANT

WINDOW SILL:

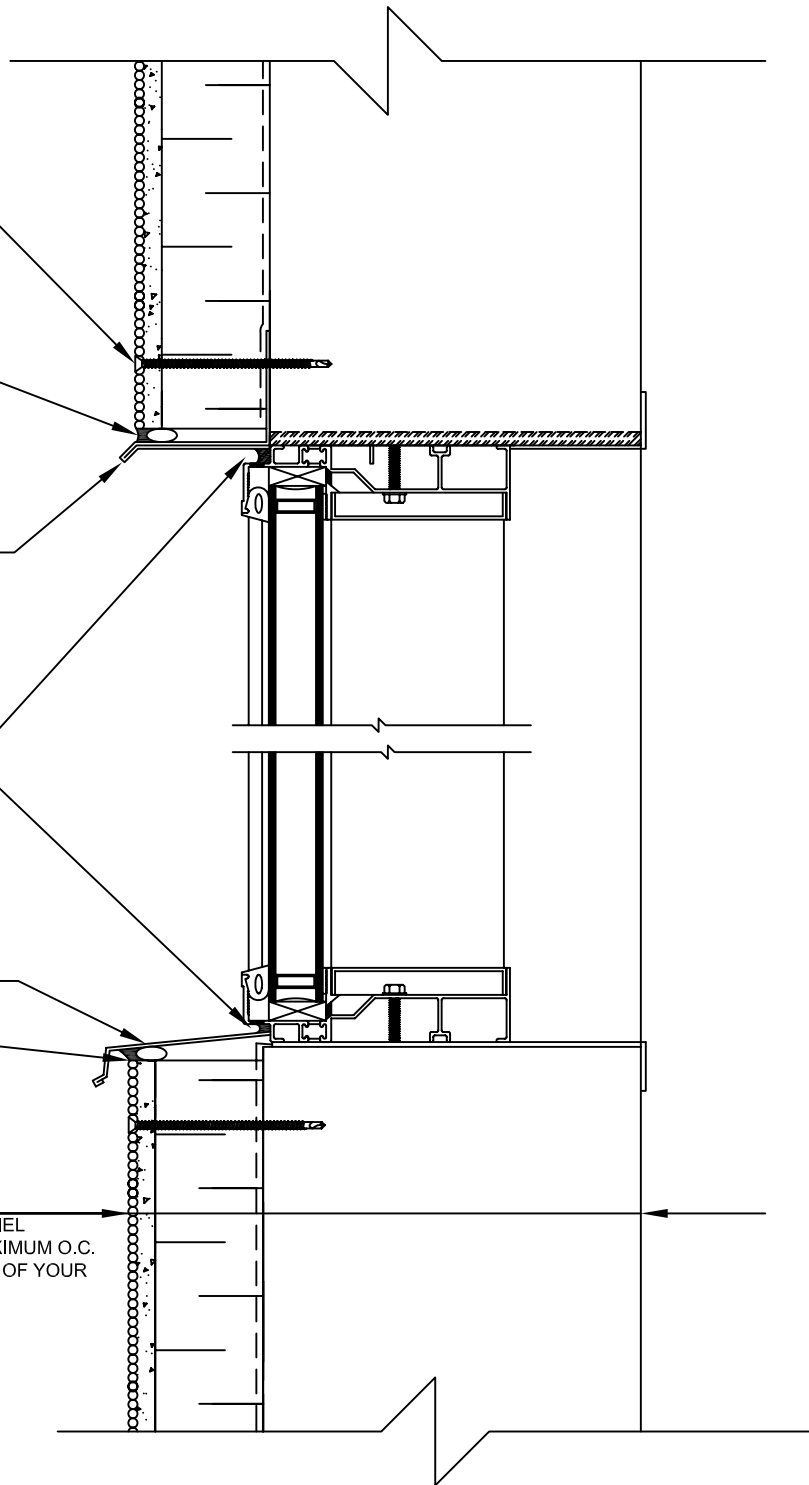
ALUMINUM BY OTHERS

SEALANT:

MINIMUM 1/4" JOINT
WEEPING HOLES @ 48" O.C
BEAD OF BONDAFLEX 199 SEALANT
CAULKING TO BE TOOLED AND MUST
BE BACK FROM FACE OF PANEL
BACKER ROD

TYPICAL WALL CONSTRUCTION:

2-3/8" SYNSTONE THERMOSHIELD PANEL
SECURED TO SUBSTRATE @ 24" MAXIMUM O.C.
COMES WITH 2" OF RIGID INSULATION OF YOUR
CHOICE
AIR / VAPOUR BARRIER
CONCRETE BLOCK WALL



2368 DUNWIN DRIVE T: 905.607.8304
MISSISSAUGA, ON F: 905.492.2033
L5L 1J9 W: WWW.SYNSTONE.COM

PROJECT: TYPICAL FACE FASTENED DETAILS
2-3/8" SYNSTONE THERMOSHIELD SEALED SYSTEM

DRAWING TITLE: WINDOW HEAD & SILL DETAIL

DATE: 03/01/2011

JOB No.:

DRAWN BY: BRYANT HALLIDAY

REVISION No.:

SCALE: N.T.S.

DRAWING NO.:

WS21

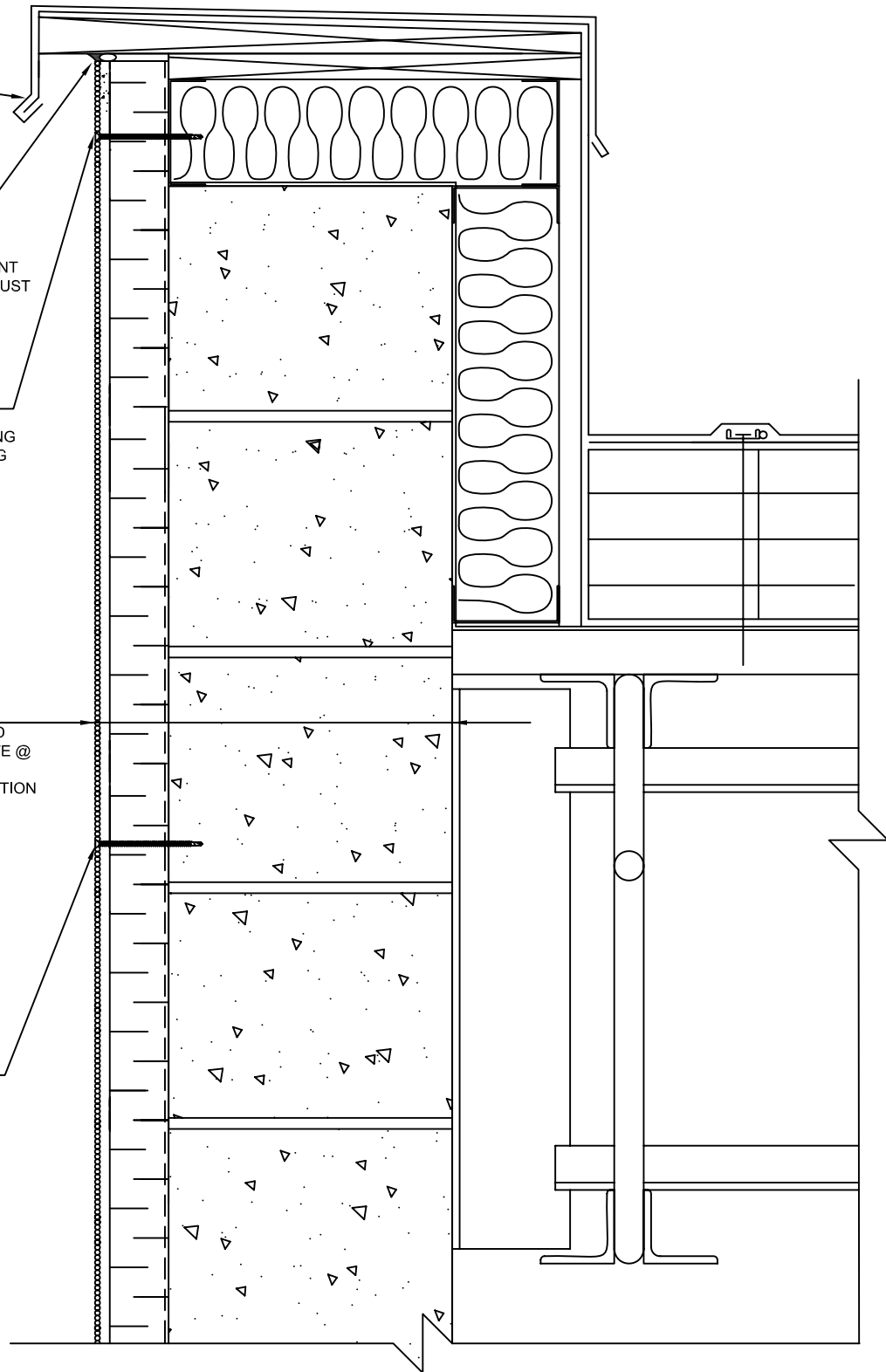
PARAPET FLASHING:
24 GA. PREPAINTED METAL
FLASHING BENT SO ALL
VISIBLE SIDES ARE PAINTED
BY OTHERS

SEALANT:
MINIMUM 1/4" JOINT
BEAD OF BONDAFLEX 199 SEALANT
CAULKING TO BE TOOLED AND MUST
BE BACK FROM FACE OF PANEL
BACKER ROD

CONSTRUCTION SCREWS:
#8 X 3" ROCK-ON PRE-PAINTED
COLOUR MATCHED SELF DRILLING
SCREW @ 18" O.C. MAX. SPACING
INTO VERTICAL STEEL STUD

TYPICAL WALL CONSTRUCTION:
2-3/8" SYNSTONE THERMOSHIELD
PANEL SECURED TO SUBSTRATE @
24" MAXIMUM O.C.
COMES WITH 2" OF RIGID INSULATION
OF YOUR CHOICE
AIR / VAPOUR BARRIER
CONCRETE BLOCK WALL

CONSTRUCTION SCREWS:
3/16" X 4" FLAT HEAD COLOUR
MATCHED CONCRETE SCREW
@ 24" O.C. MAXIMUM SPACING



**CONCRETE CLADDING
SYSTEMS LTD.**

2368 DUNWIN DRIVE T: 905.607.8304
MISSISSAUGA, ON F: 905.492.2033
L5L 1J9 W: WWW.SYNSTONE.COM

PROJECT: **TYPICAL FACE FASTENED DETAILS
2-3/8" SYNSTONE THERMOSHIELD SEALED SYSTEM**

DRAWING TITLE: **PARAPET DETAIL**

DATE: 03/01/2011

JOB No.:

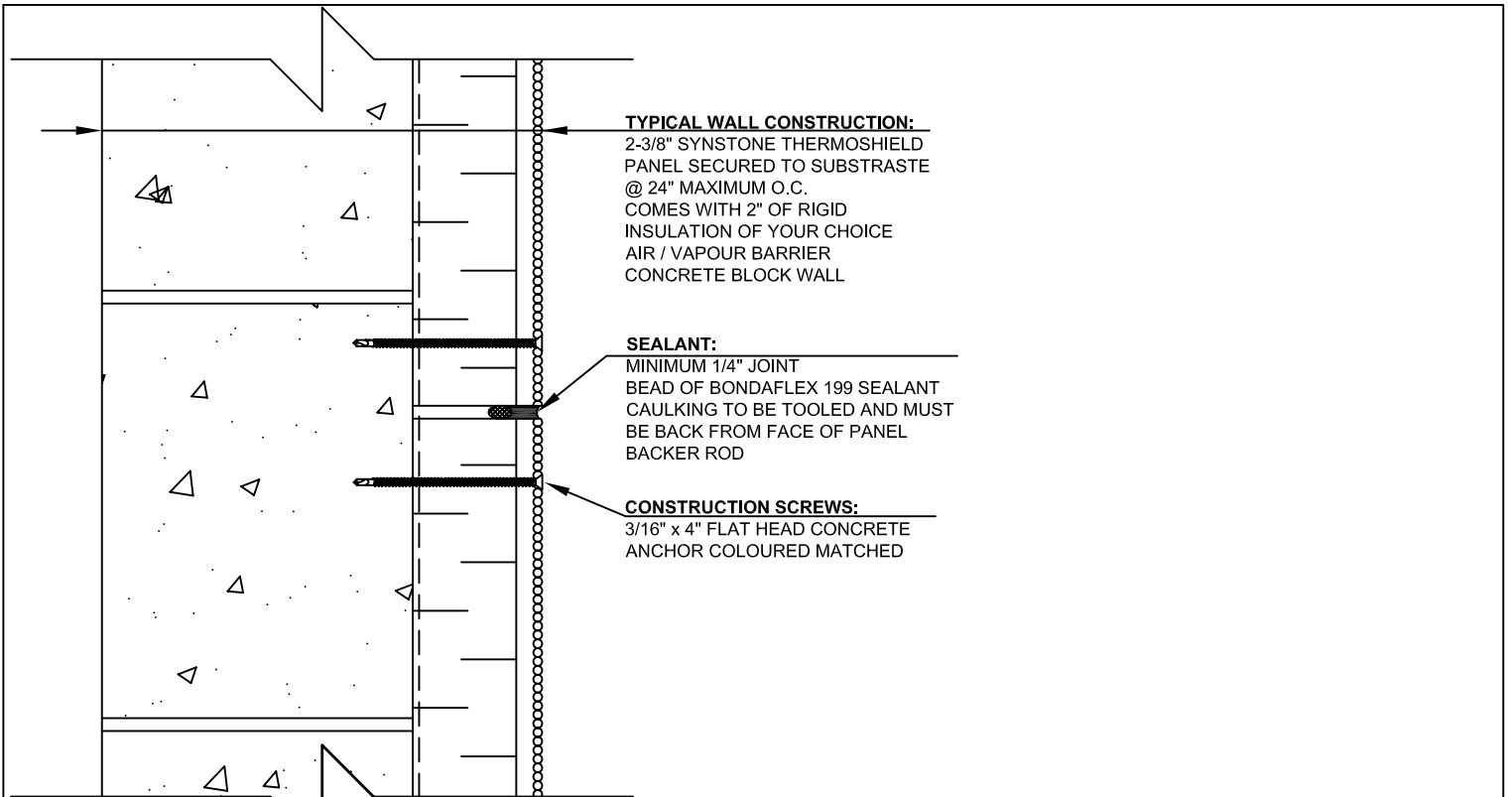
DRAWN BY: BRYANT HALLIDAY

REVISION No.:

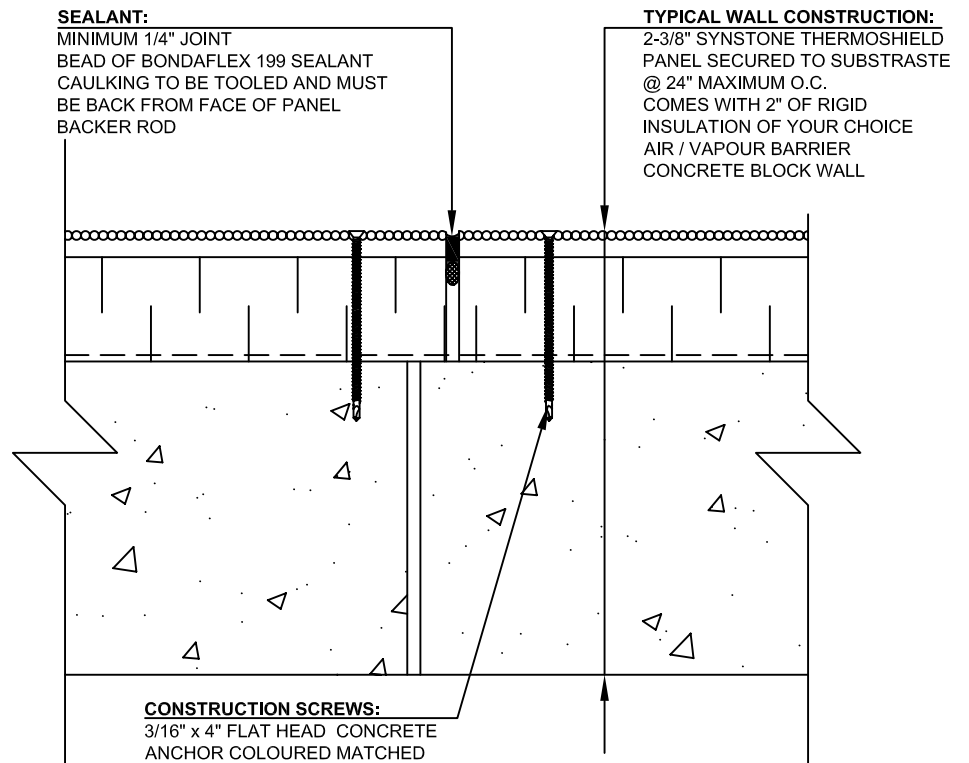
SCALE:
N.T.S.

DRAWING NO.:

WS22



HORIZONTAL JOINT



VERTICAL JOINT

Synstone[®]
**CONCRETE CLADDING
 SYSTEMS LTD.**
 2368 DUNWIN DRIVE T: 905.607.8304
 MISSISSAUGA, ON F: 905.492.2033
 L5L 1J9 W: WWW.SYNSTONE.COM

PROJECT: **TYPICAL FACE FASTENED DETAILS
 2-3/8" SYNSTONE THERMOSHIELD SEALED SYSTEM**

SCALE:
N.T.S.

DRAWING TITLE:
HORIZONTAL AND VERTICAL JOINT DETAIL

DRAWING NO.:

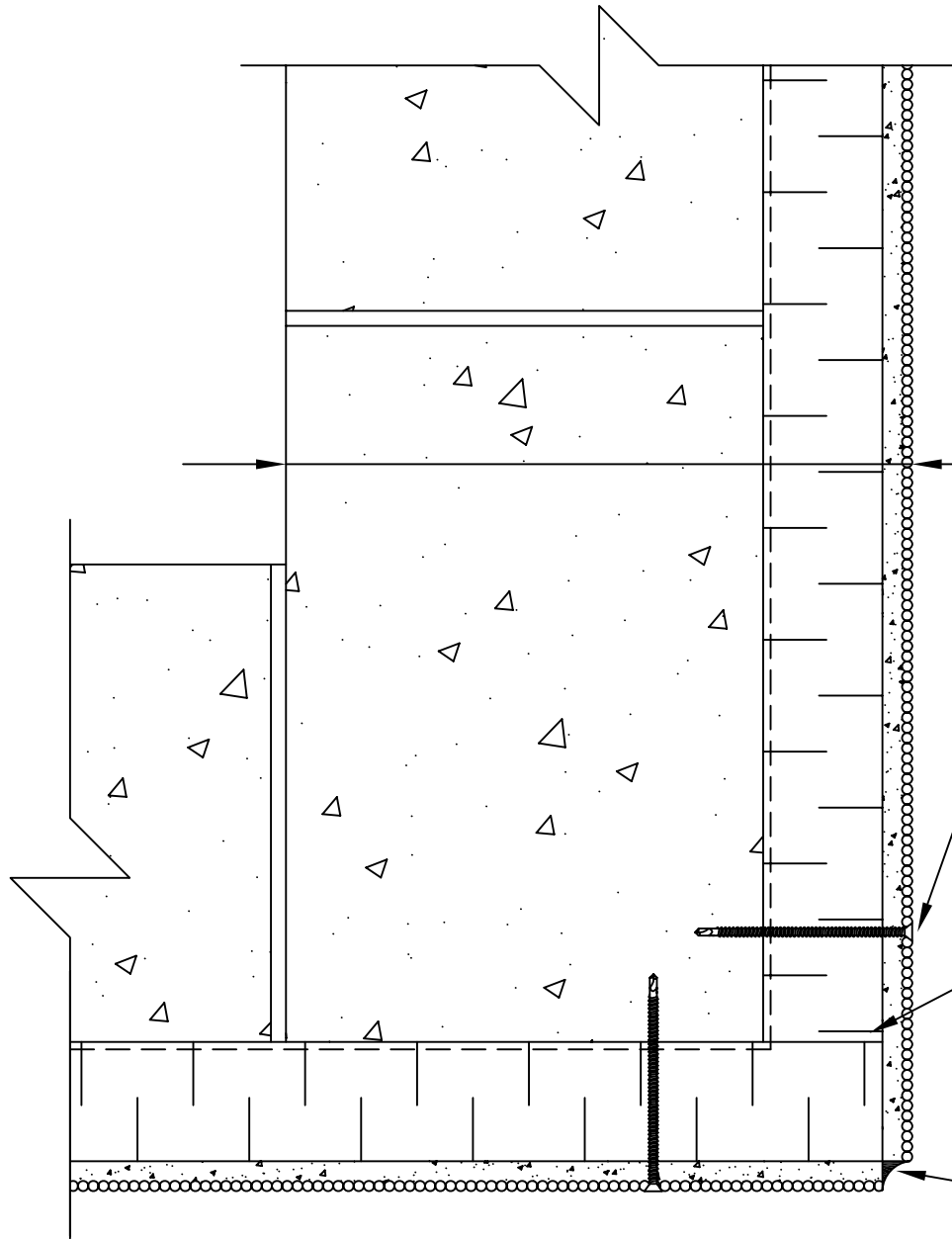
DATE: **03/01/2011**

DRAWN BY: **BRYANT HALLIDAY**

JOB No.:

REVISION No.:

WS23



TYPICAL WALL CONSTRUCTION:
 2-3/8" SYNSTONE THERMOSHIELD
 PANEL SECURED TO SUBSTRATE
 @ 24" MAXIMUM O.C.
 COMES WITH 2" OF RIGID
 INSULATION OF YOUR CHOICE
 AIR / VAPOUR BARRIER
 CONCRETE BLOCK WALL

CONSTRUCTION SCREWS:
 3/16" x 4" FLAT HEAD CONCRETE
 ANCHOR COLOURED MATCHED

SITE CUT:
 REMOVE A 2" STRIP OF RIGID
 INSULATION FROM ONE PANEL TO
 FIT CORNER AS SHOWN

SEALANT:
 BUTT GFRC AT BACK
 BEAD OF BONDAFLEX 199 SEALANT
 CAULKING TO BE TOOLED AND
 MUST BE BACK FROM FACE OF
 PANEL

Synstone[®]
**CONCRETE CLADDING
 SYSTEMS LTD.**

2368 DUNWIN DRIVE T: 905.607.8304
 MISSISSAUGA, ON F: 905.492.2033
 L5L 1J9 W: WWW.SYNSTONE.COM

PROJECT: **TYPICAL FACE FASTENED DETAILS
 2-3/8" SYNSTONE THERMOSHIELD SEALED SYSTEM**

DRAWING TITLE: **OUTSIDE CORNER DETAIL**

DATE: 03/01/2011

DRAWN BY: BRYANT HALLIDAY

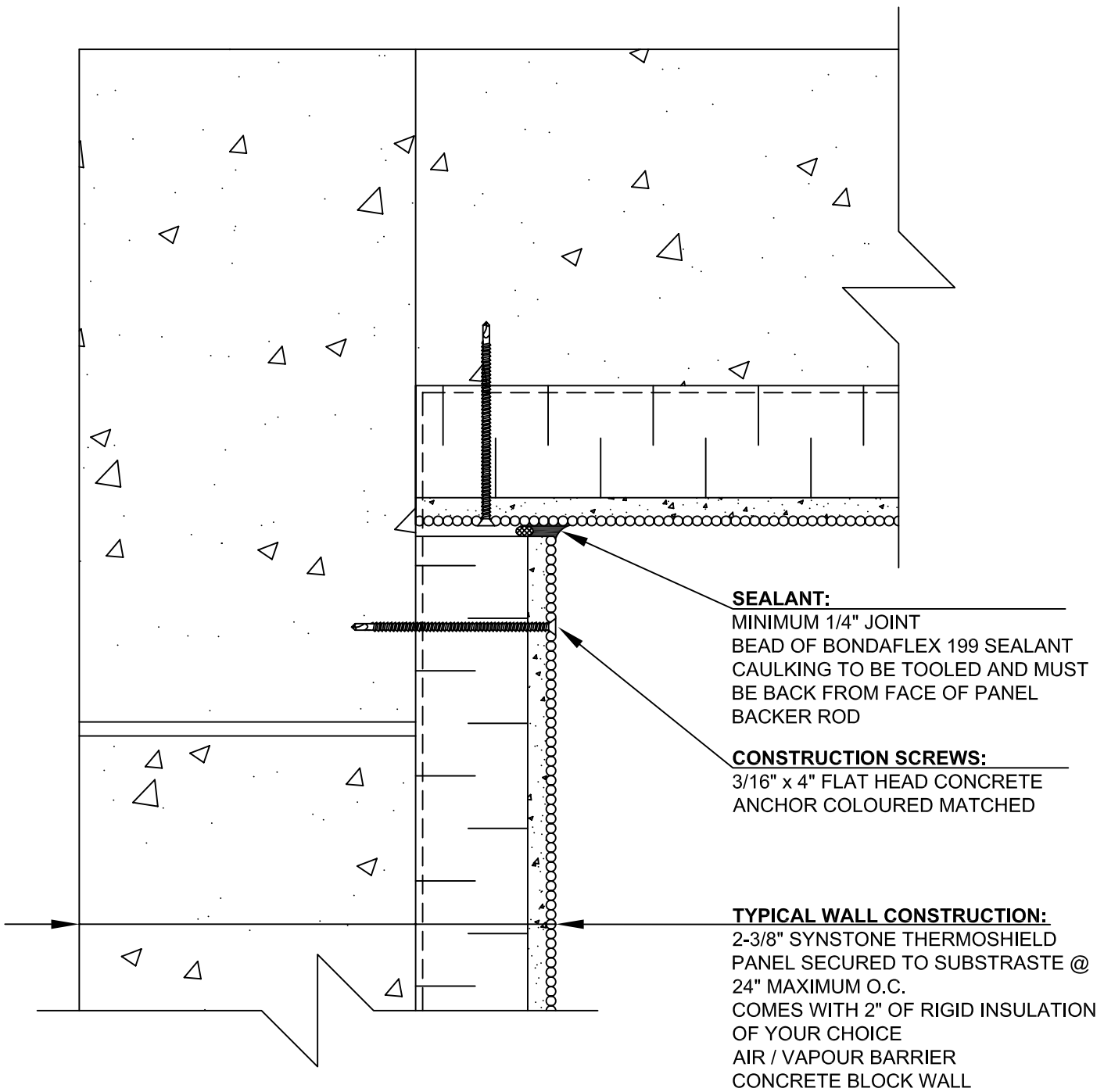
JOB No.:

REVISION No.:

SCALE: **N.T.S.**

DRAWING NO.:

WS24



SEALANT:
 MINIMUM 1/4" JOINT
 BEAD OF BONDAFLEX 199 SEALANT
 CAULKING TO BE TOOLED AND MUST
 BE BACK FROM FACE OF PANEL
 BACKER ROD

CONSTRUCTION SCREWS:
 3/16" x 4" FLAT HEAD CONCRETE
 ANCHOR COLOURED MATCHED

TYPICAL WALL CONSTRUCTION:
 2-3/8" SYNSTONE THERMOSHIELD
 PANEL SECURED TO SUBSTRATE @
 24" MAXIMUM O.C.
 COMES WITH 2" OF RIGID INSULATION
 OF YOUR CHOICE
 AIR / VAPOUR BARRIER
 CONCRETE BLOCK WALL

Synstone[®]
**CONCRETE CLADDING
 SYSTEMS LTD.**
 2368 DUNWIN DRIVE T: 905.607.8304
 MISSISSAUGA, ON F: 905.492.2033
 L5L 1J9 W: WWW.SYNSTONE.COM

PROJECT: TYPICAL FACE FASTENED DETAILS		SCALE: N.T.S.
2-3/8" SYNSTONE THERMOSHIELD SEALED SYSTEM		
DRAWING TITLE: INSIDE CORNER DETAIL		
DATE: 03/01/2011	DRAWN BY: BRYANT HALLIDAY	
JOB No.:	REVISION No.:	

WS25

CONSTRUCTION SCREWS:
 #8 x 3-1/2" PRE-PAINTED COLOUR
 MATCHED WOOD SCREW @ 18" O.C. MAX.
 SPACING INTO 1/2" PLYWOOD

TYPICAL WALL CONSTRUCTION:
 2-3/8" SYNSTONE THERMOSHIELD PANEL
 SECURED TO SUBSTRATE @ 24" MAXIMUM O.C.
 COMES WITH 2" OF RIGID INSULATION OF YOUR
 CHOICE
 AIR / VAPOUR BARRIER
 1/2" PLYWOOD
 STEEL WALL ASSEMBLY

SEALANT:
 MINIMUM 1/4" JOINT
 WEeping HOLES @ 48" O.C.
 BEAD OF BONDAPLEX 199 SEALANT
 CAULKING TO BE TOOLED AND MUST
 BE BACK FROM FACE OF PANEL
 BACKER ROD

SITE CUT:
 REMOVE A 2-3/8" STRIP OF RIGID
 INSULATION FROM THE 1-3/8"
 THERMOSHIELD PANEL TO FIT
 CORNER AS SHOWN

CONSTRUCTION SCREW:
 #8 x 2" ROCK-ON PRE-PAINTED
 COLOUR MATCHED SELF DRILLING
 SCREW @ 16" O.C. MAX. SPACING
 INTO 1-1/2" x 2" x 1-1/2" 18 GAUGE
 Z BARS

SOFFIT CONSTRUCTION:
 1-1/4" SYNSTONE THERMOSHIELD PANEL
 1-1/2" x 2" x 1-1/2" 18 GAUGE Z BAR
 2" RIGID INSULATION
 AIR/VAPOUR BARRIER
 1/2" PLYWOOD
 STEEL ASSEMBLY



2368 DUNWIN DRIVE T: 905.607.8304
 MISSISSAUGA, ON F: 905.492.2033
 L5L 1J9 W: WWW.SYNSTONE.COM

PROJECT: **TYPICAL FACE FASTENED DETAILS
 2-3/8" SYNSTONE THERMOSHIELD SEALED SYSTEM**

DRAWING TITLE: **SOFFIT DETAIL**

DATE: 03/01/2011

JOB No.:

DRAWN BY: BRYANT HALLIDAY

REVISION No.:

SCALE: **N.T.S.**

DRAWING NO.:

WS26

TYPICAL WALL CONSTRUCTION:

2-3/8" SYNSTONE THERMOSHIELD
 PANEL SECURED TO SUBSTRATE
 @ 24" MAXIMUM O.C.
 COMES WITH 2" OF RIGID
 INSULATION OF YOUR CHOICE
 AIR / VAPOUR BARRIER
 CONCRETE BLOCK WALL

CONSTRUCTION SCREWS:

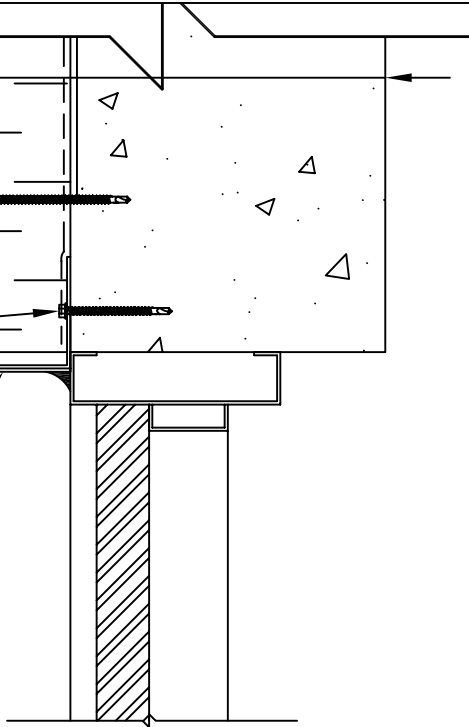
3/16" x 4" FLAT HEAD CONCRETE
 ANCHOR COLOURED MATCHED
 3/16" DRILLCRETE CONCRETE
 ANCHOR

SEALANT:

MINIMUM 1/4" JOINT
 WEEPING HOLES @ 48" O.C.
 BEAD OF BONDAFLEX 199 SEALANT
 CAULKING TO BE TOOLED AND MUST
 BE BACK FROM FACE OF PANEL
 BACKER ROD

HEAD FLASHING:

24 GA. PREPAINTED STEEL FLASHING
 BENT SO ALL VISIBLE SIDES ARE
 PAINTED



DOOR HEAD

JAMB FLASHING:

24 GA. PREPAINTED STEEL FLASHING
 BENT SO ALL VISIBLE SIDES ARE
 PAINTED

SEALANT:

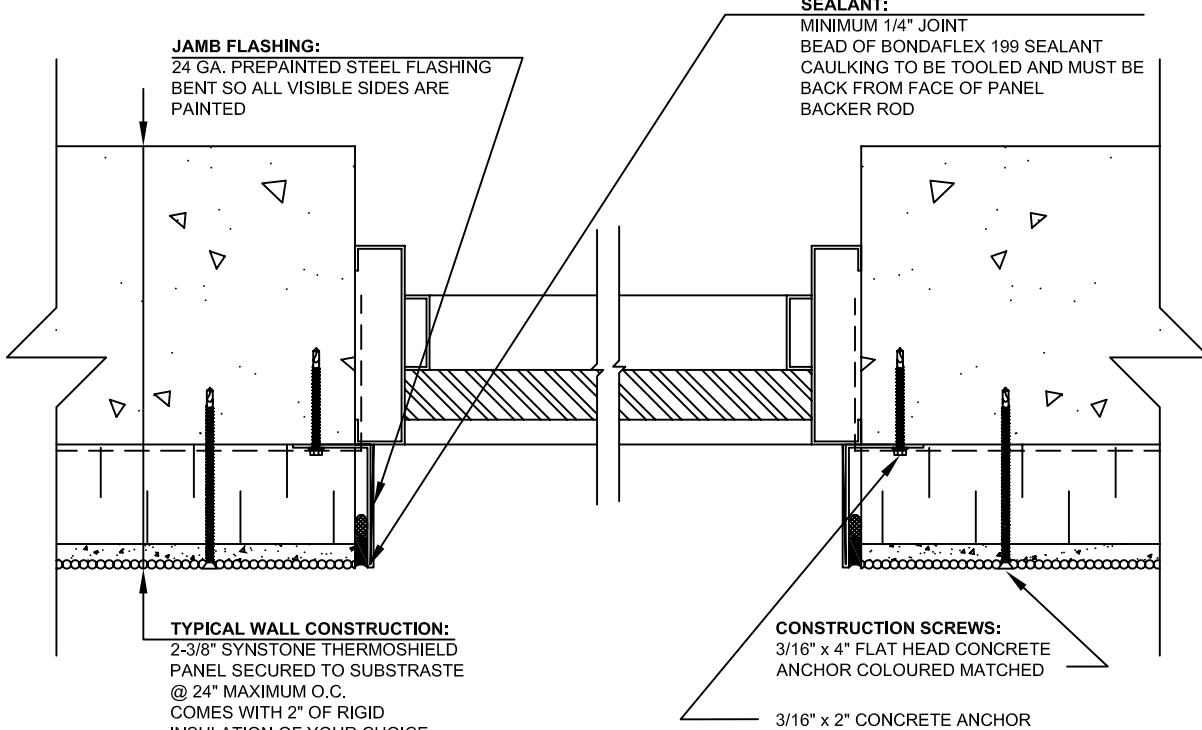
MINIMUM 1/4" JOINT
 BEAD OF BONDAFLEX 199 SEALANT
 CAULKING TO BE TOOLED AND MUST BE
 BACK FROM FACE OF PANEL
 BACKER ROD

TYPICAL WALL CONSTRUCTION:

2-3/8" SYNSTONE THERMOSHIELD
 PANEL SECURED TO SUBSTRATE
 @ 24" MAXIMUM O.C.
 COMES WITH 2" OF RIGID
 INSULATION OF YOUR CHOICE
 AIR / VAPOUR BARRIER
 CONCRETE BLOCK WALL

CONSTRUCTION SCREWS:

3/16" x 4" FLAT HEAD CONCRETE
 ANCHOR COLOURED MATCHED
 3/16" x 2" CONCRETE ANCHOR



DOOR JAMB



**CONCRETE CLADDING
 SYSTEMS LTD.**

2368 DUNWIN DRIVE T: 905.607.8304
 MISSISSAUGA, ON F: 905.492.2033
 L5L 1J9 W: WWW.SYNSTONE.COM

PROJECT: **TYPICAL FACE FASTENED DETAILS
 2-3/8" SYNSTONE THERMOSHIELD SEALED SYSTEM**

DRAWING TITLE: **DOOR HEAD & JAMB DETAIL**

DATE: 03/01/2011

JOB No.:

DRAWN BY: BRYANT HALLIDAY

REVISION No.:

SCALE: **N.T.S.**

DRAWING NO.:

WS27