



Cleaning Directions

FOR ALL OUTDOOR CLEANING – Use 4 Ounces of ZymeAway Concentrate



Outdoor – All stone, patios, marble, and brick surfaces



Mold & mildew on vinyl, wood, aluminum surfaces



Cleaning wood, decks, siding, and other washable surfaces



Hot tubs and spa cleaning and other washable surfaces

Mix 4 ounces of ZymeAway concentrate into 1-gallon of water. Pour this mixture into a sprayer and spray mixture over mold, mildew, or other organic dirt and debris. Use a long handled brush (soft to medium bristle) and brush mixture into the surface and allow it to penetrate into the debris for up to 5-minutes. Next, thoroughly rinse away all mixture, dirt or debris from the surface with clean water and allow to air dry. Repeat this cleaning method where or as necessary. **NOTE:** Mold “stains” are NOT mold, but the liquid molds deposit into the surface to break-down its food. Mold is always cleaned away thoroughly and completely the first time you wash using this cleaning method. Mold stains may require a mixture of baking soda and ZymeAway and then brushing this mixture into the stains. All outdoor washable surfaces will respond favorably when cleaned with our enzyme liquid energy product... ZymeAway!

FOR ALL INDOOR CLEANING – Use 2 Ounces of ZymeAway Concentrate



All kitchen surfaces, appliances, and flooring



All bathroom surfaces, fixtures, and tile & grout



All fabrics, furniture, and carpeting (stains & odors)



Bedroom linens, bedding, and all other washable surfaces

Mix 2 ounces of ZymeAway concentrate into 1-gallon of water. Pour this mixture into a handy spray bottle and clean surfaces in the following manner.

1. Dilute 2-ounces of ZymeAway concentrate into 1-gallon of water. Spray over any washable surface where fats, oils, greases or other organic debris may be present.
2. Brush or agitate mixture into the soiled surface to insure that all matter is covered.
3. Allow mixture to penetrate for 3 to 5 minutes.
4. Rinse away with clean water and sponge or cloth.

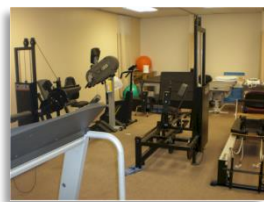
NOTE: For difficult dirt or food residue, mix some baking soda with ZymeAway (2-ounce mixture) into a paste like substance and brush into the soiled or dirty surface. Spray mixture over surface a second time and allow it to penetrate into the debris using a sponge or brush. Rinse clean as stated above.

REMEMBER: There are many additional cleaning surfaces, methods and approaches you can clean with ZymeAway. We have hospitals, veterinary clinics, nursing homes, restaurants, theaters, universities and retailers that use ZymeAway for cleaning all organic matter. Pet accidents (feces, vomit and urine) are prime examples of the effectiveness our product provides in breaking down these forms of organic matter. Following are additional uses.

SPECIALIZED CLEANING – Use 2 Ounces of ZymeAway Concentrate



Hospitals, clinics and dental centers and offices



Physical therapy and fitness centers



Nursing homes and wellness centers



Veterinary clinics and animal rescue centers

In all cleaning situations, you will know if 2-ounces or 4-ounces will work best. Two-ounces is considered general purpose and the 4-ounce mixture is considered professional strength.

MOLD & FLOOD WATER CLEANING: You will use 4-ounces per gallon of water whenever you clean a surface with mold, mildew, flood water debris (bacteria or other protein matter), heavy deposits of fats, oils, grease or other long-term organic residual staining and odors... such as pet urine stains.

We have found 2-ounces per gallon of water to work with all general indoor cleaning except for heavy deposits of mold, mildew or any flood water clean-up work.

Mirrors, Metal Frames, Windows, Stainless Steel and Laundry (Stains):



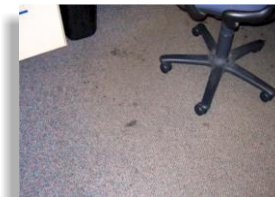
Indoor mirrors, glass frames and windows



Stainless Steel Appliances



Laundry



Fabric Stains

Mirrors, metal & glass frames and windows: Use ½ ounce of concentrate into 1-gallon of water. This mixture will leave a clean and streak free surface. Spray on, rub into surface, allow to penetrate and rinse clean.

Stainless steel appliances: Use ½ ounce of concentrate into 1-gallon of water. This mixture will leave a clean and streak free surface. Spray on, rub into surface, allow to penetrate and rinse clean.

Laundry: Use 2-ounces of concentrate into 1-gallon of water. From this 1-gallon mixture, take a “CUP” and pour this into your laundry machine – you do not need any detergents or chemicals.

Fabric Stains: Use 2-ounces of concentrate into 1-gallon of water. Pour this mixture into quart or other spray bottles. Spray the stain thoroughly and rub wet stained fabric between your hands and spray again. Do this 2 or 3 times. Allow the enzymes to work into the stain for an hour or so. Next, place item into the laundry and follow the laundry directions above.

Skunk Spray: Mix 2-ounces of ZymeAway concentrate into 1-gallon of water. Pour this mixture into a handy spray bottle and spray the “skunk sprayed surface” thoroughly. If on a pet, spray several times to soak the fur and brush or comb the mixture into the fur. Allow it to penetrate the surface or the fur and skin for 5-minutes and thoroughly rinse in tepid water.

Cat Urine: Mix 2-ounces of ZymeAway concentrate into 1-gallon of water. Pour this mixture into a handy spray bottle and spray the urine stained area thoroughly – “liberally spray the surface” to allow the enzymes to reach the floor surface. If you can agitate the surface do so to help get the enzymes into the fabric fibers. You may need to repeat this a couple time depending on how long the urine has dried. The odors will disipate and the stain will break-down and dissolve over time.

Visit our website ZymeAway.com for more answers to common cleaning questions.