

Prefabricated Control Rooms,
Guard Shacks, Toll Booths
Retrofit Containers and Other
Industrial Items



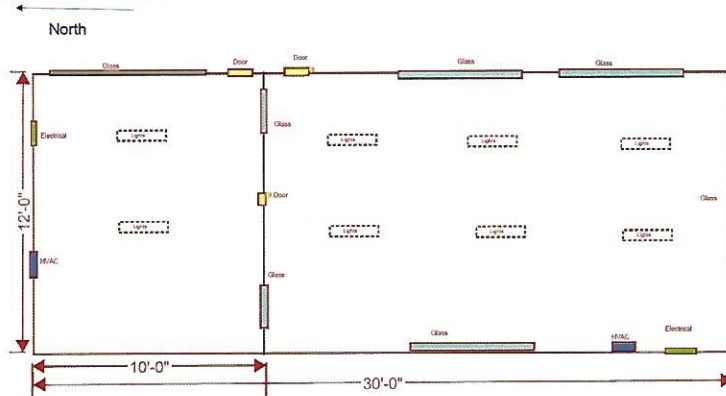
Edwards Industrial Rooms, LLC

Office 850-223-1064 Cell 850-843-3323



Our Control Rooms are custom designed to fit the needs of your facility. Our Team can manufacture, deliver or install anywhere in the USA. Our modules are made of High Quality 3 inch Foam insulated walls, HVAC Units and LED Lighting to assure maximum safety, efficiency and productivity .

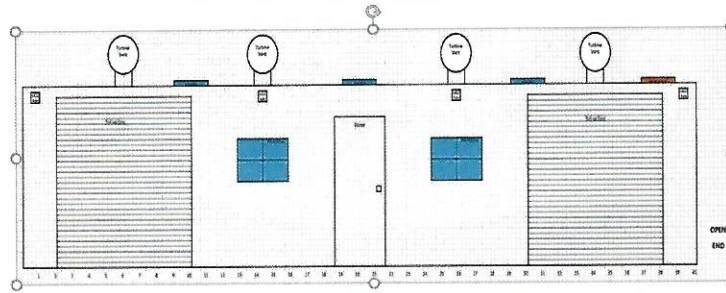
Control Rooms and Plant Production offices



Call 1-850-223-1064 for a free quote

Made in the
USA

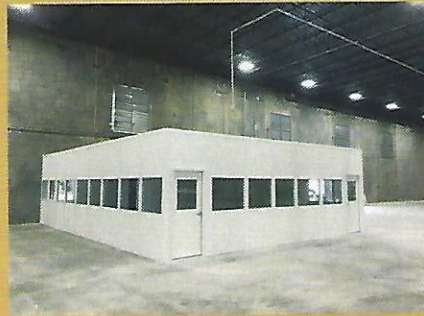
Edwards Industrial Rooms, LLC
Retrofitting Conex / Shipping
Container's for US Military, Medical,
FEMA & the United Nations



**Safety is Priority ONE in every
Manufacturing Plant and
Petrochemical facility around to
world. Our Industrial Rooms are
built for inside and outside
applications, being specifically
designed to Keep Your People
and Equipment out of the
Weather, Saving you Time and
Money.**

visit www.edwardsdsindustrialrooms.com

Our Plant enclosures,
include Turn Key
Installations, LED Lights,
Room Divider Partitions,
Protective/Rubberized
Flooring, HVAC Units,



Day	Hours
Monday	9:00am - 5:00pm
Tuesday	9:00am - 5:00pm
Wednesday	9:00am - 5:00pm
Thursday	9:00am - 5:00pm
Friday	9:00am - 5:00pm
Saturday	Closed
Sunday	Closed

Call 1-850-223-1064 for a Free Quote or to visit our web site and schedule a site visit

We want and need your business

Customers are important - Relationships are essential for success

Edwards Industrial Rooms, LLC a
4053 South Byron Butler Pkwy
Perry FL 32348
Visit our website- www.edwardsindustrialrooms.com

Office Phone- 850-223-1064 or 850-223-1066
Contact Bobby Edwards / CEO
Cell 850-843-3323
email: bobby@edwardsindustrialrooms.com
Associate Members of the following Associations

SLMA
Southeastern Lumber Manufacturer's Association



Texas Lumberman's Association

Woman Owned Small Business

NELMA
Northeastern Lumber Manufacturers Association



MLMA

Mississippi Lumber Manufacturer's Association