



StudLiner[®]
CONCRETE PROTECTION

THE NUMBER ONE CHOICE FOR CONCRETE PROTECTION

Solmax's StudLiner® is the number one choice for concrete protection. It is a high-density polyethylene (HDPE) geomembrane with studs on one side that lock the liner into the surface to prolong the life of the concrete. Each square meter contains over 1,200 studs, creating a product with exceptional pull-out strength and high resistance to mechanical, chemical and environmental threats.

StudLiner® BENEFITS



- Highest liner pull-out strength available from any thermoplastic concrete protective system.
- Minimal lateral movement of the liner system due to thermal expansion and contraction.
- Excellent protection against mechanical damage and chemical attack.
- Outstanding resistance to UV degradation.
- Welding technology provides the highest reliability, repeatability and strength in the industry.
- Economic alternative to other concrete protection systems.
- Prefabricated panels available to any project-specific dimensions or geometric shapes.

VERSATILITY

StudLiner® can be supplied in either sheet form or pre-fabricated pieces and can be installed over an exposed surface of a new or existing concrete structure, in a wide range of industrial, municipal and civil applications. It is an economical alternative to other concrete protection systems.



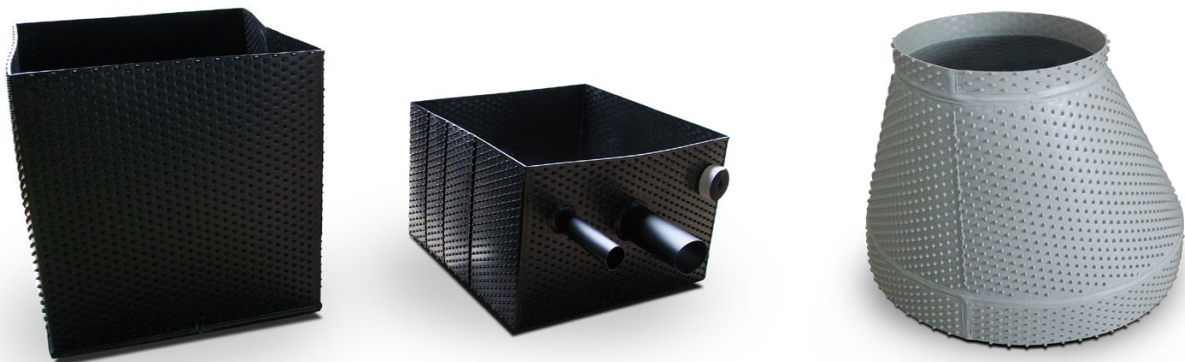
StudLiner® PROPERTIES



- Thermoplastic embedment sheet manufactured with high-density polyethylene (HDPE).
- Studs are extruded during the sheet extrusion process and are an integral part of the sheet.
- Available in 2.0 mm to 5.0 mm with either a black or grey pigment.
- Available in either roll form or pre-fabricated panels. Standard roll dimensions are 8.0 feet in width and up to 246 feet in length depending on the selected product thickness.

| EXPOSURE | PERFORMANCE |
|------------------------------------|--|
| Maximum Temperature | 160°F |
| Acid Resistance | Excellent |
| Alkali Resistance | Excellent |
| Chlorinated Hydrocarbon Resistance | Good |
| Aromatic Hydrocarbon Resistance | Good |
| Aliphatic Hydrocarbon Resistance | Excellent |
| Plasticizer Requirement | None |
| Filter Requirement | None |
| Crosslinking Due to UV | None |
| Molecular Structure | Contains only carbon-carbon & carbon-hydrogen bonds which create broad chemical resistance & long-term durability. |
| Seaming Strengths | >90% Efficiency |

PREFABRICATION OPTIONS



OUR LOCATIONS



Solmax is the world's largest geosynthetics manufacturer with plants in North America, Europe, Asia, and the Middle East. Used in critical applications in more than 60 countries by the biggest names in mining, petroleum, waste management, water, and civil engineering, our products contain and drain - creating a layer of protection between our most precious resource, the earth, and the waste and contaminants that result from human activity, industry, mining, and the use of fossil fuels. Our mission is to enable progress with minimal damage to the environment.

**AIM FOR THE SKY.
WE'VE GOT THE GROUND COVERED.**

SOLMAX.COM

Solmax is not a design professional and has not performed any design services to determine if Solmax's goods comply with any project plans or specifications, or with the application or use of Solmax's goods to any particular system, project, purpose, installation or specification.