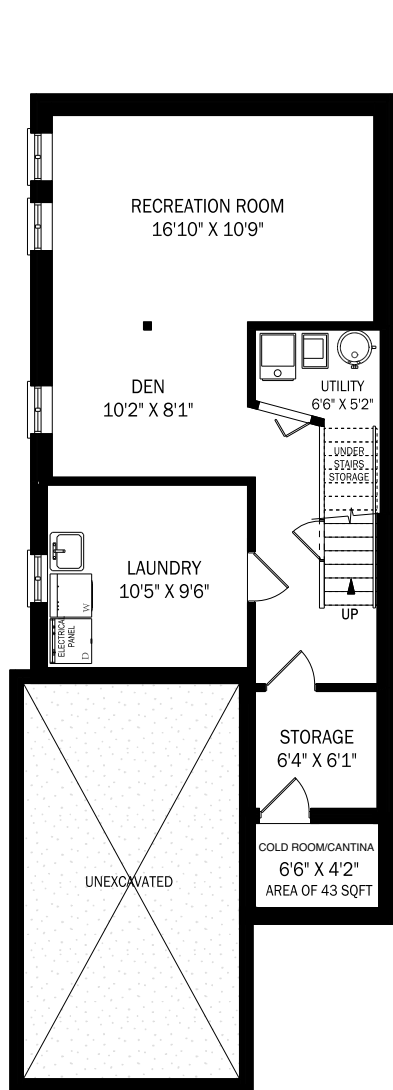
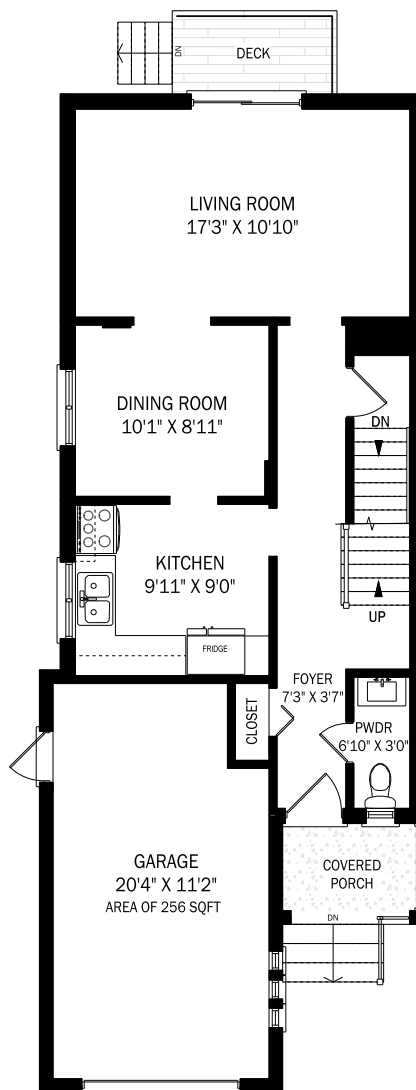
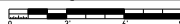


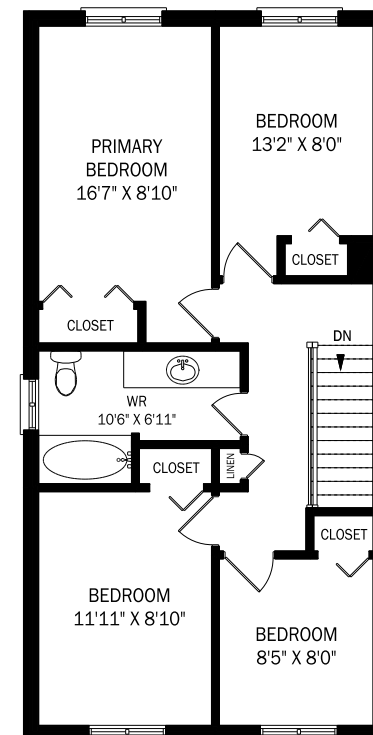
# 3 NINETEENTH STREET, ETOBICOKE



**LOWER LEVEL - 643 SQUARE FEET**



CEILING HEIGHT 8'1"  
**MAIN FLOOR - 652 SQUARE FEET**



CEILING HEIGHT 8'1"  
**SECOND FLOOR - 722 SQUARE FEET**

