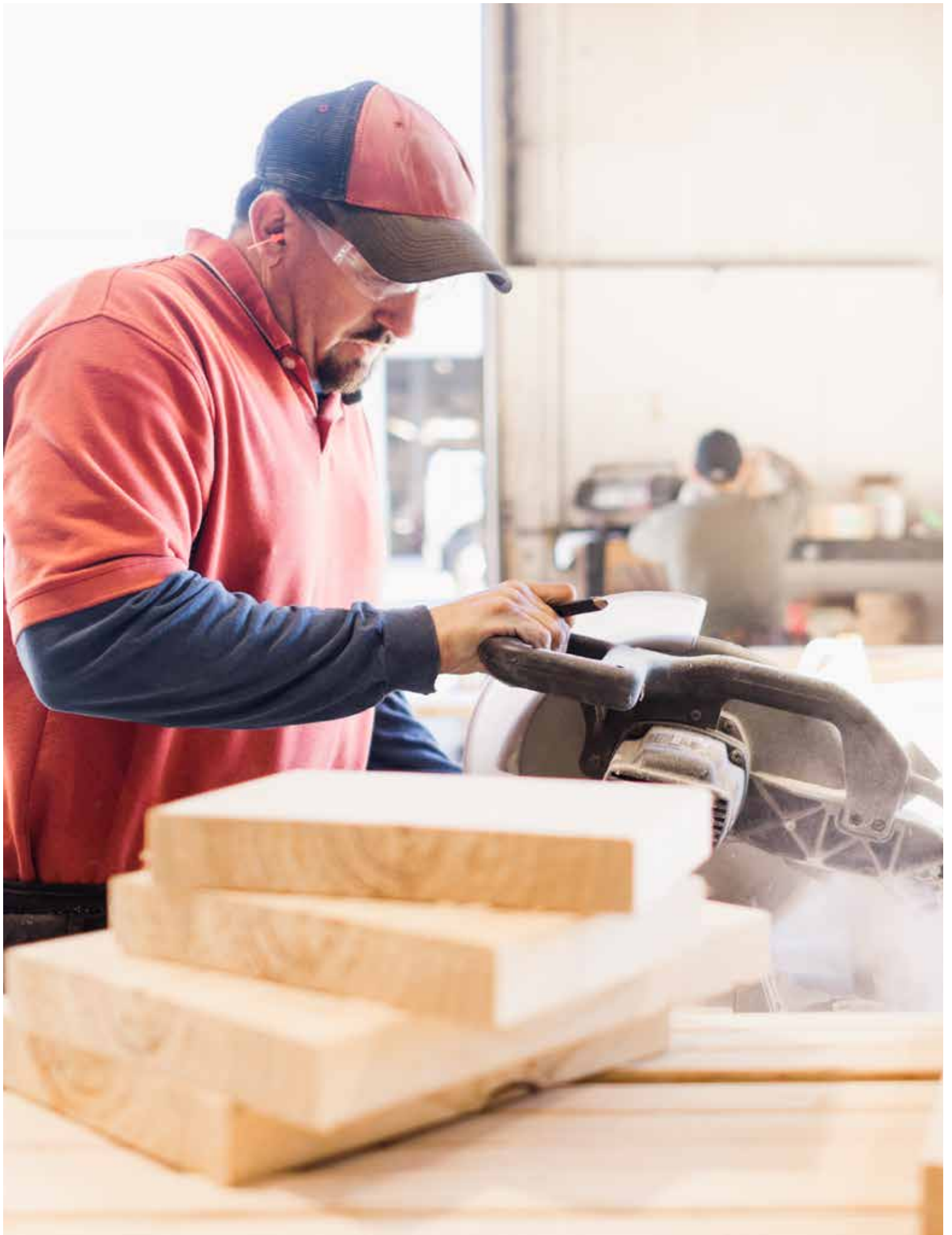


MODULAR



ATLANTIC[®]
HOMES



MADE FOR LIVING

A heritage of excellence.

Atlantic Homes has been providing families with quality homes for generations. With a unique combination of state-of-the-art manufacturing and high-quality building materials, we provide the highest value in housing. We have earned our reputation by consistently delivering more than our customers might expect. More innovative quality features. More home styles. More flexible floor plan designs. More helpful customer service. And, most of all, more home for the money.

For you. For life.

Beyond just building you a house, we're committed to providing you and your family with a home to make memories in that will last a lifetime. Somewhere you can feel secure. A place you can call your own. A home that fits your lifestyle and has your own personal touch. Whether you're an active young family constantly on the go or empty-nesters ready to simplify, just relax – we have a home that's right for you.

Lifestyle. Choice.

Our vast selection of floor plans and color options give you the freedom to express your personal style and fit your home around your life. Using our online Kitchen Designer, it's easy to create the kitchen of your dreams.

2748-01

PINE VIEW

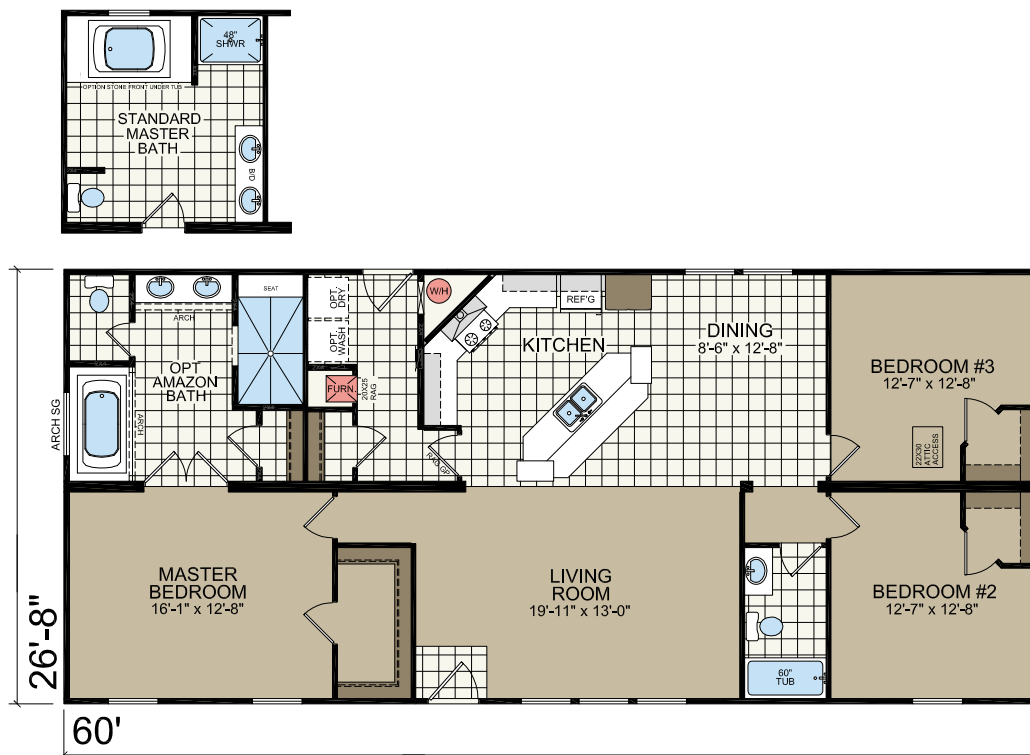
28' x 48'
3 bed-2 bath
1280 sq. ft.



2860-06

GARDEN COTTAGE

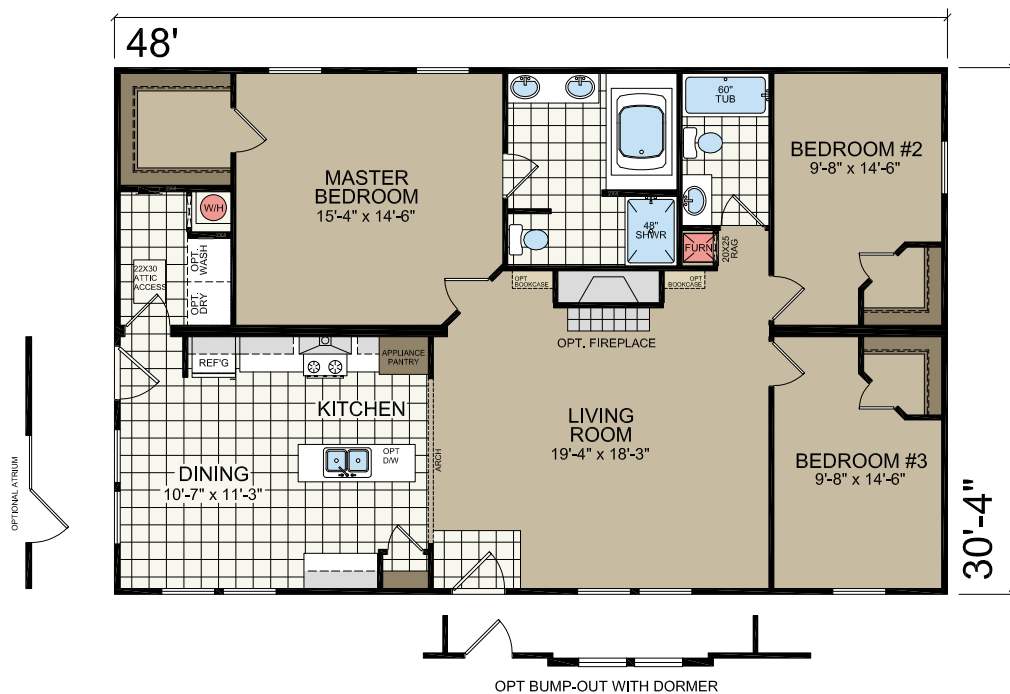
28' x 60'
3 bed-2 bath
1600 sq. ft.



3248-02

CORNER COTTAGE

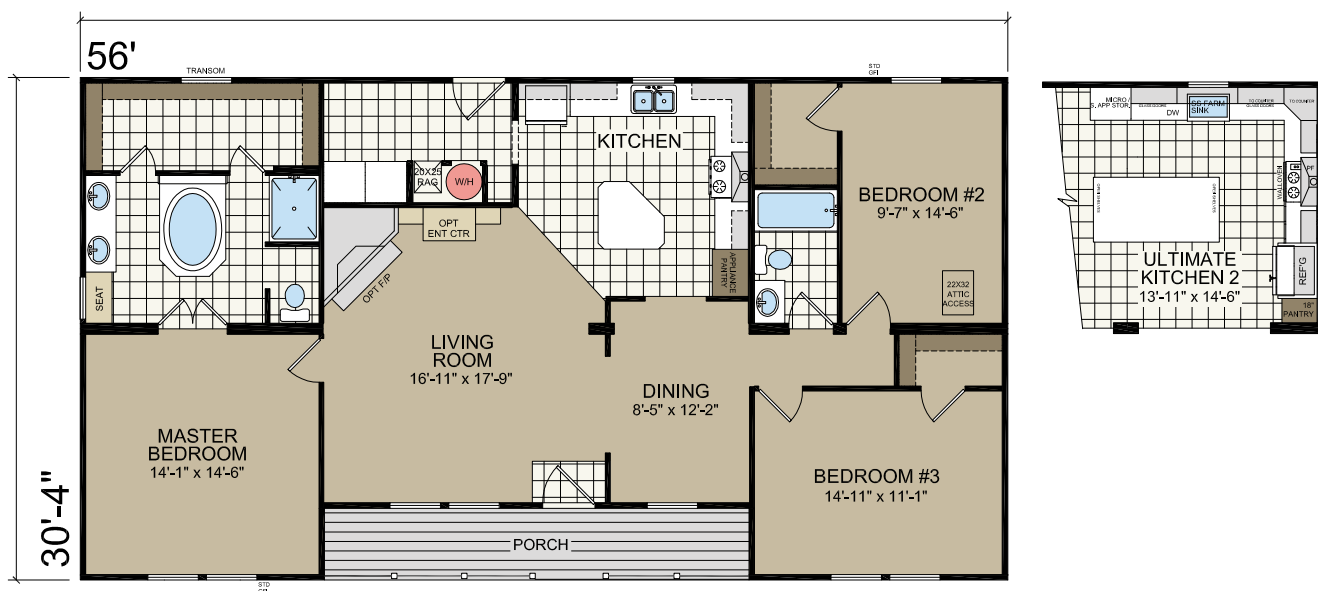
32' x 48'
3 bed-2 bath
1455 sq. ft.



3256

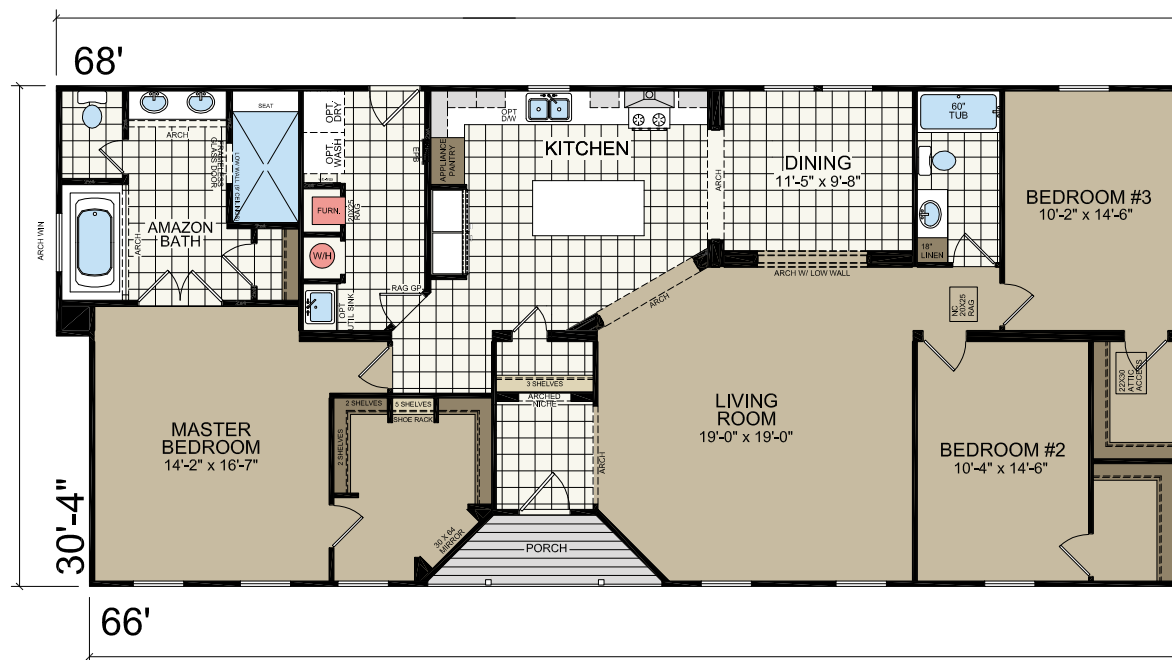
WACCAMAW

32' x 56'
3 bed-2 bath
1698 sq. ft.



3266-01
ARCHDALE

32' x 68'
3 bed-2 bath
1986 sq. ft.



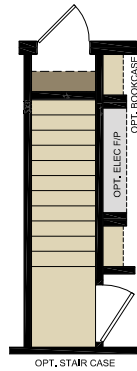
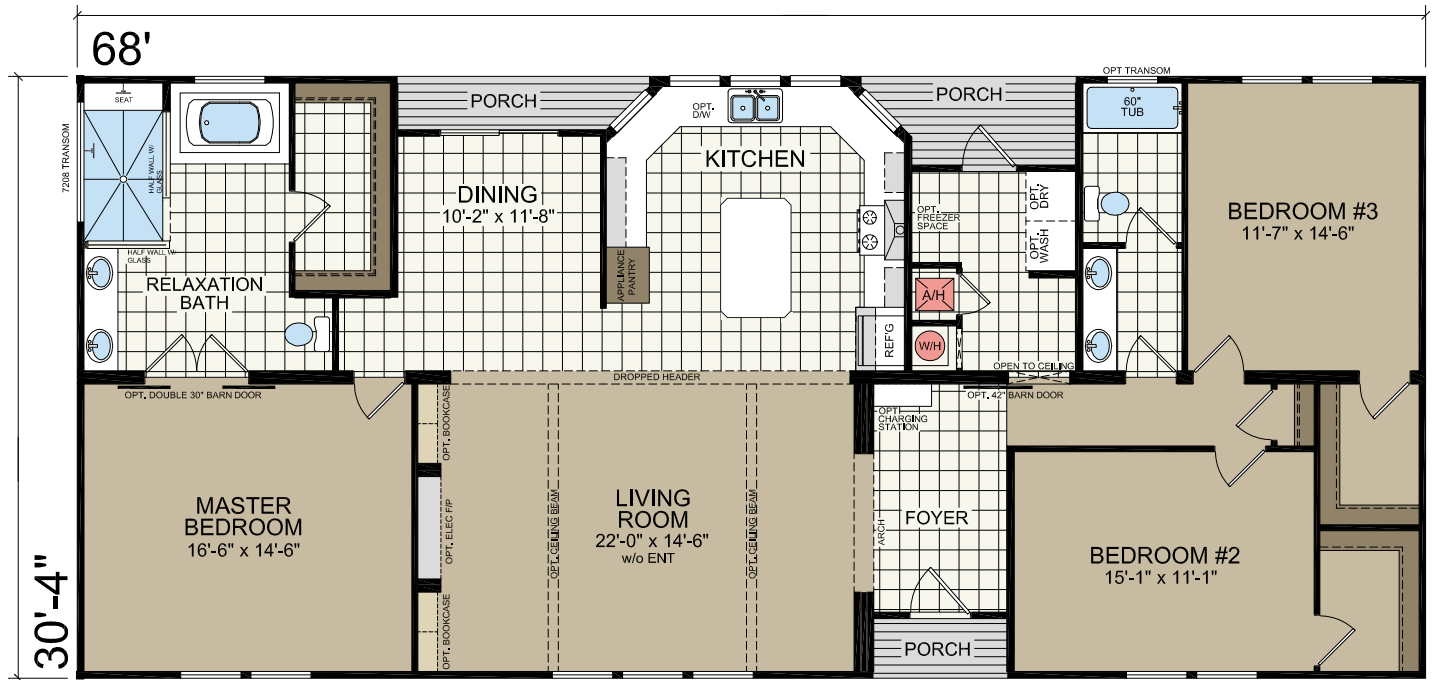
3266-01
ARCHDALE



3268-06

COVEVIEW

32' x 68'
3 bed-2 bath
2062 sq. ft.



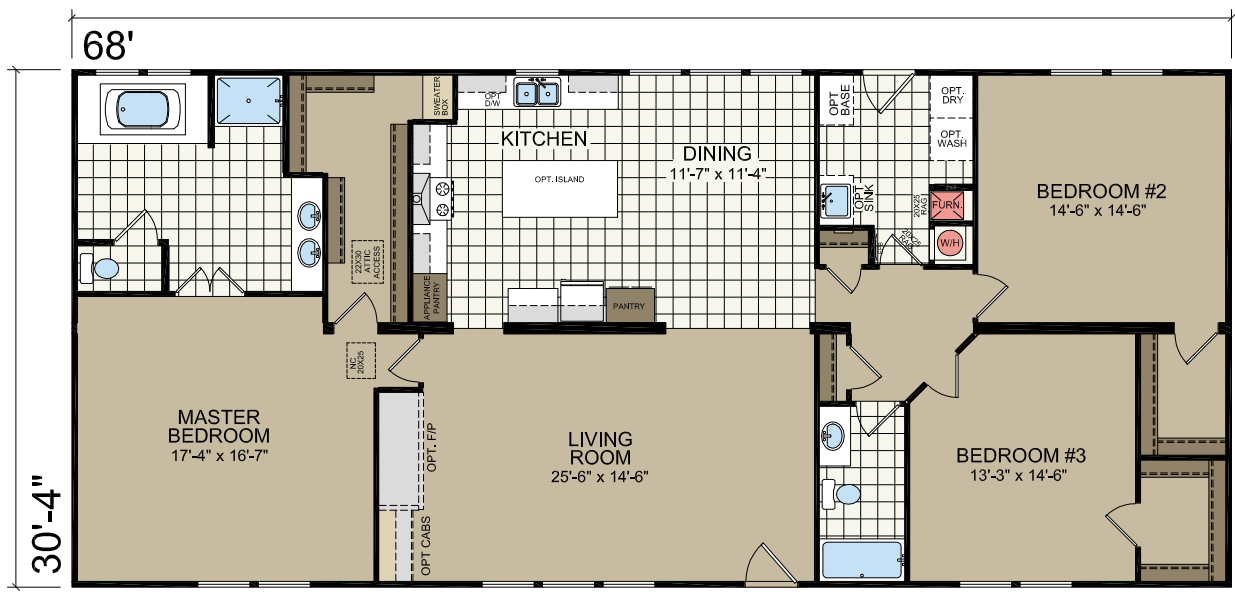
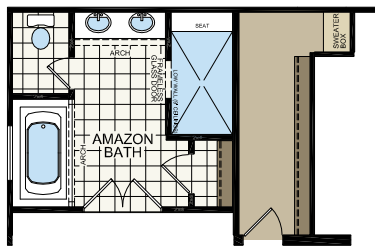
3268

FARM MANOR

32' x 68'
3 bed-2 bath
2062 sq. ft.

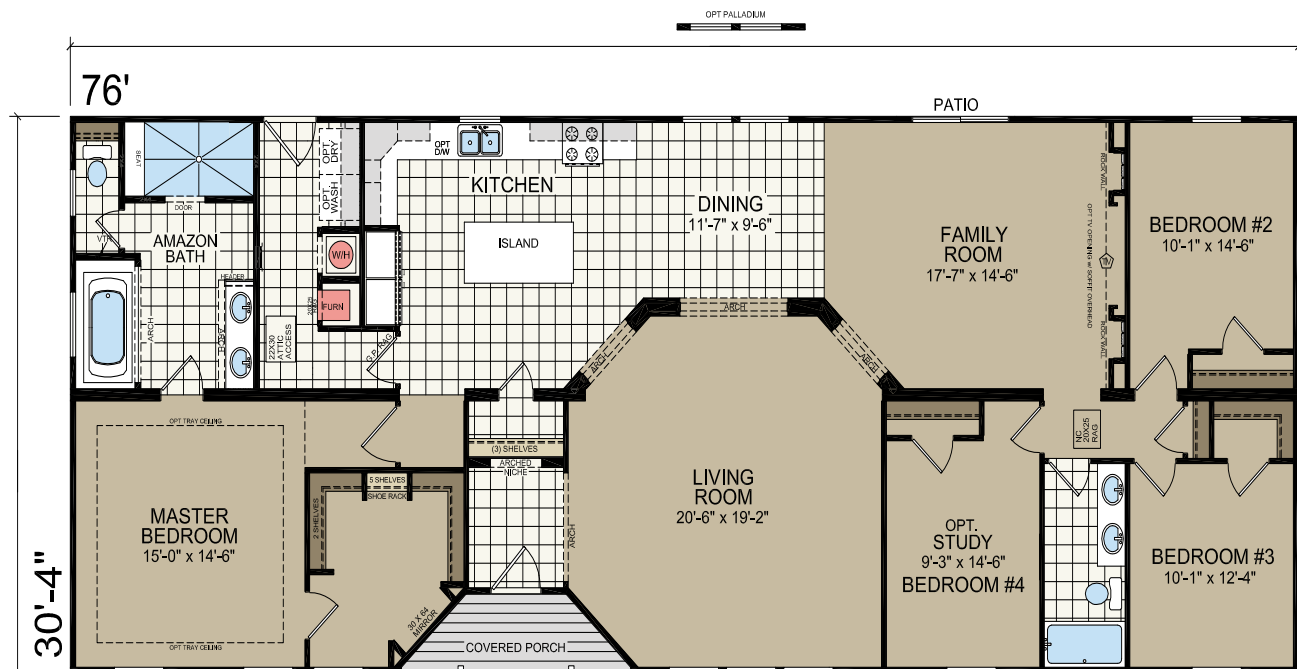


Shown with optional exterior



TRYON

Shown with optional exterior



3276-05
TRYON



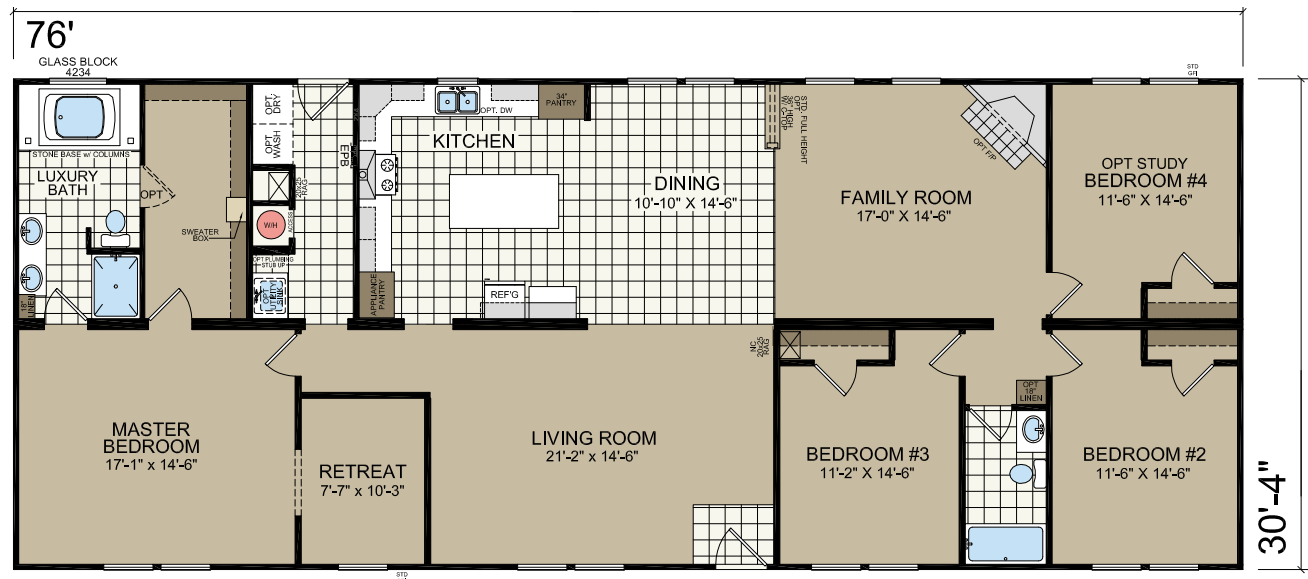
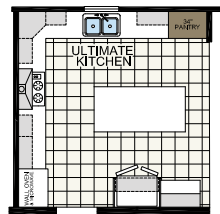
3276-07

PARENTS RETREAT

32' x 76'
4 bed-2 bath
2305 sq. ft.

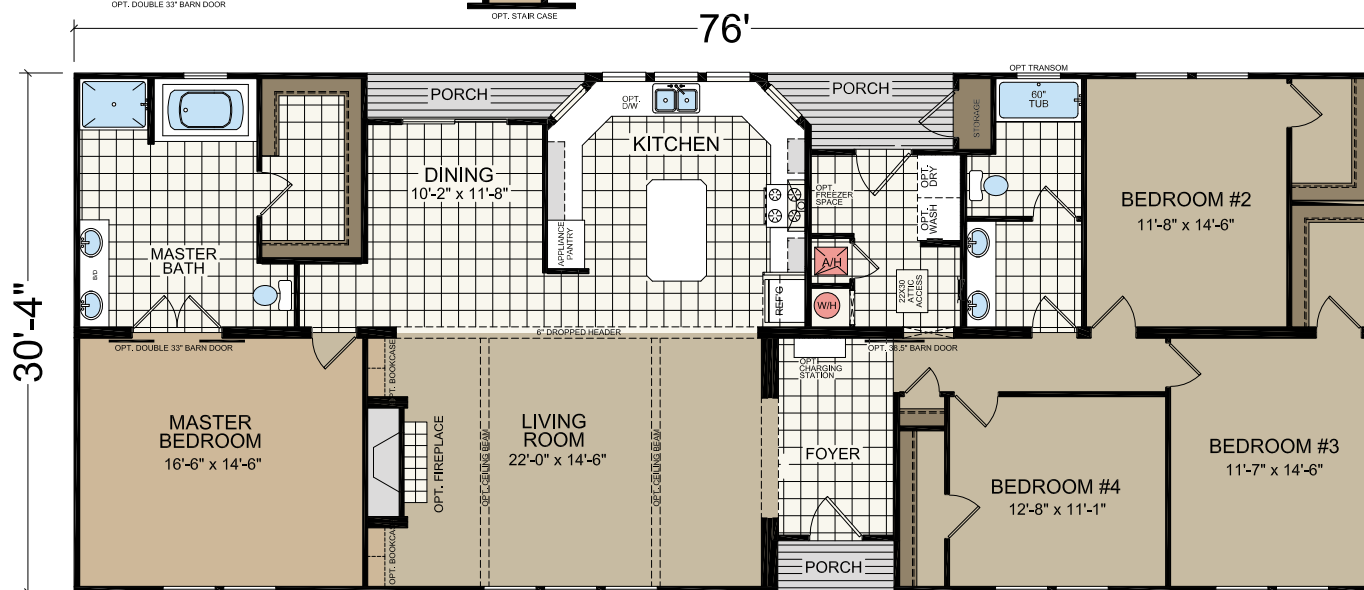
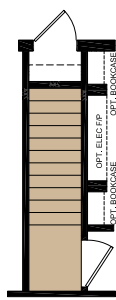
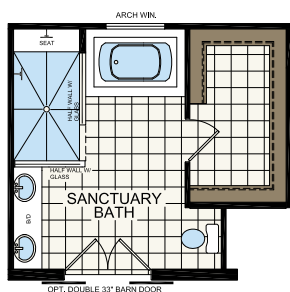


Shown with optional exterior



3276-11
LAKEVIEW

32' x 76'
4 bed-2 bath
2212 sq. ft.



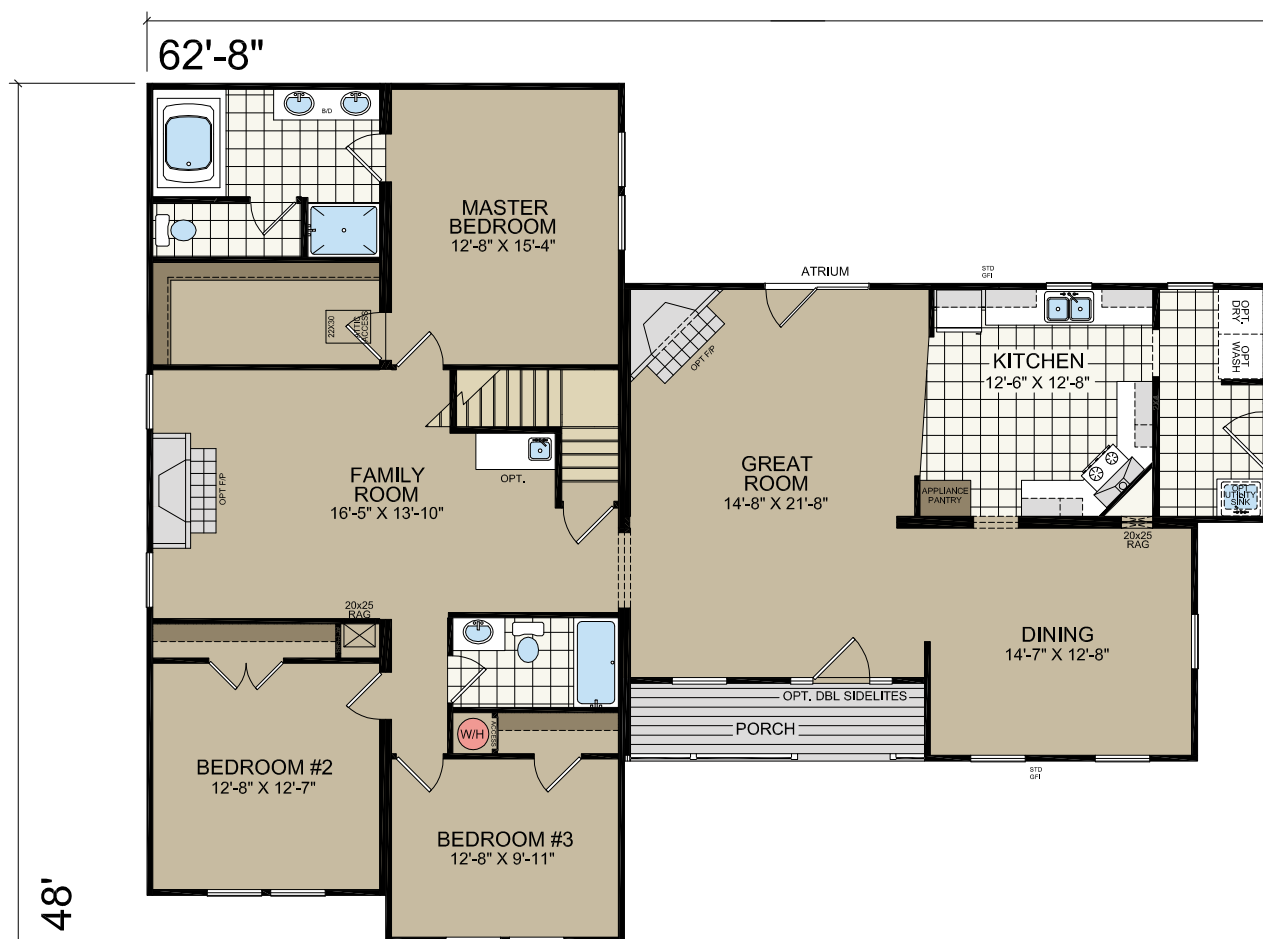
581T

COUNTRY ESTATE

65' x 48'
3 bed-2 bath
2080 sq. ft.



Shown with optional exterior

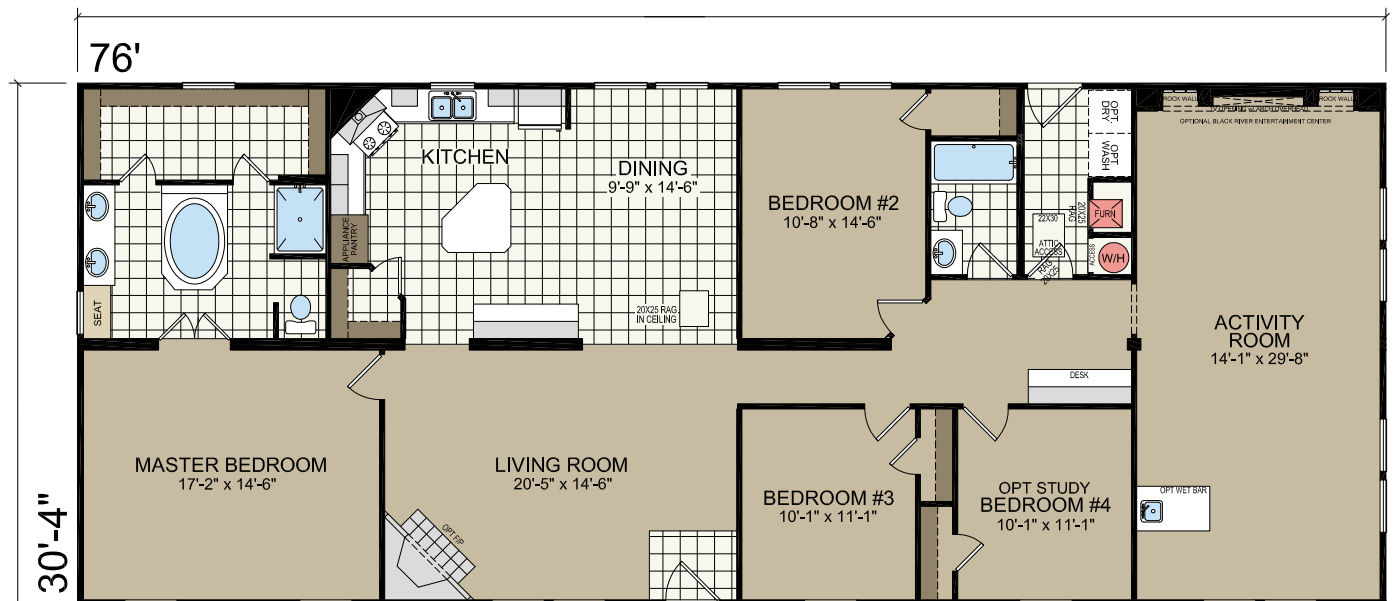


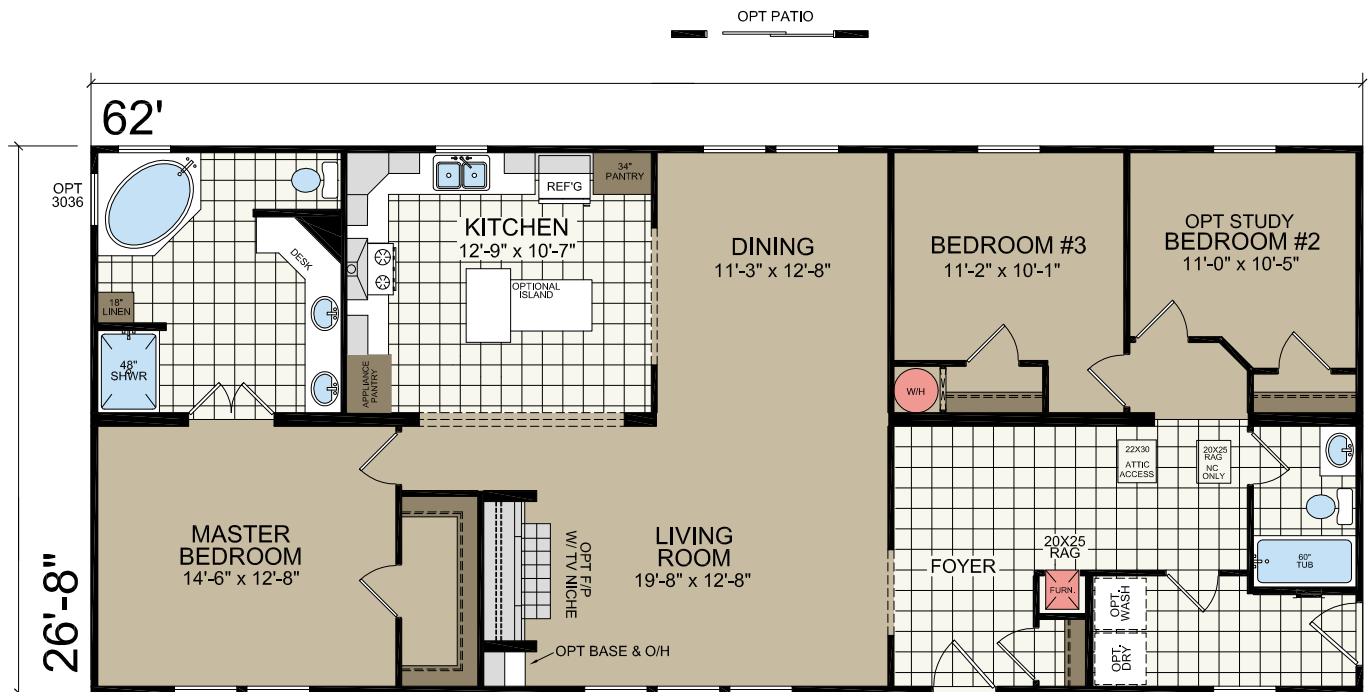
65' x 48'
3 bed-2 bath
2080 sq. ft.

[illegible]

76' x 32'
4 bed-2 bath
2305 sq. ft.

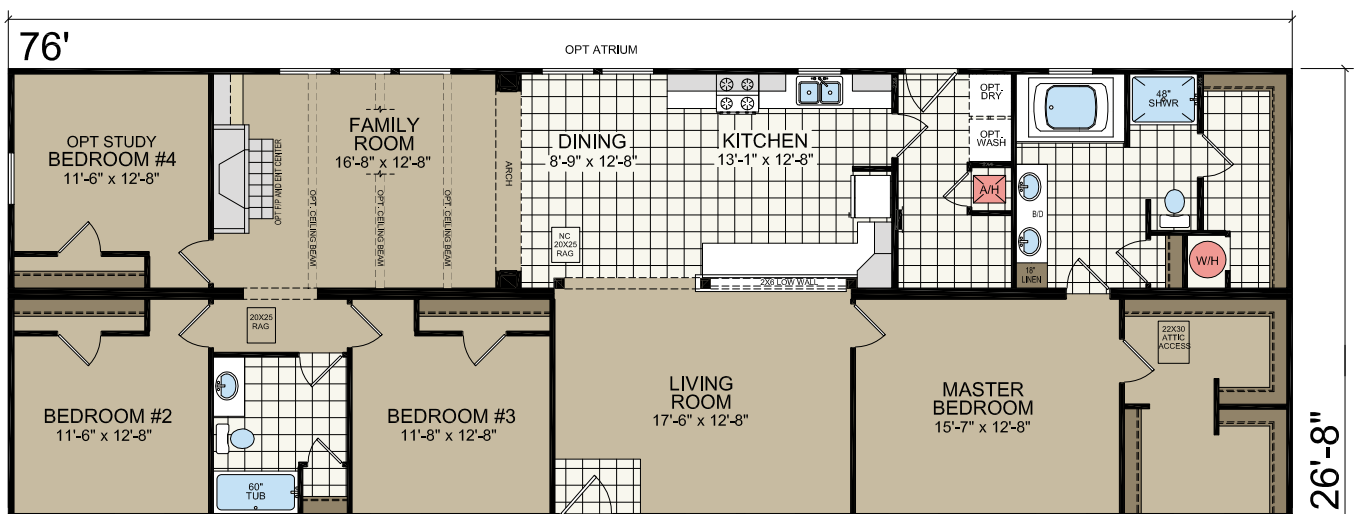
76' x 32'
4 bed-2 bath
2305 sq. ft.





879
CHEROKEE

76' x 28'
4 bed-2 bath
2027 sq. ft.



STANDARD FEATURES

CONSTRUCTION

Off Frame Construction (Unless On Frame Option Is Selected)
100 Mph Construction
R-30 Ceiling Insulation
R-13 Wall Insulation
R-22 Floor Insulation
7/16" OSB Exterior Structural Wall Sheathing
7/16" OSB Roof Sheathing
2X10 Framed Series Floor Joists 16" OC - Off Frame
2X4 Exterior Walls 16" OC
2X3 24" OC Interior Studs Throughout
2X4 16" OC Double Mate Line
8' Flat Ceilings - All Models
19/32" T&G OSB Floor Decking
5/12 Modular Trusses, 24" OC (Except Full Triple Sections)
Blown Ceiling Texture
Nominal 12" Overhangs

EXTERIOR

Double 5 Vinyl Siding
30 Year Architectural Fiberglass Shingles
Low E Vinyl Windows w/ Grids & Sills
38X82 Fiberglass Front Door w/ Deadbolt (No Storm)
38X82 9-Lite Rear Door w/ Deadbolt (No Storm)
Raised Panel Shutters (Front Door Side)
Fiber Cement Fascia

PLUMBING AND HEATING

Electric Furnace, Air Handler or Returns (Per Print) (No Trunkline)
Perimeter Heat Registers (Per Print)
50 Gallon Electric Water Heater
PEX Water Supply Lines
Whole House Shut-Off Valve (in Washer Box)
Water Shut-Off Valves at All Toilets & Sinks
Plumb & Wire for Washer & Dryer

ELECTRICAL

Total Electric & 200 Amp Service
40 Space Panel Box
Light Fixtures at All Exterior Doors
Exterior GFI Electrical Receptacles (Approved Locations Per Print)
GFI Receptacles in Kitchen and Baths
8 Wire Thermostat
Dual Bulb Glass Ceiling Lights (Throughout Except Walk-In Closets)

FLOOR COVERING

Rebond Carpet Pad
Simply Stated Carpet by Shaw® w/ Carpet Bar
"Congoleum DiamondFlor®" No Wax Vinyl Flooring
"Congoleum DiamondFlor®" Tile Foyer Entry

INTERIOR

½" Finished Sheetrock w/ Square Corners Throughout Including Closets
3 ⅝" Crown Throughout (White Painted)
2 ¼" Door/Window Molding Throughout (White Painted)
3 ¼" Baseboard Throughout (White Painted)
Flat Cove Molding in All Non-Walk-In Closets
2" Blinds Throughout
Vented Wire Shelving in Closets & Over Washer/Dryer Areas
White 2-Panel Interior Doors
Brushed Nickel Door Knobs & (3) Mortised Hinges

KITCHEN & BATHS

Stainless Steel Kitchen Sink w/ Brushed Nickel Single-Lever Metal Faucet
Vintage Vanity Mirrors
Fiberglass Tubs/Showers (Per Print) w/ Metal Faucets
48" 1-Pc Showers w/ Pivot Door (Unless Otherwise Noted)
Vanity Lights Above Each Sink (2 Bulb)
Porcelain Sinks w/ Single-Lever Metal Faucets
Platform Tub w/ Metal Filler in Glamour Baths (Per Print)

APPLIANCE

Stainless Venetian Range Hood
Black 18 Cu Ft Frost-Free Refrigerator (w/ Ice)
Black 30" Free-Standing Electric Range

CABINETS

Champion 42" Box Cabinets w/ 2 Adjustable Shelves
¾" MDF Stiles w/ Pocket Screw Construction
Wide Cabinet Doors (Where Available)
⅜" Bare Board Side Panels w/ Luan Overlay
Cabinet Above Refrigerator
Lined Base & Overhead Cabinets
Coffee Cherry Flat Panel Cabinet Doors w/ 2-Hole Pulls
Concealed Cabinet Door Hinges (Soft Close)
Matching Toe-Kicks In Kitchens (Same as Cabinet Color)
½ Center & Finished Bottom Shelf in Base Cabinets
Cabinet Crown Molding
Drawers Over Doors in Kitchen Base Cabinets
Furniture Style Vanities
Laminate Countertops & Edging in Kitchen and Baths
Dual Sinks in Glamour Baths (Most Models)
Bank of Drawers in Master Bath (Per Plan)
Ceramic (X1 Row of 4"X8") or Glass (X2 Rows of 3"X6") Backsplash Throughout
Ceramic (36" W X 28" H) or Glass (36" W X 27" H) Wall Behind Range
Appliance Pantry w/ Receptacle (Where Available)

ATLANTIC[®] HOMES

4055 US 401 S
Lillington, NC 27546

atlantichomesnc.com

CHAMPION[®]

MANUFACTURED BEAUTIFULLY[™]

04175000