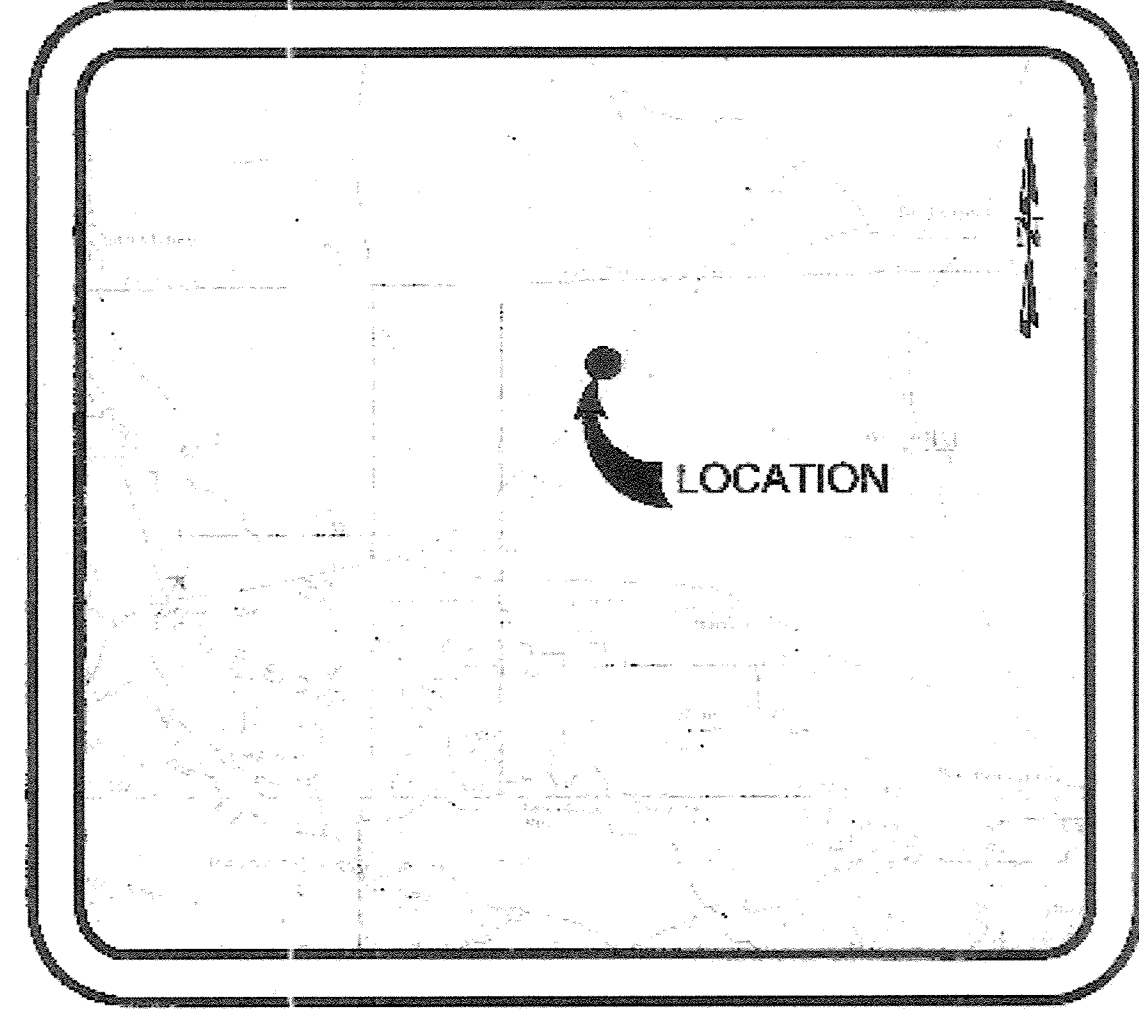
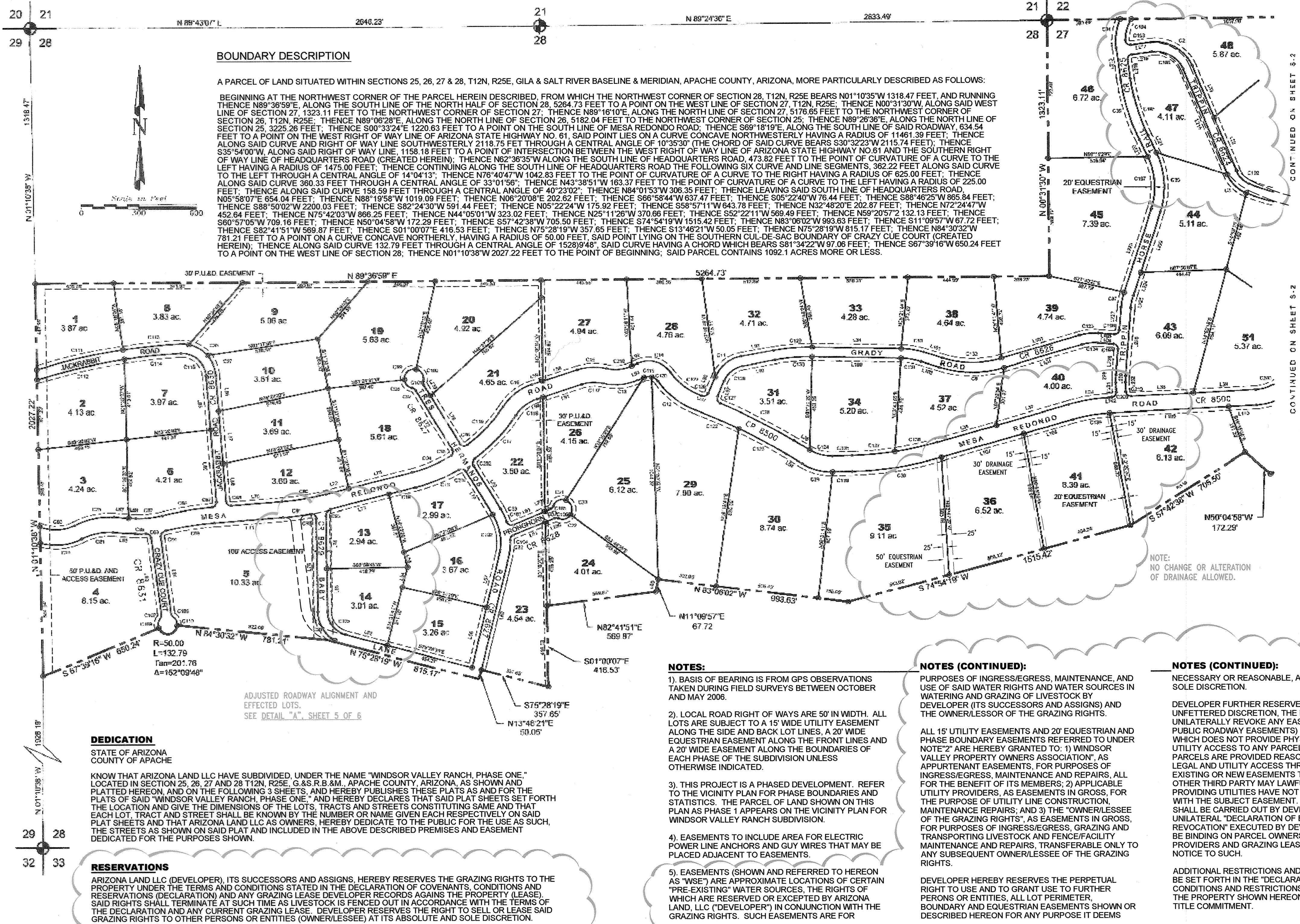






# WINDSOR VALLEY RANCH SUBDIVISION PHASE 1 - AMENDED



LEGEND	
	FOUND SECTION CORNER MONUMENT
	SET 5/8" NEHANAL UMBRUM CAP
	SET 5/8" REBAR/PLASTIC CAP
C60	BOUNDARY CURVE DESIGNATION
L50	BOUNDARY LINE DESIGNATION
	SUBDIVISION BOUNDARY LINE

Arizona Land LLC  
1570 Plaza West Drive  
Prescott, AZ 86303  
Phone: (928) 771-1003

**ANDERSON**  
ENGINEERING COMPANY, INC.  
977 West 2100 South  
SALT LAKE CITY, UTAH 84119  
(801) 972-8222

DRAWN BY: KAC  
CHECKED: JDA  
APPROVED:

**WINDSOR VALLEY RANCH  
SUBDIVISION  
PHASE 1 - AMENDED**

**FINAL PLAT**  
PORTIONS OF SECTIONS 25, 26, 27  
& 28 T12N, R25E, G&S R.B.M.  
APACHE COUNTY, ARIZONA

03-213-02  
17-OCT-2006  
AS SHOWN

**1 of 6**

REVISION DATE: 05/25/08

STATE OF ARIZONA  
COUNTY OF APACHE) SS.  
Fee No. 2008-4882  
I hereby certify that the within instrument was filed and recorded.  
6-27-2008, at 10:55AM  
in Book No. 89, Page 1  
Recorder  
By: Stephen R. Deputy

**APPROVAL**  
APPROVED THIS 17 DAY OF June, 2008 BY THE APACHE COUNTY BOARD OF SUPERVISORS.  
BY: *[Signature]* ATTEST: *[Signature]* CLERK  
**PLANNING & ZONING**  
APPROVED: *[Signature]* DATE: 6/17/08  
PLANNING & ZONING DIRECTOR  
APPROVED: *[Signature]* DATE: 6/17/08  
COUNTY ENGINEER  
APPROVED: *[Signature]* DATE: 6/17/08  
CHAIRPERSON OF PLANNING & ZONING COMMISSION

**CERTIFICATION:**  
I CERTIFY THAT THE SURVEY AS DRAWN ON THIS PLAT WAS COMPLETED BY ME OR UNDER MY DIRECT SUPERVISION AND THAT IT CONFORMS TO ALL MINIMUM STANDARDS AND SPECIFICATIONS. THIS CERTIFICATION APPLIES TO AMENDMENTS TO THE ORIGINAL DRAWING ONLY.



EXPIRES: 03/31/09



[illegible]

**VICINITY MAP**  
NOT TO SCALE



Arizona Land LLC  
1570 Plaza West Drive  
Prescott, AZ 86303  
Phone: (928) 771-1003



DRAWN BY: RKT

ENGINEER: SDA

APPROVED:

WINDSOR VALLEY RANCH  
SUBDIVISION  
PHASE 1 - AMENDED

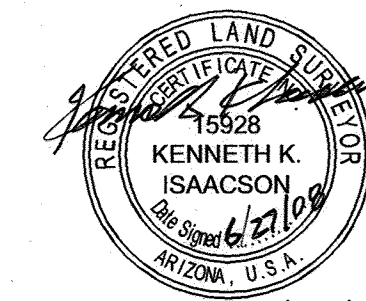
**FINAL PLAT**  
PORTIONS OF SECTIONS 25, 26, 27  
& 28 T12N, R25E, G&SRB&M  
APACHE COUNTY, ARIZONA

Project	03-213-02
Date	17-OCT-2006
Scale	AS SHOWN

2 of 6

REVISION DATE: 05/25/08

**CERTIFICATION:**  
I CERTIFY THAT THE SURVEY AS DRAWN ON THIS  
PLAT WAS COMPLETED BY ME OR UNDER MY DIRECT  
SUPERVISION AND THAT IT CONFORMS TO ALL  
MINIMUM STANDARDS AND SPECIFICATIONS. THIS  
CERTIFICATION APPLIES TO AMENDMENTS TO THE  
ORIGINAL DRAWING ONLY.



EXPIRES: 03/31/09

STATE OF ARIZONA)  
COUNTY OF APACHE) SS.

Fee No. 2008-4882

I hereby Certify that the within instrument  
was filed and recorded.

6-27, 2008, at 10:55 AM  
in Book No. B9, Page 7

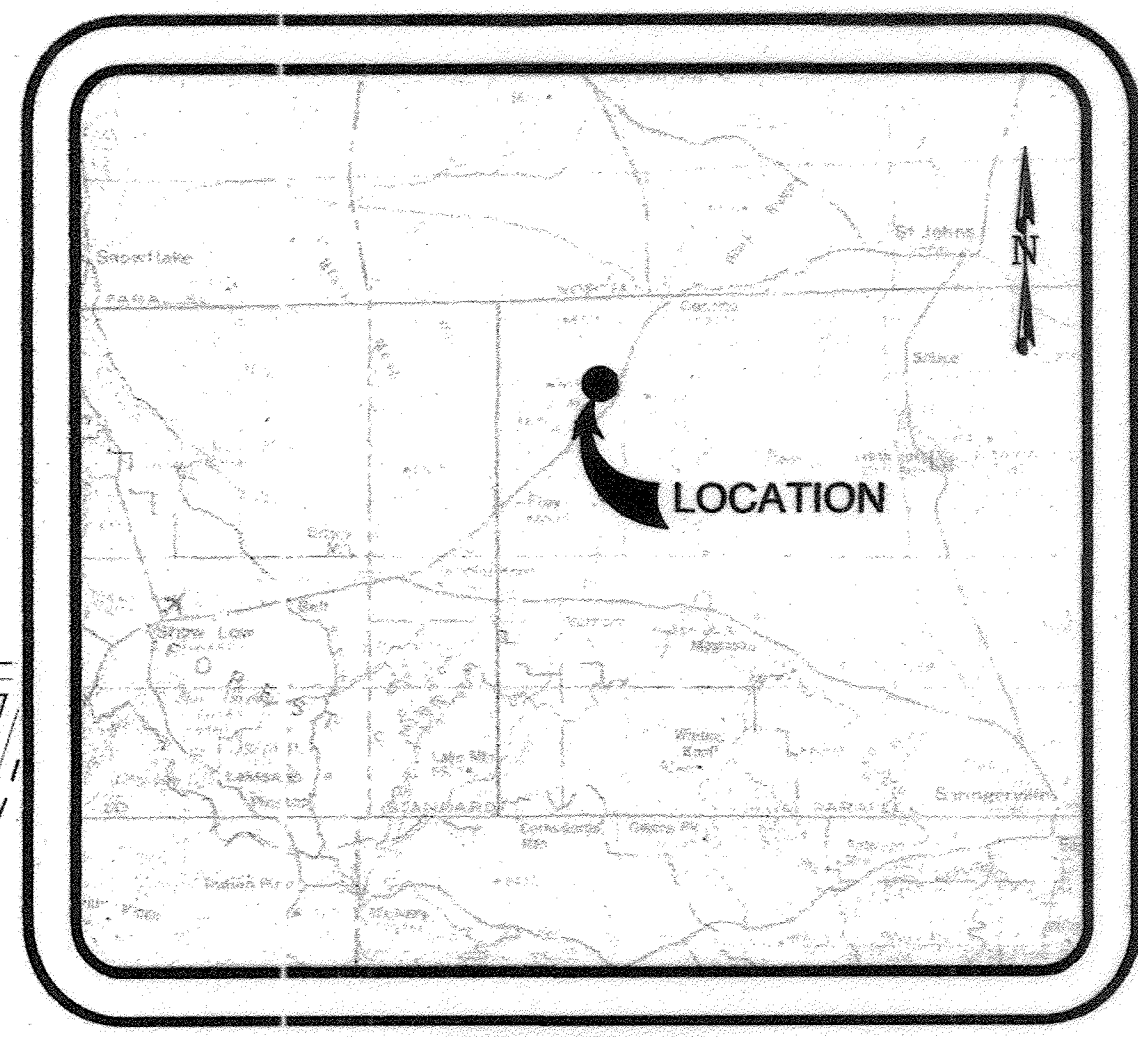
By Stephen H. Hoon Recorder  
Deputy



B9 Page 38 (3 of 6)

# WINDSOR VALLEY RANCH SUBDIVISION PHASE 1 - AMENDED

ADDED EXISTING ACCESS EASEMENTS ALONG THE NORTH PART OF SECTIONS 25 AND 26 INCLUDING A 50' EASEMENT ALONG THE NORTH PORTION OF SECTION 25, AND A 100'x100' EASEMENT IN THE NE CORNER OF SECTION 26 AS SHOWN.



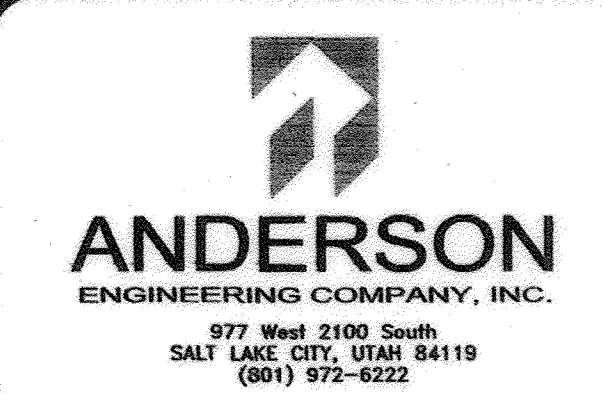
VICINITY MAP  
NOT TO SCALE

CERTIFICATION:  
I CERTIFY THAT THE SURVEY AS DRAWN ON THIS PLAT WAS COMPLETED BY ME OR UNDER MY DIRECT SUPERVISION AND THAT IT CONFORMS TO ALL MINIMUM STANDARDS AND SPECIFICATIONS. THIS CERTIFICATION APPLIES TO AMENDMENTS TO THE ORIGINAL DRAWING ONLY.



EXPIRES: 03/31/09

Arizona Land LLC  
1570 Plaza West Drive  
Prescott, AZ 86303  
Phone: (928) 771-1003



DRAWN BY: RKT

ENGINEER: SDA

APPROVED:

WINDSOR VALLEY RANCH  
SUBDIVISION  
PHASE 1 - AMENDED

FINAL PLAT

PORTIONS OF SECTIONS 25, 26, 27  
& 28, T12N, R25E G&SRB&M  
APACHE COUNTY, ARIZONA

Project 03-213-02

Date 17-OCT-2006

Scale AS SHOWN

3 of 6

REVISION DATE: 05/25/08

CONTINUED ON SHEET S-2

CONTINUED ON SHEET S-2

STATE OF ARIZONA)  
COUNTY OF APACHE) SS.  
Fee No. 7608-4882  
I hereby Certify that the within instrument  
was filed and recorded.  
6-27-2008, at 10:55AM  
in Book No. B9, Page 3  
By *Stephanie P. [Signature]* Deputy  
Recorder

**LEGEND**

- FOUND SECTION CORNER MONUMENT
- SET 5/8" REBAR/ALUMINUM CAP
- SET 5/8" REBAR/PLASTIC CAP
- C60 BOUNDARY CURVE DESIGNATION
- L60 BOUNDARY LINE DESIGNATION
- SUBDIVISION BOUNDARY LINE
- WELL LOCATION
- OVERHEAD POWER LINE





B-9 Page 38 (4 of 6)

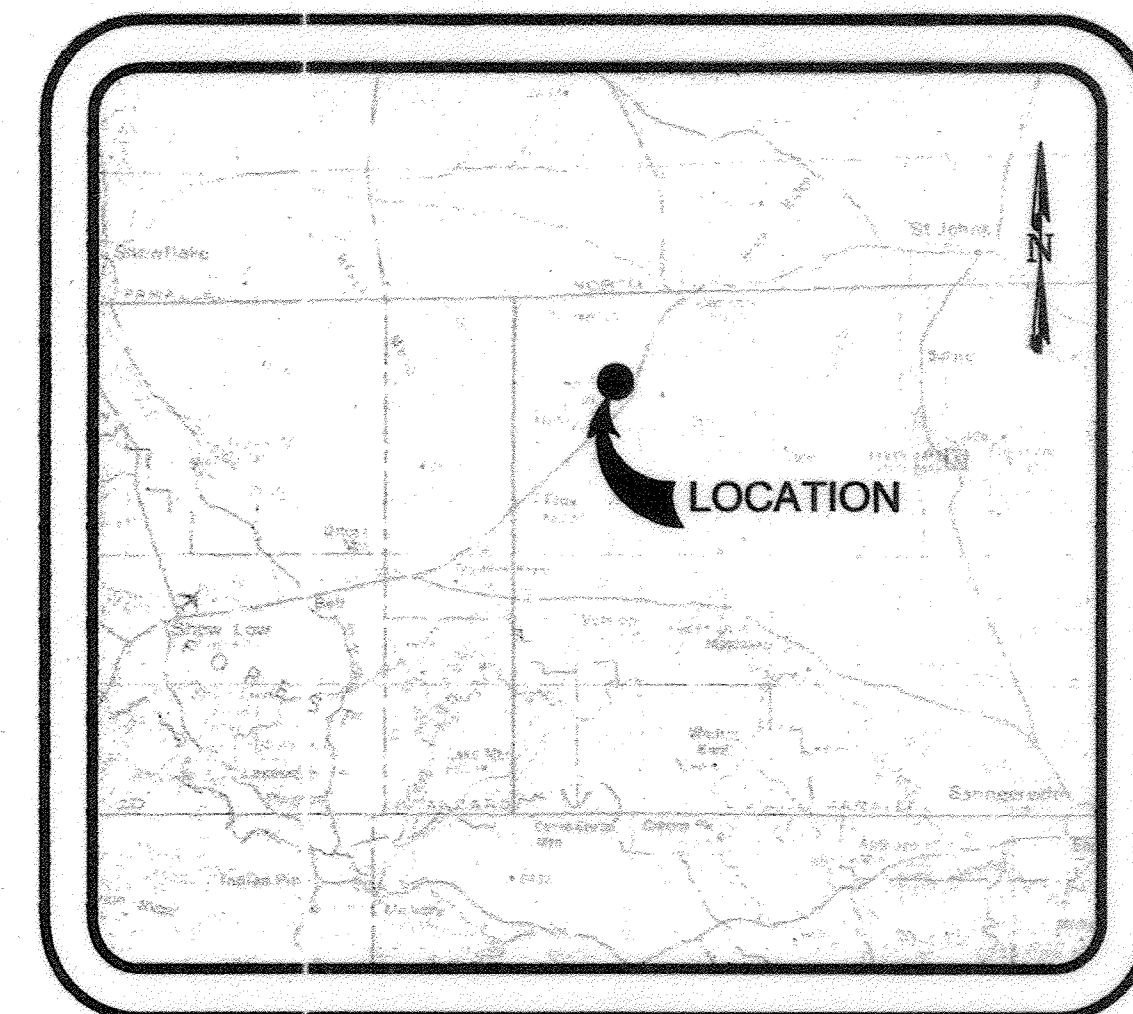
LINE	LENGTH	BEARING
L1	76.44	N05°22'40"E
L2	126.92	N66°58'44"E
L3	126.71	N29°31'31"E
L4	371.50	N87°13'11"E
L5	447.63	N87°13'11"E
L6	440.01	N87°13'11"E
L7	444.11	N87°13'11"E
L8	440.69	N87°13'11"E
L9	441.10	N87°13'11"E
L10	441.15	N87°13'11"E
L11	437.70	N87°13'11"E
L12	172.73	N87°13'11"E
L13	267.74	S88°19'58"E
L14	440.72	S88°19'58"E
L15	599.68	S88°19'58"E
L16	698.70	S88°19'58"E
L17	382.93	S88°19'58"E
L18	539.92	S88°30'21"E
L19	463.81	N28°53'14"E
L20	491.60	N57°07'54"W
L21	361.70	N57°07'54"W
L22	484.19	S75°05'34"W
L23	484.19	S75°05'34"W
L24	196.86	S01°40'02"W
L25	491.86	S58°30'21"E
L26	239.79	S58°30'21"E
L27	1149.49	S69°28'17"E
L28	252.14	N19°01'12"E
L29	446.90	S71°27'04"W
L30	460.07	S71°27'04"W
L31	188.23	S71°27'04"W
L32	229.94	S71°27'04"W
L33	229.94	S71°27'04"W
L34	461.22	S89°00'53"E
L35	96.05	S59°11'41"E
L36	319.17	N73°57'00"E
L37	390.29	N73°57'00"E
L38	324.02	N86°53'53"E
L39	324.02	N86°53'53"E
L40	135.83	N38°08'32"E
L41	135.83	N38°08'32"E
L42	213.57	N83°47'32"E
L43	194.70	N78°44'14"E
L44	352.07	N73°46'18"E
L45	125.61	N73°46'18"E
L46	285.13	N82°40'05"E
L47	836.19	N81°39'17"E
L48	696.77	N81°39'17"E
L49	377.31	N81°39'17"E
L50	318.10	S75°59'54"E

LINE	LENGTH	BEARING
L52	75.27	S83°19'58"E
L53	175.93	S63°37'44"E
L54	106.79	N14°31'41"E
L55	76.98	N14°22'25"W
L56	317.17	N13°45'31"E
L57	277.21	N13°45'31"E
L58	185.73	N71°57'13"E
L59	56.71	N71°57'13"E
L60	67.72	N11°09'57"E
L61	178.09	N67°37'44"E
L62	105.07	S73°09'45"E
L63	105.07	S73°09'45"E
L64	446.97	S73°40'47"E
L65	314.15	S73°40'47"E
L66	146.19	S63°36'34"E
L67	76.53	S83°25'26"E
L68	115.98	S83°25'26"E
L69	38.07	S83°25'26"E
L70	261.63	N83°29'24"E
L71	355.54	N83°29'24"E
L72	120.52	N73°37'35"E
L73	320.22	S75°05'34"W
L74	320.22	S75°05'34"W
L75	320.22	S75°05'34"W
L76	338.57	N73°37'35"E
L77	361.32	N32°00'08"W
L78	292.30	N32°00'08"W
L79	265.25	S33°00'08"E
L80	267.40	S33°00'08"E
L81	178.79	N67°37'44"E
L82	595.06	N13°45'31"E
L83	396.84	S07°39'13"E
L84	398.31	S07°39'13"E
L85	279.51	S04°45'17"E
L86	187.79	S04°45'17"E
L87	271.52	S04°45'17"E
L88	195.69	S04°45'17"E
L89	375.06	S04°45'17"E
L90	32.19	N71°57'13"E
L91	210.26	N71°57'13"E
L92	34.31	N68°17'33"E
L93	34.31	N68°17'33"E
L94	96.05	S59°11'41"E
L95	222.41	S01°40'02"W
L96	46.14	N21°00'42"E
L97	90.02	N73°39'41"E
L98	173.15	N73°39'41"E
L99	173.15	N73°39'41"E
L100	461.22	S89°00'53"E
L101	100.05	S75°59'54"E

LINE	LENGTH	BEARING
L102	100.05	S72°56'39"E
L103	423.01	N73°37'49"E
L104	423.01	N73°37'49"E
L105	83.06	S85°40'14"E
L106	83.02	S85°40'14"E
L107	443.72	N73°57'00"E
L108	265.73	N73°57'00"E
L109	617.50	N86°53'53"E
L110	145.30	N86°53'53"E
L111	23.59	N13°30'10"E
L112	23.59	N13°30'10"E
L113	213.57	N83°47'32"E
L114	31.75	N81°15'53"E
L115	38.81	N81°15'53"E
L116	194.70	N78°44'14"E
L117	55.00	N82°19'14"E
L118	92.30	N85°54'15"E
L119	45.00	N82°19'14"E
L120	92.30	N85°54'15"E
L121	32.48	N65°49'45"E
L122	32.48	N65°49'45"E
L123	71.32	N86°35'13"E
L124	71.32	N86°35'13"E
L125	88.99	N57°22'19"E
L126	88.99	N57°22'19"E
L127	73.85	N61°59'21"E
L128	57.87	N61°45'13"E
L129	262.97	S22°06'48"E
L130	446.40	S22°06'48"E
L131	190.58	S22°06'48"E
L132	464.49	N73°46'18"E
L133	112.61	S87°21'54"E
L134	112.61	S87°21'54"E
L135	285.13	N62°40'05"E
L136	436.73	N81°39'17"E
L137	582.10	N81°39'17"E
L138	442.73	N81°39'17"E
L139	458.70	N81°39'28"E
L140	318.10	S75°59'54"E
L141	151.13	N81°23'25"E
L142	490.58	N81°23'25"E
L143	348.45	N81°23'25"E
L144	89.76	N78°42'38"E
L145	101.74	N76°01'51"E
L146	95.49	N78°45'33"E
L147	103.50	N78°01'54"E
L148	55.45	S65°33'45"E
L149	82.02	S69°15'55"E
L150	55.45	S65°33'45"E
L151	250.75	S85°16'29"E

LINE	LENGTH	BEARING
L152	230.40	S85°16'29"E
L153	279.38	S49°14'17"E
L154	381.82	S49°14'17"E
L155	89.88	S44°27'51"E
L156	76.56	S44°27'51"E
L157	189.12	S39°41'26"E
L158	189.12	S39°41'26"E
L159	19.77	S70°02'24"E
L160	21.90	S70°02'24"E
L161	73.09	S19°01'12"W
L162	71.45	S19°01'12"W
L163	259.89	S70°02'24"E
L164	257.24	S70°02'24"E
L165	388.78	S28°53'14"W
L166	386.22	S28°53'14"W
L167	537.54	S28°53'14"W
L168	595.25	S28°53'14"W
L169	513.45	S28°53'14"W
L170	411.41	S69°18'19"E
L171	508.80	S69°18'19"E
L172	30.28	S69°18'19"E
L173	465.92	N63°37'44"W
L174	636.88	N58°30'21"W
L175	220.52	N58°30'21"W
L176	131.39	S45°16'04"W
L177	489.92	N88°19'58"W
L178	327.06	N88°19'58"W
L179	100.00	S00°40'28"E
L180	160.00	N88°19'58"W
L181	100.00	N00°40'28"W
L182	160.00	S88°19'58"E
L183	220.52	N58°30'21"W
L184	220.52	N58°30'21"W
L185	268.66	N88°19'58"W
L186	171.81	S87°13'11"W
L187	438.81	S87°13'11"W
L188	440.13	S87°13'11"W
L189	441.04	S87°13'11"W
L190	444.36	S87°13'11"W
L191	440.14	S87°13'11"W
L192	440.01	S87°13'11"W
L193	429.97	S87°13'11"W
L194	388.41	S87°13'11"W
L195	126.71	S29°31'31"W
L196	232.42	S05°22'24"E
L197	49.54	N73°03'32"W
L198	502.75	N77°25'47"W
L199	1039.30	N77°25'47"W
L200	46.42	S29°44'05"E
L201	175.44	S77°25'47"E

LINE	LENGTH	BEARING
L202	311.39	S77°25'47"E
L203	352.20	S77°25'47"E
L204	435.05	S77°25'47"E
L205	267.97	S77°25'47"E
L206	57.51	S05°22'24"E
L207	421.86	S71°27'04"W
L208	559.10	S22°06'48"E
L209	558.82	S22°06'48"E
L210	182.43	S71°27'04"W
L211	220.52	N58°30'21"W
L212	220.52	N58°30'21"W
L213	220.52	N58°30'21"W
L214	220.52	N58°30'21"W
L215	220.52	N58°30'21"W
L216	220.52	N58°30'21"W
L217	220.52	N58°30'21"W
L218	101.61	S07°49'48"E
L219	171.51	S07°49'48"E
L220	100.00	S26°10'22"E
L221	100.00	S26°10'22"E
L222	323.06	S18°19'23"W
L223	448.53	S18°19'23"W
L224	125.47	S18°19'23"W
L225	66.90	S11°20'13"W
L226	352.22	S04°21'02"W
L227	118.06	S04°21'02"W
L228	134.16	S04°21'02"W
L229	40.17	S00°48'28"W
L230	33.99	S00°48'28"W
L231	50.07	S02°44'06"E
L232	49.43	S02°44'06"E
L233	66.51	N32°00'08"W
L234	132.13	N59°20'57"W
L235	30.82	N67°37'44"E
L236	50.38	S67°37'44"W
L237	198.86	N01°40'02"E
L238	640.72	N75°05'34"E
L239	327.66	N75°05'34"E
L240	248.13	S57°07'54"E
L241	612.13	S57°07'54"E
L242	14.76	N86°53'53"E
L243	20.35	S85°16'29"E
L244	296.91	N61°52'42"E
L245	222.61	N35°54'00"E
L246	6.27	S69°16'54"E
L247	253.78	N19°01'12"E
L248	306.35	S84°01'53"E
L249	163.29	S43°39'03"E
L250	281.72	S76°40'47"E
L251	102.44	S49°14'17"E

VICINITY MAP  
NOT TO SCALE

CERTIFICATION:  
I CERTIFY THAT THE SURVEY AS DRAWN ON THIS  
PLAT WAS COMPLETED BY ME OR UNDER MY DIRECT  
SUPERVISION AND THAT IT CONFORMS TO ALL  
MINIMUM STANDARDS AND SPECIFICATIONS. THIS  
CERTIFICATION APPLIES TO AMENDMENTS TO THE  
ORIGINAL DRAWING ONLY.



EXPIRES: 03/31/09

Arizona Land LLC

1570 Plaza West Drive  
Prescott, AZ 86303  
Phone: (928) 771-1003

DRAWN BY: RKT

ENGINEER: SDA

APPROVED:

WINDSOR VALLEY RANCH  
SUBDIVISION  
PHASE 1 - AMENDEDFINAL PLAT  
PORTIONS OF SECTIONS 25, 26,  
27 & 28, T12N, R25E G&SRB&M  
APACHE COUNTY, ARIZONA

Project 03-213-02

Date 17-OCT-2006

Scale AS SHOWN

4 of 6

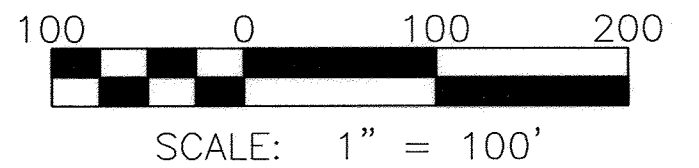
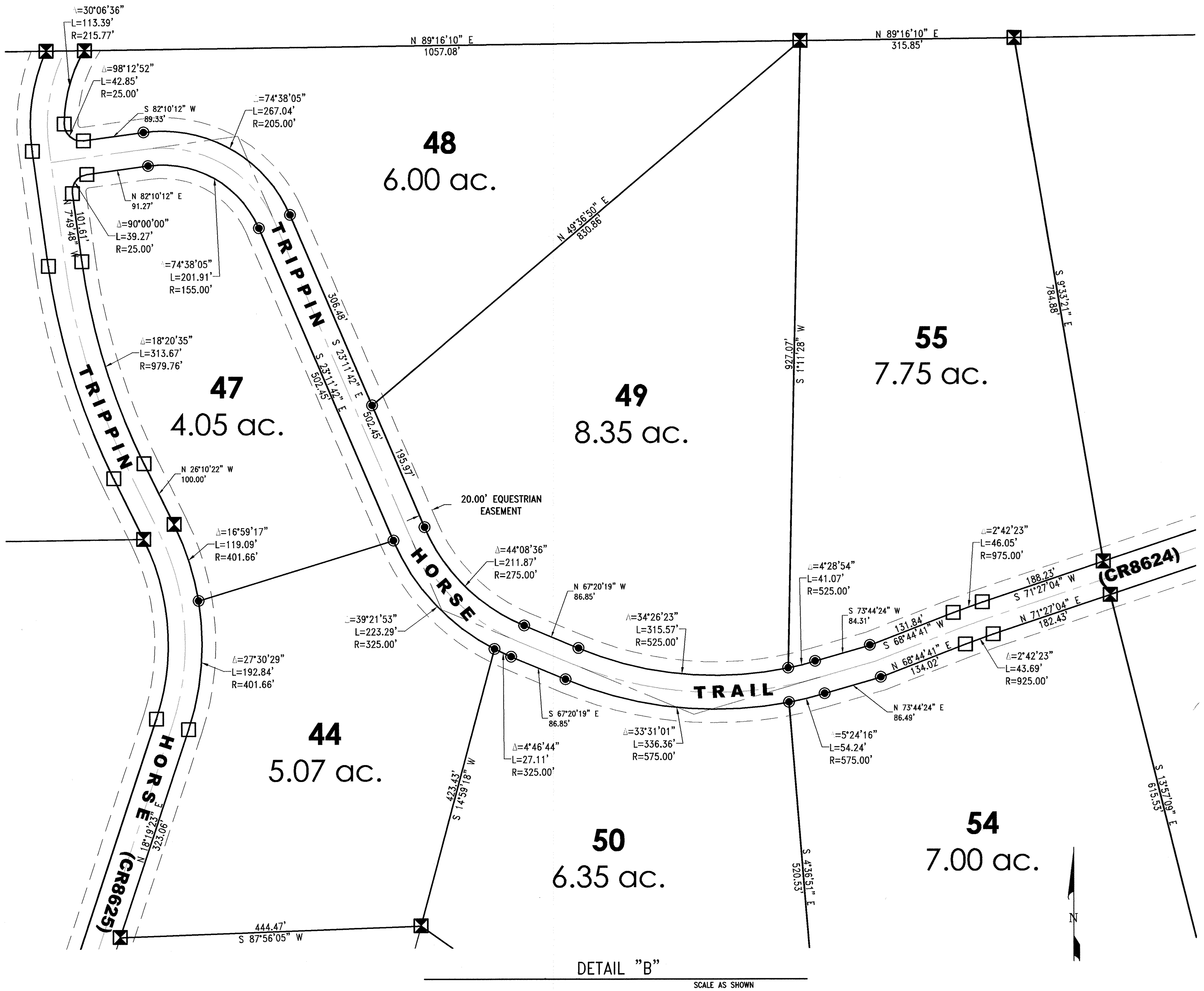
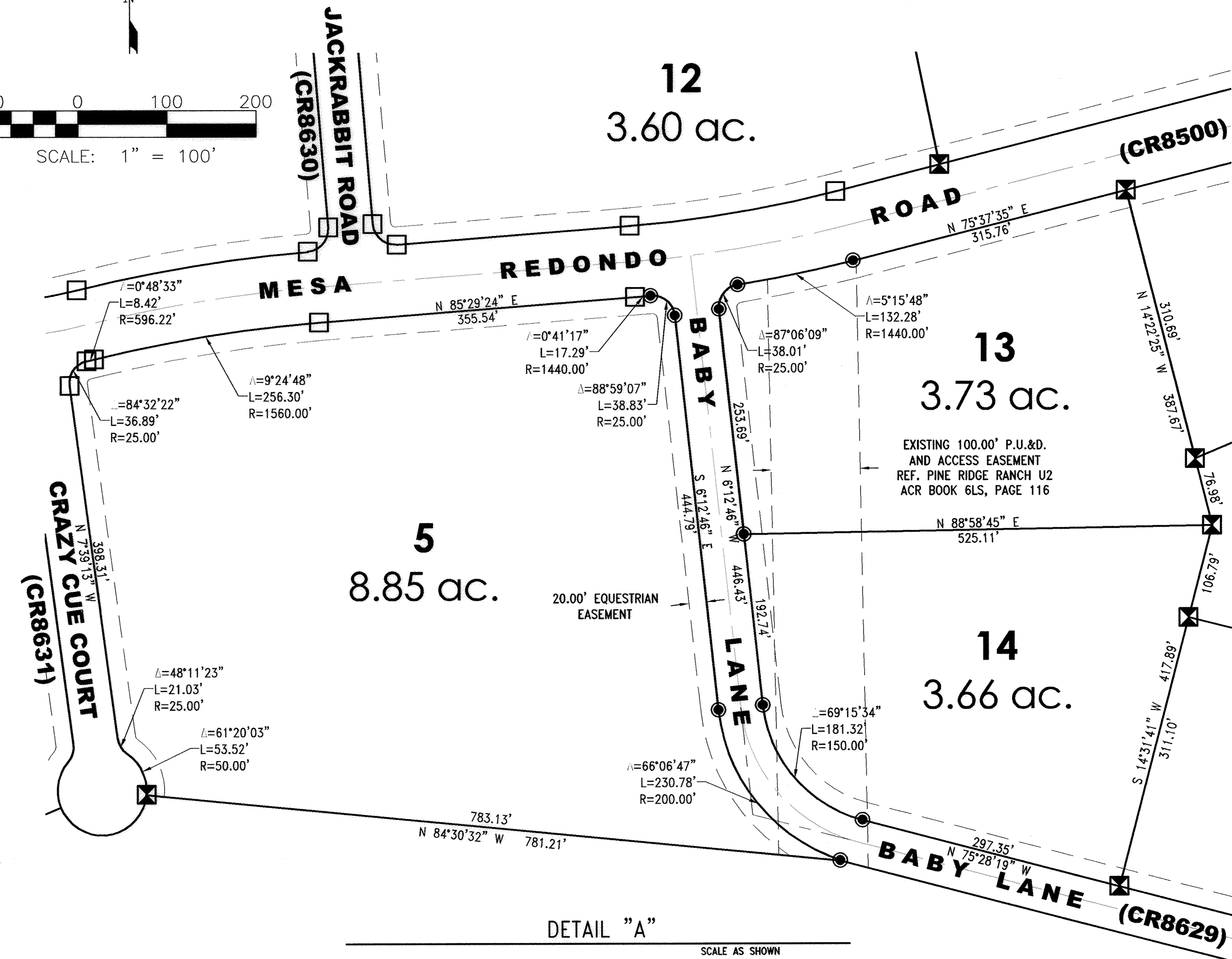
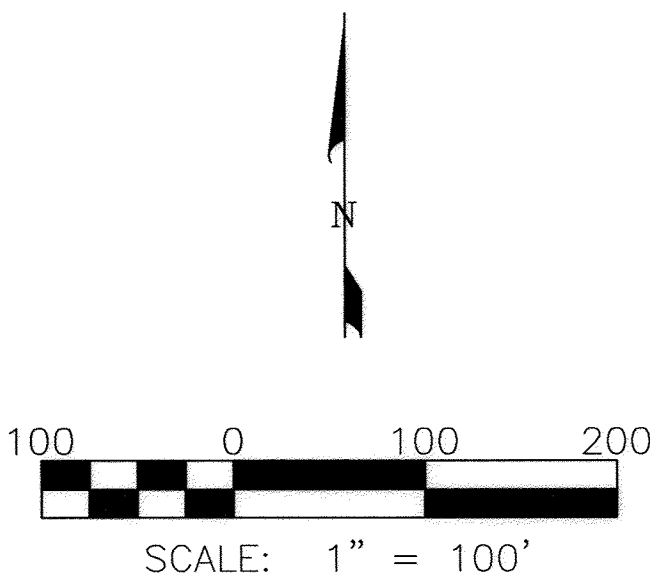
REVISION DATE: 05/25/08

CURVE	LENGTH	RADIUS
C2	229.94	229.94
C3	229.94	229.94
C4	229.94	229.94
C5	229.94	229.94
C6	202.42	165.00
C7	146.21	340.00
C8	246.78	290.00
C9	339.03	581.15
C10	119.21	425.00
C11	177.97	180.00
C12	248.11	418.89
C13	184.65	290.00
C14	191.33	140.00
C15	156.00	290.00
C16	194.11	290.00
C17	311.08	890.00
C18	244.35	890.00
C19	1.57	0.50
C20	87.15	50.00
C21	81.08	50.00
C22	72.95	50.00
C23	222.66	299.37
C24	208.31	389.99
C25	114.94	175.00
C26	110.32	175.00
C27	432.85	3039.95
C28	167.73	298.35
C29	470.28	1840.00
C30	212.43	940.00
C31	92.43	325.00
C32	72.06	325.00
C33	151.23	265.77
C34	329.67	1029.76
C35	311.93	401.66
C36	79.26	325.00
C37	135.92	50.00
C38	560.03	1689.98
C39	522.64	1340.01
C40	127.56	340.00
C41	95.02	339.98
C42	465.43	1790.03
C43	479.28	715.00
C44	669.21	1439.99
C45	156.32	1439.92
C46	182.40	290.00
C47	100.98	50.00
C48	88.63	50.00
C49	51.58	50.00
C50	1	
C51	180.10	340.00



**WINDSOR VALLEY RANCH SUBDIVISION  
PHASE 1 - AMENDED**

PORTIONS OF SECTIONS 26, 26, 27 & 28, T. 12 N., R. 25 E.  
G.&S.R.B.&M., APACHE COUNTY, ARIZONA



**LEGEND**

- Fd. REBAR W/ALUM CAP MARKED LS #42811
- Fd. REBAR W/PLASTIC CAP MARKED LS #42811
- SET #5 REBAR WITH PLASTIC CAP MARKED LS #15928
- CALCULATED CORNER NOTHING SET OR FOUND EXCEPT AS NOTED

STATE OF ARIZONA)  
COUNTY OF APACHE) SS.  
Fee No. 2008-4882  
I hereby Certify that the within instrument  
was filed and recorded.  
6-27-2008, at 10:55 AM  
in Book No. 39, Page 5  
Recorder  
By [Signature] Deputy

CERTIFICATION:  
I CERTIFY THAT THE SURVEY AS DRAWN ON THIS  
PLAT WAS COMPLETED BY ME OR UNDER MY DIRECT  
SUPERVISION AND THAT IT CONFORMS TO ALL  
MINIMUM STANDARDS AND SPECIFICATIONS. THIS  
CERTIFICATION APPLIES TO AMENDMENTS TO THE  
ORIGINAL DRAWING ONLY.



EXPIRES: 03/31/09

**ISAACSON ENGINEERING**  
P.O. Box 2924  
ST. JOHNS, ARIZONA 85936  
PHONE: (928) 337-9910 FAX: (928) 337-9905

**WINDSOR VALLEY RANCH  
SUBDIVISION PHASE 1 - AMENDED**

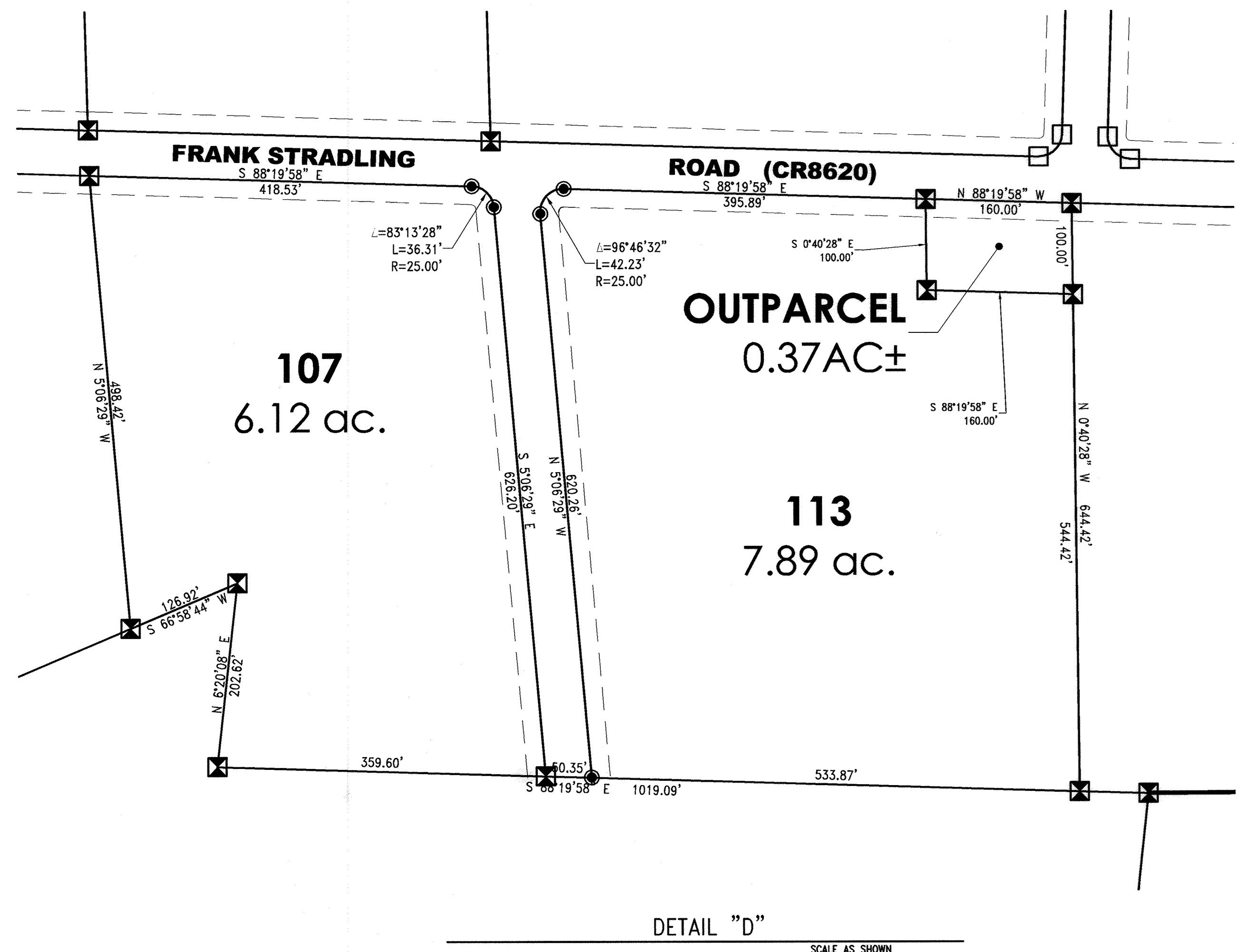
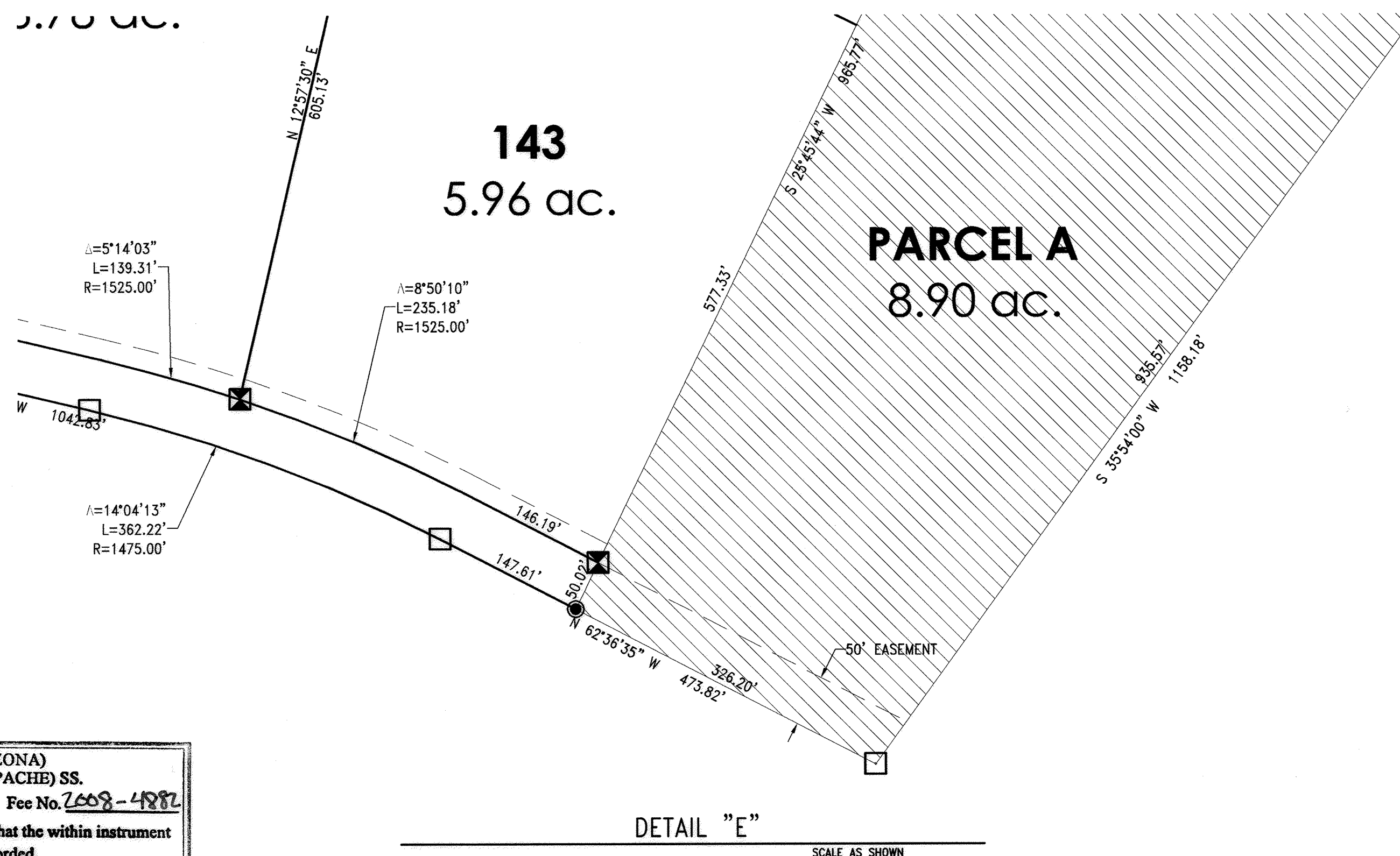
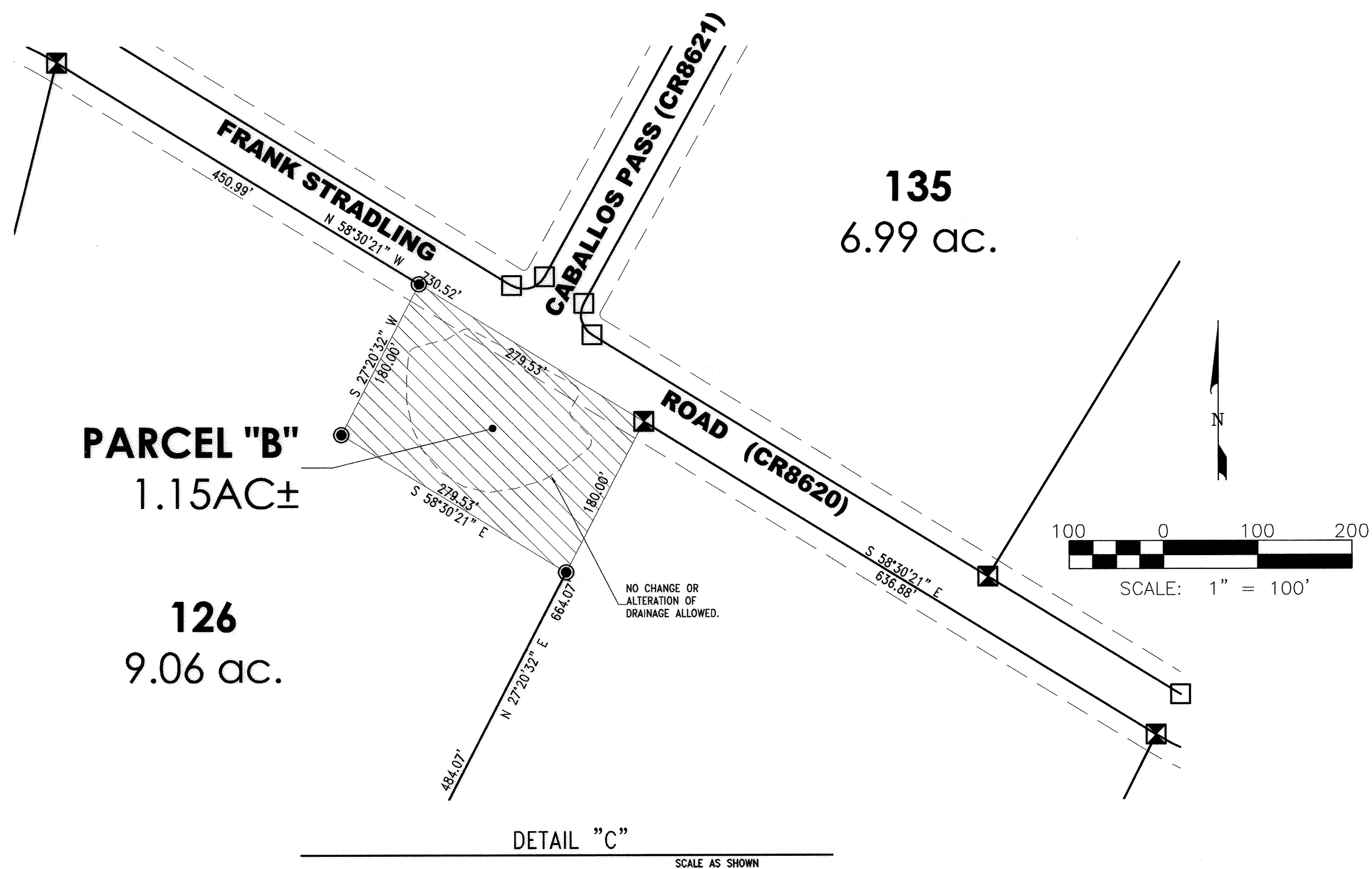
RECORD CREATED AT THE REQUEST OF:  
Arizona Land LLC

DATE: 05/25/08	FILE: 08Amended Plat 05-28-08.dwg	SHEET
REV. DATE:	Drawn By: D.S.JR	Reviewed By: K.J.
REV. DATE:		No. 5 of 6



# WINDSOR VALLEY RANCH SUBDIVISION PHASE 1 - AMENDED

PORTIONS OF SECTIONS 26, 26, 27 & 28, T. 12 N., R. 25 E.  
G.&S.R.B.&M., APACHE COUNTY, ARIZONA



## LEGEND

Fd. REBAR W/ALUM CAP  
MARKED LS #42811

Fd. REBAR W/PLASTIC CAP  
MARKED LS #42811

SET #5 REBAR WITH  
PLASTIC CAP MARKED  
LS #15928

CALCULATED CORNER  
NOTHING SET OR FOUND  
EXCEPT AS NOTED

CERTIFICATION:  
I CERTIFY THAT THE SURVEY AS DRAWN ON THIS  
PLAT WAS COMPLETED BY ME OR UNDER MY DIRECT  
SUPERVISION AND THAT IT CONFORMS TO ALL  
MINIMUM STANDARDS AND SPECIFICATIONS. THIS  
CERTIFICATION APPLIES TO AMENDMENTS TO THE  
ORIGINAL DRAWING ONLY.



EXPIRES: 03/31/09

**ISAACSON ENGINEERING**

P.O. Box 2924  
ST. JOHNS, ARIZONA 85936  
PHONE: (928) 337-9910 FAX: (928) 337-9905

**WINDSOR VALLEY RANCH  
SUBDIVISION PHASE 1 - AMENDED**

RECORD CREATED AT THE REQUEST OF:  
Arizona Land LLC

DATE: 05/25/08	FILE: 08Amended Plat 05-28-08.dwg	SHEET	6 of 6
REV. DATE:	Drawn By: D.S.J.R.	Reviewed By: K.J.I.	NO.
REV. DATE:			

STATE OF ARIZONA)  
COUNTY OF APACHE) SS.  
Fee No. 2608-4882  
I hereby Certify that the within instrument  
was filed and recorded.  
6-27-2008, at 10:55 AM  
in Book No. B9, Page 6  
Recorder  
By: Stephen R. Deputy