



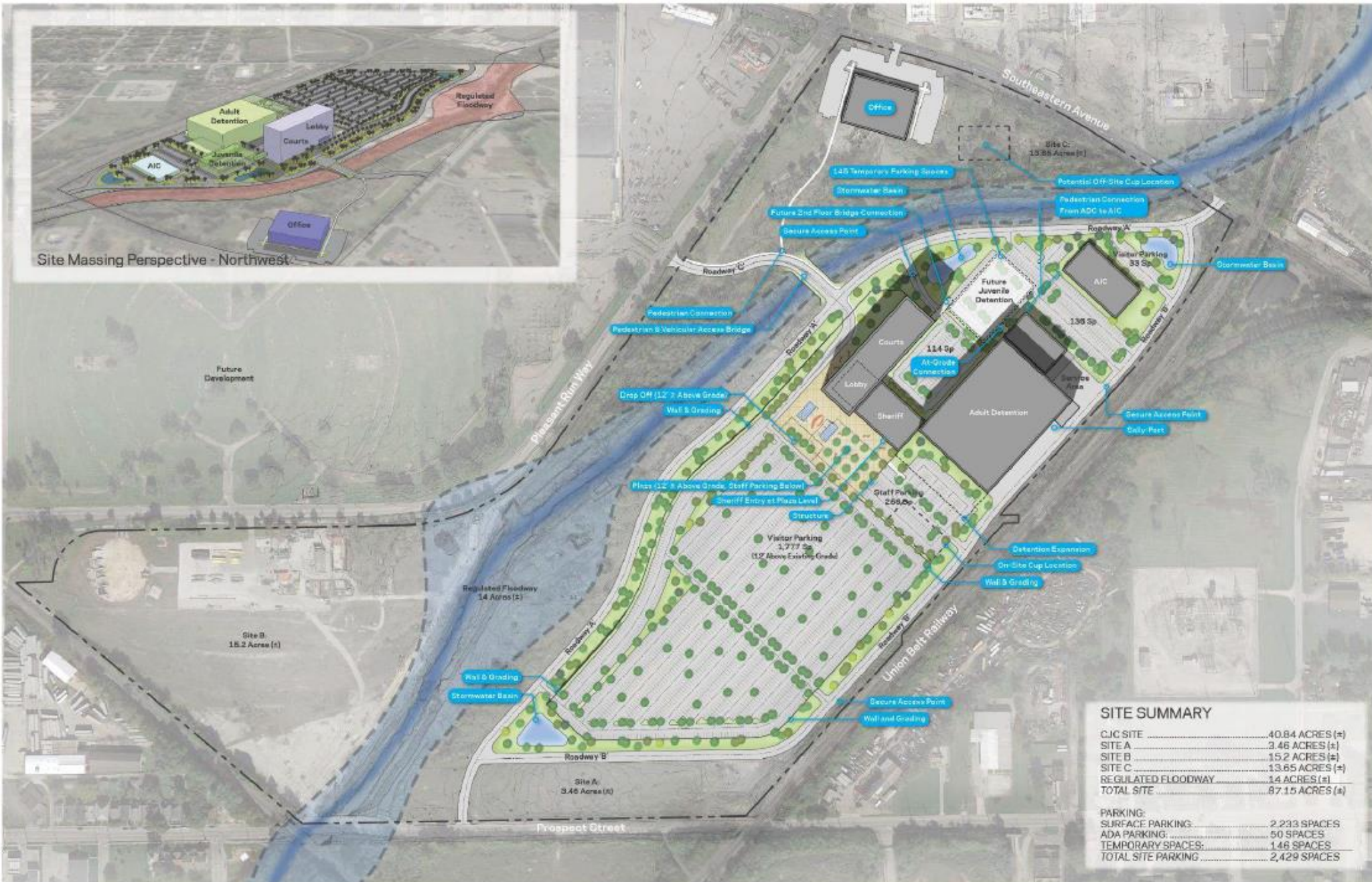
**INDIANAPOLIS-MARION COUNTY
COMMUNITY JUSTICE CAMPUS
PRELIMINARY DESIGN CONCEPTS**

DECEMBER 5, 2017





Site Massing Perspective - Northwest



SITE SUMMARY	
CJC SITE	40.84 ACRES (±)
SITE A	3.46 ACRES (±)
SITE B	15.2 ACRES (±)
SITE C	13.65 ACRES (±)
REGULATED FLOODWAY	14 ACRES (±)
TOTAL SITE	87.15 ACRES (±)
PARKING:	
SURFACE PARKING	2,293 SPACES
ADA PARKING	50 SPACES
TEMPORARY SPACES	148 SPACES
TOTAL SITE PARKING	2,429 SPACES



SITE SUMMARY

CJC SITE	40.84 ACF
SITE A	3.46 ACRE
SITE B	15.2 ACRE
SITE C	13.65 ACF
REGULATED FLOODWAY	14 ACRES

JUVENILE

- ADJACENCY TO COURT AND JAIL
- FOLLOWS SITE EDGE TO MAXIMIZE SITE UTILIZATION
- WEST SIDE ORIENTATION TO CREATE PUBLIC ACCESS

COURT

- ORIENTED TO WEST SIDE OF SITE
- MOST PUBLIC PROGRAM AND UTILIZATION
- VIEWS TO THE CITY
- BENT TO MAXIMIZE SITE AND MINIMIZE TRAVEL DISTANCE

SHERIFF

- ADJACENCY TO COURT AND JAIL
- PUBLIC ACCESS

JAIL

- EAST OF SITE TO MINIMIZE VIEWS AND TO CREATE SECURE SITE AREA.

AIC

- PUBLIC ACCESS
- MAXIMIZE SITE EDGE
- PEDESTRIAN CONNECTION TO JAIL

CUP

- CENTER OF SITE
- PRIVATE
- ACCESSIBLE

