



**INDIANAPOLIS-MARION COUNTY  
COMMUNITY JUSTICE CAMPUS  
CONTRACTOR OUTREACH**

---

**DECEMBER 4, 2017**



# Justice Reform: Key Goals

---

- Create a system, through intervention, treatment and prevention, that avoids incarcerating those who shouldn't be in jail, particularly for those with mental illness and/or addiction.
- Enact policies promoting accountability and transparency.
- Support a culture of innovation through data-driven decision-making in all criminal justice offices.
- Address outdated, inefficient criminal justice facilities- specifically our county jail system.

# Campus Facilities: 1

---

- **Consolidated County Jail | Adult Detention Center**
- **Delivery method: Design-Build**
  - Will replace the Arrestee Processing Center, Jail I, Jail II, and Hope Hall (inside CCB).
  - 2,700 general population beds, 300 specialty beds.

# Campus Facilities: 2

---

- **Consolidated County Courthouse**
- **Delivery method: Design-Build**
  - Consolidates Marion County Courts, namely Civil, Criminal, Juvenile, and Probate into one building.
  - HOK is working with the Judiciary on design criteria for the building based on assessments of modern caseloads and operations.

# Campus Facilities: 3

---

- **Assessment and Intervention Center**
- **Delivery method: Design-Bid-Build**
  - A mental health and addiction treatment clinic with co-located temporary housing unit to facilitate assessment and diversion.
  - Health & Hospital Corporation of Marion County will provide clinical staff to conduct assessments, provide care and referrals.

# Campus Facilities: 4

---

- **Professional Office Building**
- **Delivery method: Privately developed by Browning Investments**
- **Will include the Marion County Prosecutor's Office and the Marion County Public Defender Agency.**

# Campus Location- former Citizens Energy Group 2950 Prospect Street Gas Plant



# Project Goals and Design Principles

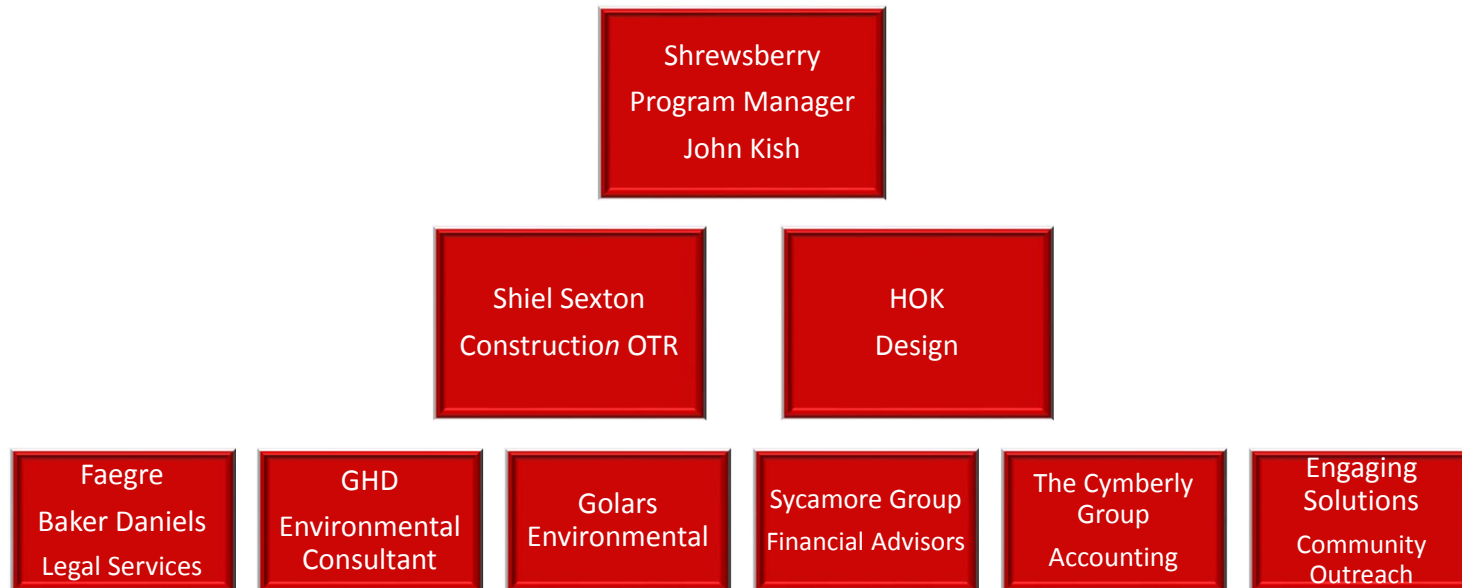
---

- Executing procurements that are lawful, ethical, transparent and competitive
- Managing Stakeholder interests in a way that provides an opportunity to succeed and results in substantial improvement to the criminal justice system in the City and the County
- Establishing a collaborative relationship with the Design-Builder that leverages the talent and innovation of the Design-Builder's Team to enhance performance as it relates to schedule, cost and future maintenance and operations
- Avoiding project disruptions and disputes
- Maximizing positive economic impact on the CJC campus, the City, the County and the broader Indianapolis Metropolitan Statistical Area



# City of Indianapolis Consultant Team

---



# HOK Consultant Team

Argo Consulting Engineers	ATS	Blood Hound	Camacho Associates	CE Solutions	DLZ Indiana
Durham Engineering	Fink Roberts & Petrie	Four Points Design Partners	Guidon	HCO	Heapy Engineering
Helmuth, Obata & Kassabaum	Hitchcock Design Group	HWC Engineering	Infrastructure Engineering	Lerch Bates	Phelco Technologies
Shen Milsom & Wilke	Synthesis	WDi Architecture	Webster	Wright & Company	Williams

# Project Status

---

- **Site Preparation**
  - **Design-Bid-Build Bids in March 2018**

# Design-Build Projects' Procurement

---

- **Consolidated County Jail | Adult Detention Center**
- **Consolidated County Courthouse**
  - **December-January: RFQs to be released**
  - **January-February: RFQs Proposals Due**
  - **April-May 2018: RFPs issued to “short-listed” teams for each package**
  - **June-August 2018: RFP Proposals Due**

# City Procurement Guidance

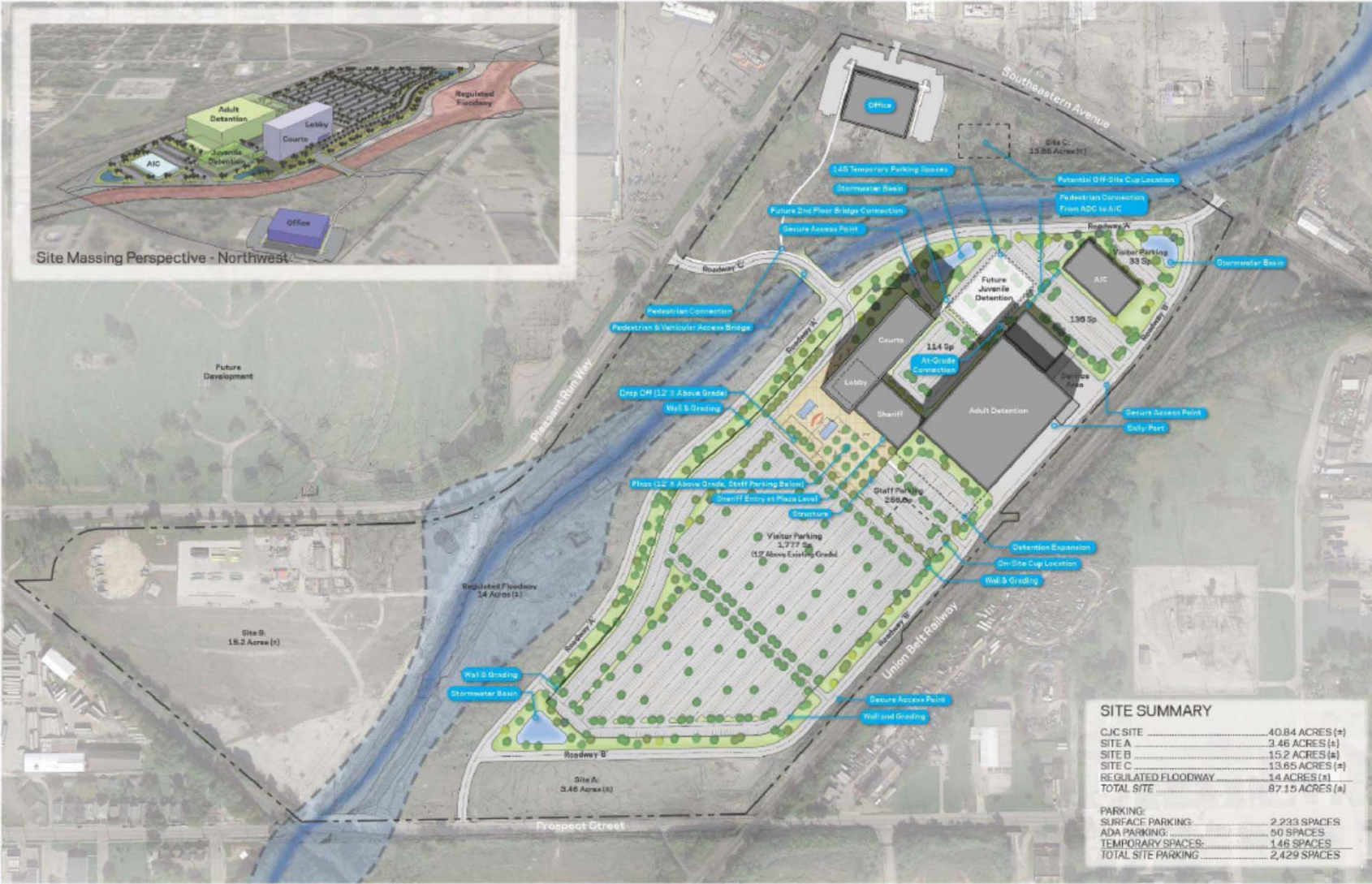
---

- Firms may submit on both RFQs
- Maximize M/W/V/DBE Participation
  - Current City Design Team XBE participation is 44%
- XBE participation will be scored
- Local economic impact will be scored

# Design-Bid-Build Project Procurement

---

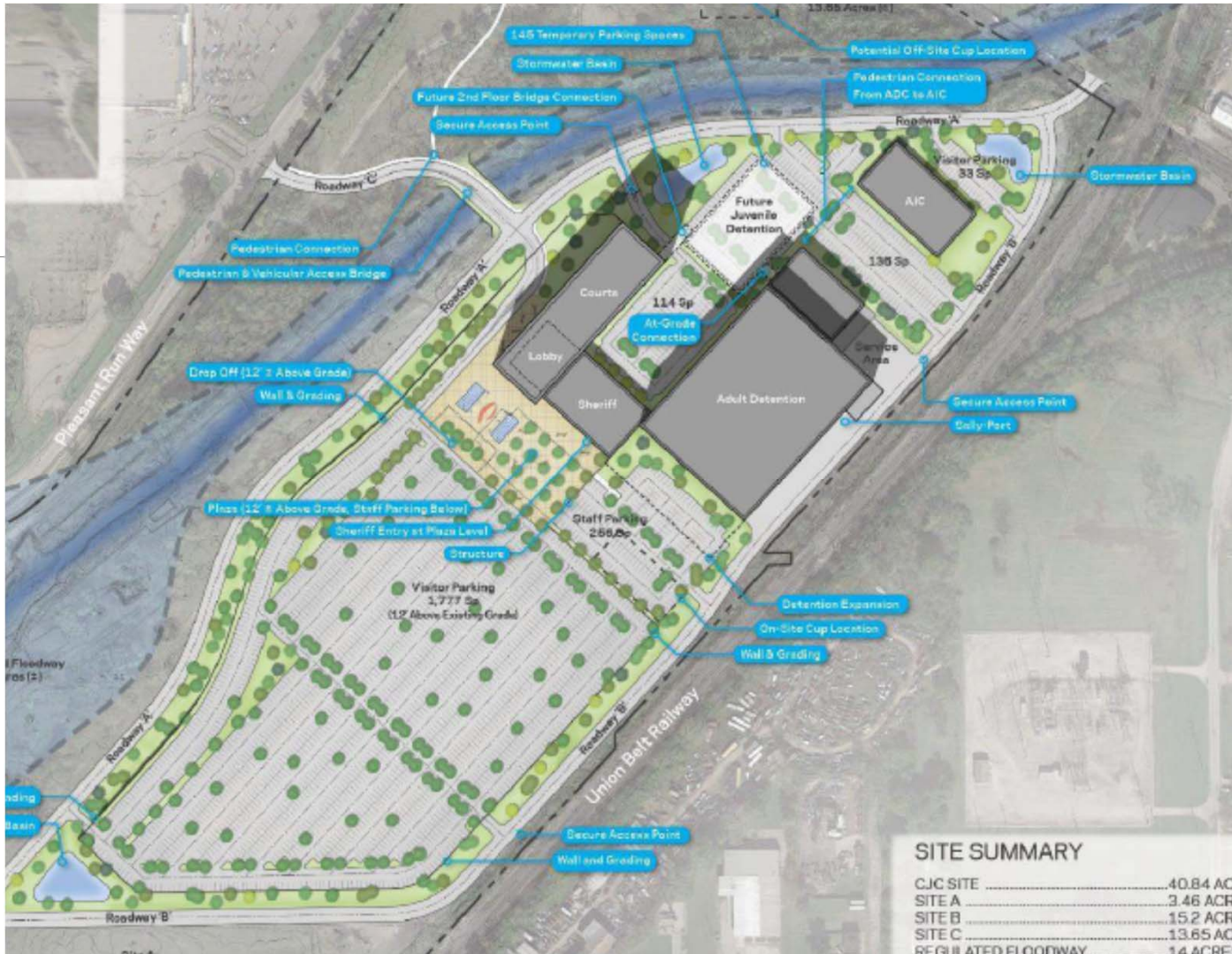
- **Assessment and Intervention Center**
- **TBD**



Site Massing Perspective - Northwest

SITE SUMMARY	
CJIC SITE	40.84 ACRES (+)
SITE A	3.46 ACRES (+)
SITE B	15.2 ACRES (+)
SITE C	13.85 ACRES (+)
REGULATED FLOODWAY	3.4 ACRES (+)
TOTAL SITE	87.15 ACRES (+)
PARKING:	
SURFACE PARKING	2,233 SPACES
ADA PARKING	50 SPACES
TEMPORARY SPACES:	148 SPACES
TOTAL SITE PARKING	2,429 SPACES





**SITE SUMMARY**

CJC SITE	40.84 ACR
SITE A	3.46 ACRE
SITE B	15.2 ACRE
SITE C	13.65 ACR
RESTRICTED FLOODWAY	1.4 ACRES



**JUVENILE**

- ADJACENCY TO COURT AND JAIL
- FOLLOWS SITE EDGE TO MAXIMIZE SITE UTILIZATION
- WEST SIDE ORIENTATION TO CREATE PUBLIC ACCESS

**COURT**

- ORIENTED TO WEST SIDE OF SITE
- MOST PUBLIC PROGRAM AND UTILIZATION
- VIEWS TO THE CITY
- BENT TO MAXIMIZE SITE AND MINIMIZE TRAVEL DISTANCE

**SHERIFF**

- ADJACENCY TO COURT AND JAIL
- PUBLIC ACCESS

**JAIL**

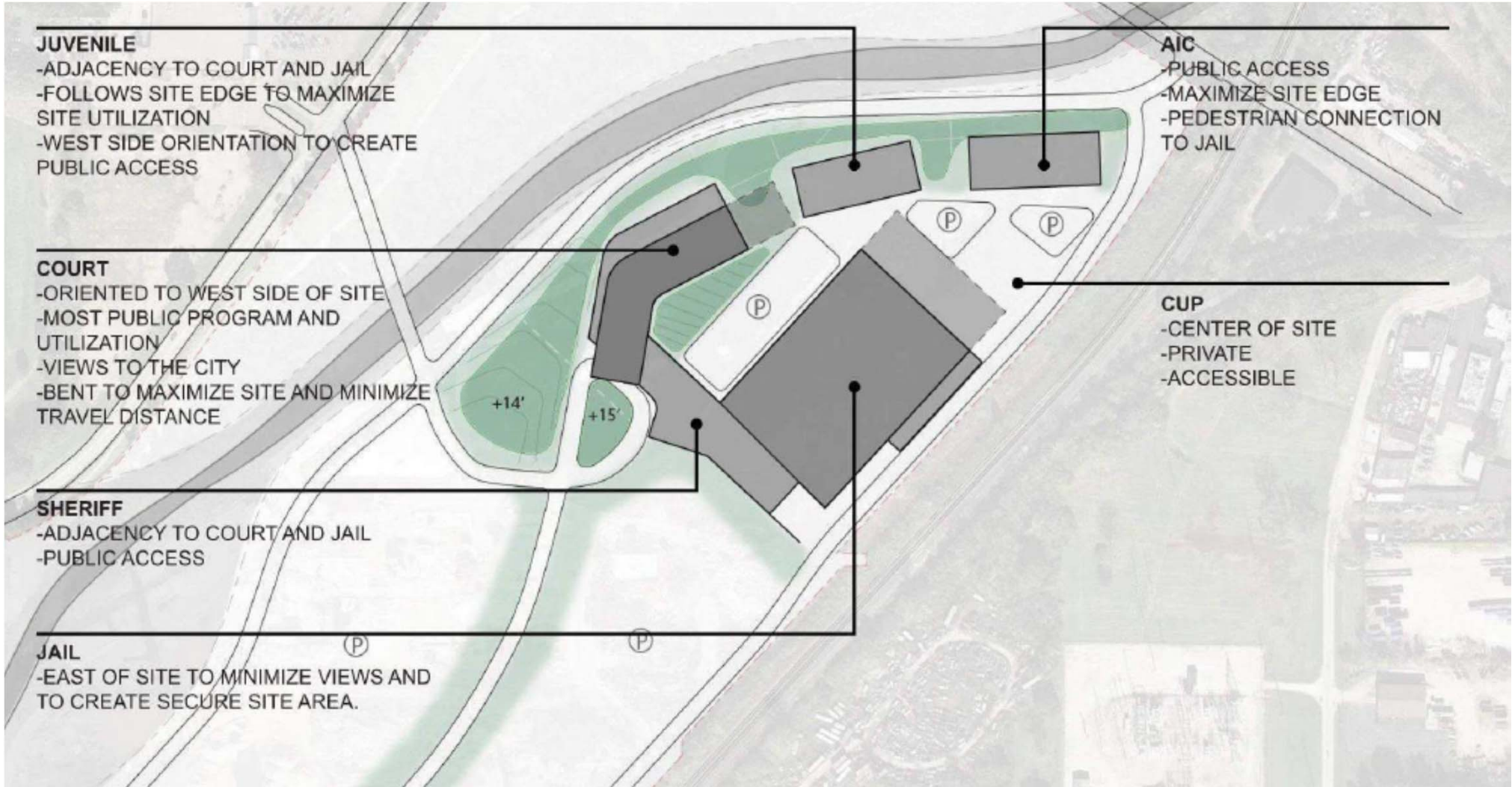
- EAST OF SITE TO MINIMIZE VIEWS AND TO CREATE SECURE SITE AREA.

**AIC**

- PUBLIC ACCESS
- MAXIMIZE SITE EDGE
- PEDESTRIAN CONNECTION TO JAIL

**CUP**

- CENTER OF SITE
- PRIVATE
- ACCESSIBLE



# Questions?

---

- If you have additional questions prior to the release of the RFQs, please email them to **[info@IndyCJC.com](mailto:info@IndyCJC.com)**
- Deadline to submit questions: **December 11**
- Responses will be posted **December 18** online at **[www.IndyCJC.com](http://www.IndyCJC.com)**



**Adjournment of Meeting**



**Contractor Networking to Begin**

---

**Thank You!**

