



**INDIANAPOLIS-MARION COUNTY
COMMUNITY JUSTICE CAMPUS
CONTRACTOR OUTREACH**

DECEMBER 4, 2017



Justice Reform: Key Goals

- Create a system, through intervention, treatment and prevention, that avoids incarcerating those who shouldn't be in jail, particularly for those with mental illness and/or addiction.
- Enact policies promoting accountability and transparency.
- Support a culture of innovation through data-driven decision-making in all criminal justice offices.
- Address outdated, inefficient criminal justice facilities- specifically our county jail system.

Campus Facilities: 1

- **Consolidated County Jail | Adult Detention Center**
- **Delivery method: Design-Build**
 - Will replace the Arrestee Processing Center, Jail I, Jail II, and Hope Hall (inside CCB).
 - 2,700 general population beds, 300 specialty beds.

Campus Facilities: 2

- **Consolidated County Courthouse**
- **Delivery method: Design-Build**
 - Consolidates Marion County Courts, namely Civil, Criminal, Juvenile, and Probate into one building.
 - HOK is working with the Judiciary on design criteria for the building based on assessments of modern caseloads and operations.

Campus Facilities: 3

- **Assessment and Intervention Center**
- **Delivery method: Design-Bid-Build**
 - A mental health and addiction treatment clinic with co-located temporary housing unit to facilitate assessment and diversion.
 - Health & Hospital Corporation of Marion County will provide clinical staff to conduct assessments, provide care and referrals.

Campus Facilities: 4

- **Professional Office Building**
- **Delivery method: Privately developed by Browning Investments**
- **Will include the Marion County Prosecutor's Office and the Marion County Public Defender Agency.**

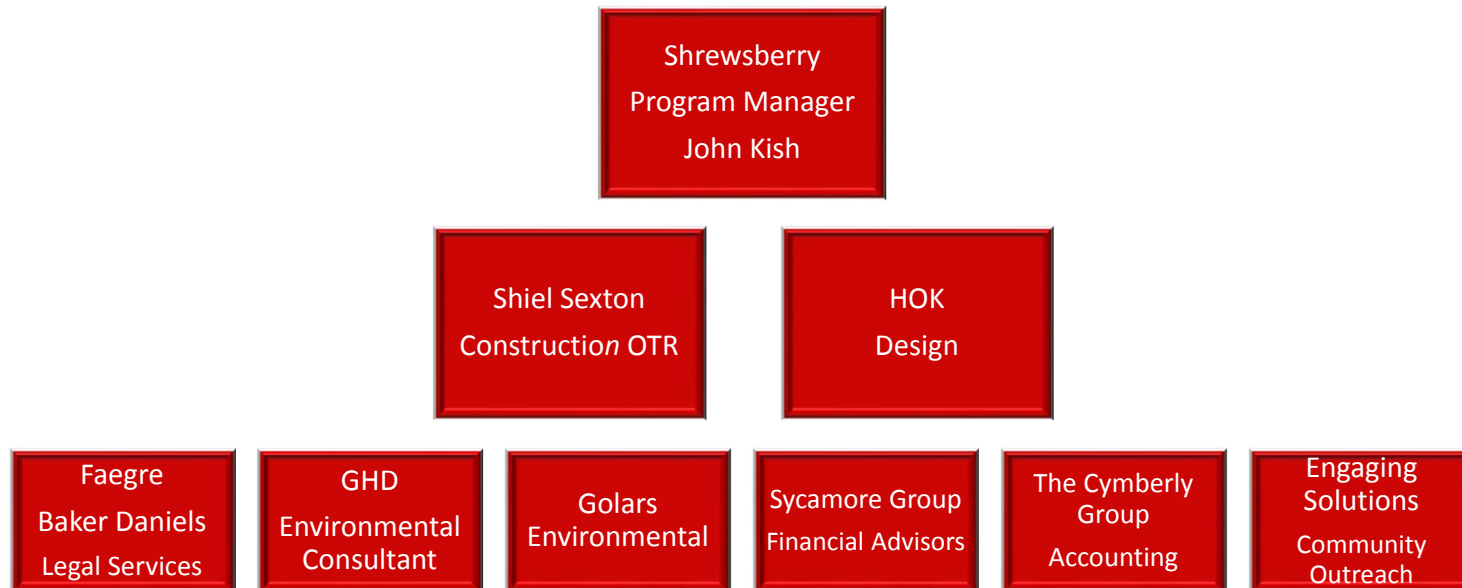
Campus Location- former Citizens Energy Group 2950 Prospect Street Gas Plant



Project Goals and Design Principles

- Executing procurements that are lawful, ethical, transparent and competitive
- Managing Stakeholder interests in a way that provides an opportunity to succeed and results in substantial improvement to the criminal justice system in the City and the County
- Establishing a collaborative relationship with the Design-Builder that leverages the talent and innovation of the Design-Builder's Team to enhance performance as it relates to schedule, cost and future maintenance and operations
- Avoiding project disruptions and disputes
- Maximizing positive economic impact on the CJC campus, the City, the County and the broader Indianapolis Metropolitan Statistical Area

City of Indianapolis Consultant Team



HOK Consultant Team

Argo Consulting Engineers	ATS	Blood Hound	Camacho Associates	CE Solutions	DLZ Indiana
Durham Engineering	Fink Roberts & Petrie	Four Points Design Partners	Guidon	HCO	Heapy Engineering
Helmuth, Obata & Kassabaum	Hitchcock Design Group	HWC Engineering	Infrastructure Engineering	Lerch Bates	Phelco Technologies
Shen Milsom & Wilke	Synthesis	WDi Architecture	Webster	Wright & Company	Williams

Project Status

- **Site Preparation**
 - **Design-Bid-Build Bids in March 2018**

Design-Build Projects' Procurement

- **Consolidated County Jail | Adult Detention Center**
- **Consolidated County Courthouse**
 - **December-January: RFQs to be released**
 - **January-February: RFQs Proposals Due**
 - **April-May 2018: RFPs issued to “short-listed” teams for each package**
 - **June-August 2018: RFP Proposals Due**

City Procurement Guidance

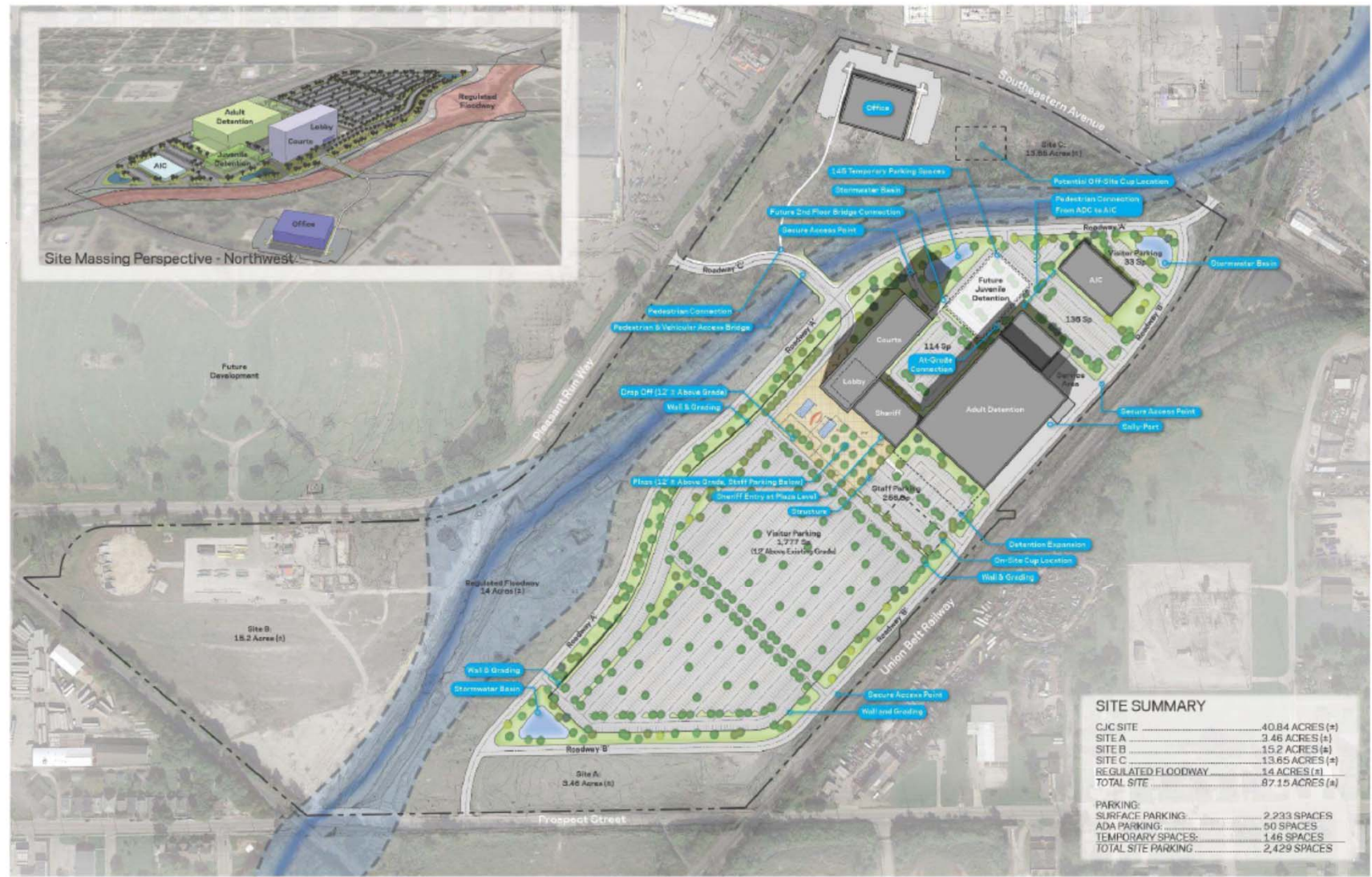
- Firms may submit on both RFQs
- Maximize M/W/V/DBE Participation
 - Current City Design Team XBE participation is 44%
- XBE participation will be scored
- Local economic impact will be scored

Design-Bid-Build Project Procurement

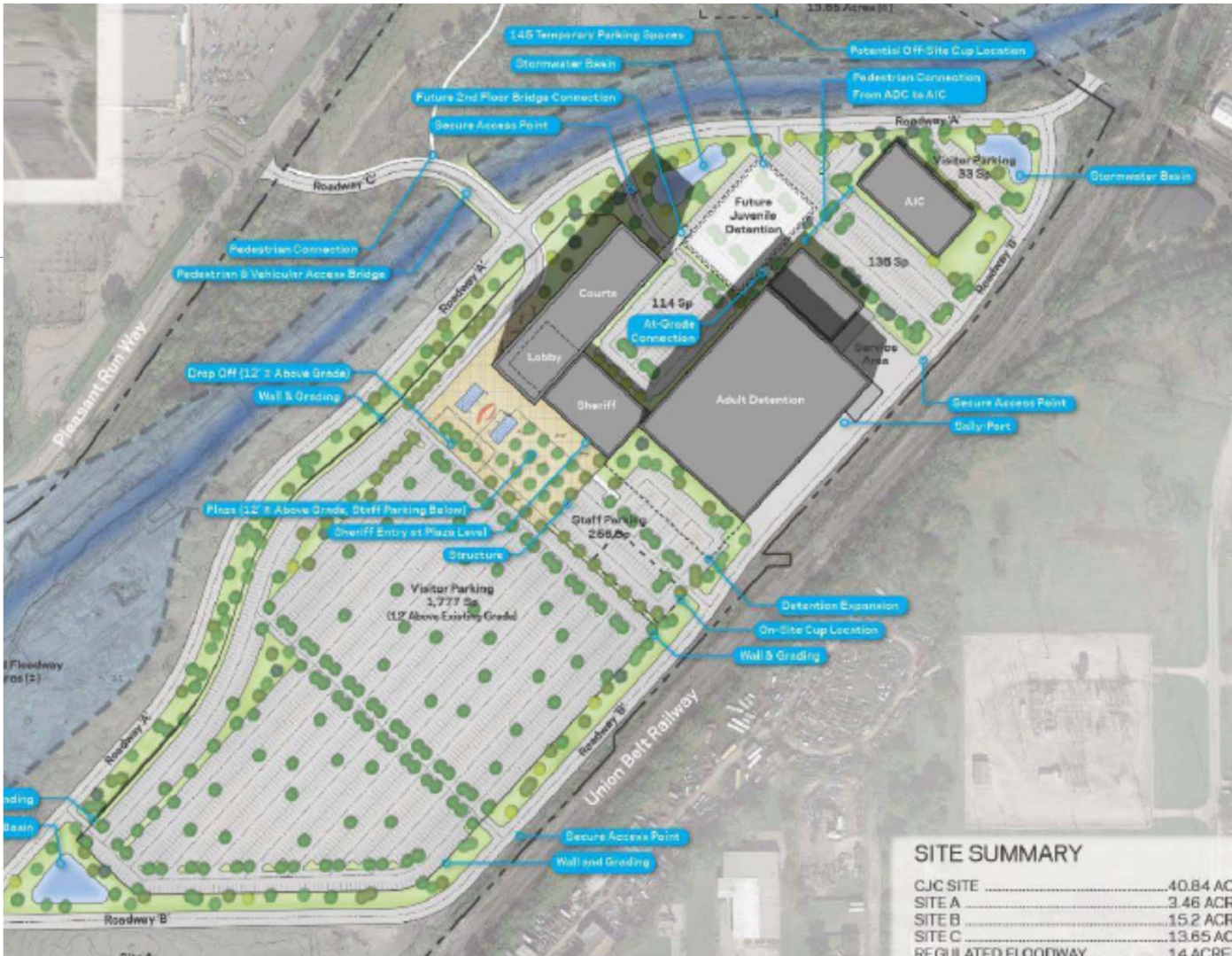
- **Assessment and Intervention Center**
- **TBD**



Site Massing Perspective - Northwest



SITE SUMMARY	
CJIC SITE	40.84 ACRES (+)
SITE A	3.46 ACRES (+)
SITE B	15.2 ACRES (+)
SITE C	13.85 ACRES (+)
REGULATED FLOODWAY	3.4 ACRES (+)
TOTAL SITE	87.15 ACRES (+)
PARKING:	
SURFACE PARKING	2,233 SPACES
ADA PARKING	50 SPACES
TEMPORARY SPACES	148 SPACES
TOTAL SITE PARKING	2,429 SPACES



JUVENILE

- ADJACENCY TO COURT AND JAIL
- FOLLOWS SITE EDGE TO MAXIMIZE SITE UTILIZATION
- WEST SIDE ORIENTATION TO CREATE PUBLIC ACCESS

COURT

- ORIENTED TO WEST SIDE OF SITE
- MOST PUBLIC PROGRAM AND UTILIZATION
- VIEWS TO THE CITY
- BENT TO MAXIMIZE SITE AND MINIMIZE TRAVEL DISTANCE

SHERIFF

- ADJACENCY TO COURT AND JAIL
- PUBLIC ACCESS

JAIL

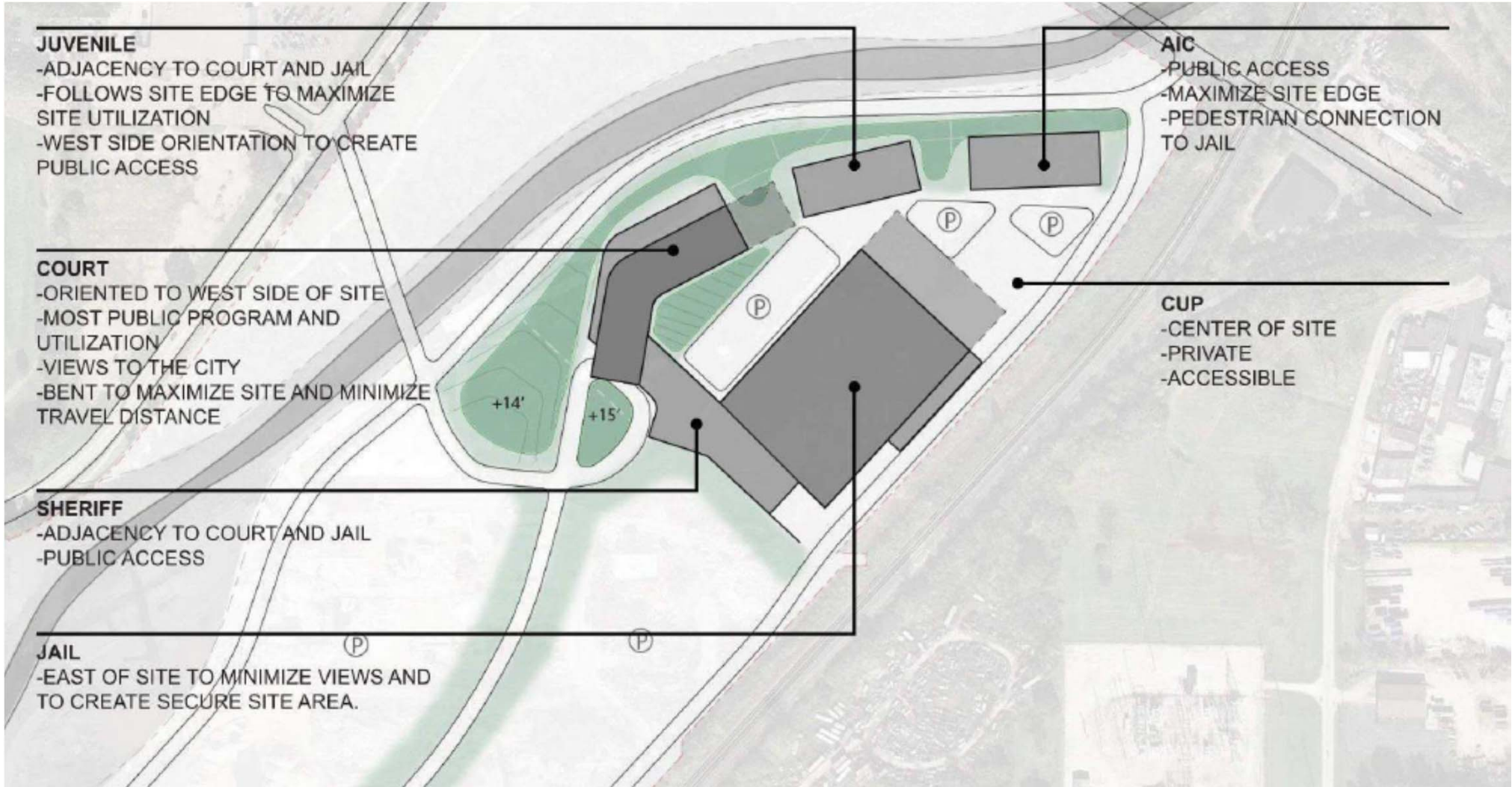
- EAST OF SITE TO MINIMIZE VIEWS AND TO CREATE SECURE SITE AREA.

AIC

- PUBLIC ACCESS
- MAXIMIZE SITE EDGE
- PEDESTRIAN CONNECTION TO JAIL

CUP

- CENTER OF SITE
- PRIVATE
- ACCESSIBLE



Questions?

- If you have additional questions prior to the release of the RFQs, please email them to **info@IndyCJC.com**
- Deadline to submit questions: **December 11**
- Responses will be posted **December 18** online at **www.IndyCJC.com**



Adjournment of Meeting



Contractor Networking to Begin

Thank You!

