



Secure Your Airspace

DroneFox NS

Detect. Identify. Mitigate.



Do you know when a drone is present in your airspace? How do you distinguish a **dangerous** drone from an **authorized** drone?

DroneFox NS has been designed for increased capability, durability, and mobility with multiple options for **safe** and **discreet** mitigation.



16.8" x 7.3" x 25.0"

Drone Name:
Construction Drone
Drone Label:
Known/Friendly

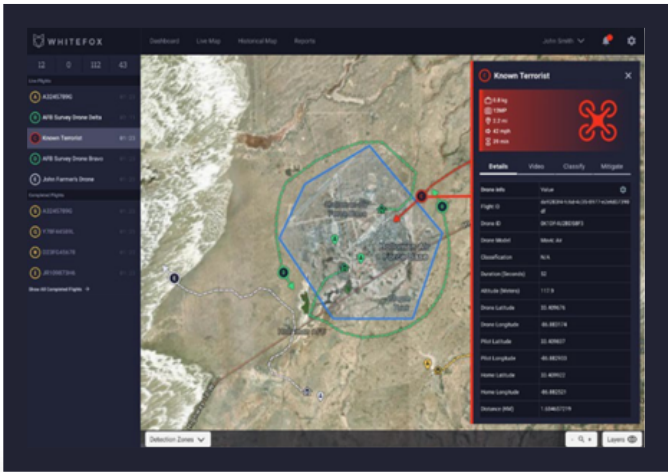


- Field-Proven Reliability
- Open extensible architecture provides unmatched scalability and growth
- User-configurable to support multiple missions
- Simple integration with layered CUAS and C2 systems
- Secure web-enabled UI allows for remote monitoring and control

DroneFox NS | Key Features



- Detects drones at a nominal range of 5 km (8 – 10 km for most common drones)
- Identifies specific drone make, model, and protocol
- Creates a unique identifier for each drone, allowing for pattern-of-life analysis over the entire history of detection for each drone
- Locates and tracks drones, home points, and pilots
- Reports drone altitude, speed, and location in real-time
- Alerts operators or automatically mitigates with user-defined rules and zones to match your operational parameters
- Mitigates threats safely with selective low-collateral effect
- Takeover, narrowband jamming, and swarm defense options
- Data recording features enable secure mission data collection and playback
- IP65 and wide temperature ratings for use anywhere in the world
- Set up and operational in under 30 minutes
- New capabilities enabled through software upgrades to meet new threats without the need for new hardware
- Multiple systems can be networked together



Drone Name:
Hostile Drone

Drone Label:
Known/Threat



DroneFox NS | Technical Specifications

Detection Range	5 km nominal
Mitigation Range	1 km nominal
Device Type	Modular RF Receiver and Transmitter
Refresh Rate	< 3 seconds for most drones
Frequency Bands	ISM and GNSS bands (programmable from 70 MHz to 6 GHz)
L x W x H / Weight	42.6 cm x 18.5 cm x 63.5 cm (16.8" x 7.3" x 25.0") / 38 kg (84 lbs.)
Ingress Protection Rating	IP65
Operating Temperature	-20 °C to +55 °C
Power Supply	AC 100 – 240 V at 50 – 60 Hz
Power Consumption	360 W
Connectivity	Ethernet
Configuration, Operation, and Alerts	Browser-based user interface available on any device with a browser including tablets and phones
Software Updates	Quarterly updates available over network or local
Multiple Antenna Configurations	Antenna array suitable for fixed mast or tripod mount Custom fixed or mobile designs to support a variety of installation applications



WHITEFOX