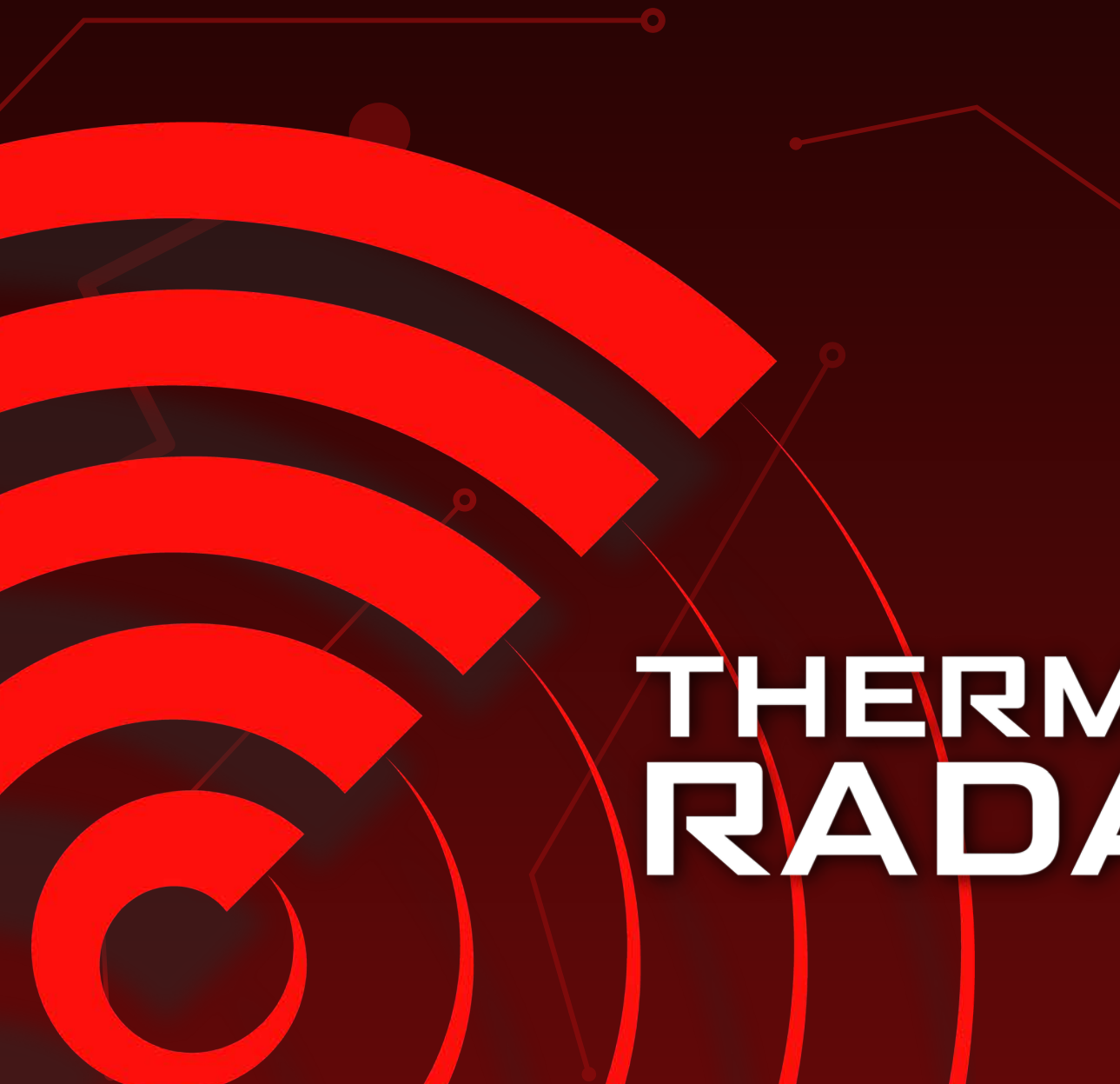
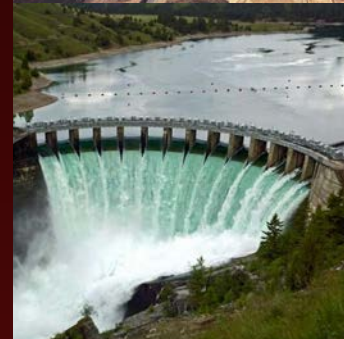


360° PERIMETER DETECTION

CONTINUOUS & COST-EFFECTIVE



THERMALTM RADAR



THE THERMAL RADAR™ DIFFERENCE

- Provides slew-to-cue functionality to an integrated PTZ
- Edge analytics for human, vehicle and fire detection
- Geospatial location-based detection alerts
- Patent-pending GUI feed displaying full 360° coverage area
- Independent customizable areas of interest / detection zones
- Passive thermal detection and surveillance solution
- No export license required for most international applications
- Reduces device count, infrastructure and licensing costs
- Proprietary adaptive analytics result in low false-positive alerts
- Simultaneous detection of multiple targets

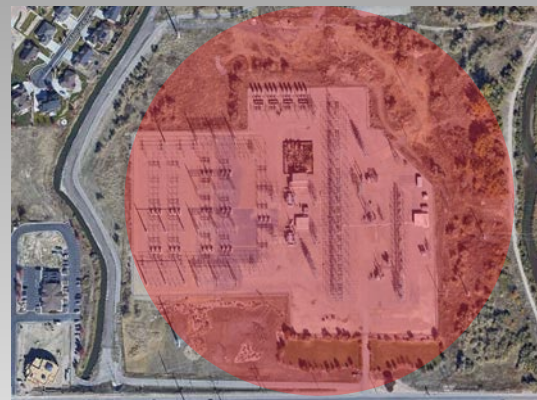
Traditional Perimeter Coverage

8 Fixed Cameras



Thermal Radar™ Coverage

1 Thermal
Radar™



Thermal Radar™ provides superior perimeter protection. Decreasing the costs of installation, monitoring, licensing, and maintenance.

INTEGRATIONS

Hydra™ combines Thermal Radar™ with a PTZ for unparalleled situational awareness



Hydra™ Integrated PTZs

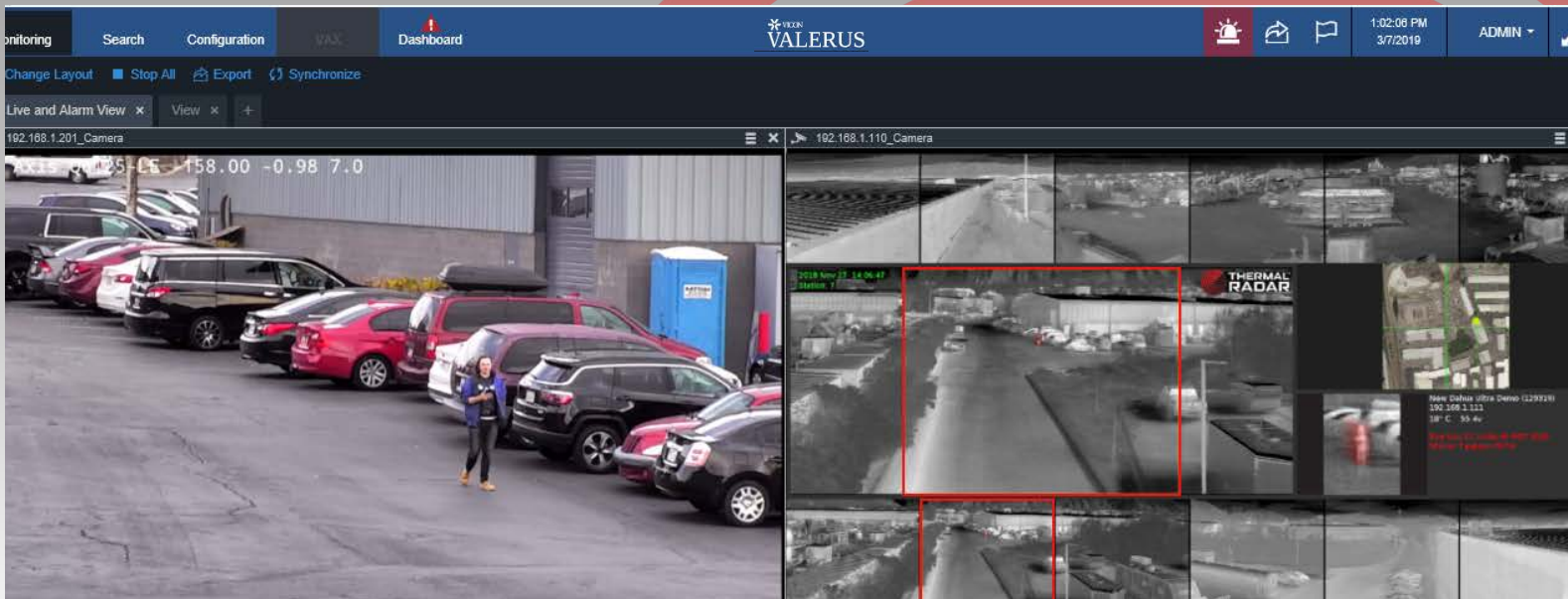
- Hanwha
- Bosch
- Vicon
- Axis
- Panasonic
- Sony
- Dahua
- Hikvision



Integrated Platforms

- Valerus
- Genetec
- Milestone
- Avigilon
- Exacq
- Digital Watchdog
- Wisenet
- Redvision
- ONSSI
- NiceVision
- Dahua
- Network Optix

MONITORING EXAMPLE IN VALERUS VMS



DEPLOYMENT OPTIONS



sales@thermalradar.com | 801.762.6800 | thermalradar.com

©Thermal Imaging Radar, LLC. All Rights Reserved. THERMAL RADAR, and HYDRA are trademarks of Thermal Imaging Radar, LLC. All other company names and products are trademarks or registered trademarks of their respective companies.