

Gir.arch is an architectural studio based in Turkey, founded in 2009.

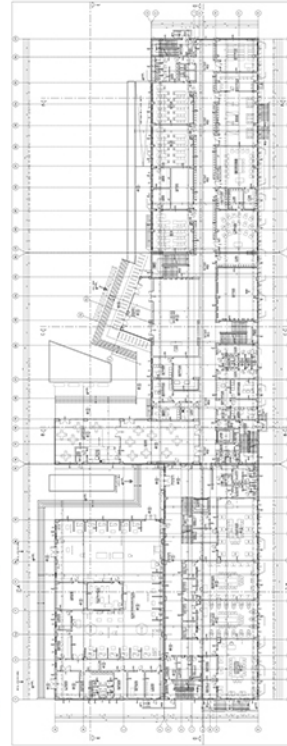
The studio began its journey in Istanbul in 2004, initially focusing on residential projects. Between 2015 and 2020, Gir.arch expanded its scope to public architecture, completing a variety of educational institutions, industrial facilities, utility buildings, a soccer stadium, community centers, and urban design projects.

Since 2020, Gir.arch has embraced a more international focus. During the early years of the pandemic, the studio led several U.S.-based residential projects, including the landscape and community park design for an 800+ home development in Lubbock, Texas, and a custom lake house in Modoc, South Carolina. In recent years, additional remodeling and new-build projects have followed in states such as Kentucky, Rhode Island, Georgia, and New Jersey.

Meanwhile, since 2021, Gir.arch has maintained a strong ongoing presence in Australian residential architecture. As of June 2025, the studio had initiated over 240 projects across various states, primarily involving single-family homes, secondary dwellings, major renovations, and home extensions. Each project is guided from concept to approval with a focus on regulatory alignment and tailored design solutions.

Oz currently oversees all design work across Australia and the U.S., leading a remote international team spanning Turkey, Australia, the U.S., India, and Canada. Gir.arch continues to approach every project—regardless of scale or location—with the same dedication, clarity, and craft it was founded upon.

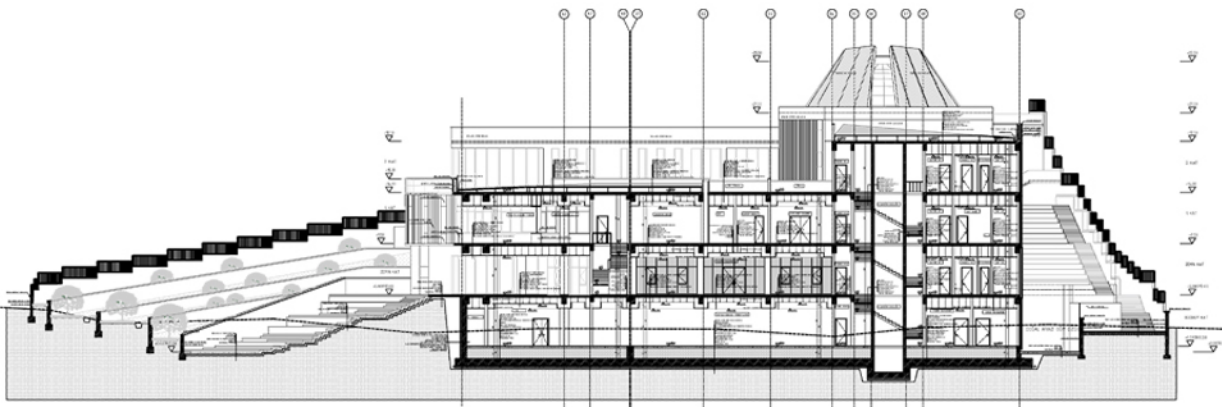
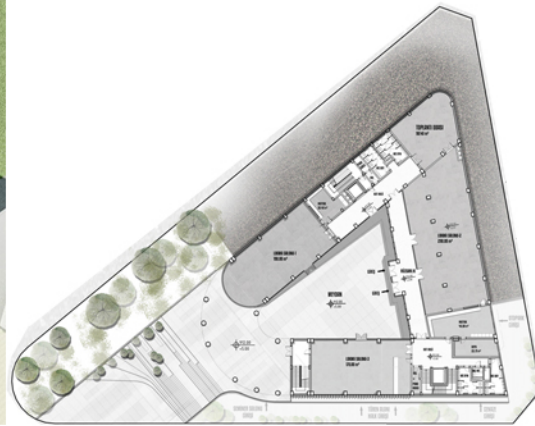
I N T R O D U C T I O N



Vocational High School w/24 Classrooms, 2016



* Amateur Sports Clubs Complex Project, 2017



* Community Centre in Turkey, 2019

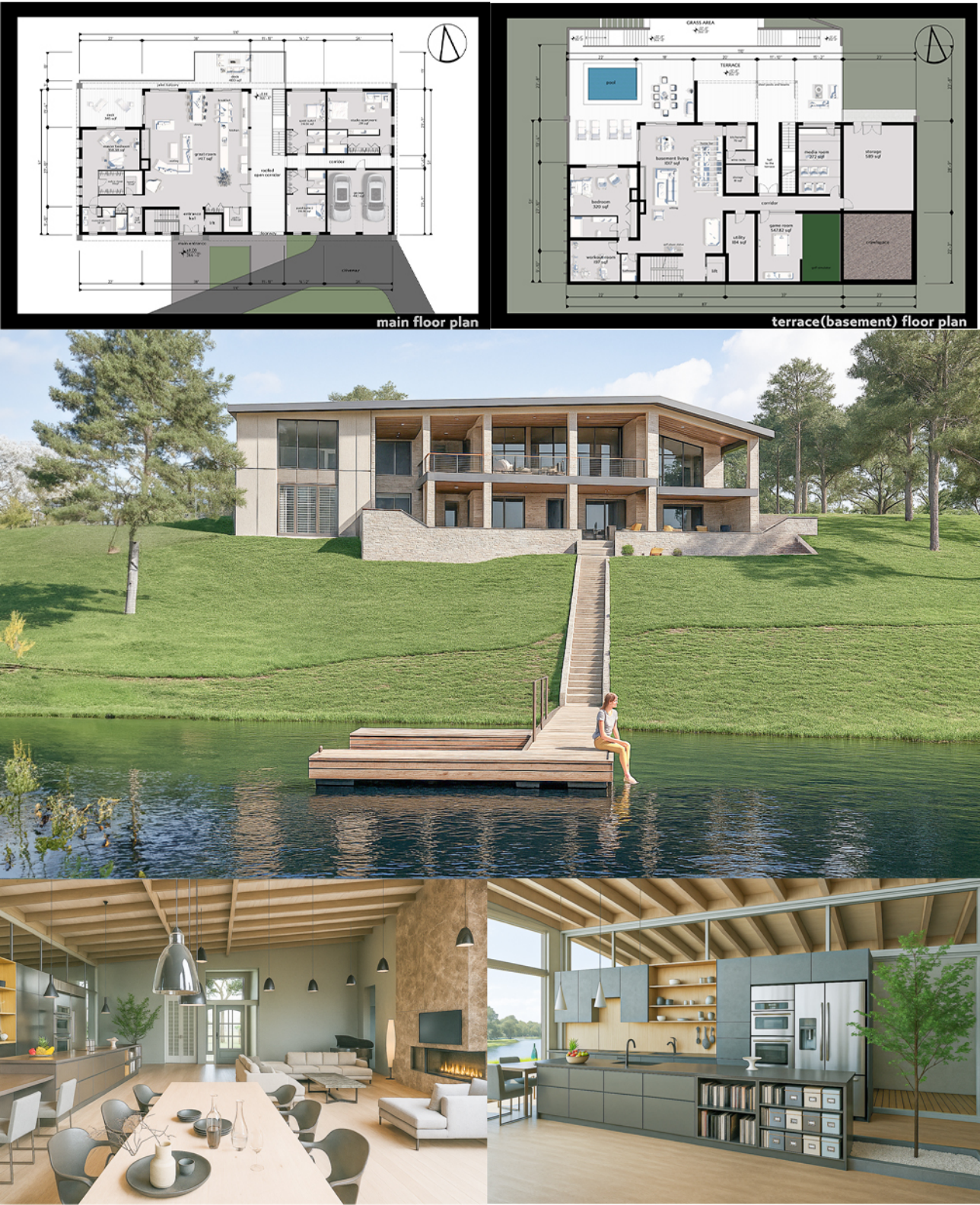


Urban Design in Southern Turkey, 2020

REFERENCE
WORKS



Community Park & Landscape Design in Lubbock, TX, 2020



Lake House Design in Modoc,SC, 2021



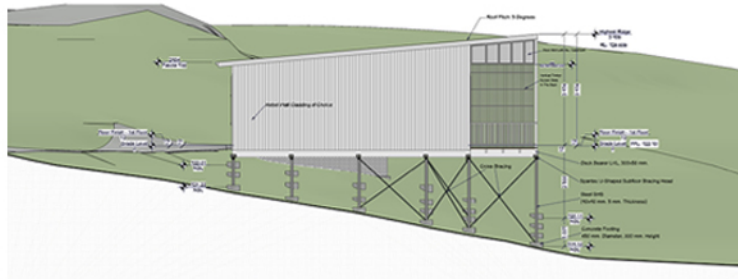
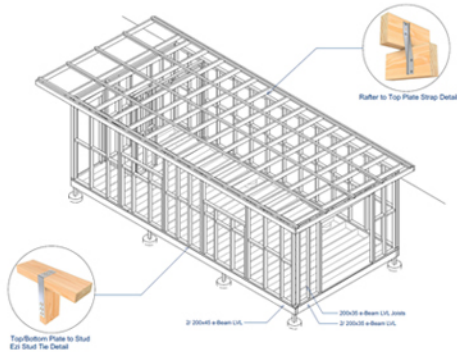
Boutique Hotel Design in ELK Rapids, MI



Various Apartment Designs
with Steel Components in Michigan, 2021

R
E
F
E
R
E
N
C
E

W
O
R
K
S



REFERENCE
WORKS

Some examples from Australian residential designs:
more than 200 designs as of October 2024.