

# BARCO.

| BUILD RENOVATE MAINTAIN  
LEVEL 1 BBBEE COMPANY

Proud Service Providers to | Direct Line - Tel: 068 575 0198



2023



## About Us - BARCO

### Mission & Vision

BARCO Service Providers was founded in 2012 to fulfil the mandate of black economic empowerment in the construction, facilities maintenance and building sectors in South Africa. Our goal is to create equal opportunities for the previously disadvantaged professionals within this sector. We strive to render a world class service and work excellence in all manufacturing, delivery and installation aspects.

**As all our industries are constantly evolving and developing at a rapid pace, we pride ourselves in meeting all these demanding challenges with continual research and development in the relevant industries.**

As a **BBBEE** company, our staff is committed to providing exceptional expertise and service to our respective clients and accounts. We pride ourselves with efficiency and quality of the highest standards in the fastest possible manner.

Our procurement and employment policies are also in line with all BBBEE standards, and we are committed to changing and helping the lives of ordinary South Africans and their communities.

**BARCO. prides itself in being a Level 1 BBBEE Company.**

### Why BARCO Solutions ?

At BARCO Solutions your project matters to us, which is why at BARCO Solutions we go the extra mile to offer you premium quality workforce, services and solutions.

Our skilled workforce of reliable professionals is on hand around the clock to provide our clients with a full-on turnkey solution to any project.

We use only the most highly skilled tradesmen in-house.

Proud Service Providers to

**Pick n Pay**

**EXCELLERATE**

**JHI**

**broll**  
PROPERTY GROUP

**ATTACQ**  
INVEST • DEVELOP • GROW

LEVEL 1  
BBBEE  
COMPANY

# OUR

# SERVICES

## BUILD

- GENERAL CONSTRUCTION
- WHITE BOX / REINSTATEMENT
- LSF ROOF TRUSSES / MEZZANINE FLOORS
- FIRE WALLS / BOUDNARY WALLS
- FRAMING / PARTITIONING
- SEAMLESS / BOX GUTTERS SUPPLY
- WAREHOUSE ROOF SHEETING / BULLNOSE

## RENOVATE

- TURNKEY RONOVAION
- FAÇADE UPGRADE
- PROJECT MANAGEMENT
- GENERAL ALTERATIONS
- BATHROOM RENOVATOIN
- KITCHEN RENOVATION
- HOUSE FLIPPING SPECIALIST

## MAINTAIN

- PAINTING & COATINGS
- SURFACING TILE / PAVE
- RECURRING SERVICES
- STEEL FABRICATION
- CORROSION PREVENTION
- FACILITY MAINTENANCE
- CONCRETE REPAIR

Proud Service Providers to

**Pick n Pay**

**EXCELLERATE**

**JHI**

**broll**  
PROPERTY GROUP

**ATTACQ**  
INVEST • DEVELOP • GROW

LEVEL 1  
**BBEE**  
COMPANY

# Why Seamless Protective Coatings

## Polymer Coatings ?

- Polyurea is a seamless spray on Coat and fast curing allowing quick turnaround and load bearing after one hour;
- Can be applied in a wide range of humid conditions, without affecting the application of the product because it is moisture tolerant;
- Are spray applied ensuring even and continuous coverage providing a seamless sealant;
- Have good adhesion properties that can be applied to a wide range of substrates;
- Have good elongation and high crack-bridging properties that allows for movement of the substrate;
- Have high hydrolysis and ageing resistance properties which allows application in high moisture conditions resulting in a long-lasting waterproof sealant;
- Have good abrasion and impact resistance properties to withstand harsh conditions;
- Feature good chemical resistance properties offering a specialized chemical sealant to withstand high acid and corrosive environments;
- Are solvent free / VOC free / Catalyst free

## PROPERTIES

**Abrasion Resistance**

**Impact Resistant**

**Corrosion Protection**

**Chemical Resistant**

**Seamless Coating**

**Structural Enhancement**



## APPLICATIONS

**Concrete Flat Roof**

**Corrugated Roof**

**IBR Roof & Clip lock**

**Box Gutters**

**Parking Decks**

**Expansion Joints**

**Demarcation lines**

**Demarcation Walkways**

**PU Insulation Foam**

**Roof Ridge & Valley**

**Industrial Coatings**

**Pipeline Coatings**

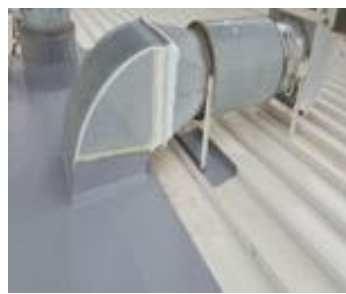
**Floor Coatings**

**Vessel Coatings**

Polyurea & Polyurethane coatings TDS & MSD'S Sheets are available and based on applicator's assessment site visit of each application individually.

## Sealant / Coatings

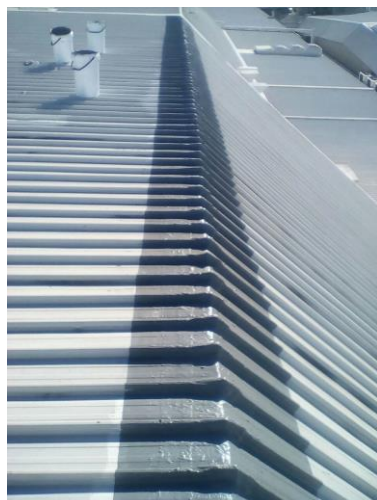
- Ventilation Ducting
- Extractor Ducts
- Tornado / Whirly birds
- Smoke Vents





# Sealant / Coatings

- Parapet walls
- Roof Ridge
- Roof Sheeting Repair
- Roof Flashings





## Seamless Coatings

- Expansion Joints
- Drain & Downpipes
- Expansion Wall
- High Traffic areas
- Non-Slip Surfaces
- Bund Walls



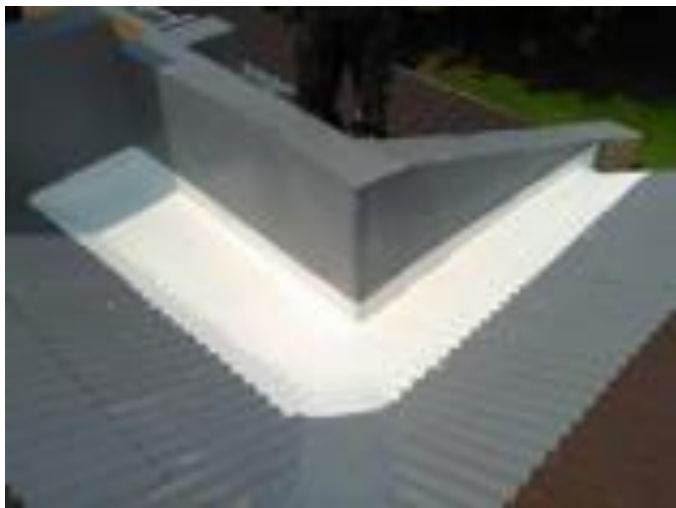


## Seamless Coatings

- Concrete Flat Roof
- Side & Parapet Walls
- Tile Roof Ridge & Valleys
- Flat Roof Surfaces
- Weathered walls



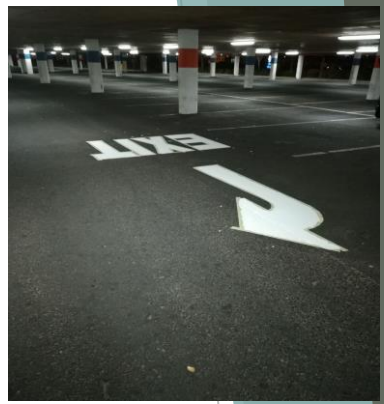




## Lining / Sealant

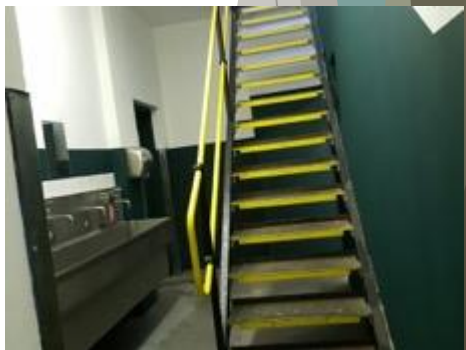
- Box Gutters
- Concrete Gulley
- Pipeline Ext / Int
- Gutter overlap





## Floor and Demarcation

- Demarcation Walk paths
- Demarcation Lines
- Park Bay Demarcations
- Floor Coatings
- Non-Slip Coatings
- Cold Storage Coatings





# BARCO Solutions (Pty) Ltd

## Environmental Policy

We shall:

Establish an environmental management system covering all aspects of its business.

**Promote open communication on environmental issues by:**

consulting with communities and other concerned parties about environmental programmes;

publish an annual Environmental Report

**Protect the environment by:**

conserving energy;

reducing emissions, effluents and waste relative to the electricity generated;

promoting the sustainable use of renewable resources;

utilising finite resources efficiently;

promoting the use of environmentally acceptable materials, products and services;

researching into ways to reduce environmental degradation;

measuring and managing the environmental impact of our activities.

**Foster continual improvement by:**

establishing demanding environmental targets;

developing responsible in-house standards where no regulations exist;

contributing to the development of public policy on the environment.

Train and motivate all employees to regard environmental considerations as an integral and vital element of their day-to-day activities.

Conduct environmental audits at regular intervals.

By Management

( BARCO Solutions (Pty) Ltd )



Proud Service Providers to

**Pick n Pay**

**EXCELLERATE**

**JHI**

**broll**  
PROPERTY GROUP

**ATTACQ**  
INVEST • DEVELOP • GROW

LEVEL 2  
BBBEE  
COMPANY



On behalf of our entire company BARCO Solutions (Pty) Ltd, we would like to say a big thank you for finding the time to read through our comprehensive portfolio, and naturally there is a huge amount of information on each division we have not included, to try keep our portfolio as short as possible, but for any information you may require, Do not hesitate to contact us so we can attend to your valued enquiry.



Level 1 BBEE Company

Web : [www.barcosolutions.co.za](http://www.barcosolutions.co.za)

Email : [info@barcosolutions.co.za](mailto:info@barcosolutions.co.za)

Tel : +27 68 575 0198

Chat to us  
direct on



WhatsApp  
Business



Proud Service Providers to

**Pick n Pay**

**EXCELLERATE** | **JHI**

**broll**  
PROPERTY GROUP

**ATTACQ**  
INVEST • DEVELOP • GROW

LEVEL 1  
BBEE  
COMPANY