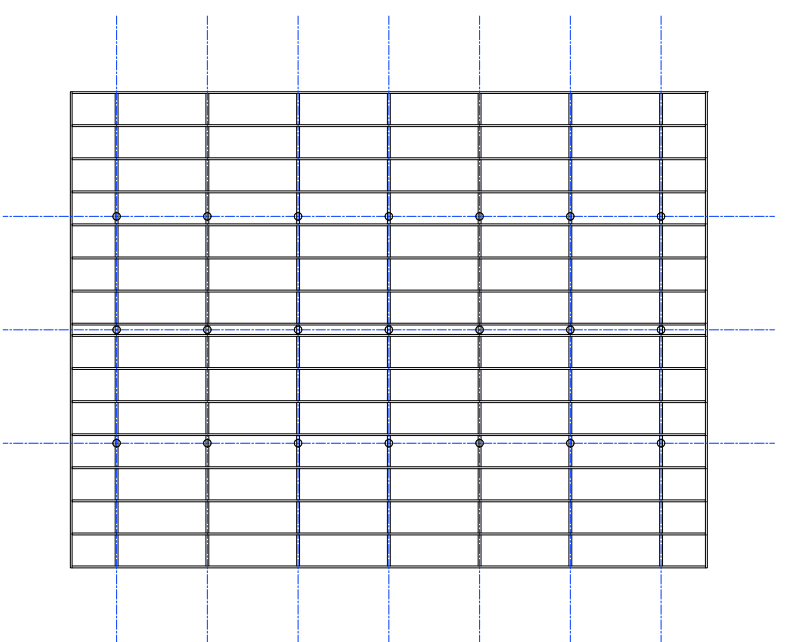
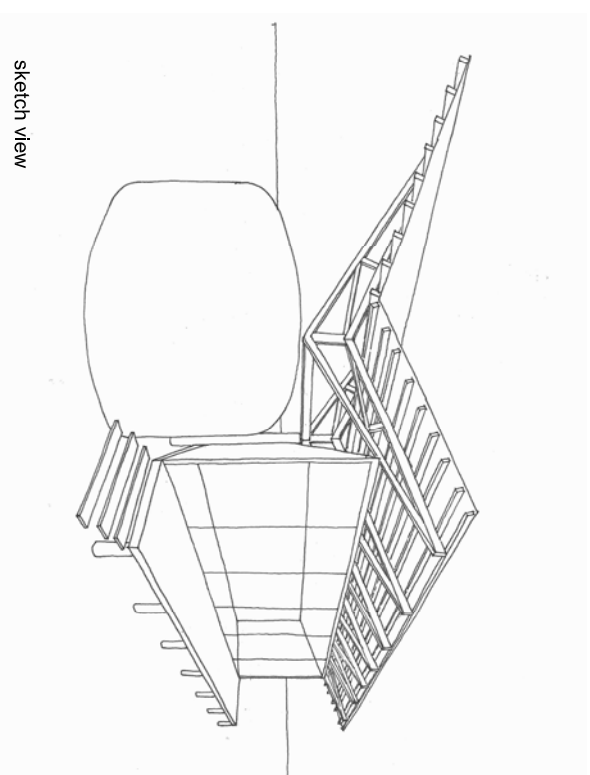


roof plan



roof construction plan



sketch view

metallic roof cladding
prefinished (factory painted)
or galvanized

roof joists
timber or steel

roof trusses
locally made from available material
timber or steel or bamboo

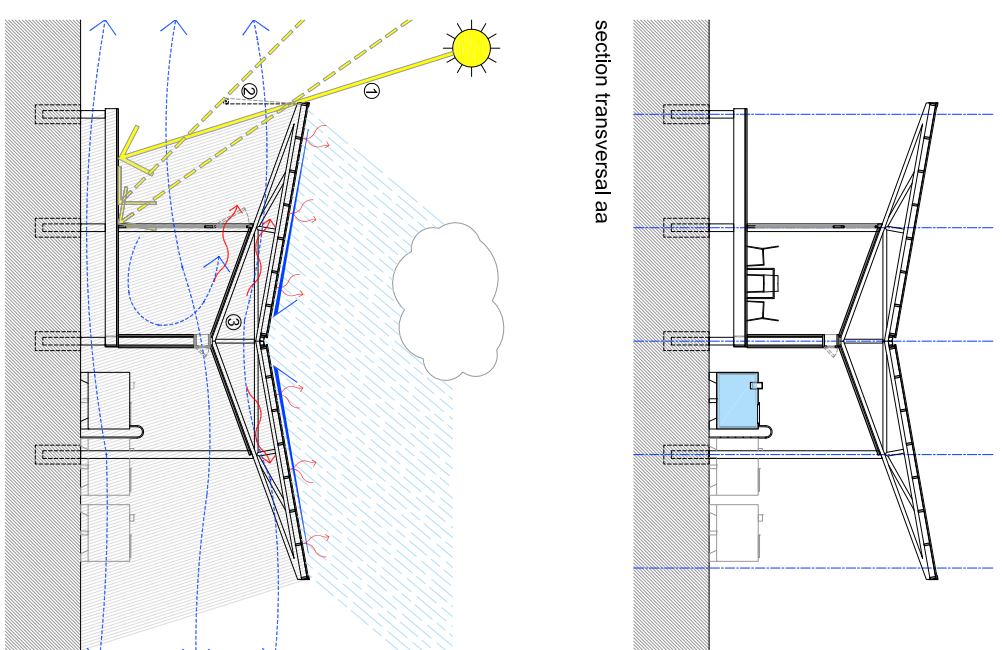
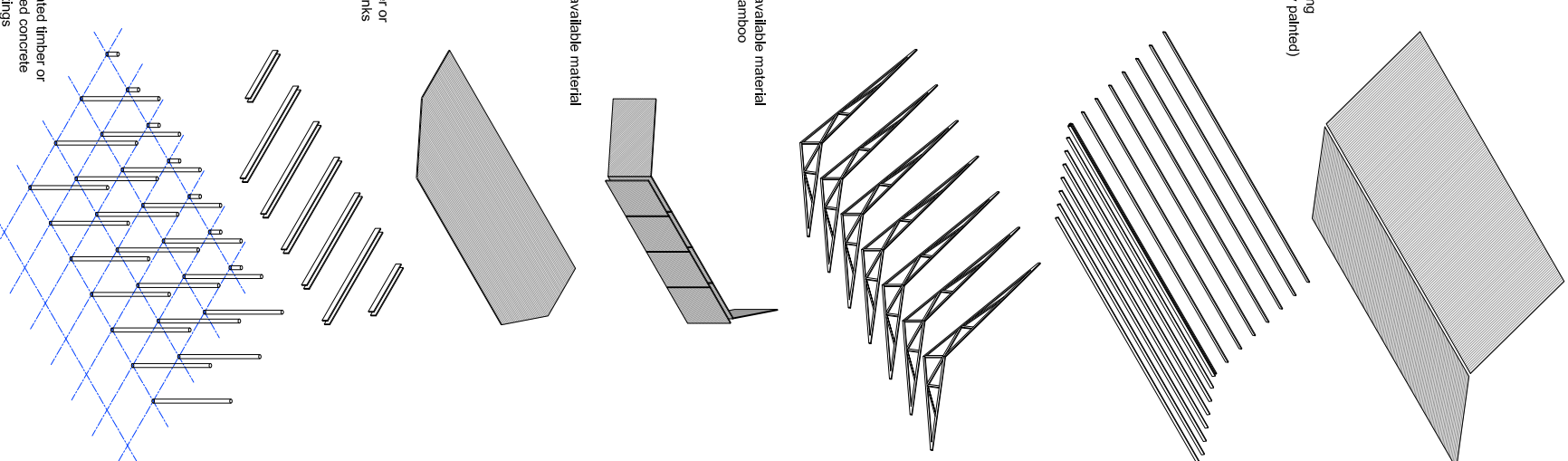
wall panels
locally made from available material

raised floor
sawn treated timber or
recycled timber planks

floor joists
timber or steel

cantilevered pillars
trunks or sawn treated timber or
steel or prefabricated concrete
set in concrete footings

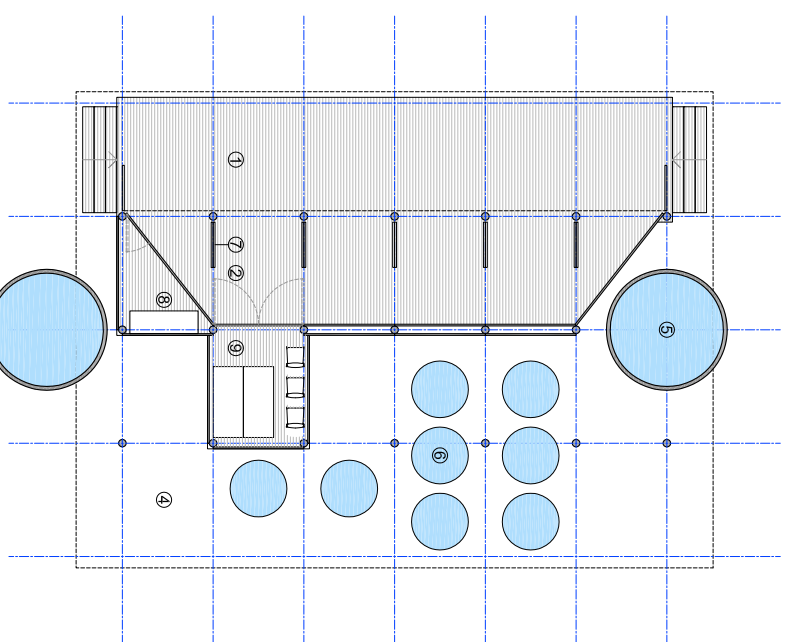
exploded view of constructive elements



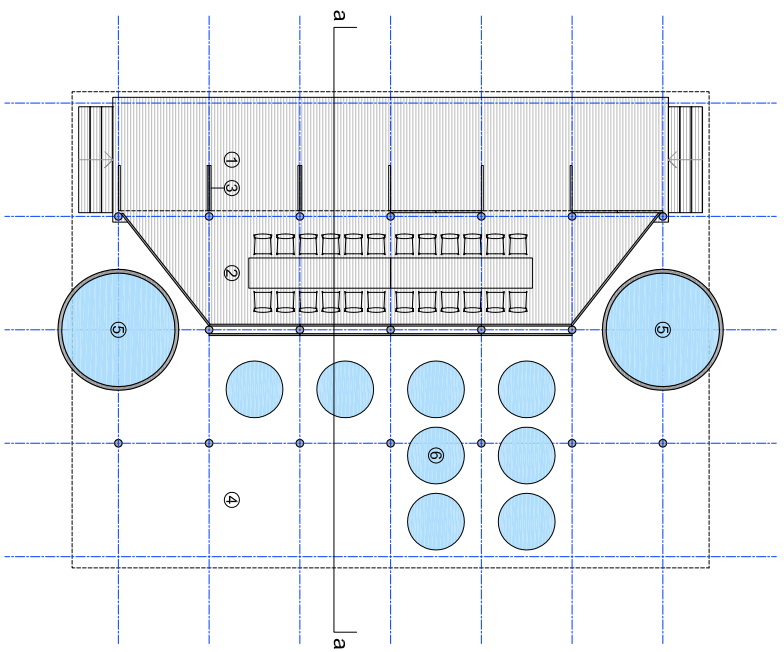
section transversal aa

environmental interaction
KEY ENVIRONMENTAL PERFORMANCE

- 1 maximum incident sun angle
- 2 roll-blinds to increase shade
- 3 air cavity to keep interior cool
- disipated heat
- reflected heat
- incidence solar
- rainfall collection
- shaded work areas
- crossflow ventilation



alternative ground floor plan



ground floor plan

- PLAN KEY
- 1 deck
 - 2 meeting room
 - 3 doors
 - 4 water treatment
 - 5 rainwater tanks
 - 6 pure water tanks
 - 7 doors for stage use
 - 8 medical room
 - 9 storeroom