

1983 Porsche 911 SC Targa – Full Breakdown (VIN: WP0EA0916DS161283)

Mileage: 223K+ (yeah... she's been around the block and then some) but you can tell the motors been rebuilt seem faster than a regular 3.0. Many new parts throughout.

Location: Chattanooga, TN

Color: Mexico Blue (repainted), Original Silver

Title: Clean

Type: Highly-modified, outlaw-style, driver-focused SC Targa

THE HEADLINE TAKEAWAY

This is NOT a collector-grade SC.

This is a **modded outlaw Targa with massive personality, wild upgrades**

Buyers will fall in love instantly; it's the color combo!

EXTERIOR — Mexico Blue, 16" Fuchs, Carrera Whale Tail, Sector Seven madness glass moonroof!

Highlights

- Repainted **Mexico Blue** (iconic, hot color)
- Custom Porsche badge
- **Carrera side scripts**
- **Factory front chin spoiler**
- **Factory Carrera whale tail**
- **Black Targa bar**
- **16" Fuchs (8" front / 9" rear)**
- Fresh Kumho's **tires**, <100 miles

- **Renlinne carbon and lighting upgrades**
 - **One-of-one moonroof “airplane-glass carbon-fiber frame” Targa top**
 - This is insanely rare — borderline art piece
 - Body modded: fenders rolled and drilled custom door handles (by Vaughn’s Euro Classics — good shop)
 - Not original configuration (purists will cry)
-



INTERIOR — Black + Outlaw Upgrades

✓ Highlights

- Power windows
 - Heat works great
 - Sparco steering wheel w/ yellow top marker
 - **Houndstooth seats** (perfect outlaw vibe)
 - **Renlinne carbon fiber door panels, black floorboards and Renlinne front strut bar.**
 - **Custom yellow seatbelts**
 - Pioneer stereo (CD)
 - Autopower roll bar painted **John Deere Yellow**
 - Wevo shifter + custom Italian wooden knob
 - Clean driver-grade presentation
 - A/C inoperable (compressor removed)
 - pure driver car
-



MECHANICAL — Rebuilt Engine, Lowered, Exhaust, Mods

✓ Highlights

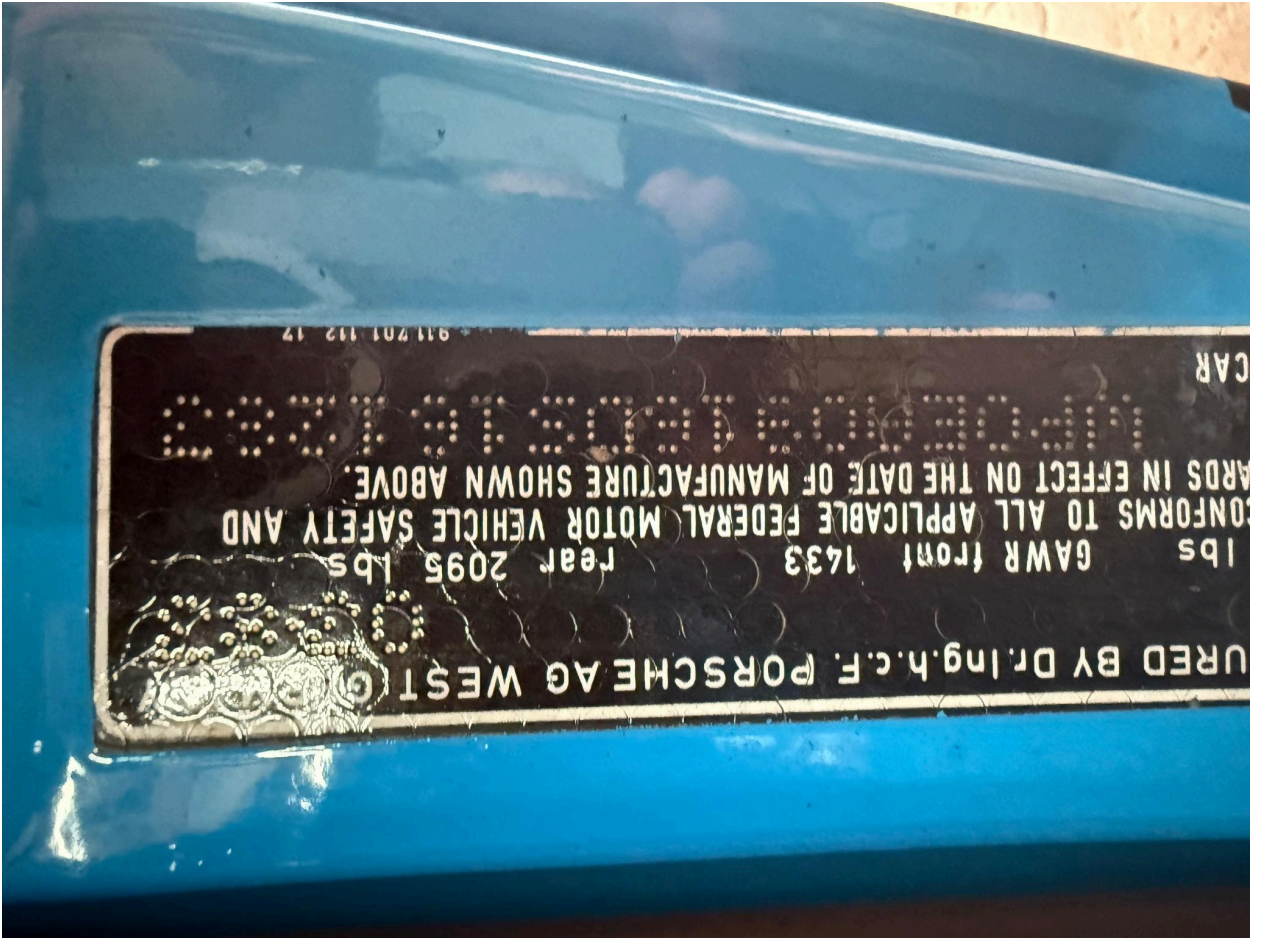
- 3.0L air-cooled flat-six
- **Rebuilt engine** reported
 - *No documentation*, just seller statement
 - Photos show **dry engine**
- Stainless steel exhaust
- MSD ignition box
- Fabspeed airbox

- Larger sway bars
- Lowered suspension
- Oil cooler lines replaced
- 5-speed 915 gearbox









PRODUCED BY DR. ING. H. C. F. PORSCHE AG WESTG.

lbs	GAWR front	1433
lbs	GAWR rear	2095

CONFORMS TO ALL APPLICABLE FEDERAL MOTOR VEHICLE SAFETY AND STANDARDS IN EFFECT ON THE DATE OF MANUFACTURE SHOWN ABOVE.

911 701 112 17

















