

The ***RESTORE ISLAND RAIL*** ***Guide***

**Answers to questions commonly asked
about the corridor and why now is the time
to restore Vancouver Island's railway**

First Nations



A Vision for the Corridor – A Way to Prosperity

If it weren't for the vision and commitment of the Island's First Nations peoples there would be no future for our Corridor. The Island Corridor Foundation is a partnership between local Governments and First Nations along the island rail corridor.

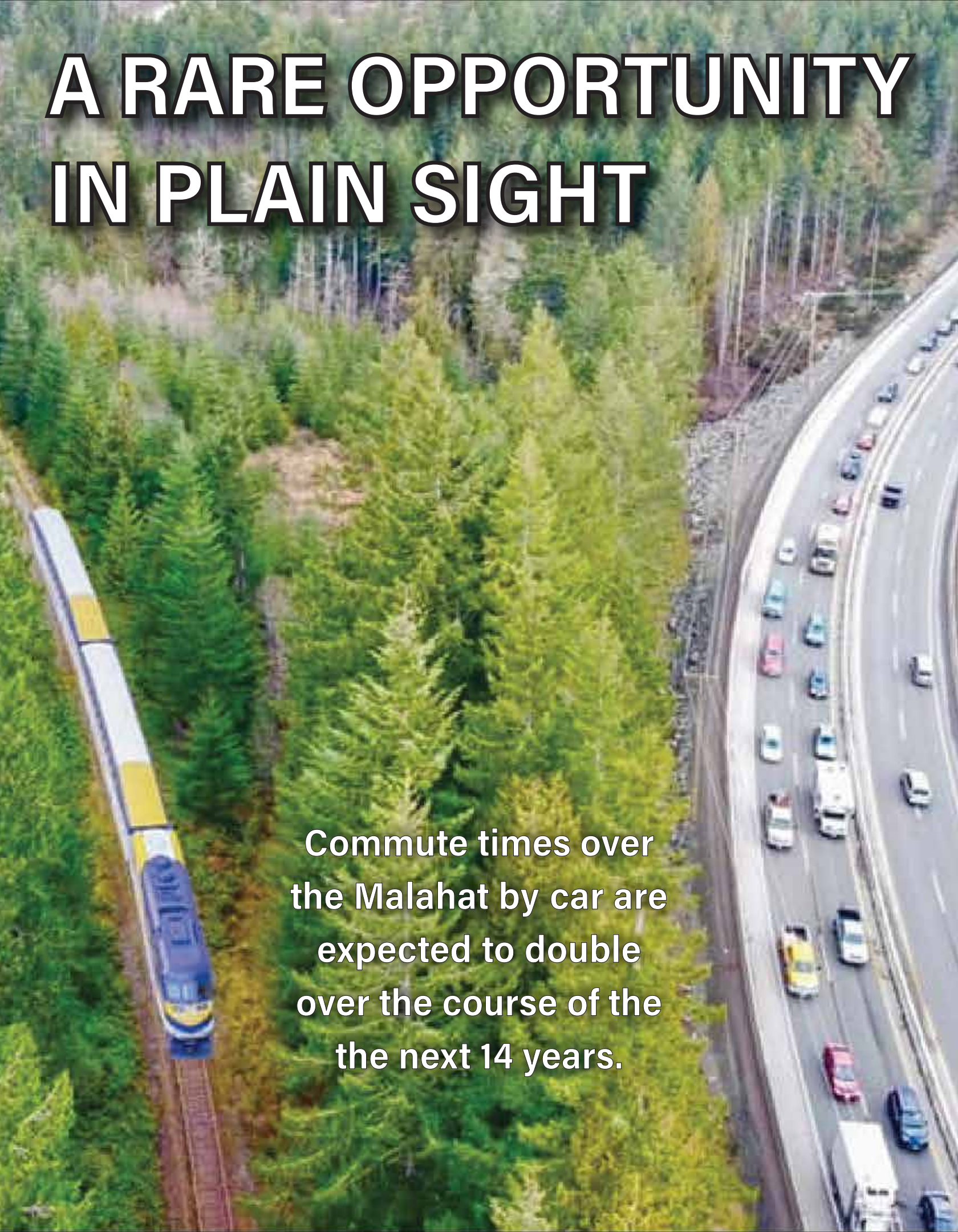


THE ISLAND RAIL CORRIDOR NETWORK



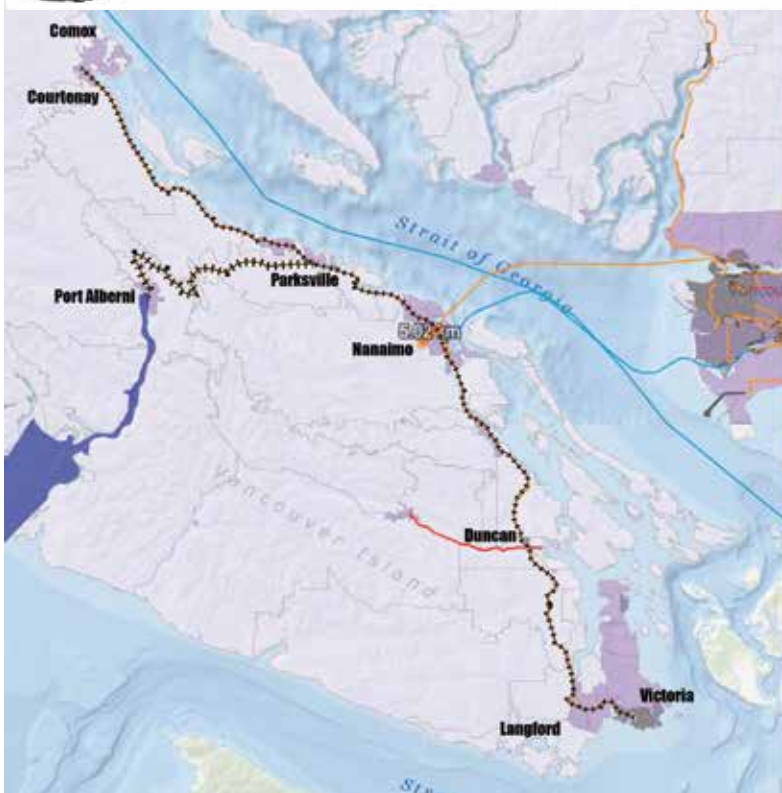
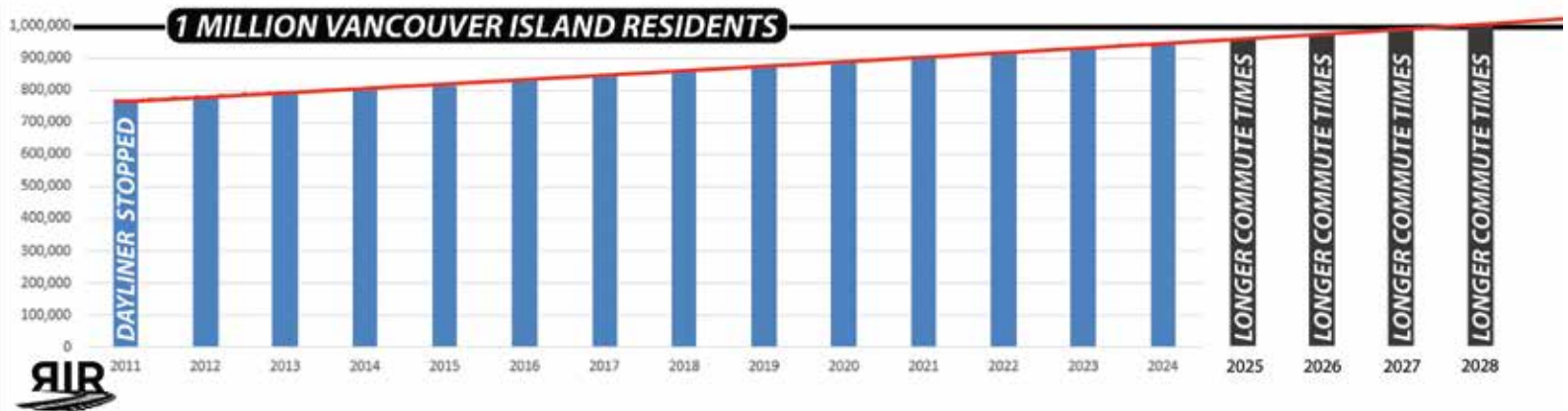
A RARE OPPORTUNITY IN PLAIN SIGHT

Commuter times over
the Malahat by car are
expected to double
over the course of the
the next 14 years.



A catchment of over 800,000 people

BC STATISTICS SHOWS THAT WE WILL REACH 1 MILLION RESIDENTS BY 2028



Modern options for a growing population



***Inter-City
Bi-Level Trains***

Regional Trains

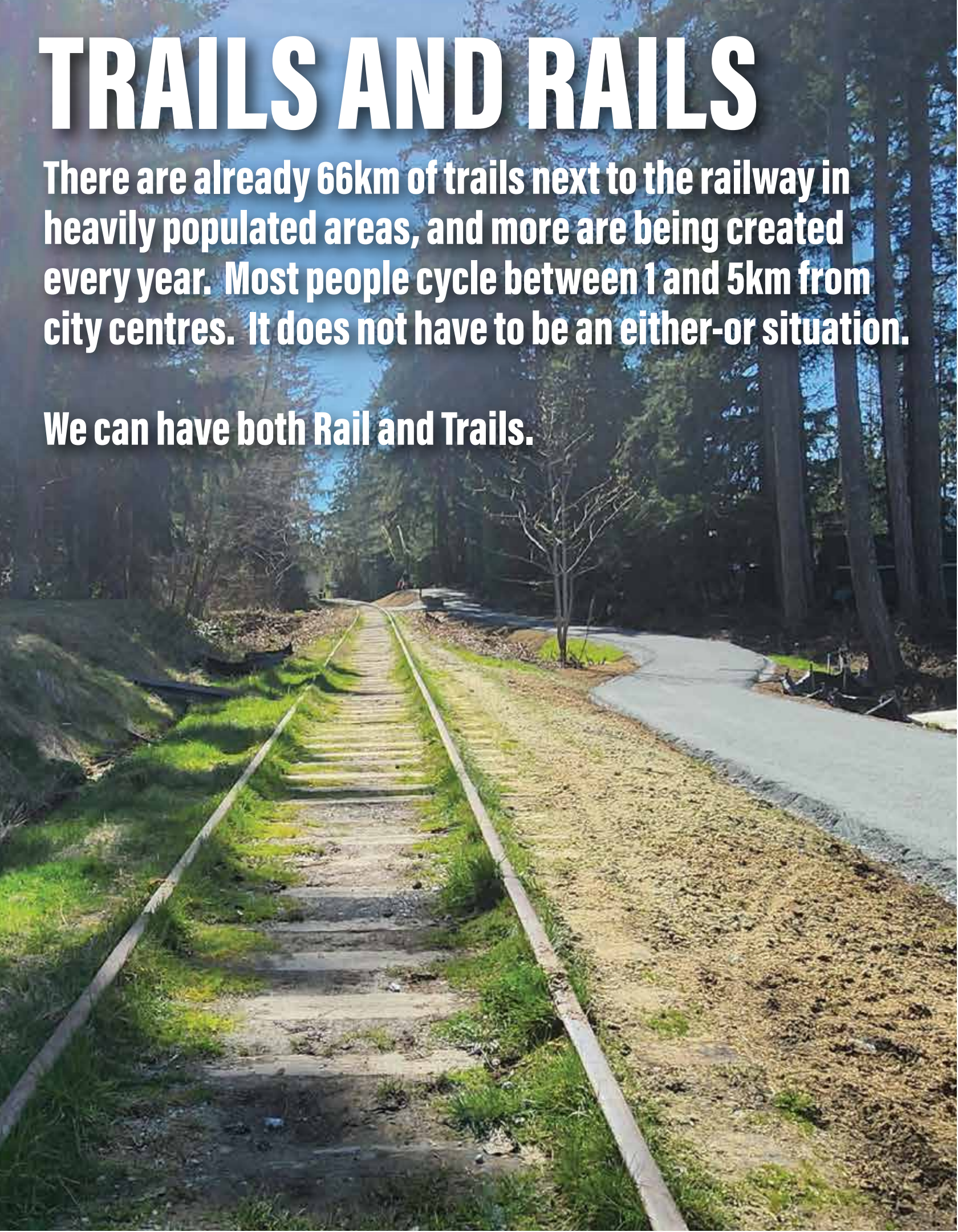


Light Rail Transit

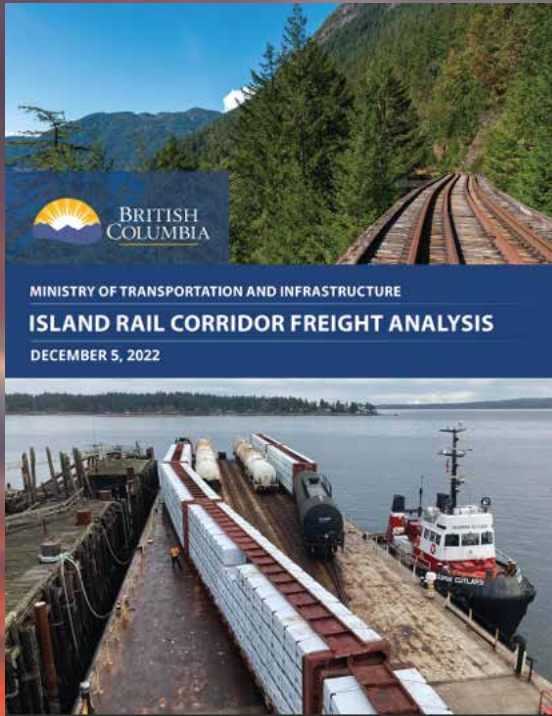
TRAILS AND RAILS

There are already 66km of trails next to the railway in heavily populated areas, and more are being created every year. Most people cycle between 1 and 5km from city centres. It does not have to be an either-or situation.

We can have both Rail and Trails.



FREIGHT



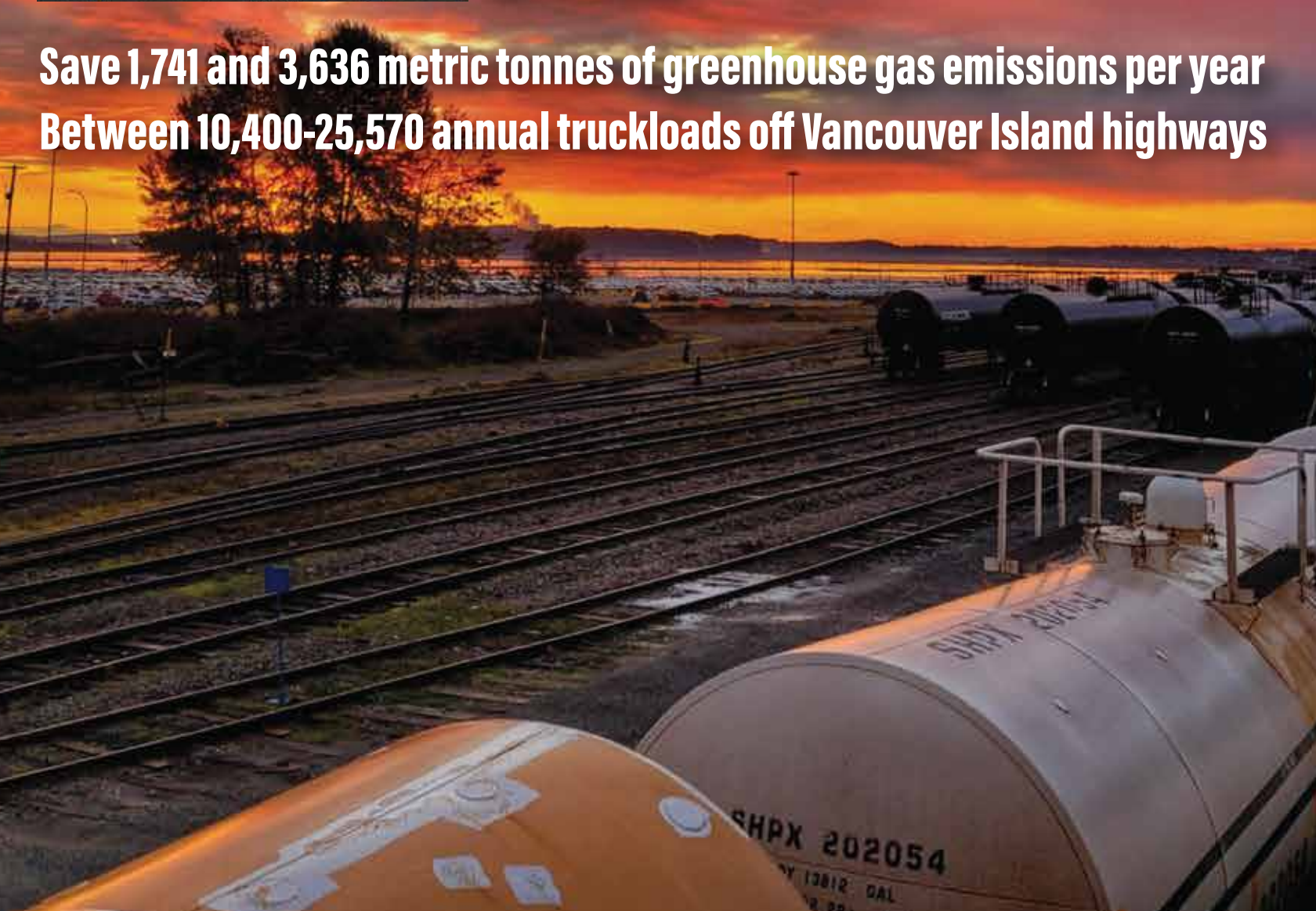
There are many opportunities for freight rail traffic on Vancouver Island that could be realized with significantly less investment than previous studies have identified.

These opportunities would shift many truck trips to rail, both on Vancouver Island and in the Lower Mainland, providing a range of benefits.

Developing a rail connection to Duke Point would provide synergetic benefits for the area and the Island Rail Corridor.

Stakeholders agreed that maintaining the Island Rail Corridor is important to the overall resiliency of the Island, given its limited highway network.

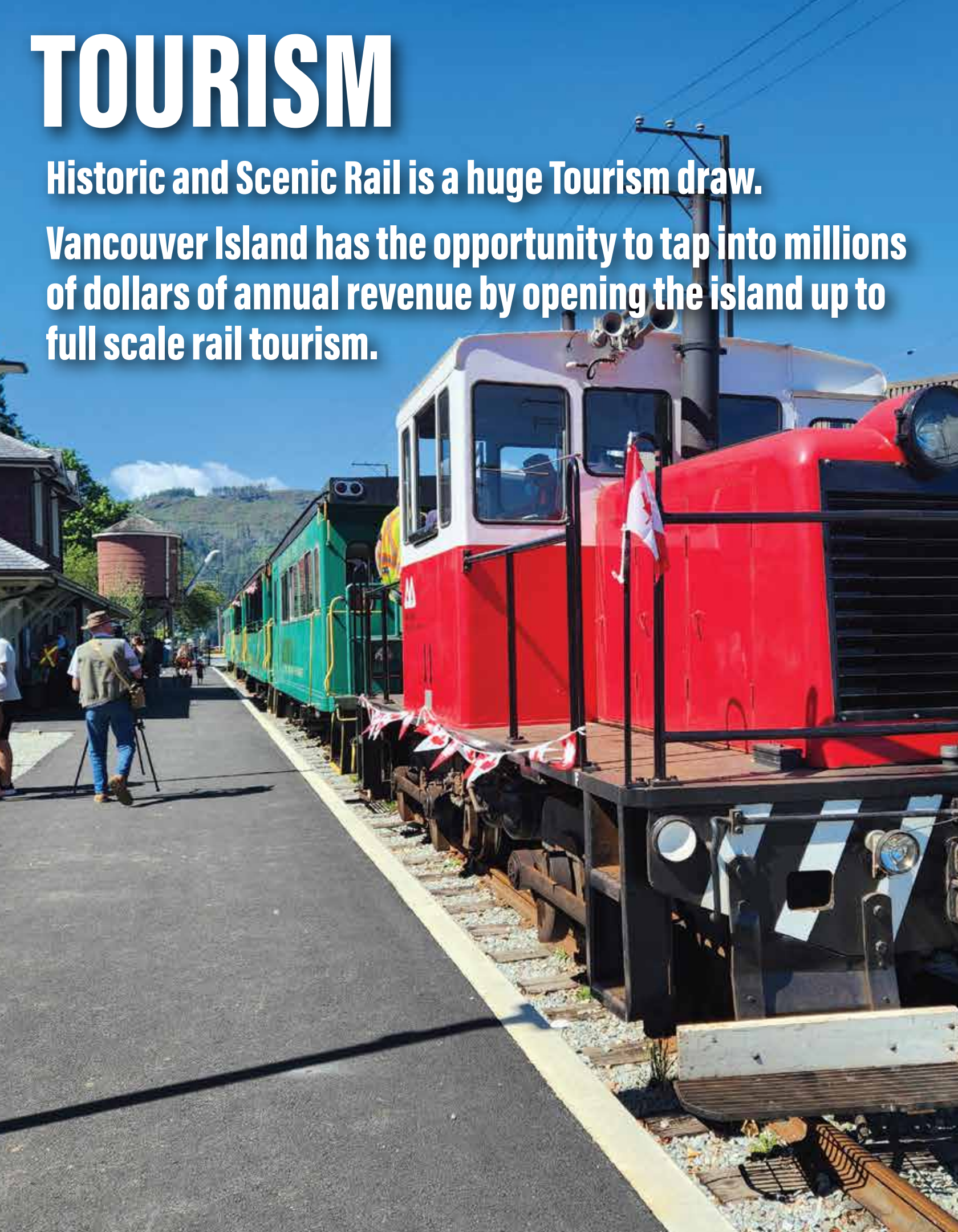
Save 1,741 and 3,636 metric tonnes of greenhouse gas emissions per year
Between 10,400-25,570 annual truckloads off Vancouver Island highways



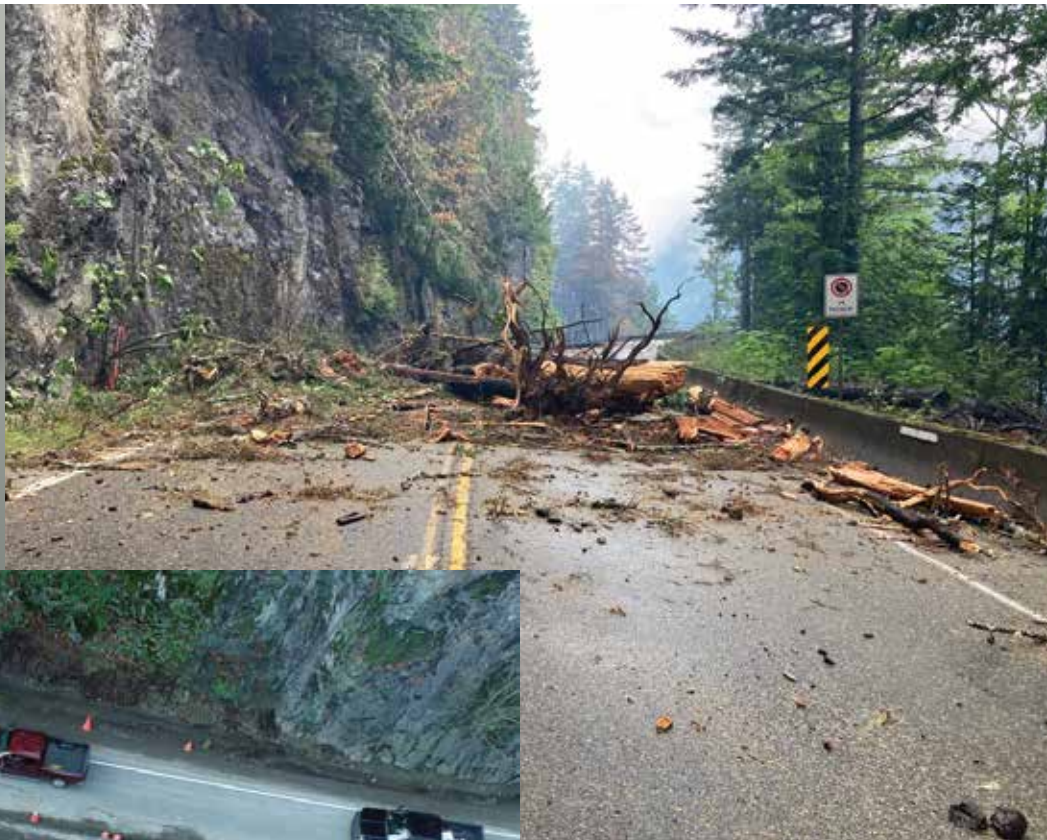
TOURISM

Historic and Scenic Rail is a huge Tourism draw.

Vancouver Island has the opportunity to tap into millions of dollars of annual revenue by opening the island up to full scale rail tourism.



SECONDARY ROUTES ARE CRITICAL

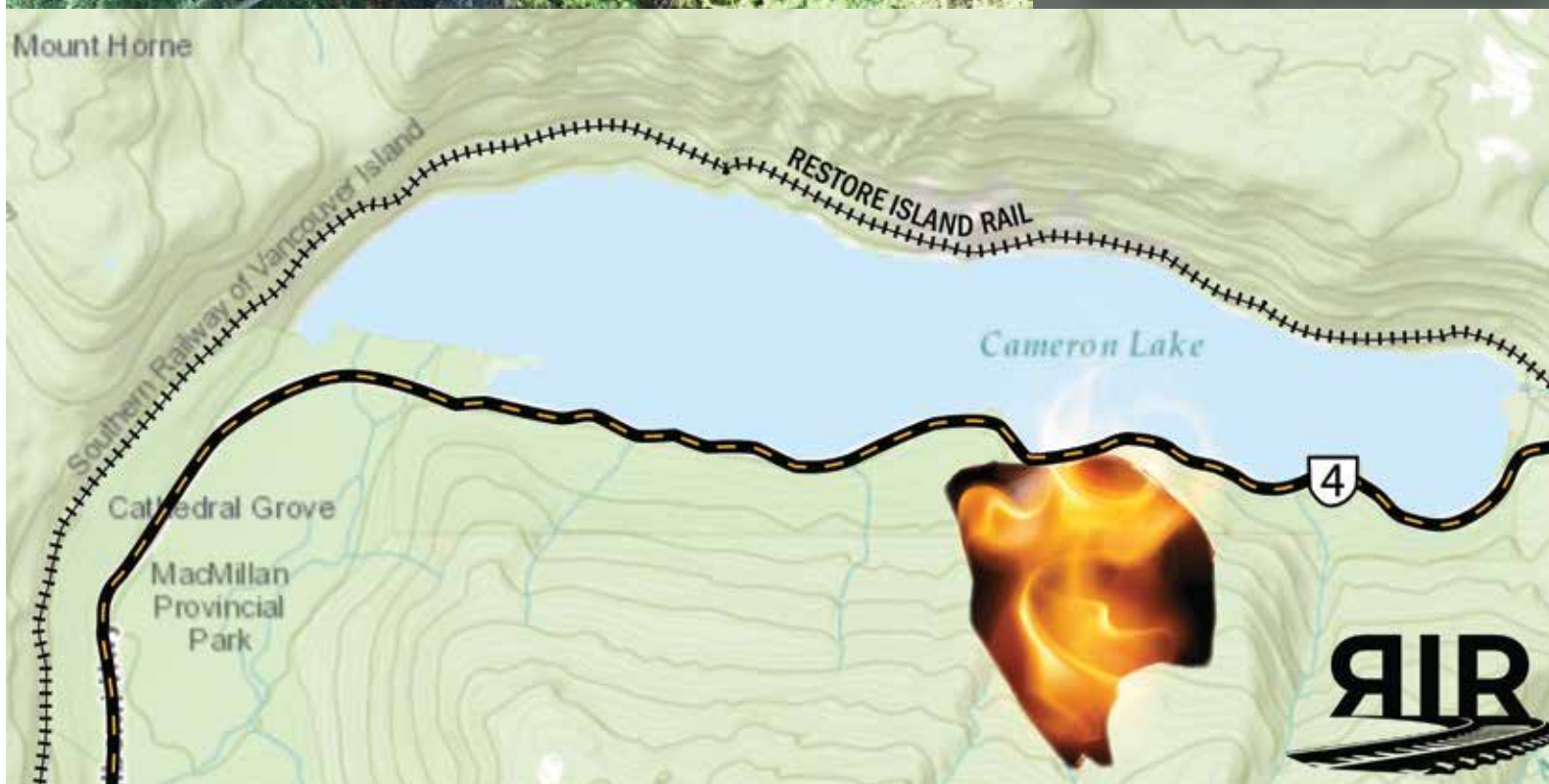


CAMERON LAKE

FIRE, ROCKFALL AND TREEFALL

MALAHAT

ATMOSPHERIC RIVER WASHOUT



CONNECTIONS

Railway stations become hubs or interchanges for other ways of moving like Biking, Walking, Busing, Ride-Shares, and cars via Park and Rides.



A reorganized bus service timed with arrival and departure times of the trains would be transformative for Vancouver Island. Regional Buses would save the long drive between cities to serve their region better.

The Nanaimo Airport is the only international airport servicable by rail on Vancouver Island. Having an airport reachable by rail would be great!



Hullo Ferries, operating out of the Port of Nanaimo could be served by rail providing a come by ferry explore by rail experience on Vancouver Island for visitors, and an easier Vancouver connection for islanders.

Trains carry an order of magnitude more bikes than a bus is able to, creating confidence for riders that they will have space for their bike onboard.



SOCIAL EQUITY



Access to reliable transportation is the most important factor in people escaping poverty, or keeping them from falling into poverty. If a person can't get to work, if they can't get to appointments to heal their mind, body, or soul, they can't escape the poverty track. A reliable network of transit including Trains, Buses, ride shares and micro-mobility will ensure everyone can get where they need to go. Let's provide dignified transportation for those that can't drive, shouldn't drive, don't want to drive, or can't afford to drive, an estimated 20-40% of the population.

ACCESSIBILITY & INDEPENDENCE



Rail transportation offers a more spacious travel experience for those with mobility challenges. Trains would have level boarding platforms, accessible bathrooms, and spaces for wheel chairs and other micro-mobility devices.