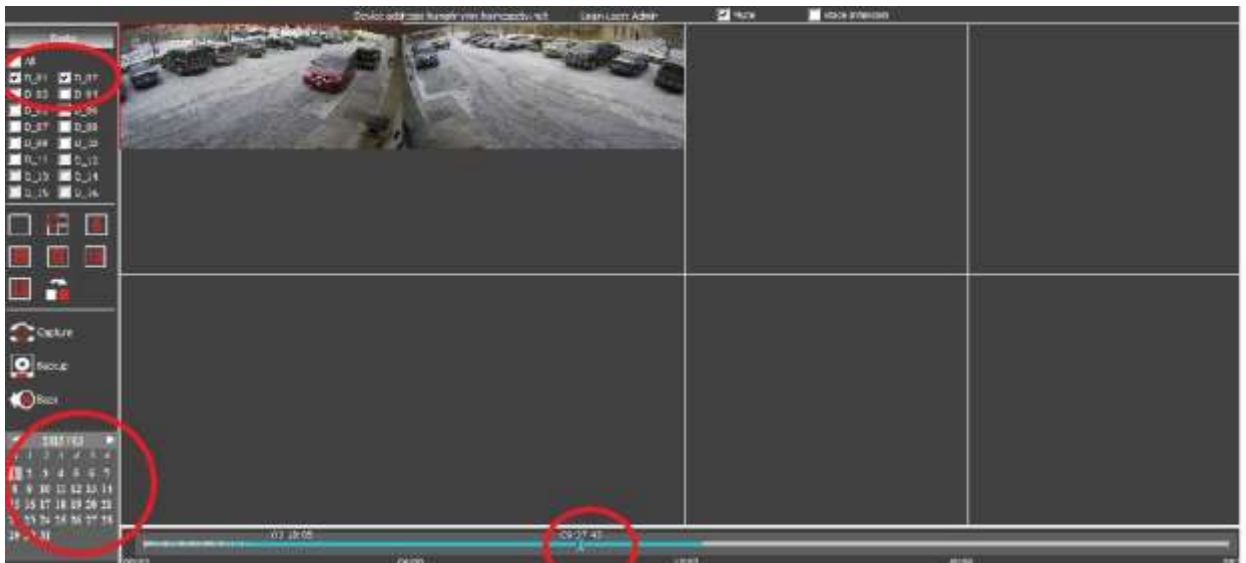


## Video Playback and Backup

- 1- Login to your NVR using internet explorer
- 2- Click the playback button on the left side of the screen

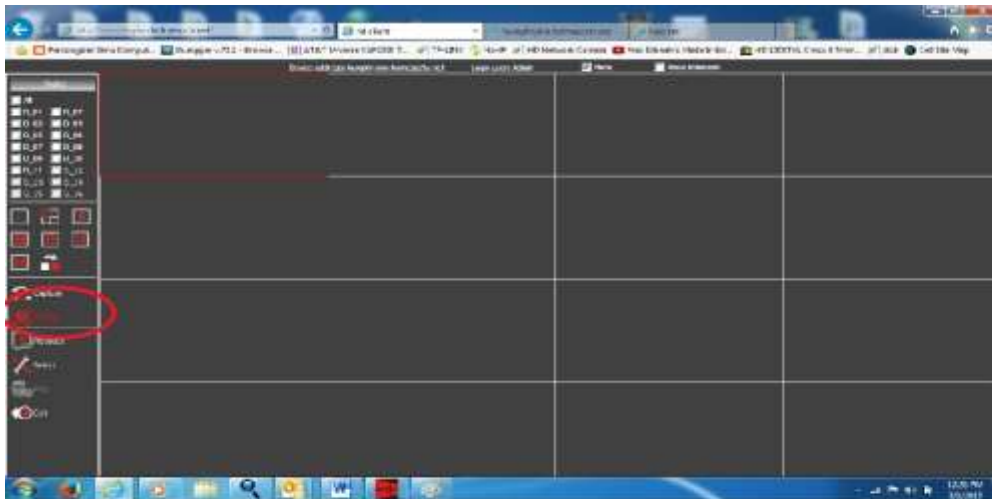


- 3- Check the box beside the desired channel one of two channels at a time depending on the available internet speed we recommend a maximum of two channels at a time

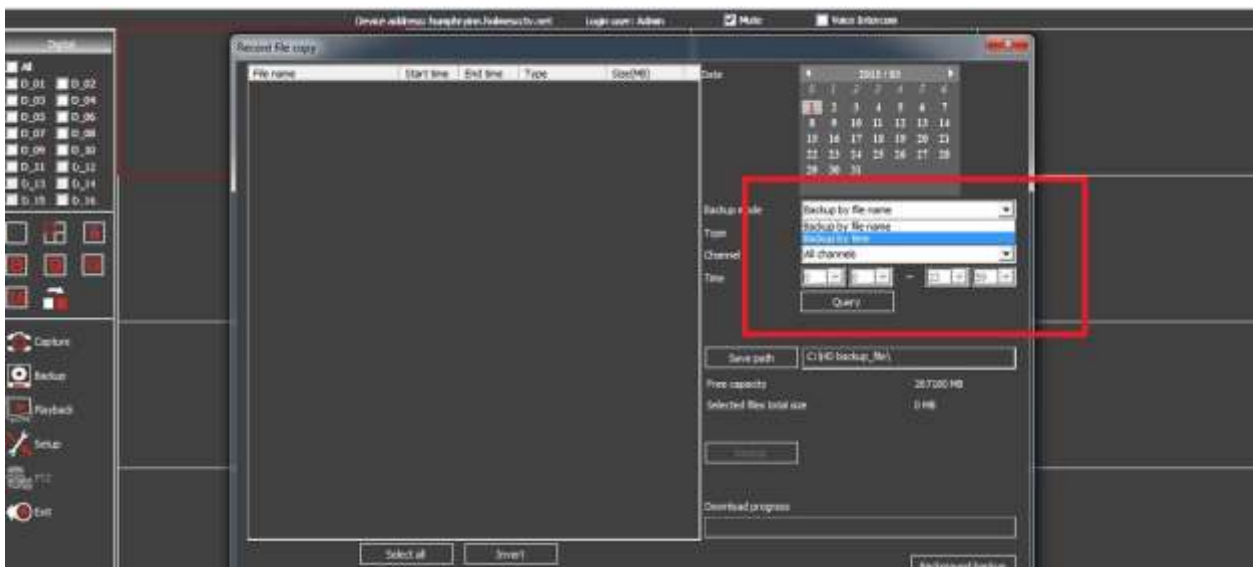


- 4- The date can be selected in the calendar in the lower right corner and the time of day can be selected using the slide bar at the bottom of the screen. Still pictures can be taken from the video by clicking the capture button on the left side the pictures will be saved in the folder C: / HD backup\_file

- 5- Once you have narrowed down the video you would like to download click the backup button on the left side of the screen

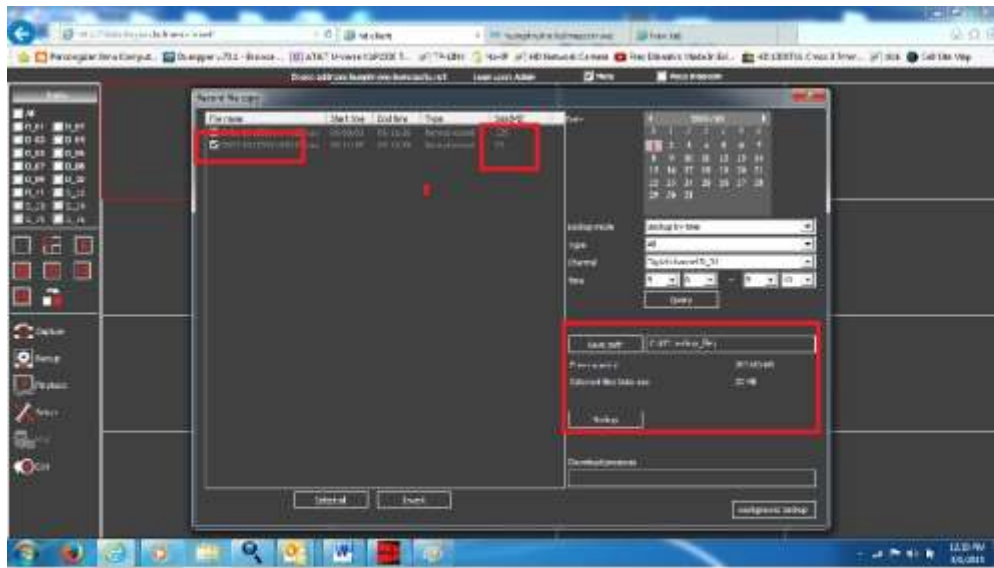


- 6- You will need to select the backup criteria please change backup type to backup by time and select the correct date in the calendar as well as channel number and the desired time.



- 7- Click the query button and a list will be populated if the time span you select is larger than 30 minutes the video will take a very long time to download. If you select a short time span 1- 10 minutes videos will download much faster an 1 minute video can download as fast as 1-2 minutes and 10 minuet video can take up to 30 minutes to download

- 8- Once the list populates select the video to be downloaded by check the box beside the list note on the description includes the channel number start and end time as well as the video size



- 9- Click the download button the status bar will show the download progress and the video will be saved to the C: / HD backup\_file