

CMS SETUP

- 1- Install the CMS software located in the NVR package folder from HOLMES CCTV just double click the file called CMSVision_PureVer_Black and follow the windows installer when complete click finish.
- 2- Open your new CMS software by double clicking the icon.



A login window will open the default username is system and no password is required click the login button



- 3- You will now need to add your NVR to the CMS software click on add/remove device in the top left corner



- 4- A window will open and you will need to click the search button in the top right corner it looks like a magnifying glass



- 5- You will now need to enter the login information for your NVR enter the description name (my NVR) or any name you prefer and the web address use either your WAN IP address or your domain from Holmes CCTV (MYNVR.holmesccctv.net) this information in the file call NVR package in titled network information



- 6- A Specific port is used to login to your NVR and by default is 6001 although this could be different on your NVR if you have more than one so please confirm the port used on the network information sheet
- 7- Enter the username and password provided to by Holmes CCTV in the highlighted location and click confirm



- 8- You will now need to click login the window will close



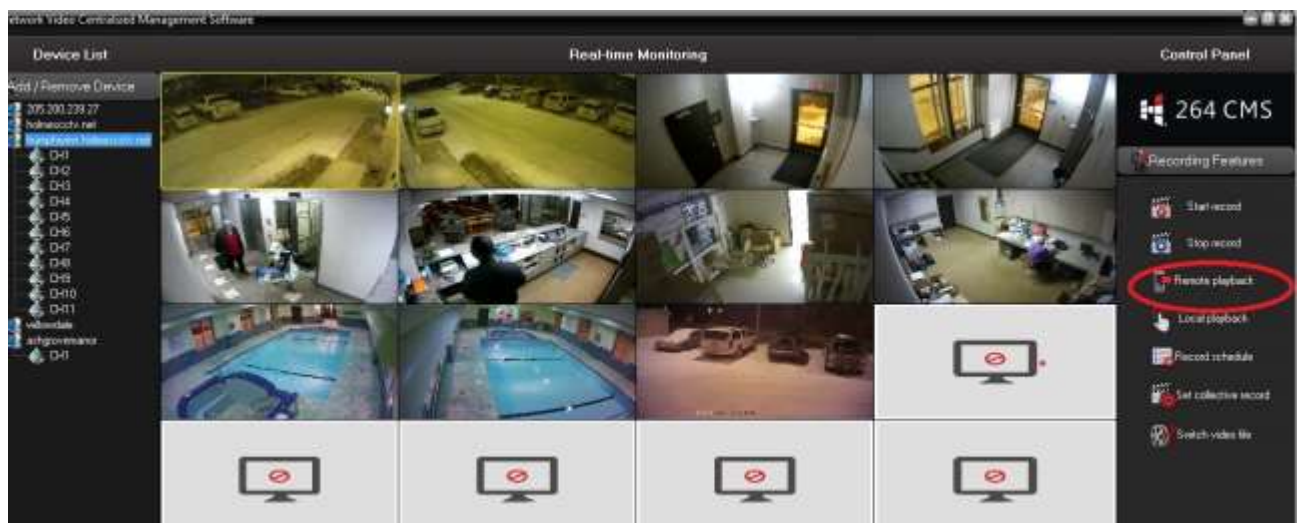
-
- The screenshot displays the Network Video Centralized Management Software interface. The main window shows a 4x4 grid of 16 camera feeds. The top-left feed is highlighted with a red circle, and a context menu is open over it, listing various actions such as 'Add / Remove Device', 'Open Sub-stream', 'Open Main stream', 'Image stretch', 'Auto choice', 'Refresh preview', 'Close preview', 'Start record', 'Stop record', 'Local playback', 'Remote playback', 'Remote config', 'Voice intercom', 'TV wall output', 'Synchronization time', and 'Ping'. The top bar includes 'Device List', 'Real-time Monitoring', and 'Control Panel'. The right sidebar shows 'System Status' with '264 CMS' and various configuration icons. The bottom bar shows a list of devices and a table with columns: Type, Time, Device, User, and Description.

-
- Network Video Centralized Management Software
- Device List
- Real-time Monitoring
- Control Panel
- 264 CMS
- System Status
- Local info
 - Remote config
 - Device management
 - E-mail
 - Alarm status setup
 - Alarm output device
 - Check item records
- Log
- | Type | Time | Device | Description |
|--------------------|---------------------|--------------------------------------|---|
| Video Motion Alarm | 2015-02-06 19:45:44 | Have 106.206.209.27 camera channel 1 | Have 106.206.209.27 camera channel 1 camera channel 1 |
| Video Motion Alarm | 2015-02-06 19:45:42 | Have 106.206.209.27 camera channel 1 | Have 106.206.209.27 camera channel 1 camera channel 1 |
| Video Motion Alarm | 2015-02-06 19:45:41 | Have 106.206.209.27 camera channel 1 | Have 106.206.209.27 camera channel 1 camera channel 1 |

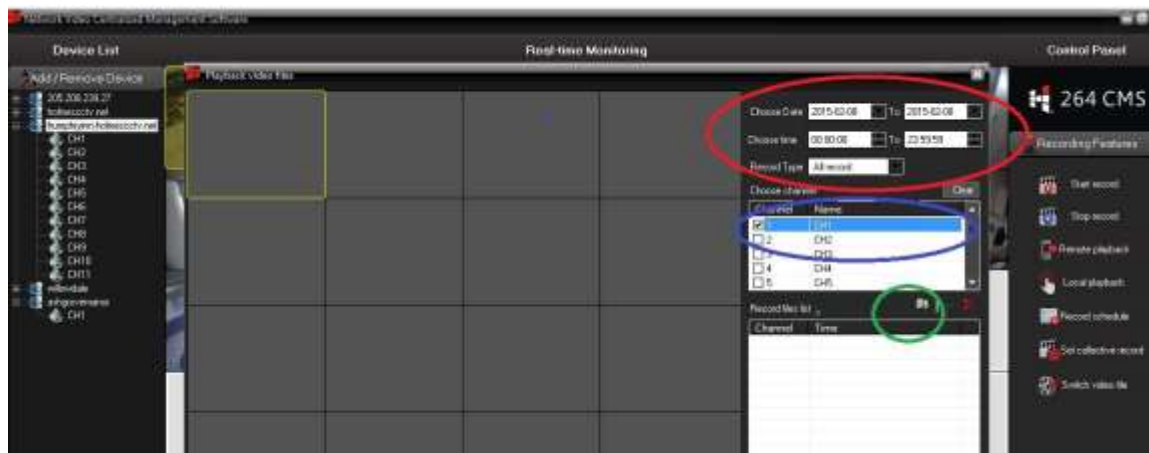
- 11- To playback and download videos from your NVR select the recording features tab on the bottom left side of the CMS main page click your NVR once on the left side to highlight it blue



- 12- Double click the remote playback tab in the right side menu as shown below and wait for the playback window to open this could take several seconds depending on the internet speed of the NVR



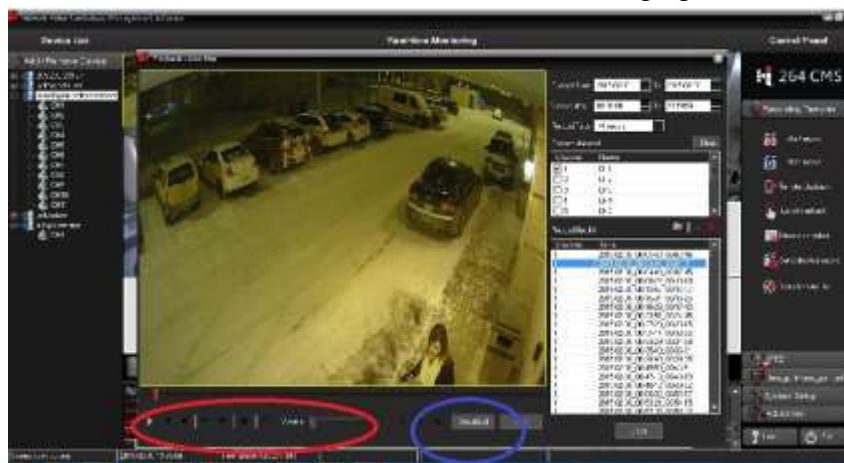
- 13- You will need to enter the search criteria of the desired video such as time, date and channel number once the correct information is displayed in all windows click the magnifying glass below the channel list to start video search



- 14- The video list will populate with any video the meet the search criteria the videos are titled by time and date double click any title to start playing



- 15- The easy to use playback controls are located the bottom of video window highlighted in red if you would like to download the video click the download button highlighted in blue



- 16- You will be asked to select a download location like your desktop and name the video be sure that the file type is set to AVI because this will guarantee the video can be play on any computer



For full instruction please refer to CMS user manual