

DVR LOGIN

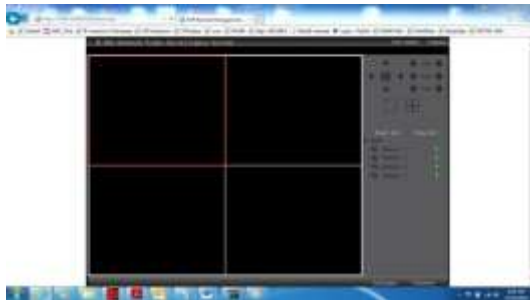


Enter your IP address in the address bar it should look like this [HTTP://111.111.111.111:82](http://111.111.111.111:82)

Replace the 1's with your actual IP address and push the enter button on your keyboard.

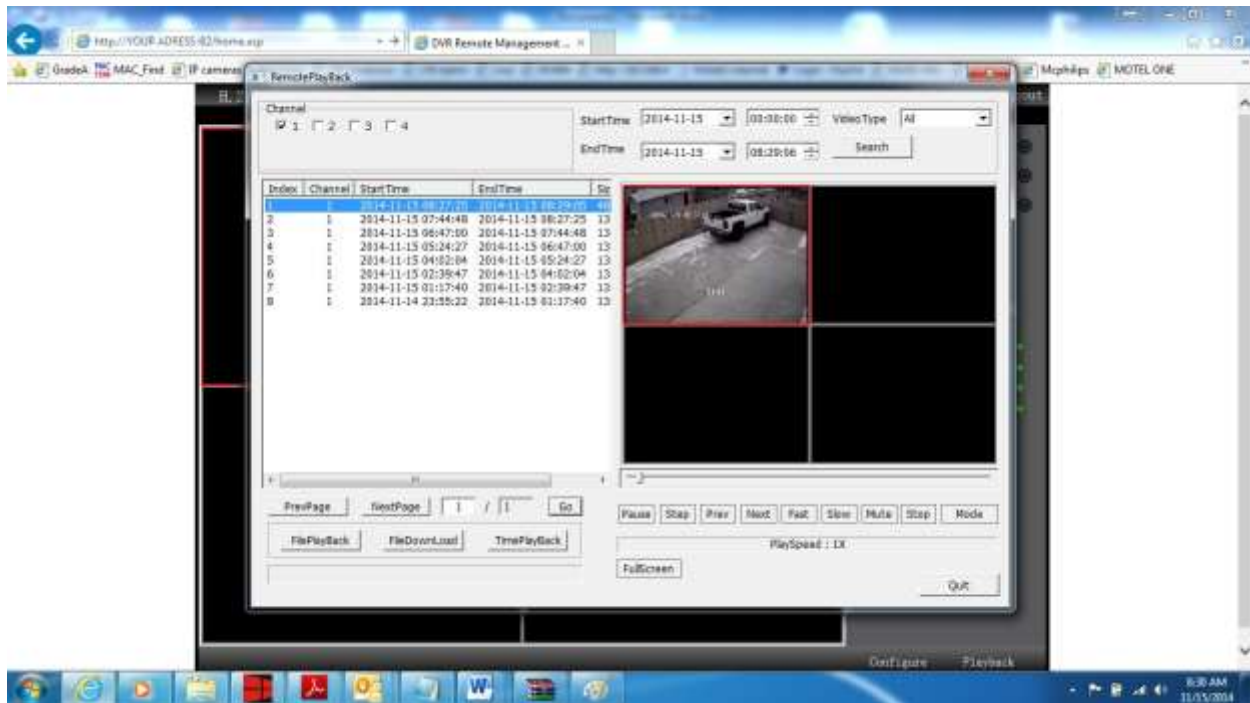
A page should appear that looks like the one above if this is the first time you are opening your DVR please refer to the ActiveX setup instructions.

Enter your username and password and click the arrow or enter key the following page will open.



To view all your cameras click the start all button on right side of page to view just one or two click on the camera you want to watch to stop viewing cameras click stop all or close the webpage.

To play back videos click the playback button at the bottom of the pagekeeping



Check the channel you would like to play and the date and time then click the search button a list will appear double click the video in the list and it will start playing you can use the speed options at the bottom to view the video faster or slower.

To download the video simply click on the video title in the list and click the file download button at the bottom.

You will be prompted to name and save the video I usually just save it to the desktop for easy access and then move it to a file for safe keeping.

Be sure to change the file type to AVI before you save the file this will allow easy playback on any computer.

- 1- Login to your DVR from your computer
- 2- Enter your user name and password
- 3- Scroll down to the bottom of the page and click playback
- 4- Check the box beside desired channel number and click the search button
- 5- Scroll down to desired recording and click the left mouse button to highlight
- 6- To play the video click the File Play Back button below the list
- 7- To download the video click the download button a popup window will appear select the location to save the video (usually the desktop)

8- Name the file and change the file type to AVI click save.



Be sure that protected mode is **not** enabled in internet explorer this setting is found in internet options under the security tab.